

Lookout Working Worksite Protection for Lithgow Bravo Frame Routine Network Maintenance Activities

WORK DESCRIPTION	Routine network maintenance activities
WPP NUMBER	WT4B 10178
SCOPE:	<p>This SWI is applicable for the worksite protection arrangements using lookout working concerning routine network maintenance, defect management and repair of assets within the limits specified below and in the attached plan.</p> <p>Work activities include:</p> <ul style="list-style-type: none"> • Routine preventative and corrective work such as inspections and maintenance as appropriate for the type of protection being applied as part of this plan.
AUTHORISATIONS:	<p>Protection Officer: Protection Officer Level 1 or higher</p> <p>Lookout: Hand signaller Level 1 or higher or Protection Officer Level 1 or higher.</p>
SAFETY CONTROLS: Lookout working arrangements	<p>The nominated worksite location for Lookout Working is for fixed worksites and includes the Up Main West line & Down Main West line between 96.7 Signal to 97.0 Signal</p> <p>The Protection Officer must:</p> <ul style="list-style-type: none"> • Establish Lookouts as required to watch for approaching rail traffic from all entry points • Establish a Lookout for each track work is being performed on to a maximum of two tracks being worked on at the same time • Designate and instruct which safe places the workers are to use as the work is completed along the work route within the worksite limits.
PRESTART REQUIREMENTS:	<p>Protection Officer assessment checklist must be completed before instructions in this SWI are followed.</p> <p>Tools and equipment required:</p> <ul style="list-style-type: none"> • Protection Officer requires a phone to contact the Signaller. • Lookouts require a high-visibility arm sleeve and a whistle / horn / Eco Blast Pro.
FURTHER INFORMATION:	<p><i>NWT 300 Planning work in the Rail Corridor</i></p> <p><i>NWT 310 Lookout Working</i></p> <p><i>NPR 711 Using Lookouts</i></p> <p><i>NPR 751 Calculating Minimum Warning Time</i></p> <p><i>NPR 712 Protecting work from rail traffic on adjacent lines</i></p> <p><i>NGE 200 Walking in the Danger Zone</i></p> <p><i>NLA 218 Lithgow</i></p> <p><i>Lookout Working Prohibited Locations Register</i></p>


UNCONTROLLED COPY WHEN PRINTED



Protection Officer assessment checklist

Protection Officer's name:	Yes (Tick if Yes)
This document has not expired 12 months beyond the issue date.	
SWI details and protection arrangements have been reviewed and validated for the assessed worksite location, including: <ul style="list-style-type: none"> On-site safety assessment has been completed for relevancy of works being undertaken The required protection details, environment and tasks are unchanged from the details of this SWI 	
The Protection Officer and Qualified Workers deploying qualifications are current and have practiced in the last 6 months. If not practiced, then a Rail Safety Coach must be contacted for guidance.	

Corridor Safety Number	Protection Officer Signature	Date



Warning:

If an above item does not apply, the Protection Officer must not use this Safe Work Instruction. A new worksite protection plan must be completed in accordance with NRF 014 Worksite Protection Pre-work briefing and NRF 015 Worksite Protection Plan.

UNCONTROLLED COPY WHEN PRINTED

Worksite Protection Pre-work Briefing

Briefing date: / /

Protection Officer details

name signature contact No.

Work location: **Lithgow Bravo Frame**

Scope of work:

Worksite protection: **Lookout Working** Refer to Worksite Protection Plan for details

Hazards (e.g. environment, plant, equipment, human error)	Controls (to be implemented to eliminate or reduce the risk to the lowest practicable level)	Person responsible for Control
Approaching rail traffic	<ul style="list-style-type: none"> Lookouts must be trained and competent to perform lookout duties. Lookouts must be rotated if performing lookout for extended periods of time. Workers to remain within worksite limits as set out in this procedure. Lookouts must be placed as per protection plan. Workers are to stop work and move to a safe place immediately on being warned by the lookouts. 	Protection Officer and Lookout
Live adjacent lines	Lookouts must provide warning to workers when rail traffic is approaching from the adjacent line in either direction.	Protection Officer and Lookout
No safe place in platform limits	Workers must not enter the Danger Zone within the platform limits of Lithgow Station as per Lookout Working Prohibited Locations Register.	All
Two - way running / multiple entry points into worksite	One Lookout placed watching each direction before work starts. Lookouts are to warn workers of approaching rail traffic, including rail traffic entering or travelling within the worksite. Workers are to stop work and move to a safe place.	Protection Officer and Lookout
Obstruction to Minimum Sighting Distance	Lookouts must provide warning to the workers whenever their line of sight is obstructed by passing rail traffic. Workers must stop work and move to a safe place and reassess positioning and method	Protection Officer and Lookout
Adjoining/Surrounding Worksites	<ul style="list-style-type: none"> Lookouts must have two independent audible warning devices that can be heard by workers over any noise generated by adjoining/surrounding worksites. Lookouts are to provide warning if their line of sight is obstructed by adjoining/surrounding worksites. 	Protection Officer and Lookout
Access to / Egress from worksite	Access and egress points must be agreed prior to entering the danger zone, consideration should be given to ease of access and safest possible entry and exit points.	All
Slips, trips, falls and hazards carrying equipment	Protection Officer will assess and instruct when it is safe for workers to use NGE 200 Walking in the Danger Zone to move to the worksite or safe place.	All
Mobile phone	Mobile phones use is not permitted in the danger zone unless being used by maintenance staff for critical maintenance communications or recording of defects.	All

A final site inspection has been conducted immediately before commencing work, and any new hazards and controls have been included.

UNCONTROLLED COPY WHEN PRINTED



Worksite Protection Plan – Lookout Working

Signaller Details

name	Lithgow Yard Box Panel	02 6354 9574
------	-------------------------------	---------------------

Protection Officer Details

name	signature	contact No.
RSW or RIW No.	designation	Planned duration

Workplace Supervisor details:

Type of work:

Worksite location

on the

between and

Worksite assessment

The Lookout Working Prohibited Locations Register been consulted Yes

Warning method

Horn	Whistle	Voice	Eco Blast Pro
------	---------	-------	---------------

Minimum Warning Time Calculations

Maximum track speed

Number of Lookouts used Position of Lookouts and

Number of additional Lookouts* used Position of Lookouts and

* Add an additional 5 seconds See Time if an additional Lookout is used

Note - Lookouts may relocate to positions within these KMs as workers move to specified locations within the worksite.

2 sec	+	3 sec	+	10 sec	= Minimum Warning Time (MWT)	15 sec	85 km/h	355 metres
2 sec	+	3 sec	+	10 sec		15 sec	75 km/h	313 metres
2 sec	+	5 sec	+	10 sec		17 sec	75 km/h	355 metres
2 sec	+	3 sec	+	10 sec		15 sec	70 km/h	292 metres
7 sec	+	5 sec	+	10 sec		22 sec	70 km/h	428 metres
2 sec	+	3 sec	+	10 sec		15 sec	25 km/h	105 metres
<small>See Time (S)</small>		<small>Move Time (M)</small>		<small>Safe Time</small>	<small>(S+M+10 sec = MWT)</small>	<small>Track speed</small>	<small>Minimum Sighting Distance as calculated</small>	

Note – Additional MWT calculations can be recorded in the Protection Officer’s Diary.

Where are the safe places identified for the Lookouts and the workers?

Lookouts:



UNCONTROLLED COPY WHEN PRINTED



Workers: Up & Down Cess, wide 6 foot

Ensure the workers have been briefed about these work details Yes

Diagrams, notes, and detailed instructions are over the next pages. These are to be read and followed as part of this worksite protection plan for Lookout Working.

INSTRUCTIONS:	<ol style="list-style-type: none"> 1. Workers enter the rail corridor via W00 156.047 U, located on the Up side off Railway Parade. 2. Protection Officer briefs workers about the worksite protection arrangements. 3. Protection Officer contacts Lithgow Yard Box Panel and tells the Signaller about the use of Lookout Working between 96.7 Signal to 97.0 Signal on Up & Down Main West Lines. 4. Establish Lookouts at designated locations. 5. Workers start work up to designated locations. 6. Workers move to safe place. 7. Re-establish Lookouts at next designated location. 8. Repeat steps 5-7 until work is complete. 9. Workers move to a safe place. 10. Recall lookouts. 11. Workers egress the worksite via W00 156.047 U, located on the Up side off Railway Parade. 12. Protection Officer contacts Lithgow Yard Box Panel to end Lookout Working.
ADDITIONAL DETAILS	<p><u>Two-way running / multiple entry points</u> Lithgow Yard is a two-way running area. Rail traffic movements can occur in any direction. A Lookout is placed for approaching rail traffic for each line and must provide warning for any rail traffic approach. Workers must move into a safe place when Lookouts provide a warning regardless of which line the rail traffic is approaching on.</p> <p><u>Obstruction to Lookout's Minimum Sighting Distance</u> Lookout must provide warning to workers when Minimum Sighting Distance is impeded by rail traffic on adjacent lines. All workers must remain in a safe place until Lookout can re-establish Minimum Sighting Distance.</p>
LOOKOUTS	<div style="display: flex; justify-content: space-around;"> <div style="text-align: center;">  <p>Image 1: View of Down direction Lookout at 155.515 KM in the 6 foot.</p> </div> <div style="text-align: center;">  <p>Image 2: View of Up direction Lookout at 156.010 KM in the Down Cess.</p> </div> </div>

UNCONTROLLED COPY WHEN PRINTED

ACCESS / EGRESS



Image 5: Access/egress gate **W00 156.047 U** and Emergency Assembly Point.

INSTRUCTIONS:
 96.6 Signal Maintenance

1. Protection Officer briefs workers about the worksite protection arrangements.
2. Protection Officer establishes Lookout and **additional Lookout** watching for rail traffic approach at the designated locations on Lithgow Platform. (See below and diagram)
3. Workers start work
4. Workers move to a safe place.
5. Repeat steps 3 – 4 until workers complete work at 96.6 Signal
6. Once work is complete, all workers move into a safe place.
7. Protection Officer recalls Lookouts.

ADDITIONAL DETAILS

Two-way running / multiple entry points

Lithgow Yard is a two-way running area. Rail traffic movements can occur in any direction.

A Lookout is placed watching both directions and must provide warning for any rail traffic approach. Workers must move into a safe place when Lookouts provide a warning regardless of which line the rail traffic is approaching on.

Obstruction to Lookout’s Minimum Sighting Distance

Lookout must provide warning to workers when Minimum Sighting Distance is impeded by rail traffic on adjacent lines and also by passengers on the platform.

All workers must remain in a safe place until Lookout can re-establish Minimum Sighting Distance.

No safe place within platform limits

There is no easily accessible safe place for workers in the Danger Zone within Lithgow Station platform limits.

Workers must not enter the Danger Zone within the platform limits.

UNCONTROLLED COPY WHEN PRINTED

LOOKOUTS



Image 1: View of Up direction Additional Lookout at 155.690 KM on Lithgow platform.



Image 2: View of Up direction Lookout at 155.690 KM on Lithgow platform.

KEY LOCATIONS



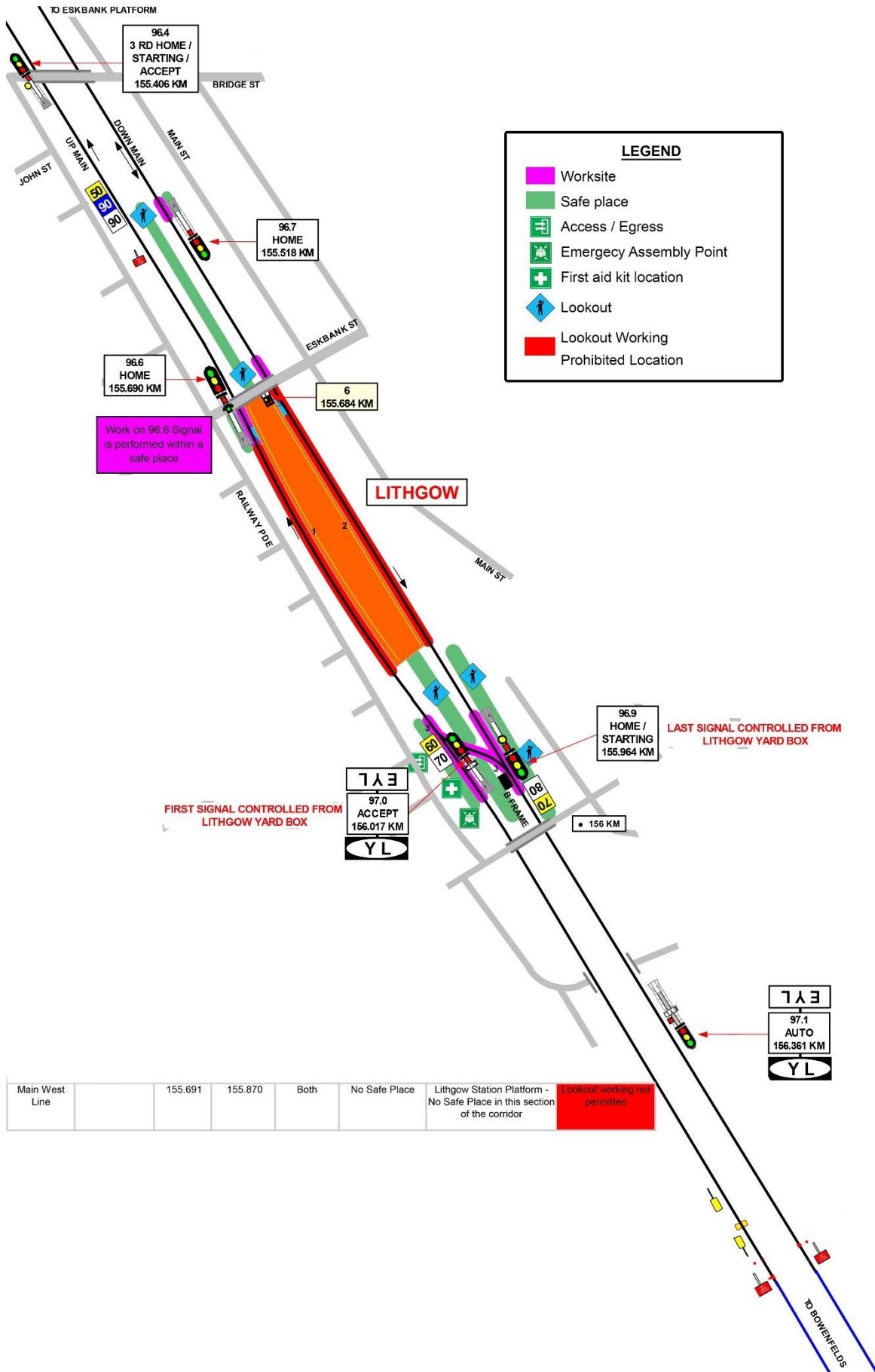
Image 3: Safe place for work at 96.6 Signal.



Image 4: Work Location at 96.6 Signal.

Diagram

UNCONTROLLED COPY WHEN PRINTED



Main West Line	155.691	155.870	Both	No Safe Place	Lithgow Station Platform - No Safe Place in this section of the corridor	Lookout working not permitted
----------------	---------	---------	------	---------------	--	-------------------------------

UNCONTROLLED COPY WHEN PRINTED

UNCONTROLLED COPY WHEN PRINTED

