


Lookout Working Worksite Protection for Glenfield Junction Routine Network Maintenance Activities

WORK DESCRIPTION	Routine network maintenance activities – Glenfield Junction (Lookout working)
WPP NUMBER	SW20B 10081
SCOPE:	<p>This SWI is applicable for the worksite protection arrangements using lookout working concerning routine network maintenance, defect management and repair of assets within the limits specified below and in the attached plan.</p> <p>Work activities include:</p> <ul style="list-style-type: none"> • Routine preventative and corrective work such as inspections and maintenance as appropriate for the type of protection being applied as part of this plan.
AUTHORISATIONS:	<p>Protection Officer: Protection Officer Level 1 or higher</p> <p>Lookout: Engineering Hand signaller Level 1 or higher or Protection Officer Level 1 or higher.</p>
SAFETY CONTROLS: Lookout working arrangements	<p>The nominated worksite location for Lookout Working is:</p> <ul style="list-style-type: none"> • Up and Down Main South Line between 24.7 Signal and 26.7 Signal. • Up and Down East Hills Line between EH 19.80 Signal and 58 points. • Up and Down Southwest Rail Link between 62 points and GL43.1 Signal <p>As work moves along the track, the Protection Officer must assess the new location and:</p> <ul style="list-style-type: none"> • Establish Lookouts as required to watch for approaching rail traffic from all entry points. • Designate and instruct which safe places the workers are to use as the work is completed along the work route within the worksite limits.
PRESTART REQUIREMENTS:	<p>Protection Officer assessment checklist must be completed before instructions in this SWI are followed.</p> <p>Tools and equipment required:</p> <ul style="list-style-type: none"> • Protection Officer requires a phone to contact the Signaller. • Lookouts require a high-visibility arm sleeve and a whistle/horn.
FURTHER INFORMATION:	<p><i>NWT 300 Planning work in the Rail Corridor</i> <i>NWT 310 Lookout Working</i> <i>NPR 711 Using Lookouts</i> <i>NPR 751 Calculating Minimum Warning Time</i> <i>NPR 712 Protecting work from rail traffic on adjacent lines</i> <i>NGE 200 Walking in the Danger Zone</i> <i>Lookout Working Prohibited Locations Register</i> <i>NLA 500 Lidcombe-Campbelltown</i></p>

UNCONTROLLED COPY WHEN PRINTED

Protection Officer assessment checklist		
Protection Officer's name:		Yes <i>(Tick if Yes)</i>
This document has not expired 12 months beyond the issue date.		
SWI details and protection arrangements have been reviewed and validated for the assessed worksite location, including: <ul style="list-style-type: none"> • On-site safety assessment has been completed for relevancy of works being undertaken • The required protection details, environment and tasks are unchanged from the details of this SWI 		
The Protection Officer and Qualified Workers deploying qualifications are current and have practiced in the last 6 months. If not practiced, then a Rail Safety Coach must be contacted for guidance.		
Corridor Safety Number	Protection Officer Signature	Date

 **Warning:** *If an above item does not apply, the Protection Officer must not use this Safe Work Instruction. A new worksite protection plan must be completed in accordance with NRF 014 Worksite Protection Pre-work briefing and NRF 015 Worksite Protection Plan.*

UNCONTROLLED COPY WHEN PRINTED

Worksite Protection Pre-work Briefing

Briefing date:

Protection Officer details

name signature contact no.

Work location:

Scope of work:

Worksite protection: Refer to Worksite Protection Plan for details

Hazards <small>(e.g. environment, plant, equipment, human error)</small>	Controls <small>(to be implemented to eliminate or reduce the risk to the lowest practicable level)</small>	Person responsible for Control
Approaching rail traffic	<ul style="list-style-type: none"> LW implemented Lookouts must be trained and competent to perform lookout duties. Lookouts must be rotated if performing lookout for extended periods of time. Workers to remain within worksite limits as set out in this procedure. Lookouts must be placed as per protection plan on page 8 and 9. Workers are to stop work and move to a safe place immediately on being warned by the lookouts 	Protection Officer and Lookout
Live adjacent lines	<ul style="list-style-type: none"> Lookouts must provide warning to workers when rail traffic is approaching from the adjacent line in either direction. 	Protection Officer and Lookout
Two - way running / multiple entry points into worksite	<ul style="list-style-type: none"> One Lookout placed watching each direction before work starts. Lookouts are to warn workers of approaching rail traffic, including rail traffic entering or travelling within the worksite. Workers are to stop work and move to a safe place. 	Protection Officer and Lookout
Obstruction to Minimum Sighting Distance	<ul style="list-style-type: none"> Lookouts must provide warning to the workers whenever their line of sight is obstructed by passing rail traffic. Workers must stop work and move to a safe place and reassess positioning and method 	Protection Officer and Lookout
Adjoining/Surrounding Worksites	<ul style="list-style-type: none"> Lookouts must have two independent audible warning devices that can be heard by workers over any noise generated by adjoining/surrounding worksites. Lookouts are to provide warning if their line of sight is obstructed by adjoining/surrounding worksites. 	Protection Officer and Lookout
Access to / Egress from worksite	<ul style="list-style-type: none"> Access and egress points must be agreed prior to entering the danger zone, consideration should be given to ease of access and safest possible entry and exit points. 	All
Slips, trips, falls and hazards carrying equipment	<ul style="list-style-type: none"> Protection Officer will assess and instruct when it is safe for workers to use NGE 200 Walking in the Danger Zone to move to the worksite or safe place. 	All
Mobile phone	<ul style="list-style-type: none"> Mobile phones use is not permitted in the danger zone unless being used by maintenance staff for critical maintenance communications or recording of defects. 	All

A final site inspection has been conducted immediately before commencing work, and any new hazards and controls have been included.

UNCONTROLLED COPY WHEN PRINTED

Worksite Protection Plan – Lookout Working

Signaller details

<input type="text" value="name"/>	Glenfield Panel	02 8568 3442
-----------------------------------	------------------------	---------------------

Protection Officer details

<input type="text" value="name"/>	<input type="text" value="signature"/>	<input type="text" value="contact no."/>
<input type="text" value="RSW or RIW No."/>	<input type="text" value="designation"/>	Planned duration <input type="text"/>

Workplace Supervisor details:

Type of work:

Routine network maintenance activities

Worksite location			
on the	<input type="text" value="Up and Down Main South Line"/>		<input type="checkbox"/>
between	<input type="text" value="24.7 Signal"/>	and	<input type="text" value="26.7 Signal"/>
on the	<input type="text" value="Up and Down East Hills Line"/>		<input type="checkbox"/>
between	<input type="text" value="EH 19.80 Signal"/>	and	<input type="text" value="58 Points"/>
on the	<input type="text" value="Up and Down Southwest Rail Link"/>		<input type="checkbox"/>
between	<input type="text" value="62 Points"/>	and	<input type="text" value="GL 43.1 Signal"/>

Worksite assessment

The Lookout Working Prohibited Locations Register been consulted Yes

Warning method

<input type="checkbox"/> Horn	<input type="checkbox"/> Whistle	<input type="checkbox"/> Voice
-------------------------------	----------------------------------	--------------------------------

Minimum Warning Time Calculations

Maximum track speed	<input type="text" value="115 km/h"/>			
Number of Lookouts used	<input type="text" value="2"/>	Position of Lookouts	<input type="text" value="31.849km"/>	to <input type="text" value="43.040km"/>
Number of additional Lookouts* used	<input type="text" value="0"/>	Position of Lookouts	<input type="text" value="km"/>	to <input type="text" value="km"/>

* Add an additional 5 seconds See Time if an additional Lookout is used

Note - Lookouts are relocated to positions within these KMs as workers move along the worksite.

2 sec	+	3 sec	+	10 sec	=	Minimum Warning Time (MWT)	15 sec	115 km/h	479 metres
2 sec	+	3 sec	+	10 sec			15 sec	75 km/h	312 metres
2 sec	+	3 sec	+	10 sec			15 sec	40 km/h	167 metres
<small>See Time (S)</small>		<small>Move Time (M)</small>		<small>Safe Time</small>		<small>(S+M+10 sec = MWT)</small>		<small>Track speed</small>	<small>Minimum Sighting Distance as calculated</small>

Note – Additional MWT calculations can be recorded in the Protection Officer’s Diary.

Where are the safe places identified for the Lookouts and the workers?

Lookouts:



Workers:

UNCONTROLLED COPY WHEN PRINTED



Ensure the workers have been briefed about these work details Yes

Diagrams, notes, and detailed instructions are over the next pages. These are to be read and followed as part of this worksite protection plan for Lookout Working.

INSTRUCTIONS:	<ol style="list-style-type: none"> 1. Workers enter the rail corridor via access gate S00 41.679D or M25 32.191D (see Images 3 and 4). 2. Protection Officer briefs workers about the worksite protection arrangements. 3. Protection Officer contacts Glenfield Panel and tells the Signaller about the use of Lookout Working. 4. Establish Lookouts at designated locations. 5. Workers start work up to designated locations. 6. Workers move to safe place. 7. Re-establish Lookouts at next designated location. 8. Repeat steps 6-8 until work is complete. 9. Workers move to a safe place. 10. Recall lookouts. 11. Workers egress the worksite via access gate S00 41.679D or M25 32.191D 12. Protection Officer contacts Glenfield Panel to end Lookout Working.
ADDITIONAL DETAILS	SSFL two way running use caution when crossing tracks and look both directions.
LOOKOUTS	<div style="display: flex; justify-content: space-between;"> <div style="width: 48%;">  <p>Image 1: Lookout view towards Casula station</p> </div> <div style="width: 48%;">  <p>Image 2: Lookout view towards Macquarie Fields Station</p> </div> </div>

UNCONTROLLED COPY WHEN PRINTED

ACCESS /
EGRESS

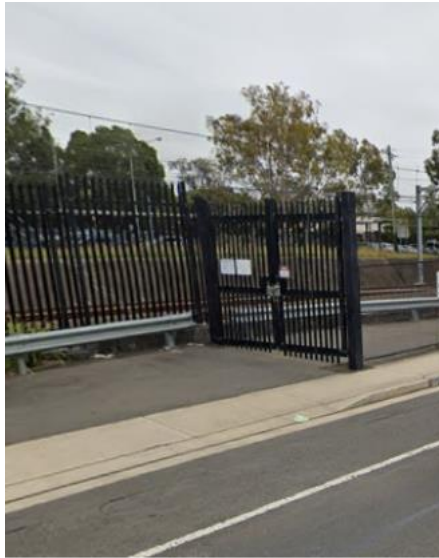


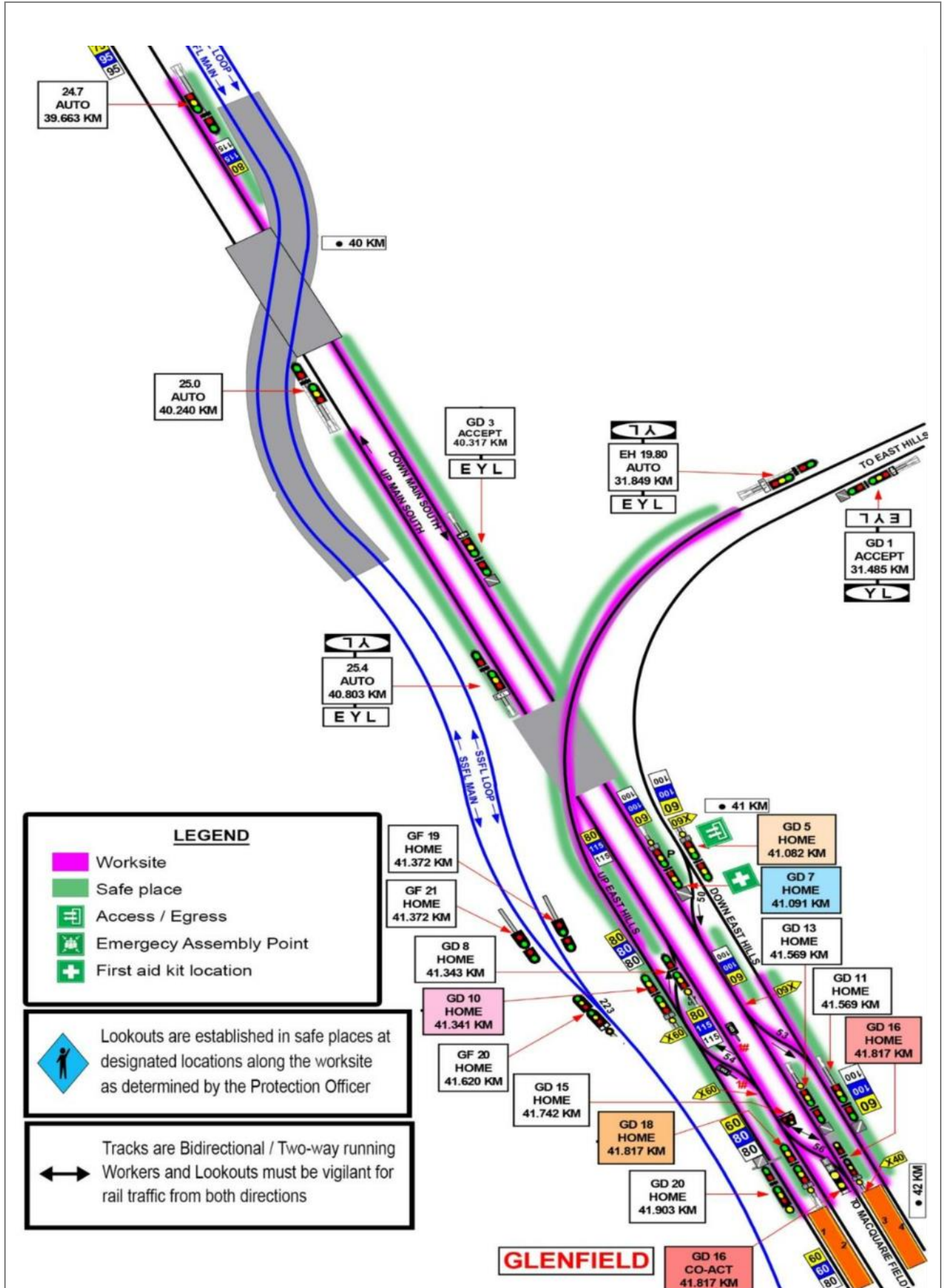
Image3: Access gate **S00 41.679D** Railway Parade



Image4: Access gate **M25 32.191D** Railway Parade

UNCONTROLLED COPY WHEN PRINTED

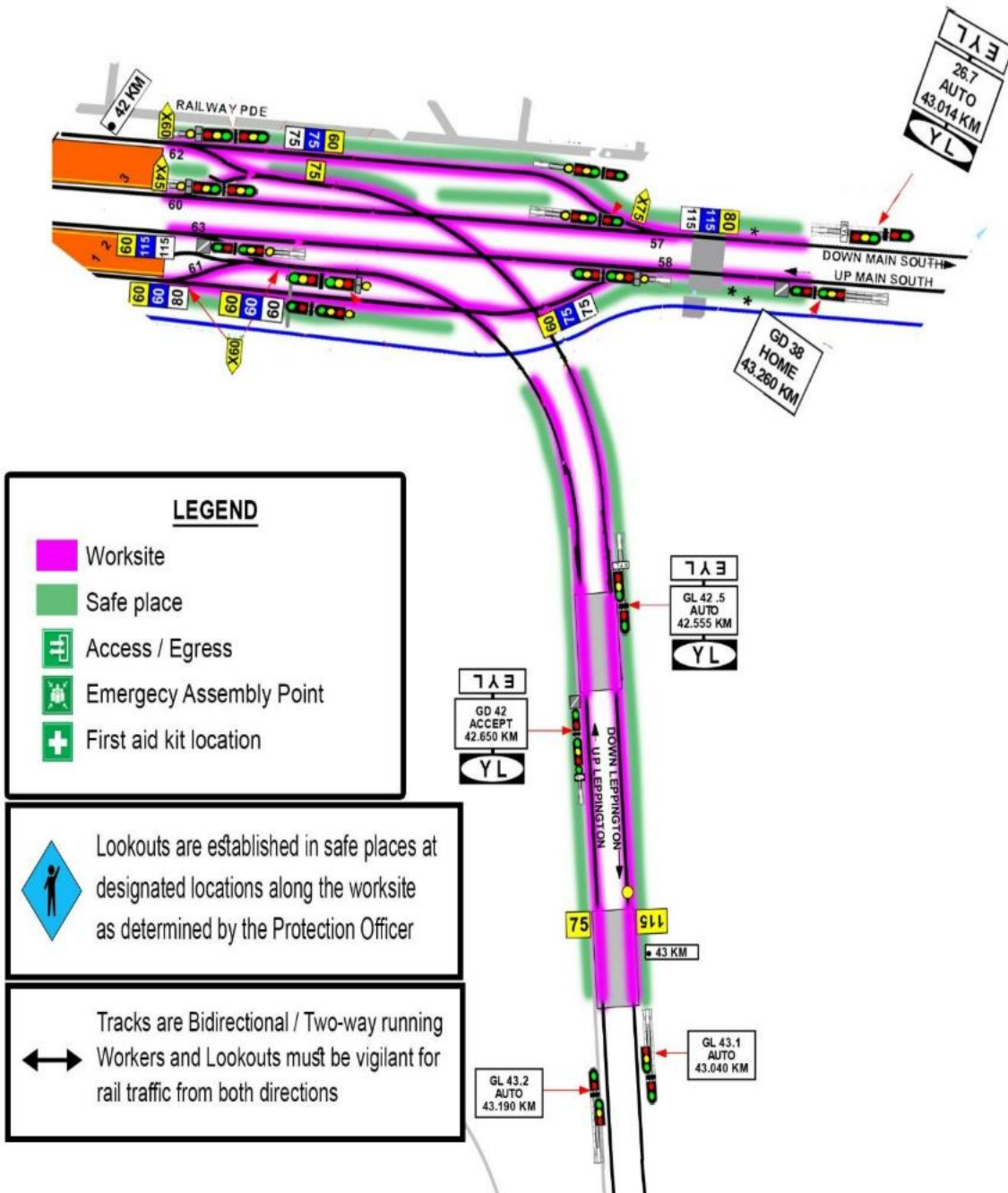
Diagram



UNCONTROLLED COPY WHEN PRINTED

UNCONTROLLED COPY WHEN PRINTED

Diagram



LEGEND

- Worksite
- Safe place
- + Access / Egress
- ⚠ Emergency Assembly Point
- + First aid kit location

Lookouts are established in safe places at designated locations along the worksite as determined by the Protection Officer

Tracks are Bidirectional / Two-way running
Workers and Lookouts must be vigilant for rail traffic from both directions

UNCONTROLLED COPY WHEN PRINTED

