


# ASB Worksite Protection for Villawood Routine Network Maintenance Activities

<b>WORK DESCRIPTION</b>	Routine network maintenance activities
<b>WPP NUMBER</b>	SWSC 10046
<b>SCOPE</b>	<p>This SWI is applicable for the worksite protection arrangements using ASB for routine network maintenance, defect management and repair of assets within the limits specified below and in the attached plan.</p> <p><b>Work activities include:</b> Routine preventative and corrective work such as inspections and maintenance as appropriate for the type of protection being applied as part of this plan.</p>
<b>AUTHORISATIONS:</b>	<b>Protection Officer:</b> Protection Officer Level 1 or higher
<b>SAFETY CONTROLS:</b> Absolute Signal Blocking (ASB) arrangements:	<p>Absolute Signal Blocking on the <b>Up</b> and <b>Down Main South line</b> is a fixed worksite location.</p> <p><b>For reference only:</b></p> <p>The assessed ASB protection for the worksite is:</p> <ul style="list-style-type: none"> <li>• <b>SP 102 signal</b> and <b>SP 112 signal</b> at STOP with blocking facilities applied on the <b>Up Main</b></li> <li>• <b>SP 81 signal</b> and <b>SP 75 signal</b> at STOP with blocking facilities applied on the <b>Down Main</b></li> </ul>
<b>PRESTART REQUIREMENTS:</b>	<p>Protection Officer assessment checklist must be completed before instructions in this SWI are followed.</p> <p><b>Tools and equipment required:</b></p> <ul style="list-style-type: none"> <li>• Protection Officer requires a phone to contact the Signaller</li> </ul>
<b>FURTHER INFORMATION:</b>	<p><i>NWT 300 Planning work in the Rail Corridor</i></p> <p><i>NWT 308 Absolute Signal Blocking</i></p> <p><i>NPR 703 Using Absolute Signal Blocking</i></p> <p><i>NGE 200 Walking in the Danger Zone</i></p> <p><i>NPR 712 Protecting work from rail traffic on adjacent lines</i></p> <p><i>NLA 502 Sefton Park Junction</i></p>

UNCONTROLLED COPY WHEN PRINTED



Protection Officer assessment checklist		
<b>Protection Officer's name:</b>		Yes (Tick if Yes)
This document has not expired 12 months beyond the issue date.		
On-site safety assessment has been completed and additional hazards and controls recorded on the pre-work briefing (Page 3).		
SWI details and protection arrangements have been reviewed and validated for the assessed worksite location.		
Corridor Safety Number	Protection Officer Signature	Date

 **Warning:** *If an above item does not apply, the Protection Officer must not use this Safe Work Instruction. A new worksite protection plan must be completed in accordance with NRF 014 Worksite Protection Pre-work briefing and NRF 015 Worksite Protection Plan.*

UNCONTROLLED COPY WHEN PRINTED

**Worksite Protection Pre-work Briefing**

Briefing date:

**Protection Officer Details**

Work location:

Scope of work:

Worksite protection:  Refer to Worksite Protection Plan for details

Hazards (e.g. Site specific hazards identified, including physical environment, human errors, plant and equipment)	Controls (to be implemented to eliminate or reduce the risk to the lowest practicable level)	Person responsible for Control
<b>Approaching rail traffic</b>	ASB implemented. Workers to remain within worksite limits. Workers are to stop work and move to a safe place immediately on being warned by the Protection Officer	Protection Officer
<b>Adjacent live lines</b>	Designated work and walk areas as instructed by the Protection Officer. Workers must remain within the ASB nominated worksite location limits whilst work is being performed.	Protection Officer
<b>Access to / Egress from worksite</b>	Protection Officer will assess and instruct when it is safe for workers to use NGE 200 Walking in the Danger Zone to move to and from the worksite or safe place.	All
<b>Mobile phone distraction</b>	Mobile phone usage is not allowed in the Danger Zone. Mobile Phones may be used only in a safe place and after informing the Protection Officer.	All

A final site inspection has been conducted immediately before commencing work, and any new hazards and controls have been included.

UNCONTROLLED COPY WHEN PRINTED





**Worksite Protection Plan – Absolute Signal Blocking**

**1. ASB Request – Protection Officer Details**

<input type="text" value="name"/>	<input type="text" value="signature"/>	<input type="text" value="contact no."/>
<input type="text" value="RSW or RIW no."/>	<input type="text" value="designation"/>	Planned Duration <input type="text"/>

Type of work:

**2. Worksite Location**

On the <input type="text" value="Up Main South Line"/>	from <input type="text" value="SP 102 signal"/>	to <input type="text" value="SP 76 signal"/>
On the <input type="text" value="Down Main South Line"/>	<input type="text" value="SP 81 signal"/>	<input type="text" value="SP 107 signal"/>

**3. Protection to be used**

<input type="text" value="Signal(s) at STOP with blocking facilities applied"/>	<input type="text" value="Points secured"/>
Protection is required from other Signallers at <input type="text" value="Location / panel"/>	<input type="text" value="Location / panel"/>

**4. Assurances**

All points of entry into the affected portion of track are protected and blocking facilities applied

The last rail traffic to pass the protection was  The last known location of rail traffic is

Confirm that there is no rail traffic between the protection and the worksite

**5. Authorisation**

Authorised by Signaller

Protection Number  Notes

6. Temporarily Suspending ASB					
Provide the name and worksite location	<input type="checkbox"/>	Provide the name and worksite location	<input type="checkbox"/>	Provide the name and worksite location	<input type="checkbox"/>
Workers and equipment are clear of the Danger Zone	<input type="checkbox"/>	Workers and equipment are clear of the Danger Zone	<input type="checkbox"/>	Workers and equipment are clear of the Danger Zone	<input type="checkbox"/>
Provide protection number	<input type="checkbox"/>	Provide protection number	<input type="checkbox"/>	Provide protection number	<input type="checkbox"/>
ASB suspended at	<input type="text" value="hr"/>	ASB suspended at	<input type="text" value="hr"/>	ASB suspended at	<input type="text" value="hr"/>
7. Re-establish ASB assurances					
The worksite location is identical	<input type="checkbox"/>	The worksite location is identical	<input type="checkbox"/>	The worksite location is identical	<input type="checkbox"/>
All points of entry into the affected portion of track are protected and blocking facilities applied	<input type="checkbox"/>	All points of entry into the affected portion of track are protected and blocking facilities applied	<input type="checkbox"/>	All points of entry into the affected portion of track are protected and blocking facilities applied	<input type="checkbox"/>
The last rail traffic to pass the protection was	<input type="text" value="rail traffic ID"/>	The last rail traffic to pass the protection was	<input type="text" value="rail traffic ID"/>	The last rail traffic to pass the protection was	<input type="text" value="rail traffic ID"/>
The last known location of rail traffic is	<input type="text" value="location"/>	The last known location of rail traffic is	<input type="text" value="location"/>	The last known location of rail traffic is	<input type="text" value="location"/>
There is no approaching rail traffic between the protection and the worksite	<input type="checkbox"/>	There is no approaching rail traffic between the protection and the worksite	<input type="checkbox"/>	There is no approaching rail traffic between the protection and the worksite	<input type="checkbox"/>
ASB re-established at	<input type="text" value="hr"/>	ASB re-established at	<input type="text" value="hr"/>	ASB re-established at	<input type="text" value="hr"/>
Protection No	<input type="text"/>	Protection No	<input type="text"/>	Protection No	<input type="text"/>

**8. Ending**

Provide name and worksite location  Workers and equipment clear of the Danger Zone  Provide protection number  Ended at

UNCONTROLLED COPY WHEN PRINTED



6. Temporarily Suspending ASB					
Provide the name and worksite location Workers and equipment are clear of the Danger Zone Provide protection number	<input type="checkbox"/> <input type="checkbox"/> <input type="checkbox"/>	Provide the name and worksite location Workers and equipment are clear of the Danger Zone Provide protection number	<input type="checkbox"/> <input type="checkbox"/> <input type="checkbox"/>	Provide the name and worksite location Workers and equipment are clear of the Danger Zone Provide protection number	<input type="checkbox"/> <input type="checkbox"/> <input type="checkbox"/>
ASB suspended at	hr	ASB suspended at	hr	ASB suspended at	hr
7. Re-establish ASB assurances					
The worksite location is identical All points of entry into the affected portion of track are protected and blocking facilities applied	<input type="checkbox"/> <input type="checkbox"/>	The worksite location is identical All points of entry into the affected portion of track are protected and blocking facilities applied	<input type="checkbox"/> <input type="checkbox"/>	The worksite location is identical All points of entry into the affected portion of track are protected and blocking facilities applied	<input type="checkbox"/> <input type="checkbox"/>
The last rail traffic to pass the protection was	rail traffic ID	The last rail traffic to pass the protection was	rail traffic ID	The last rail traffic to pass the protection was	rail traffic ID
The last known location of rail traffic is	Location	The last known location of rail traffic is	location	The last known location of rail traffic is	location
There is no approaching rail traffic between the protection and the worksite	<input type="checkbox"/>	There is no approaching rail traffic between the protection and the worksite	<input type="checkbox"/>	There is no approaching rail traffic between the protection and the worksite	<input type="checkbox"/>
ASB re-established at	hr	ASB re-established at	hr	ASB re-established at	hr
Protection No		Protection No		Protection No	

Notes

6. Temporarily Suspending ASB					
Provide the name and worksite location Workers and equipment are clear of the Danger Zone Provide protection number	<input type="checkbox"/> <input type="checkbox"/> <input type="checkbox"/>	Provide the name and worksite location Workers and equipment are clear of the Danger Zone Provide protection number	<input type="checkbox"/> <input type="checkbox"/> <input type="checkbox"/>	Provide the name and worksite location Workers and equipment are clear of the Danger Zone Provide protection number	<input type="checkbox"/> <input type="checkbox"/> <input type="checkbox"/>
ASB suspended at	hr	ASB suspended at	hr	ASB suspended at	hr
7. Re-establish ASB assurances					
The worksite location is identical All points of entry into the affected portion of track are protected and blocking facilities applied	<input type="checkbox"/> <input type="checkbox"/>	The worksite location is identical All points of entry into the affected portion of track are protected and blocking facilities applied	<input type="checkbox"/> <input type="checkbox"/>	The worksite location is identical All points of entry into the affected portion of track are protected and blocking facilities applied	<input type="checkbox"/> <input type="checkbox"/>
The last rail traffic to pass the protection was	rail traffic ID	The last rail traffic to pass the protection was	rail traffic ID	The last rail traffic to pass the protection was	rail traffic ID
The last known location of rail traffic is	location	The last known location of rail traffic is	location	The last known location of rail traffic is	location
There is no approaching rail traffic between the protection and the worksite	<input type="checkbox"/>	There is no approaching rail traffic between the protection and the worksite	<input type="checkbox"/>	There is no approaching rail traffic between the protection and the worksite	<input type="checkbox"/>
ASB re-established at	Hr	ASB re-established at	hr	ASB re-established at	hr
Protection No		Protection No		Protection No	

Notes

UNCONTROLLED COPY WHEN PRINTED



**INSTRUCTIONS:**

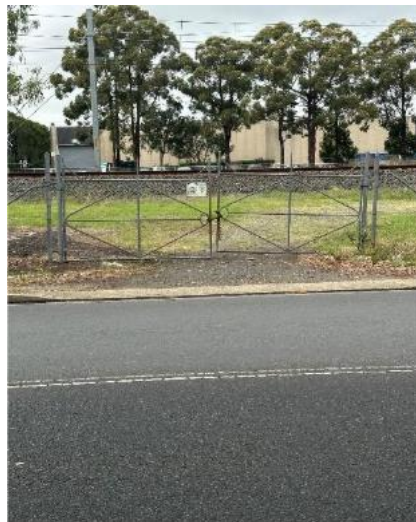
1. Workers enter the rail corridor via access gate on River Avenue on upside next to Leightonfield Sectioning Hut
2. Protection Officer contacts the Signaller at Sefton Panel to request ASB.
3. Protection Officer briefs workers about the worksite protection arrangements and safe places before the ASB has been authorised.
4. After ASB has been authorised. start work within the limits of the nominated worksite location.
5. Work commences – Protection Officer to warn workers of rail traffic approach on adjacent lines.
6. Workers immediately move to a safe place when warned.
7. Repeat steps 5- 6 until work is completed.
8. After work is complete, workers move to a safe place.
9. Protection Officer contacts the Signaller at Sefton Panel to end ASB.
10. All workers egress the rail corridor via access gate S00 24.452U at River Avenue on the upside of station or next to Leightonfield Sectioning Hut Gate S00 24.128 U at Christina Road

**ADDITIONAL DETAILS**

**Suspending ASB**

If the ASB is required to be suspended, the Protection Officer must make sure all workers and equipment are clear of the Danger Zone and are in a safe place before suspending the ASB.

**IMAGES:**



**Image 1: Leightonfield Access Gate – Christina Rd**  
S00 24.128 U



**Image 2: Villawood Access Gate – Riverwood Rd**  
S00 24.452 U



**Image 3: View of worksite towards Leightonfield station**



**Image 4: View of worksite towards Carramar station**

UNCONTROLLED COPY WHEN PRINTED



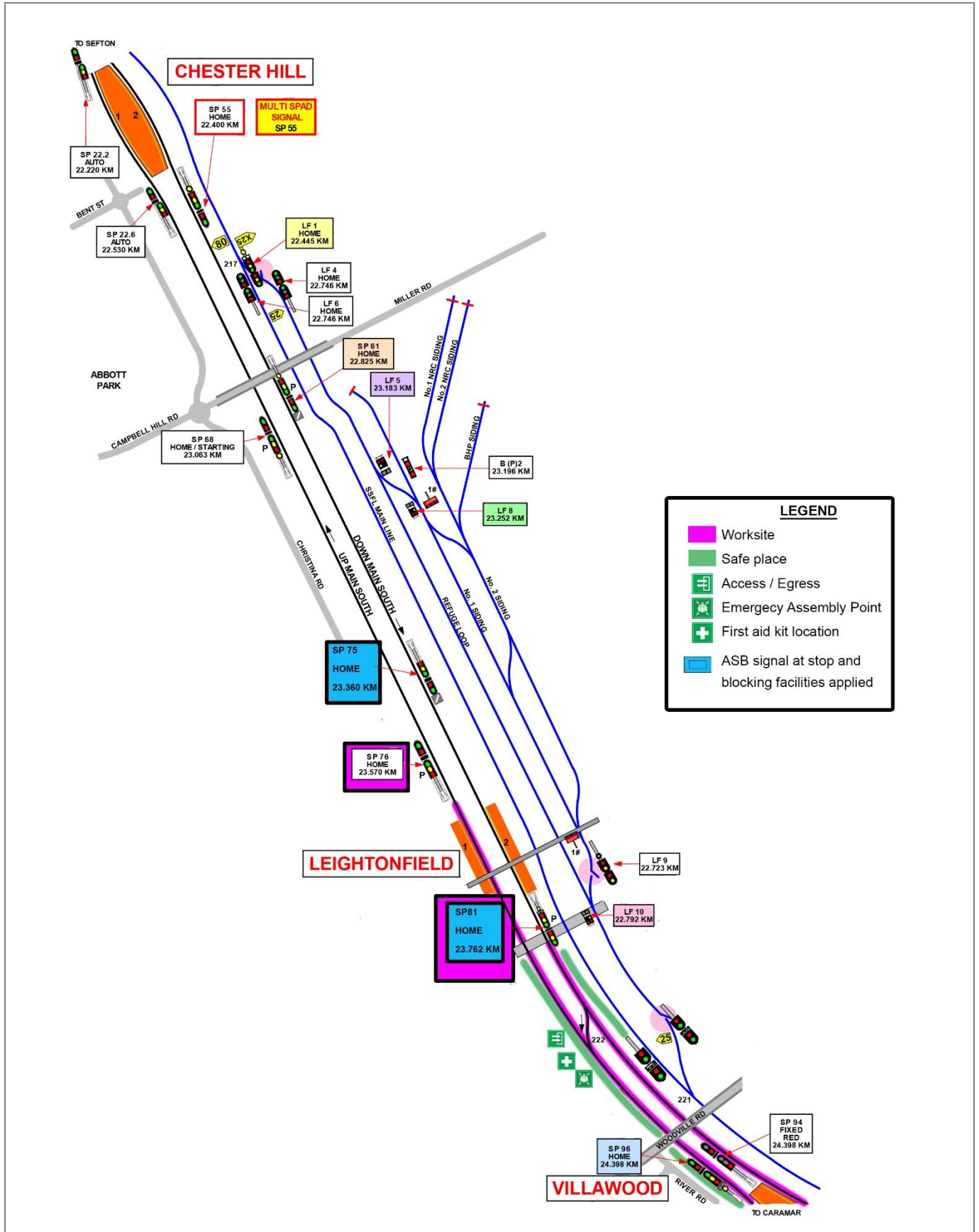
Image 3: View of city side of Villawood Station



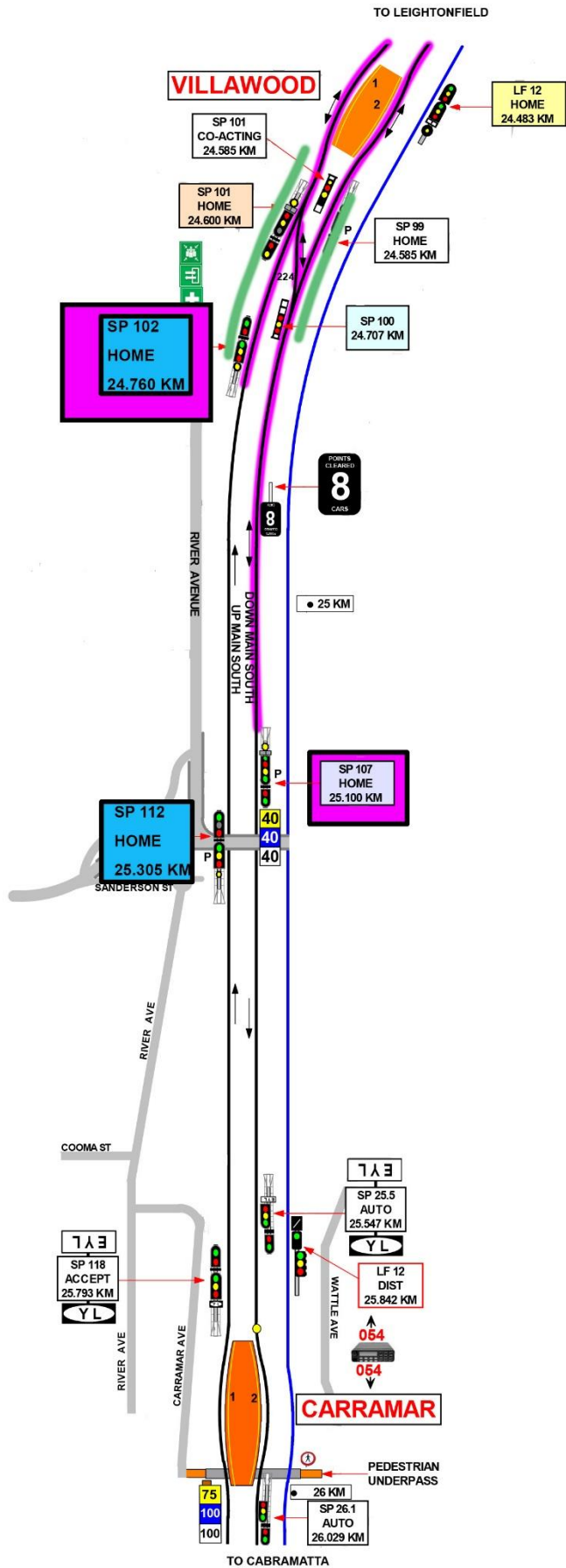
Image 4: View towards Leightonfield Station

UNCONTROLLED COPY WHEN PRINTED

Diagram



UNCONTROLLED COPY WHEN PRINTED



**LEGEND**

- Worksite
- Safe place
- Access / Egress
- Emergency Assembly Point
- First aid kit location
- ASB signal at stop and blocking facilities applied

UNCONTROLLED COPY WHEN PRINTED



