


ASB Worksite Protection for Cabramatta Routine Network Maintenance Activities

WORK DESCRIPTION	Routine network maintenance activities
WPP NUMBER	SW6C 10047
SCOPE	<p>This SWI is applicable for the worksite protection arrangements using ASB concerning routine network maintenance, defect management and repair of assets within the limits specified below and in the attached plan</p> <p>activities include:</p> <ul style="list-style-type: none"> • Routine preventative and corrective work such as inspections and maintenance as appropriate for the type of protection being applied as part of this plan.
AUTHORISATIONS:	Protection Officer: Protection Officer Level 1 or higher
SAFETY CONTROLS: Absolute Signal Blocking (ASB) arrangements:	<p>ASB established to exclude rail traffic on the</p> <ul style="list-style-type: none"> • Up Old Main South Line between S19.8 and S19.4 Signals • Down Old Main South Line between S19.7 and S19.9 Signals • Up Main South Line between S19.8 and SP27.4 Signals • Down Main South Line between LC17.5 and S19.9 Signals <p>For reference only; The assessed ASB protection is:</p> <ul style="list-style-type: none"> • S19.8 and S20.2 Signals at STOP with blocking facilities applied on the Up Main South Line • S19.7 and S19.3 Signals at STOP with blocking facilities applied on the Down Old Main South Line • LC17.5 and LC17.1 Signals at STOP with blocking facilities applied on the Down Main South Line. •
PRESTART REQUIREMENTS:	<p>Protection Officer assessment checklist must be completed before instructions in this SWI are followed. Tools and equipment required:</p> <ul style="list-style-type: none"> • Protection Officer requires a phone to contact the Signaller
FURTHER INFORMATION:	<p><i>NWT 300 Planning work in the Rail Corridor</i> <i>NWT 308 Absolute Signal Blocking</i> <i>NPR 703 Using Absolute Signal Blocking</i> <i>NGE 200 Walking in the Danger Zone</i> <i>NLA 500 Lidcombe - Campbelltown</i></p>

UNCONTROLLED COPY WHEN PRINTED



Protection Officer assessment checklist		
Protection Officer's name:		Yes (Tick if Yes)
This document has not expired 12 months beyond the issue date.		
On-site safety assessment has been completed and additional hazards and controls recorded on the pre-work briefing (Page 3).		
SWI details and protection arrangements have been reviewed and validated for the assessed worksite location.		
Corridor Safety Number	Protection Officer Signature	Date

 **Warning:** *If an above item does not apply, the Protection Officer must not use this Safe Work Instruction. A new worksite protection plan must be completed in accordance with NRF 014 Worksite Protection Pre-work briefing and NRF 015 Worksite Protection Plan.*

UNCONTROLLED COPY WHEN PRINTED

Worksite Protection Pre-work Briefing

Briefing date:

Protection Officer Details

name signature contact no.

Work location: **Cabramatta**

Scope of work: **Routine network maintenance activities**

Worksite protection: **ASB** Refer to Worksite Protection Plan for details

Hazards (e.g. Site specific hazards identified, including physical environment, human errors, plant and equipment)	Controls (to be implemented to eliminate or reduce the risk to the lowest practicable level)	Person responsible for Control
Approaching rail traffic	ASB implemented. Workers to remain within worksite limits.	Protection Officer
Adjacent live lines	Designated work and walk areas as instructed by the Protection Officer. Workers must remain within the ASB nominated worksite location limits whilst work is being performed.	Protection Officer
Access to / Egress from worksite	Protection Officer will assess and instruct when it is safe for workers to use NGE 200 Walking in the Danger Zone to move to and from the worksite or safe place.	All
Mobile phone distraction	Mobile phone usage is not allowed in the Danger Zone. Mobile phones may be used only in a safe place after informing the Protection Officer.	All

A final site inspection has been conducted immediately before commencing work, and any new hazards and controls have been included

UNCONTROLLED COPY WHEN PRINTED



Worksite Protection Plan – Absolute Signal Blocking

1. ASB Request – Protection Officer Details

<input type="text" value="name"/>	<input type="text" value="signature"/>	<input type="text" value="8568 3427"/>
<input type="text" value="RSW or RIW no."/>	<input type="text" value="designation"/>	Planned Duration <input type="text"/>

Type of work:

2. Worksite Location

On the	<input type="text" value="Up Old Main South Line"/>	from	<input type="text" value="S19.8 Signal"/>	to	<input type="text" value="S19.4 Signal"/>
On the	<input type="text" value="Down Old Main South Line"/>	from	<input type="text" value="S19.7 Signal"/>	to	<input type="text" value="S19.9 Signal"/>
On the	<input type="text" value="Up Main South Line"/>	from	<input type="text" value="S19.8 Signal"/>	to	<input type="text" value="SP27.4 Signal"/>
On the	<input type="text" value="Down Main South Line"/>	from	<input type="text" value="LC 17.5 Signal"/>	to	<input type="text" value="S19.9 Signal"/>

3. Protection to be used

<input type="text" value="Signal(s) at STOP with blocking facilities applied"/>	<input type="text" value="Points Secured"/>
Protection is required from other Signallers at	<input type="text" value="Location / panel"/>

4. Assurances

All points of entry into the affected portion of track are protected and blocking facilities applied

The last rail traffic to pass the protection was The last known location of rail traffic is

Confirm that there is no rail traffic between the protection and the worksite

5. Authorisation

Authorised by Signaller / /

Protection Number Notes

6. Temporarily Suspending ASB

Provide the name and worksite location <input type="checkbox"/>	Provide the name and worksite location <input type="checkbox"/>	Provide the name and worksite location <input type="checkbox"/>
Workers and equipment are clear of the Danger Zone <input type="checkbox"/>	Workers and equipment are clear of the Danger Zone <input type="checkbox"/>	Workers and equipment are clear of the Danger Zone <input type="checkbox"/>
Provide protection number <input type="checkbox"/>	Provide protection number <input type="checkbox"/>	Provide protection number <input type="checkbox"/>
ASB suspended at <input type="text"/> hr	ASB suspended at <input type="text"/> hr	ASB suspended at <input type="text"/> hr

7. Re-establish ASB assurances

The worksite location is identical <input type="checkbox"/>	The worksite location is identical <input type="checkbox"/>	The worksite location is identical <input type="checkbox"/>
All points of entry into the affected portion of track are protected and blocking facilities applied <input type="checkbox"/>	All points of entry into the affected portion of track are protected and blocking facilities applied <input type="checkbox"/>	All points of entry into the affected portion of track are protected and blocking facilities applied <input type="checkbox"/>
The last rail traffic to pass the protection was <input type="text" value="rail traffic ID"/>	The last rail traffic to pass the protection was <input type="text" value="rail traffic ID"/>	The last rail traffic to pass the protection was <input type="text" value="rail traffic ID"/>
The last known location of rail traffic is <input type="text" value="location"/>	The last known location of rail traffic is <input type="text" value="location"/>	The last known location of rail traffic is <input type="text" value="location"/>

UNCONTROLLED COPY WHEN PRINTED



There is no approaching rail traffic between the protection and the worksite <input type="checkbox"/>	There is no approaching rail traffic between the protection and the worksite <input type="checkbox"/>	There is no approaching rail traffic between the protection and the worksite <input type="checkbox"/>
ASB re-established at <input type="text"/> hr	ASB re-established at <input type="text"/> hr	ASB re-established at <input type="text"/> hr
Protection No <input type="text"/>	Protection No <input type="text"/>	Protection No <input type="text"/>

8. Ending

Provide name and worksite location Workers and equipment clear of the Danger Zone Provide protection number Ended at hr

6. Temporarily Suspending ASB					
Provide the name and worksite location <input type="checkbox"/>	Provide the name and worksite location <input type="checkbox"/>	Provide the name and worksite location <input type="checkbox"/>	Provide the name and worksite location <input type="checkbox"/>	Provide the name and worksite location <input type="checkbox"/>	Provide the name and worksite location <input type="checkbox"/>
Workers and equipment are clear of the Danger Zone <input type="checkbox"/>	Workers and equipment are clear of the Danger Zone <input type="checkbox"/>	Workers and equipment are clear of the Danger Zone <input type="checkbox"/>	Workers and equipment are clear of the Danger Zone <input type="checkbox"/>	Workers and equipment are clear of the Danger Zone <input type="checkbox"/>	Workers and equipment are clear of the Danger Zone <input type="checkbox"/>
Provide protection number <input type="checkbox"/>	Provide protection number <input type="checkbox"/>	Provide protection number <input type="checkbox"/>	Provide protection number <input type="checkbox"/>	Provide protection number <input type="checkbox"/>	Provide protection number <input type="checkbox"/>
ASB suspended at <input type="text"/> hr	ASB suspended at <input type="text"/> hr	ASB suspended at <input type="text"/> hr	ASB suspended at <input type="text"/> hr	ASB suspended at <input type="text"/> hr	ASB suspended at <input type="text"/> hr
7. Re-establish ASB assurances					
The worksite location is identical <input type="checkbox"/>	The worksite location is identical <input type="checkbox"/>	The worksite location is identical <input type="checkbox"/>	The worksite location is identical <input type="checkbox"/>	The worksite location is identical <input type="checkbox"/>	The worksite location is identical <input type="checkbox"/>
All points of entry into the affected portion of track are protected and blocking facilities applied <input type="checkbox"/>	All points of entry into the affected portion of track are protected and blocking facilities applied <input type="checkbox"/>	All points of entry into the affected portion of track are protected and blocking facilities applied <input type="checkbox"/>	All points of entry into the affected portion of track are protected and blocking facilities applied <input type="checkbox"/>	All points of entry into the affected portion of track are protected and blocking facilities applied <input type="checkbox"/>	All points of entry into the affected portion of track are protected and blocking facilities applied <input type="checkbox"/>
The last rail traffic to pass the protection was <input type="text"/> rail traffic ID	The last rail traffic to pass the protection was <input type="text"/> rail traffic ID	The last rail traffic to pass the protection was <input type="text"/> rail traffic ID	The last rail traffic to pass the protection was <input type="text"/> rail traffic ID	The last rail traffic to pass the protection was <input type="text"/> rail traffic ID	The last rail traffic to pass the protection was <input type="text"/> rail traffic ID
The last known location of rail traffic is <input type="text"/> Location	The last known location of rail traffic is <input type="text"/> location	The last known location of rail traffic is <input type="text"/> location	The last known location of rail traffic is <input type="text"/> location	The last known location of rail traffic is <input type="text"/> location	The last known location of rail traffic is <input type="text"/> location
There is no approaching rail traffic between the protection and the worksite <input type="checkbox"/>	There is no approaching rail traffic between the protection and the worksite <input type="checkbox"/>	There is no approaching rail traffic between the protection and the worksite <input type="checkbox"/>	There is no approaching rail traffic between the protection and the worksite <input type="checkbox"/>	There is no approaching rail traffic between the protection and the worksite <input type="checkbox"/>	There is no approaching rail traffic between the protection and the worksite <input type="checkbox"/>
ASB re-established at <input type="text"/> hr	ASB re-established at <input type="text"/> hr	ASB re-established at <input type="text"/> hr	ASB re-established at <input type="text"/> hr	ASB re-established at <input type="text"/> hr	ASB re-established at <input type="text"/> hr
Protection No <input type="text"/>	Protection No <input type="text"/>	Protection No <input type="text"/>	Protection No <input type="text"/>	Protection No <input type="text"/>	Protection No <input type="text"/>

Notes

6. Temporarily Suspending ASB					
Provide the name and worksite location	<input type="checkbox"/>	Provide the name and worksite location	<input type="checkbox"/>	Provide the name and worksite location	<input type="checkbox"/>
Workers and equipment are clear of the Danger Zone	<input type="checkbox"/>	Workers and equipment are clear of the Danger Zone	<input type="checkbox"/>	Workers and equipment are clear of the Danger Zone	<input type="checkbox"/>
Provide protection number	<input type="checkbox"/>	Provide protection number	<input type="checkbox"/>	Provide protection number	<input type="checkbox"/>
ASB suspended at		hr	ASB suspended at		hr
7. Re-establish ASB assurances					
The worksite location is identical	<input type="checkbox"/>	The worksite location is identical	<input type="checkbox"/>	The worksite location is identical	<input type="checkbox"/>
All points of entry into the affected portion of track are protected and blocking facilities applied	<input type="checkbox"/>	All points of entry into the affected portion of track are protected and blocking facilities applied	<input type="checkbox"/>	All points of entry into the affected portion of track are protected and blocking facilities applied	<input type="checkbox"/>
The last rail traffic to pass the protection was		rail traffic ID	The last rail traffic to pass the protection was		rail traffic ID
The last known location of rail traffic is		location	The last known location of rail traffic is		location
There is no approaching rail traffic between the protection and the worksite	<input type="checkbox"/>	There is no approaching rail traffic between the protection and the worksite	<input type="checkbox"/>	There is no approaching rail traffic between the protection and the worksite	<input type="checkbox"/>
ASB re-established at		Hr	ASB re-established at		hr
Protection No			Protection No		

8. Ending

Provide name and worksite location Workers and equipment clear of the Danger Zone Provide protection number Ended at hr

UNCONTROLLED COPY WHEN PRINTED



INSTRUCTIONS:

1. Workers enter the rail corridor via access gate see Images below **M16 31.733 U** and **S00 27.519 U**.
2. Protection Officer briefs workers about the worksite protection arrangements.
3. Protection Officer contacts the Signaller at Sefton Panel to request ASB.
4. After ASB has been authorised. start work within the limits of the nominated worksite location.
5. Protection Officer instruct workers to move and remain in the safe place when ASB suspension is required.
6. After work is complete, workers move to a safe place.
7. Protection Officer contacts the Signaller at Sefton Panel to end ASB.
8. Repeat steps 4 – 6 until work is complete work.
9. Protection Officer contacts the Signaller at Sefton Panel to end ASB.

ADDITIONAL DETAILS

Suspending ASB

If the ASB is required to be suspended, the Protection Officer must make sure all workers and equipment are clear of the Danger Zone and are in a safe place before suspending the ASB.

IMAGES:



Image 1: Access gate NO: **M16 31.733 U** Station carpark



Image 2: access gate **S00 27.519 U** West street



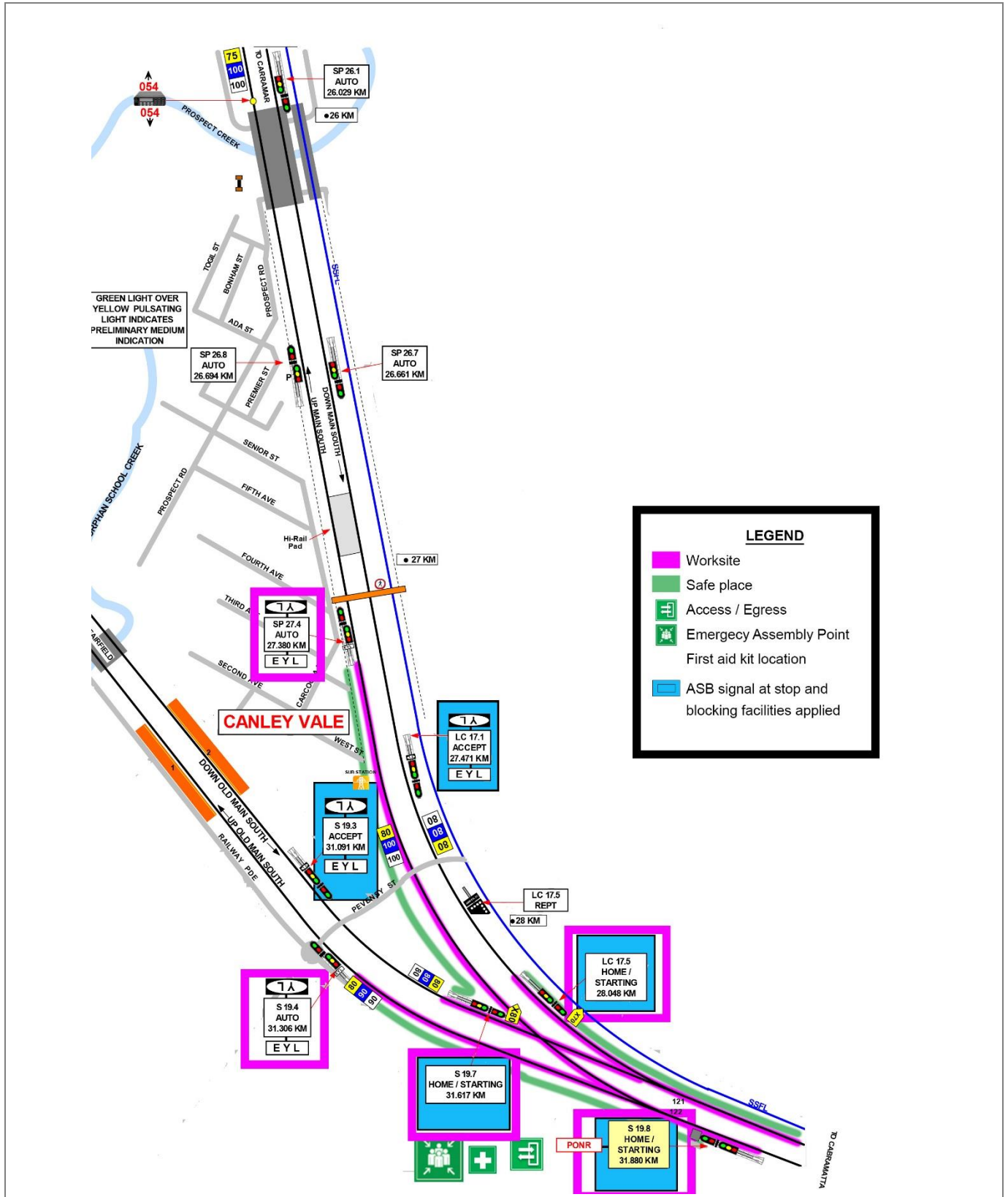
Image 3: View of worksite towards **Cabramatta** station



Image 4: View of worksite towards **Canley Vale** and **Carramar** stations

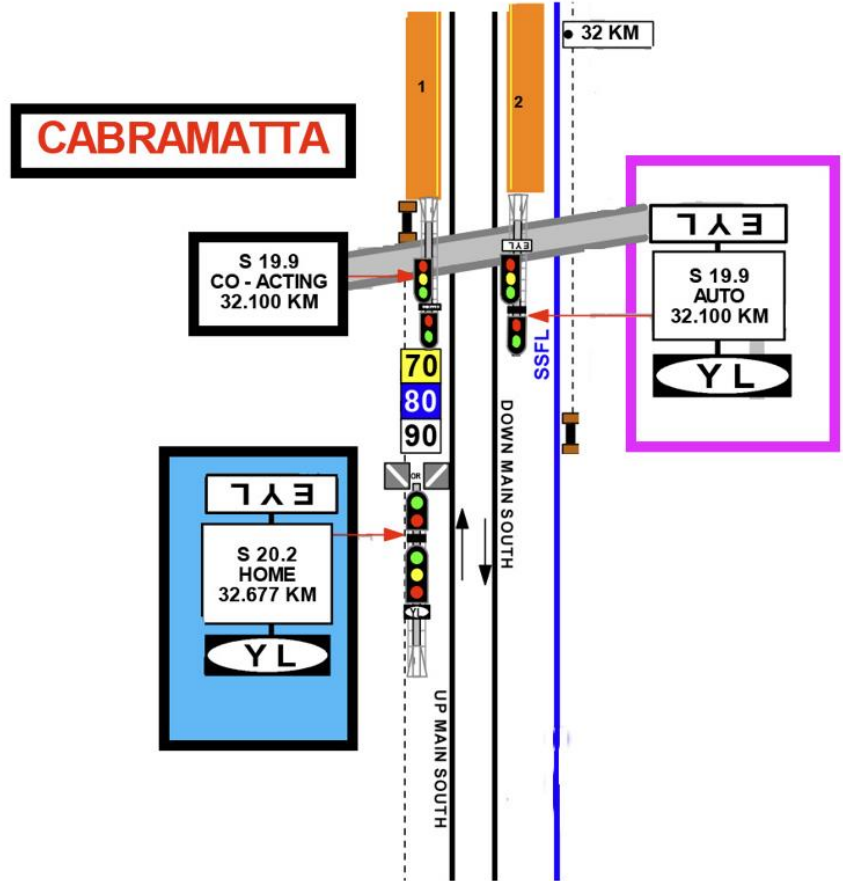
UNCONTROLLED COPY WHEN PRINTED

Diagram



UNCONTROLLED COPY WHEN PRINTED

Diagram



UNCONTROLLED COPY WHEN PRINTED

UNCONTROLLED COPY WHEN PRINTED

