


Worksite Protection for Coledale Routine Network Maintenance Activities

WORK DESCRIPTION	Routine Network Maintenance Activities
WPP NUMBER	SC8B 10120
SCOPE:	<p>This SWI is applicable for the worksite protection arrangements using lookout working concerning routine network maintenance, defect management and repair of assets within the limits specified below and in the attached plan.</p> <p>Work activities include:</p> <ul style="list-style-type: none"> • Routine preventative and corrective work such as inspections and maintenance as appropriate for the type of protection being applied as part of this plan.
AUTHORISATIONS:	<p>Protection Officer: Protection Officer Level 1 or higher</p> <p>Lookout: Engineering Hand signaller Level 1 or higher or Protection Officer Level 1 or higher.</p>
SAFETY CONTROLS: Lookout working arrangements	<p>The nominated worksite location for Lookout Working is a fixed worksite and includes the Up Illawarra Main Line between WG 605 U and WG 604 U and the Down Illawarra Main Line between WG 603 D and WG 602 D</p> <p>The Protection Officer must:</p> <ul style="list-style-type: none"> • Establish Lookouts as required to watch for approaching rail traffic from all entry points • Designate and instruct which safe places the workers are to use as the work is completed along the work route within the worksite limits.
PRESTART REQUIREMENTS:	<p>Protection Officer assessment checklist must be completed before instructions in this SWI are followed.</p> <p>Tools and equipment required:</p> <ul style="list-style-type: none"> • Protection Officer requires a phone to contact the Signaller. <p>Lookouts require a high-visibility arm sleeve and a whistle/horn.</p>
FURTHER INFORMATION:	<p><i>NWT 300 Planning work in the Rail Corridor</i></p> <p><i>NWT 310 Lookout Working</i></p> <p><i>NPR 711 Using Lookouts</i></p> <p><i>NPR 751 Calculating Minimum Warning Time</i></p> <p><i>NPR 712 Protecting work from rail traffic on adjacent lines</i></p> <p><i>NGE 200 Walking in the Danger Zone</i></p> <p><i>Lookout Working Prohibited Locations Register</i></p> <p><i>NLA 410 Sutherland to Wollongong</i></p>

UNCONTROLLED COPY WHEN PRINTED

Protection Officer assessment checklist		
Protection Officer's name:		Yes (Tick if Yes)
This document has not expired 12 months beyond the issue date.		
SWI details and protection arrangements have been reviewed and validated for the assessed worksite location, including: On-site safety assessment has been completed for relevancy of works being undertaken The required protection details, environment and tasks are unchanged from the details of this SWI		
Corridor Safety Number	Protection Officer Signature	Date

 **Warning:** *If an above item does not apply, the Protection Officer must not use this Safe Work Instruction. A new worksite protection plan must be completed in accordance with NRF 014 Worksite Protection Pre-work briefing and NRF 015 Worksite Protection Plan.*

UNCONTROLLED COPY WHEN PRINTED

Worksite Protection Pre-work Briefing

Briefing date:

/	/
---	---

Protection Officer details

name

signature

contact No.

Work location:

Coledale

Scope of work:

Routine Network Maintenance Activities

Worksite protection:

Lookout Working

Refer to Worksite Protection Plan for details

Hazards (e.g. environment, plant, equipment, human error)	Controls (to be implemented to eliminate or reduce the risk to the lowest practicable level)	Person responsible for Control
Approaching rail traffic	<ul style="list-style-type: none"> Lookouts must be trained and competent to perform lookout duties. Lookouts must be rotated if performing lookout for extended periods of time Workers to remain within worksite limits as set out in this procedure. Lookouts must be placed as per protection plan on page 8. Workers are to stop work and move to a safe place immediately on being warned by the lookouts 	Protection Officer and Lookout
Live adjacent lines	Lookouts must provide warning to workers when rail traffic is approaching from the adjacent line in either direction.	Protection Officer and Lookout
Two - way running / multiple entry points into worksite	One Lookout placed watching each direction before work starts. Lookouts are to warn workers of approaching rail traffic, including rail traffic entering or travelling within the worksite. Workers are to stop work and move to a safe place.	Protection Officer and Lookout
Obstruction to Minimum Sighting Distance	Lookouts must provide warning to the workers whenever their line of sight is obstructed by passing rail traffic. Workers must stop work and move to a safe place and reassess positioning and method	Protection Officer and Lookout
Adjoining/Surrounding Worksites	<ul style="list-style-type: none"> Lookouts must have two independent audible warning devices that can be heard by workers over any noise generated by adjoining/surrounding worksites. Lookouts are to provide warning if their line of sight is obstructed by adjoining/surrounding worksites. 	Protection Officer and Lookout
Access to / Egress from worksite	Access and egress points must be agreed prior to entering the danger zone, consideration should be given to ease of access and safest possible entry and exit points.	All
Slips, trips, falls and hazards carrying equipment	Protection Officer will assess and instruct when it is safe for workers to use NGE 200 Walking in the Danger Zone to move to the worksite or safe place.	All
Mobile phone	Mobile phones use is not permitted in the danger zone unless being used by maintenance staff for critical maintenance communications or recording of defects.	All

A final site inspection has been conducted immediately before commencing work, and any new hazards and controls have been included.

UNCONTROLLED COPY WHEN PRINTED



Worksite Protection Plan – Lookout Working

Signaller Details

name	Wollongong North Panel	02 4223 5446
------	-------------------------------	---------------------

Protection Officer Details

name	signature	contact No.
RSW or RIW No.	designation	Planned duration

Workplace Supervisor details:

Type of work:

Worksite location

on the

between and

on the

between and

Worksite assessment

The Lookout Working Prohibited Locations Register been consulted Yes

Warning method

Horn	Whistle
------	---------

Minimum Warning Time Calculations

Maximum track speed	<input style="width: 100%;" type="text" value="100 km/h"/>
Number of Lookouts used	<input style="width: 100%;" type="text" value="2"/> Position of Lookouts <input style="width: 15%; text-align: center;" type="text" value="67.037 km"/> and <input style="width: 15%; text-align: center;" type="text" value="67.032 km"/>
Number of additional Lookouts* used	<input style="width: 100%;" type="text" value="2"/> Position of Lookouts <input style="width: 15%; text-align: center;" type="text" value="66.759 km"/> and <input style="width: 15%; text-align: center;" type="text" value="67.349 km"/>

* Add an additional 5 seconds See Time if an additional Lookout is used

7 sec	+	3 sec	+	10 sec	= Minimum	20 sec	100 km/h	556 metres
7 sec	+	3 sec	+	10 sec	Warning Time	20 sec	85 km/h	473 metres
<small>See Time (S)</small>		<small>Move Time (M)</small>		<small>Safe Time</small>	<small>(S+M+10 sec = MWT)</small>		<small>Track speed</small>	<small>Minimum Sighting Distance as calculated</small>

Note – Additional MWT calculations can be recorded in the Protection Officer’s Diary.

Where are the safe places identified for the Lookouts and the workers?

Lookouts:	<input style="width: 100%;" type="text" value="Up and Down Cess"/>
Workers:	<input style="width: 100%;" type="text" value="Up and Down Cess"/>

Ensure the workers have been briefed about these work details Yes

Diagrams, notes, and detailed instructions are over the next pages. These are to be read and followed as part of this worksite protection plan for Lookout Working.

UNCONTROLLED COPY WHEN PRINTED

INSTRUCTIONS:

1. Workers enter the rail corridor via **100 68.188 U** off Park Avenue at Austinmer
2. Protection Officer briefs workers about the worksite protection arrangements.
3. Protection Officer contacts Wollongong North Panel and tells the Signaller about the use of Lookout Working.
4. Establish Lookouts at designated locations.
5. Workers start work up to designated locations.
6. Workers move to safe place.
7. Re-establish Lookouts at next designated location.
8. Repeat steps 6-8 until work is complete.
9. Workers move to a safe place.
10. Recall lookouts.
11. Workers egress the worksite via **100 68.188 U** off Park Avenue at Austinmer
12. Protection Officer contacts Wollongong North Panel to end Lookout Working.

ADDITIONAL DETAILS

Obstruction to Minimum Sighting Distance

Stabled rail traffic on any tracks and conditions on the day may obstruct minimum sighting distance. When this hazard is identified, workers must stop work and move to a safe place until the Protection Officer makes an assessment and relocates lookouts to achieve the required minimum sighting distance.

LOOKOUTS



Image 1. Up Lookout (67.032 Km)



Image 2. Up Additional Lookout (67.349 Km)



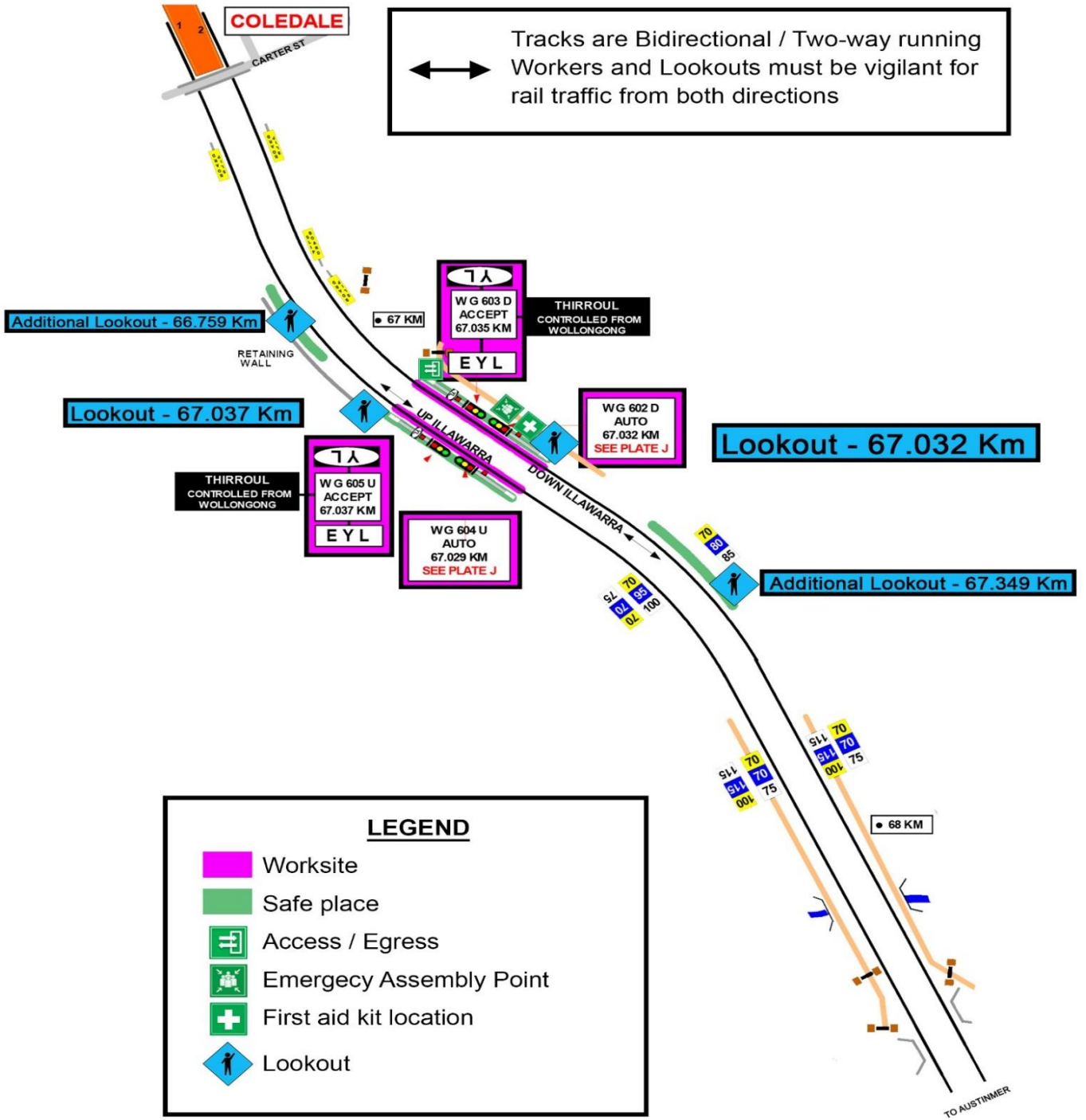
Image 3. Down Lookout (67.037 Km)



Image 4. Down Additional Lookout (66.759 Km)

UNCONTROLLED COPY WHEN PRINTED

Diagram



UNCONTROLLED COPY WHEN PRINTED

