


# Lookout Working Worksite Protection for Bankstown Routine Network Maintenance Activities

<b>WORK DESCRIPTION</b>	Routine Network Maintenance Activities
<b>WPP NUMBER</b>	<b>CW4B 10088</b>
<b>SCOPE:</b>	<p>This SWI is applicable for the worksite protection arrangements using lookout working concerning routine network maintenance, defect management and repair of assets within the limits specified below and in the attached plan.</p> <p>Work activities include:</p> <ul style="list-style-type: none"> <li>• Routine preventative and corrective work such as inspections and maintenance as appropriate for the type of protection being applied as part of this plan.</li> </ul>
<b>AUTHORISATIONS:</b>	<p><b>Protection Officer:</b> Protection Officer Level 1 or higher</p> <p><b>Lookout:</b> Engineering Hand signaller Level 1 or higher or Protection Officer Level 1 or higher.</p>
<b>SAFETY CONTROLS:</b> Lookout working arrangements	<p>The nominated worksite location for Lookout Working is a fixed worksite and includes the <b>Up and Down Bankstown Lines</b> between <b>SM 341 Signal</b> and <b>SM 346 Signal</b></p> <p>The Protection Officer must:</p> <ul style="list-style-type: none"> <li>• Establish Lookouts as required to watch for approaching rail traffic from all entry points</li> <li>• Designate and instruct which safe places the workers are to use as the work is completed along the work route within the worksite limits.</li> </ul>
<b>PRESTART REQUIREMENTS:</b>	<p>Protection Officer assessment checklist must be completed before instructions in this SWI are followed.</p> <p>Tools and equipment required:</p> <ul style="list-style-type: none"> <li>• Protection Officer requires a phone to contact the Signaller.</li> </ul> <p>Lookouts require a high-visibility arm sleeve and a whistle/horn.</p>
<b>FURTHER INFORMATION:</b>	<p><i>NWT 300 Planning work in the Rail Corridor</i></p> <p><i>NWT 310 Lookout Working</i></p> <p><i>NPR 711 Using Lookouts</i></p> <p><i>NPR 751 Calculating Minimum Warning Time</i></p> <p><i>NPR 712 Protecting work from rail traffic on adjacent lines</i></p> <p><i>NGE 200 Walking in the Danger Zone</i></p> <p><i>NLA 508 Bankstown to Sefton Park Junction</i></p> <p><i>Lookout Working Prohibited Locations Register</i></p>

UNCONTROLLED COPY WHEN PRINTED

**Protection Officer assessment checklist**

<b>Protection Officer's name:</b>		<b>Yes</b> (Tick if Yes)
This document has not expired 12 months beyond the issue date.		
SWI details and protection arrangements have been reviewed and validated for the assessed worksite location, including: On-site safety assessment has been completed for relevancy of works being undertaken The required protection details, environment and tasks are unchanged from the details of this SWI		
The Protection Officer and Qualified Workers deploying qualifications are current and have practiced in the last 6 months. If not practiced, then a Rail Safety Coach must be contacted for guidance.		
Corridor Safety Number	Protection Officer Signature	Date

 **Warning:** *If an above item does not apply, the Protection Officer must not use this Safe Work Instruction. A new worksite protection plan must be completed in accordance with NRF 014 Worksite Protection Pre-work briefing and NRF 015 Worksite Protection Plan.*

UNCONTROLLED COPY WHEN PRINTED

**Worksite Protection Pre-work Briefing**

Briefing date: / /

**Protection Officer details**

name signature contact No.

Work location: **Up and Down Bankstown Line**

Scope of work: **Routine Network Maintenance Activities**

Worksite protection: **Lookout Working** Refer to Worksite Protection Plan for details

Hazards (e.g. environment, plant, equipment, human error)	Controls (to be implemented to eliminate or reduce the risk to the lowest practicable level)	Person responsible for Control
Approaching rail traffic	<ul style="list-style-type: none"> <li>Lookouts must be trained and competent to perform lookout duties.</li> <li>Lookouts must be rotated if performing lookout for extended periods of time</li> <li>Workers to remain within worksite limits as set out in this procedure.</li> <li>Lookouts must be placed as per protection plan on page 8.</li> <li>Workers are to stop work and move to a safe place immediately on being warned by the lookouts</li> </ul>	Protection Officer and Lookout
Live adjacent lines	Lookouts must provide warnings to workers when rail traffic is approaching from the adjacent line in either direction.	Protection Officer and Lookout
Two - way running / multiple entry points into worksite	One Lookout placed watching each direction before work starts. Lookouts are to warn workers of approaching rail traffic, including rail traffic entering or travelling within the worksite. Workers are to stop work and move to a safe place.	Protection Officer and Lookout
Obstruction to Minimum Sighting Distance	Lookouts must provide warnings to the workers whenever their line of sight is obstructed by passing rail traffic. Workers must stop work and move to a safe place and reassess positioning and method	Protection Officer and Lookout
Adjoining/Surrounding Worksites	<ul style="list-style-type: none"> <li>Lookouts must have two independent audible warning devices that can be heard by workers over any noise generated by adjoining/surrounding worksites.</li> <li>Lookouts are to provide warning if their line of sight is obstructed by adjoining/surrounding worksites.</li> </ul>	Protection Officer and Lookout
Access to / Egress from worksite	Access and egress points must be agreed prior to entering the danger zone, consideration should be given to ease of access and safest possible entry and exit points.	All
Slips, trips, falls and hazards carrying equipment	Protection Officer will assess and instruct when it is safe for workers to use NGE 200 Walking in the Danger Zone to move to the worksite or safe place.	All
Mobile phone	Mobile phones use is not permitted in the danger zone unless being used by maintenance staff for critical maintenance communications or recording of defects.	All

A final site inspection has been conducted immediately before commencing work, and any new hazards and controls have been included.

UNCONTROLLED COPY WHEN PRINTED





**Worksite Protection Plan – Lookout Working**

**Signaller Details**

name	Sydenham Panel	02 9563 7137
------	----------------	--------------

**Protection Officer Details**

name	signature	contact No.
RSW or RIW No.	designation	Planned duration

Workplace Supervisor details:

Type of work:

**Worksite location**

on the

between  and

**Worksite assessment**

The Lookout Working Prohibited Locations Register been consulted Yes

**Warning method**

Horn	Whistle
------	---------

**Minimum Warning Time Calculations**

Maximum track speed	<input style="width: 100%;" type="text" value="80 km/h"/>
Number of Lookouts used	<input style="width: 100%;" type="text" value="2"/> Position of Lookouts <input style="width: 15%; text-align: center;" type="text" value="18.873 km"/> and <input style="width: 15%; text-align: center;" type="text" value="19.007 km"/>
Number of additional Lookouts* used	<input style="width: 100%;" type="text" value="X"/> Position of Lookouts <input style="width: 15%; text-align: center;" type="text" value="km"/> and <input style="width: 15%; text-align: center;" type="text" value="km"/>

\* Add an additional 5 seconds See Time if an additional Lookout is used

<input style="width: 50px; text-align: center;" type="text" value="2 sec"/>	+	<input style="width: 50px; text-align: center;" type="text" value="3 sec"/>	+	<input style="width: 50px; text-align: center;" type="text" value="10 sec"/>	= Minimum Warning Time	<input style="width: 50px; text-align: center;" type="text" value="15 sec"/>	<input style="width: 50px; text-align: center;" type="text" value="80 km/h"/>	<input style="width: 50px; text-align: center;" type="text" value="334 metres"/>
<input style="width: 50px; text-align: center;" type="text" value="2 sec"/>	+	<input style="width: 50px; text-align: center;" type="text" value="3 sec"/>	+	<input style="width: 50px; text-align: center;" type="text" value="10 sec"/>	<b>(MWT)</b>	<input style="width: 50px; text-align: center;" type="text" value="15 sec"/>	<input style="width: 50px; text-align: center;" type="text" value="60 km/h"/>	<input style="width: 50px; text-align: center;" type="text" value="250 metres"/>
<small>See Time (S)</small>		<small>Move Time (M)</small>		<small>Safe Time</small>	<small>(S+M+10 sec = MWT)</small>		<small>Track speed</small>	<small>Minimum Sighting Distance as calculated</small>

Note - Additional MWT calculations can be recorded in the Protection Officer's Diary.

**Where are the safe places identified for the Lookouts and the workers?**

Lookouts:	<input style="width: 100%;" type="text" value="Cess/behind structures"/>
Workers:	<input style="width: 100%;" type="text" value="Cess/behind structures"/>

**Ensure the workers have been briefed about these work details** Yes

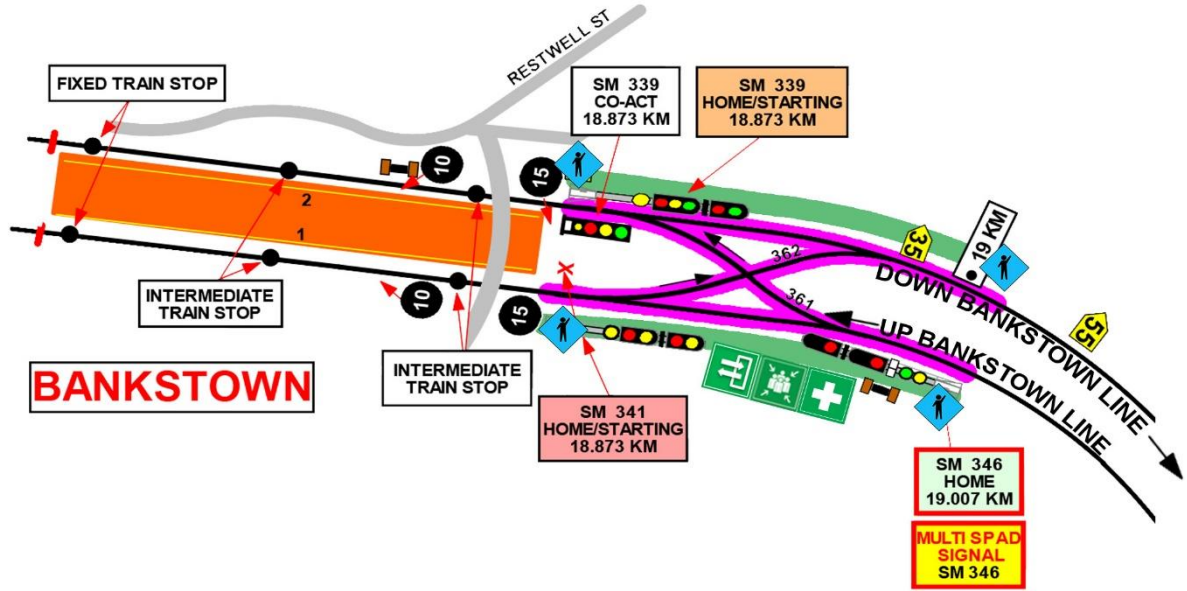
Diagrams, notes, and detailed instructions are over the next pages. These are to be read and followed as part of this worksite protection plan for Lookout Working.

UNCONTROLLED COPY WHEN PRINTED

<b>INSTRUCTIONS:</b>	<ol style="list-style-type: none"> <li>1. Workers enter the rail corridor via Access gate or Bankstown Station Platform</li> <li>2. Protection Officer briefs workers about the worksite protection arrangements.</li> <li>3. Protection Officer contacts Sydenham Panel and tells the Signaller about the use of Lookout Working.</li> <li>4. Establish Lookouts at designated locations.</li> <li>5. Workers start work up to designated locations.</li> <li>6. Workers move to safe place.</li> <li>7. Re-establish Lookouts at next designated location.</li> <li>8. Repeat steps 6-8 until work is complete.</li> <li>9. Workers move to a safe place.</li> <li>10. Recall lookouts.</li> <li>11. Workers egress the worksite via Access Gate or Bankstown Station Platform</li> <li>12. Protection Officer contacts Sydenham Panel to end Lookout Working.</li> </ol>
<b>ADDITIONAL DETAILS</b>	<p>Obstruction to Minimum Sighting Distance</p> <p>Stabled rail traffic on any tracks and conditions on the day may obstruct minimum sighting distance. When this hazard is identified, workers must stop work and move to a safe place until the Protection Officer makes an assessment and relocates lookouts to achieve the required minimum sighting distance.</p>

UNCONTROLLED COPY WHEN PRINTED

Diagram



**LEGEND**

- Worksite
- Safe place
- ⇄ Access / Egress
- 👥 Emergency Assembly Point
- + First aid kit location
- 👤 Lookout

👤 Lookouts are established in safe places at designated locations along the worksite as determined by the Protection Officer

UNCONTROLLED COPY WHEN PRINTED

