

Lookout Working Worksite Protection for Eveleigh Yard routine network maintenance activities

DOCUMENT NO.	D2021/29552
WORK DESCRIPTION	Routine network maintenance activities – Eveleigh Yard (Lookout working)
WPP Number	CE5B 11040
SCOPE:	<p>This SWI is applicable for the worksite protection arrangements using lookout working concerning routine network maintenance, defect management and repair of assets within the limits specified below and in the attached plan.</p> <p>Work activities include:</p> <p>Routine preventative and corrective work such as inspections and maintenance as appropriate for the type of protection being applied as part of this plan.</p>
AUTHORISATIONS:	<p>Protection Officer: Protection Officer Level 1 or higher</p> <p>Lookout: Engineering Hand signaller Level 1 or higher or Protection Officer Level 1 or higher.</p>
SAFETY CONTROLS: Lookout working arrangements	<p>The nominated worksite location is: Eastern Sidings, Western & all tracks withing Eveleigh Yard between the end of terminal lines (Eastern Sidings) and SY 541 Signals</p> <p>The nominated worksite location for Lookout Working is a moving worksite, where workers are working along the track within the limits of the nominated worksite location up to the where the Lookout is established.</p> <p>As work moves along the track, the Protection Officer must assess the new location and:</p> <ul style="list-style-type: none"> Establish Lookouts as required to watch for approaching rail traffic from all entry points Designate and instruct which safe places the workers are to use as the work is completed along the work route within the worksite limits.
PRESTART REQUIREMENTS:	<p>Protection Officer assessment checklist must be completed before instructions in this SWI are followed.</p> <p>Tools and equipment required:</p> <ul style="list-style-type: none"> Protection Officer requires a phone to contact the Signaller. Lookouts require a high-visibility arm sleeve and a whistle/horn.
FURTHER INFORMATION:	<p><i>NWT 300 Planning work in the Rail Corridor</i></p> <p><i>NWT 310 Lookout Working</i></p> <p><i>NPR 711 Using Lookouts</i></p> <p><i>NPR 751 Calculating Minimum Warning Time</i></p> <p><i>NPR 712 Protecting work from rail traffic on adjacent lines</i></p> <p><i>NGE 200 Walking in the Danger Zone</i></p> <p><i>NLA 112 Eveleigh</i></p> <p><i>Lookout Working Prohibited Locations Register</i></p>

Protection Officer assessment checklist

Protection Officer's name:		Yes (Tick if Yes)
This document has not expired 12 months beyond the issue date.		
SWI details and protection arrangements have been reviewed and validated for the assessed worksite location, including: <ul style="list-style-type: none"> On-site safety assessment has been completed for relevancy of works being undertaken The required protection details, environment and tasks are unchanged from the details of this SWI 		
The Protection Officer and Qualified Workers deploying qualifications are current and have practiced in the last 6 months. If not practiced, then a Rail Safety Coach must be contacted for guidance.		
Corridor Safety Number	Protection Officer Signature	Date



Warning

If an above item does not apply, the Protection Officer must not use this Safe Work Instruction. A new worksite protection plan must be completed in accordance with NRF 014 Worksite Protection Pre-work briefing and NRF 015 Worksite Protection Plan.

Worksite Protection Pre-work Briefing

Briefing date: / /

Protection Officer details

name signature contact No.

Work location:

Scope of work:

Worksite protection: Refer to Worksite Protection Plan for details

Hazards (e.g. environment, plant, equipment, human error)	Controls (to be implemented to eliminate or reduce the risk to the lowest practicable level)	Person responsible for Control
Approaching rail traffic	Lookouts must be trained and competent to perform lookout duties. Lookouts must be rotated if performing lookout for extended periods of time Workers to remain within worksite limits as set out in this procedure. Lookouts must be placed as per protection plan on page 8. Workers are to stop work and move to a safe place immediately on being warned by the lookouts	Protection Officer and Lookout
Live adjacent lines	Lookouts must provide warning to workers when rail traffic is approaching from the adjacent line in either direction.	Protection Officer and Lookout
Two - way running / multiple entry points into worksite	One Lookout placed watching each direction before work starts. Lookouts are to warn workers of approaching rail traffic, including rail traffic entering or travelling within the worksite. Workers are to stop work and move to a safe place.	Protection Officer and Lookout
Obstruction to Minimum Sighting Distance	Lookouts must provide warning to the workers whenever their line of sight is obstructed by passing rail traffic. Workers must stop work and move to a safe place and reassess positioning and method	Protection Officer and Lookout
Adjoining/Surrounding Worksites	Lookouts must have two independent audible warning devices that can be heard by workers over any noise generated by adjoining/surrounding worksites. Lookouts are to provide warning if their line of sight is obstructed by adjoining/surrounding worksites.	Protection Officer and Lookout
Access to / Egress from worksite	Access and egress points must be agreed prior to entering the danger zone, consideration should be given to ease of access and safest possible entry and exit points.	All
Slips, trips, falls and hazards carrying equipment	Protection Officer will assess and instruct when it is safe for workers to use <i>NGE 200 Walking in the Danger Zone</i> to move to the worksite or safe place.	All
Mobile phone	Mobile phones use is not permitted in the danger zone unless being used by maintenance staff for critical maintenance communications or recording of defects.	All

A final site inspection has been conducted immediately before commencing work, and any new hazards and controls have been included.

Safe Work Instruction

Lookout Working Worksite Protection for Eveleigh Yard routine network maintenance activities



Worksite Protection Plan – Lookout Working

Signaller Details

Protection Officer Details

Workplace Supervisor details:

Type of work:

Worksite location

On

'All tracks' includes:

- Technology Park siding
- Eastern siding
- Arrival/Departure road
- Transfer road
- Western siding
- Old Fuel road
- Annexe road
- No 1 3801 Ltd road
- No 2 3801 Ltd road
- No 3 3801 Ltd road
- No 4 3801 Ltd road
- No 5 3801 Ltd road
- No 6 3801 Ltd road
- No 1 Xplorer road
- No 2 Xplorer road
- No 3 Xplorer road
- Xplorer extension road
- Extension road
- Gate road
- Eveleigh Intercity Road 5
- Eveleigh Intercity Road 6
- Eveleigh Intercity Road 7
- Eveleigh Intercity Road 8
- Eveleigh Intercity Road 9
- Eveleigh Intercity Road 10
- OSCAR Shed Road 1
- OSCAR Shed Road 2
- OSCAR Shed Road 3
- OSCAR Shed Road 4
- No 1 Engineering siding
- No 2 Engineering siding
- Turntable road
- Loco Release road
- No 1 Shunting Neck
- No 2 Shunting Neck

between and

Worksite assessment

The Lookout Working Prohibited Locations Register been consulted Yes

Warning method

Minimum Warning Time Calculations

Maximum track speed

Number of Lookouts used Position of Lookouts and

Number of additional Lookouts* used Position of Lookouts and

* Add an additional 5 seconds See Time if an additional Lookout is used

2 sec	+	5 sec	+	10 sec	= Minimum Warning Time (MWT)	17 sec	25 km/h	119 metres
sec	+	sec	+	10 sec		sec	km/h	metres
sec	+	sec	+	10 sec		sec	km/h	metres
sec	+	sec	+	10 sec		sec	km/h	metres
See Time (S)		Move Time (M)		Safe Time	(S+M+10 sec = MWT)	Track speed		Minimum Sighting Distance as calculated

Note – Additional MWT calculations can be recorded in the Protection Officer's Diary.

Where are the safe places identified for the Lookouts and the workers?

Lookouts:

Workers:

Ensure the workers have been briefed about these work details Yes

Diagrams, notes, and detailed instructions are over the next pages. These are to be read and followed as part of this worksite protection plan for Lookout Working.

Eveleigh Yard

Lookout Working Worksite Protection for Eveleigh Yard routine network maintenance activities

INSTRUCTIONS:

1. Workers sign in at the Eveleigh Yard security office via **Henderson Road**.
2. Travel along **Bogie Road** to reach the **Shunter's Office**.
3. Protection Officer informs the Yard Master of the use of Lookout Working and asks about rail traffic movements in the yard.
4. Place Lookouts to watch for rail traffic entry to where workers will be working.
5. Workers start work on the **Long Extension Road** until workers reach the Lookout.
6. Workers stop work and move to a safe place.
7. Reposition the Lookout to the designated locations.
8. Workers start work once Lookouts are in place.
9. Repeat steps 5 – 8 until work on the **all tracks in Eveleigh Yard** are complete.
10. Stop work and move workers to a safe place.
11. Recall Lookouts
12. Exit the worksite through the Eveleigh Yard security office access road via Bogie Road.
13. Protection Officer contacts the Yard Master to end Lookout Working and all workers sign out.

ADDITIONAL DETAILS

Obstruction to Minimum Sighting Distance

Stabled rail traffic may obstruct the Lookouts minimum sighting distance requirements. When this hazard is identified, workers must stop work and move to a safe place until the Protection Officer makes an assessment and repositions Lookouts to achieve the required Minimum Sighting Distance.

Multiple entry points

Tracks are to be treated as bidirectional. Lookouts are placed to watch for rail traffic approaching from both directions. Rail traffic movements on other tracks may also obstruct minimum sighting distance requirements. When this is identified, workers must stop work and move to a safe place until the Protection Officer makes an assessment and repositions Lookouts to achieve the required Minimum Sighting Distance.

WORKSITE

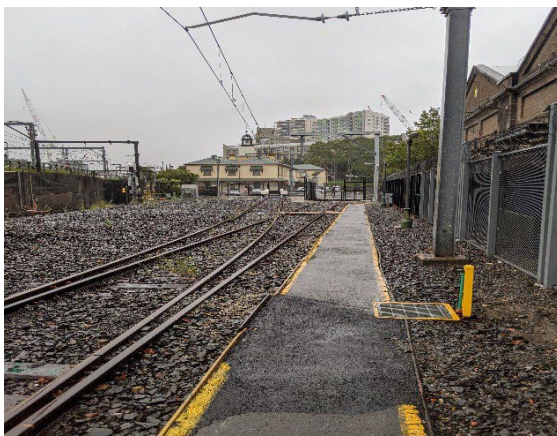


Image 1: View of Eastern Siding and Access Gate 100 2.064 U.



Image 2: View of Western Siding from SY 145 Signal.

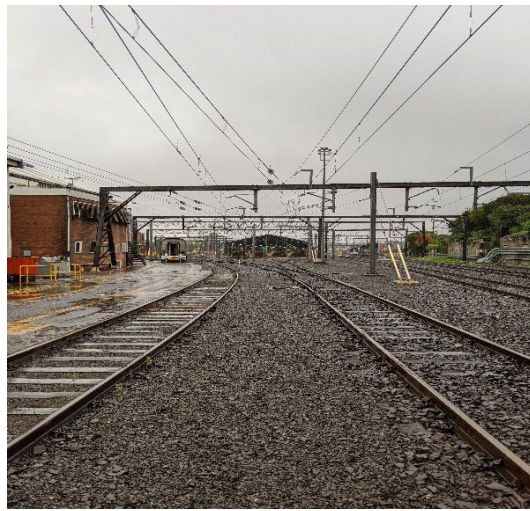


Image 3: View of worksite from SY 143 Signal.



Image 4: Worksite view from the Shunter's office.

SITE OFFICES



Image 5: Security office via Henderson Road.

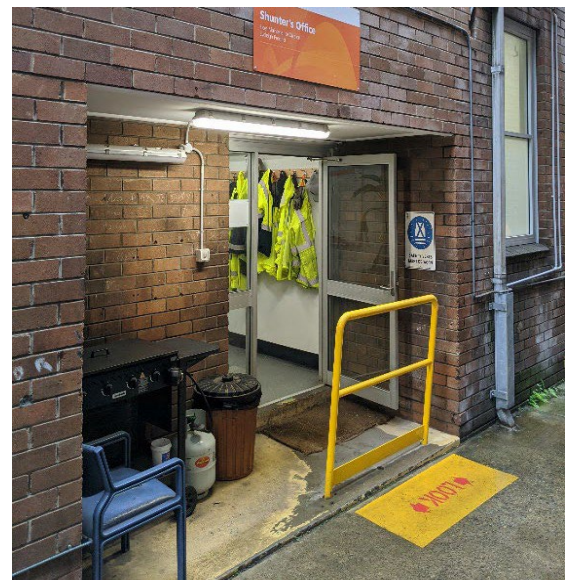


Image 6: Shunter's office

ACCESS / EGRESS

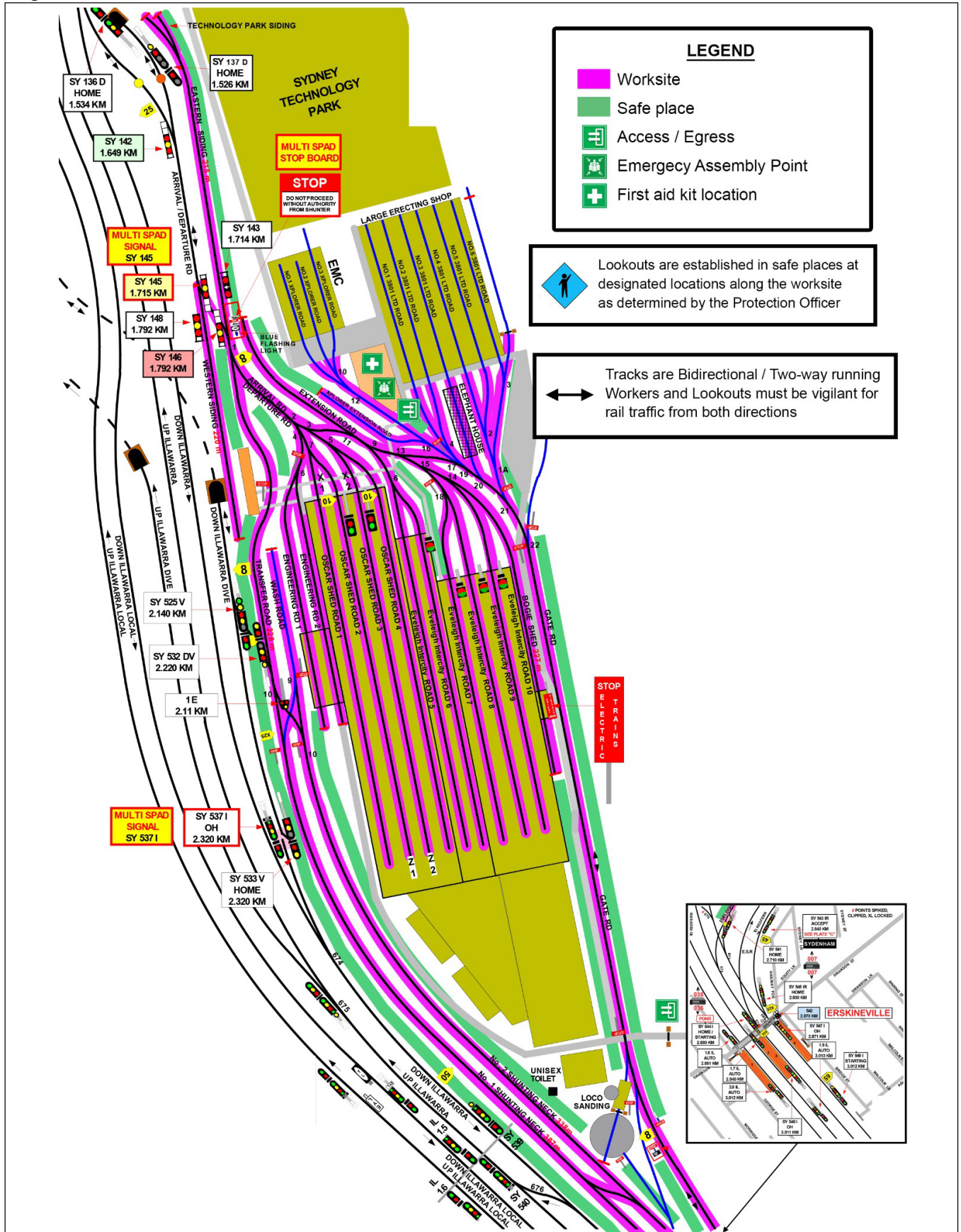


Image 11: Emergency Assembly Point at Bogie Road car park.



Image 12: Access point and vehicle parking.

Diagram



LEGEND

- Worksite
- Safe place
- Access / Egress
- Emergency Assembly Point
- First aid kit location

Lookouts are established in safe places at designated locations along the worksite as determined by the Protection Officer

Tracks are Bidirectional / Two-way running
Workers and Lookouts must be vigilant for rail traffic from both directions

