

TWA Worksite Protection for Hawkesbury River to Wondabyne Routine Network Maintenance Activities

WORK DESCRIPTION	Routine Network Maintenance Activities
WPP NUMBER	CC19D210001
SCOPE	<p>This SWI is applicable for the worksite protection arrangements using TWA for routine network maintenance performed by Central Coast Territory teams on the Up and Down Main Lines between 58.300 Km and 62.500 Km</p> <p>Work activities include:</p> <p>Track Inspections & Maintenance/Signals Inspections & Maintenance/OHW Inspections</p>
AUTHORISATIONS:	<p>Protection Officer: Protection Officer Level 3 or higher</p> <p>Handsignallers: Engineering Handsignaller Level 1 and Level 2.</p>
SAFETY CONTROLS – Track Work Authority (TWA) arrangements:	<p>For work on the Up & Down Main line, the worksite is protected by:</p> <ul style="list-style-type: none"> • Handsignaller level 1 must be placed at 65.500km on the Up Main line. • Handsignaller level 1 must be placed at 63.000km on the Up Main line. • Handsignaller level 2 must be placed at HR 155 DM Signal on the Down Main line. • Handsignaller level 2 must be placed at HR 157 UM Signal on the Up Main line. • 207 points, 208 Points and 210 points must be clipped and locked in the normal position. <p>When rail traffic enters the worksite limits from any direction all workers and equipment must stay clear of the Danger Zone until all rail traffic has passed the worksite limits and protection has been replaced.</p>
PRESTART REQUIREMENTS	<p>Protection Officer assessment checklist must be completed before instructions in this SWI are followed.</p> <p>Tools and equipment required:</p> <ul style="list-style-type: none"> • Protection Officer requires a phone to contact the Signaller. • Handsignaller Level 1 requires railway track signals, red flags/lights. • Handsignaller Level 2 requires railway track signals, red flags/lights. • Qualified Worker requires SL key & Point Clips for clipping & locking points
FURTHER INFORMATION	<p><i>NWT 300 Planning work in the Rail Corridor</i></p> <p><i>NWT 306 Track Work Authority</i></p> <p><i>NPR 702 Using a Track Work Authority</i></p> <p><i>NGE 202 Handsignals</i></p> <p><i>NPR 707 Clipping points</i></p> <p><i>NPR 709 Using railway track signals</i></p> <p><i>NPR 712 Protecting work from rail traffic on adjacent lines</i></p> <p><i>NGE 200 Walking in the Danger Zone</i></p> <p><i>NLA 310 Hornsby to Gosford</i></p>

UNCONTROLLED COPY WHEN PRINTED



Protection Officer assessment checklist		
Protection Officer's name:		Yes <i>(Tick if Yes)</i>
This document has not expired 12 months beyond the issue date.		
On-site safety assessment has been completed and additional hazards and controls recorded on the pre-work briefing (Page 3).		
SWI details and protection arrangements have been reviewed and validated for the assessed worksite location.		
Corridor Safety Number	Protection Officer Signature	Date

Warning:
If an above item does not apply, the Protection Officer must not use this Safe Work Instruction. A new worksite protection plan must be completed in accordance with NRF 014 Worksite Protection Pre-work briefing and NRF 015 Worksite Protection Plan.

UNCONTROLLED COPY WHEN PRINTED

Worksite Protection Pre-work Briefing

Briefing date: / /

Protection Officer details

name signature contact no.

Work location:

Scope of work:

Worksite protection: Refer to Worksite Protection Plan for details

Hazards (e.g. environment, plant, equipment, human error)	Controls (to be implemented to eliminate or reduce the risk to the lowest practicable level)	Person responsible for Control
Approaching rail traffic	TWA implemented.	Protection Officer
Adjacent live lines	Designated work and walk areas as per Protection Officer's instructions. All work is to stop and workers must move to a safe place when warned by Protection Officer.	Protection Officer
Multiple entry points into worksite	TWA implemented. Points clipped and locked.	Protection Officer
Access to / Egress from worksite	Protection Officer will assess and instruct when it is safe for workers to use NGE 200 Walking in the Danger Zone to move to the worksite or Safe Place.	All
Mobile phone distraction	Mobile phone usage is only allowed in the Danger Zone when required for work purposes. Other than being used for work purposes, mobile phones may be used only in a safe place after informing the Protection Officer.	All
Limited availability of safe places on bridges	On bridges, workers must be in a refuge before advising the PO of being in a safe place	All

A final site inspection has been conducted immediately before commencing work, and any new hazards and controls have been included.

UNCONTROLLED COPY WHEN PRINTED



Worksite Protection Plan – Track Work Authority

Protection Officer details

<input type="text" value="name"/>	<input type="text" value="signature"/>	<input type="text" value="contact no."/>
<input type="text" value="RSW or RIW no."/>	<input type="text" value="designation"/>	Planned duration <input type="text"/>

Workplace Supervisor details:

Type of work:

Worksite Location					
on the	<input type="text" value="Up Main"/>	between	<input type="text" value="HR 160 UM Signal"/>	and	<input type="text" value="39.2 Signal"/>
on the	<input type="text" value="Down Main"/>	between	<input type="text" value="HR 155 DM Signal"/>	and	<input type="text" value="39.5 Signal"/>

TWA worksite kilometre location

on the	<input type="text" value="Up Main line"/>	from	<input type="text" value="62.500km"/>	to	<input type="text" value="58.300km"/>
on the	<input type="text" value="Down Main line"/>	from	<input type="text" value="58.300km"/>	to	<input type="text" value="62.500km"/>

Signal protection

HR 155DM Sig	HR 157 UM Sig	Sig	Sig	Sig	Sig	Sig	Sig
--------------	---------------	-----	-----	-----	-----	-----	-----

Handsignaller details

1	<input type="text" value="name"/>	<input type="text" value="HR 155 DM Signal"/>	<input type="text" value="Sig/km"/>
2	<input type="text" value="name"/>	<input type="text" value="HR 157 UM Signal"/>	<input type="text" value="Sig/km"/>
3	<input type="text" value="name"/>	<input type="text" value="65.500 Km (Outer Handsignaller Up Main)"/>	<input type="text" value="Sig/km"/>
4	<input type="text" value="name"/>	<input type="text" value="63.000 Km (Inner Handsignaller Up Main)"/>	<input type="text" value="Sig/km"/>
5	<input type="text" value="name"/>	<input type="text"/>	<input type="text" value="Sig/km"/>
6	<input type="text" value="name"/>	<input type="text"/>	<input type="text" value="Sig/km"/>
7	<input type="text" value="name"/>	<input type="text"/>	<input type="text" value="Sig/km"/>
8	<input type="text" value="name"/>	<input type="text"/>	<input type="text" value="Sig/km"/>

Assurances (confirm the details provided by the Signaller)

The last rail traffic to pass the protection was The last known location of rail traffic is

Confirm that there is no approaching rail traffic between protection and worksite

Signaller Details

<input type="text" value="name"/>	<input type="text" value="Hornsby North Panel"/>	<input type="text" value="02 9701 1513"/>
-----------------------------------	--	---

Notes

Protection Officer's log, diagrams, notes and detailed instructions are over the next pages. These are to be read and followed as part of this worksite protection plan for Track Work Authority.

UNCONTROLLED COPY WHEN PRINTED



INSTRUCTIONS:

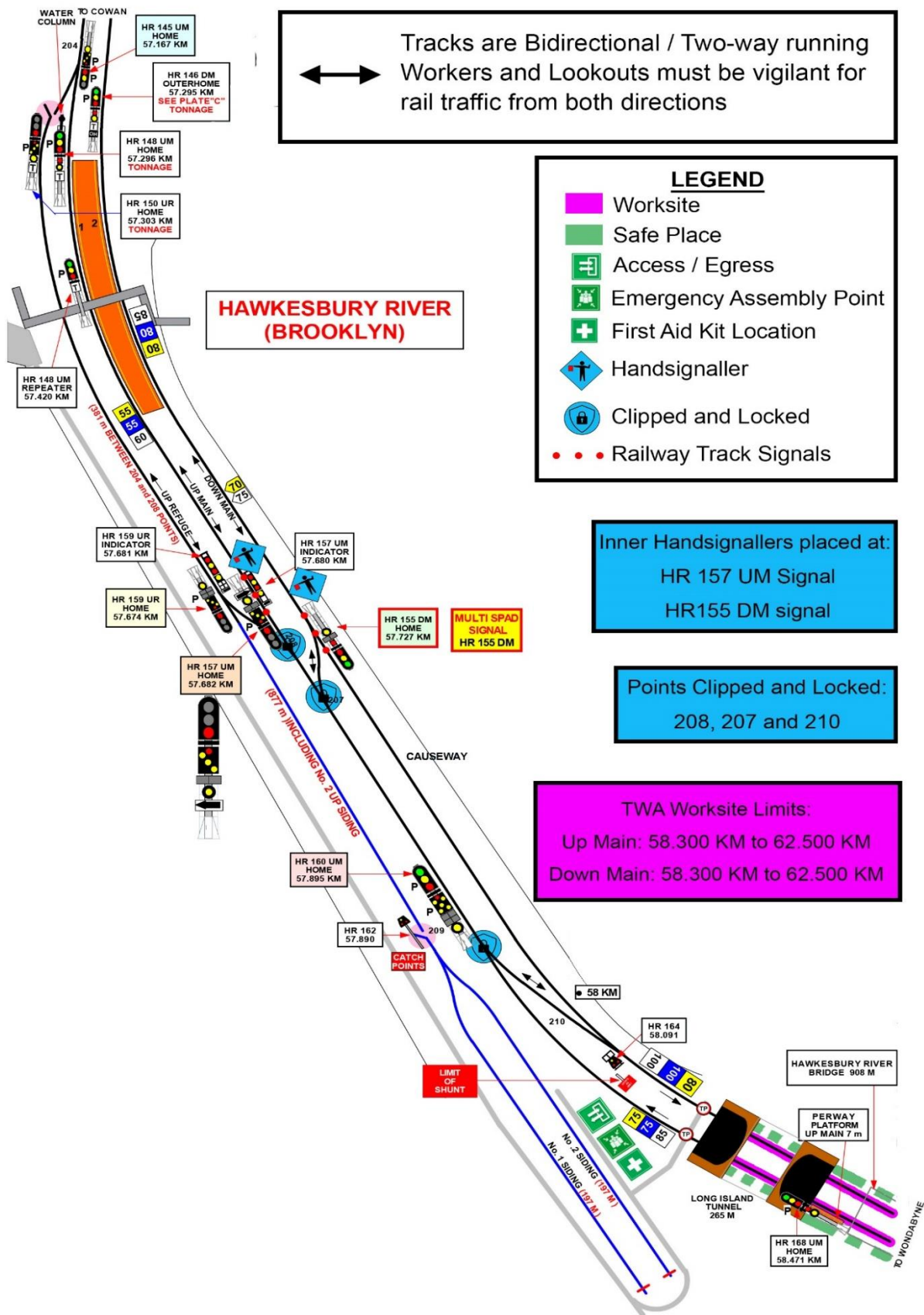
1. Workers enter the rail corridor
2. Protection Officer briefs workers about the worksite protection arrangements.
3. Arrange for Handsignaller ahead sign to be placed at Wondabyne Station Platform 1
4. Protection Officer places Handsignaller for the Up Main Line at:
 - **65.500 Km** (Outer Handsignaller)
 - **63.000 Km** (Inner Handsignaller)
 - **HR 157 UM Signal**
5. Protection Officer places Handsignaller for the Down Main Line at:
 - **HR 155 DM Signal**
6. Inner & Outer Handsignallers contact the Signaller at Hornsby North Panel to confirm effective communications with the Signaller.
7. Inner Handsignallers check effective communications with the Protection Officer and confirms to the Protection Officer that effective communication with the Signaller was established.
8. Protection Officer contacts the Signaller at Hornsby North Panel and requests a TWA.
9. After the TWA is authorised instruct Qualified Workers to:
 - o **Clip and lock 207, 208 & 210 points.**
10. Protection Officer confirms with Inner Handsignaller that protection has been placed.
11. Workers start work in the Danger Zone.
12. Workers move to safe place after work is complete.
13. Protection Officer instructs the Inner Handsignaller to remove protection if safe to do so and confirm once removed.
14. Workers egress worksite
15. Protection Officer contacts the Signaller at Hornsby North Panel to fulfil the TWA.

ADDITIONAL DETAILS

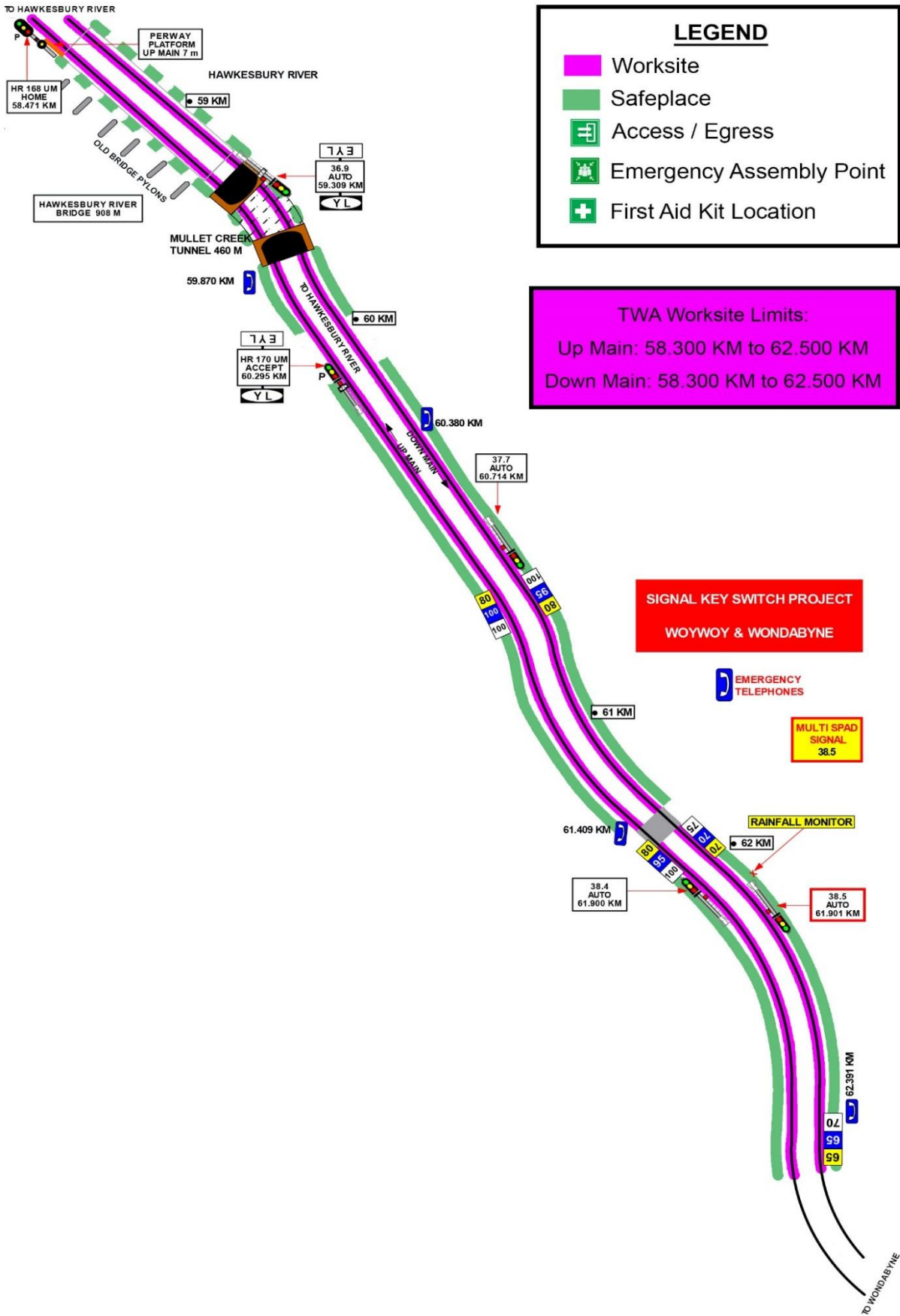
UNCONTROLLED COPY WHEN PRINTED



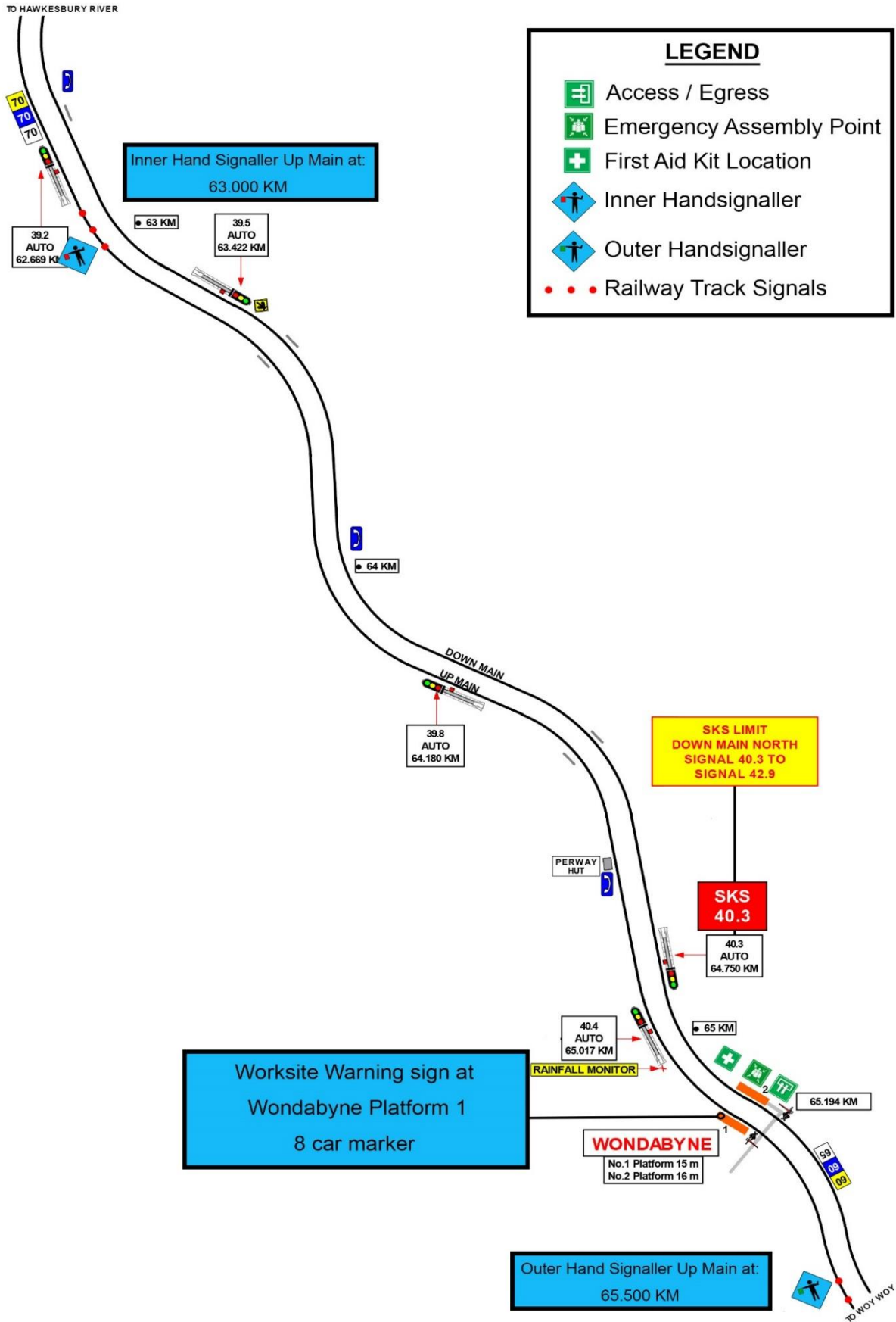
Diagram



UNCONTROLLED COPY WHEN PRINTED



UNCONTROLLED COPY WHEN PRINTED



UNCONTROLLED COPY WHEN PRINTED

