


Lookout Working Worksite Protection for Newcastle Interchange to Woodville Junction routine network maintenance activities

WORK DESCRIPTION	Routine Maintenance Activities
WPP NUMBER	CC9B10171
SCOPE:	<p>This SWI is applicable for the worksite protection arrangements using lookout working concerning routine network maintenance, defect management and repair of assets within the limits specified below and in the attached plan.</p> <p>Work activities include:</p> <ul style="list-style-type: none"> • Routine preventative and corrective work such as inspections and maintenance as appropriate for the type of protection being applied as part of this plan.
AUTHORISATIONS:	<p>Protection Officer: Protection Officer Level 1 or higher</p> <p>Lookout: Engineering Hand signaller Level 1 or higher or Protection Officer Level 1 or higher.</p>
SAFETY CONTROLS: Lookout working arrangements	<p>The nominated worksite location for Lookout Working includes the Up and Down Branch lines, Up Branch line (at Pacific Highway Overbridge), Up and Down Main lines (Sydney), No. 1 – 4 Down sidings, Perway siding, Up and Down Islington Loop</p> <p>The nominated worksite location for Lookout Working is a moving worksite, where workers are working along the track within the limits of the nominated worksite location up to the where the Lookout is established.</p> <p>As work moves along the track, the Protection Officer must assess the new location and:</p> <ul style="list-style-type: none"> • Establish and/or re-establish Lookouts as required to watch for approaching rail traffic from all entry points • Designate and instruct which safe places the workers are to use as the work is completed along the work route within the worksite limits.
PRESTART REQUIREMENTS:	<p>Protection Officer assessment checklist must be completed before instructions in this SWI are followed.</p> <p>Tools and equipment required:</p> <ul style="list-style-type: none"> • Protection Officer requires a phone to contact the Signaller. • Lookouts require a high-visibility arm sleeve and a whistle/horn.
FURTHER INFORMATION:	<p><i>NWT 300 Planning work in the Rail Corridor</i></p> <p><i>NWT 310 Lookout Working</i></p> <p><i>NPR 711 Using Lookouts</i></p> <p><i>NPR 751 Calculating Minimum Warning Time</i></p> <p><i>NPR 712 Protecting work from rail traffic on adjacent lines</i></p> <p><i>NGE 200 Walking in the Danger Zone</i></p> <p><i>NLA 320 Broadmeadow - Newcastle Interchange</i></p> <p><i>Lookout Working Prohibited Locations Register</i></p>

UNCONTROLLED COPY WHEN PRINTED



Protection Officer assessment checklist		
Protection Officer's name:		Yes <i>(Tick if Yes)</i>
This document has not expired 12 months beyond the issue date.		
SWI details and protection arrangements have been reviewed and validated for the assessed worksite location, including: <ul style="list-style-type: none"> • On-site safety assessment has been completed for relevancy of works being undertaken • The required protection details, environment and tasks are unchanged from the details of this SWI 		
The Protection Officer and Qualified Workers deploying qualifications are current and have practiced in the last 6 months. If not practiced, then a Rail Safety Coach must be contacted for guidance.		
Corridor Safety Number	Protection Officer Signature	Date

 **Warning:** *If an above item does not apply, the Protection Officer must not use this Safe Work Instruction. A new worksite protection plan must be completed in accordance with NRF 014 Worksite Protection Pre-work briefing and NRF 015 Worksite Protection Plan.*

UNCONTROLLED COPY WHEN PRINTED

Worksite Protection Pre-work Briefing

Briefing date:

Protection Officer details

Work location:

Scope of work:

Worksite protection: Refer to Worksite Protection Plan for details

Hazards <small>(e.g. environment, plant, equipment, human error)</small>	Controls <small>(to be implemented to eliminate or reduce the risk to the lowest practicable level)</small>	Person responsible for Control
Approaching rail traffic	<ul style="list-style-type: none"> Lookouts must be trained and competent to perform lookout duties. Lookouts must be rotated if performing lookout for extended periods of time. Workers to remain within worksite limits as set out in this procedure. Lookouts must be placed as per protection plan on page 8. Workers are to stop work and move to a safe place immediately on being warned by the lookouts 	Protection Officer and Lookout
Live adjacent lines	<ul style="list-style-type: none"> Lookouts must provide warning to workers when rail traffic is approaching from the adjacent line in either direction. 	Protection Officer and Lookout
Two - way running / multiple entry points into worksite	<ul style="list-style-type: none"> One Lookout placed watching each direction before work starts. Lookouts are to warn workers of approaching rail traffic, including rail traffic entering or travelling within the worksite. Workers are to stop work and move to a safe place. 	Protection Officer and Lookout
Obstruction to Minimum Sighting Distance	<ul style="list-style-type: none"> Lookouts must provide warning to the workers whenever their line of sight is obstructed by passing rail traffic. Workers must stop work and move to a safe place and reassess positioning and method 	Protection Officer and Lookout
Adjoining/Surrounding Worksites	<ul style="list-style-type: none"> Lookouts must have two independent audible warning devices that can be heard by workers over any noise generated by adjoining/surrounding worksites. Lookouts are to provide warning if their line of sight is obstructed by adjoining/surrounding worksites. 	Protection Officer and Lookout
Access to / Egress from worksite	<ul style="list-style-type: none"> Access and egress points must be agreed prior to entering the danger zone, consideration should be given to ease of access and safest possible entry and exit points. 	All
Slips, trips, falls and hazards carrying equipment	<ul style="list-style-type: none"> Protection Officer will assess and instruct when it is safe for workers to use NGE 200 Walking in the Danger Zone to move to the worksite or safe place. 	All
Mobile phone	<ul style="list-style-type: none"> Mobile phones use is not permitted in the danger zone unless being used by maintenance staff for critical maintenance communications or recording of defects. 	All

A final site inspection has been conducted immediately before commencing work, and any new hazards and controls have been included.

UNCONTROLLED COPY WHEN PRINTED



Worksite Protection Plan – Lookout Working

Signaller details

<input type="text" value="name"/>	<input type="text" value="Newcastle Signal Box"/>	<input type="text" value="02 4923 0990"/>
-----------------------------------	---	---

Protection Officer details

<input type="text" value="name"/>	<input type="text" value="signature"/>	<input type="text" value="contact no."/>
<input type="text" value="RSW or RIW No."/>	<input type="text" value="designation"/>	Planned duration <input type="text"/>

Workplace Supervisor details:

Type of work:

Worksite location

On the	<input type="text" value="Up and Down Branch lines"/>		<input type="text" value="Up and Down Main lines (Hunter)"/>
	<input type="text" value="Up Branch line (at Pacific Highway Overbridge)"/>		<input type="text" value="Up and Down Main lines (Sydney)"/>
	<input type="text" value="No. 1 - 4 sidings"/>		<input type="text" value="Perway siding"/>
	<input type="text" value="Up and Down Islington Loop"/>		
between	<input type="text" value="WJ 13 Signal"/>	and	<input type="text" value="End of Terminal Line"/>
	<input type="text" value="IJ 21 Signal (Up & Dn Main Line/Hunter)"/>		<input type="text" value="End of Terminal Line"/>

Worksite assessment

The Lookout Working Prohibited Locations Register been consulted Yes

Warning method

<input type="text" value="Horn"/>	<input type="text" value="Whistle"/>	<input type="text" value="Voice"/>
-----------------------------------	--------------------------------------	------------------------------------

Minimum Warning Time Calculations

Maximum track speed	<input type="text" value="80 km/h"/>			
Number of Lookouts used	<input type="text" value="1"/>	Position of Lookouts	<input type="text" value="163.688 km"/>	to <input type="text" value="165.517 km"/>
Number of additional Lookouts* used	<input type="text" value="-"/>	Position of Lookouts	<input type="text" value="-"/>	to <input type="text" value="-"/>

* Add an additional 5 seconds See Time if an additional Lookout is used

Note - Lookouts are relocated to positions within these KMs as workers move along the worksite.

<input type="text" value="2 sec"/>	+	<input type="text" value="3 sec"/>	+	<input type="text" value="10 sec"/>	= Minimum Warning Time (MWT)	<input type="text" value="15 sec"/>	<input type="text" value="60 km/h"/>	<input type="text" value="250 metres"/>
<input type="text" value="2 sec"/>	+	<input type="text" value="10 sec"/>	+	<input type="text" value="10 sec"/>		<input type="text" value="22 sec"/>	<input type="text" value="60 km/h"/>	<input type="text" value="367 metres"/>
<input type="text" value="2 sec"/>	+	<input type="text" value="3 sec"/>	+	<input type="text" value="10 sec"/>		<input type="text" value="15 sec"/>	<input type="text" value="80 km/h"/>	<input type="text" value="334 metres"/>
<input type="text" value="2 sec"/>	+	<input type="text" value="3 sec"/>	+	<input type="text" value="10 sec"/>		<input type="text" value="15 sec"/>	<input type="text" value="13 km/h"/>	<input type="text" value="55 metres"/>
<input type="text" value="2 Sec"/>	+	<input type="text" value="3 Sec"/>	+	<input type="text" value="10 Sec"/>		<input type="text" value="15 Sec"/>	<input type="text" value="25 km/h"/>	<input type="text" value="105 metres"/>
<i>See Time (S)</i>		<i>Move Time (M)</i>		<i>Safe Time</i>	<i>(S+M+10 sec = MWT)</i>	<i>Track speed</i>	<i>Minimum Sighting Distance as calculated</i>	

Note – Additional MWT calculations can be recorded in the Protection Officer’s Diary.

Where are the safe places identified for the Lookouts and the workers?

Lookouts:

UNCONTROLLED COPY WHEN PRINTED



Workers: Cess and 6 foot

Ensure the workers have been briefed about these work details Yes

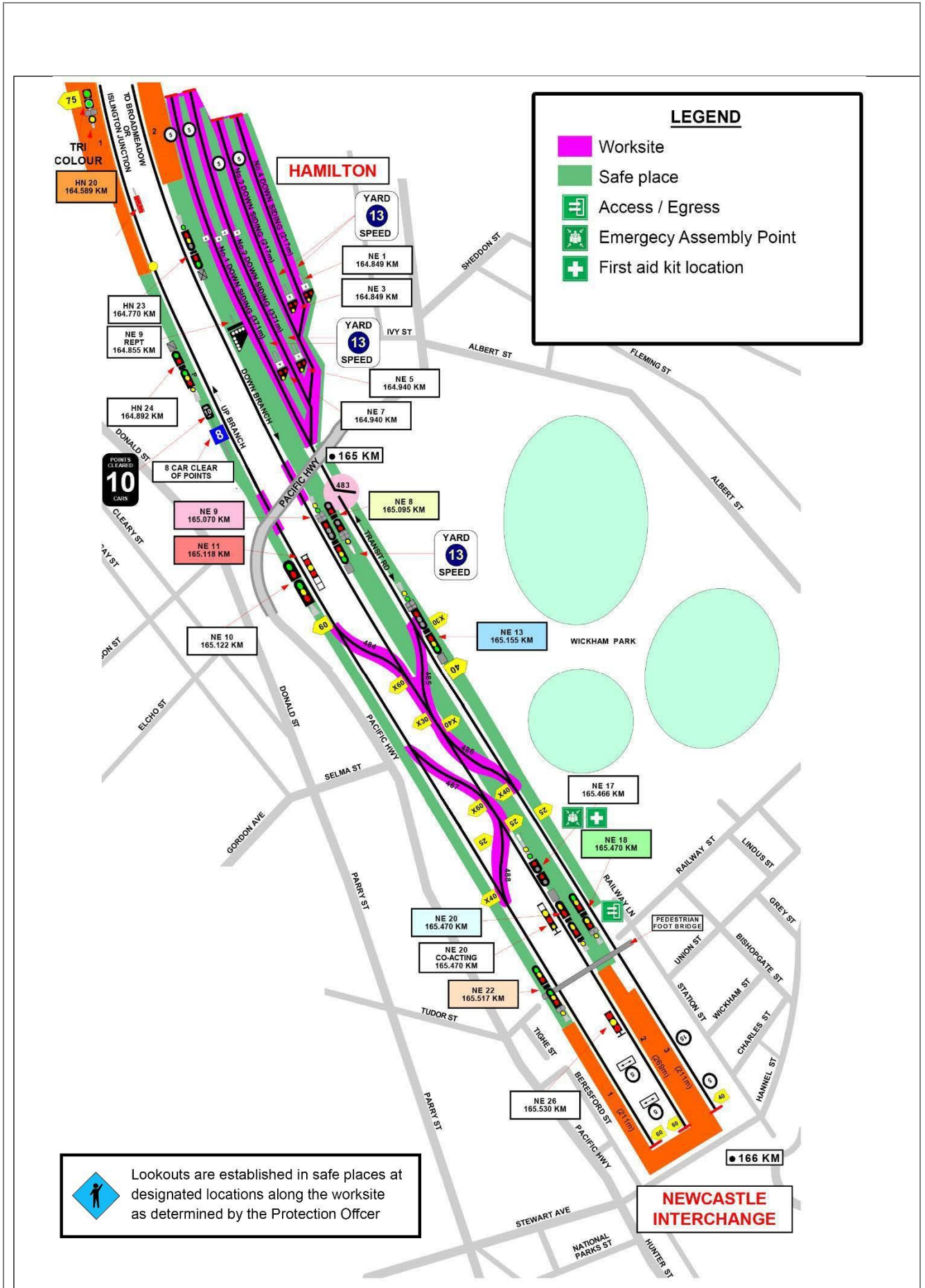
Diagrams, notes, and detailed instructions are over the next pages. These are to be read and followed as part of this worksite protection plan for Lookout Working.

INSTRUCTIONS:	<ul style="list-style-type: none"> Workers enter the rail corridor via gate N33 165.342 D on Railway Lane, Wickham. Protection Officer briefs workers about the worksite protection arrangements. Protection Officer contacts Newcastle Signal Box and tells the Signaller about the use of Lookout Working at Newcastle Interchange to Woodville Junction on the Up & Down Main, Up & Down Branch, No. 1-4 Sidings, Perway Siding, Up & Down Islington Loop. Workers Remain in Down Main Safe Place until Protection Officer Informs Lookouts are in place. Establish Lookouts at designated locations. Workers start work up to designated locations. Workers move to safe place. Re-establish Lookouts at next designated location. Repeat steps 6-8 until work is complete. Workers move to a safe place. Recall lookouts. Workers egress the worksite via N35 164.737 U on Coal St, Hamilton. Protection Officer contacts Newcastle Signal Box to end Lookout Working.
ADDITIONAL DETAILS	<p><u>Obstruction to Minimum Sighting Distance</u> Stabled rail traffic on any tracks and conditions on the day may obstruct minimum sighting distance. When this hazard is identified, workers must stop work and move to a safe place until the Protection Officer makes an assessment and relocates lookouts to achieve the required minimum sighting distance.</p> <p><u>Adverse weather conditions</u> Weather conditions on the day may impede sighting distance. Protection Officers must ensure the required Minimum Sighting Distance is attainable by reassessing positions of lookouts.</p>
Lookouts	<p>Lookout positions are reassessed throughout the worksite to achieve Minimum Sighting Distance.</p>
ACCESS / EGRESS	<p align="center">Access through Gate: N33 165.342 D on Railway Lane, Wickham (Newcastle Interchange)</p> <p align="center">Egress through Gate: N35 164.737 U on Coal St, Hamilton (Woodville Junction)</p>

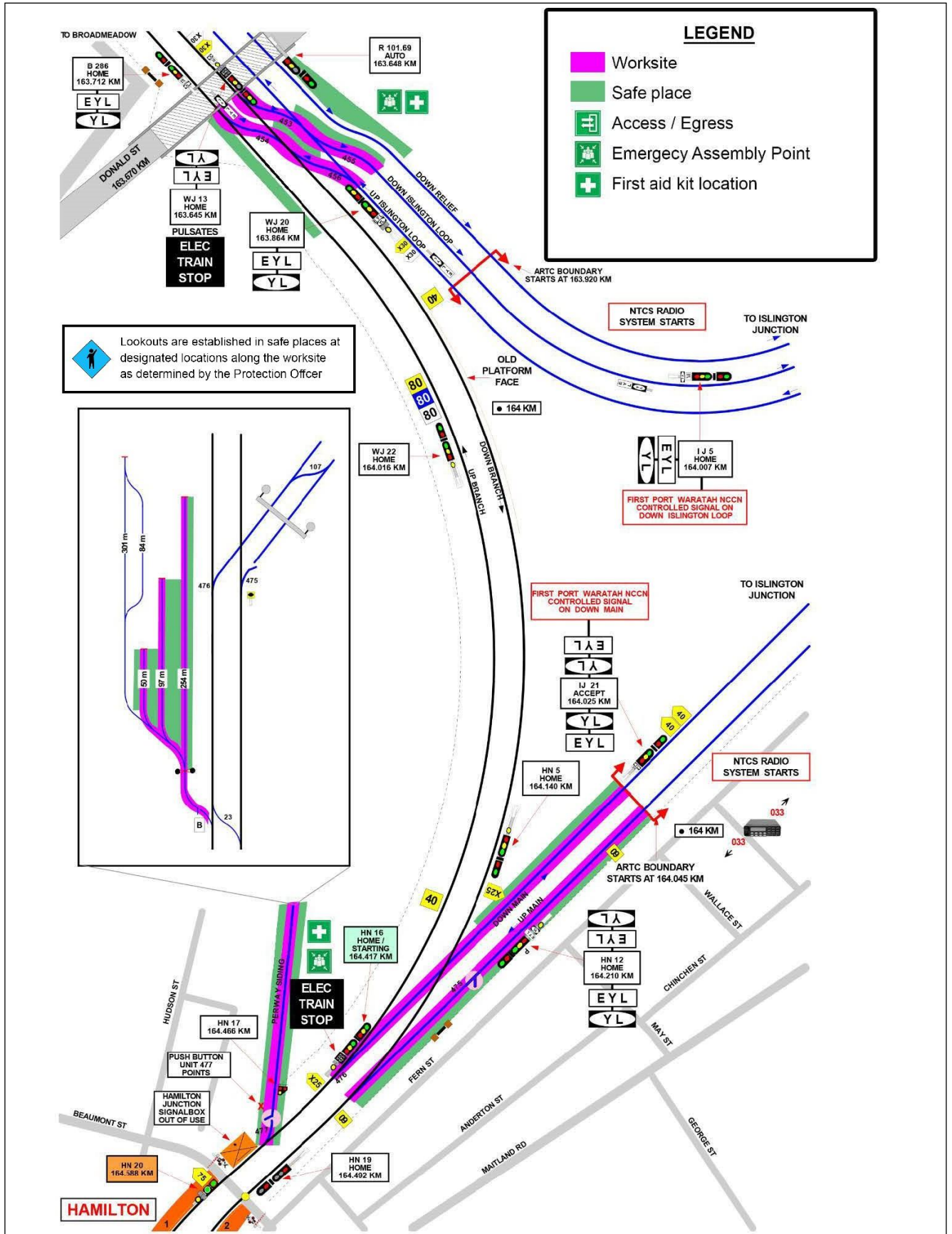
UNCONTROLLED COPY WHEN PRINTED

Diagram

UNCONTROLLED COPY WHEN PRINTED



UNCONTROLLED COPY WHEN PRINTED



UNCONTROLLED COPY WHEN PRINTED

