

Worksite Protection Planning Diagrams

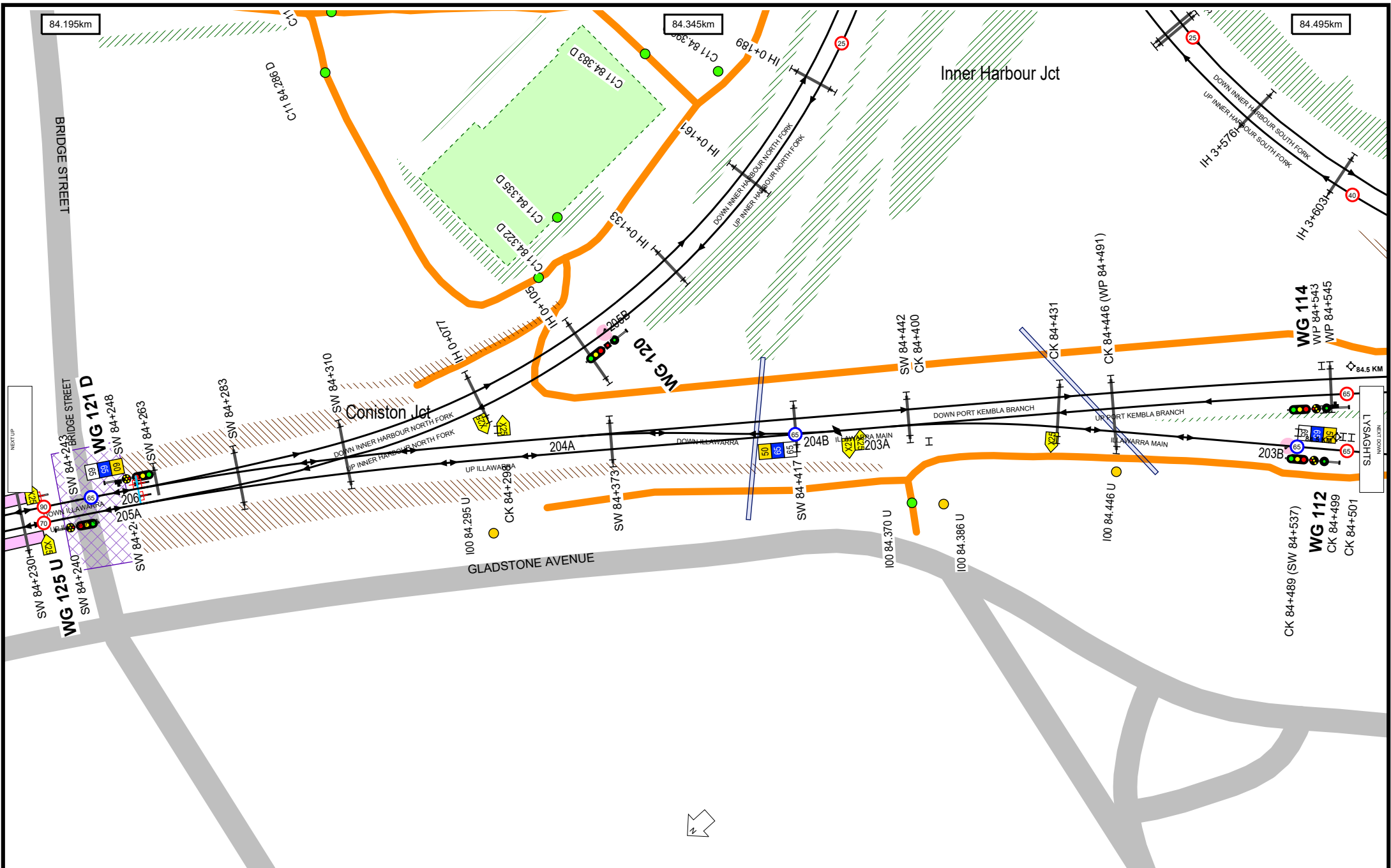
South Coast Line - Coniston Jct to Port Kembla including Unanderra North Jct - I10

Stations Covered

CONISTON	2
LYSAGHTS	6
CRINGILA	10
PORT KEMBLA NORTH	12
PORT KEMBLA	17

Kilometrage References

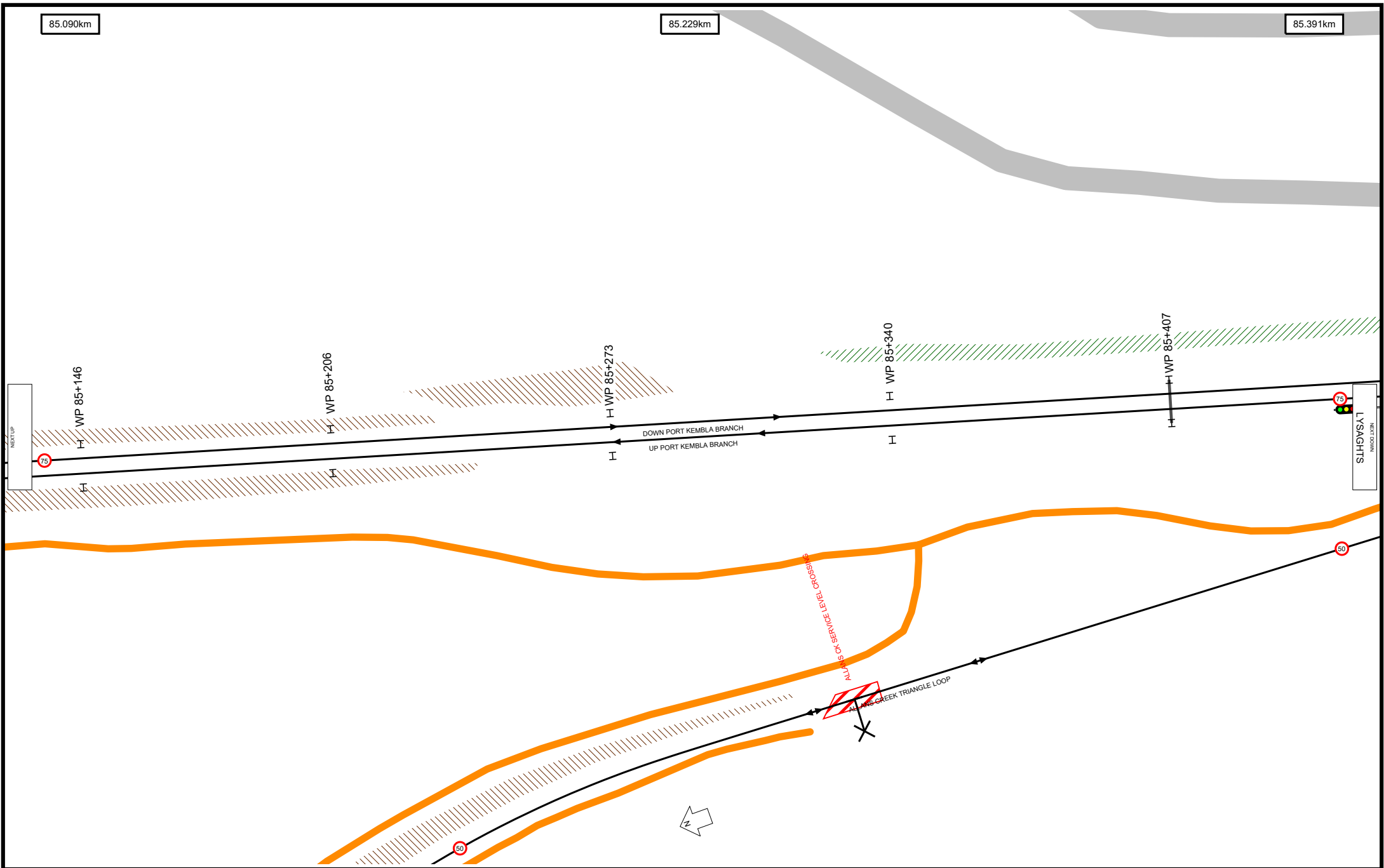
84.195km	2
85.000km	3
90.000km	13
85.524km	5

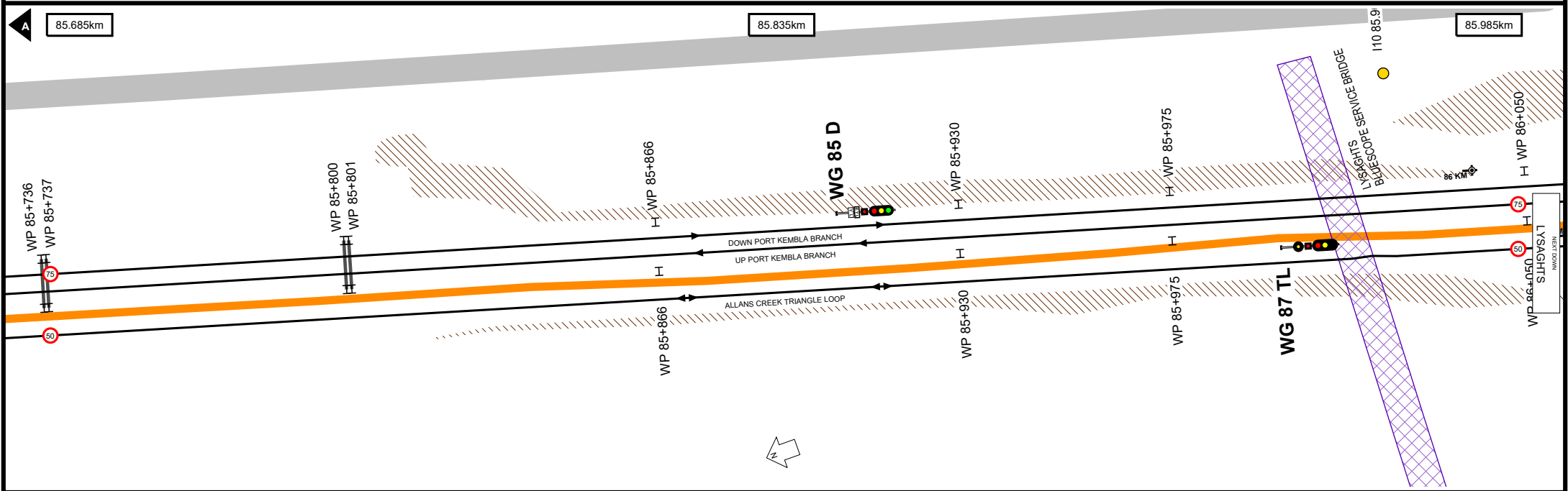
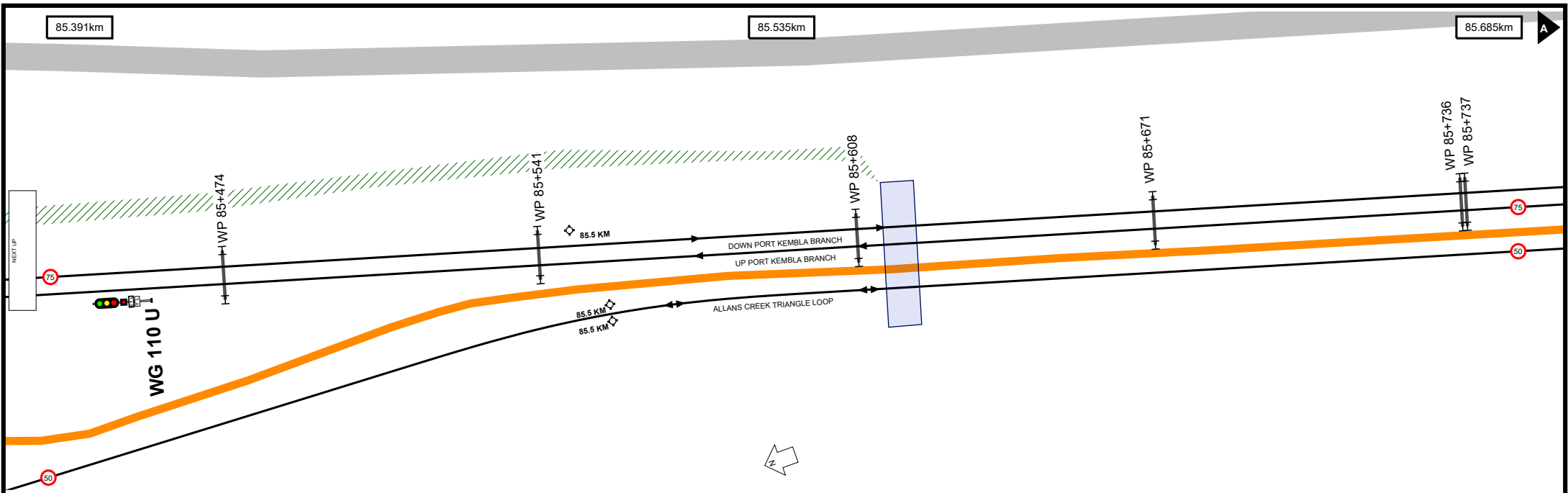


85.090km

85.229km

85.391km

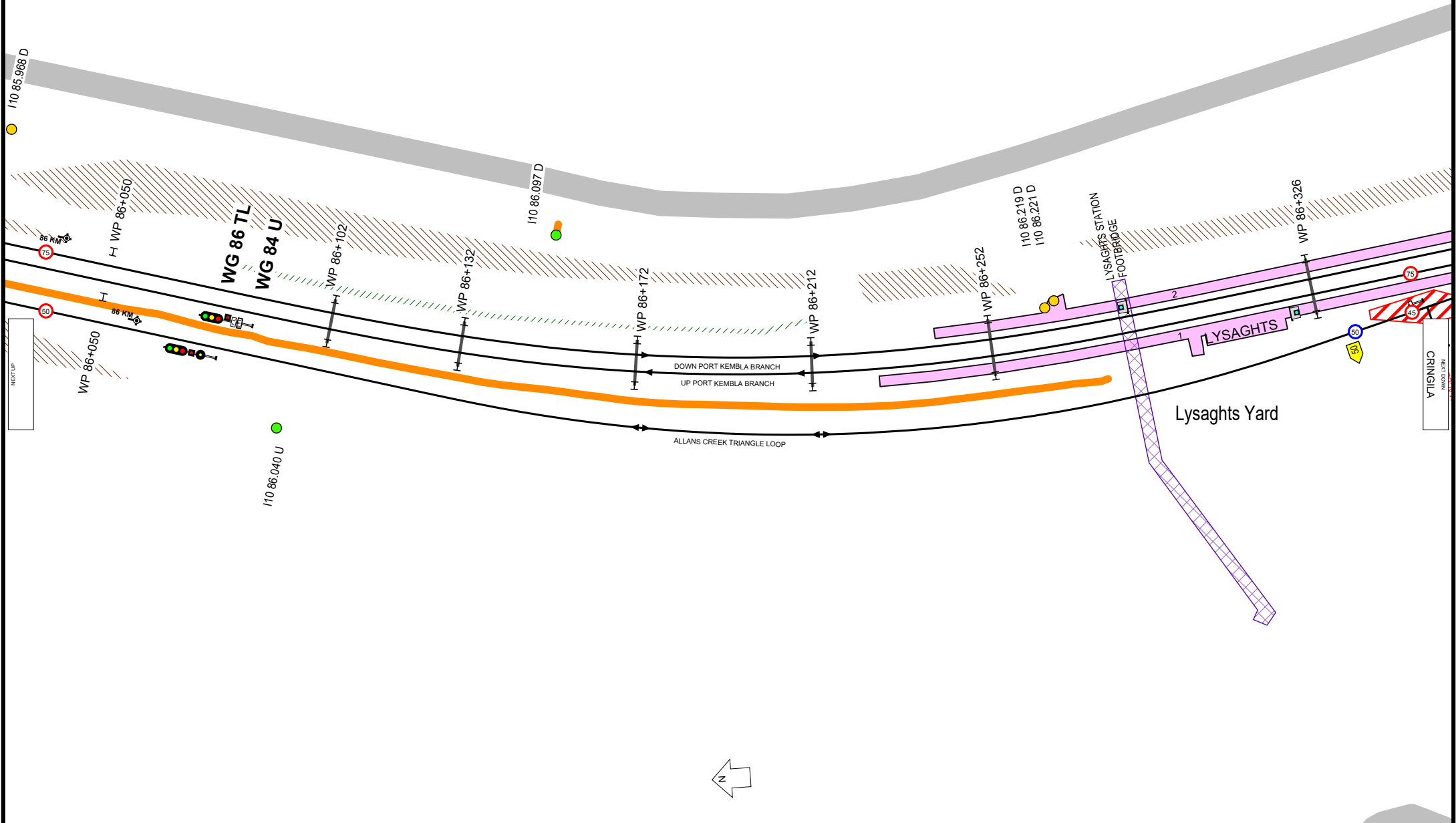


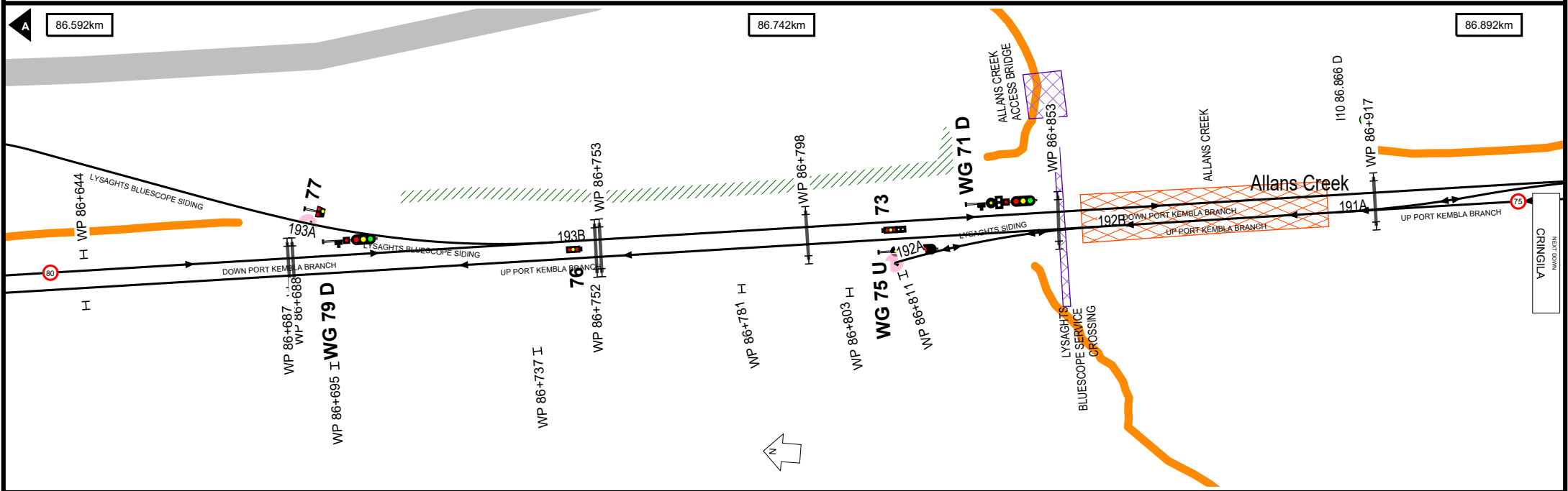
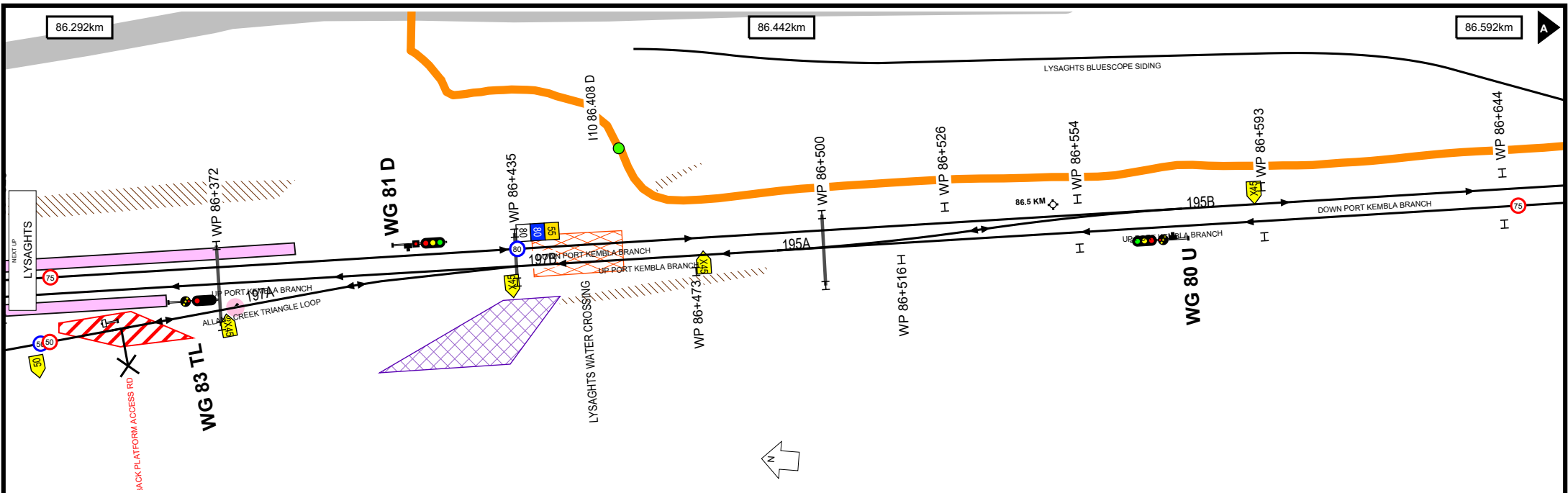


85.985km

86.137km

86.292km

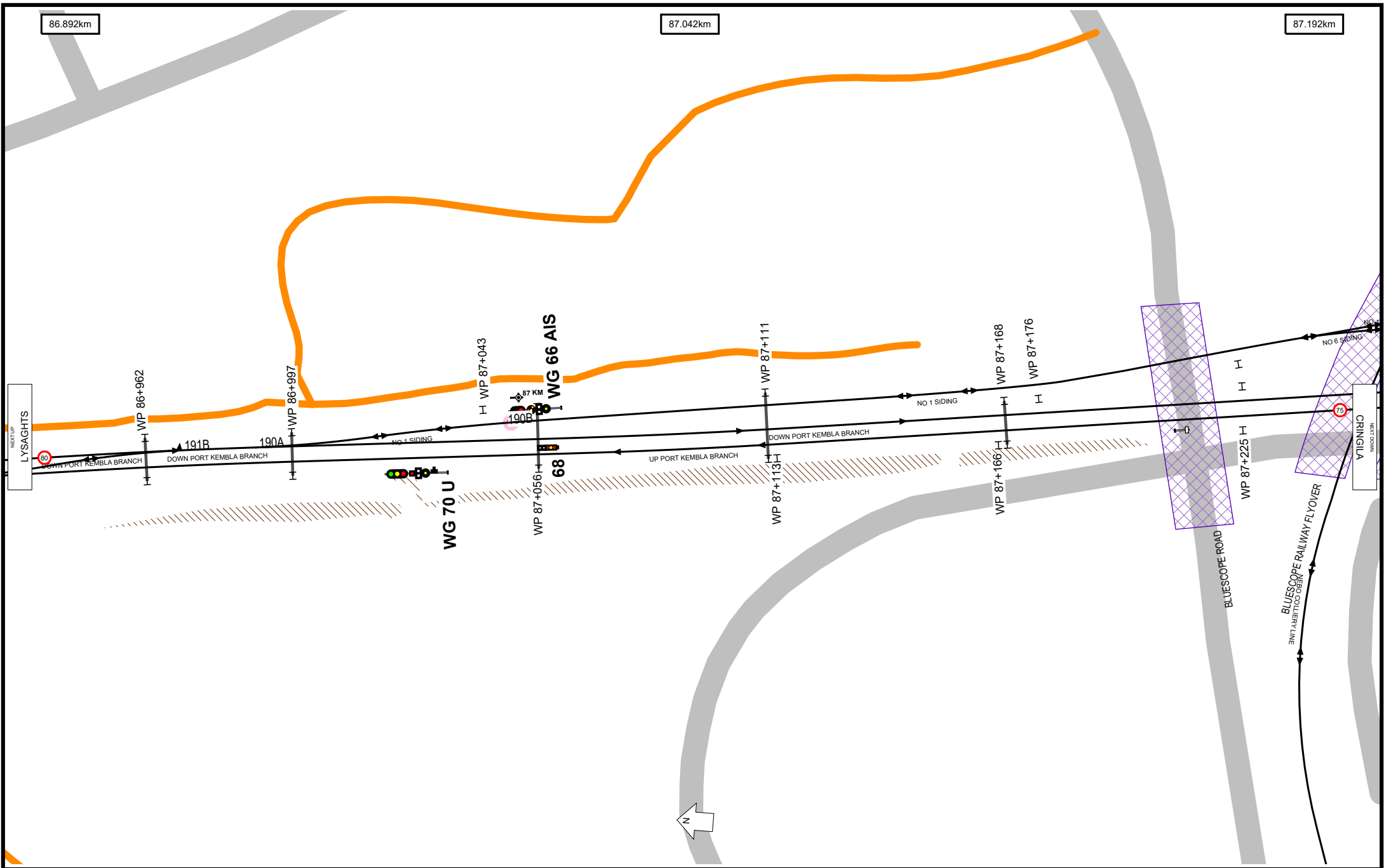




86.892km

87.042km

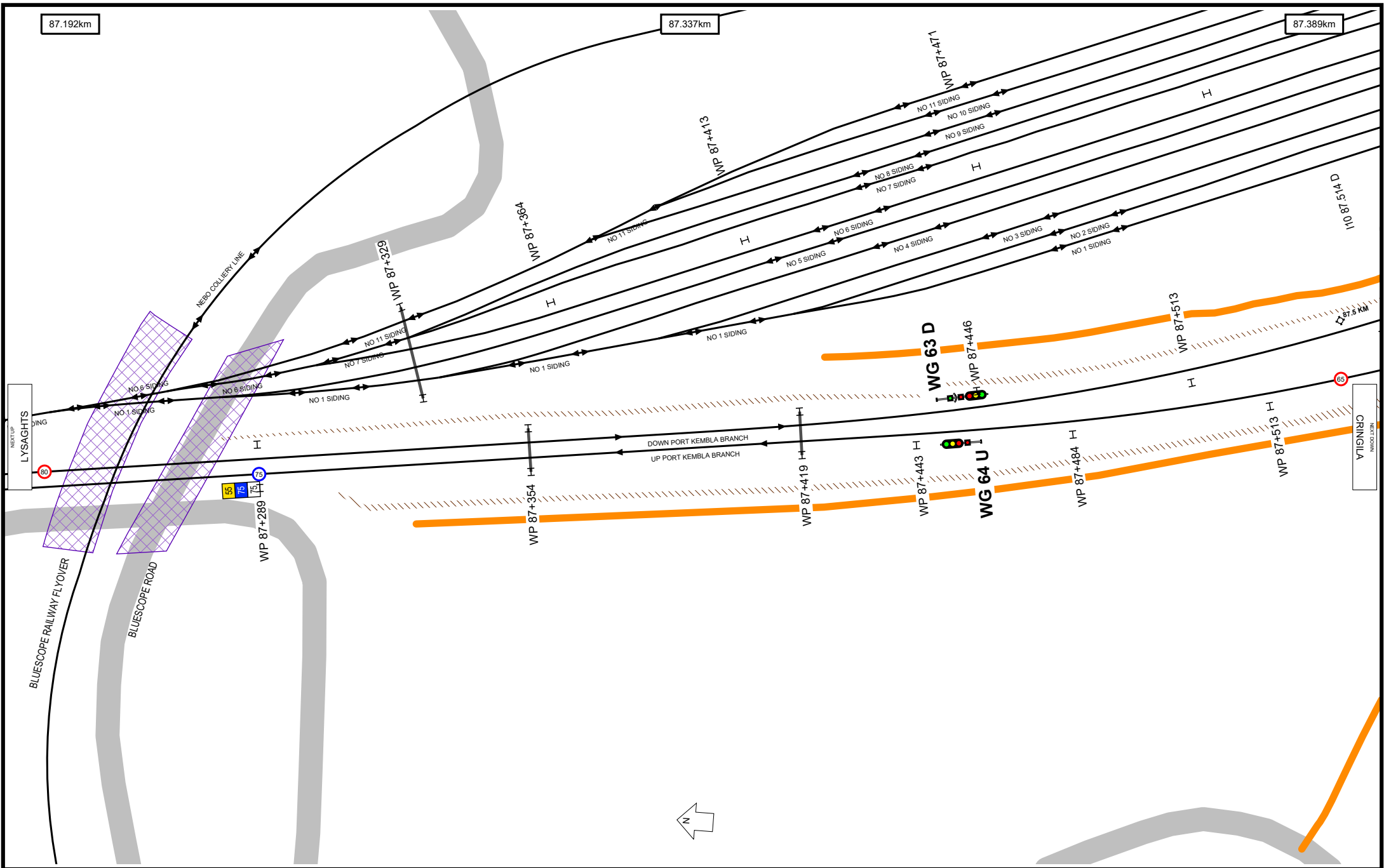
87.192km

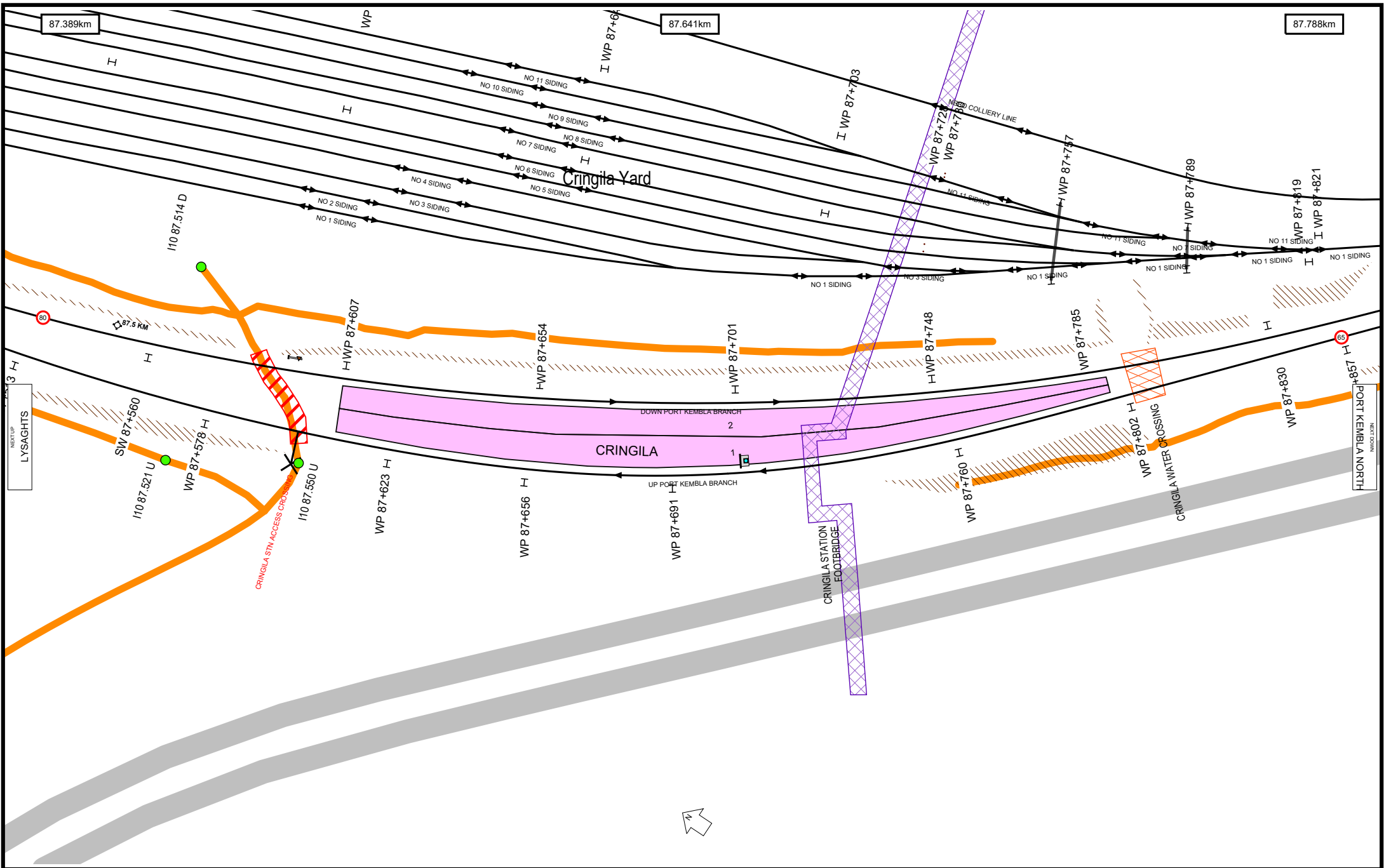


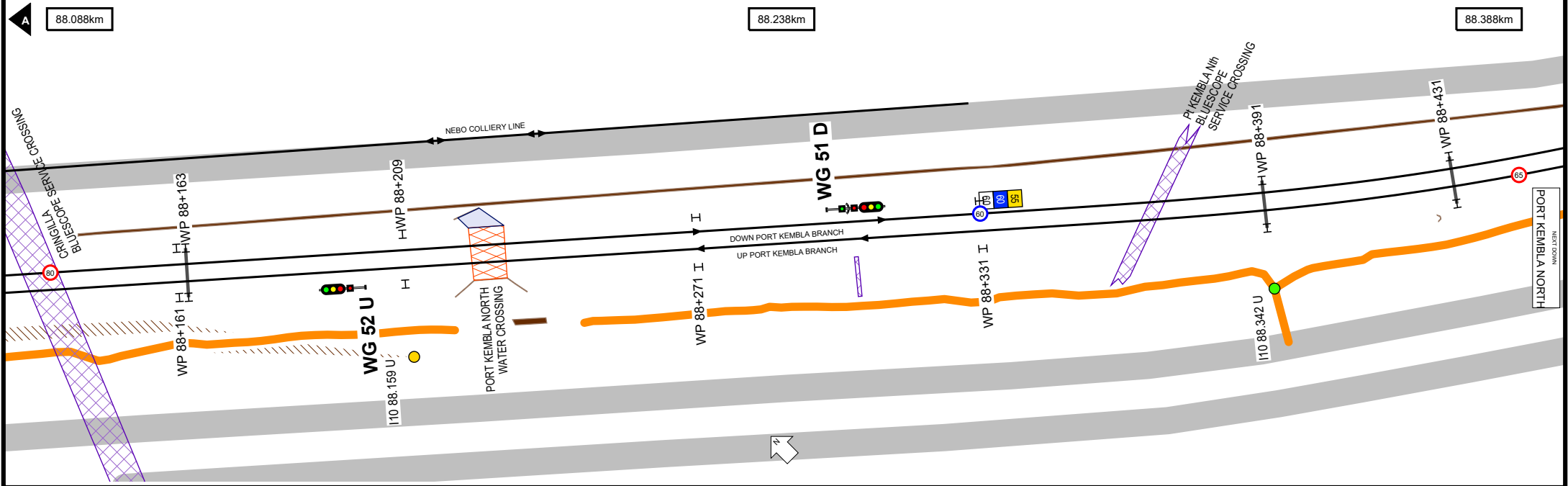
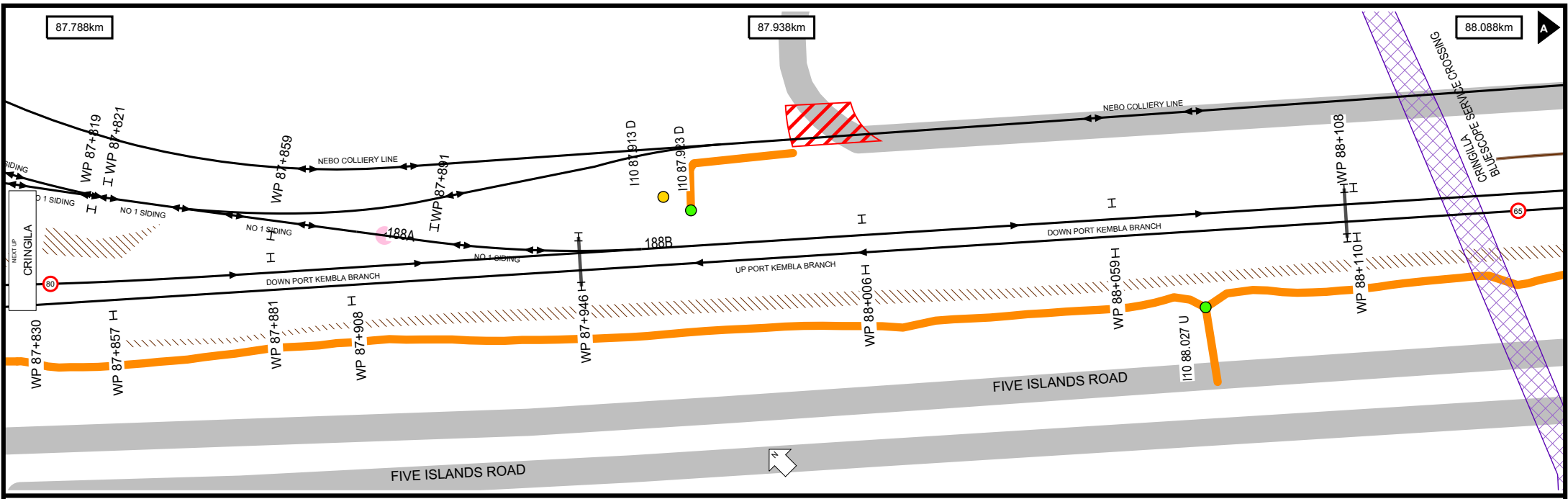
87.192km

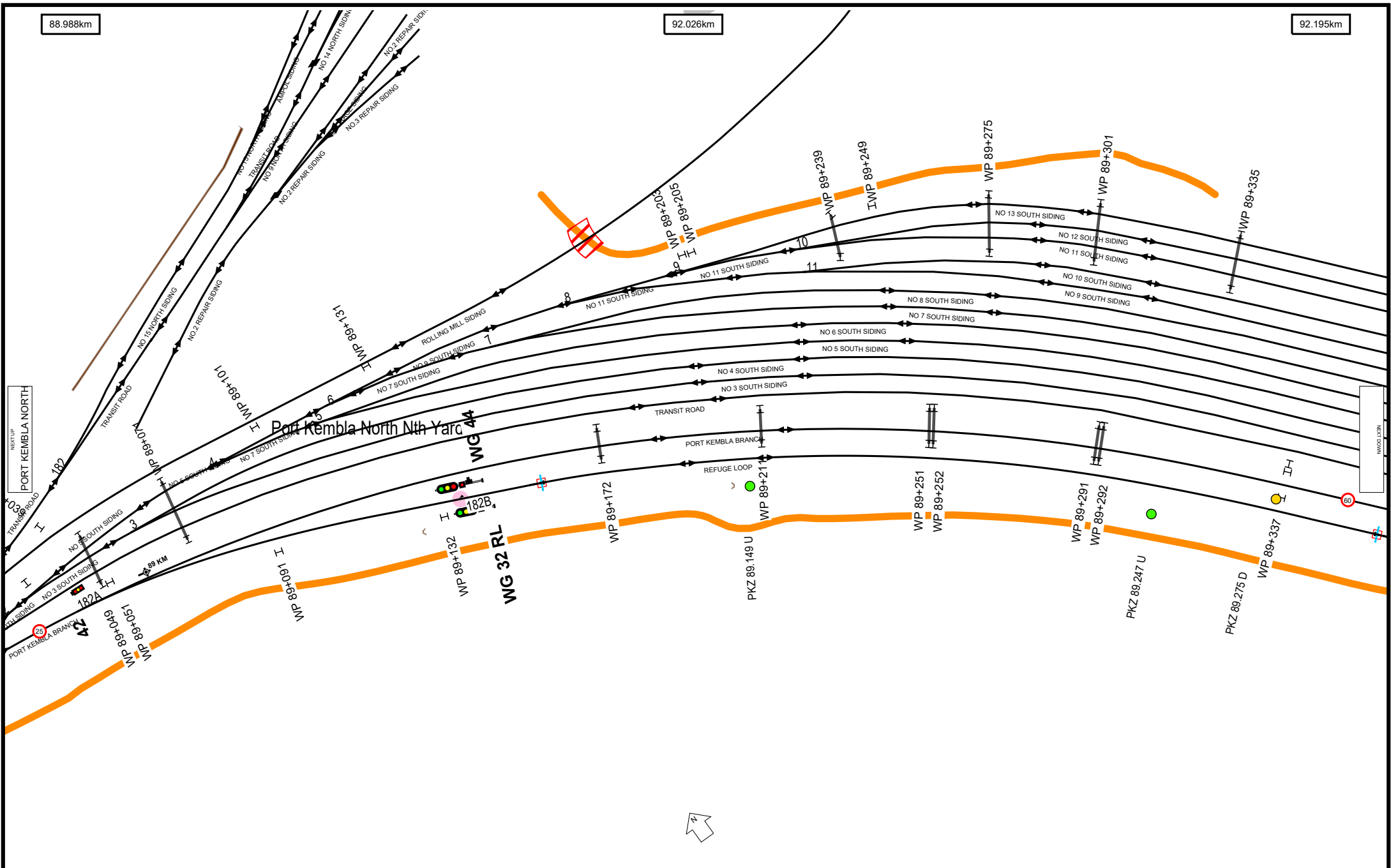
87.337km

87.389km









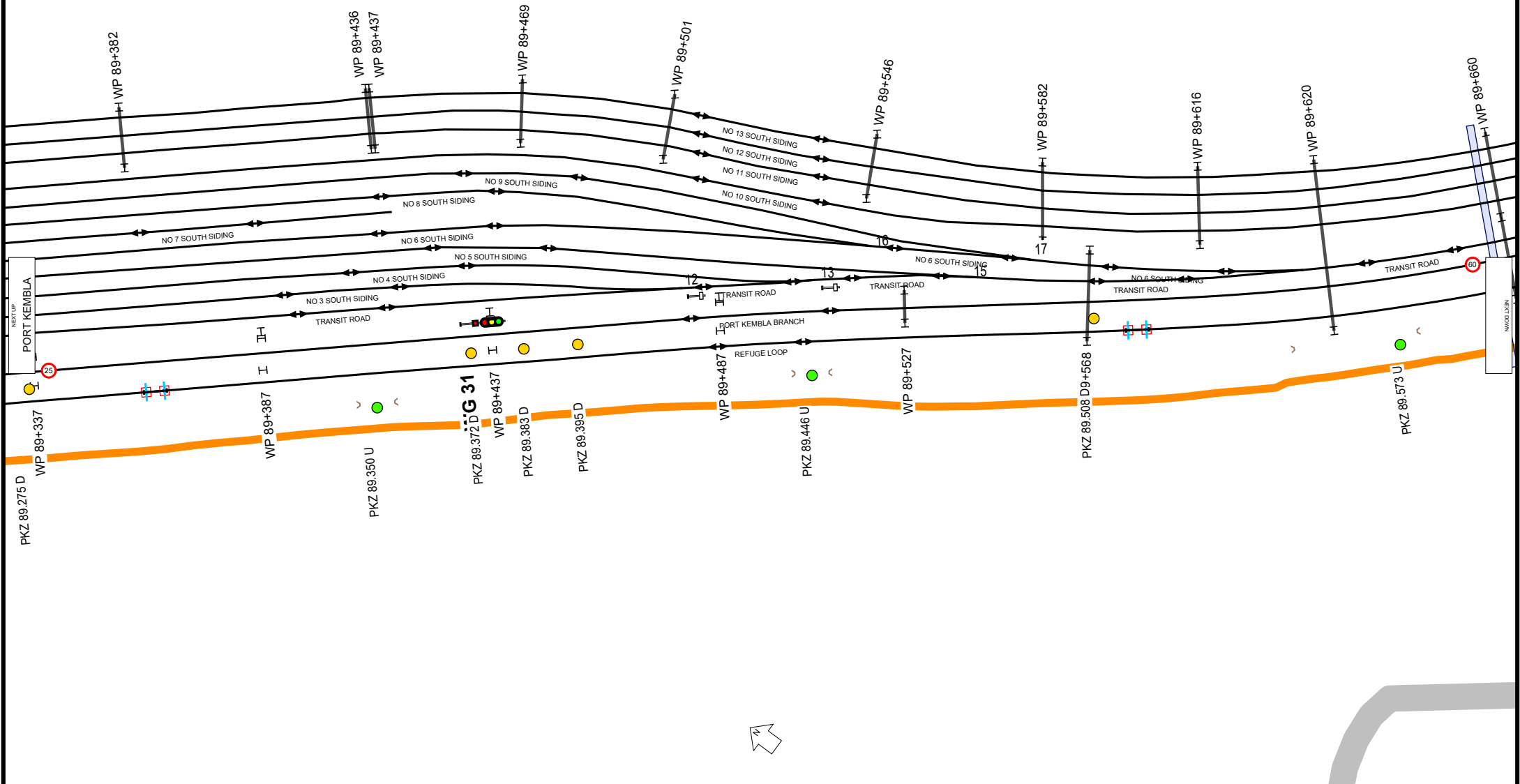
88.988km

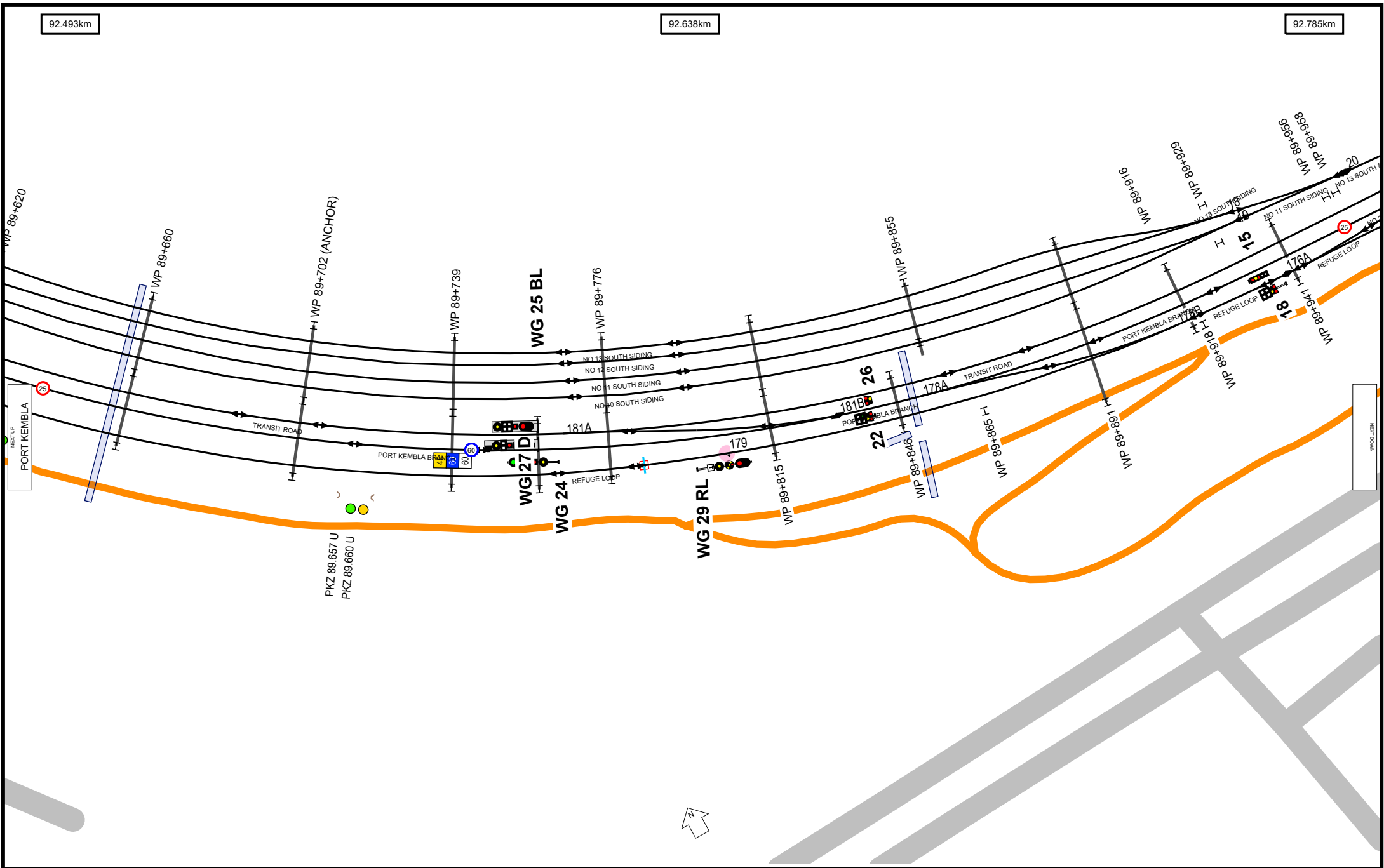
92.026km

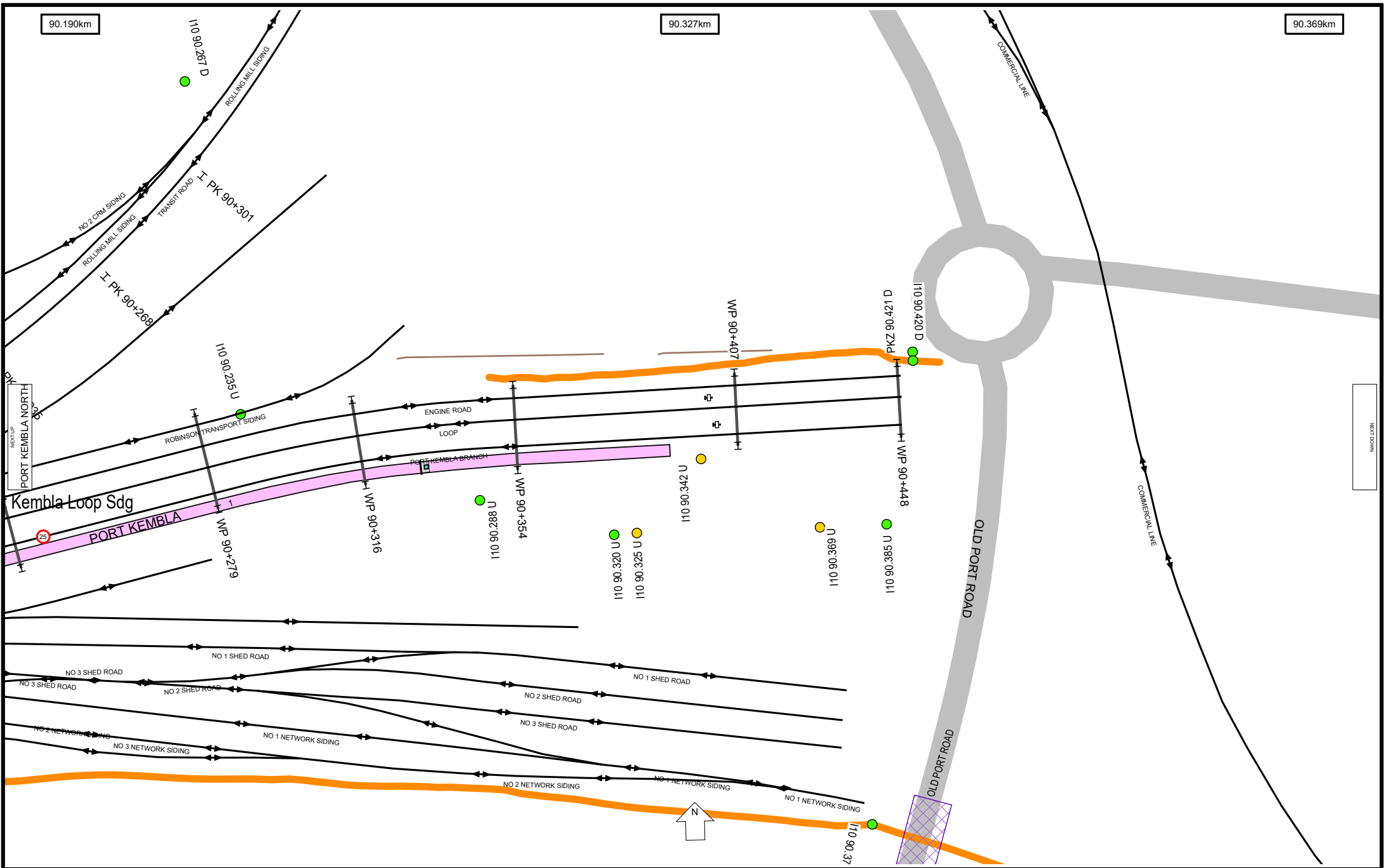
92.195km

NEXT UP
PORT KEMBLA NORTH

NEXT DOWN
PORT KEMBLA NORTH



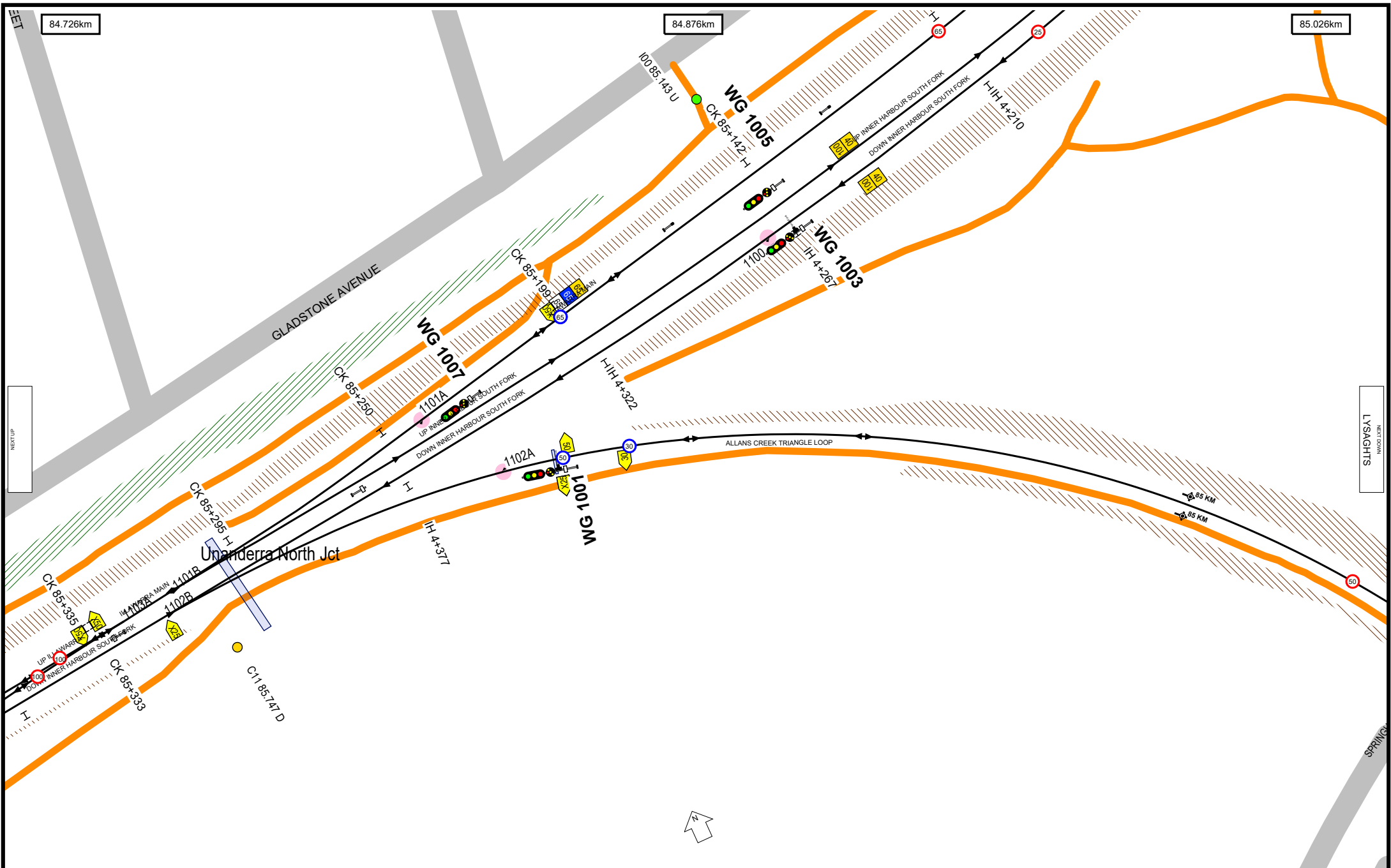


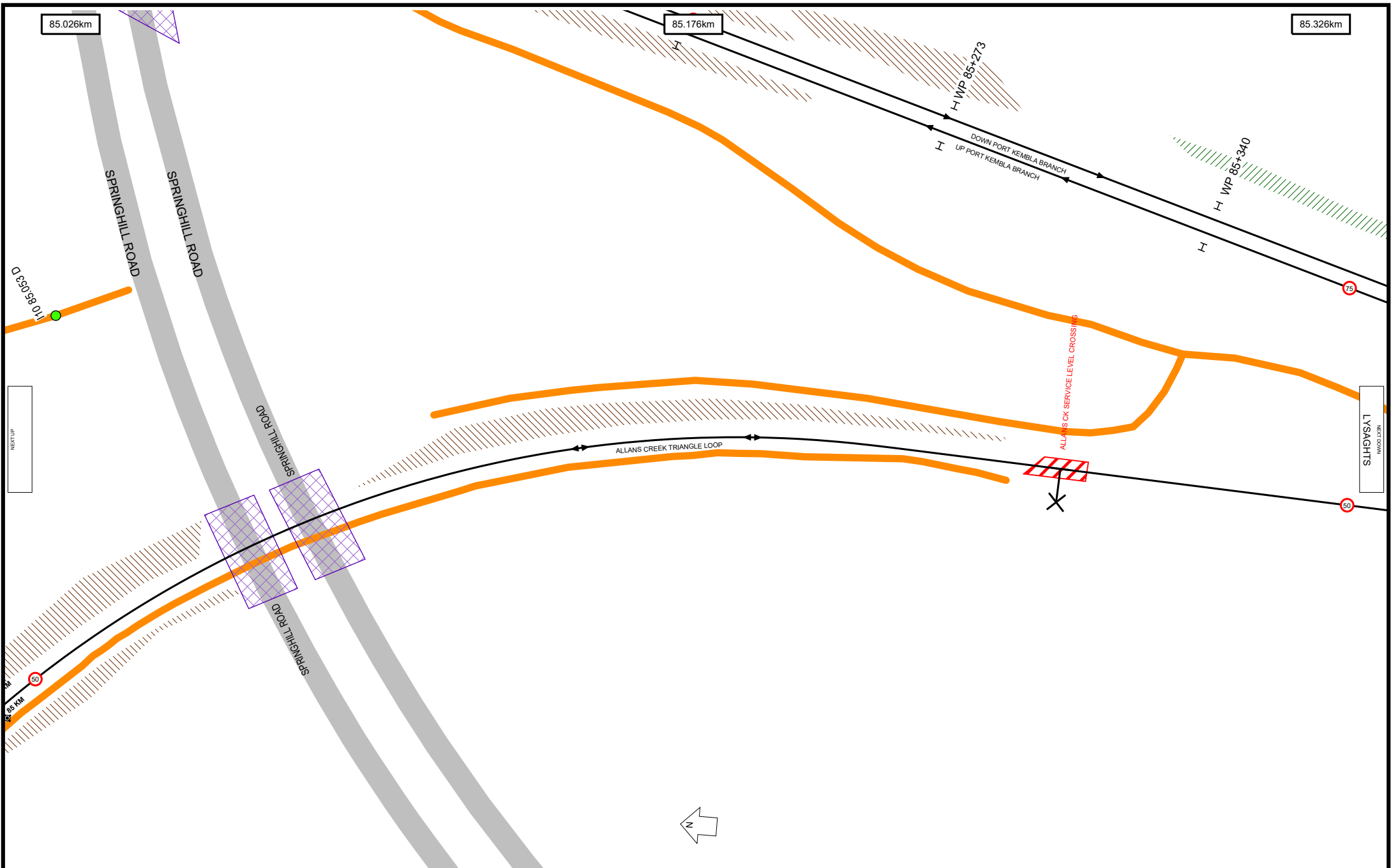


90.190km

90.327km

90.369km





85.026km

85.176km

85.326km

SPRINGHILL ROAD

SPRINGHILL ROAD

SPRINGHILL ROAD

SPRINGHILL ROAD

H WP 85+273

DOWN PORT KEMBLA BRANCH
UP PORT KEMBLA BRANCH

H WP 85+340

ALLANS CREEK TRIANGLE LOOP

ALLANS CREEK SERVICE LEVEL CROSSING

LYSAGHTS

NEXT UP



85.326km

85.476km

85.524km



Location Index

ALLANS CREEK	7
CONISTON JCT	2
CONISTON SUB STN	2
CONISTON TRACTION SUBSTATION	2
CRINGILA	10
CRINGILA YARD	10
INNER HARBOUR JCT	2
LYSAGHTS PLATFORM	6
LYSAGHTS YARD	6
PORT KEMBLA	17
PORT KEMBLA AUSTRALIAN FERTILIZERS NO 3	16
PORT KEMBLA B H P CRUSHER	16
PORT KEMBLA BOOM	16
PORT KEMBLA DEPOT	17
PORT KEMBLA F/GANG	16
PORT KEMBLA LOCO	17
PORT KEMBLA LOOP SDG	16
PORT KEMBLA NIMMO	16
PORT KEMBLA NORTH	12
PORT KEMBLA NORTH NTH YARD	13
PORT KEMBLA NORTH STH YARD	12
PORT KEMBLA OUT HBR ANL	16
PORT KEMBLA PORTS CORP BOUNDARY IH TO UNJ	2
PORT KEMBLA ROBINSON ILLAWARRRA	
TRANS	16
UNANDERRA NORTH JCT	18

Bridge Index

ALLANS CREEK	7
ALLANS CREEK ACCESS BRIDGE	7
BLUESCOPE RAIL FLYOVER	12
BLUESCOPE RAILWAY FLYOVER	8
BLUESCOPE ROAD	8
BRIDGE STREET	2
CRINGILA STATION FOOTBRIDGE	10
CRINGILA WATER CROSSING	10
CRINGILLA BLUESCOPE SERVICE	
CROSSING	11
FLINDERS STREET	12
FOOTBRIDGE	11
INNER HARBOUR FLYOVER	3
LYSAGHTS BLUESCOPE SERVICE	
BRIDGE	5
LYSAGHTS BLUESCOPE SERVICE	
CROSSING	7
LYSAGHTS STATION FOOTBRIDGE	6
LYSAGHTS WATER CROSSING	7
OLD PORT ROAD	17
PORT KEMBLA NORTH STATION	
FOOTBRIDGE	12
PORT KEMBLA NORTH WATER	
CROSSING	11
PT KEMBLA NTH BLUESCOPE SERVICE	
CROSSING	11
SPRINGHILL ROAD	3