

DRIVERS ROUTE KNOWLEDGE DIAGRAMS

SOUTH WEST RAIL LINK (SWRL)

GLENFIELD

EDMONDSON PARK

LEPPINGTON

Effective Date: October 2025

Version: 4.26

Explanatory Notes:

Navigate to your area of interest via the station index or by using links created in Adobe bookmarks.

This document is approved for **route knowledge only**.

Do not use these diagrams for any safety related purpose without validating the information against a controlled source or in the field.

Information in these diagrams is uncontrolled.

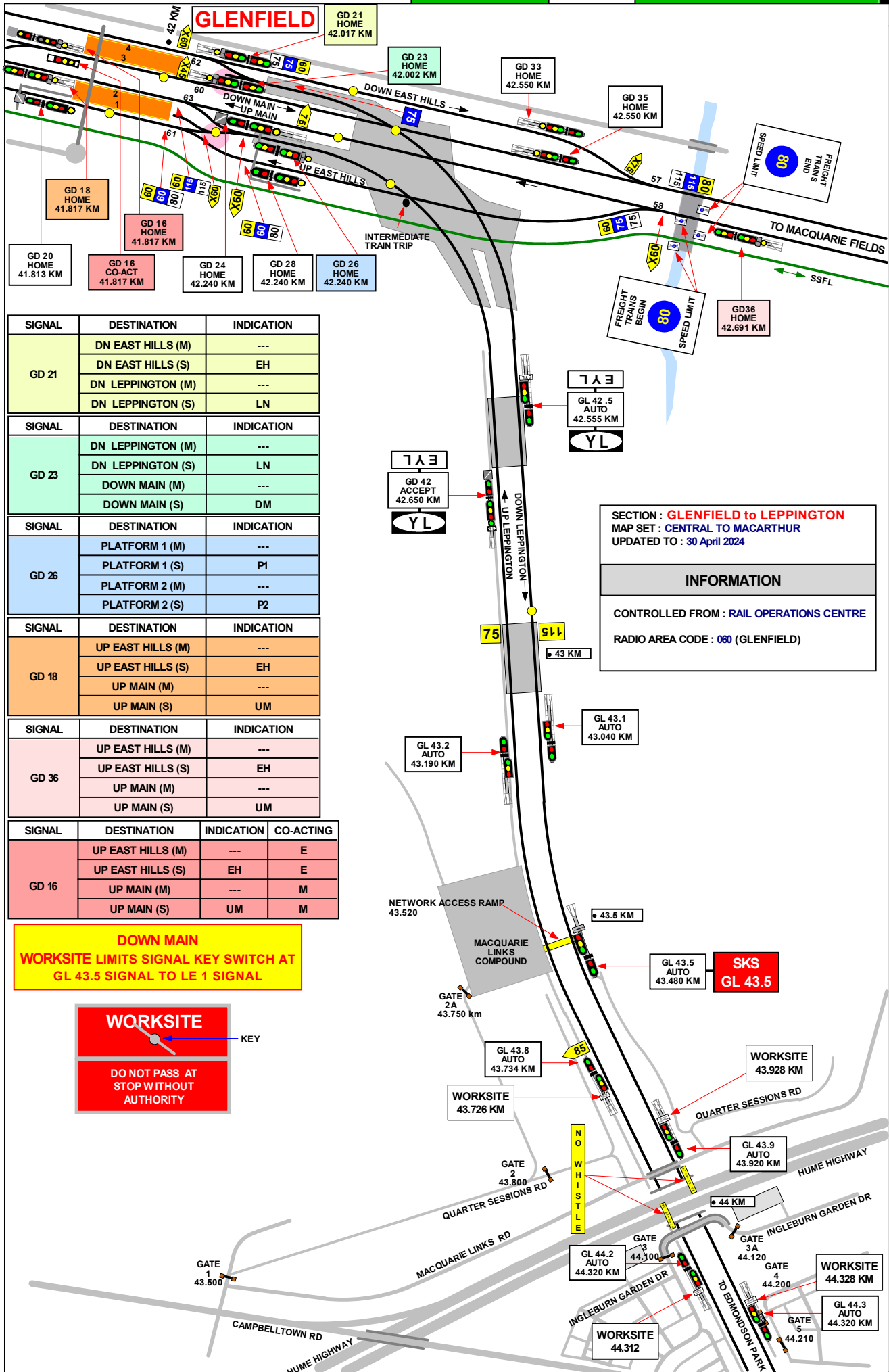
Please report any updates to
gjs.support@transport.nsw.gov.au



Copyright: Sydney Trains

Ownership: Location Services

Location: CM Record No.D2015/563



SIGNAL	DESTINATION	INDICATION
GD 21	DN EAST HILLS (M)	---
	DN EAST HILLS (S)	EH
	DN LEPPINGTON (M)	---
	DN LEPPINGTON (S)	LN

SIGNAL	DESTINATION	INDICATION
GD 23	DN LEPPINGTON (M)	---
	DN LEPPINGTON (S)	LN
	DOWN MAIN (M)	---
	DOWN MAIN (S)	DM

SIGNAL	DESTINATION	INDICATION
GD 26	PLATFORM 1 (M)	---
	PLATFORM 1 (S)	P1
	PLATFORM 2 (M)	---
	PLATFORM 2 (S)	P2

SIGNAL	DESTINATION	INDICATION
GD 18	UP EAST HILLS (M)	---
	UP EAST HILLS (S)	EH
	UP MAIN (M)	---
	UP MAIN (S)	UM

SIGNAL	DESTINATION	INDICATION
GD 36	UP EAST HILLS (M)	---
	UP EAST HILLS (S)	EH
	UP MAIN (M)	---
	UP MAIN (S)	UM

SIGNAL	DESTINATION	INDICATION	CO-ACTING
GD 16	UP EAST HILLS (M)	---	E
	UP EAST HILLS (S)	EH	E
	UP MAIN (M)	---	M
	UP MAIN (S)	UM	M

SECTION : GLENFIELD to LEPPINGTON
 MAP SET : CENTRAL TO MACARTHUR
 UPDATED TO : 30 April 2024

INFORMATION

CONTROLLED FROM : RAIL OPERATIONS CENTRE

RADIO AREA CODE : 060 (GLENFIELD)

DOWN MAIN
 WORKSITE LIMITS SIGNAL KEY SWITCH AT
 GL 43.5 SIGNAL TO LE 1 SIGNAL

WORKSITE

DO NOT PASS AT
 STOP WITHOUT
 AUTHORITY

SECTION : GLENFIELD to LEPPINGTON
MAP SET : CENTRAL TO MACARTHUR
UPDATED TO : 30 April 2024

GRADIENT

INFORMATION

CONTROLLED FROM : RAIL OPERATIONS CENTRE

RADIO AREA CODE : 060 (GLENFIELD)

UP MAIN
WORKSITE LIMITS SIGNAL KEY SWITCH AT
GL 44.8 SIGNAL TO GD 42 SIGNAL

WORKSITE



KEY

DO NOT PASS AT STOP WITHOUT AUTHORITY

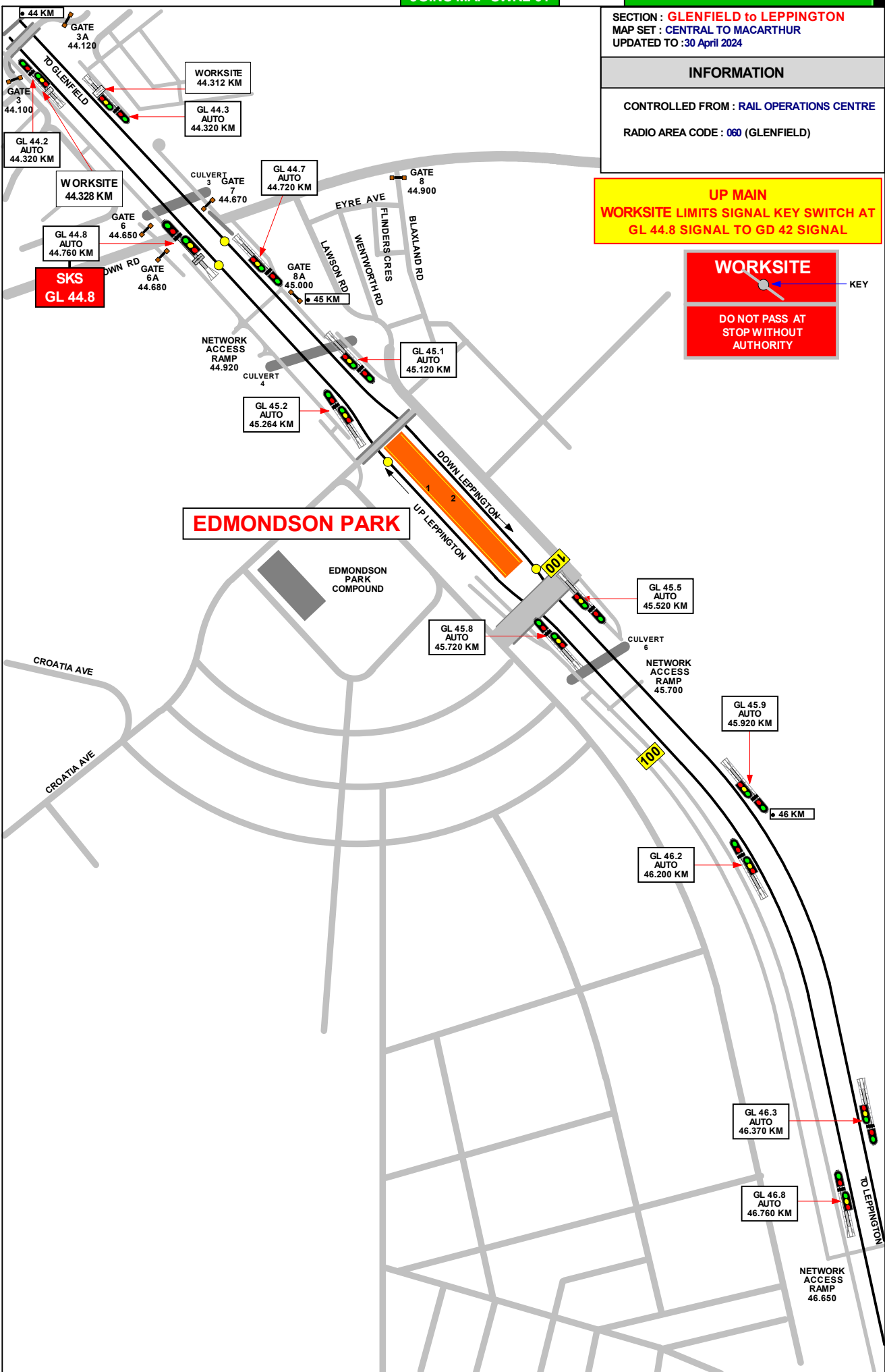
1 IN 41

1 IN 66

1 IN 282

1 IN 60

1 IN 77



EDMONDSON PARK

SECTION : **GLENFIELD to LEPPINGTON**
 MAP SET : **CENTRAL TO MACARTHUR**
 UPDATED TO : **30 April 2024**

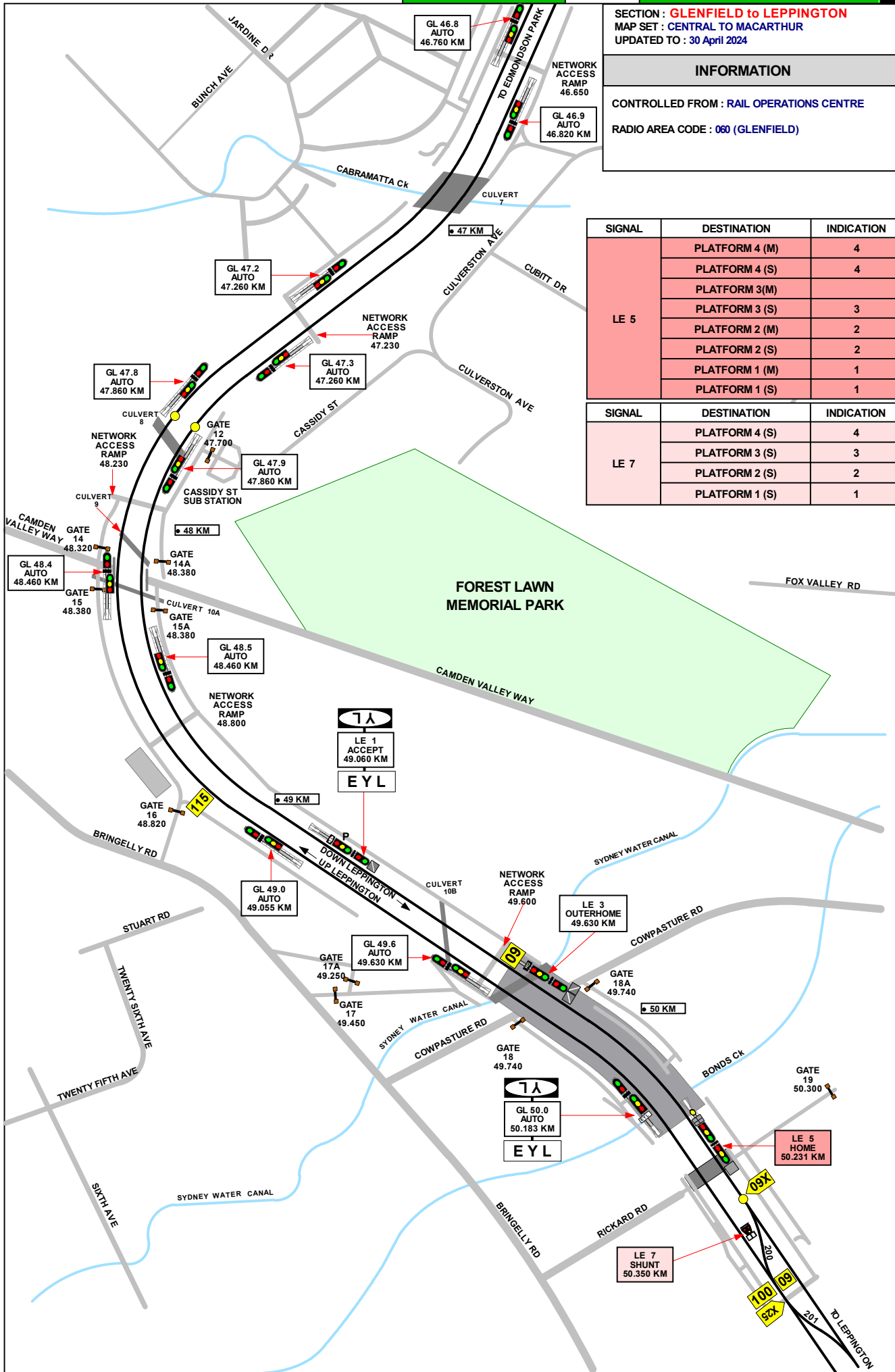
GRADIENT

INFORMATION

CONTROLLED FROM : **RAIL OPERATIONS CENTRE**
 RADIO AREA CODE : **060 (GLENFIELD)**

SIGNAL	DESTINATION	INDICATION
LE 5	PLATFORM 4 (M)	4
	PLATFORM 4 (S)	4
	PLATFORM 3 (M)	
	PLATFORM 3 (S)	3
	PLATFORM 2 (M)	2
	PLATFORM 2 (S)	2
	PLATFORM 1 (M)	1
	PLATFORM 1 (S)	1

SIGNAL	DESTINATION	INDICATION
LE 7	PLATFORM 4 (S)	4
	PLATFORM 3 (S)	3
	PLATFORM 2 (S)	2
	PLATFORM 1 (S)	1



1 IN 64

1 IN 190

1 IN 41

1 IN 40

1 IN 42

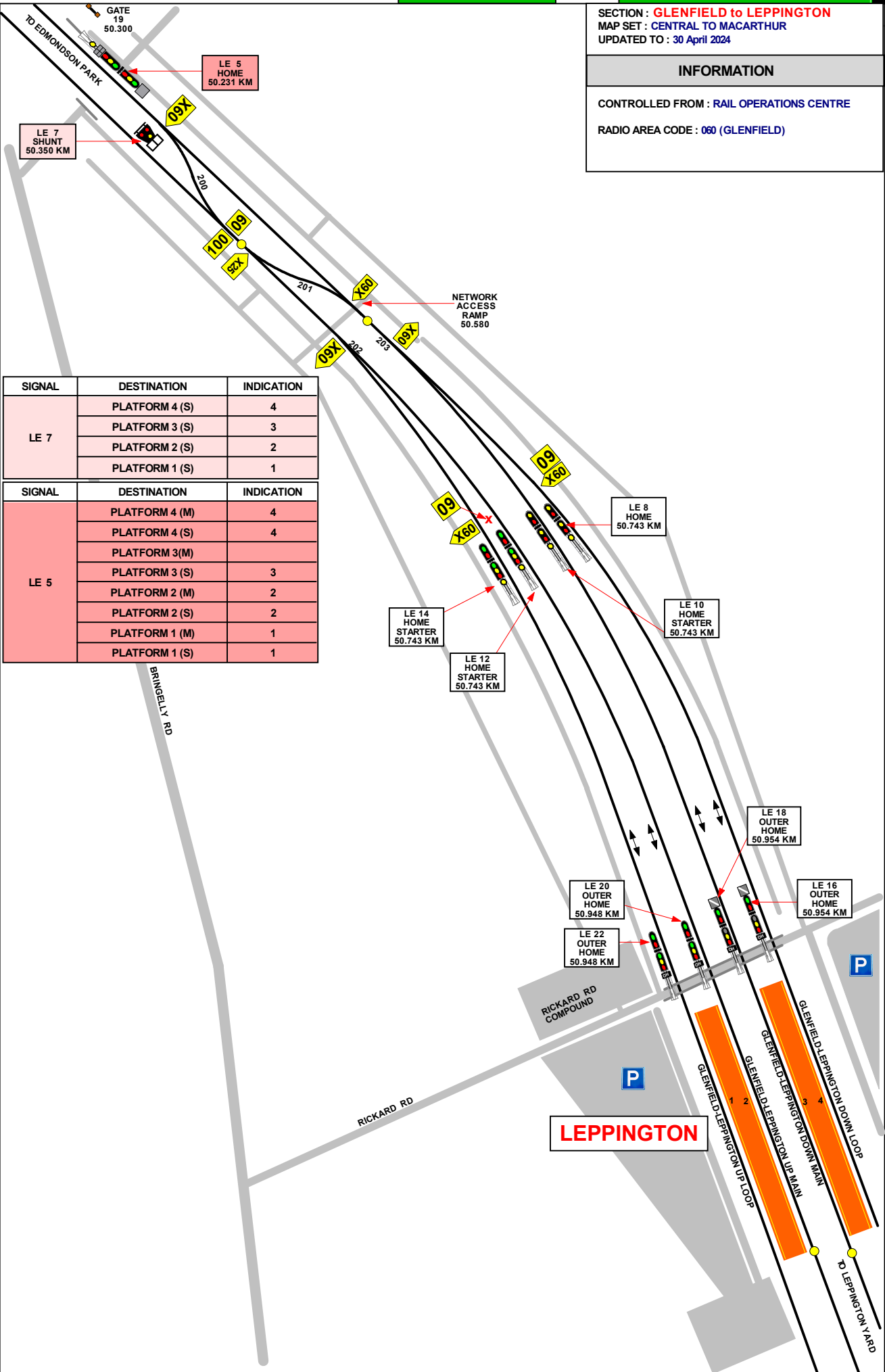
1 IN 200

SECTION : **GLENFIELD to LEPPINGTON**
 MAP SET : CENTRAL TO MACARTHUR
 UPDATED TO : 30 April 2024

GRADIENT

INFORMATION

CONTROLLED FROM : RAIL OPERATIONS CENTRE
 RADIO AREA CODE : 060 (GLENFIELD)



SIGNAL	DESTINATION	INDICATION
LE 7	PLATFORM 4 (S)	4
	PLATFORM 3 (S)	3
	PLATFORM 2 (S)	2
	PLATFORM 1 (S)	1
LE 5	PLATFORM 4 (M)	4
	PLATFORM 4 (S)	4
	PLATFORM 3 (M)	3
	PLATFORM 3 (S)	3
	PLATFORM 2 (M)	2
	PLATFORM 2 (S)	2
	PLATFORM 1 (M)	1
PLATFORM 1 (S)	1	

1 IN 200

1 IN 185

1 IN 185

SECTION : **GLENFIELD to LEPPINGTON**
 MAP SET : CENTRAL TO MACARTHUR
 UPDATED TO : 30 April 2024

GRADIENT

INFORMATION

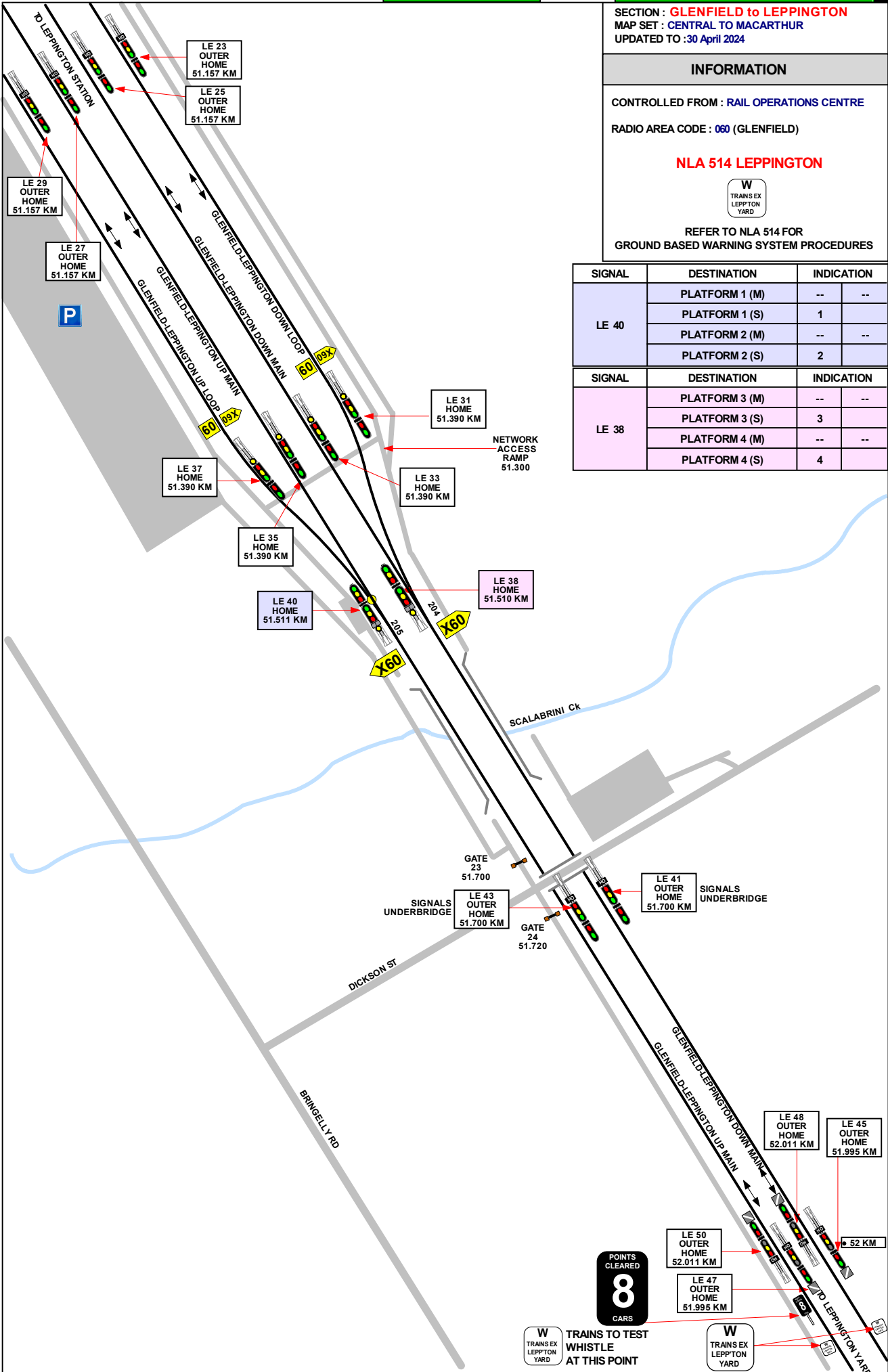
CONTROLLED FROM : RAIL OPERATIONS CENTRE
 RADIO AREA CODE : 060 (GLENFIELD)

NLA 514 LEPPINGTON



REFER TO NLA 514 FOR
 GROUND BASED WARNING SYSTEM PROCEDURES

SIGNAL	DESTINATION	INDICATION	
LE 40	PLATFORM 1 (M)	--	--
	PLATFORM 1 (S)	1	
	PLATFORM 2 (M)	--	--
	PLATFORM 2 (S)	2	
SIGNAL	DESTINATION	INDICATION	
LE 38	PLATFORM 3 (M)	--	--
	PLATFORM 3 (S)	3	
	PLATFORM 4 (M)	--	--
	PLATFORM 4 (S)	4	



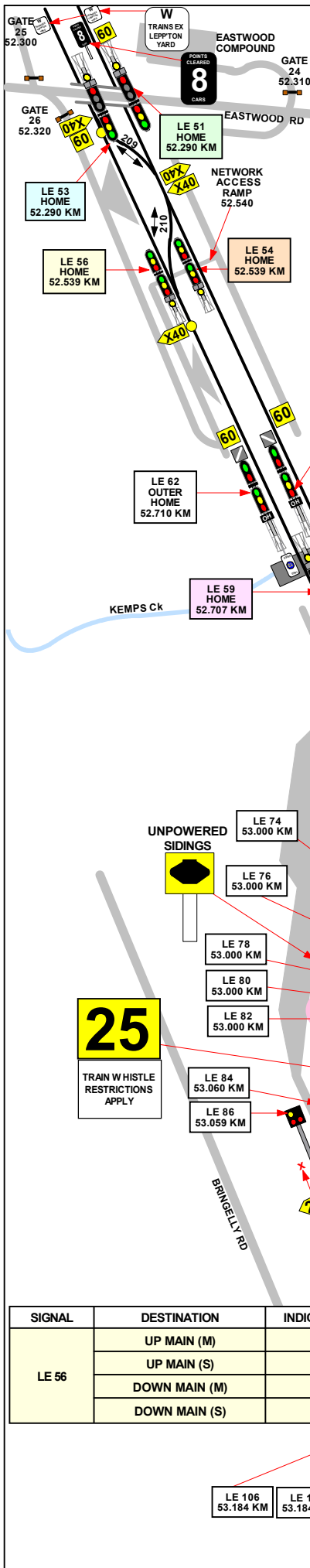
1 IN 155

1 IN 200

POINTS CLEARED
8
 CARS

W TRAINS EX LEPPINGTON YARD
 TRAINS TO TEST WHISTLE AT THIS POINT

W TRAINS EX LEPPINGTON YARD



SIGNAL	DESTINATION	INDICATION
LE 51	DOWN MAIN (M)	---
	DOWN MAIN (S)	D
	UP MAIN (M)	---
	UP MAIN (S)	U

SIGNAL	DESTINATION	INDICATION
LE 53	DOWN MAIN (M)	---
	DOWN MAIN (S)	D
	UP MAIN (M)	---
	UP MAIN (S)	U

W TRAINS EX LEPPTON YARD WHISTLE AT THIS POINT

SECTION : **GLENFIELD to LEPPINGTON**
 MAP SET : CENTRAL TO MACARTHUR
 UPDATED TO : 30 April 2024

INFORMATION

CONTROLLED FROM : RAIL OPERATIONS CENTRE

RADIO AREA CODE : 060 (GLENFIELD)

NLA 514 LEPPINGTON

REFER TO NLA 514 FOR SPECIAL YARD INSTRUCTIONS

SIGNAL	DESTINATION	INDICATION	
LE 57	No. 10 SIDING (S)	1	0
	No. 9 SIDING (S)	9	
	No. 8 SIDING (S)	8	
	No. 7 SIDING (S)		7
	No. 6 SIDING (S)		6

SIGNAL	DESTINATION	INDICATION	
LE 54	UP MAIN (M)	---	
	UP MAIN (S)	U	
	DOWN MAIN (M)	---	
	DOWN MAIN (S)	D	

SIGNAL	DESTINATION	INDICATION	
LE 59	No. 5 SIDING (S)	5	
	No. 4 SIDING (S)	4	
	No. 3 SIDING (S)		3
	No. 2 SIDING (S)		2
	No. 1 SIDING (S)		1
	No. 2 MACHINE SIDING (S)	M	2
	No. 1 MACHINE SIDING (S)	M	1

25
 TRAIN WHISTLE RESTRICTIONS APPLY

SIGNAL	DESTINATION	INDICATION
LE 56	UP MAIN (M)	---
	UP MAIN (S)	U
	DOWN MAIN (M)	---
	DOWN MAIN (S)	D

1 IN 155

1 IN 200