

# DRIVERS ROUTE KNOWLEDGE DIAGRAMS

## PORT KEMBLA LINE

LYSAGHTS

CRINGILA

PORT KEMBLA NORTH

PORT KEMBLA

**Effective Date:** June 2026

**Version:** 4.22

### **Explanatory Notes:**

Navigate to your area of interest via the station index or by using links created in Adobe bookmarks.

This document is approved for **route knowledge only**.

**Do not use these diagrams for any safety related purpose** without validating the information against a controlled source or in the field.

Information in these diagrams is uncontrolled.

Please report any updates to  
[gjs.support@transport.nsw.gov.au](mailto:gjs.support@transport.nsw.gov.au)



**Copyright:** Sydney Trains

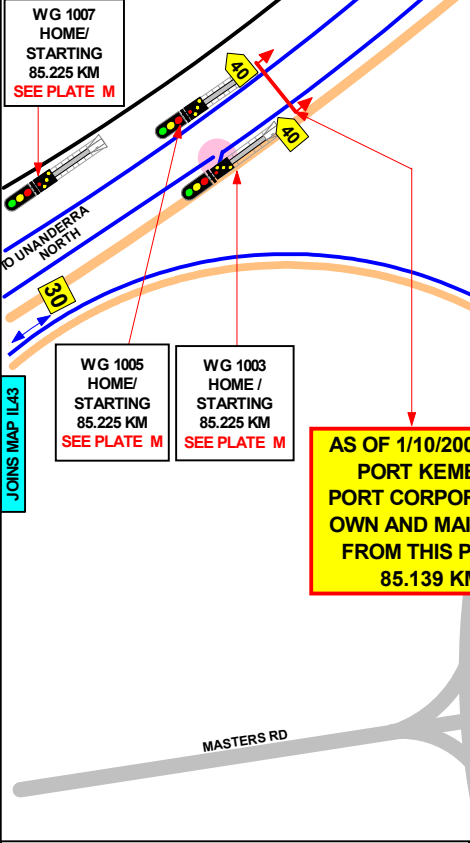
**Ownership:** Location Services

**Location:** CM Record No.D2015/565

**EXTENT OF YARD LIMITS**

YARD WORKING IS IN OPERATION IN THE AREA BOUNDED BY THE FOLLOWING SIGNALS AND LOCATIONS IN THE PORT KEMBLA NORTH AREA:

FROM	TO
DOWN HOME MAIN SIGNAL No.WG 81 D	MAIN LINE PORT KEMBLA TERMINUS
MAIN LINE PORT KEMBLA TERMINUS	UP AUTOMATIC SIGNAL No.WG 84 U
UP HOME SIGNALS No.WG 1002 & WG 1004	MAIN LINE PORT KEMBLA TERMINUS
MAIN LINE PORT KEMBLA TERMINUS	UP HOME SIGNAL No. WG 1001 UNANDERRA NORTH



SECTION : CONISTON TO LYSAGHTS  
 MAP SET : CONISTON TO PORT KEMBLA  
 UPDATED TO : 01 October 2025

**INFORMATION**

CONTROLLED FROM : WOLLONGONG  
 RADIO AREA CODE : 011 / 12

**SPECIAL POINTS OF INTEREST**  
**GENERAL ARRANGEMENTS**

ALL TRAINS MOVEMENTS WITHIN THE CONISTON AND UNANDERRA NORTH AREA ARE CONTROLLED BY THE SIGNALLER AT WOLLONGONG SIGNALBOX, AND ARE WORKED UNDER YARD WORKING CONDITIONS

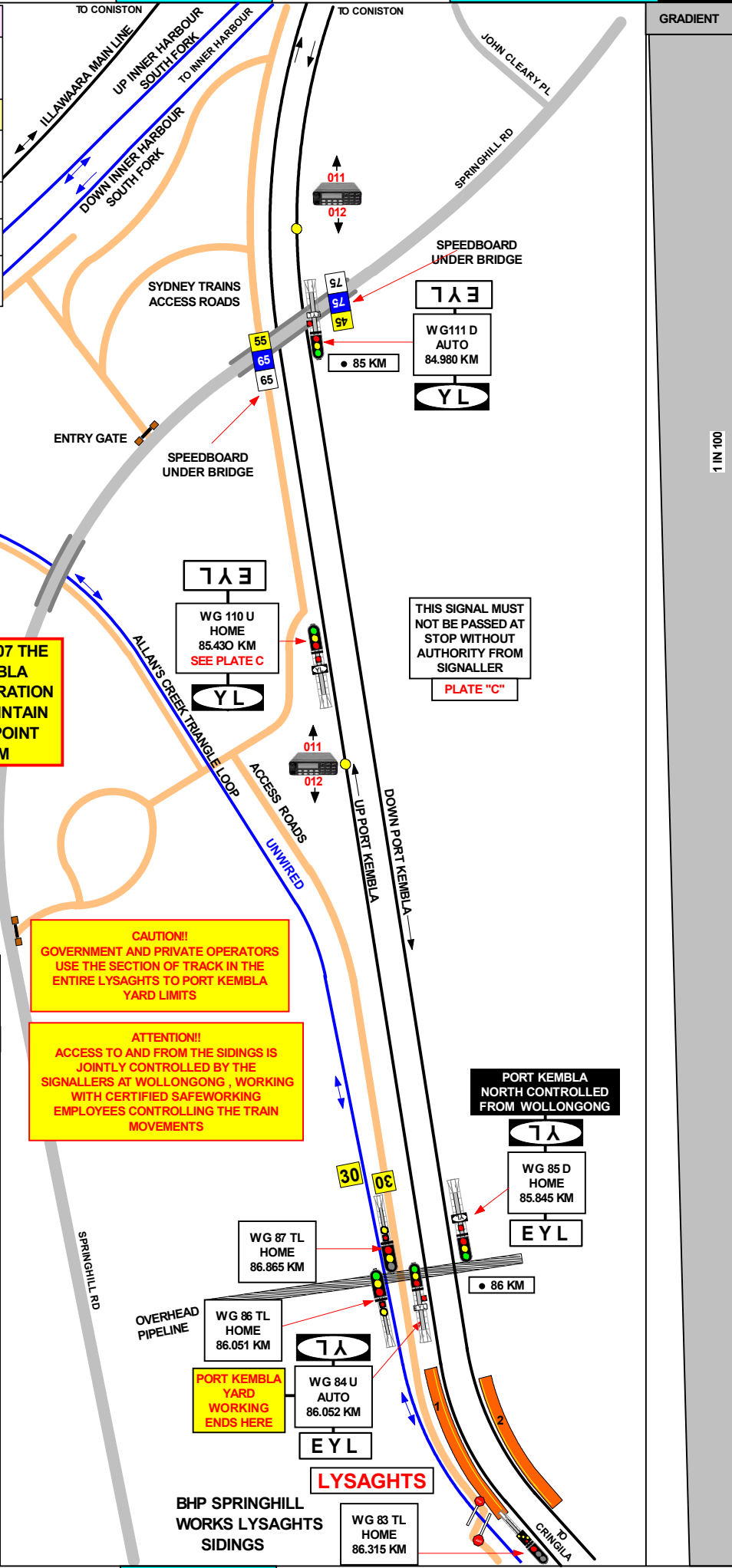
UNANDERRA NORTH IS THE JUNCTION OF THE TRIANGLE LOOP AND THE DOWN AND UP SOUTH FORKS WITH THE DOWN AND UP MAIN LINES  
 HALF PILOT STAFF

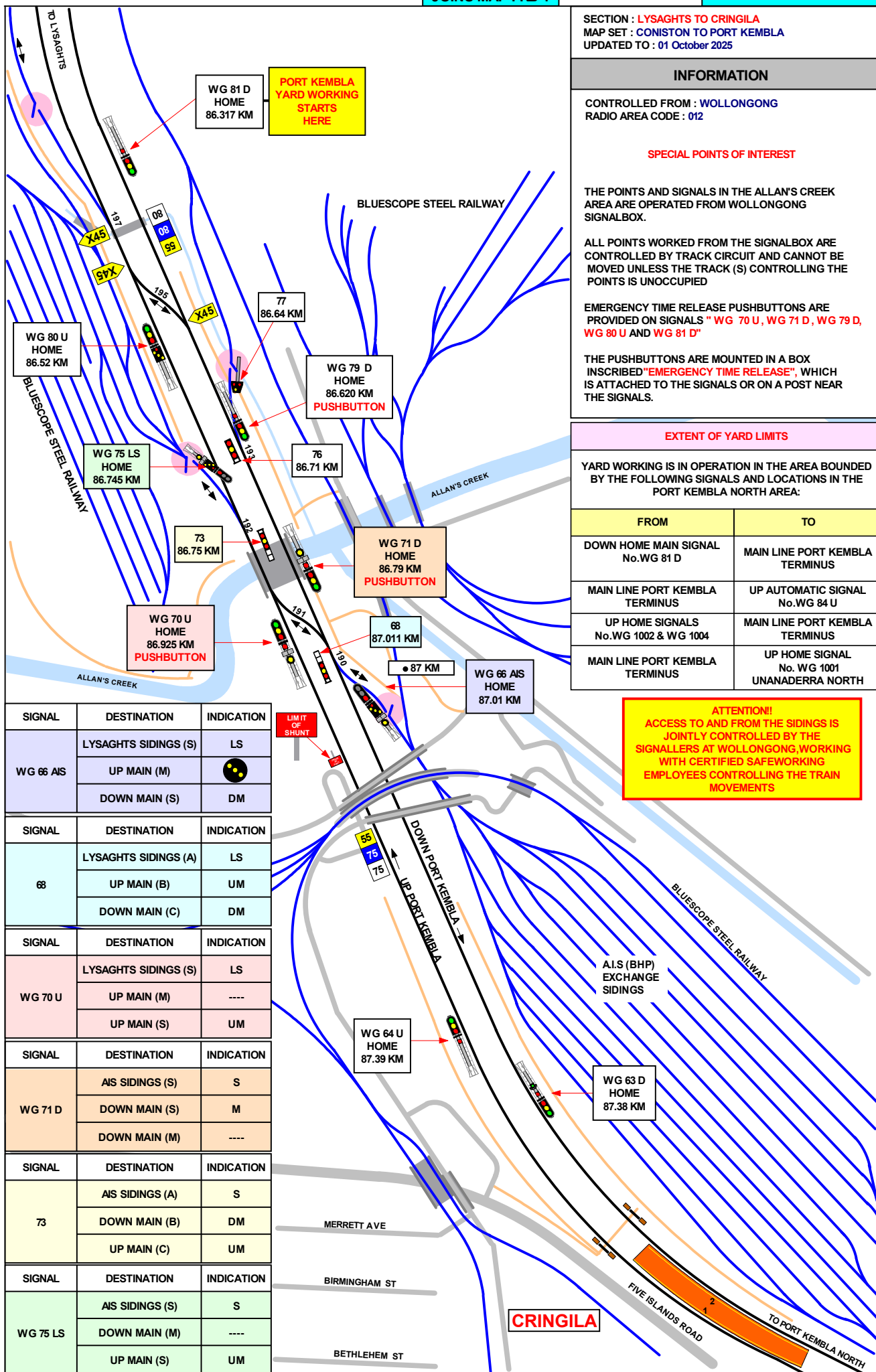
HALF PILOT STAFFS ARE PROVIDED ON SIGNAL No. WG 1003 FOR THE WOLLONGONG - UNANDERRA SECTION SEE MAP IL44.

THE HALF PILOT STAFFS FOR THE SECTION WOLLONGONG - UNANDERRA ARE INSCRIBED "UNANDERRA - UNANDERRA NORTH".

EMERGENCY TIME RELEASE PUSHBUTTONS ARE PROVIDED ON SIGNALS "WG 114 U"

THE PUSHBUTTONS ARE MOUNTED IN A BOX INSCRIBED "EMERGENCY TIME RELEASE", WHICH IS ATTACHED TO THE SIGNALS OR ON A POST NEAR THE SIGNALS.





SECTION : LYSAGHTS TO CRINGILA  
 MAP SET : CONISTON TO PORT KEMBLA  
 UPDATED TO : 01 October 2025

**INFORMATION**

CONTROLLED FROM : WOLLONGONG  
 RADIO AREA CODE : 012

**SPECIAL POINTS OF INTEREST**

THE POINTS AND SIGNALS IN THE ALLAN'S CREEK AREA ARE OPERATED FROM WOLLONGONG SIGNALBOX.

ALL POINTS WORKED FROM THE SIGNALBOX ARE CONTROLLED BY TRACK CIRCUIT AND CANNOT BE MOVED UNLESS THE TRACK (S) CONTROLLING THE POINTS IS UNOCCUPIED

EMERGENCY TIME RELEASE PUSHBUTTONS ARE PROVIDED ON SIGNALS " WG 70 U, WG 71 D, WG 79 D, WG 80 U AND WG 81 D"

THE PUSHBUTTONS ARE MOUNTED IN A BOX INSCRIBED "EMERGENCY TIME RELEASE", WHICH IS ATTACHED TO THE SIGNALS OR ON A POST NEAR THE SIGNALS.

**EXTENT OF YARD LIMITS**

YARD WORKING IS IN OPERATION IN THE AREA BOUNDED BY THE FOLLOWING SIGNALS AND LOCATIONS IN THE PORT KEMBLA NORTH AREA:

FROM	TO
DOWN HOME MAIN SIGNAL No. WG 81 D	MAIN LINE PORT KEMBLA TERMINUS
MAIN LINE PORT KEMBLA TERMINUS	UP AUTOMATIC SIGNAL No. WG 84 U
UP HOME SIGNALS No. WG 1002 & WG 1004	MAIN LINE PORT KEMBLA TERMINUS
MAIN LINE PORT KEMBLA TERMINUS	UP HOME SIGNAL No. WG 1001 UNANADERRA NORTH

**ATTENTION!**  
 ACCESS TO AND FROM THE SIDINGS IS JOINTLY CONTROLLED BY THE SIGNALLERS AT WOLLONGONG, WORKING WITH CERTIFIED SAFEWORING EMPLOYEES CONTROLLING THE TRAIN MOVEMENTS

SIGNAL	DESTINATION	INDICATION
WG 66 AIS	LYSAGHTS SIDINGS (S)	LS
	UP MAIN (M)	●●●
	DOWN MAIN (S)	DM
68	LYSAGHTS SIDINGS (A)	LS
	UP MAIN (B)	UM
	DOWN MAIN (C)	DM
WG 70 U	LYSAGHTS SIDINGS (S)	LS
	UP MAIN (M)	---
	UP MAIN (S)	UM
WG 71 D	AIS SIDINGS (S)	S
	DOWN MAIN (S)	M
	DOWN MAIN (M)	---
73	AIS SIDINGS (A)	S
	DOWN MAIN (B)	DM
	UP MAIN (C)	UM
WG 75 LS	AIS SIDINGS (S)	S
	DOWN MAIN (M)	---
	UP MAIN (S)	UM

1 IN 100



