

# DRIVERS ROUTE KNOWLEDGE DIAGRAMS

## OLD MAIN SOUTH LINE

GRANVILLE  
MERRYLANDS  
GUILDFORD  
YENNORA  
FAIRFIELD  
CANLEY VALE  
CABRAMATTA

**Effective Date:** June 2026

**Version:** 4.38

### **Explanatory Notes:**

Navigate to your area of interest via the station index or by using links created in Adobe bookmarks.

This document is approved for **route knowledge only**.

**Do not use these diagrams for any safety related purpose** without validating the information against a controlled source or in the field.

Information in these diagrams is uncontrolled.

Please report any updates to  
[gis.support@transport.nsw.gov.au](mailto:gis.support@transport.nsw.gov.au)



**Copyright:** Sydney Trains

**Ownership:** Location Services

**Location:** CM Record No.D2015/567



SIGNAL	DESTINATION	INDICATION
GE 243	DOWN OLD SOUTH MAIN (M)	-
	DOWN WEST MAIN (M)	-
	DOWN OLD SOUTH MAIN (S)	DS
	DOWN WEST MAIN (S)	WM

SIGNAL	DESTINATION	INDICATION
GE 272	UP SUBURBAN (M)	-
	UP SUBURBAN (S)	US
	DOWN SUBURBAN (S)	DS

SECTION : **GRANVILLE TO HARRIS PARK**  
**GRANVILLE TO MERRYLANDS**  
 MAP SET : OLD MAIN SOUTH  
 PAGE : 2 OF 2  
 UPDATED TO : 1 May 2024

**INFORMATION**

CONTROLLED FROM : RAIL OPERATIONS CENTRE /  
 HOMEBUSH CONTROL CENTRE

RADIO AREA CODE : 041 (GRANVILLE)

**SPECIAL POINTS OF INTEREST**

**GRANVILLE**

THE POINTS AND SIGNALS AT GRANVILLE, PARRAMATTA, WESTMEAD AND THE JUNCTIONS AT BOTH ENDS OF THE SOUTH WEST OUTER AND SOUTH WEST INNER LINES ARE ALL PART OF THE GRANVILLE INTERLOCKING.

THE SHUNTING NECK IS APPROXIMATELY 260 METRES LONG AND HOLDS AROUND 12 CARS.

**APPENDICES**  
 PLEASE SEE APPENDICES FOR POINTS OF NO RETURN, TERMINATING MOVEMENTS AND SIDING LENGTHS

SIGNAL	DESTINATION	INDICATION
GE 245	DOWN WEST MAIN (S)	WM
	DOWN OLD SOUTH MAIN (M)	S
	DOWN WEST MAIN (M)	W
	UP OLD SOUTH MAIN (S)	US

SIGNAL	DESTINATION	INDICATION
GE 287	DOWN OLD SOUTH MAIN (M)	-
	DOWN OLD SOUTH MAIN (S)	DS
	UP OLD SOUTH MAIN (S)	-

SIGNAL	DESTINATION	INDICATION
GE 247	DOWN WEST MAIN (M)	-
	DOWN WEST SUBURBAN (M)	-
	DOWN WEST MAIN (S)	WM
	DOWN WEST SUBURBAN (S)	WS

SIGNAL	DESTINATION	INDICATION
GE 289	DOWN OLD SOUTH MAIN (M)	-
	DOWN OLD SOUTH MAIN (S)	DS
	UP OLD SOUTH MAIN (S)	-

SIGNAL	DESTINATION	INDICATION
GE 256	UP SUBURBAN (M)	-
	UP SUBURBAN (S)	US
	DOWN SUBURBAN (M)	-
	DOWN SUBURBAN (S)	DS

SIGNAL	DESTINATION	INDICATION
GE 296	UP OLD SOUTH MAIN (M)	S
	DOWN OLD SOUTH MAIN (M)	D
	SOUTH WEST INNER (M)	W
	UP OLD SOUTH MAIN (S)	US
	DOWN OLD SOUTH MAIN (S)	WI
SOUTH WEST INNER (S)	DS	

SIGNAL	DESTINATION	INDICATION
GE 263	DOWN OLD SOUTH MAIN (M)	-
	DOWN SHUNTING NECK (S)	SN
	DOWN OLD SOUTH MAIN (S)	DS

SIGNAL	DESTINATION	INDICATION
GE 406	UP SUBURBAN (M)	-
	UP SUBURBAN (S)	US
	DOWN SUBURBAN (S)	DS

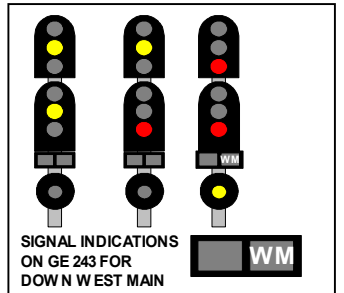
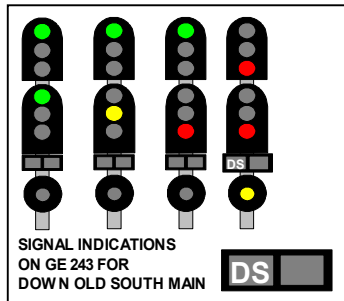
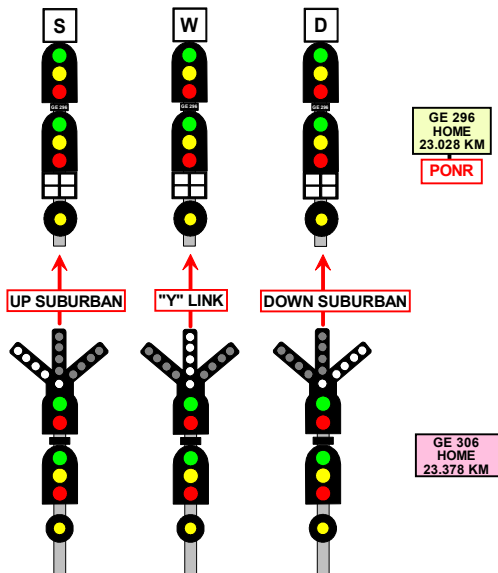
SIGNAL	DESTINATION	INDICATION
GE 265	DOWN OLD SOUTH MAIN	SN
	DOWN SHUNTING NECK	DS

SIGNAL	DESTINATION	INDICATION
GE 412	UP MAIN (M)	-
	UP SUBURBAN (M)	DS
	UP MAIN (S)	-
	UP SUBURBAN (S)	US

SIGNAL	DESTINATION	INDICATION
GE 266	UP SUBURBAN (M)	-
	UP SUBURBAN (S)	US
	DOWN SUBURBAN (S)	DS

SIGNAL	DESTINATION	INDICATION
GE 424	UP WEST MAIN (M)	-
	DOWN WEST MAIN (M)	D
	SOUTH WEST OUTER (M)	S
	UP WEST MAIN (S)	UW
	DOWN WEST MAIN (S)	DW
	SOUTH WEST OUTER (S)	SO

SIGNAL	DESTINATION	INDICATION
GE 270	UP SUBURBAN	US
	DOWN SUBURBAN	DS
	PERWAY SIDING	PS



SECTION : **MERRYLANDS TO GUILDFORD**  
 MAP SET : **OLD MAIN SOUTH LINE**  
 UPDATED TO : 1 May 2024

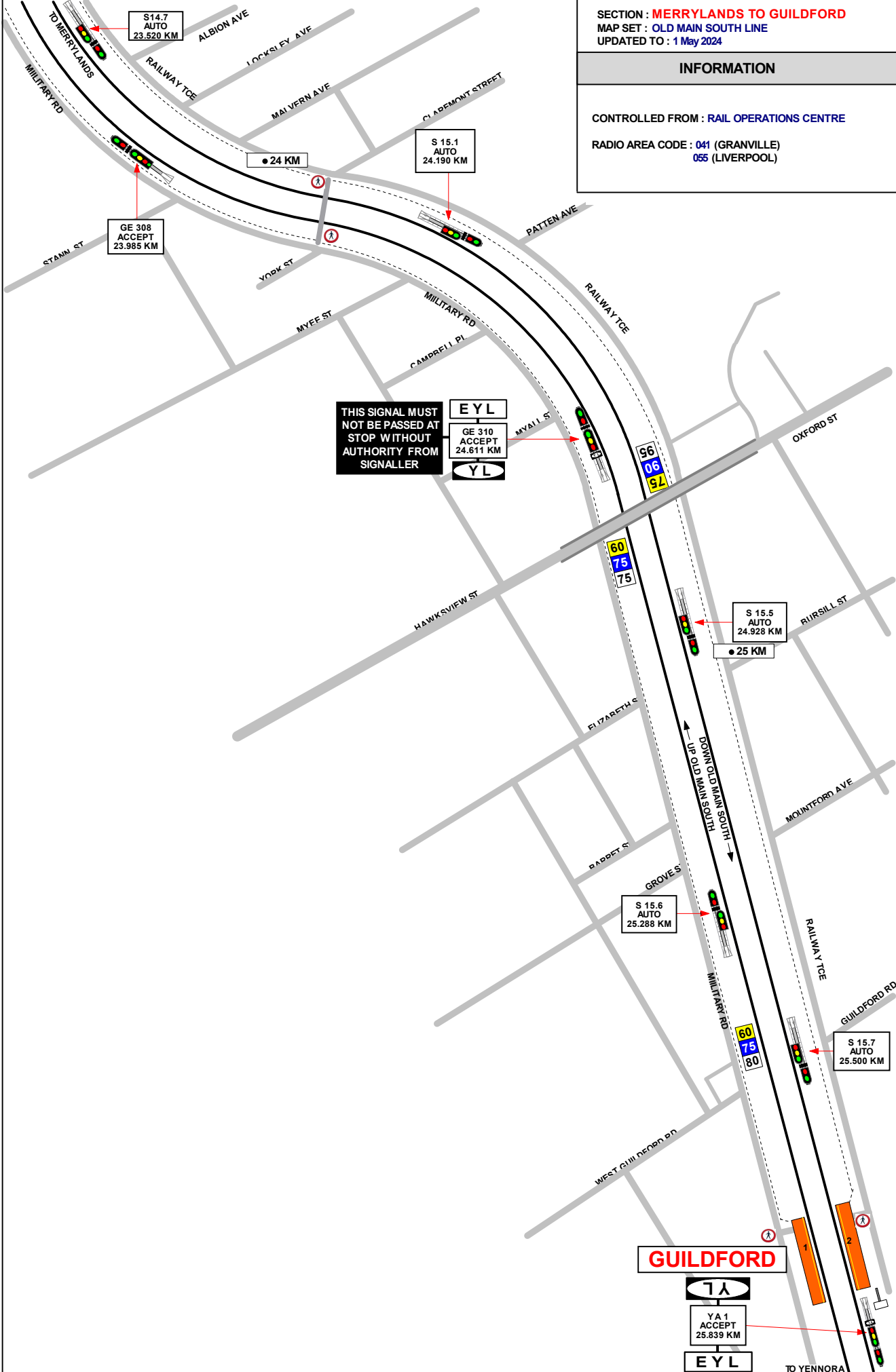
---

**INFORMATION**

---

CONTROLLED FROM : **RAIL OPERATIONS CENTRE**

RADIO AREA CODE : **041 (GRANVILLE)**  
**055 (LIVERPOOL)**



SECTION : GUILDFORD TO YENNORA  
 MAP SET : OLD MAIN SOUTH LINE  
 UPDATED TO : 1 May 2024

INFORMATION

CONTROLLED FROM : RAIL OPERATIONS CENTRE

RADIO AREA CODE : 041 (GRANVILLE)  
 055 (LIVERPOOL)

GRADIENT

1 IN 100

LEVEL

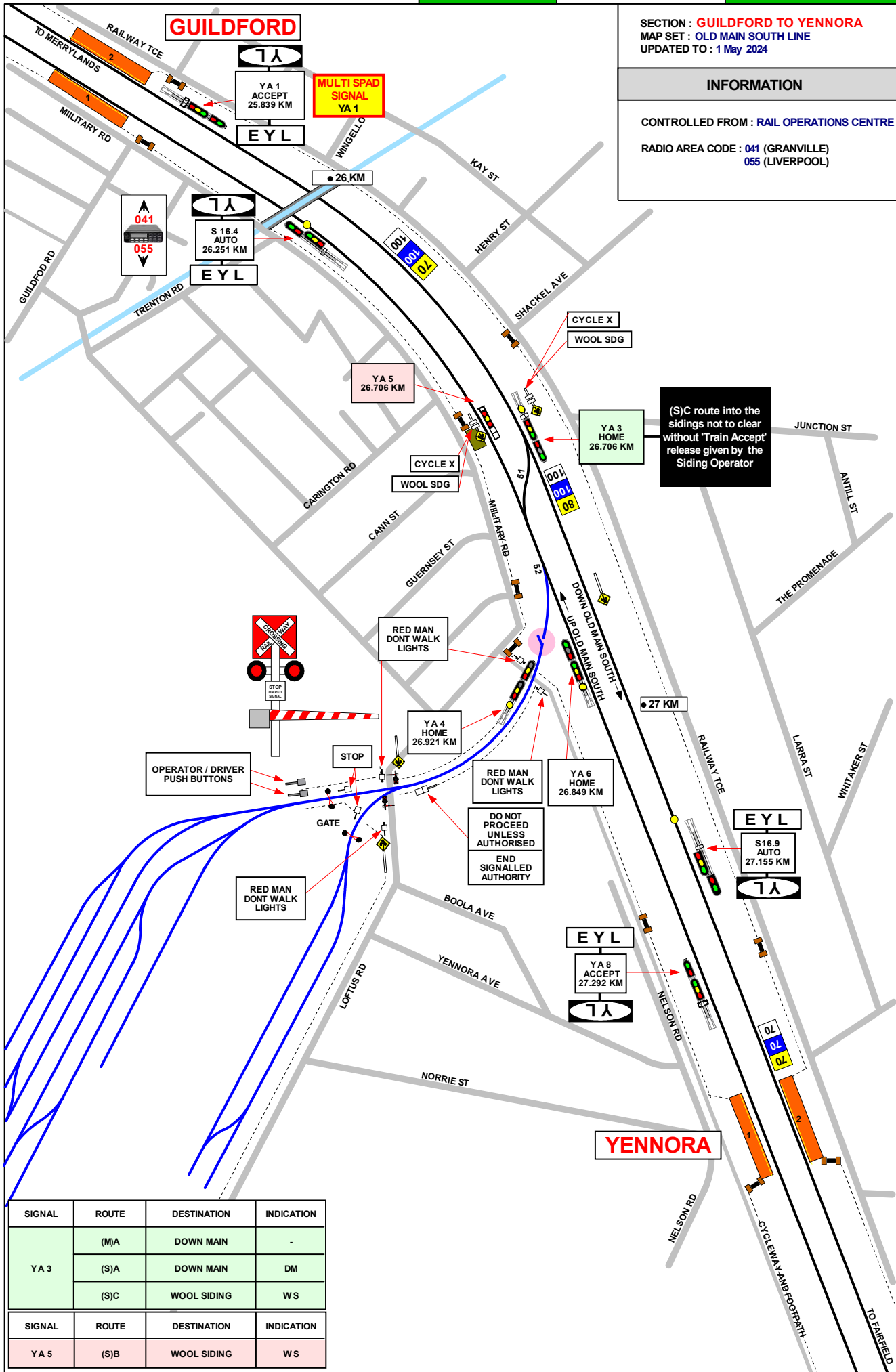
1 IN 100

1 IN 94

1 IN 100

LEVEL

LEVEL



**GUILDFORD**

YA 1 ACCEPT  
25.839 KM

**EYL**

**MULTI SPAD SIGNAL YA 1**

S 16.4 AUTO  
26.251 KM

**EYL**

YA 5  
26.706 KM

CYCLE X  
WOOL SDG

YA 3 HOME  
26.706 KM

(S)C route into the sidings not to clear without 'Train Accept' release given by the Siding Operator

CYCLE X  
WOOL SDG

YA 4 HOME  
26.921 KM

RED MAN DONT WALK LIGHTS

YA 6 HOME  
26.849 KM

DO NOT PROCEED UNLESS AUTHORISED  
END SIGNALLED AUTHORITY

**EYL**

S 16.9 AUTO  
27.155 KM

**EYL**

**EYL**

YA 8 ACCEPT  
27.292 KM

**EYL**

**YENNORA**

SIGNAL	ROUTE	DESTINATION	INDICATION
YA 3	(M)A	DOWN MAIN	-
	(S)A	DOWN MAIN	DM
	(S)C	WOOL SIDING	WS

SIGNAL	ROUTE	DESTINATION	INDICATION
YA 5	(S)B	WOOL SIDING	WS

SECTION : **YENNORA TO FAIRFIELD**  
MAP SET : OLD MAIN SOUTH LINE  
UPDATED TO : 1 May 2024

GRADIENT

1 IN 100

**INFORMATION**

CONTROLLED FROM : RAIL OPERATIONS CENTRE

RADIO AREA CODE : 055 (LIVERPOOL)

**SPECIAL POINTS OF INTEREST**

**YENNORA**

PINE RD LEVEL CROSSING IS LOCATED AT APPROXIMATELY 28.200 KM.

**FAIRFIELD**

THE FACING MOVEMENTS THROUGH 21 A POINTS DO NOT HAVE A SIGNAL PROVIDED.  
THE REQUIREMENT APPLIES TO BOTH THE NORMAL AND REVERSE POSITIONS.

**APPENDICES**

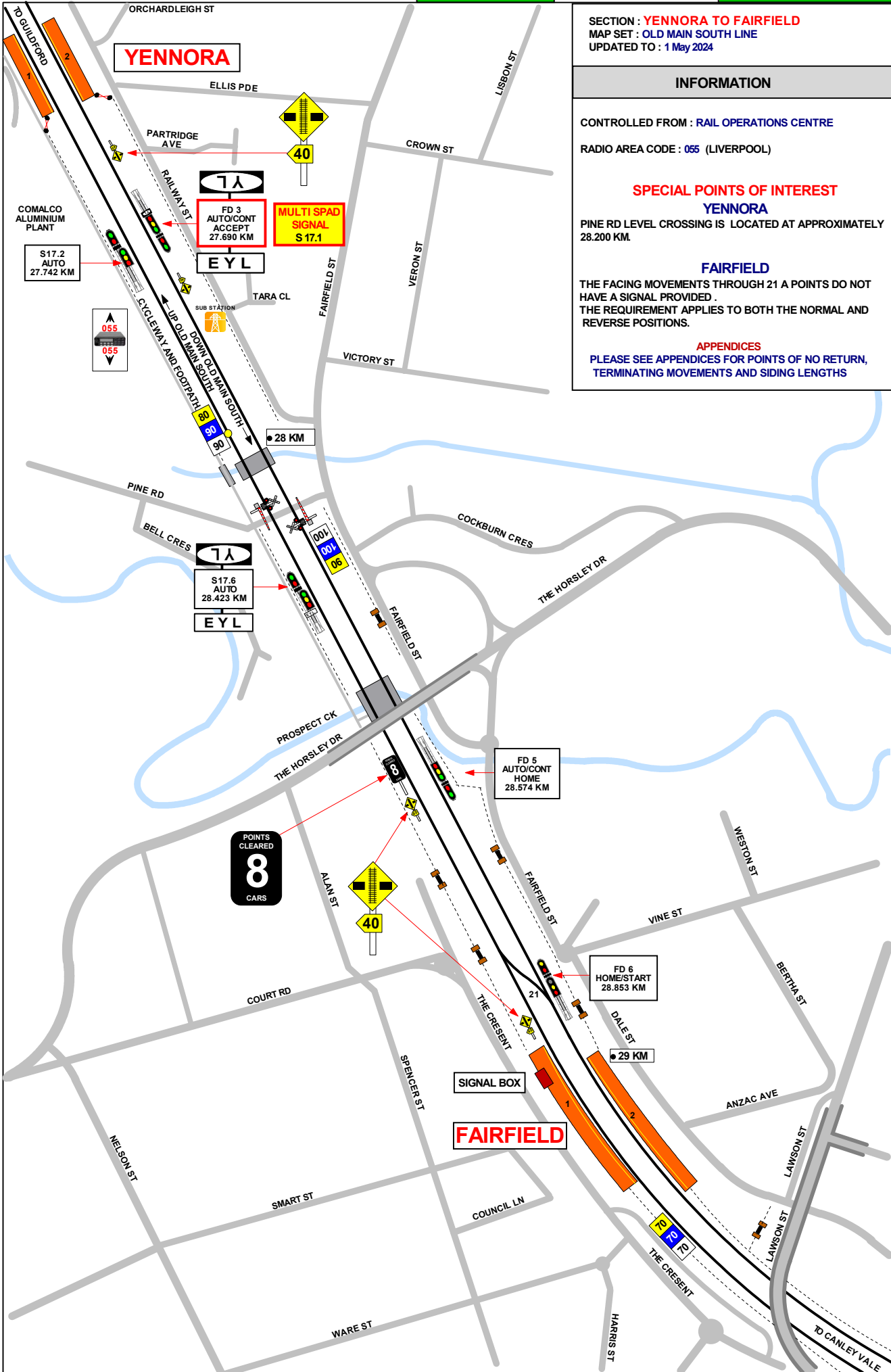
PLEASE SEE APPENDICES FOR POINTS OF NO RETURN, TERMINATING MOVEMENTS AND SIDING LENGTHS

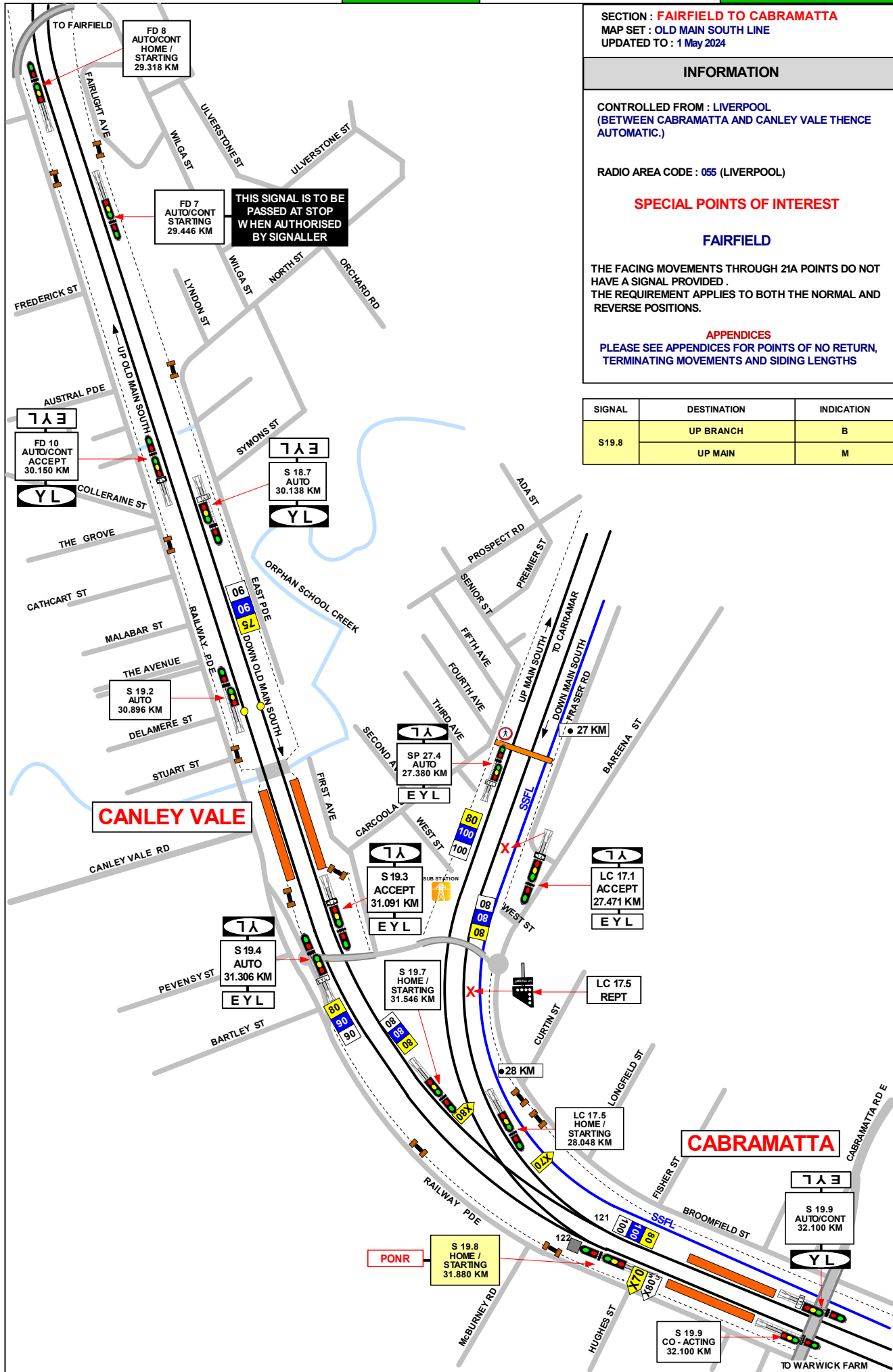
LEVEL

1 IN 100

1 IN 122

LEVEL





SECTION : **FAIRFIELD TO CABRAMATTA**  
 MAP SET : **OLD MAIN SOUTH LINE**  
 UPDATED TO : 1 May 2024

**INFORMATION**

CONTROLLED FROM : **LIVERPOOL**  
 (BETWEEN CABRAMATTA AND CANLEY VALE THENCE AUTOMATIC.)

RADIO AREA CODE : 065 (LIVERPOOL)

**SPECIAL POINTS OF INTEREST**

**FAIRFIELD**

THE FACING MOVEMENTS THROUGH 21A POINTS DO NOT HAVE A SIGNAL PROVIDED .  
 THE REQUIREMENT APPLIES TO BOTH THE NORMAL AND REVERSE POSITIONS.

**APPENDICES**

PLEASE SEE APPENDICES FOR POINTS OF NO RETURN, TERMINATING MOVEMENTS AND SIDING LENGTHS

SIGNAL	DESTINATION	INDICATION
S19.8	UP BRANCH	B
	UP MAIN	M

