

DRIVERS ROUTE KNOWLEDGE DIAGRAMS

MAIN NORTH LINE

STRATHFIELD
NORTH STRATHFIELD
CONCORD WEST
RHODES
MEADOWBANK
WEST RYDE
DENISTONE
EASTWOOD
EPPING
CHELTENHAM
BEECROFT
PENNANT HILLS
THORNLEIGH
NORMANHURST
HORNSBY
ASQUITH
MOUNT COLAH
MOUNT KURING-GAI
BEROWRA

Effective Date: July 2026

Version: 5.25

Explanatory Notes:

Navigate to your area of interest via the station index or by using links created in Adobe bookmarks.

This document is approved for **route knowledge only**.

Do not use these diagrams for any safety related purpose without validating the information against a controlled source or in the field.

Information in these diagrams is uncontrolled.

Please report any updates to gis.support@transport.nsw.gov.au



Copyright: Sydney Trains

Ownership: Location Services

Location: CM Record No.D2015/577

TO BURWOOD

GRADIENT

1 IN 1320

1 IN 100

E

1 IN 70

E

1 IN 943

SECTION : STRATHFIELD AND HOMEBUSH TO NORTH STRATHFIELD
MAP SET : STRATHFIELD TO COWAN
 UPDATED TO : 7 July 2026

INFORMATION

CONTROLLED FROM : RAIL OPERATIONS CENTRE / HOMEBUSH CONTROL CENTRE

RADIO AREA CODE : 036 (STRATHFIELD)
 018 (NTH STRATHFIELD)

SPECIAL POINTS OF INTEREST

STRATHFIELD

A "SHUNTING LIMIT BOARD" IS LOCATED NEXT TO THE UP MAIN LINE OFF THE COUNTRY END OF No. 2 PLATFORM. THIS BOARD APPLIES TO TRAINS SHUNTING IN THE DOWN DIRECTION ON THE UP MAIN LINE.

HOMEBUSH

AT HOMEBUSH, THE PLATFORMS ARE NUMBERED FROM 2 TO 6 AS PASSENGER TRAINS DO NOT STOP WHERE PLATFORM No. 1 SHOULD BE.

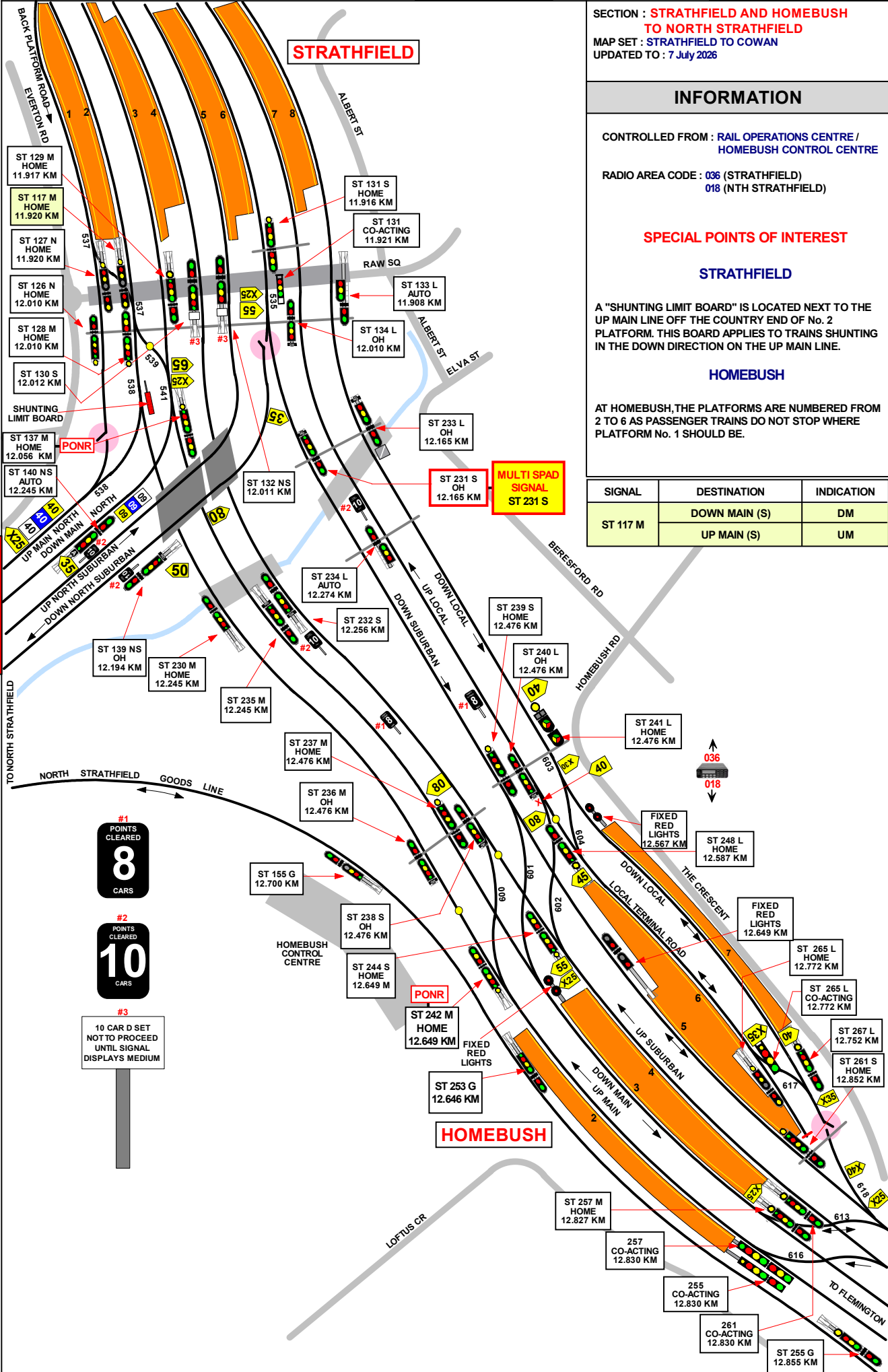
SIGNAL	DESTINATION	INDICATION
ST 117 M	DOWN MAIN (S)	DM
	UP MAIN (S)	UM

STRATHFIELD

HOMEBUSH

JOINS MAP MN 02

JOINS MAP MS 13

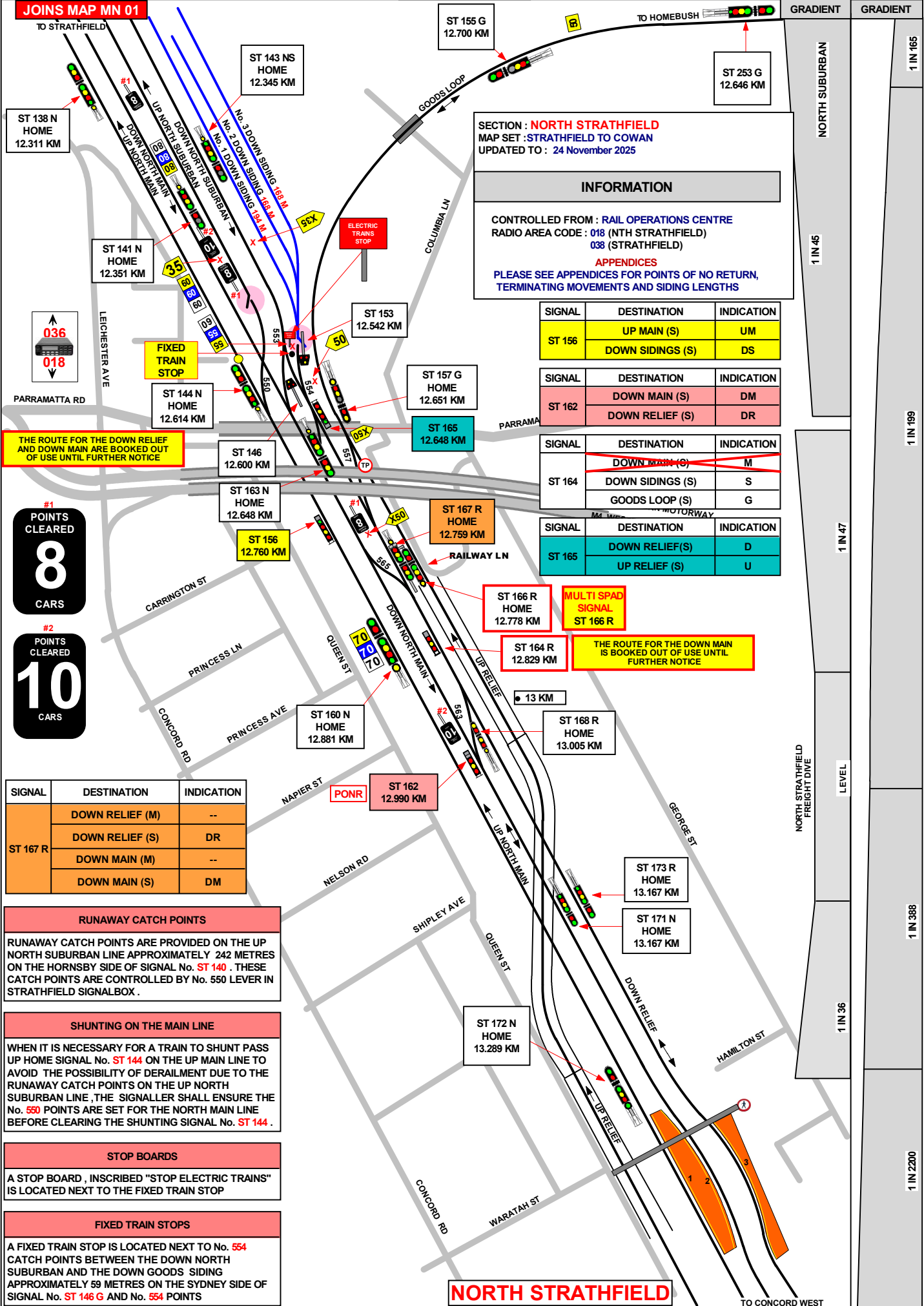


#1 POINTS CLEARED
8
 CARS

#2 POINTS CLEARED
10
 CARS

#3
 10 CAR D SET NOT TO PROCEED UNTIL SIGNAL DISPLAYS MEDIUM

JOINS MAP MN 01



SECTION : NORTH STRATHFIELD
MAP SET : STRATHFIELD TO COWAN
 UPDATED TO : 24 November 2025

INFORMATION

CONTROLLED FROM : RAIL OPERATIONS CENTRE
 RADIO AREA CODE : 018 (NTH STRATHFIELD)
 038 (STRATHFIELD)

APPENDICES
 PLEASE SEE APPENDICES FOR POINTS OF NO RETURN,
 TERMINATING MOVEMENTS AND SIDING LENGTHS

SIGNAL	DESTINATION	INDICATION
ST 156	UP MAIN (S)	UM
	DOWN SIDINGS (S)	DS

SIGNAL	DESTINATION	INDICATION
ST 162	DOWN MAIN (S)	DM
	DOWN RELIEF (S)	DR

SIGNAL	DESTINATION	INDICATION
ST 164	DOWN MAIN (S)	M
	DOWN SIDINGS (S)	S
	GOODS LOOP (S)	G

SIGNAL	DESTINATION	INDICATION
ST 165	DOWN RELIEF(S)	D
	UP RELIEF (S)	U

THE ROUTE FOR THE DOWN RELIEF AND DOWN MAIN ARE BOOKED OUT OF USE UNTIL FURTHER NOTICE

MULTI SPAD SIGNAL ST 166 R

THE ROUTE FOR THE DOWN MAIN IS BOOKED OUT OF USE UNTIL FURTHER NOTICE

#1 POINTS CLEARED
8
 CARS

#2 POINTS CLEARED
10
 CARS

SIGNAL	DESTINATION	INDICATION
ST 167 R	DOWN RELIEF (M)	--
	DOWN RELIEF (S)	DR
	DOWN MAIN (M)	--
	DOWN MAIN (S)	DM

RUNAWAY CATCH POINTS

RUNAWAY CATCH POINTS ARE PROVIDED ON THE UP NORTH SUBURBAN LINE APPROXIMATELY 242 METRES ON THE HORNSBY SIDE OF SIGNAL No. ST 140 . THESE CATCH POINTS ARE CONTROLLED BY No. 550 LEVER IN STRATHFIELD SIGNALBOX .

SHUNTING ON THE MAIN LINE

WHEN IT IS NECESSARY FOR A TRAIN TO SHUNT PASS UP HOME SIGNAL No. ST 144 ON THE UP MAIN LINE TO AVOID THE POSSIBILITY OF DERAILMENT DUE TO THE RUNAWAY CATCH POINTS ON THE UP NORTH SUBURBAN LINE, THE SIGNALLER SHALL ENSURE THE No. 550 POINTS ARE SET FOR THE NORTH MAIN LINE BEFORE CLEARING THE SHUNTING SIGNAL No. ST 144 .

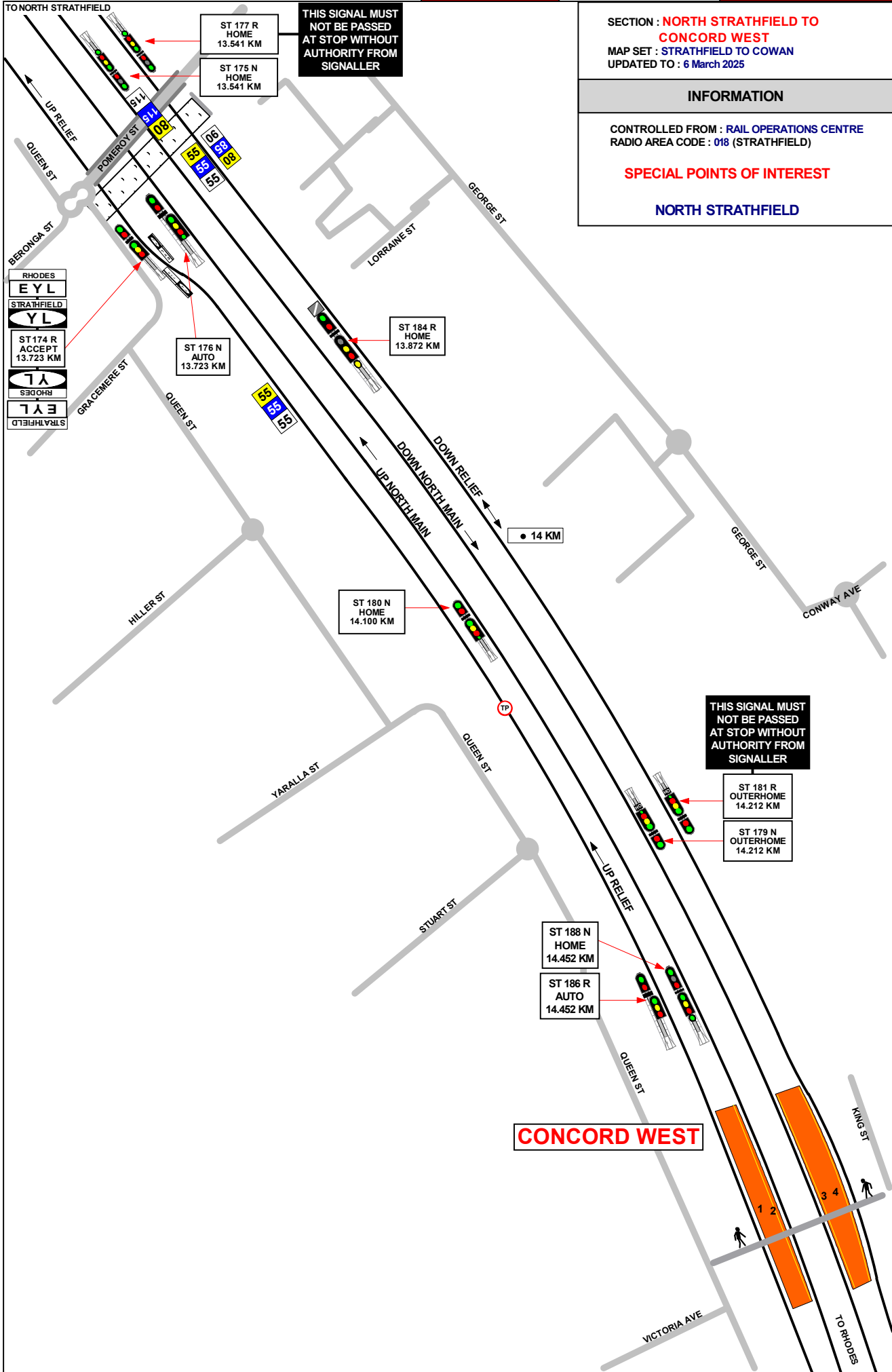
STOP BOARDS

A STOP BOARD , INSCRIBED "STOP ELECTRIC TRAINS" IS LOCATED NEXT TO THE FIXED TRAIN STOP

FIXED TRAIN STOPS

A FIXED TRAIN STOP IS LOCATED NEXT TO No. 554 CATCH POINTS BETWEEN THE DOWN NORTH SUBURBAN AND THE DOWN GOODS SIDING APPROXIMATELY 59 METRES ON THE SYDNEY SIDE OF SIGNAL No. ST 146 G AND No. 554 POINTS

NORTH STRATHFIELD



THIS SIGNAL MUST NOT BE PASSED AT STOP WITHOUT AUTHORITY FROM SIGNALLER

THIS SIGNAL MUST NOT BE PASSED AT STOP WITHOUT AUTHORITY FROM SIGNALLER

SECTION : NORTH STRATHFIELD TO CONCORD WEST

MAP SET : STRATHFIELD TO COWAN

UPDATED TO : 6 March 2025

INFORMATION

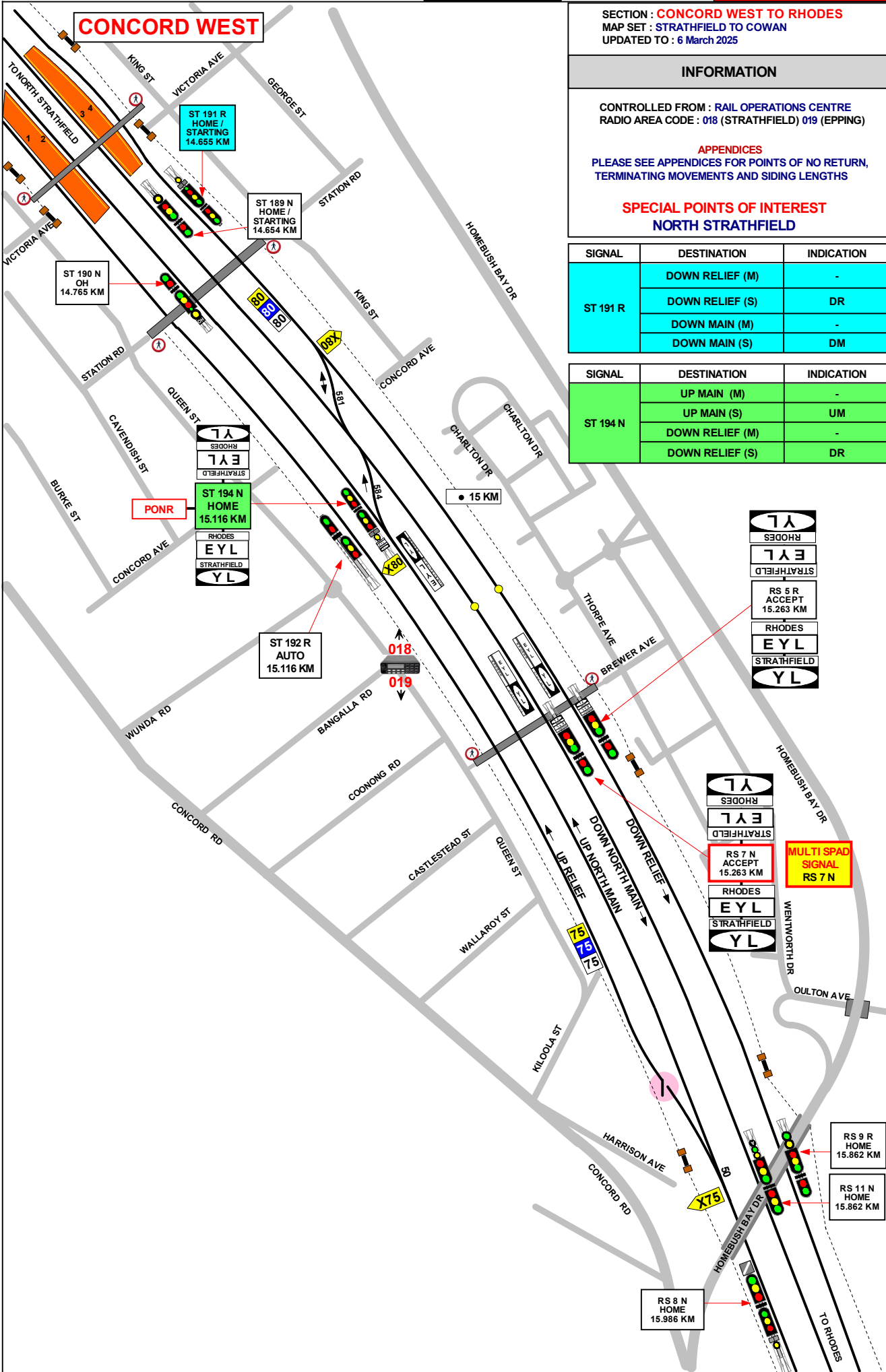
CONTROLLED FROM : RAIL OPERATIONS CENTRE

RADIO AREA CODE : 018 (STRATHFIELD)

SPECIAL POINTS OF INTEREST

NORTH STRATHFIELD

GRADIENT
1 IN 2200
LEVEL
1 IN 560
1 IN 139
1 IN 100
1 IN 139



CONCORD WEST

SECTION : **CONCORD WEST TO RHODES**
 MAP SET : STRATHFIELD TO COWAN
 UPDATED TO : 6 March 2025

GRADIENT

INFORMATION

CONTROLLED FROM : RAIL OPERATIONS CENTRE
 RADIO AREA CODE : 018 (STRATHFIELD) 019 (EPPING)

APPENDICES
 PLEASE SEE APPENDICES FOR POINTS OF NO RETURN,
 TERMINATING MOVEMENTS AND SIDING LENGTHS

SPECIAL POINTS OF INTEREST
NORTH STRATHFIELD

SIGNAL	DESTINATION	INDICATION
ST 191 R	DOWN RELIEF (M)	-
	DOWN RELIEF (S)	DR
	DOWN MAIN (M)	-
	DOWN MAIN (S)	DM

SIGNAL	DESTINATION	INDICATION
ST 194 N	UP MAIN (M)	-
	UP MAIN (S)	UM
	DOWN RELIEF (M)	-
	DOWN RELIEF (S)	DR

1 IN 139

1 IN 161

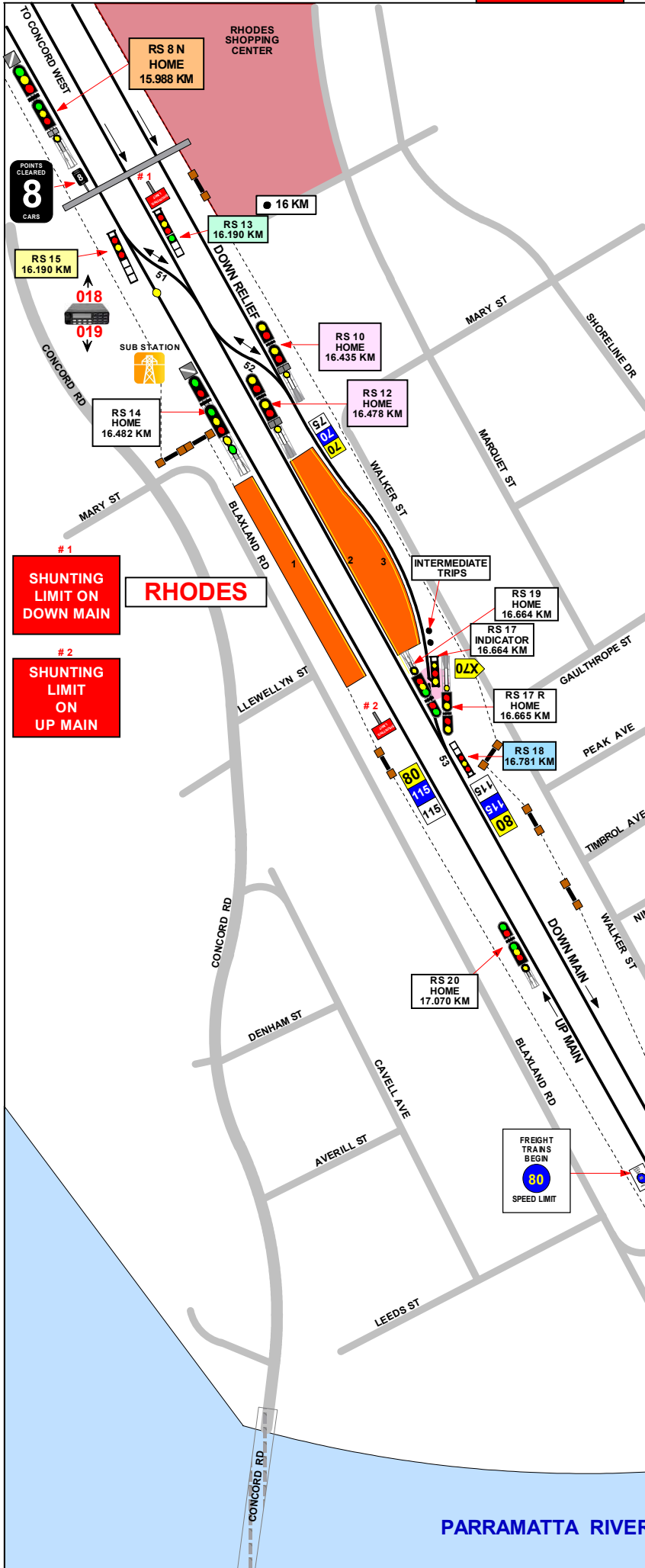
1 IN 510

1 IN 2200

1 IN 135

1 IN 430

1 IN 730



SECTION : **RHODES TO MEADOWBANK**
 MAP SET : **STRATHFIELD TO COWAN**
 UPDATED TO : 6 March 2025

INFORMATION

CONTROLLED FROM : **RAIL OPERATIONS CENTRE**
 RADIO AREA CODE : 018 (STRATHFIELD) 019 (EPPING)

APPENDICES
 PLEASE SEE APPENDICES FOR POINTS OF NO RETURN,
 TERMINATING MOVEMENTS AND SIDING LENGTHS

NLA 300 STRATHFIELD - HORNSBY

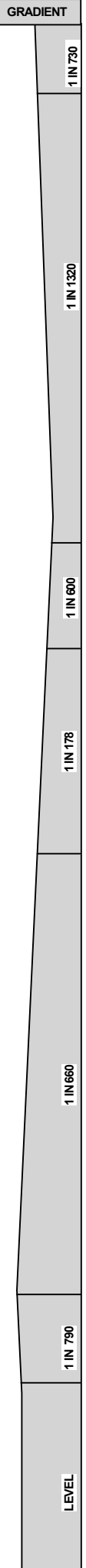
SIGNAL	DESTINATION	INDICATION
RS 15	DOWN RELIEF (S)	R
	DOWN MAIN (S)	D
	UP MAIN (S)	U

SIGNAL	DESTINATION	INDICATION
RS 13	DOWN RELIEF (S)	R
	DOWN MAIN (S)	D

SIGNAL	DESTINATION	INDICATION
RS 10	DOWN MAIN (S)	DM
RS 12	UP MAIN (M)	UM

SIGNAL	DESTINATION	INDICATION
RS 18	DOWN MAIN (S)	DM
	DOWN RELIEF	DR

SIGNAL	DESTINATION	INDICATION
RS 8 N	UP RELIEF (M)	-
	UP RELIEF (S)	UR
	UP MAIN (M)	-
	UP MAIN (S)	UM



SECTION : **MEADOWBANK TO WEST RYDE**
 MAP SET : STRATHFIELD TO COWAN
 UPDATED TO : 16 February 2026

INFORMATION

CONTROLLED FROM : RAIL OPERATIONS CENTRE
 RADIO AREA CODE : 019 (EPPING)

SPECIAL POINTS OF INTEREST

NLA 300 STRATHFIELD - HORNSBY
 REFER TO NLA 300 FOR SPECIAL INSTRUCTIONS

GRADIENT

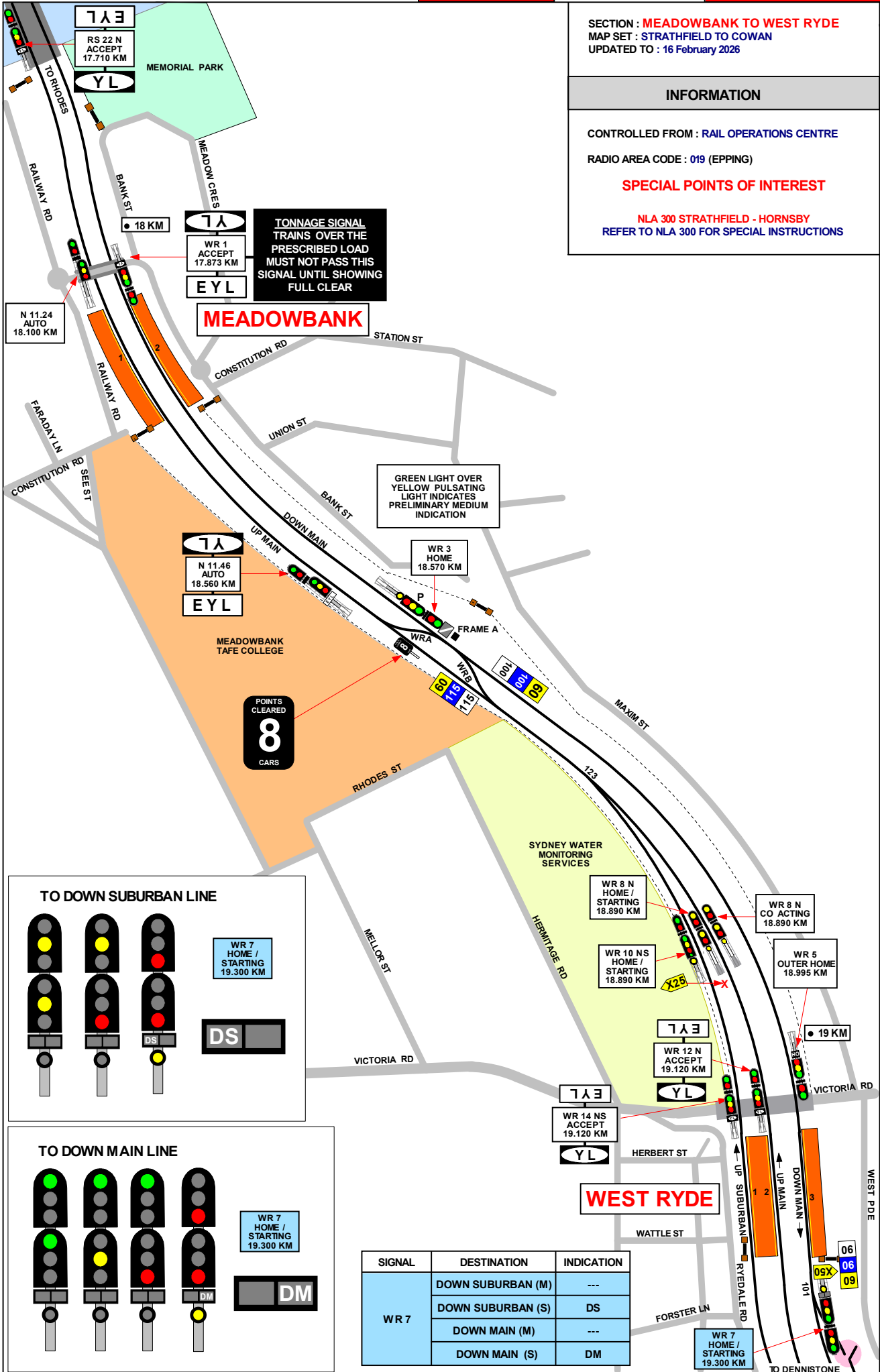
LEVEL

1 IN 330

1 IN 132

1 IN 60

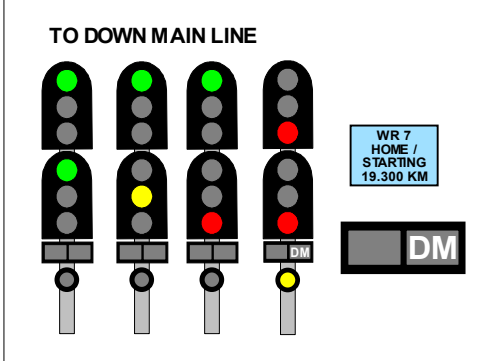
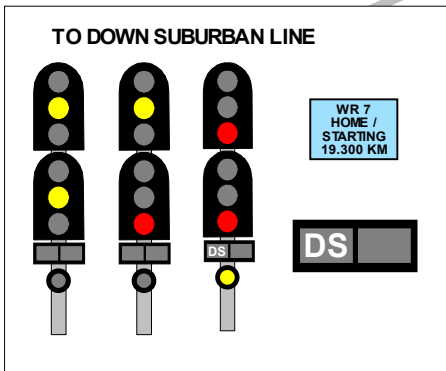
1 IN 330



TONNAGE SIGNAL
 TRAINS OVER THE
 PRESCRIBED LOAD
 MUST NOT PASS THIS
 SIGNAL UNTIL SHOWING
 FULL CLEAR

GREEN LIGHT OVER
 YELLOW PULSATING
 LIGHT INDICATES
 PRELIMINARY MEDIUM
 INDICATION

POINTS
 CLEARED
8
 CARS



SIGNAL	DESTINATION	INDICATION
WR 7	DOWN SUBURBAN (M)	---
	DOWN SUBURBAN (S)	DS
	DOWN MAIN (M)	---
	DOWN MAIN (S)	DM

WEST RYDE

SECTION : WEST RYDE TO DENISTONE
 MAP SET : STRATHFIELD TO COWAN
 UPDATED TO : 6 March 2025

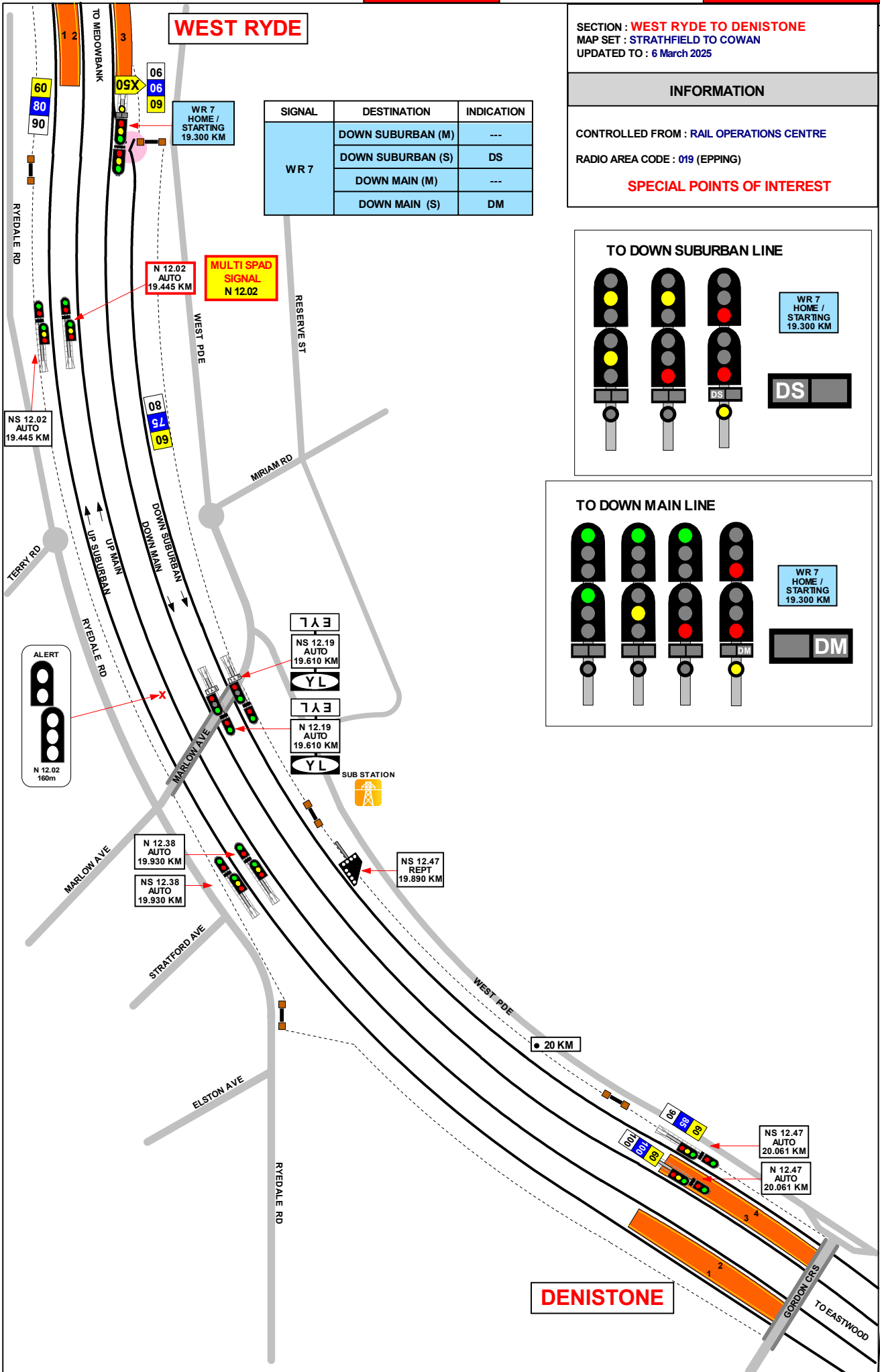
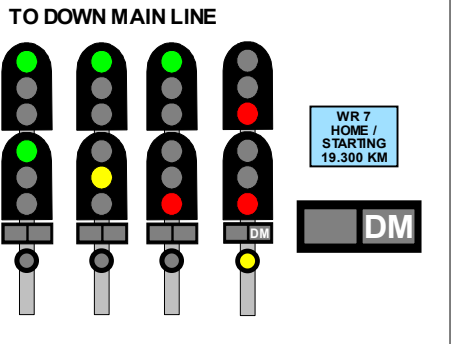
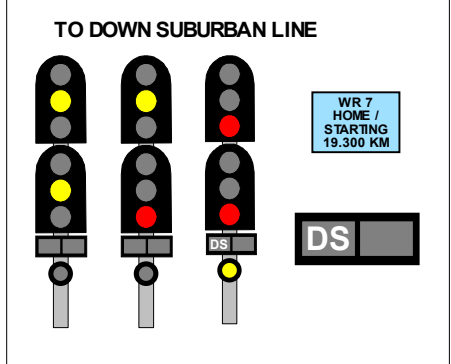
GRADIENT

INFORMATION

CONTROLLED FROM : RAIL OPERATIONS CENTRE
 RADIO AREA CODE : 019 (EPPING)

SPECIAL POINTS OF INTEREST

SIGNAL	DESTINATION	INDICATION
WR 7	DOWN SUBURBAN (M)	---
	DOWN SUBURBAN (S)	DS
	DOWN MAIN (M)	---
	DOWN MAIN (S)	DM



DENISTONE

1 IN 330

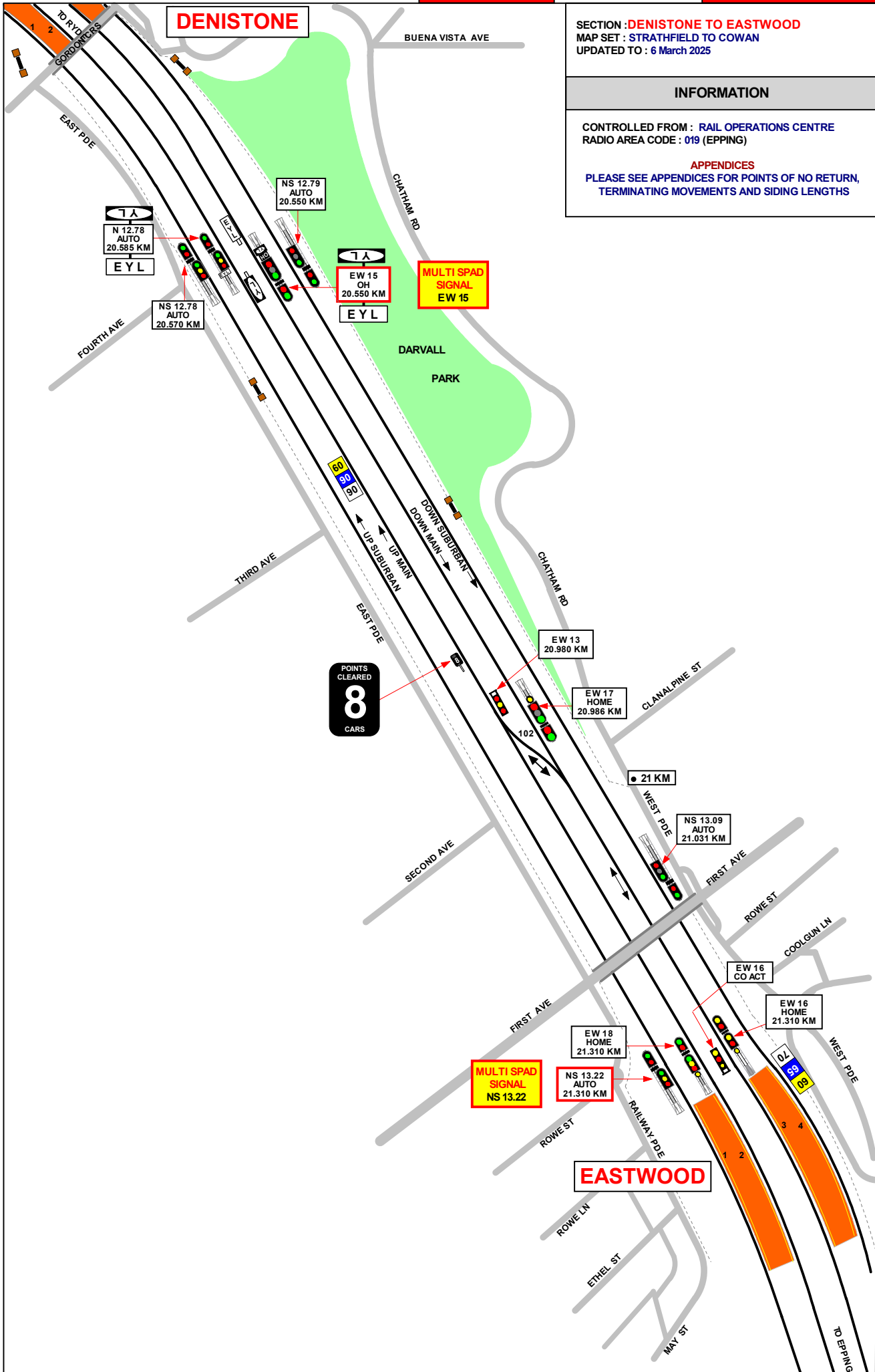
1 IN 40

SECTION : DENISTONE TO EASTWOOD
MAP SET : STRATHFIELD TO COWAN
UPDATED TO : 6 March 2025

INFORMATION

CONTROLLED FROM : RAIL OPERATIONS CENTRE
RADIO AREA CODE : 019 (EPPING)

APPENDICES
PLEASE SEE APPENDICES FOR POINTS OF NO RETURN,
TERMINATING MOVEMENTS AND SIDING LENGTHS



1 IN 40

1 IN 66

1 IN 132

LEVEL

EASTWOOD

SECTION : EASTWOOD TO EPPING
 MAP SET : STRATHFIELD TO COWAN
 UPDATED TO : 15 January 2026

GRADIENT

INFORMATION

CONTROLLED FROM : RAIL OPERATIONS CENTRE
 RADIO AREA CODE : 019 (EPPING)

APPENDICES
 PLEASE SEE APPENDICES FOR POINTS OF NO RETURN,
 TERMINATING MOVEMENTS AND SIDING LENGTHS

SPECIAL POINTS OF INTEREST
 EPPING

OWING TO THE SHARP TURNOUTS, FREIGHT TRAINS MUST NOT TRAVEL VIA No. 105 POINTS IN THE REVERSE POSITION.

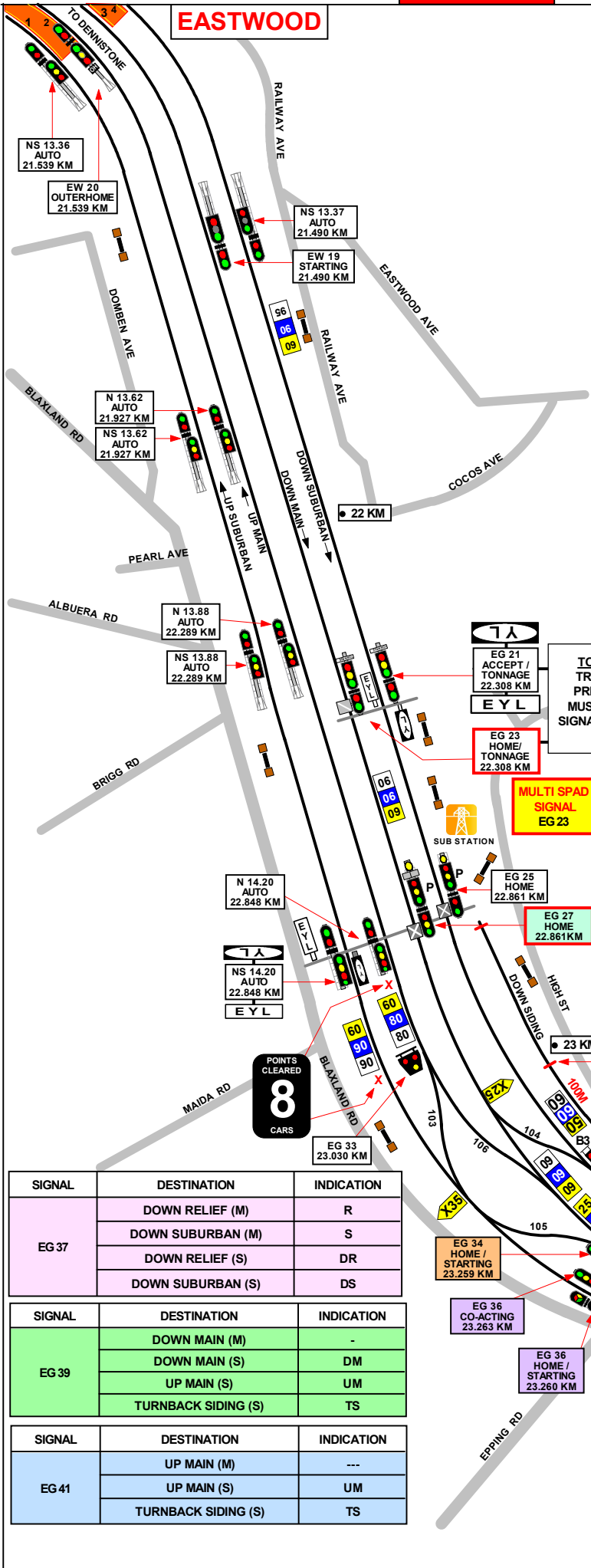
LEVEL

1 IN 75

1 IN 55

1 IN 44

1 IN 75



SIGNAL	DESTINATION	INDICATION
EG 27	DOWN SUBURBAN (M)	-
	DOWN MAIN (M)	-
	DOWN SUBURBAN (S)	DS
	DOWN MAIN (S)	DM

SIGNAL	DESTINATION	INDICATION
EG 34	UP SUBURBAN (M)	-
	UP MAIN (M)	-
	UP SUBURBAN (S)	US
	UP MAIN (S)	UM

SIGNAL	DESTINATION	INDICATION
EG 36 + EG 36 CO-ACTING	UP SUBURBAN (M)	-
	UP MAIN (M)	-
	UP SUBURBAN (S)	US
	UP MAIN (S)	UM

SIGNAL	DESTINATION	INDICATION
EG 37	DOWN RELIEF (M)	R
	DOWN SUBURBAN (M)	S
	DOWN RELIEF (S)	DR
	DOWN SUBURBAN (S)	DS

SIGNAL	DESTINATION	INDICATION
EG 39	DOWN MAIN (M)	-
	DOWN MAIN (S)	DM
	UP MAIN (S)	UM
	TURNBACK SIDING (S)	TS

SIGNAL	DESTINATION	INDICATION
EG 41	UP MAIN (M)	---
	UP MAIN (S)	UM
	TURNBACK SIDING (S)	TS

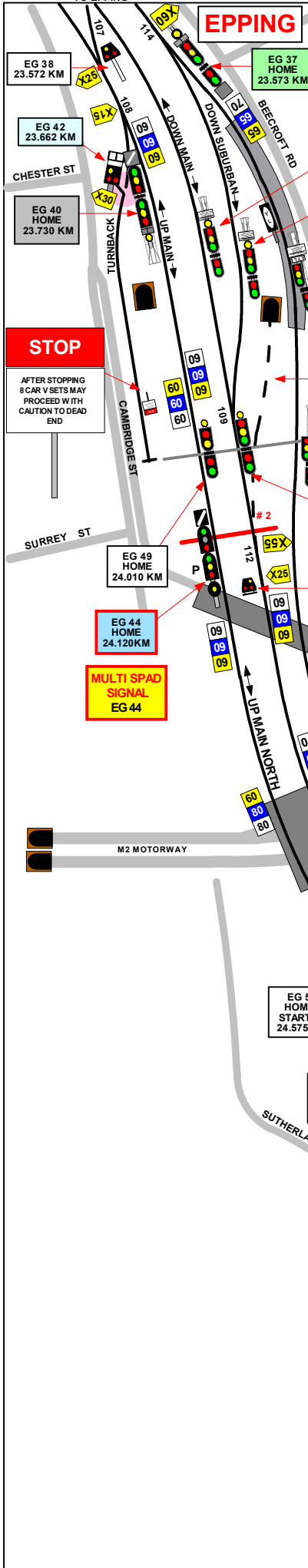
TONNAGE SIGNAL
 TRAINS OVER THE
 PRESCRIBED LOAD
 MUST NOT PASS THIS
 SIGNAL UNTIL SHOWING
 FULL CLEAR

MULTI SPAD
 SIGNAL
 EG 23

MULTI SPAD
 SIGNAL
 EG 27

POINTS
 CLEARED
 8
 CARS

EPPING



SIGNAL	DESTINATION	INDICATION
EG 37	DOWN RELIEF (M)	R
	DOWN SUBURBAN (M)	S
	DOWN RELIEF (S)	DR
	DOWN SUBURBAN (S)	DS

EG 45 HOME TONNAGE 23.745 KM
 EG 43 HOME TONNAGE 23.759 KM
 R 14.77 AUTO TONNAGE 23.748 KM
 Tonnage Signal
 TRAINS OVER THE PRESCRIBED LOAD MUST NOT PASS THIS SIGNAL UNTIL SHOWING FULL CLEAR

Maintenance Access Metro

SECTION : EPPING TO CHELTENHAM
 MAP SET : STRATHFIELD TO BEROWRA
 UPDATED TO : 15 January 2026

INFORMATION

CONTROLLED FROM : RAIL OPERATIONS CENTRE
 RADIO AREA CODE : 019 (EPPING)

APPENDICES
 PLEASE SEE APPENDICES FOR POINTS OF NO RETURN, TERMINATING MOVEMENTS AND SIDING LENGTHS

SIGNAL	DESTINATION	INDICATION
EG 40	UP MAIN (M)	-
	DOWN MAIN (M)	-
	UP MAIN (S)	UM
	DOWN MAIN (S)	DM

SIGNAL	DESTINATION	INDICATION
EG 42	UP MAIN (S)	UM
	DOWN MAIN (S)	DM

2 POINTS 112 BOOKED OUT OF USE CLIPPED, SPIKED & XL LOCKED IN NORMAL POSITION
 # SIGNALS EG 56 & EG 56 REPEATER BOOKED OUT OF USE

SIGNAL	DESTINATION	INDICATION
EG 44	UP MAIN (M)	-
	UP MAIN (S)	-

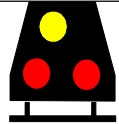
SIGNAL	DESTINATION	INDICATION
EG 46	DOWN MAIN (S)	-

SIGNAL	DESTINATION	INDICATION
EG 53	DOWN MAIN (M)	-
	DOWN MAIN (S)	-

SIGNAL	DESTINATION	INDICATION
EG 56	UP MAIN (S)	UM
	DOWN MAIN (S)	DM

WHEN THIS SIGNAL IS AT STOP WAIT ONE MINUTE AND PROCEED CAUTIOUSLY TO NEXT SIGNAL

THIS SIGNAL MUST NOT BE PASSED AT STOP WITHOUT AUTHORITY FROM SIGNALLER



CHELTENHAM

GRADIENT

1 IN 75

LEVEL

1 IN 40

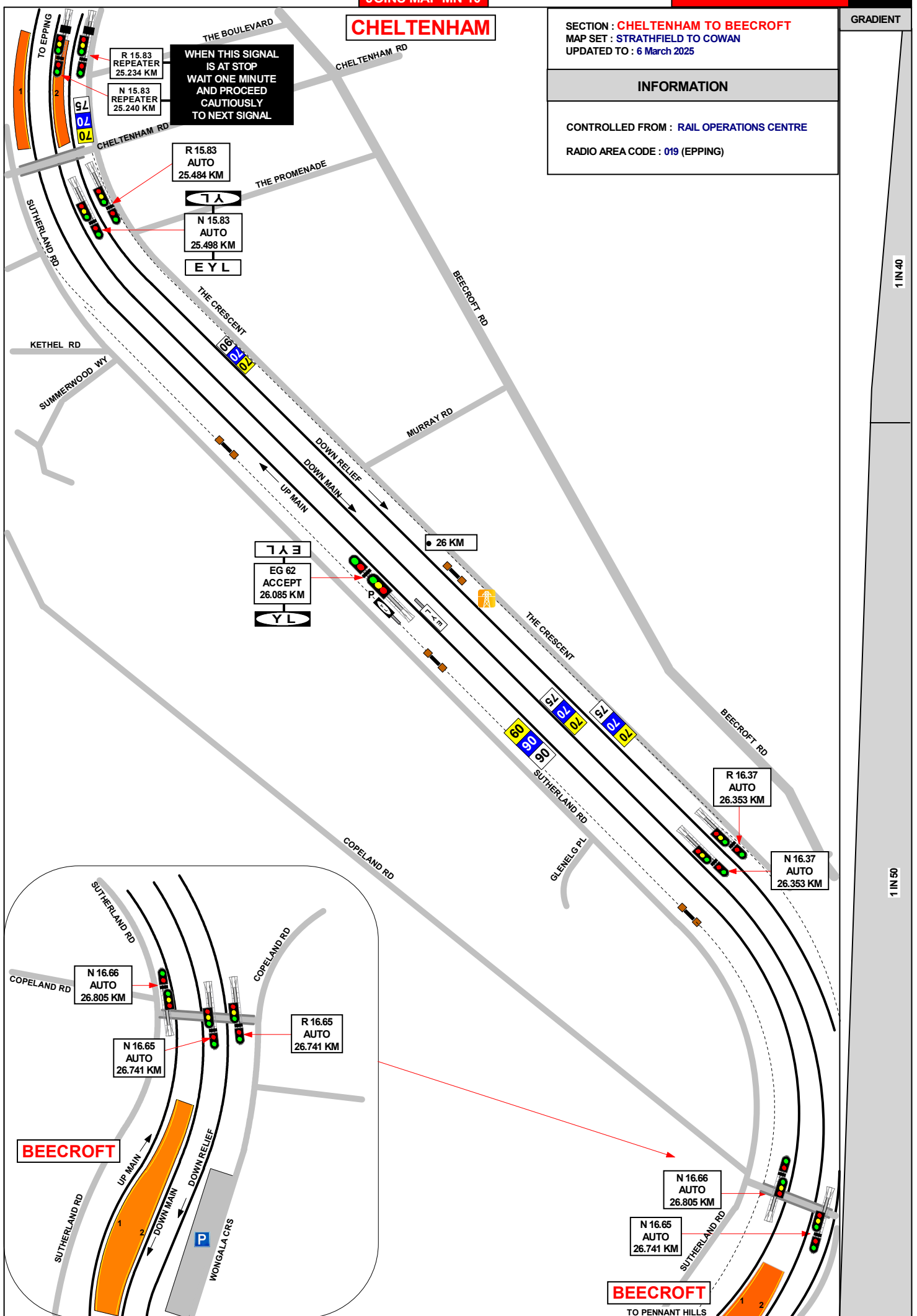
CHELTENHAM

SECTION : **CHELTENHAM TO BEECROFT**
MAP SET : **STRATHFIELD TO COWAN**
UPDATED TO : 6 March 2025

GRADIENT

INFORMATION

CONTROLLED FROM : **RAIL OPERATIONS CENTRE**
RADIO AREA CODE : **019 (EPPING)**



**WHEN THIS SIGNAL IS AT STOP
WAIT ONE MINUTE
AND PROCEED
CAUTIOUSLY
TO NEXT SIGNAL**

R 15.83
REPEATER
25.234 KM
N 15.83
REPEATER
25.240 KM

R 15.83
AUTO
25.484 KM

N 15.83
AUTO
25.498 KM

EYL

EYL
EG 62
ACCEPT
26.085 KM
YL

R 16.37
AUTO
26.353 KM

N 16.37
AUTO
26.353 KM

N 16.66
AUTO
26.805 KM

N 16.65
AUTO
26.741 KM

R 16.65
AUTO
26.741 KM

N 16.66
AUTO
26.805 KM

N 16.65
AUTO
26.741 KM

BEECROFT
TO PENNANT HILLS

SECTION : **BEECROFT TO PENNANT HILLS**
MAP SET : STRATHFIELD TO COWAN
UPDATED TO : 6 March 2025

INFORMATION

CONTROLLED FROM : **RAIL OPERATIONS CENTRE**
RADIO AREA CODE : **019 (EPPING)**

GRADIENT

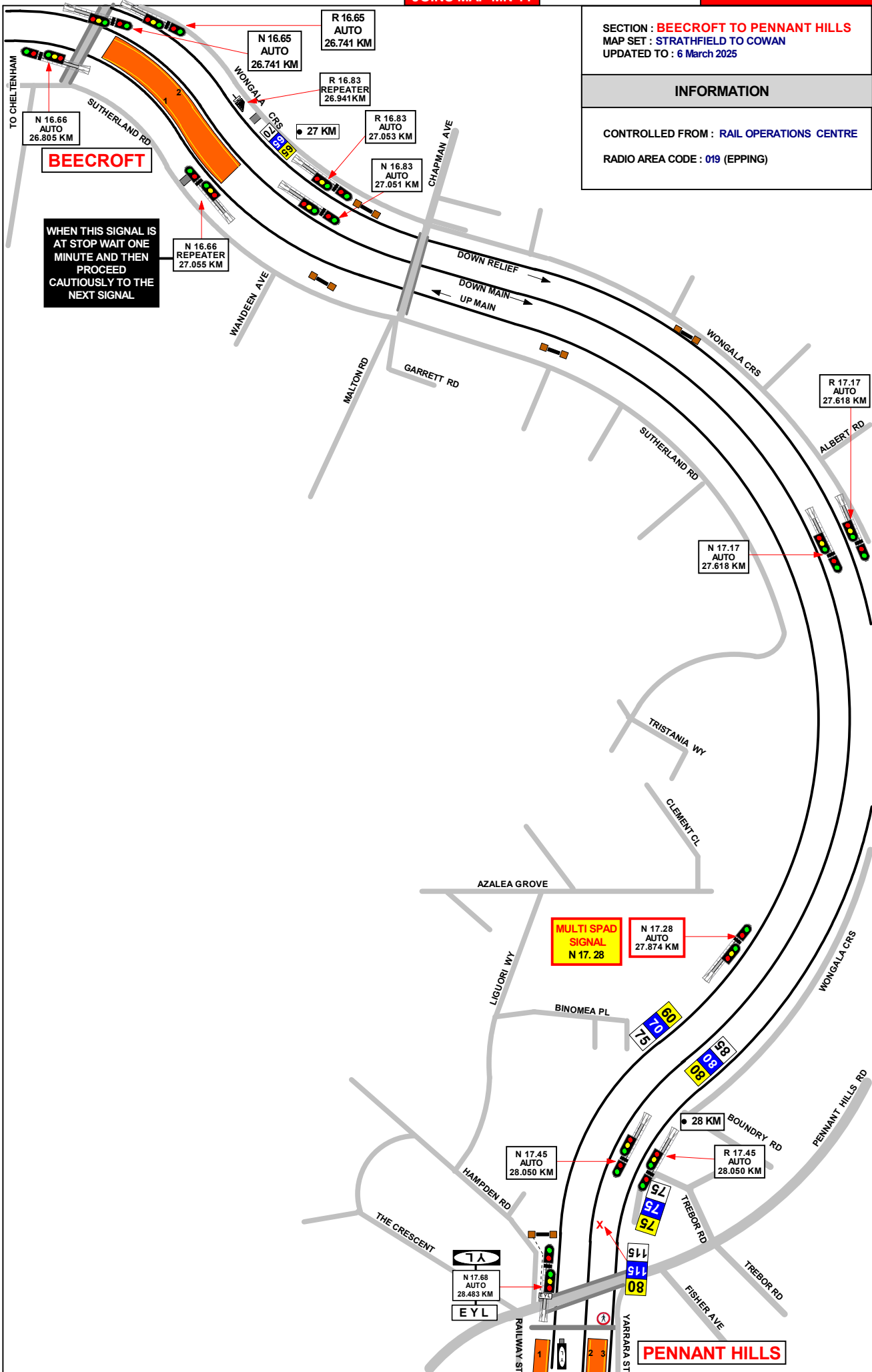
1 IN 50

1 IN 75

1 IN 55

1 IN 44

LEVEL



WHEN THIS SIGNAL IS AT STOP WAIT ONE MINUTE AND THEN PROCEED CAUTIOUSLY TO THE NEXT SIGNAL

MULTI SPAD SIGNAL
N 17.28

SECTION : PENNANT HILLS TO THORNLEIGH
MAP SET : STRATHFIELD TO COWAN
UPDATED TO : 6 March 2025

GRADIENT
1 IN 44
LEVEL
1 IN 220
1 IN 163
1 IN 200
LEVEL
1 IN 66

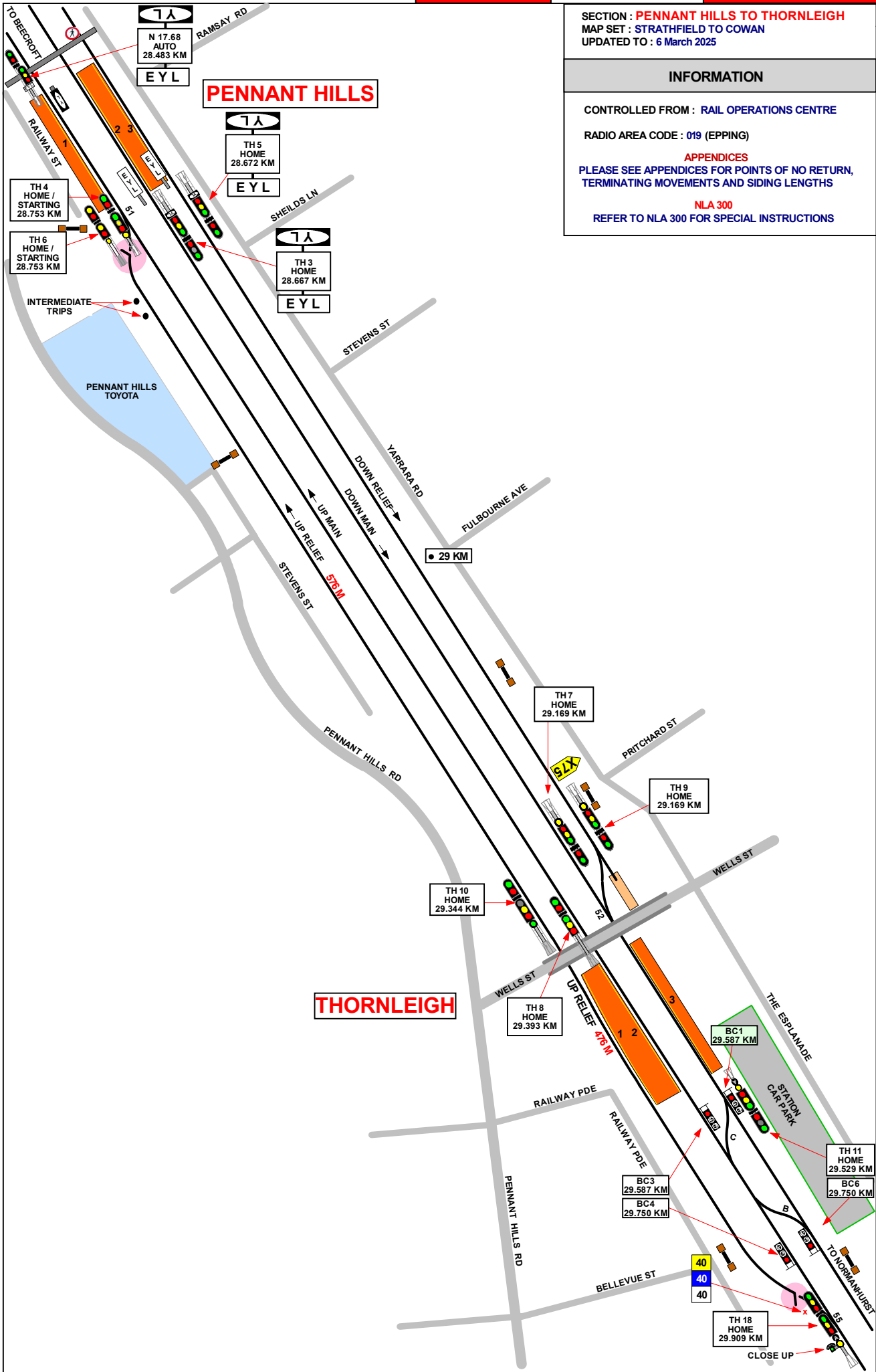
INFORMATION

CONTROLLED FROM : RAIL OPERATIONS CENTRE

RADIO AREA CODE : 019 (EPPING)

APPENDICES
PLEASE SEE APPENDICES FOR POINTS OF NO RETURN,
TERMINATING MOVEMENTS AND SIDING LENGTHS

NLA 300
REFER TO NLA 300 FOR SPECIAL INSTRUCTIONS



SECTION : THORNLEIGH TO NORMANHURST
MAP SET : STRATHFIELD TO COWAN
UPDATED TO : 6 March 2025

INFORMATION

CONTROLLED FROM : RAIL OPERATIONS CENTRE
RADIO AREA CODE : 019 (EPPING)
017 (HORNSBY)

NLA 300
REFER TO NLA 300 FOR SPECIAL INSTRUCTIONS

THORNLEIGH

GRADIENT

1 IN 200
LEVEL
1 IN 66
1 IN 50
1 IN 75
1 IN 132

WARNING
PANTOGRAPH CONDITION MONITORING SYSTEM
NO MAINTENANCE WORK IN THIS AREA
WITHOUT APPROVAL FROM CONDITION MONITORING OPERATIONS PH 9379 4000

PANTOGRAPH MONITORING SYSTEM
47.898 KM

MULTI SPAD SIGNAL
TH 20

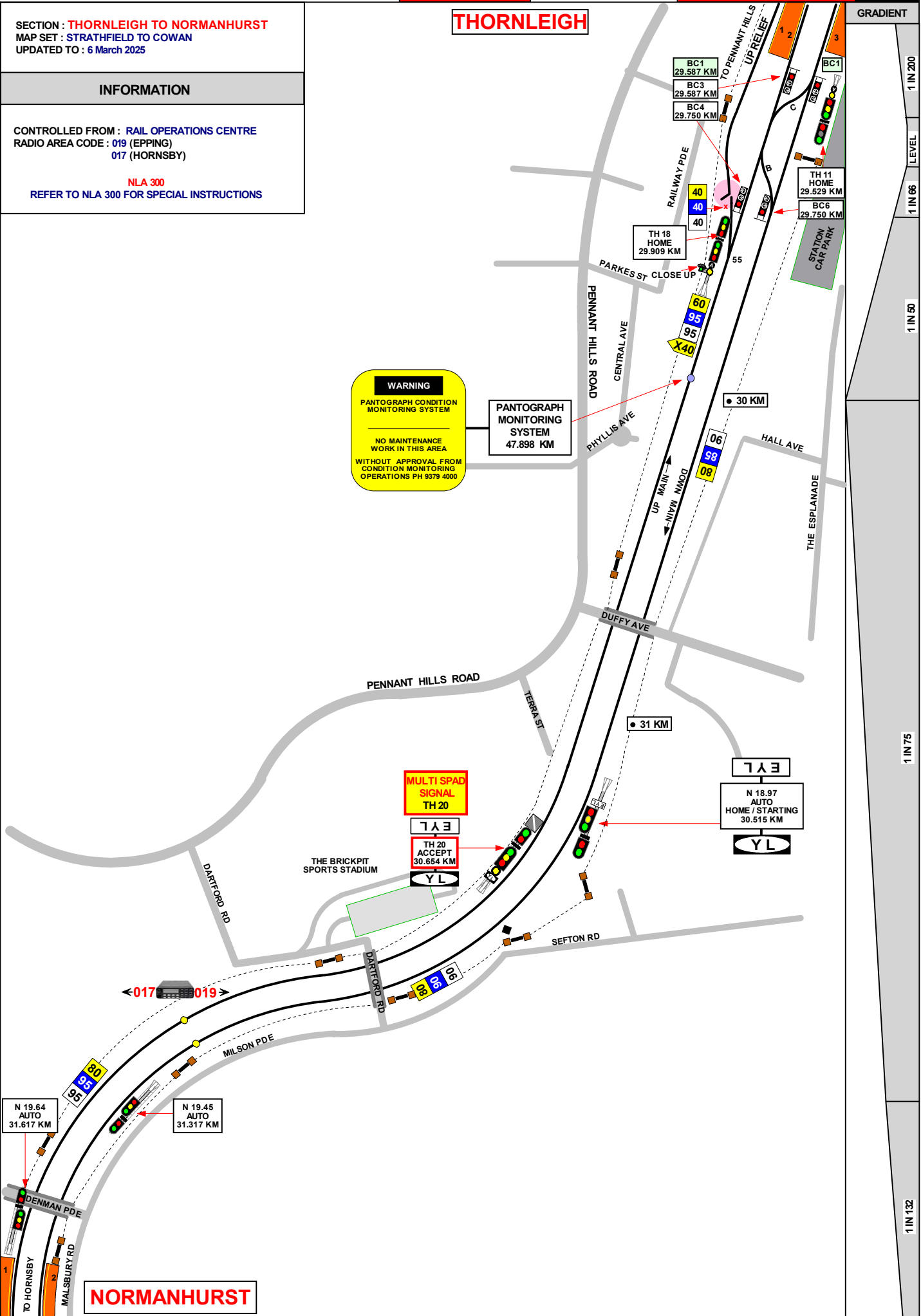
E Y L
TH 20 ACCEPT
30.654 KM
Y L

E Y L
N 18.97 AUTO HOME / STARTING
30.515 KM
Y L

N 19.64 AUTO
31.617 KM

N 19.45 AUTO
31.317 KM

NORMANHURST



SECTION : **NORMANHURST TO HORNSBY**
 MAP SET : **CENTRAL TO HORNSBY VIA SHORE**
 PAGE: 1 OF 5
 UPDATED TO : 6 March 2025

INFORMATION

CONTROLLED FROM : **RAIL OPERATIONS CENTRE**
 RADIO AREA CODE : 019 (EPPING)
 017 (HORNSBY)

APPENDICES

PLEASE SEE APPENDICES FOR POINTS OF NO RETURN, TERMINATING MOVEMENTS AND SIDING LENGTHS

NORMANHURST

TONNAGE SIGNAL TRAINS OF OVER PRESCRIBED LOAD TO WAIT UNTIL SIGNAL IS AT FULL CLEAR

N 20.02 AUTO
32.197 KM

HY 13 ACCEPT
32.051 KM
EYL

HY 17 HOME
32.500 KM

SIGNAL	DESTINATION	INDICATION
HY 21	DOWN MAIN (M)	-
HY 27	DOWN MAIN (S)	4
	UP MAIN (S)	3
	DOWN SHORE (S)	2
	UP SHORE (S)	1

SIGNAL	DESTINATION	INDICATION
HY 17	DOWN RELIEF (M)	R
	DOWN RELIEF (S)	DR
	DOWN MAIN (M)	M
	DOWN MAIN (S)	DM

SIGNAL	DESTINATION	INDICATION
HY 25	DOWN MAIN (M)	-
	DOWN MAIN (S)	4
	UP MAIN (M)	3
	UP MAIN (S)	3
	DOWN SHORE (M)	2
	DOWN SHORE (S)	2
	UP SHORE (M)	1
UP SHORE (S)	1	

MULTI SPAD SIGNAL HY 17
 MULTI SPAD SIGNAL HY 25
 MULTI SPAD SIGNAL HY 31
 MULTI SPAD SIGNAL HY 35

JOINS MAP NS 20

NORTH SHORE GRADIENT

WAITARA

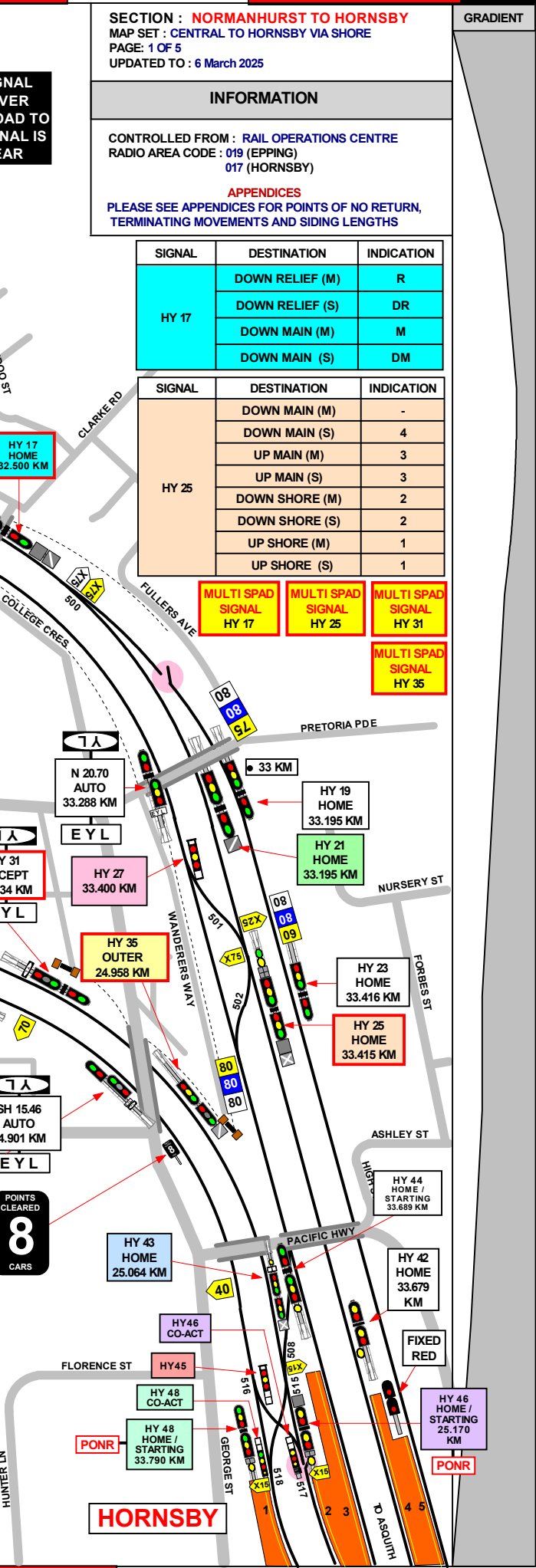
SIGNAL	DESTINATION	INDICATION
HY 35	DOWN SHORE (M)	-
HY 43	DOWN SHORE (M)	-
	DOWN SHORE (S)	2
	UP SHORE (M)	-
	UP SHORE (S)	1
HY 45	DOWN SHORE (M)	2
	UP SHORE (M)	1

POINTS CLEARED
8
GARS

HORNSBY

1 IN 604
1 IN 266
1 IN 220
1 IN 327
1 IN 340
1 IN 536
1 IN 413

SIGNAL	DESTINATION	INDICATION	INDICATOR
HY 46	UP SHORE (M)	S	S
	UP SHORE (S)	US	S
	UP MAIN (M)	M	M
	UP MAIN (S)	UM	M
HY 48	UP SHORE (M)	-	-
	UP SHORE (S)	US	S
	UP MAIN (M)	-	-
	UP MAIN (S)	UM	M



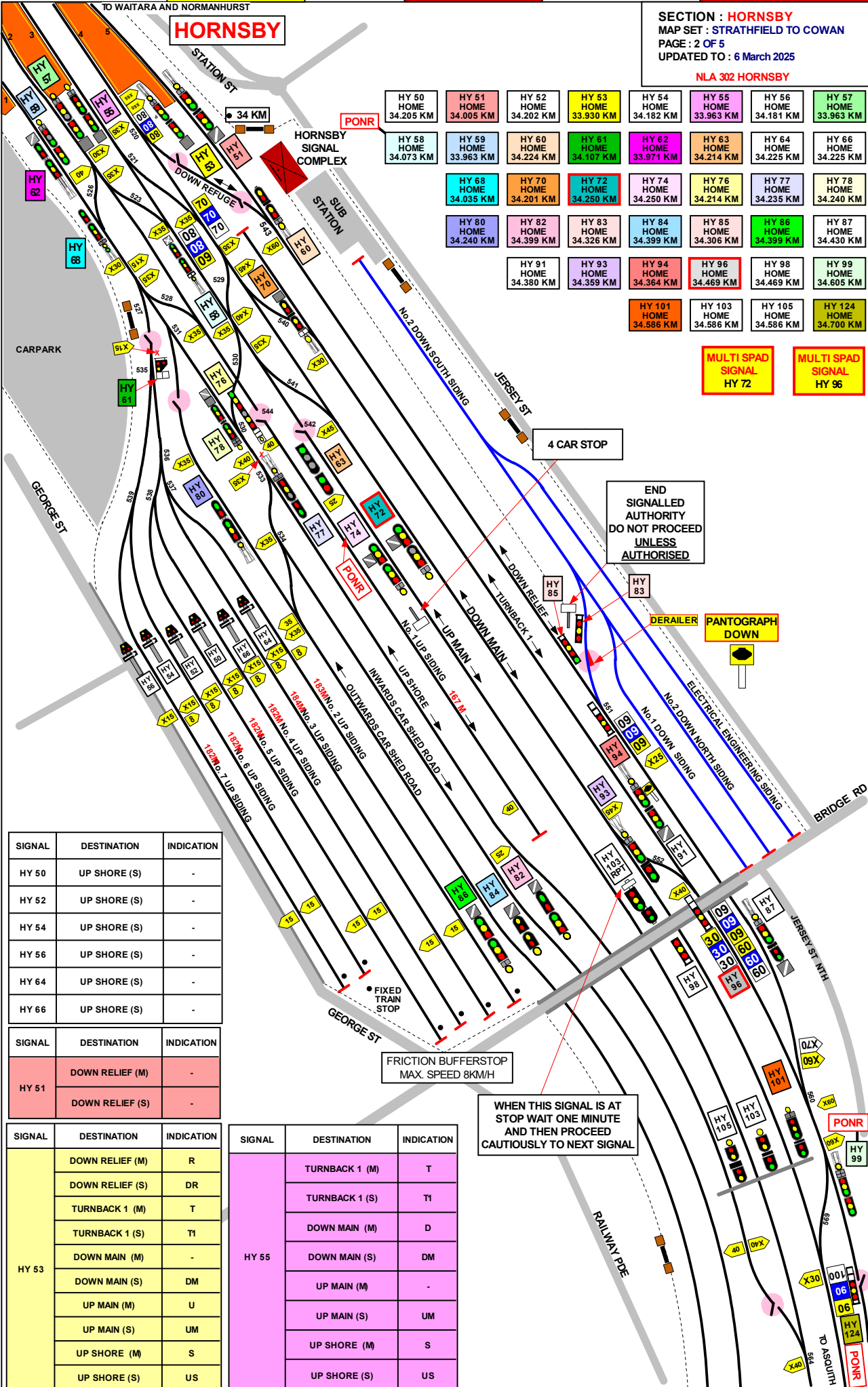
SECTION : HORNSBY
 MAP SET : STRATHFIELD TO COWAN
 PAGE : 2 OF 5
 UPDATED TO : 6 March 2025

NLA 302 HORNSBY

HY 50 HOME 34.205 KM	HY 51 HOME 34.005 KM	HY 52 HOME 34.202 KM	HY 53 HOME 33.930 KM	HY 54 HOME 34.182 KM	HY 55 HOME 33.963 KM	HY 56 HOME 34.181 KM	HY 57 HOME 33.963 KM
HY 58 HOME 34.073 KM	HY 59 HOME 33.963 KM	HY 60 HOME 34.224 KM	HY 61 HOME 34.107 KM	HY 62 HOME 33.971 KM	HY 63 HOME 34.214 KM	HY 64 HOME 34.225 KM	HY 66 HOME 34.225 KM
HY 68 HOME 34.035 KM	HY 70 HOME 34.201 KM	HY 72 HOME 34.250 KM	HY 74 HOME 34.250 KM	HY 76 HOME 34.214 KM	HY 77 HOME 34.235 KM	HY 78 HOME 34.240 KM	
HY 80 HOME 34.240 KM	HY 82 HOME 34.399 KM	HY 83 HOME 34.326 KM	HY 84 HOME 34.399 KM	HY 85 HOME 34.306 KM	HY 86 HOME 34.399 KM	HY 87 HOME 34.430 KM	
HY 91 HOME 34.380 KM	HY 93 HOME 34.359 KM	HY 94 HOME 34.364 KM	HY 96 HOME 34.469 KM	HY 98 HOME 34.469 KM	HY 99 HOME 34.605 KM		
	HY 101 HOME 34.586 KM	HY 103 HOME 34.586 KM	HY 105 HOME 34.586 KM	HY 124 HOME 34.700 KM			

MULTI SPAD SIGNAL
HY 72

MULTI SPAD SIGNAL
HY 96



SIGNAL	DESTINATION	INDICATION
HY 50	UP SHORE (S)	-
HY 52	UP SHORE (S)	-
HY 54	UP SHORE (S)	-
HY 56	UP SHORE (S)	-
HY 64	UP SHORE (S)	-
HY 66	UP SHORE (S)	-

SIGNAL	DESTINATION	INDICATION
HY 51	DOWN RELIEF (M)	-
	DOWN RELIEF (S)	-

SIGNAL	DESTINATION	INDICATION
HY 53	DOWN RELIEF (M)	R
	DOWN RELIEF (S)	DR
	TURNBACK 1 (M)	T
	TURNBACK 1 (S)	T1
	DOWN MAIN (M)	-
	DOWN MAIN (S)	DM
	UP MAIN (M)	U
	UP MAIN (S)	UM
HY 55	UP SHORE (M)	S
	UP SHORE (S)	US

SIGNAL	DESTINATION	INDICATION
HY 55	TURNBACK 1 (M)	T
	TURNBACK 1 (S)	T1
	DOWN MAIN (M)	D
	DOWN MAIN (S)	DM
	UP MAIN (M)	-
	UP MAIN (S)	UM
	UP SHORE (M)	S
	UP SHORE (S)	US

WHEN THIS SIGNAL IS AT STOP WAIT ONE MINUTE AND THEN PROCEED CAUTIOUSLY TO NEXT SIGNAL

FIXED TRAIN STOP
 FRICTION BUFFERSTOP
 MAX. SPEED 8KM/H

END SIGNALLED AUTHORITY DO NOT PROCEED UNLESS AUTHORISED

DERAILER
 PANTOGRAPH DOWN

4 CAR STOP

1 IN 413

1 IN 725

1 IN 470

1 IN 1000

1 IN 400

SECTION : **HORNSBY YARD**
 PAGE: 3 OF 5
 UPDATED TO : 6 March 2025

INFORMATION

HORNSBY YARD

THE HORNSBY INTERLOCKING CONSISTS OF THE AREA BOUNDED
 DOWN MAIN ACCEPT SIGNAL No. **HY 21**
 DOWN SHORE ACCEPT SIGNAL No. **HY 31**
 UP MAIN ACCEPT SIGNAL No. **HY 136**

YARD WORKING IS IN OPERATION WITHIN THE
 HORNSBY INTERLOCKING AND ALL TRAIN MOVEMENTS ARE
 UNDER THE CONTROL OF THE SIGNALLER AT HORNSBY

COLOURED LIGHTS INDICATOR SIGNALS ARE PROVIDED
 WHERE VISIBILITY OF RUNNING SIGNALS IS OBSTRUCTED AS
 FOLLOWS SIGNAL **HY 46** THE INDICATORS ALSO HAS A ROUTE
 INDICATOR ATTACHED TO IT, A LISTING OF
 INDICATIONS CAN BE FOUND IN THE TABLES BELOW

SIGNAL	DESTINATION	INDICATION
HY 57	DOWN MAIN (M)	D
	DOWN MAIN (S)	DM
	UP MAIN (M)	U
	UP MAIN (S)	UM
	DOWN SHORE (M)	-
	DOWN SHORE (S)	DS
	UP SHORE (M)	S
	UP SHORE (S)	US
	UP SIDING (S)	SG

SIGNAL	DESTINATION	INDICATION
HY 70	UP MAIN (M)	3
	UP MAIN (S)	3
	DOWN MAIN (M)	4
	DOWN MAIN (S)	4

SIGNAL	DESTINATION	INDICATION
HY 72	UP MAIN (M)	-
	UP MAIN (S)	UM
	DOWN MAIN (M)	-
	DOWN MAIN (S)	4

SIGNAL	DESTINATION	INDICATION
HY 58	DOWN SHORE (M)	-
	DOWN SHORE (S)	2
	UP MAIN (M)	-
	UP MAIN (S)	3

SIGNAL	DESTINATION	INDICATION
HY 74	UP MAIN (M)	-
	UP MAIN (S)	UM
	DOWN MAIN (M)	-
	DOWN MAIN (S)	4

SIGNAL	DESTINATION	INDICATION
HY 85	DOWN RELIEF (S)	-

SIGNAL	DESTINATION	INDICATION
HY 59	DOWN SHORE (M)	-
	DOWN SHORE (S)	DS
	UP SHORE (M)	-
	UP SHORE (S)	US
	UP SIDING (S)	SG

SIGNAL	DESTINATION	INDICATION
HY 76	UP SHORE (M)	-
	UP SHORE (S)	U
	DOWN SHORE (M)	-
	DOWN SHORE (S)	2

SIGNAL	DESTINATION	INDICATION
HY 86	OUTWARDS CAR SHED (M)	-
	OUTWARDS CAR SHED	OC
	UP SHORE (M)	-
	UP SHORE (S)	US

SIGNAL	DESTINATION	INDICATION
HY 60	DOWN MAIN (M)	-
	DOWN MAIN (S)	4
	DOWN RELIEF (S)	5

SIGNAL	DESTINATION	INDICATION
HY 77	UP SHORE (M)	-
	UP SHORE (S)	US
	INWARDS CARSHED (S)	IC

SIGNAL	DESTINATION	INDICATION
HY 93	TURNBACK 1 (S)	T1
	DOWN MAIN (M)	-
	DOWN MAIN (S)	DM

SIGNAL	DESTINATION	INDICATION
HY 61	No.2 UP SIDING (S)	U2
	No.3 UP SIDING (S)	U3
	No.4 UP SIDING (S)	U4
	No.5 UP SIDING (S)	U5
	No.6 UP SIDING (S)	U6
	No.7 UP SIDING (S)	U7

SIGNAL	DESTINATION	INDICATION
HY 78	UP SHORE (M)	-
	UP SHORE (S)	US
	UP MAIN (M)	U
	UP MAIN (S)	UM
	DOWN MAIN (M)	4
	DOWN MAIN (S)	4

SIGNAL	DESTINATION	INDICATION
HY 94	DOWN RELIEF (M)	DR
	DOWN SIDING (S)	DS

SIGNAL	DESTINATION	INDICATION
HY 62	UP SHORE (M)	-

SIGNAL	DESTINATION	INDICATION
HY 80	UP SHORE (M)	-
	UP SHORE (S)	-

SIGNAL	DESTINATION	INDICATION
HY 96	DOWN MAIN (S)	DM
	TURNBACK 1 (S)	T1

SIGNAL	DESTINATION	INDICATION
HY 63	NO. 1 UP SIDING (M)	-

SIGNAL	DESTINATION	INDICATION
HY 82	UP SHORE (M)	-
	UP SHORE (S)	-

SIGNAL	DESTINATION	INDICATION
HY 99	DOWN RELIEF (M)	-
	DOWN RELIEF (S)	DR
	DOWN MAIN (M)	-
	DOWN MAIN (S)	DM
	UP MAIN (S)	UM

SIGNAL	DESTINATION	INDICATION
HY 68	UP SHORE (M)	-
	UP SHORE (S)	US
	DOWN SHORE (S)	2

SIGNAL	DESTINATION	INDICATION
HY 83	DOWN RELIEF (S)	-

SIGNAL	DESTINATION	INDICATION
HY 101	DOWN MAIN (M)	-
	DOWN MAIN (S)	DM
	UP MAIN (S)	UM

SIGNAL	DESTINATION	INDICATION
HY 84	UP SHORE (M)	-
	UP SHORE (S)	-

SIGNAL	DESTINATION	INDICATION
HY 124	TURNBACK 1 (S)	T1
	DOWN RELIEF (S)	DR

SECTION : HORNSBY
MAP SET : STRATHFIELD TO COWAN
PAGE : 4 OF 5
UPDATED TO : 12 March 2025

NLA 302 HORNSBY

HY 99 HOME 34.605 KM	HY 106 HOME 34.669 KM	HY 124 HOME 34.700 KM	HY 129 HOME 34.815 KM	HY 130 HOME 34.892 KM
HY 131 HOME 34.950 KM	HY 132 HOME 35.127 KM	HY 133 HOME 34.950 KM	HY 134 HOME 35.577 KM	HY 135 HOME 34.998 KM
HY 138 HOME 35.382 KM	2 FRB HOME 34.753 KM	3 FRB HOME 34.757 KM	4 FRB HOME 34.843 KM	

**MULTI SPAD SIGNAL
3 FRB**

POINTS CLEARED
8
CARS

END
SIGNALLED
AUTHORITY
DO NOT PROCEED
UNLESS
AUTHORISED

9 & 10 POINTS
RACOR LEVER

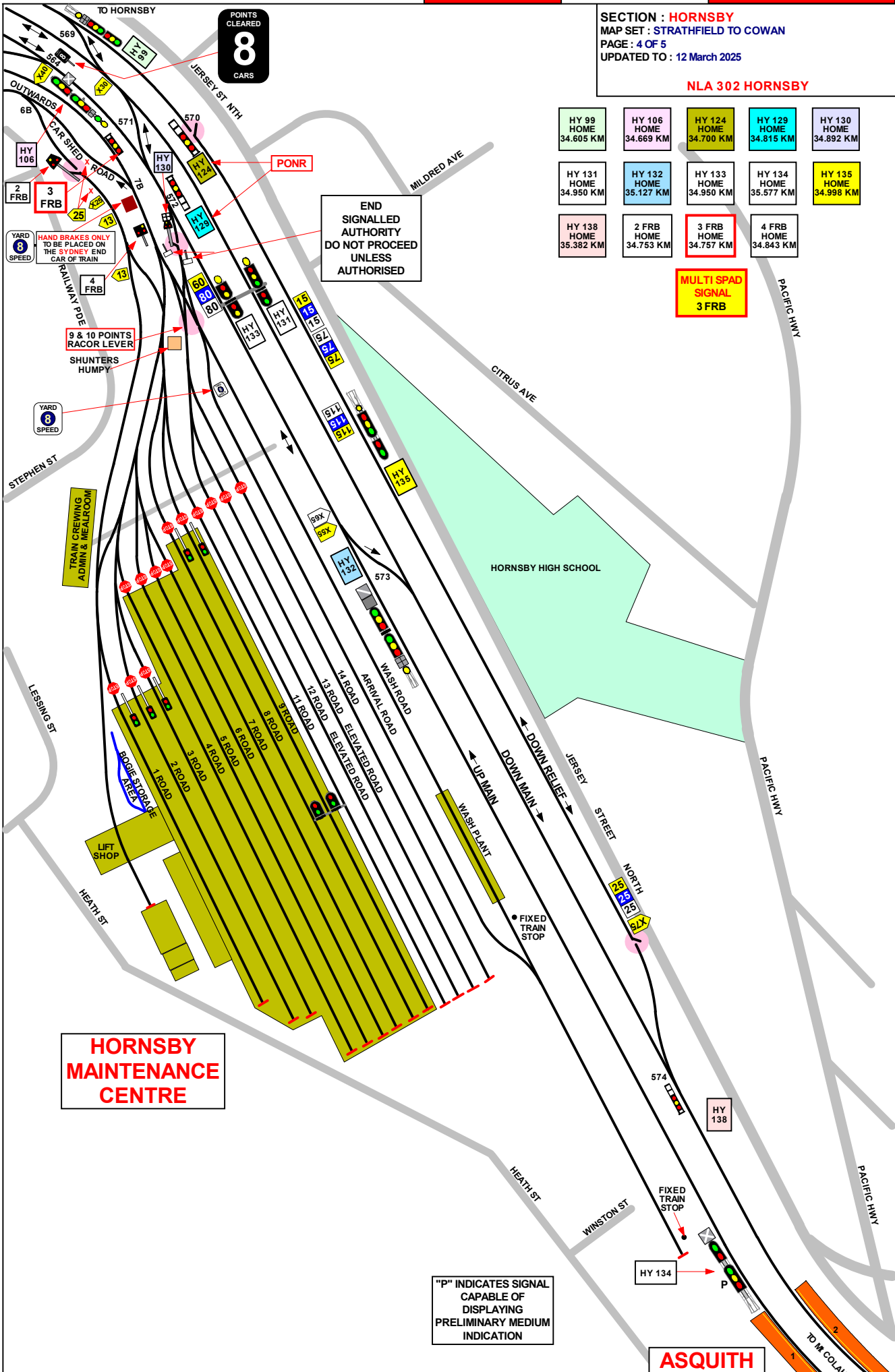
SHUNTERS
HUMPY

TRAIN CREWING
ADMIN & MEALROOM

**HORNSBY
MAINTENANCE
CENTRE**

"P" INDICATES SIGNAL
CAPABLE OF
DISPLAYING
PRELIMINARY MEDIUM
INDICATION

ASQUITH



SECTION : HORNSBY
 PAGE : 5 OF 5
 UPDATED TO : 6 March 2025

SIGNAL	DESTINATION	INDICATION
HY 99	DOWN RELIEF (M)	-
	DOWN RELIEF (S)	DR
	DOWN MAIN (M)	-
	DOWN MAIN (S)	DM
	UP MAIN (S)	UM

SIGNAL	DESTINATION	INDICATION
HY 132	UP MAIN (M)	-
	UP MAIN (S)	UM
	DOWN MAIN (M)	D
	DOWN MAIN (S)	DM
	TURNBACK 1 (M)	T
	TURNBACK 1 (S)	T1
	DOWN RELIEF (M)	R
	DOWN RELIEF (S)	DR

SIGNAL	DESTINATION	INDICATION
HY 106	UP SHORE (M)	-
	UP SHORE (S)	US
	UP MAIN (M)	-
	UP MAIN (S)	UM

SIGNAL	DESTINATION	INDICATION
HY 135	DOWN MAIN (M)	-
	DOWN MAIN (S)	-

SIGNAL	DESTINATION	INDICATION
HY 124	TURNBACK 1 (S)	T1
	DOWN RELIEF (S)	DR

SIGNAL	DESTINATION	INDICATION
HY 129	UP MAIN (S)	UM
	CAR SHEDS (S)	CS

SIGNAL	DESTINATION	INDICATION
HY 138	UP MAIN (S)	M
	-	-
	DOWN RELIEF(S)	R

SIGNAL	DESTINATION	INDICATION
HY 130	UP MAIN (S)	UM
	DOWN MAIN (S)	DM
	TURNBACK 1 (S)	T1
	DOWN RELIEF (S)	DR

SECTION : ASQUITH TO MT COLAH
MAP SET : STRATHFIELD TO COWAN
UPDATED TO : 6 March 2025

INFORMATION

CONTROLLED FROM : RAIL OPERATIONS CENTRE
RADIO AREA CODE : 017 (HORNSBY)

GRADIENT

1 IN 78

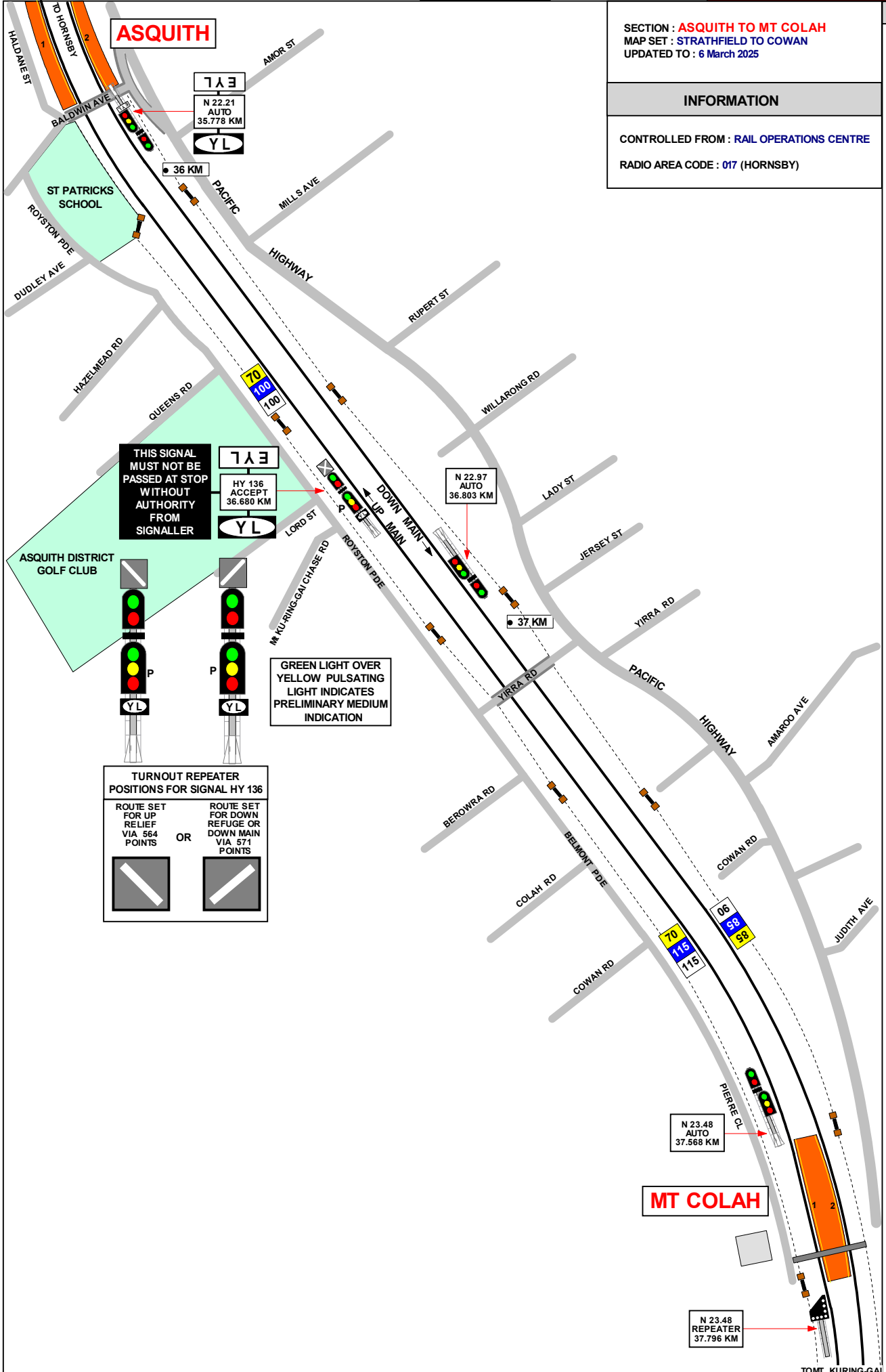
1 IN 64

LEVEL

1 IN 48

1 IN 65

LEVEL



ASQUITH

THIS SIGNAL MUST NOT BE PASSED AT STOP WITHOUT AUTHORITY FROM SIGNALLER

GREEN LIGHT OVER YELLOW PULSATING LIGHT INDICATES PRELIMINARY MEDIUM INDICATION

TURNOUT REPEATER POSITIONS FOR SIGNAL HY 136

ROUTE SET FOR UP RELIEF VIA 564 POINTS	OR	ROUTE SET FOR DOWN REFUGE OR DOWN MAIN VIA 571 POINTS

MT COLAH

TO HORNSBY

MT COLAH

SECTION : MT COLAH TO MT KURING- GAI
 MAP SET : STRATHFIELD TO COWAN
 UPDATED TO : 6 March 2025

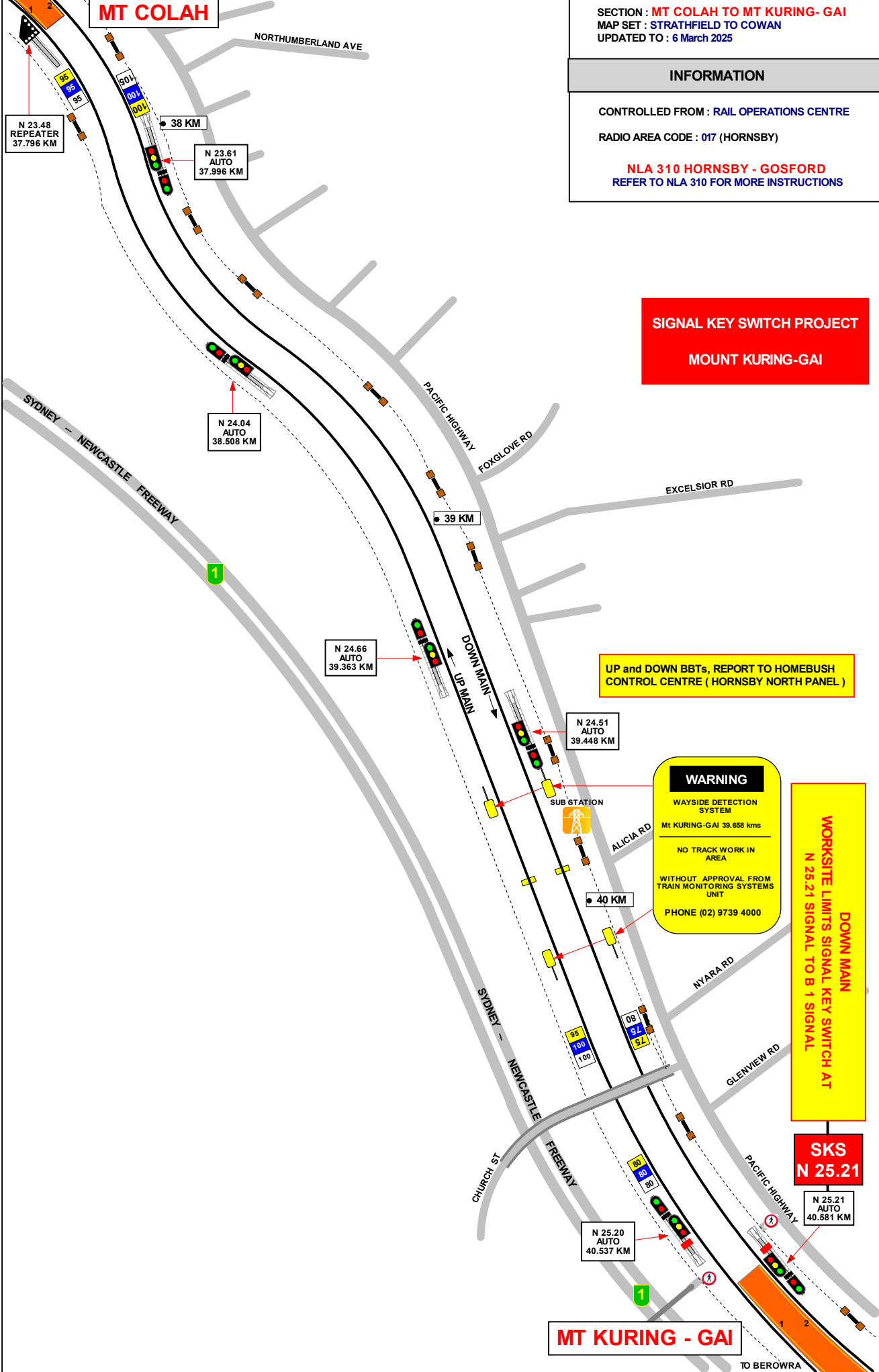
INFORMATION

CONTROLLED FROM : RAIL OPERATIONS CENTRE
 RADIO AREA CODE : 017 (HORNSBY)

NLA 310 HORNSBY - GOSFORD
 REFER TO NLA 310 FOR MORE INSTRUCTIONS

GRADIENT

LEVEL



SIGNAL KEY SWITCH PROJECT
MOUNT KURING-GAI

UP and DOWN BBTs, REPORT TO HOMEBSH CONTROL CENTRE (HORNSBY NORTH PANEL)

WARNING

WAYSIDE DETECTION SYSTEM
 Mt KURING-GAI 39.658 kms

NO TRACK WORK IN AREA

WITHOUT APPROVAL FROM TRAIN MONITORING SYSTEMS UNIT

PHONE (02) 9739 4000

WORKSITE LIMITS SIGNAL KEY SWITCH AT N 25.21 SIGNAL TO B 1 SIGNAL

SKS N 25.21

MT KURING - GAI

1 IN 100

1 IN 300

1 IN 40

1 IN 275

1 IN 240

1 IN 220

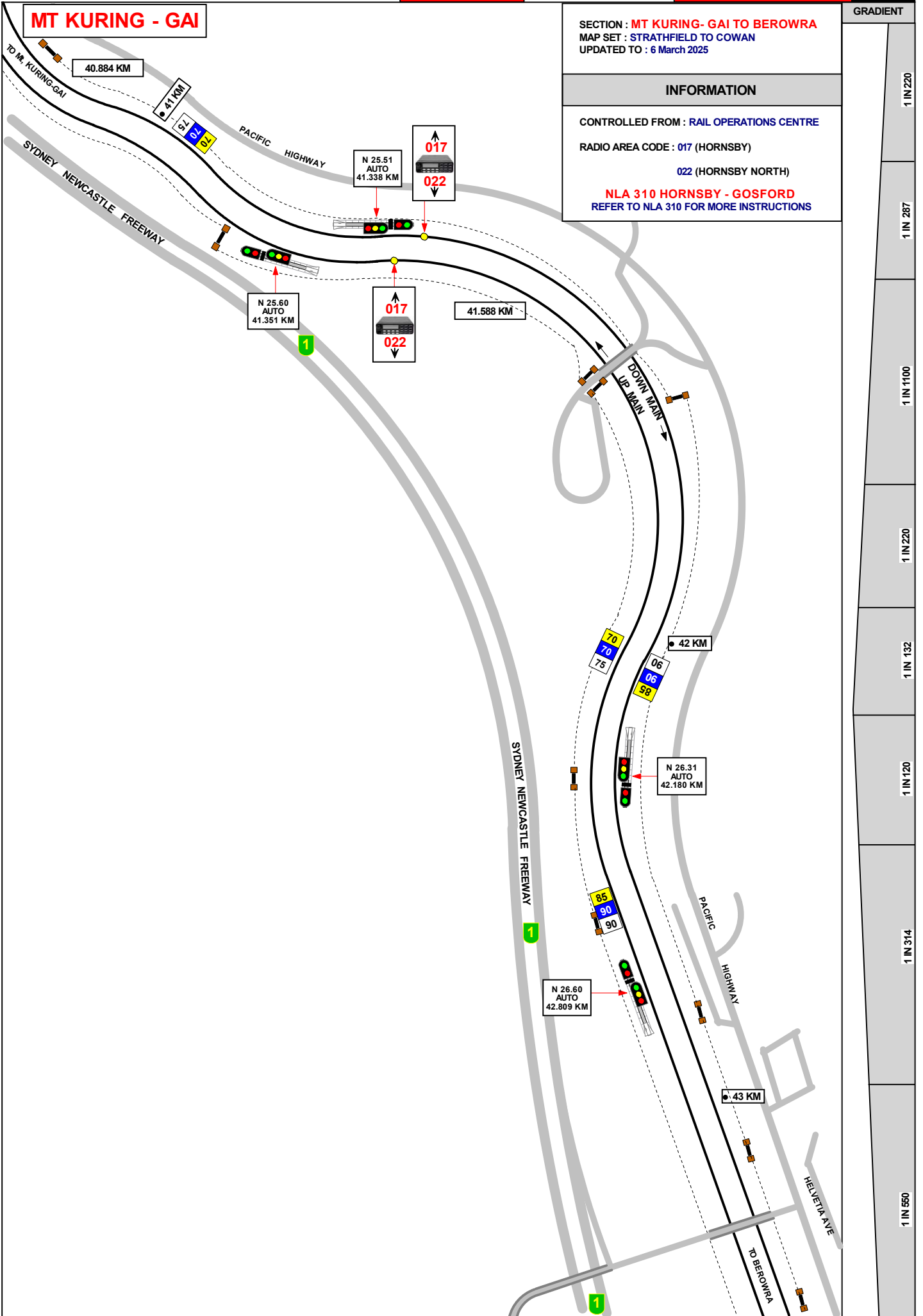
MT KURING - GAI

SECTION : MT KURING- GAI TO BEROWRA
MAP SET : STRATHFIELD TO COWAN
UPDATED TO : 6 March 2025

GRADIENT

INFORMATION

CONTROLLED FROM : RAIL OPERATIONS CENTRE
RADIO AREA CODE : 017 (HORNSBY)
022 (HORNSBY NORTH)
NLA 310 HORNSBY - GOSFORD
REFER TO NLA 310 FOR MORE INSTRUCTIONS



SECTION : MT KURING-GAI TO BEROWRA
MAP SET : STRATHFIELD TO COWAN
UPDATED TO : 6 March 2025

INFORMATION

CONTROLLED FROM : RAIL OPERATIONS CENTRE

RADIO AREA CODE : 017 (HORNSBY)

022 (HORNSBY NORTH)

APPENDICES
PLEASE SEE APPENDICES FOR POINTS OF NO RETURN,
TERMINATING MOVEMENTS AND SIDING LENGTHS

NLA 310 HORNSBY - GOSFORD
REFER TO NLA 310 FOR MORE INSTRUCTIONS

GRADIENT

1 IN 550

1 IN 142

1 IN 200

1 IN 134

