

# DRIVERS ROUTE KNOWLEDGE DIAGRAMS

## MAIN NORTH LINE

STRATHFIELD  
NORTH STRATHFIELD  
CONCORD WEST  
RHODES  
MEADOWBANK  
WEST RYDE  
DENISTONE  
EASTWOOD  
EPPING  
CHELTENHAM  
BEECROFT  
PENNANT HILLS  
THORNLEIGH  
NORMANHURST  
HORNSBY  
ASQUITH  
MOUNT COLAH  
MOUNT KURING-GAI  
BEROWRA

**Effective Date:** May 2026

**Version:** 5.24

### **Explanatory Notes:**

Navigate to your area of interest via the station index or by using links created in Adobe bookmarks.

This document is approved for **route knowledge only**.

**Do not use these diagrams for any safety related purpose** without validating the information against a controlled source or in the field.

Information in these diagrams is uncontrolled.

Please report any updates to [gis.support@transport.nsw.gov.au](mailto:gis.support@transport.nsw.gov.au)



**Copyright:** Sydney Trains

**Ownership:** Location Services

**Location:** CM Record No.D2015/577

TO BURWOOD

SECTION : **STRATHFIELD AND HOMEBUSH TO NORTH STRATHFIELD**  
 MAP SET : STRATHFIELD TO COWAN  
 UPDATED TO : 11 May 2026

GRADIENT  
 1 IN 1320

**INFORMATION**

CONTROLLED FROM : RAIL OPERATIONS CENTRE /  
 HOMEBUSH CONTROL CENTRE

RADIO AREA CODE : 036 (STRATHFIELD)  
 018 (NTH STRATHFIELD)

**SPECIAL POINTS OF INTEREST**

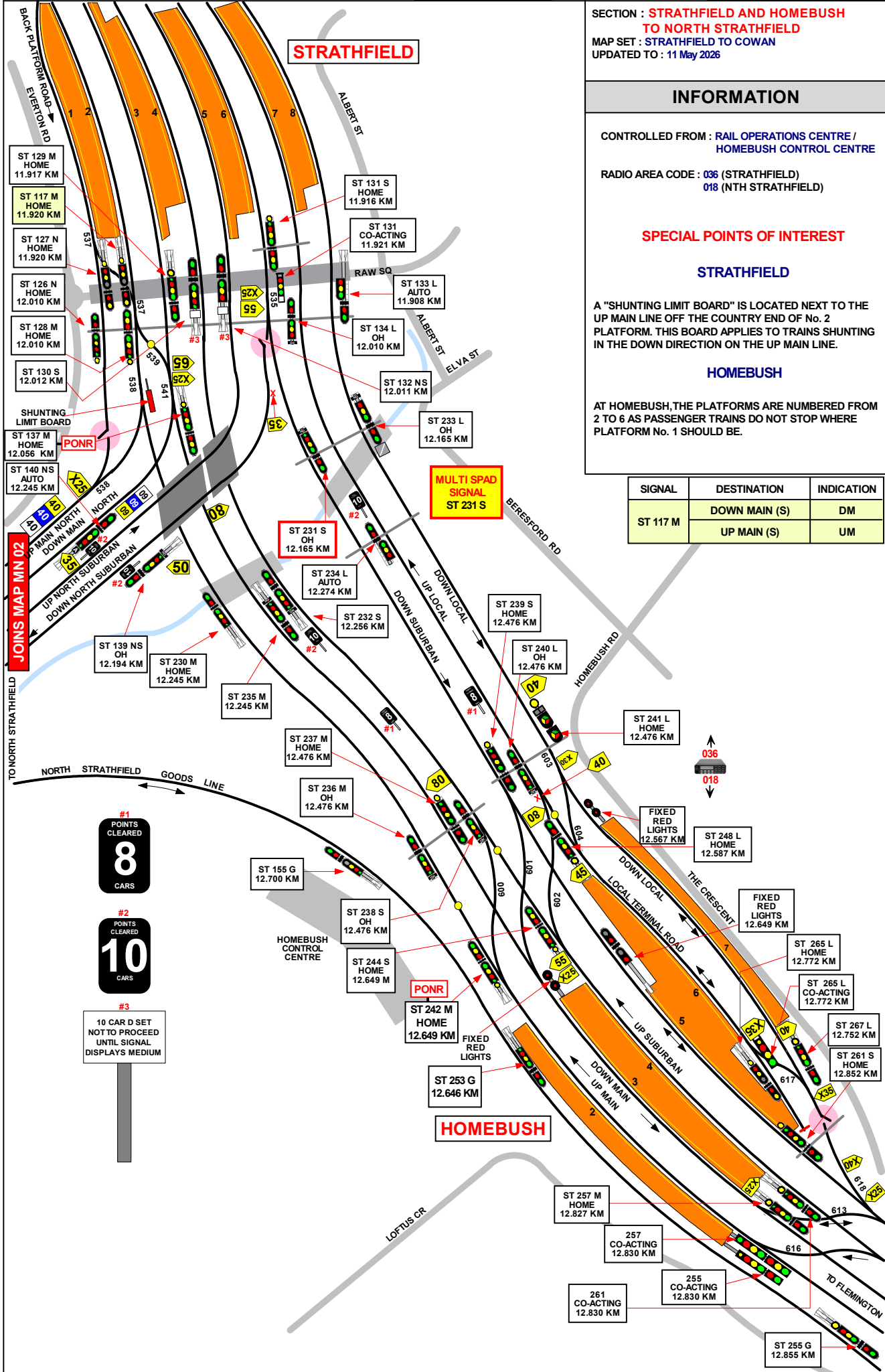
**STRATHFIELD**

A "SHUNTING LIMIT BOARD" IS LOCATED NEXT TO THE UP MAIN LINE OFF THE COUNTRY END OF No. 2 PLATFORM. THIS BOARD APPLIES TO TRAINS SHUNTING IN THE DOWN DIRECTION ON THE UP MAIN LINE.

**HOMEBUSH**

AT HOMEBUSH, THE PLATFORMS ARE NUMBERED FROM 2 TO 6 AS PASSENGER TRAINS DO NOT STOP WHERE PLATFORM No. 1 SHOULD BE.

SIGNAL	DESTINATION	INDICATION
ST 117 M	DOWN MAIN (S)	DM
	UP MAIN (S)	UM



1 IN 100

E

1 IN 70

E

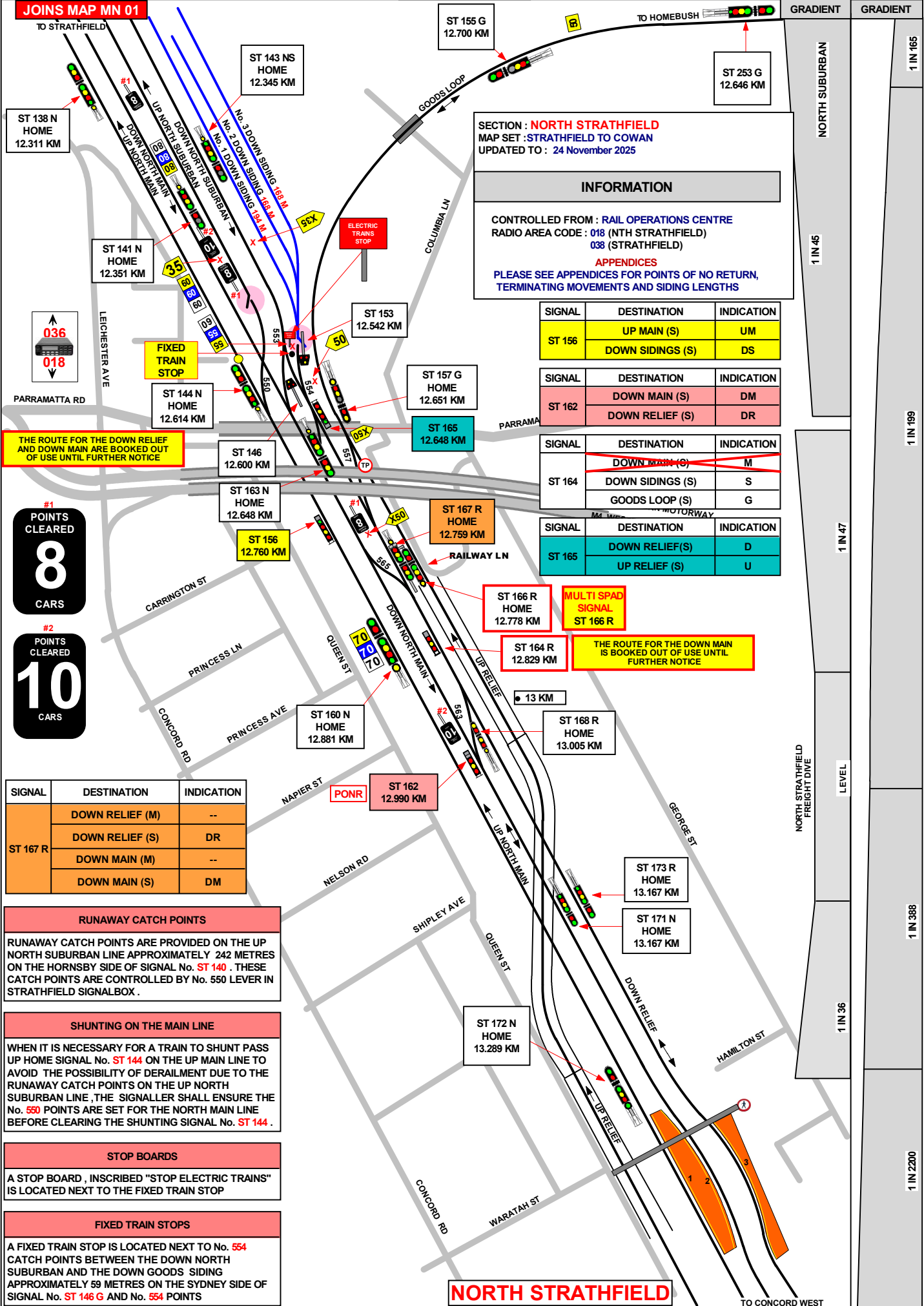
1 IN 943

#1  
 POINTS CLEARED  
**8**  
 CARS

#2  
 POINTS CLEARED  
**10**  
 CARS

#3  
 10 CAR D SET  
 NOT TO PROCEED  
 UNTIL SIGNAL  
 DISPLAYS MEDIUM

JOINS MAP MN 01



**SECTION : NORTH STRATHFIELD**  
**MAP SET : STRATHFIELD TO COWAN**  
 UPDATED TO : 24 November 2025

**INFORMATION**

CONTROLLED FROM : RAIL OPERATIONS CENTRE  
 RADIO AREA CODE : 018 (NTH STRATHFIELD)  
 038 (STRATHFIELD)

APPENDICES  
 PLEASE SEE APPENDICES FOR POINTS OF NO RETURN,  
 TERMINATING MOVEMENTS AND SIDING LENGTHS

SIGNAL	DESTINATION	INDICATION
ST 156	UP MAIN (S)	UM
	DOWN SIDINGS (S)	DS

SIGNAL	DESTINATION	INDICATION
ST 162	DOWN MAIN (S)	DM
	DOWN RELIEF (S)	DR

SIGNAL	DESTINATION	INDICATION
ST 164	<del>DOWN MAIN (S)</del>	<del>M</del>
	DOWN SIDINGS (S)	S
	GOODS LOOP (S)	G

SIGNAL	DESTINATION	INDICATION
ST 165	DOWN RELIEF(S)	D
	UP RELIEF (S)	U

THE ROUTE FOR THE DOWN RELIEF AND DOWN MAIN ARE BOOKED OUT OF USE UNTIL FURTHER NOTICE

MULTI SPAD SIGNAL ST 166 R

THE ROUTE FOR THE DOWN MAIN IS BOOKED OUT OF USE UNTIL FURTHER NOTICE

#1 POINTS CLEARED  
**8**  
 CARS

#2 POINTS CLEARED  
**10**  
 CARS

SIGNAL	DESTINATION	INDICATION
ST 167 R	DOWN RELIEF (M)	--
	DOWN RELIEF (S)	DR
	DOWN MAIN (M)	--
	DOWN MAIN (S)	DM

**RUNAWAY CATCH POINTS**

RUNAWAY CATCH POINTS ARE PROVIDED ON THE UP NORTH SUBURBAN LINE APPROXIMATELY 242 METRES ON THE HORNSBY SIDE OF SIGNAL No. ST 140 . THESE CATCH POINTS ARE CONTROLLED BY No. 550 LEVER IN STRATHFIELD SIGNALBOX .

**SHUNTING ON THE MAIN LINE**

WHEN IT IS NECESSARY FOR A TRAIN TO SHUNT PASS UP HOME SIGNAL No. ST 144 ON THE UP MAIN LINE TO AVOID THE POSSIBILITY OF DERAILMENT DUE TO THE RUNAWAY CATCH POINTS ON THE UP NORTH SUBURBAN LINE, THE SIGNALLER SHALL ENSURE THE No. 550 POINTS ARE SET FOR THE NORTH MAIN LINE BEFORE CLEARING THE SHUNTING SIGNAL No. ST 144 .

**STOP BOARDS**

A STOP BOARD , INSCRIBED "STOP ELECTRIC TRAINS" IS LOCATED NEXT TO THE FIXED TRAIN STOP

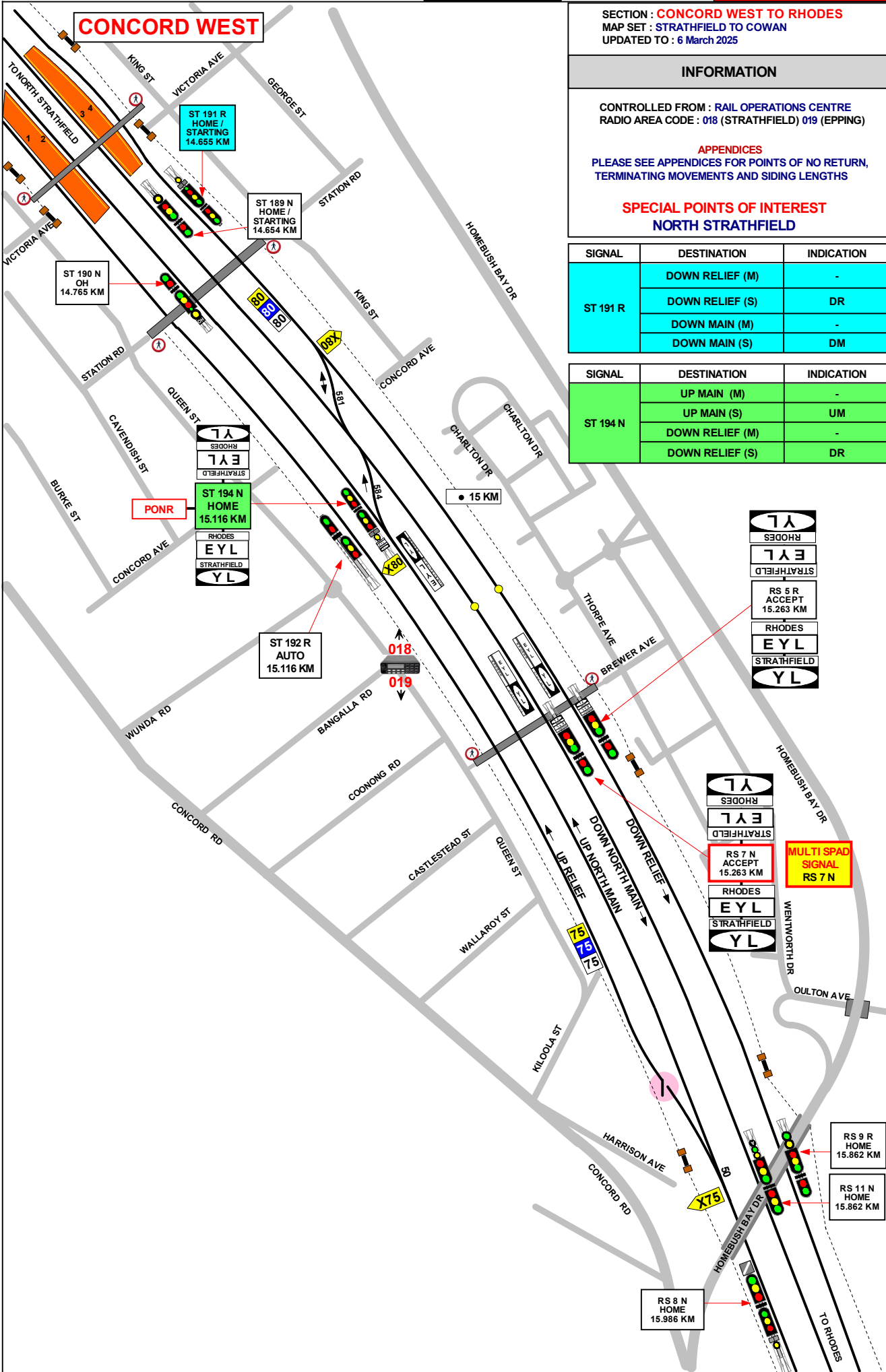
**FIXED TRAIN STOPS**

A FIXED TRAIN STOP IS LOCATED NEXT TO No. 554 CATCH POINTS BETWEEN THE DOWN NORTH SUBURBAN AND THE DOWN GOODS SIDING APPROXIMATELY 59 METRES ON THE SYDNEY SIDE OF SIGNAL No. ST 146 G AND No. 554 POINTS

**NORTH STRATHFIELD**

GRADIENT	LEVEL
1 IN 165	
1 IN 199	
1 IN 45	
1 IN 47	
1 IN 36	
1 IN 388	
1 IN 2200	





**CONCORD WEST**

SECTION : **CONCORD WEST TO RHODES**  
 MAP SET : STRATHFIELD TO COWAN  
 UPDATED TO : 6 March 2025

GRADIENT

**INFORMATION**

CONTROLLED FROM : RAIL OPERATIONS CENTRE  
 RADIO AREA CODE : 018 (STRATHFIELD) 019 (EPPING)

**APPENDICES**  
 PLEASE SEE APPENDICES FOR POINTS OF NO RETURN,  
 TERMINATING MOVEMENTS AND SIDING LENGTHS

**SPECIAL POINTS OF INTEREST**  
**NORTH STRATHFIELD**

SIGNAL	DESTINATION	INDICATION
ST 191 R	DOWN RELIEF (M)	-
	DOWN RELIEF (S)	DR
	DOWN MAIN (M)	-
	DOWN MAIN (S)	DM

SIGNAL	DESTINATION	INDICATION
ST 194 N	UP MAIN (M)	-
	UP MAIN (S)	UM
	DOWN RELIEF (M)	-
	DOWN RELIEF (S)	DR

1 IN 139

1 IN 161

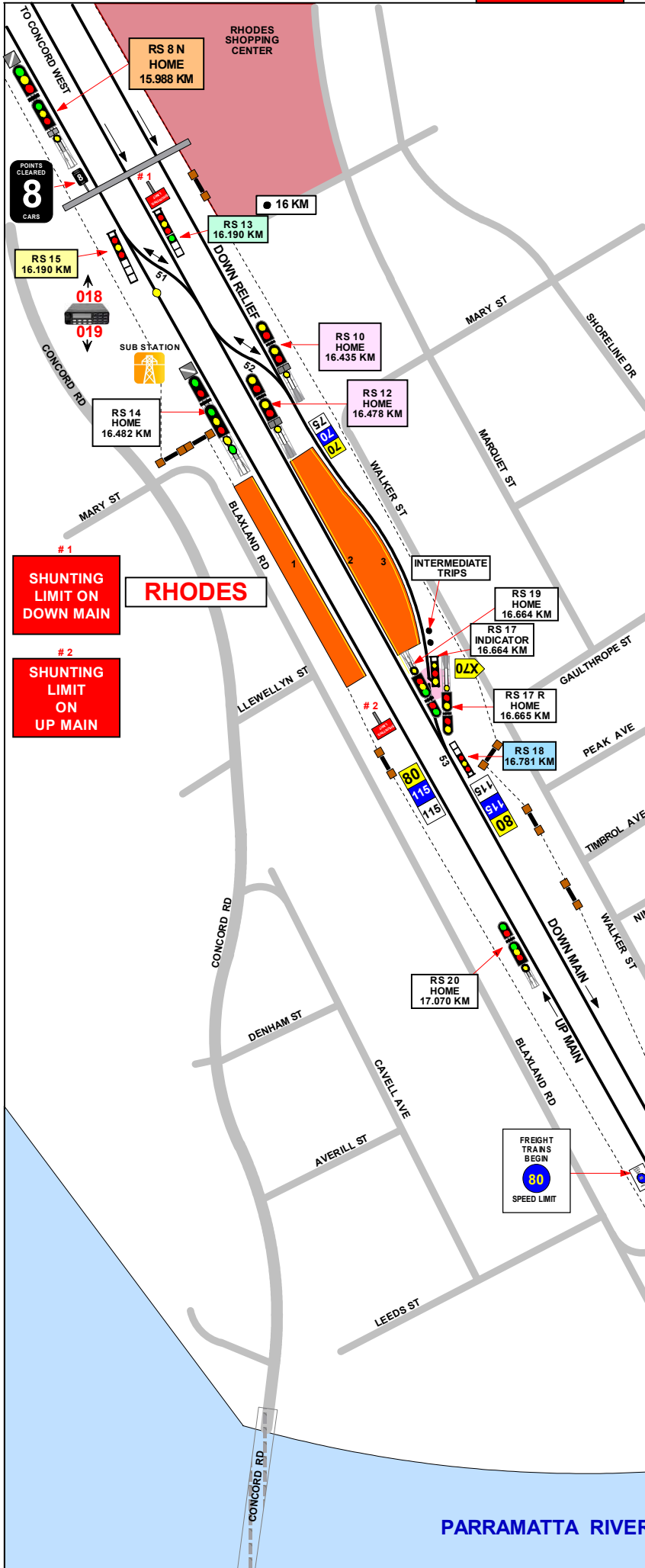
1 IN 510

1 IN 2200

1 IN 135

1 IN 430

1 IN 730



SECTION : **RHODES TO MEADOWBANK**  
 MAP SET : **STRATHFIELD TO COWAN**  
 UPDATED TO : 6 March 2025

**INFORMATION**

CONTROLLED FROM : **RAIL OPERATIONS CENTRE**  
 RADIO AREA CODE : 018 (STRATHFIELD) 019 (EPPING)

**APPENDICES**  
 PLEASE SEE APPENDICES FOR POINTS OF NO RETURN,  
 TERMINATING MOVEMENTS AND SIDING LENGTHS

**NLA 300 STRATHFIELD - HORNSBY**

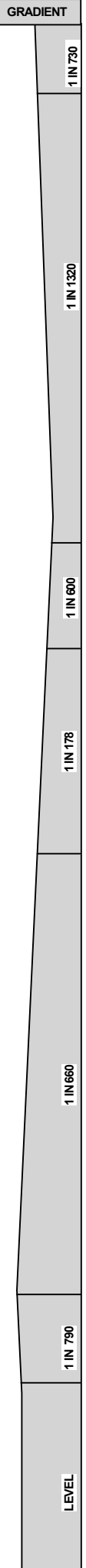
SIGNAL	DESTINATION	INDICATION
RS 15	DOWN RELIEF (S)	R
	DOWN MAIN (S)	D
	UP MAIN (S)	U

SIGNAL	DESTINATION	INDICATION
RS 13	DOWN RELIEF (S)	R
	DOWN MAIN (S)	D

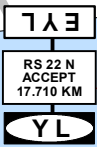
SIGNAL	DESTINATION	INDICATION
RS 10	DOWN MAIN (S)	DM
RS 12	UP MAIN (M)	UM

SIGNAL	DESTINATION	INDICATION
RS 18	DOWN MAIN (S)	DM
	DOWN RELIEF	DR

SIGNAL	DESTINATION	INDICATION
RS 8 N	UP RELIEF (M)	-
	UP RELIEF (S)	UR
	UP MAIN (M)	-
	UP MAIN (S)	UM



WHEN THE "A" LIGHT IS OUT THIS SIGNAL IS TO BE PASSED AT STOP WHEN AUTHORIZED BY THE SIGNALLER



SECTION : **MEADOWBANK TO WEST RYDE**  
 MAP SET : STRATHFIELD TO COWAN  
 UPDATED TO : 16 February 2026

**INFORMATION**

CONTROLLED FROM : RAIL OPERATIONS CENTRE  
 RADIO AREA CODE : 019 (EPPING)

**SPECIAL POINTS OF INTEREST**

**NLA 300 STRATHFIELD - HORNSBY**  
 REFER TO NLA 300 FOR SPECIAL INSTRUCTIONS

GRADIENT

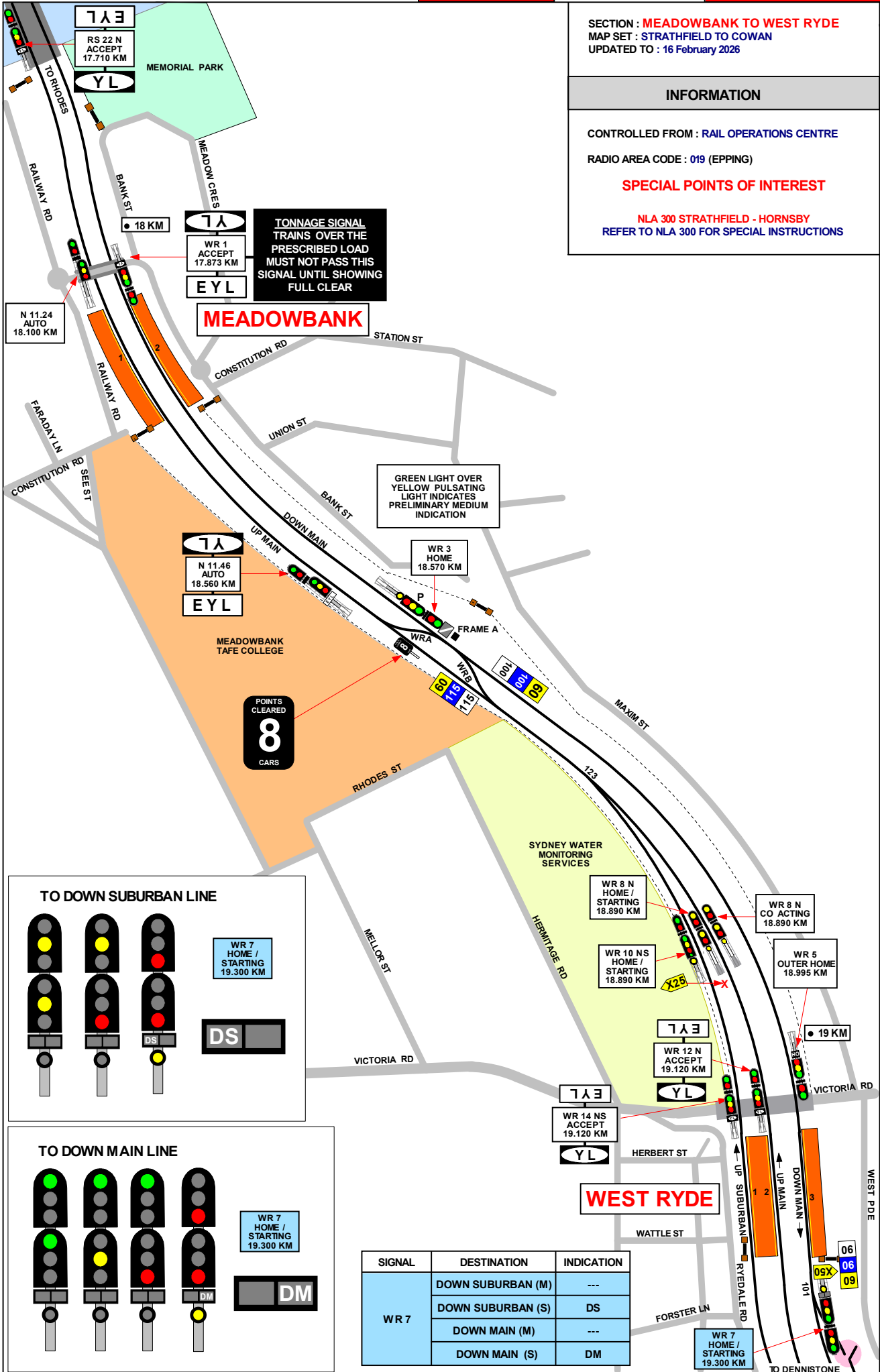
LEVEL

1 IN 330

1 IN 132

1 IN 60

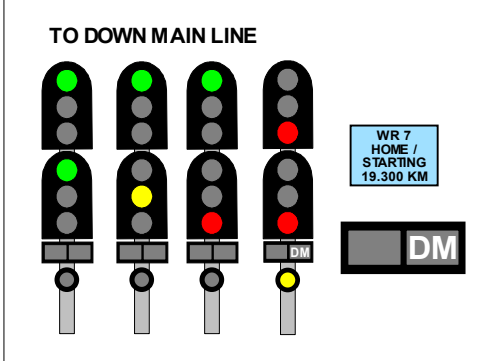
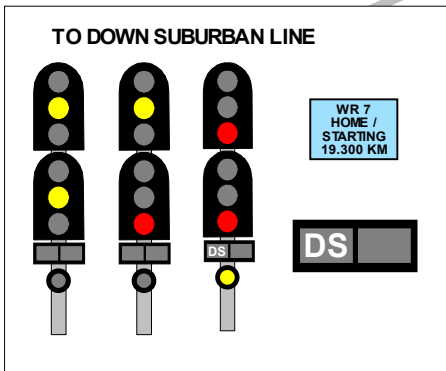
1 IN 330



**TONNAGE SIGNAL**  
 TRAINS OVER THE  
 PRESCRIBED LOAD  
 MUST NOT PASS THIS  
 SIGNAL UNTIL SHOWING  
 FULL CLEAR

GREEN LIGHT OVER  
 YELLOW PULSATING  
 LIGHT INDICATES  
 PRELIMINARY MEDIUM  
 INDICATION

POINTS  
 CLEARED  
**8**  
 CARS



SIGNAL	DESTINATION	INDICATION
WR 7	DOWN SUBURBAN (M)	---
	DOWN SUBURBAN (S)	DS
	DOWN MAIN (M)	---
	DOWN MAIN (S)	DM

**WEST RYDE**

SECTION : WEST RYDE TO DENISTONE  
 MAP SET : STRATHFIELD TO COWAN  
 UPDATED TO : 6 March 2025

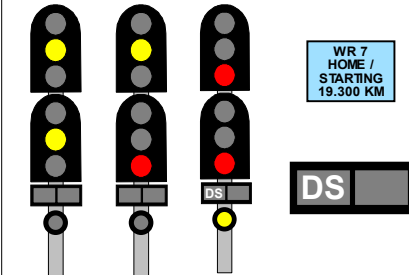
**INFORMATION**

CONTROLLED FROM : RAIL OPERATIONS CENTRE  
 RADIO AREA CODE : 019 (EPPING)

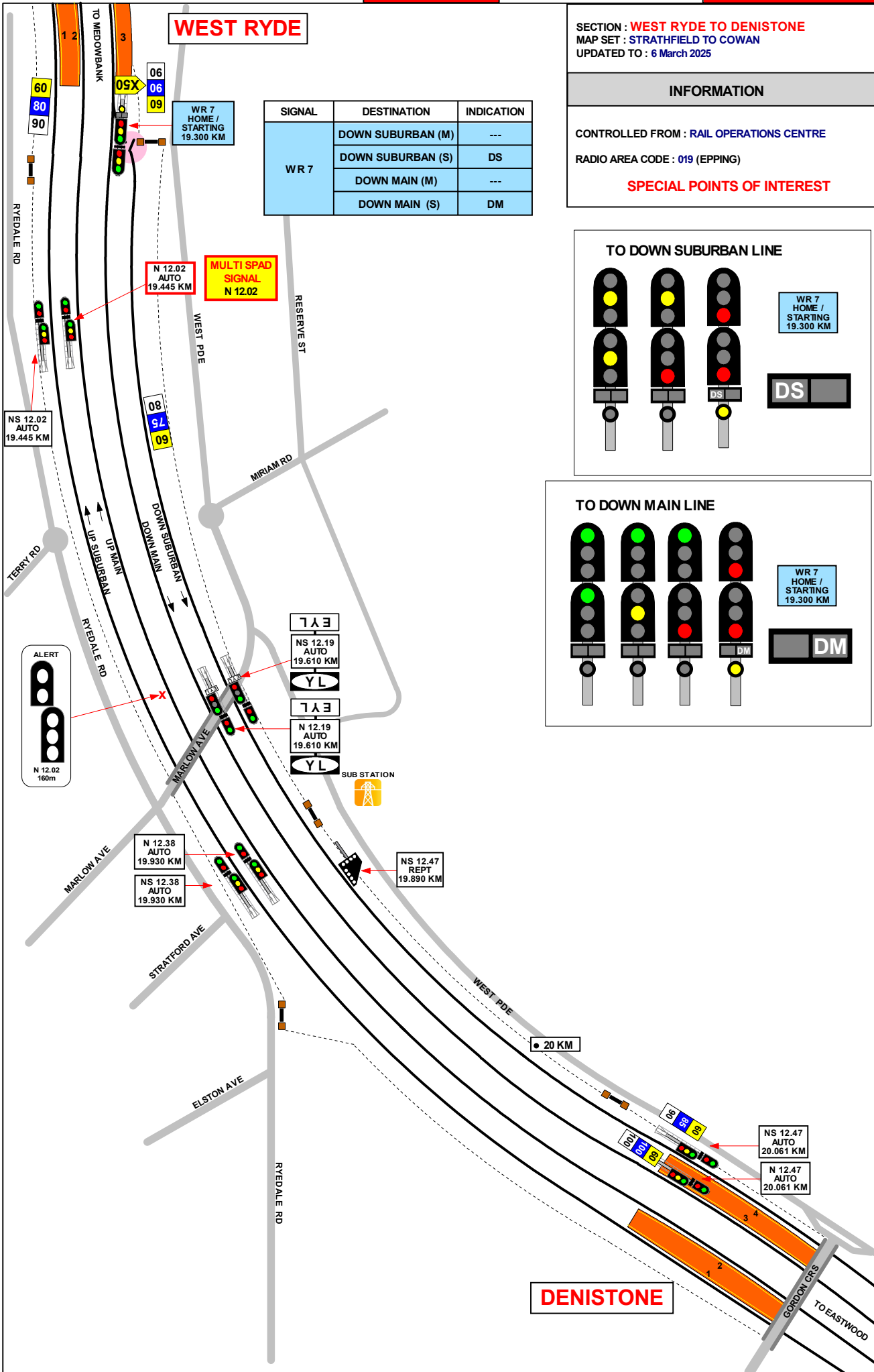
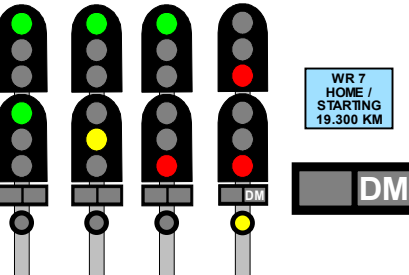
**SPECIAL POINTS OF INTEREST**

SIGNAL	DESTINATION	INDICATION
WR 7	DOWN SUBURBAN (M)	---
	DOWN SUBURBAN (S)	DS
	DOWN MAIN (M)	---
	DOWN MAIN (S)	DM

**TO DOWN SUBURBAN LINE**



**TO DOWN MAIN LINE**



1 IN 300

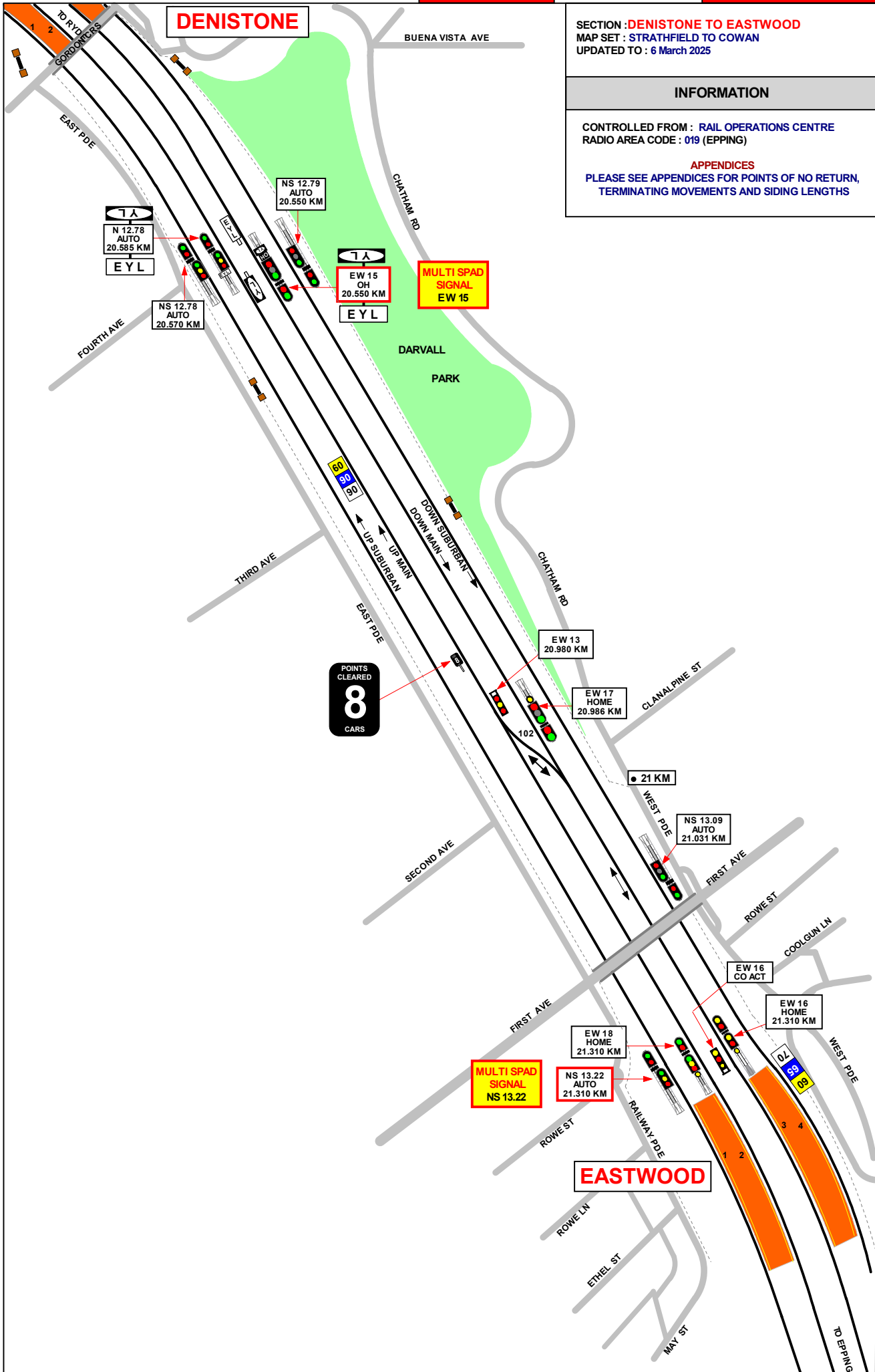
1 IN 40

SECTION : DENISTONE TO EASTWOOD  
MAP SET : STRATHFIELD TO COWAN  
UPDATED TO : 6 March 2025

INFORMATION

CONTROLLED FROM : RAIL OPERATIONS CENTRE  
RADIO AREA CODE : 019 (EPPING)

APPENDICES  
PLEASE SEE APPENDICES FOR POINTS OF NO RETURN,  
TERMINATING MOVEMENTS AND SIDING LENGTHS



1 IN 40

1 IN 66

1 IN 132

LEVEL

EASTWOOD

SECTION : EASTWOOD TO EPPING  
 MAP SET : STRATHFIELD TO COWAN  
 UPDATED TO : 15 January 2026

GRADIENT

INFORMATION

CONTROLLED FROM : RAIL OPERATIONS CENTRE  
 RADIO AREA CODE : 019 (EPPING)

APPENDICES  
 PLEASE SEE APPENDICES FOR POINTS OF NO RETURN,  
 TERMINATING MOVEMENTS AND SIDING LENGTHS

SPECIAL POINTS OF INTEREST  
 EPPING

OWING TO THE SHARP TURNOUTS, FREIGHT TRAINS MUST NOT TRAVEL VIA No. 105 POINTS IN THE REVERSE POSITION.

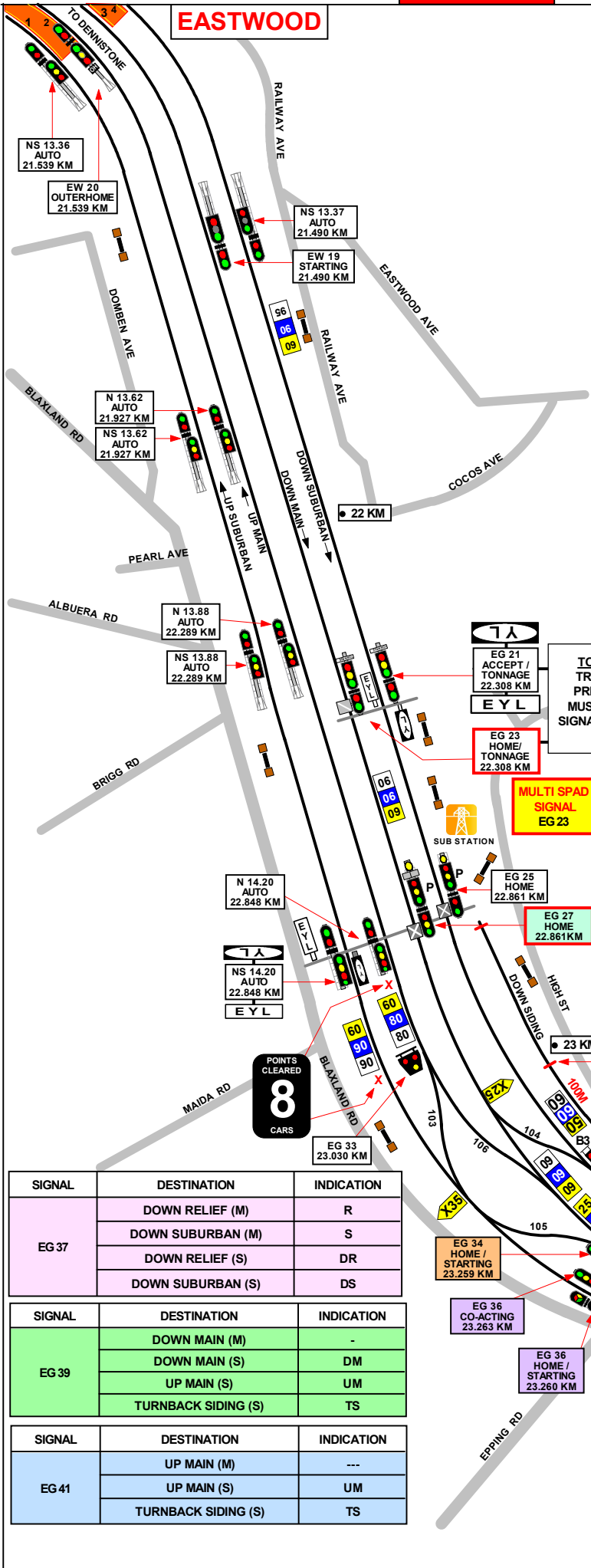
LEVEL

1 IN 75

1 IN 55

1 IN 44

1 IN 75



SIGNAL	DESTINATION	INDICATION
EG 27	DOWN SUBURBAN (M)	-
	DOWN MAIN (M)	-
	DOWN SUBURBAN (S)	DS
	DOWN MAIN (S)	DM

SIGNAL	DESTINATION	INDICATION
EG 34	UP SUBURBAN (M)	-
	UP MAIN (M)	-
	UP SUBURBAN (S)	US
	UP MAIN (S)	UM

SIGNAL	DESTINATION	INDICATION
EG 36 + EG 36 CO-ACTING	UP SUBURBAN (M)	-
	UP MAIN (M)	-
	UP SUBURBAN (S)	US
	UP MAIN (S)	UM

SIGNAL	DESTINATION	INDICATION
EG 37	DOWN RELIEF (M)	R
	DOWN SUBURBAN (M)	S
	DOWN RELIEF (S)	DR
	DOWN SUBURBAN (S)	DS

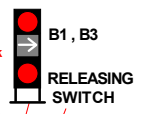
SIGNAL	DESTINATION	INDICATION
EG 39	DOWN MAIN (M)	-
	DOWN MAIN (S)	DM
	UP MAIN (S)	UM
	TURNBACK SIDING (S)	TS

SIGNAL	DESTINATION	INDICATION
EG 41	UP MAIN (M)	---
	UP MAIN (S)	UM
	TURNBACK SIDING (S)	TS

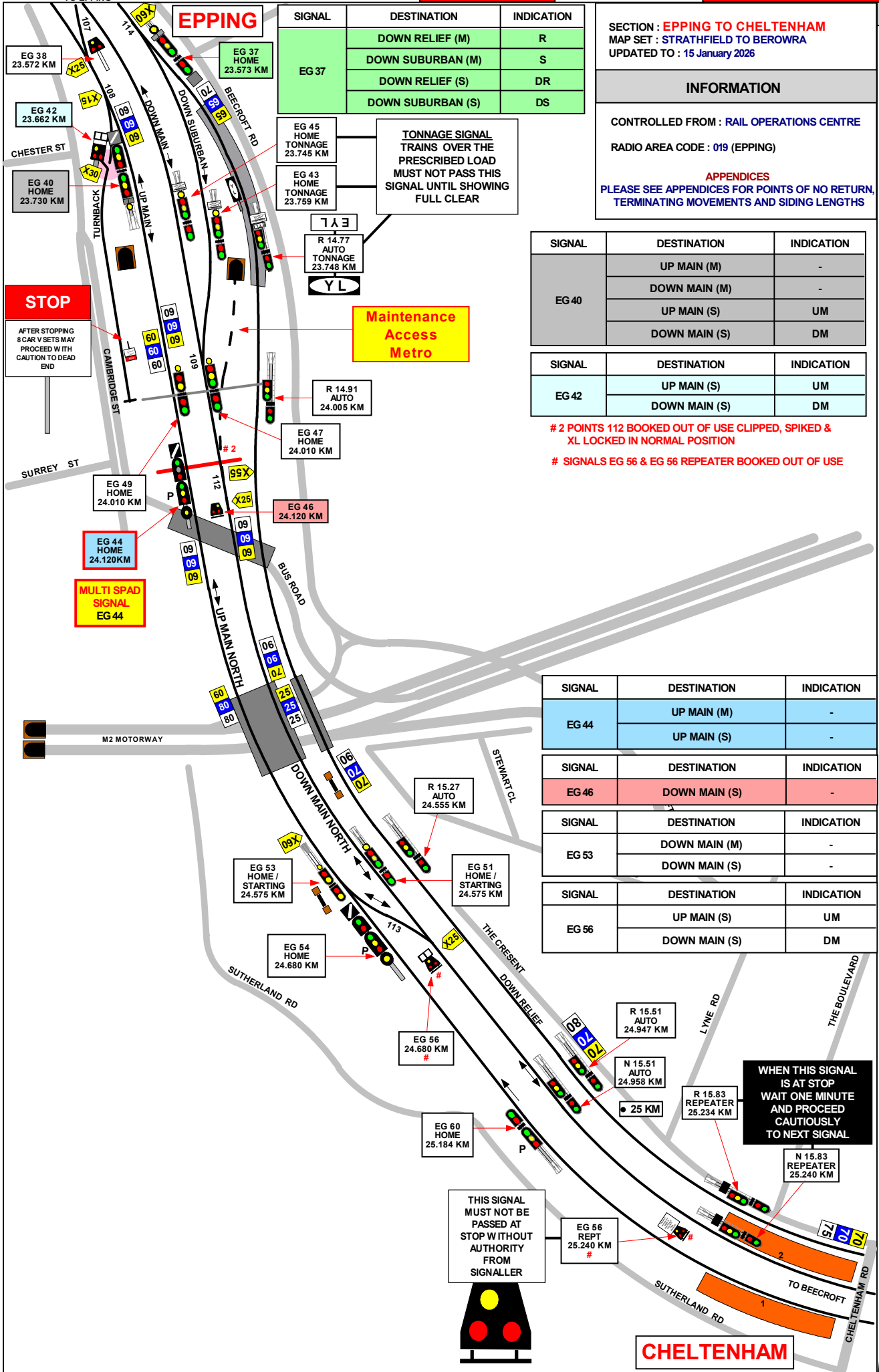
TONNAGE SIGNAL  
 TRAINS OVER THE  
 PRESCRIBED LOAD  
 MUST NOT PASS THIS  
 SIGNAL UNTIL SHOWING  
 FULL CLEAR

MULTI SPAD  
 SIGNAL  
 EG 23

MULTI SPAD  
 SIGNAL  
 EG 27



POINTS  
 CLEARED  
 8  
 CARS



SIGNAL	DESTINATION	INDICATION
EG 37	DOWN RELIEF (M)	R
	DOWN SUBURBAN (M)	S
	DOWN RELIEF (S)	DR
	DOWN SUBURBAN (S)	DS

SECTION : EPPING TO CHELTENHAM  
 MAP SET : STRATHFIELD TO BEROWRA  
 UPDATED TO : 15 January 2026

**INFORMATION**

CONTROLLED FROM : RAIL OPERATIONS CENTRE  
 RADIO AREA CODE : 019 (EPPING)

**APPENDICES**  
 PLEASE SEE APPENDICES FOR POINTS OF NO RETURN,  
 TERMINATING MOVEMENTS AND SIDING LENGTHS

SIGNAL	DESTINATION	INDICATION
EG 40	UP MAIN (M)	-
	DOWN MAIN (M)	-
	UP MAIN (S)	UM
	DOWN MAIN (S)	DM

SIGNAL	DESTINATION	INDICATION
EG 42	UP MAIN (S)	UM
	DOWN MAIN (S)	DM

# 2 POINTS 112 BOOKED OUT OF USE CLIPPED, SPIKED & XL LOCKED IN NORMAL POSITION  
 # SIGNALS EG 56 & EG 56 REPEATER BOOKED OUT OF USE

SIGNAL	DESTINATION	INDICATION
EG 44	UP MAIN (M)	-
	UP MAIN (S)	-

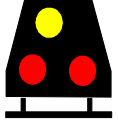
SIGNAL	DESTINATION	INDICATION
EG 46	DOWN MAIN (S)	-

SIGNAL	DESTINATION	INDICATION
EG 53	DOWN MAIN (M)	-
	DOWN MAIN (S)	-

SIGNAL	DESTINATION	INDICATION
EG 56	UP MAIN (S)	UM
	DOWN MAIN (S)	DM

WHEN THIS SIGNAL IS AT STOP  
 WAIT ONE MINUTE  
 AND PROCEED  
 CAUTIOUSLY  
 TO NEXT SIGNAL

THIS SIGNAL MUST NOT BE PASSED AT STOP WITHOUT AUTHORITY FROM SIGNALLER



CHELTENHAM

GRADIENT

1 IN 75

LEVEL

1 IN 40

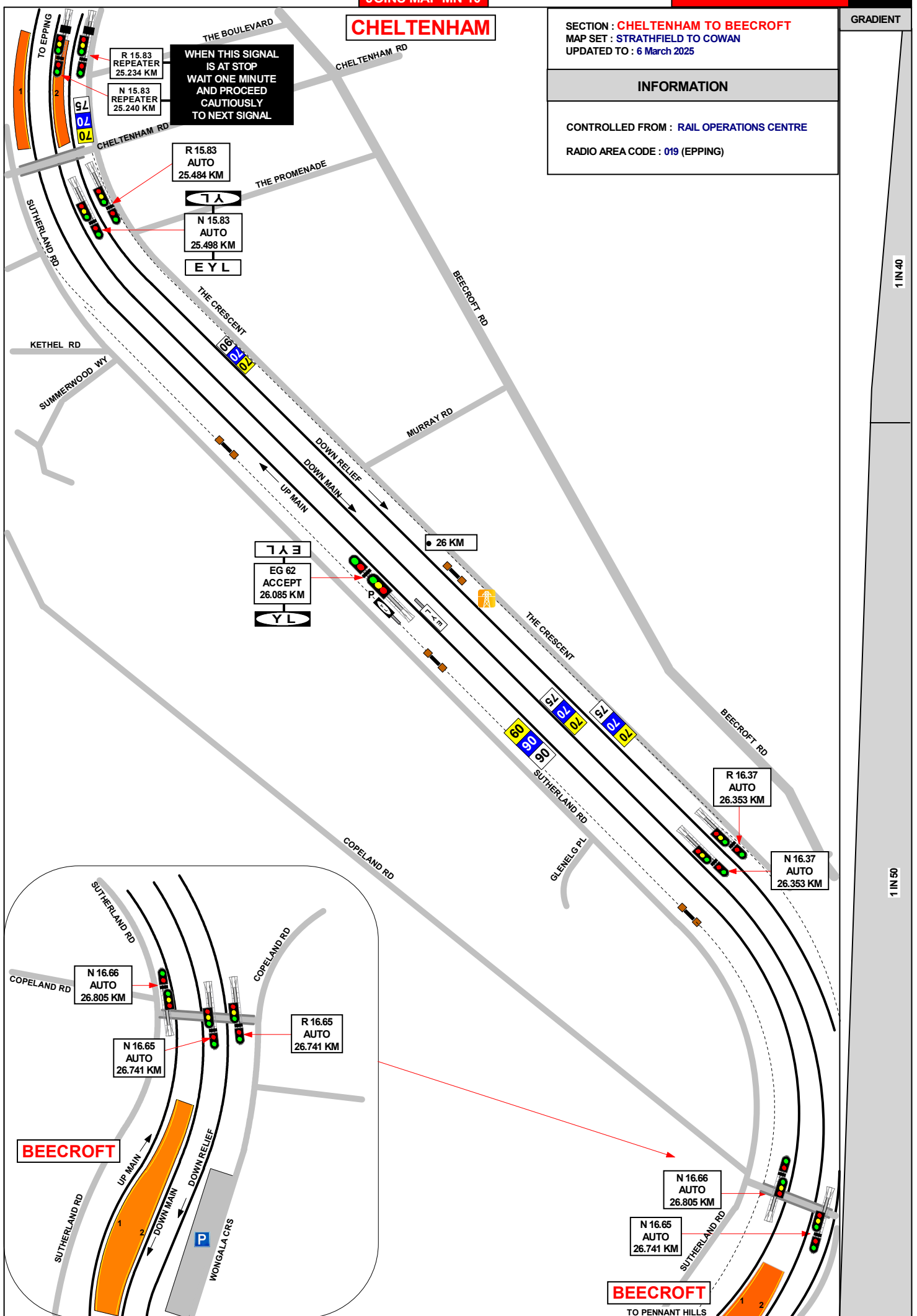
**CHELTENHAM**

SECTION : **CHELTENHAM TO BEECROFT**  
MAP SET : **STRATHFIELD TO COWAN**  
UPDATED TO : 6 March 2025

GRADIENT

**INFORMATION**

CONTROLLED FROM : **RAIL OPERATIONS CENTRE**  
RADIO AREA CODE : 019 (EPPING)



1 IN 40

1 IN 50

SECTION : **BEECROFT TO PENNANT HILLS**  
MAP SET : STRATHFIELD TO COWAN  
UPDATED TO : 6 March 2025

**INFORMATION**

CONTROLLED FROM : **RAIL OPERATIONS CENTRE**  
RADIO AREA CODE : **019 (EPPING)**

GRADIENT

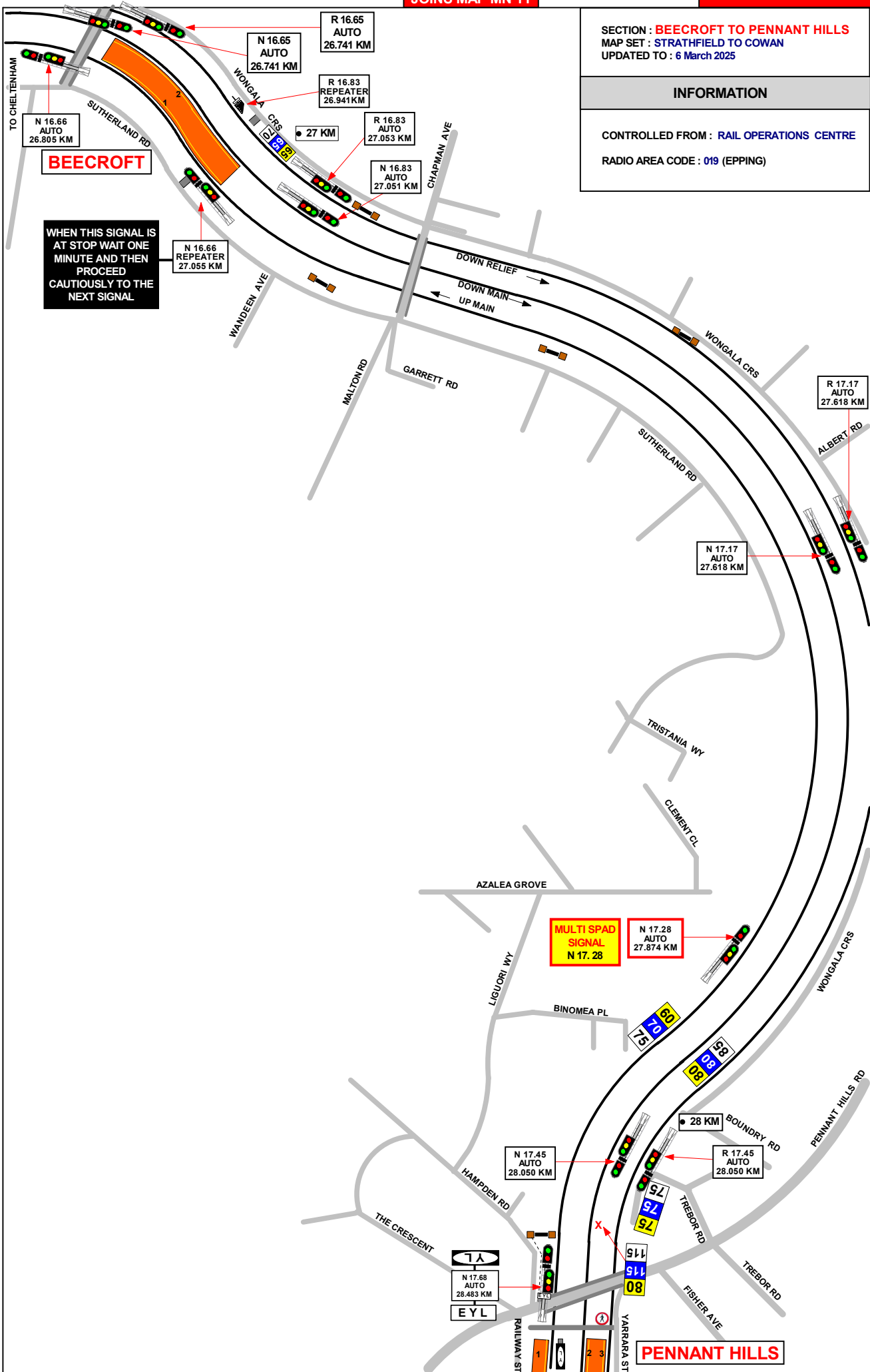
1 IN 50

1 IN 75

1 IN 55

1 IN 44

LEVEL



WHEN THIS SIGNAL IS AT STOP WAIT ONE MINUTE AND THEN PROCEED CAUTIOUSLY TO THE NEXT SIGNAL

**MULTI SPAD SIGNAL**  
N 17.28

SECTION : PENNANT HILLS TO THORNLEIGH  
MAP SET : STRATHFIELD TO COWAN  
UPDATED TO : 6 March 2025

INFORMATION

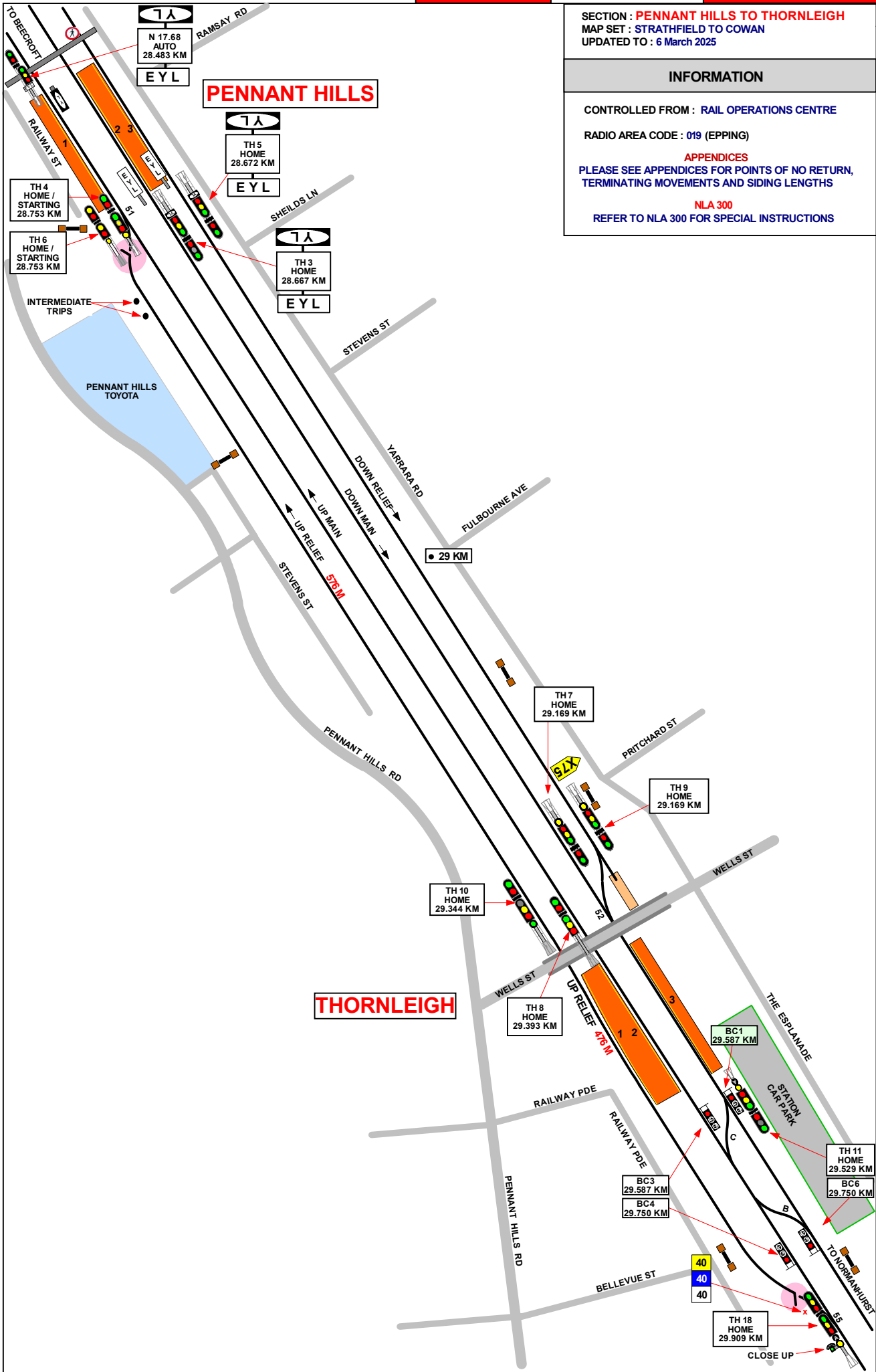
CONTROLLED FROM : RAIL OPERATIONS CENTRE

RADIO AREA CODE : 019 (EPPING)

APPENDICES  
PLEASE SEE APPENDICES FOR POINTS OF NO RETURN,  
TERMINATING MOVEMENTS AND SIDING LENGTHS

NLA 300  
REFER TO NLA 300 FOR SPECIAL INSTRUCTIONS

GRADIENT
1 IN 44
LEVEL
1 IN 220
1 IN 163
LEVEL
1 IN 200
LEVEL
1 IN 66



SECTION : THORNLEIGH TO NORMANHURST  
MAP SET : STRATHFIELD TO COWAN  
UPDATED TO : 6 March 2025

INFORMATION

CONTROLLED FROM : RAIL OPERATIONS CENTRE  
RADIO AREA CODE : 019 (EPPING)  
017 (HORNSBY)

NLA 300  
REFER TO NLA 300 FOR SPECIAL INSTRUCTIONS

THORNLEIGH

GRADIENT

1 IN 200  
LEVEL  
1 IN 66

1 IN 50

1 IN 75

1 IN 132

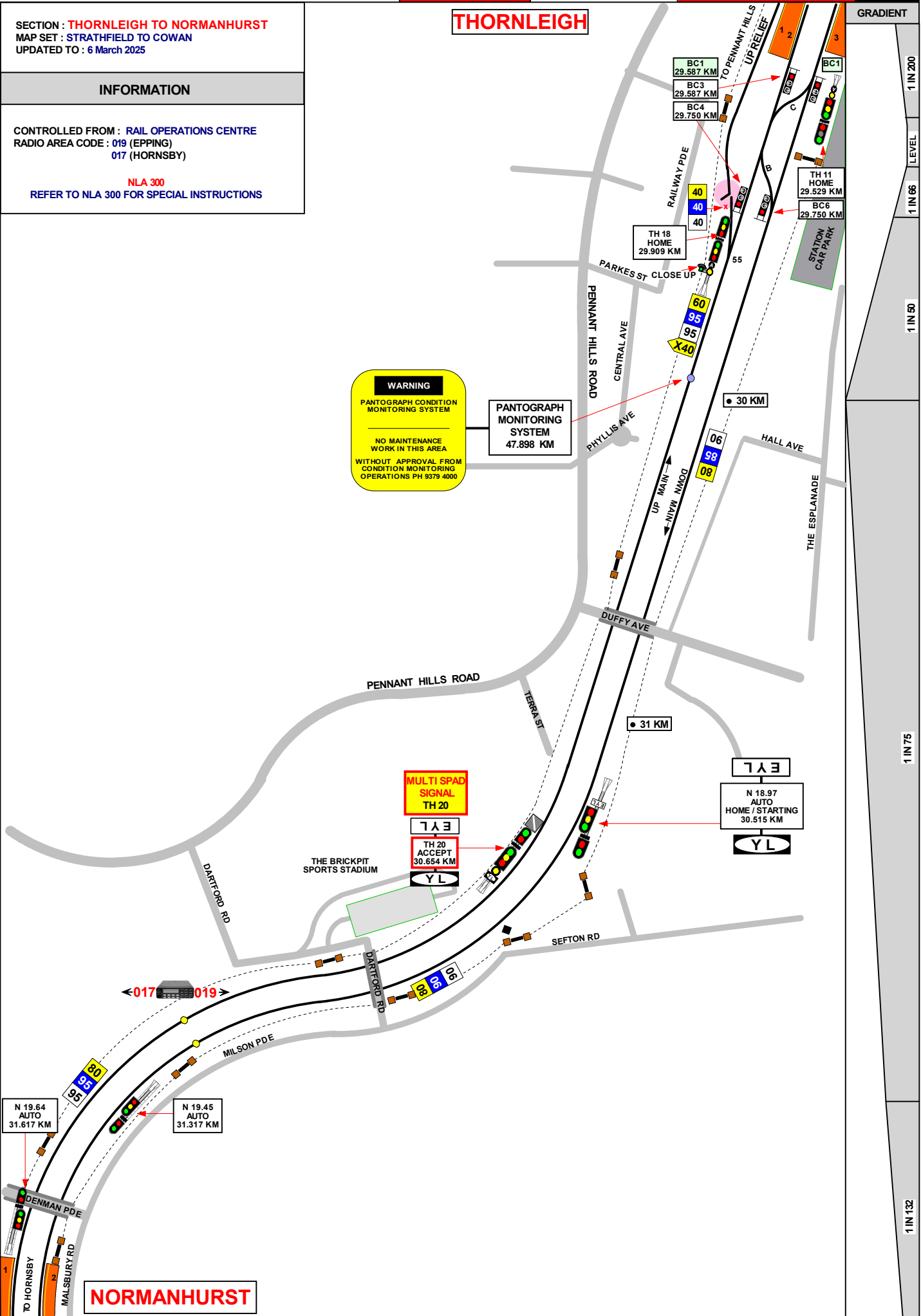
**WARNING**  
PANTOGRAPH CONDITION MONITORING SYSTEM  
NO MAINTENANCE WORK IN THIS AREA  
WITHOUT APPROVAL FROM CONDITION MONITORING OPERATIONS PH 9379 4000

PANTOGRAPH MONITORING SYSTEM  
47.898 KM

MULTI SPAD SIGNAL  
TH 20

E Y L  
TH 20 ACCEPT  
30.654 KM  
Y L

E Y L  
N 18.97 AUTO HOME / STARTING  
30.515 KM  
Y L



NORMANHURST

**NORMANHURST**

**TONNAGE SIGNAL TRAINS OF OVER PRESCRIBED LOAD TO WAIT UNTIL SIGNAL IS AT FULL CLEAR**

SECTION : **NORMANHURST TO HORNSBY**  
 MAP SET : **CENTRAL TO HORNSBY VIA SHORE**  
 PAGE: 1 OF 5  
 UPDATED TO : 6 March 2025

**INFORMATION**

CONTROLLED FROM : **RAIL OPERATIONS CENTRE**  
 RADIO AREA CODE : 019 (EPPING)  
 017 (HORNSBY)

**APPENDICES**

PLEASE SEE APPENDICES FOR POINTS OF NO RETURN, TERMINATING MOVEMENTS AND SIDING LENGTHS

SIGNAL	DESTINATION	INDICATION
HY 21	DOWN MAIN (M)	-
HY 27	DOWN MAIN (S)	4
	UP MAIN (S)	3
	DOWN SHORE (S)	2
	UP SHORE (S)	1

SIGNAL	DESTINATION	INDICATION
HY 17	DOWN RELIEF (M)	R
	DOWN RELIEF (S)	DR
	DOWN MAIN (M)	M
	DOWN MAIN (S)	DM

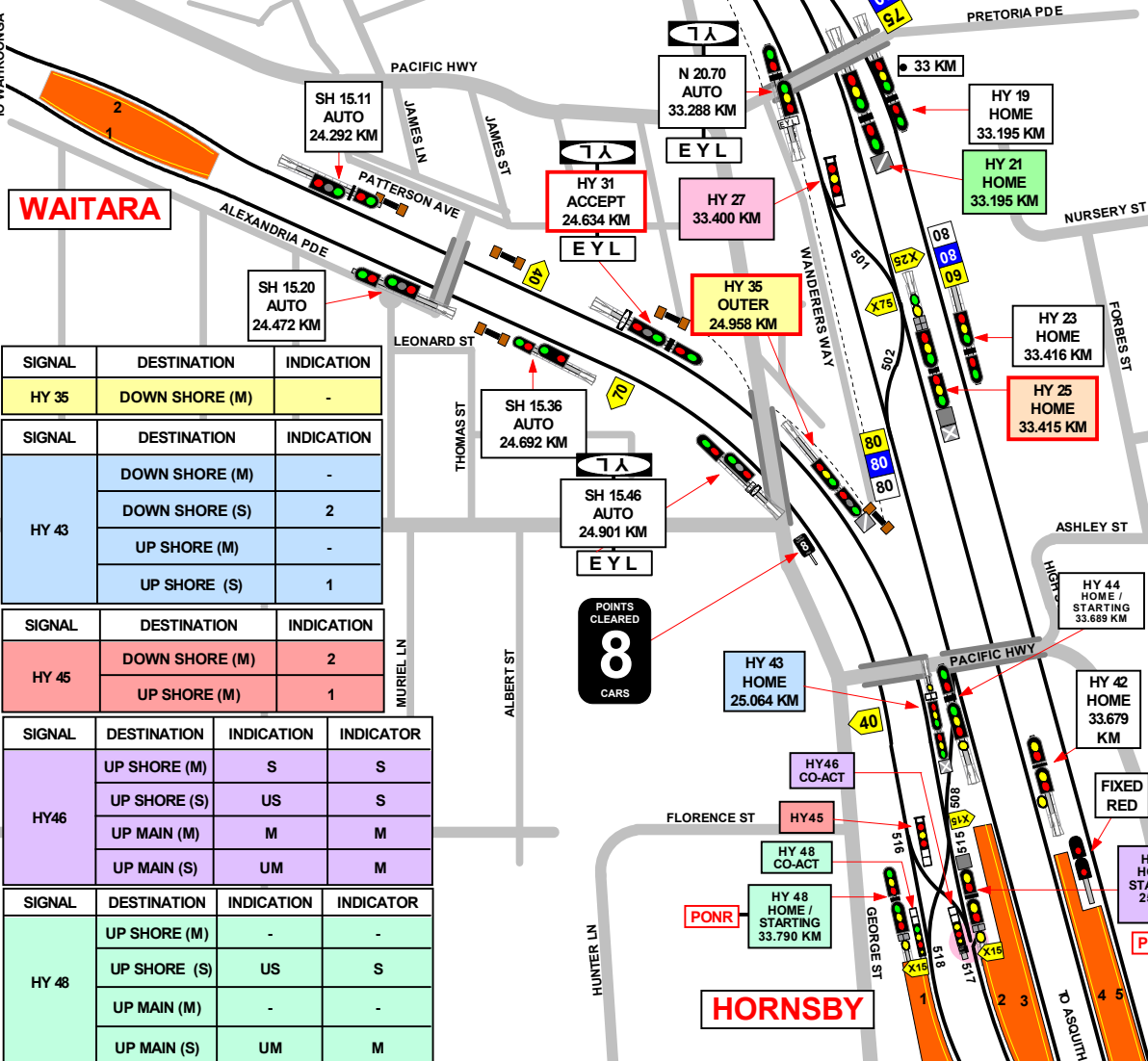
SIGNAL	DESTINATION	INDICATION
HY 25	DOWN MAIN (M)	-
	DOWN MAIN (S)	4
	UP MAIN (M)	3
	UP MAIN (S)	3
	DOWN SHORE (M)	2
	DOWN SHORE (S)	2
	UP SHORE (M)	1
UP SHORE (S)	1	

**MULTI SPAD SIGNAL HY 17**    **MULTI SPAD SIGNAL HY 25**    **MULTI SPAD SIGNAL HY 31**

**MULTI SPAD SIGNAL HY 35**

JOINS MAP NS 20

NORTH SHORE GRADIENT



SIGNAL	DESTINATION	INDICATION
HY 35	DOWN SHORE (M)	-

SIGNAL	DESTINATION	INDICATION
HY 43	DOWN SHORE (M)	-
	DOWN SHORE (S)	2
	UP SHORE (M)	-
	UP SHORE (S)	1

SIGNAL	DESTINATION	INDICATION
HY 45	DOWN SHORE (M)	2
	UP SHORE (M)	1

SIGNAL	DESTINATION	INDICATION	INDICATOR
HY 46	UP SHORE (M)	S	S
	UP SHORE (S)	US	S
	UP MAIN (M)	M	M
	UP MAIN (S)	UM	M

SIGNAL	DESTINATION	INDICATION	INDICATOR
HY 48	UP SHORE (M)	-	-
	UP SHORE (S)	US	S
	UP MAIN (M)	-	-
	UP MAIN (S)	UM	M

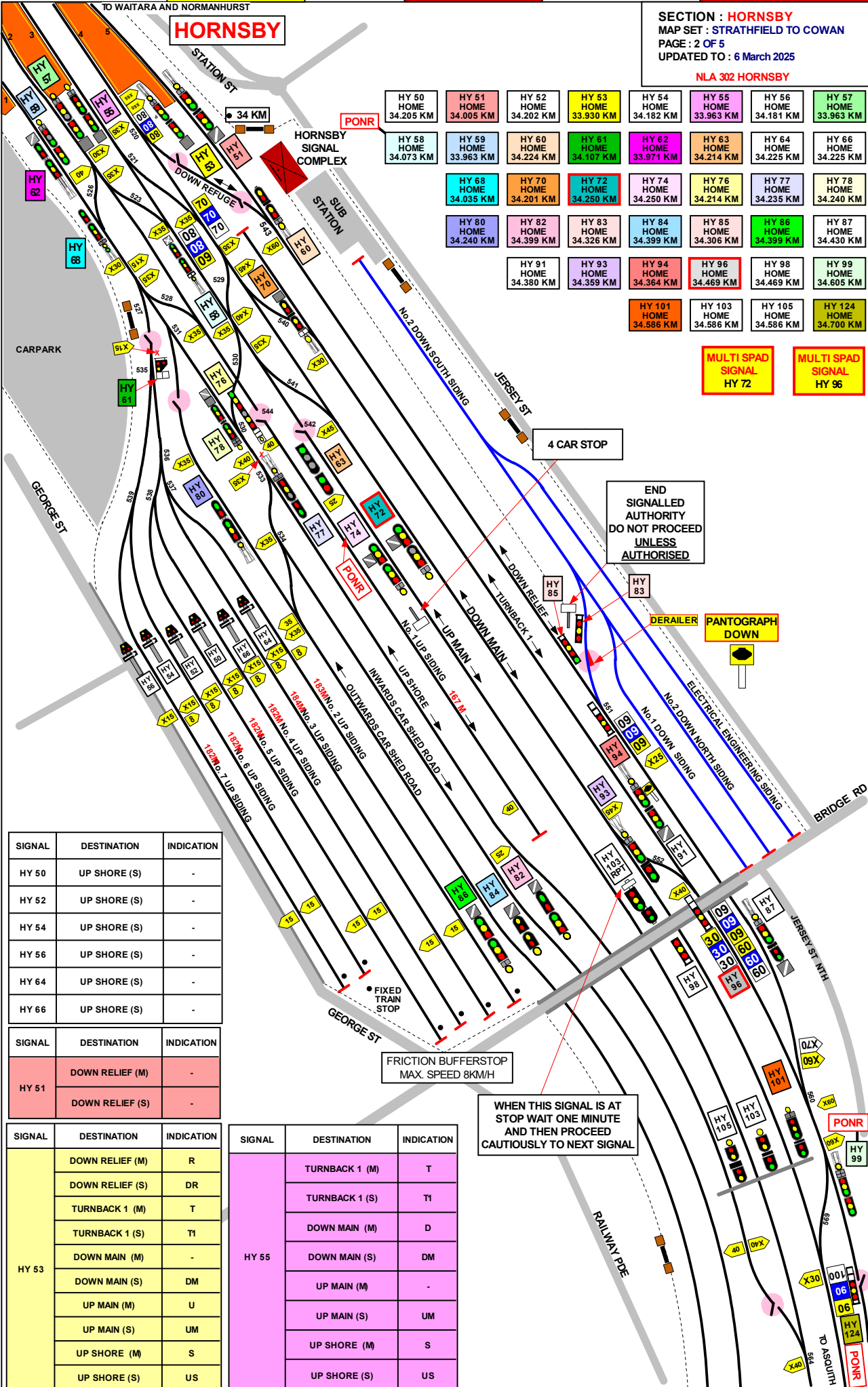
SECTION : HORNSBY  
 MAP SET : STRATHFIELD TO COWAN  
 PAGE : 2 OF 5  
 UPDATED TO : 6 March 2025

NLA 302 HORNSBY

HY 50 HOME 34.205 KM	HY 51 HOME 34.005 KM	HY 52 HOME 34.202 KM	HY 53 HOME 33.930 KM	HY 54 HOME 34.182 KM	HY 55 HOME 33.963 KM	HY 56 HOME 34.181 KM	HY 57 HOME 33.963 KM
HY 58 HOME 34.073 KM	HY 59 HOME 33.963 KM	HY 60 HOME 34.224 KM	HY 61 HOME 34.107 KM	HY 62 HOME 33.971 KM	HY 63 HOME 34.214 KM	HY 64 HOME 34.225 KM	HY 66 HOME 34.225 KM
HY 68 HOME 34.035 KM	HY 70 HOME 34.201 KM	HY 72 HOME 34.250 KM	HY 74 HOME 34.250 KM	HY 76 HOME 34.214 KM	HY 77 HOME 34.235 KM	HY 78 HOME 34.240 KM	
HY 80 HOME 34.240 KM	HY 82 HOME 34.399 KM	HY 83 HOME 34.326 KM	HY 84 HOME 34.399 KM	HY 85 HOME 34.306 KM	HY 86 HOME 34.399 KM	HY 87 HOME 34.430 KM	
HY 91 HOME 34.380 KM	HY 93 HOME 34.359 KM	HY 94 HOME 34.364 KM	HY 96 HOME 34.469 KM	HY 98 HOME 34.469 KM	HY 99 HOME 34.605 KM		
	HY 101 HOME 34.586 KM	HY 103 HOME 34.586 KM	HY 105 HOME 34.586 KM	HY 124 HOME 34.700 KM			

MULTI SPAD SIGNAL  
HY 72

MULTI SPAD SIGNAL  
HY 96



SIGNAL	DESTINATION	INDICATION
HY 50	UP SHORE (S)	-
HY 52	UP SHORE (S)	-
HY 54	UP SHORE (S)	-
HY 56	UP SHORE (S)	-
HY 64	UP SHORE (S)	-
HY 66	UP SHORE (S)	-

SIGNAL	DESTINATION	INDICATION
HY 51	DOWN RELIEF (M)	-
	DOWN RELIEF (S)	-

SIGNAL	DESTINATION	INDICATION
HY 53	DOWN RELIEF (M)	R
	DOWN RELIEF (S)	DR
	TURNBACK 1 (M)	T
	TURNBACK 1 (S)	T1
	DOWN MAIN (M)	-
	DOWN MAIN (S)	DM
	UP MAIN (M)	U
	UP MAIN (S)	UM
HY 55	UP SHORE (M)	S
	UP SHORE (S)	US

SIGNAL	DESTINATION	INDICATION
HY 55	TURNBACK 1 (M)	T
	TURNBACK 1 (S)	T1
	DOWN MAIN (M)	D
	DOWN MAIN (S)	DM
	UP MAIN (M)	-
	UP MAIN (S)	UM
	UP SHORE (M)	S
	UP SHORE (S)	US

WHEN THIS SIGNAL IS AT STOP WAIT ONE MINUTE AND THEN PROCEED CAUTIOUSLY TO NEXT SIGNAL

FIXED TRAIN STOP  
 FRICTION BUFFERSTOP  
 MAX. SPEED 8KM/H

END SIGNALLED AUTHORITY DO NOT PROCEED UNLESS AUTHORISED

DERAILER  
 PANTOGRAPH DOWN

4 CAR STOP

1 IN 413

1 IN 725

1 IN 470

1 IN 1000

1 IN 400

SECTION : **HORNSBY YARD**  
 PAGE: 3 OF 5  
 UPDATED TO : 6 March 2025

**INFORMATION**

**HORNSBY YARD**

THE HORNSBY INTERLOCKING CONSISTS OF THE AREA BOUNDED  
 DOWN MAIN ACCEPT SIGNAL No. **HY 21**  
 DOWN SHORE ACCEPT SIGNAL No. **HY 31**  
 UP MAIN ACCEPT SIGNAL No. **HY 136**

YARD WORKING IS IN OPERATION WITHIN THE  
 HORNSBY INTERLOCKING AND ALL TRAIN MOVEMENTS ARE  
 UNDER THE CONTROL OF THE SIGNALLER AT HORNSBY

COLOURED LIGHTS INDICATOR SIGNALS ARE PROVIDED  
 WHERE VISIBILITY OF RUNNING SIGNALS IS OBSTRUCTED AS  
 FOLLOWS SIGNAL **HY 46** THE INDICATORS ALSO HAS A ROUTE  
 INDICATOR ATTACHED TO IT, A LISTING OF  
 INDICATIONS CAN BE FOUND IN THE TABLES BELOW

SIGNAL	DESTINATION	INDICATION
HY 57	DOWN MAIN (M)	D
	DOWN MAIN (S)	DM
	UP MAIN (M)	U
	UP MAIN (S)	UM
	DOWN SHORE (M)	-
	DOWN SHORE (S)	DS
	UP SHORE (M)	S
	UP SHORE (S)	US
	UP SIDING (S)	SG

SIGNAL	DESTINATION	INDICATION
HY 70	UP MAIN (M)	3
	UP MAIN (S)	3
	DOWN MAIN (M)	4
	DOWN MAIN (S)	4

SIGNAL	DESTINATION	INDICATION
HY 72	UP MAIN (M)	-
	UP MAIN (S)	UM
	DOWN MAIN (M)	-
	DOWN MAIN (S)	4

SIGNAL	DESTINATION	INDICATION
HY 58	DOWN SHORE (M)	-
	DOWN SHORE (S)	2
	UP MAIN (M)	-
	UP MAIN (S)	3

SIGNAL	DESTINATION	INDICATION
HY 74	UP MAIN (M)	-
	UP MAIN (S)	UM
	DOWN MAIN (M)	-
	DOWN MAIN (S)	4

SIGNAL	DESTINATION	INDICATION
HY 59	DOWN SHORE (M)	-
	DOWN SHORE (S)	DS
	UP SHORE (M)	-
	UP SHORE (S)	US
	UP SIDING (S)	SG

SIGNAL	DESTINATION	INDICATION
HY 76	UP SHORE (M)	-
	UP SHORE (S)	U
	DOWN SHORE (M)	-
	DOWN SHORE (S)	2

SIGNAL	DESTINATION	INDICATION
HY 60	DOWN MAIN (M)	-
	DOWN MAIN (S)	4
	DOWN RELIEF (S)	5

SIGNAL	DESTINATION	INDICATION
HY 77	UP SHORE (M)	-
	UP SHORE (S)	US
	INWARDS CARSHED (S)	IC

SIGNAL	DESTINATION	INDICATION
HY 61	No.2 UP SIDING (S)	U2
	No.3 UP SIDING (S)	U3
	No.4 UP SIDING (S)	U4
	No.5 UP SIDING (S)	U5
	No.6 UP SIDING (S)	U6
	No.7 UP SIDING (S)	U7

SIGNAL	DESTINATION	INDICATION
HY 78	UP SHORE (M)	-
	UP SHORE (S)	US
	UP MAIN (M)	U
	UP MAIN (S)	UM
	DOWN MAIN (M)	4
	DOWN MAIN (S)	4

SIGNAL	DESTINATION	INDICATION
HY 62	UP SHORE (M)	-

SIGNAL	DESTINATION	INDICATION
HY 80	UP SHORE (M)	-
	UP SHORE (S)	-

SIGNAL	DESTINATION	INDICATION
HY 63	NO. 1 UP SIDING (M)	-

SIGNAL	DESTINATION	INDICATION
HY 82	UP SHORE (M)	-
	UP SHORE (S)	-

SIGNAL	DESTINATION	INDICATION
HY 68	UP SHORE (M)	-
	UP SHORE (S)	US
	DOWN SHORE (S)	2

SIGNAL	DESTINATION	INDICATION
HY 83	DOWN RELIEF (S)	-

SIGNAL	DESTINATION	INDICATION
HY 84	UP SHORE (M)	-
	UP SHORE (S)	-

SIGNAL	DESTINATION	INDICATION
HY 85	DOWN RELIEF (S)	-

SIGNAL	DESTINATION	INDICATION
HY 86	OUTWARDS CAR SHED (M)	-
	OUTWARDS CAR SHED	OC
	UP SHORE (M)	-
	UP SHORE (S)	US

SIGNAL	DESTINATION	INDICATION
HY 93	TURNBACK 1 (S)	T1
	DOWN MAIN (M)	-
	DOWN MAIN (S)	DM

SIGNAL	DESTINATION	INDICATION
HY 94	DOWN RELIEF (M)	DR
	DOWN SIDING (S)	DS

SIGNAL	DESTINATION	INDICATION
HY 96	DOWN MAIN (S)	DM
	TURNBACK 1 (S)	T1

SIGNAL	DESTINATION	INDICATION
HY 99	DOWN RELIEF (M)	-
	DOWN RELIEF (S)	DR
	DOWN MAIN (M)	-
	DOWN MAIN (S)	DM
	UP MAIN (S)	UM

SIGNAL	DESTINATION	INDICATION
HY 101	DOWN MAIN (M)	-
	DOWN MAIN (S)	DM
	UP MAIN (S)	UM

SIGNAL	DESTINATION	INDICATION
HY 124	TURNBACK 1 (S)	T1
	DOWN RELIEF (S)	DR



SECTION : HORNSBY  
 PAGE : 5 OF 5  
 UPDATED TO : 6 March 2025

SIGNAL	DESTINATION	INDICATION
HY 99	DOWN RELIEF (M)	-
	DOWN RELIEF (S)	DR
	DOWN MAIN (M)	-
	DOWN MAIN (S)	DM
	UP MAIN (S)	UM

SIGNAL	DESTINATION	INDICATION
HY 132	UP MAIN (M)	-
	UP MAIN (S)	UM
	DOWN MAIN (M)	D
	DOWN MAIN (S)	DM
	TURNBACK 1 (M)	T
	TURNBACK 1 (S)	T1
	DOWN RELIEF (M)	R
	DOWN RELIEF (S)	DR

SIGNAL	DESTINATION	INDICATION
HY 106	UP SHORE (M)	-
	UP SHORE (S)	US
	UP MAIN (M)	-
	UP MAIN (S)	UM

SIGNAL	DESTINATION	INDICATION
HY 135	DOWN MAIN (M)	-
	DOWN MAIN (S)	-

SIGNAL	DESTINATION	INDICATION
HY 124	TURNBACK 1 (S)	T1
	DOWN RELIEF (S)	DR

SIGNAL	DESTINATION	INDICATION
HY 129	UP MAIN (S)	UM
	CAR SHEDS (S)	CS

SIGNAL	DESTINATION	INDICATION
HY 138	UP MAIN (S)	M
	-	-
	DOWN RELIEF(S)	R

SIGNAL	DESTINATION	INDICATION
HY 130	UP MAIN (S)	UM
	DOWN MAIN (S)	DM
	TURNBACK 1 (S)	T1
	DOWN RELIEF (S)	DR

SECTION : ASQUITH TO MT COLAH  
MAP SET : STRATHFIELD TO COWAN  
UPDATED TO : 6 March 2025

INFORMATION

CONTROLLED FROM : RAIL OPERATIONS CENTRE  
RADIO AREA CODE : 017 (HORNSBY)

GRADIENT

1 IN 78

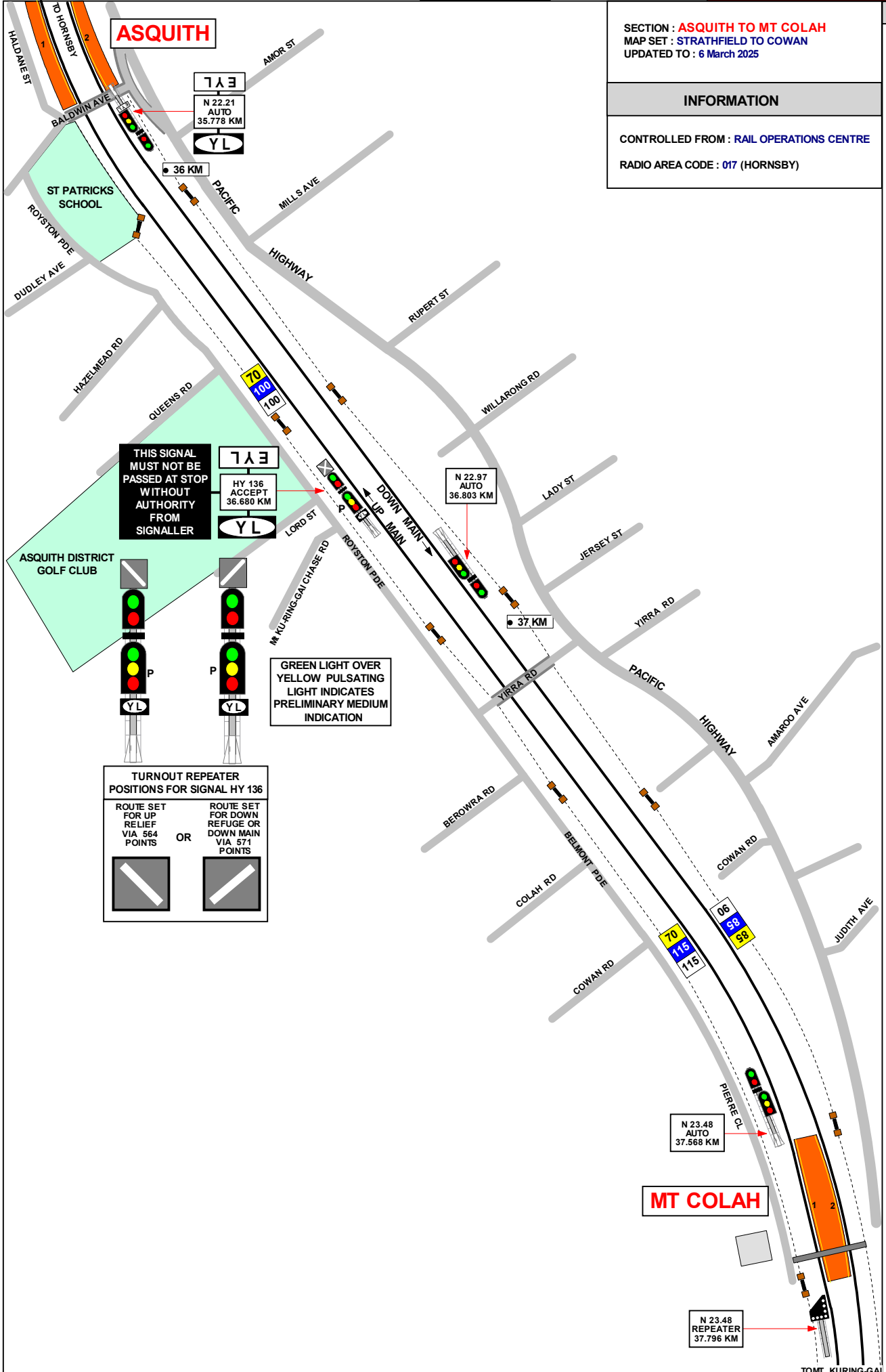
1 IN 64

LEVEL

1 IN 48

1 IN 65

LEVEL



ASQUITH

MT COLAH

THIS SIGNAL MUST NOT BE PASSED AT STOP WITHOUT AUTHORITY FROM SIGNALLER

GREEN LIGHT OVER YELLOW PULSATING LIGHT INDICATES PRELIMINARY MEDIUM INDICATION

TURNOUT REPEATER POSITIONS FOR SIGNAL HY 136

ROUTE SET FOR UP RELIEF VIA 564 POINTS	OR	ROUTE SET FOR DOWN REFUGE OR DOWN MAIN VIA 571 POINTS

TO HORNSBY

MT COLAH

SECTION : MT COLAH TO MT KURING- GAI  
MAP SET : STRATHFIELD TO COWAN  
UPDATED TO : 6 March 2025

GRADIENT

INFORMATION

CONTROLLED FROM : RAIL OPERATIONS CENTRE  
RADIO AREA CODE : 017 (HORNSBY)

NLA 310 HORNSBY - GOSFORD  
REFER TO NLA 310 FOR MORE INSTRUCTIONS

LEVEL

SIGNAL KEY SWITCH PROJECT  
MOUNT KURING-GAI

UP and DOWN BBTs, REPORT TO HOMEBSH  
CONTROL CENTRE ( HORNSBY NORTH PANEL )

**WARNING**

WAYSIDE DETECTION SYSTEM  
Mt KURING-GAI 39.658 kms

NO TRACK WORK IN AREA

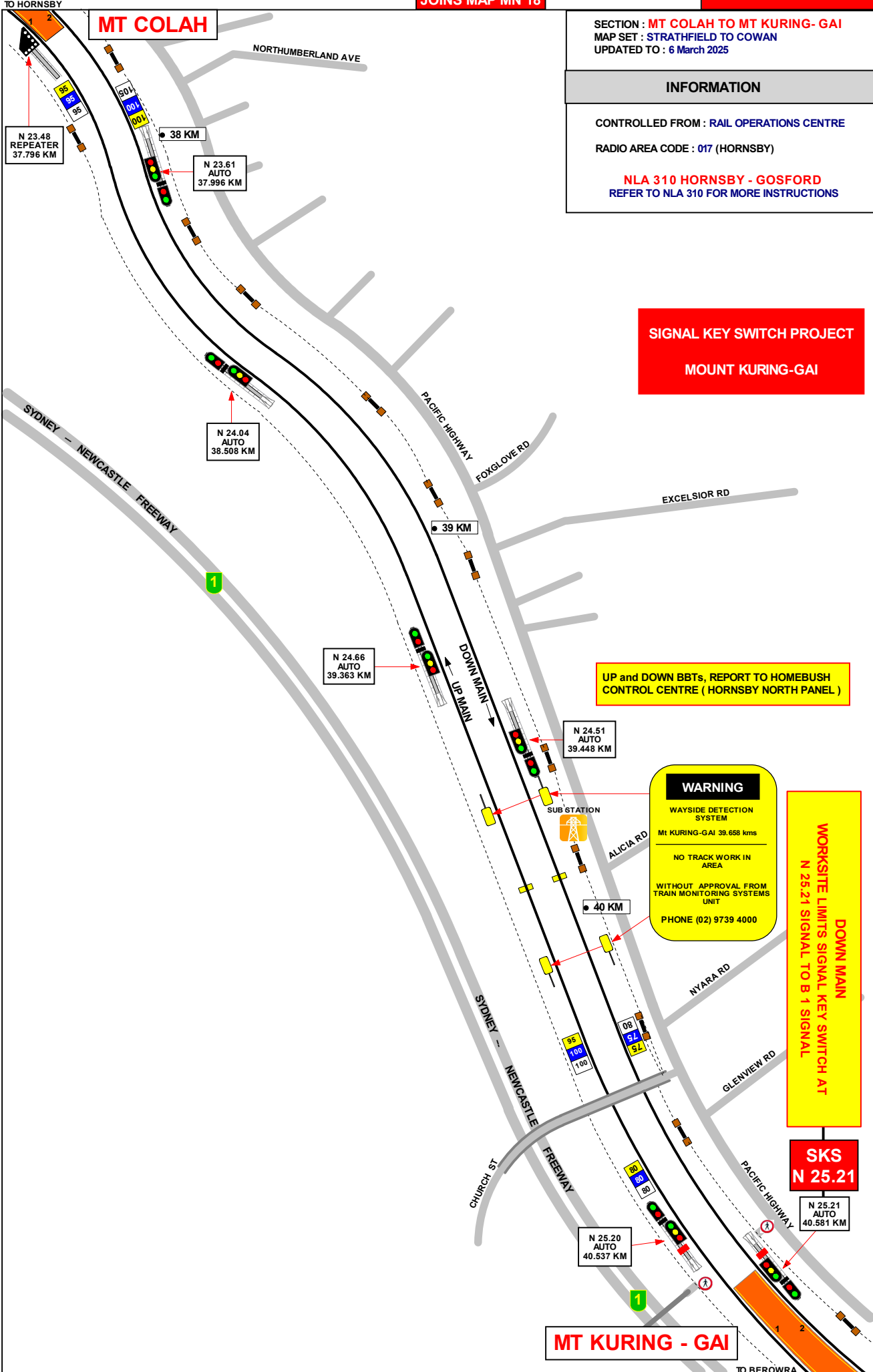
WITHOUT APPROVAL FROM TRAIN MONITORING SYSTEMS UNIT

PHONE (02) 9739 4000

DOWN MAIN  
WORKSITE LIMITS SIGNAL KEY SWITCH AT  
N 25.21 SIGNAL TO B 1 SIGNAL

SKS  
N 25.21

MT KURING - GAI



1 IN 100

1 IN 300

1 IN 40

1 IN 275

1 IN 240

1 IN 220

TO BEROWRA

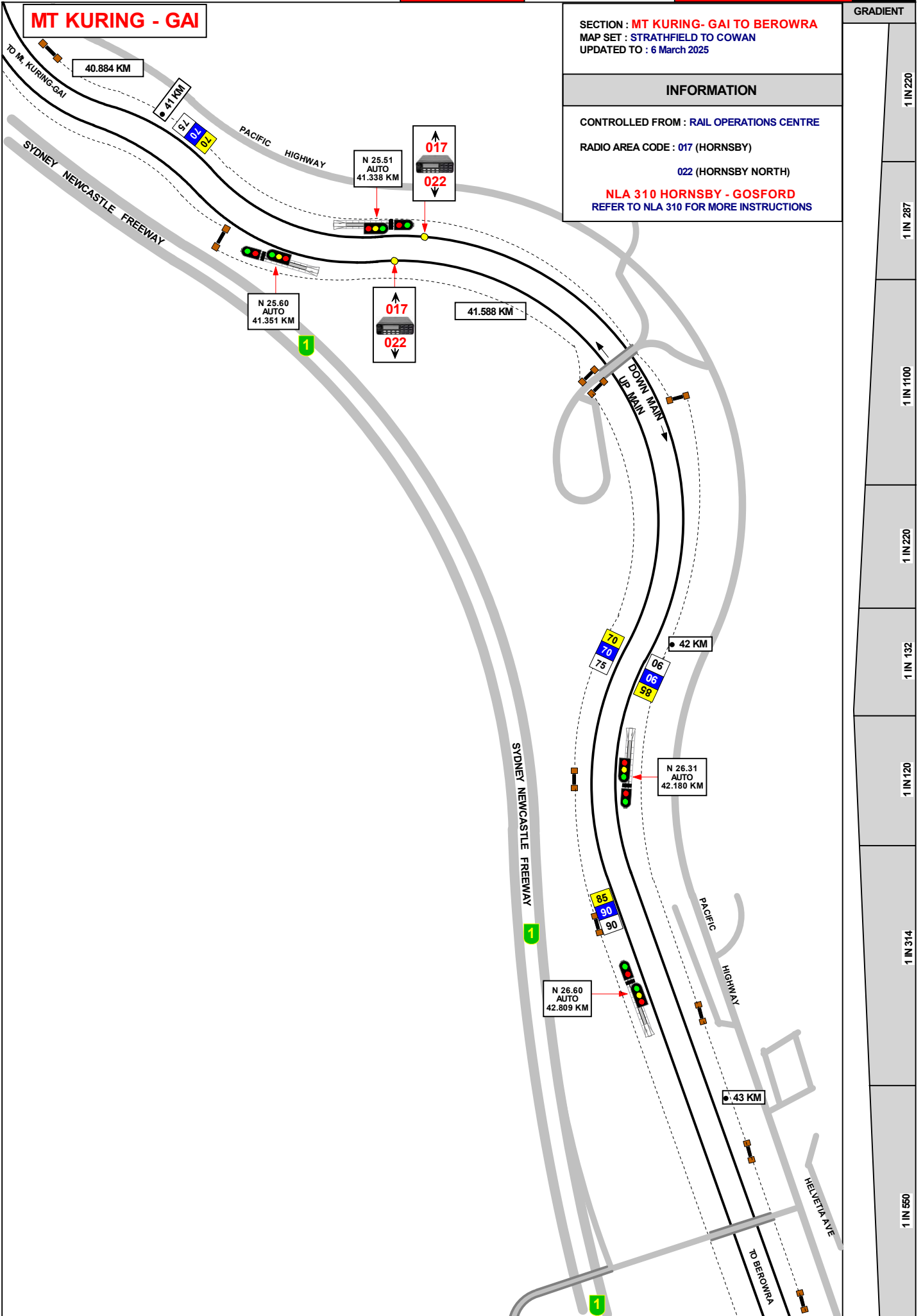
MT KURING - GAI

SECTION : MT KURING- GAI TO BEROWRA  
MAP SET : STRATHFIELD TO COWAN  
UPDATED TO : 6 March 2025

GRADIENT

INFORMATION

CONTROLLED FROM : RAIL OPERATIONS CENTRE  
RADIO AREA CODE : 017 (HORNSBY)  
022 (HORNSBY NORTH)  
NLA 310 HORNSBY - GOSFORD  
REFER TO NLA 310 FOR MORE INSTRUCTIONS



SECTION : MT KURING-GAI TO BEROWRA  
MAP SET : STRATHFIELD TO COWAN  
UPDATED TO : 6 March 2025

INFORMATION

CONTROLLED FROM : RAIL OPERATIONS CENTRE

RADIO AREA CODE : 017 (HORNSBY)

022 (HORNSBY NORTH)

APPENDICES  
PLEASE SEE APPENDICES FOR POINTS OF NO RETURN,  
TERMINATING MOVEMENTS AND SIDING LENGTHS

NLA 310 HORNSBY - GOSFORD  
REFER TO NLA 310 FOR MORE INSTRUCTIONS

GRADIENT

1 IN 550

1 IN 142

1 IN 200

1 IN 134

