

# DRIVERS ROUTE KNOWLEDGE DIAGRAMS

## EASTERN SUBURBS LINE

BONDI JUNCTION

EDGECLIFF

KINGS CROSS

MARTIN PLACE

TOWN HALL

CENTRAL

REDFERN

ERSKINEVILLE

**Effective Date:** January 2026

**Version:** 4.29

### **Explanatory Notes:**

Navigate to your area of interest via the station index or by using links created in Adobe bookmarks.

This document is approved for **route knowledge only**.

**Do not use these diagrams for any safety related purpose** without validating the information against a controlled source or in the field.

Information in these diagrams is uncontrolled.

Please report any updates to  
[gis.support@transport.nsw.gov.au](mailto:gis.support@transport.nsw.gov.au)



**Copyright:** Sydney Trains

**Ownership:** Location Services

**Location:** CM Record No.D2015/580



SIGNAL	DESTINATION	INDICATION
SY 767 ES	DOWN ESR (M)	D
	DOWN ESR (S)	D
	UP ESR (M)	U
	UP ESR (S)	U

**JOINS MAP ESR 02**

SECTION : **BONDI JUNCTION**  
 MAP SET : **BONDI JUNCTION TO ERSKINEVILLE**  
 UPDATED TO : 14 March 2024

CONTROLLED FROM : **RAIL OPERATIONS CENTRE**

RADIO AREA CODE : **007 (SYDENHAM)**

**NLA 106**  
**SEE NLA 106 FOR SPECIAL INSTRUCTIONS**

**APPENDICES**  
 PLEASE SEE APPENDICES FOR POINTS OF NO RETURN,  
 AND TERMINATING MOVEMENTS

## SPECIAL POINTS OF INTEREST

### BONDI JUNCTION

#### STABLING OF TRAINS

WHEN STABLING TRAINS AT BONDI IF A MOTOR CAR HAS A SPRING PARKING BRAKE IT IS NOT NECESSARY TO APPLY THE ADJOINING TRAILER CAR RATCHET PARK BRAKE BUT IF THE MOTOR CAR HAS A RATCHET PARK BRAKE IT IS NECESSARY TO APPLY THE RATCHET PARK BRAKE ON THE ADJOINING TRAILER CAR AS WELL. TWO RED LIGHTS ARE TO BE PLACED ON THE SYDNEY END OF THE TRAIN .

WHEN A TRAIN IS BEING PREPARED FOR SERVICE, THE BRAKES MUST NOT BE RELEASED UNTIL THE TRAIN IS DUE TO DEPART AND A BRAKE PIPE CONTINUITY TEST HAS BEEN CONDUCTED.

IN DOWN STORAGE SIDING ON 8 CAR TRAINS PLEASE ENSURE THAT CAB IS STOPPED ON THE 8 CAR MARKER TO ENSURE ALIGNMENT OF TRANSFER PLATFORM

SIGNALS SY 771, SY 775, SY 778 , SY 776, SY 768 AND SY 770 ALL HAVE A CALLING ON SIGNAL.

#### TRAINS LESS THAN FOUR CARS AND TRACK VEHICLES

WHEN TRAVERSING 908 / 912 AND 907 / 911 POINTS IN THE REVERSE POSITION , LESS THAN FOUR CARS AND TRACK VEHICLES MUST BE BLOCK WORKED BETWEEN SY 767 ES AND SY 783 ES SIGNALS SY 770 ES AND ES 6.48 SIGNALS AS THEY MAY NOT RELIABLY OPERATE THE TRACK CIRCUITS .

#### AUTOMATIC NORMALISING OF CATCH POINTS 910 DOWN STORAGE SIDING AND CATCH POINTS 914 UP STORAGE

WHEN RAIL VEHICLES THAT DO NOT RELIABLY OPERATE TRACK CIRCUITS ARE TO ENTER OR DEPART THE DOWN STORAGE OR UP STORAGE SIDINGS , CATCH POINTS 910 OR 914 MUST BE LOCKED IN POSITION USING THE POINT LEVER TO DISABLE THE AUTOMATIC NORMALISING FACILITY .

SIGNAL	DESTINATION	INDICATION
SY 775 ES	DOWN STORAGE SIDING (M)	S
	DOWN STORAGE SIDING (S)	S
	TERMINAL ROAD (M)	T
	TERMINAL ROAD (S)	T

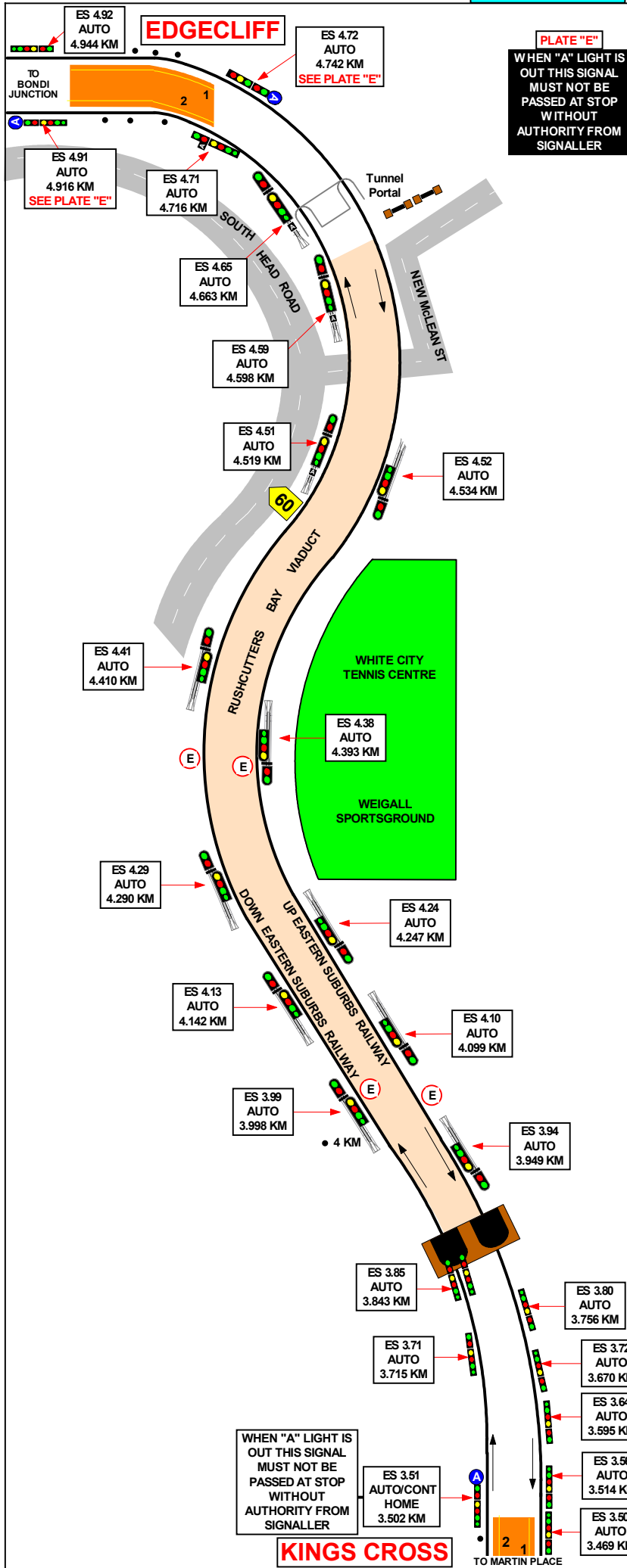
SIGNAL	DESTINATION	INDICATION
SY 776 ES	UP ESR (M)	U
	UP ESR (S)	U
	DOWN ESR (M)	D
	DOWN ESR (S)	D

SIGNAL	DESTINATION	INDICATION
SY 770 ES	UP ESR(M)	-
	UP ESR (S)	-

SIGNAL	DESTINATION	INDICATION
SY 785 ES	TERMINAL ROAD (M)	T
	TERMINAL ROAD (S)	T
	UP STORAGE ROAD (M)	S
	UP STORAGE ROAD (S)	S

SIGNAL	DESTINATION	INDICATION
SY 767 ES	DOWN ESR (M)	D
	DOWN ESR (S)	D
	UP ESR (M)	U
	UP ESR (S)	U

SIGNAL	DESTINATION	INDICATION
SY 768 ES	UP ESR(M)	-
	UP ESR (S)	-



SECTION : **EDGECLIFF TO KINGS CROSS**  
 MAP SET : **BONDJ JUNCTION TO ERSKINEVILLE**  
 UPDATED TO : 14 March 2024

## INFORMATION

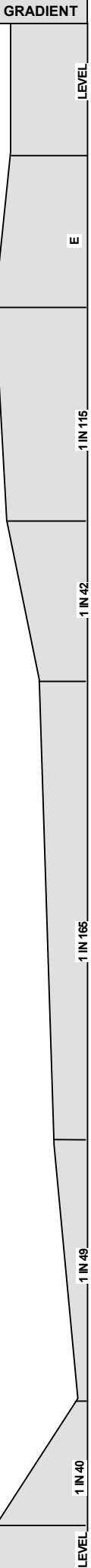
CONTROLLED FROM : **RAIL OPERATIONS CENTRE**

RADIO AREA CODE : **007 (SYDENHAM)**

## SPECIAL POINTS OF INTEREST

THE RAILS OF THE DOWN AND UP EASTERN SUBURBS RAILWAY ON THE WOOLLOOMOOLOO AND RUSHCUTTERS BAY VIADUCTS ARE FITTED WITH SPECIAL MODIFIED EXPANSION JOINTS NO CLIPPING OR LOCKING REQUIRED

**NLA 106**  
 SEE NLA 106 FOR SPECIAL INSTRUCTIONS



**KINGS CROSS**

TO EDGECLIFF

ES 3.29  
AUTO  
3.298 KMES 3.25  
AUTO  
3.247 KMES 3.19  
AUTO  
3.183 KMES 3.09  
AUTO  
3.096 KMES 3.01  
AUTO  
3.014 KMES 2.85  
AUTO  
2.856 KMES 2.88  
AUTO  
2.881 KMES 2.70  
AUTO  
2.760 KMES 2.71  
AUTO  
2.706 KMES 2.64  
AUTO  
2.639 KMES 2.22  
AUTO  
2.235 KMES 2.16  
AUTO  
2.184 KM**MARTIN PLACE**SY 723 ES  
HOME /  
STARTING  
2.193 KMSY 721 ES  
AUTO/CONT  
ACCEPT  
1.995 KMES 1.96  
AUTO/CONT  
HOME /  
STARTING  
1.980 KMES 1.95  
AUTO  
1.950 KMES 1.87  
AUTO  
1.870 KMWHEN "A" LIGHT IS  
OUT THIS SIGNAL  
MUST NOT BE  
PASSED AT STOP  
WITHOUT  
AUTHORITY FROM  
SIGNALLERES 3.32  
AUTO/CONT  
HOME  
3.273 KMES 3.14  
AUTO  
3.132 KM● 3 KM  
ES 3.00  
AUTO  
3.009 KMTHIS SIGNAL MUST  
NOT BE PASSED AT  
STOP WITHOUT  
AUTHORITY FROM  
SIGNALLERES 2.55  
AUTO  
2.553 KMSY 734 MT  
OH  
2.510 KMSY 730 MT  
HOME  
2.410 KMES 2.39  
AUTO  
2.393 KMES 2.64  
AUTO  
2.639 KMSY 738 ES  
AUTO/CONT  
HOME  
2.551 KMSY 736 ES  
AUTO/CONT  
ACCEPT  
2.471 KMSY 732 ES  
AUTO/CONT  
HOME  
2.310 KMSY 728 ES  
AUTO/CONT  
HOME  
2.309 KMMARTIN PLACE  
CONTROLLED  
FROM  
SYDENHAMWHEN "A" LIGHT IS  
OUT THIS SIGNAL  
MUST NOT BE PASSED  
AT STOP WITHOUT  
AUTHORITY FROM  
SIGNALLERES 1.76  
AUTO  
1.767 KMES 1.64  
AUTO  
1.646 KMES 1.54  
AUTO  
1.546 KMES 1.46  
AUTO  
1.465 KMES 1.36  
AUTO  
1.385 KMES 1.30  
AUTO  
1.329 KM**TOWN HALL**ES 1.51  
AUTO  
1.508 KMWHEN "A" LIGHT IS OUT THIS  
SIGNAL MUST NOT BE PASSED  
AT STOP WITHOUT AUTHORITY  
FROM SIGNALLERES 1.31  
AUTO/CONT  
HOME  
1.300 KM

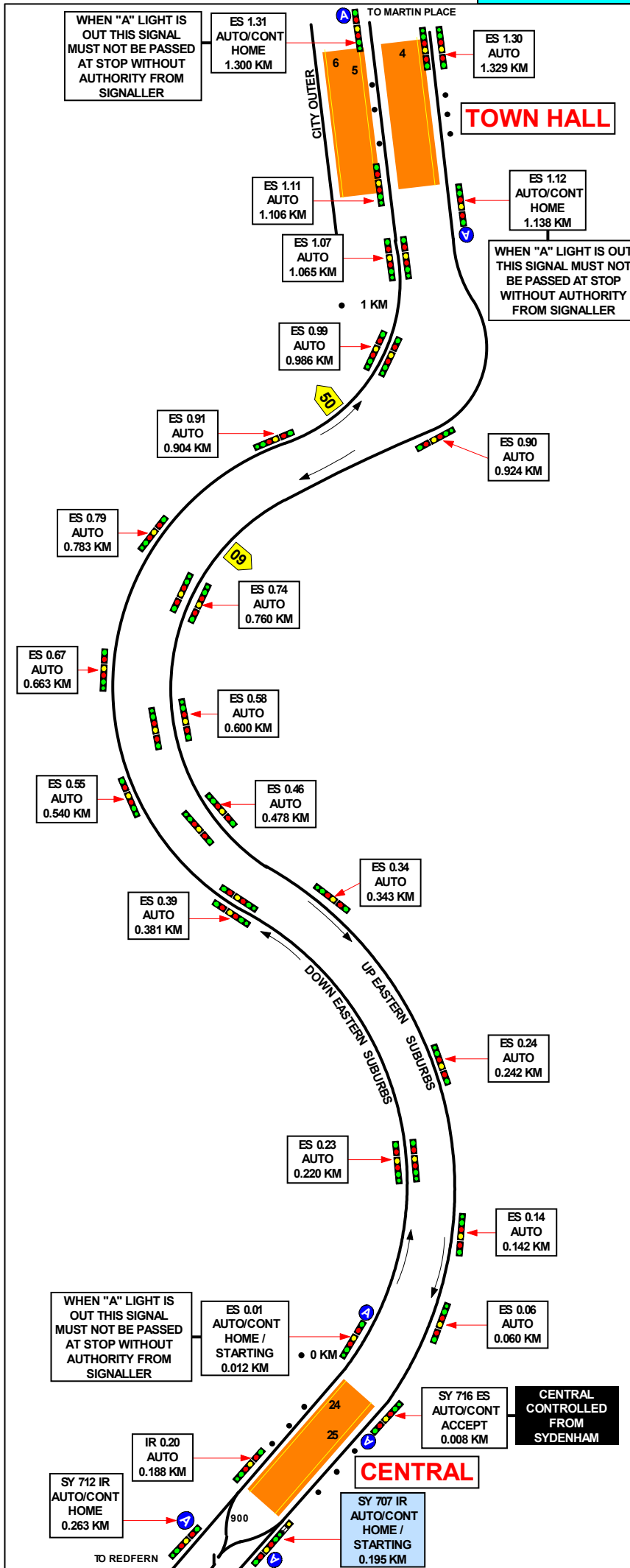
CITY OUTER

SECTION : **KINGS CROSS TO TOWN HALL**  
MAP SET : **BONDI JUNCTION TO ERSKINEVILLE**  
UPDATED TO : 14 March 2024**INFORMATION**

CONTROLLED FROM : RAIL OPERATIONS CENTRE

RADIO AREA CODE : 007 (SYDENHAM)

**SPECIAL POINTS OF INTEREST**THE RAILS OF THE DOWN AND UP EASTERN SUBURBS  
RAILWAY ON THE WOOLLOOMOOLOO AND RUSHCUTTERS  
BAY VIADUCTS ARE FITTED WITH SPECIAL MODIFIED  
EXPANSION JOINTS NO CLIPPING OR LOCKING REQUIRED**MARTIN PLACE**NLA 416  
SEE NLA 106 FOR SPECIAL INSTRUCTIONSAPPENDICES  
PLEASE SEE APPENDICES FOR POINTS OF NO RETURN,  
AND TERMINATING MOVEMENTS



SECTION : **TOWN HALL TO CENTRAL**  
MAP SET : **BONDI JUNCTION TO ERSKINEVILLE**  
UPDATED TO : 14 March 2024

INFORMATION

CONTROLLED FROM : **RAIL OPERATIONS CENTRE**

RADIO AREA CODE : **007 (SYDENHAM)**

**SPECIAL POINTS OF INTEREST**  
**CENTRAL**

WHEN STABLING A TRAIN IN THE TERMINAL ROAD ALL MOTOR CAR HAND / PARKING BRAKES MUST BE APPLIED. SHOULD 4 CARS BE STANDING IN THE TERMINAL ROAD CLEAR OF SIGNAL SY 706 CT, ADDITIONAL 4 CARS MAY PROCEED ON CLEARING OF THE CALLING ON SIGNAL ON SY 707 IR.

**NLA 106**  
**SEE NLA 106 FOR SPECIAL INSTRUCTIONS**

**APPENDICES**  
**PLEASE SEE APPENDICES FOR POINTS OF NO RETURN, AND TERMINATING MOVEMENTS**

SIGNAL	DESTINATION	INDICATION
SY 707 IR	TERMINAL ROAD (S)	T

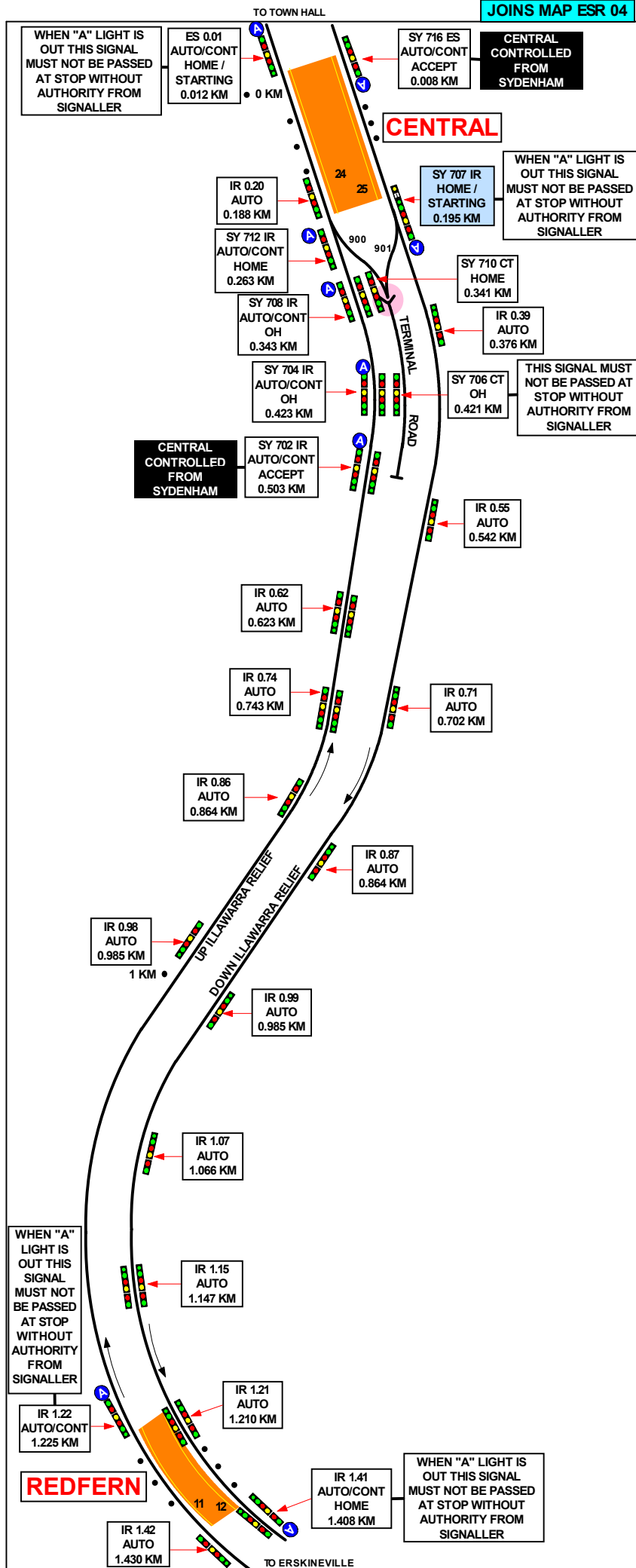
GRADIENT

LEVEL

1 IN 32

1 IN 33

LEVEL



SECTION : **CENTRAL TO REDFERN**  
MAP SET : **BONDI JUNCTION TO ERSKINEVILLE**  
UPDATED TO : 14 March 2024

## INFORMATION

CONTROLLED FROM : RAIL OPERATIONS CENTRE

RADIO AREA CODE : 007 (SYDENHAM)

**SPECIAL POINTS OF INTEREST****CENTRAL**

WHEN STABLING A TRAIN IN THE TERMINAL ROAD ALL MOTOR CAR HAND/PARKING BRAKES MUST BE APPLIED. SHOULD 4 CARS BE STANDING IN THE TERMINAL ROAD CLEAR OF SIGNAL SY 706 CT, ADDITIONAL 4 CARS MAY PROCEED ON CLEARING OF THE CALLING ON SIGNAL ON SY 707 IR.

NLA 106  
SEE NLA 106 FOR SPECIAL INSTRUCTIONS

APPENDICES  
PLEASE SEE APPENDICES FOR POINTS OF NO RETURN, AND TERMINATING MOVEMENTS

SIGNAL	DESTINATION	INDICATION
SY 707 IR	TERMINAL ROAD (S)	T

GRADIENT

LEVEL

1 IN 169

1 IN 49

LEVEL

SECTION : **REDFERN TO ERSKINEVILLE**  
MAP SET : **BONDI JUNCTION TO ERSKINEVILLE**  
UPDATED TO : 13 January 2026

GRADIENT

## INFORMATION

CONTROLLED FROM : **RAIL OPERATIONS CENTRE**RADIO AREA CODE : **007** (SYDENHAM)  
: **035** (EAST DOWN)**SPECIAL POINTS OF INTEREST**  
**ERSKINEVILLE**SETTING BACK IS NOT PERMITTED AT ERSKINEVILLE  
DOWN ILLAWARRA LOCAL No. 2 PLATFORM.**NLA 106**  
**SEE NLA 106 FOR SPECIAL INSTRUCTIONS****APPENDICES**  
**PLEASE SEE APPENDICES FOR POINTS OF NO RETURN,**  
**AND TERMINATING MOVEMENTS**

SIGNAL	DESTINATION	IND.
542	-	-
	EVELEIGH YARD	Y

SIGNAL	DESTINATION	IND.
SY 544 I	UP ILLAWARRA (M)	-
	-	-
	UP ILLAWARRA RELIEF (M)	-
	UP ILLAWARRA (S)	UI
	EVELEIGH YARD (S)	Y
SY 545 IR	DOWN ILLAWARRA (M)	-
	DOWN ILLAWARRA (S)	-

SIGNAL	DESTINATION	IND.
541	DOWN ILLAWARRA (M)	-
	UP ILLAWARRA (S)	-

