

# DRIVERS ROUTE KNOWLEDGE DIAGRAMS

## CRONULLA LINE

SUTHERLAND

KIRRAWEE

GYMEA

MIRANDA

CARINGBAH

WOOLOOWARE

CRONULLA

**Effective Date:** June 2026

**Version:** 4.23

### **Explanatory Notes:**

Navigate to your area of interest via the station index or by using links created in Adobe bookmarks.

This document is approved for **route knowledge only**.

**Do not use these diagrams for any safety related purpose** without validating the information against a controlled source or in the field.

Information in these diagrams is uncontrolled.

Please report any updates to  
[gis.support@transport.nsw.gov.au](mailto:gis.support@transport.nsw.gov.au)



**Copyright:** Sydney Trains

**Ownership:** Location Services

**Location:** CM Record No.D2015/582

SECTION : **SUTHERLAND TO KIRRAWEE**  
 MAP SET : **SUTHERLAND TO CRONULLA**  
 UPDATED TO : 8 April 2024

GRADIENT

**INFORMATION**

CONTROLLED FROM : RAIL OPERATIONS CENTRE

RADIO AREA CODE : 008 (SUTHERLAND)

**SPECIAL POINTS OF INTEREST  
 SUTHERLAND**

APPENDICES  
 PLEASE SEE APPENDICES FOR POINTS  
 OF NO RETURN, TERMINATING MOVEMENTS  
 AND SIDING LENGTHS

LEVEL

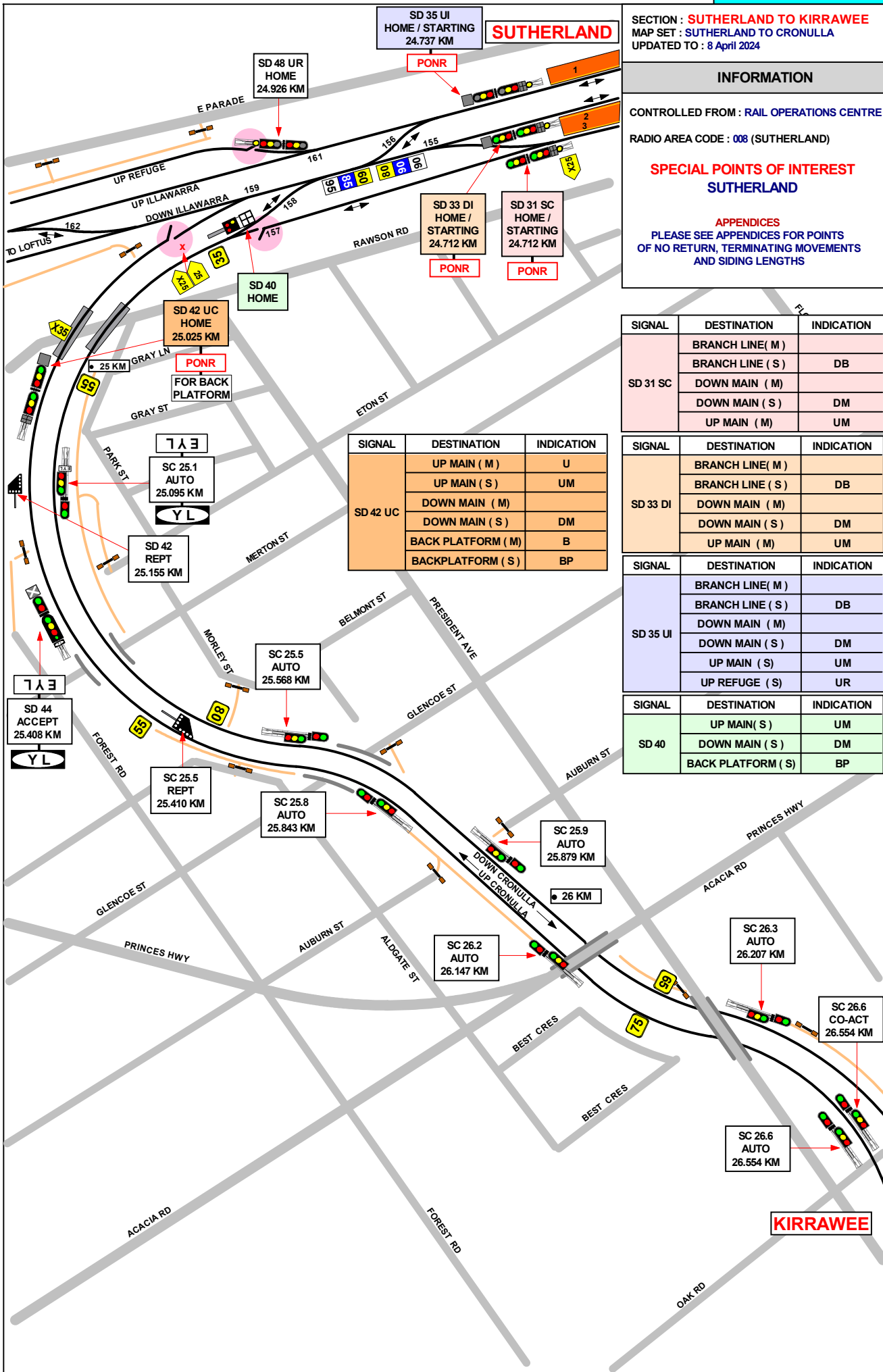
1 IN 40

1 IN 132

1 IN 200

1 IN 200

1 IN 82



SIGNAL	DESTINATION	INDICATION
SD 42 UC	UP MAIN ( M )	U
	UP MAIN ( S )	UM
	DOWN MAIN ( M )	
	DOWN MAIN ( S )	DM
	BACK PLATFORM ( M )	B
	BACKPLATFORM ( S )	BP

SIGNAL	DESTINATION	INDICATION
SD 31 SC	BRANCH LINE( M )	
	BRANCH LINE ( S )	DB
	DOWN MAIN ( M )	
	DOWN MAIN ( S )	DM
	UP MAIN ( M )	UM

SIGNAL	DESTINATION	INDICATION
SD 33 DI	BRANCH LINE( M )	
	BRANCH LINE ( S )	DB
	DOWN MAIN ( M )	
	DOWN MAIN ( S )	DM
	UP MAIN ( M )	UM

SIGNAL	DESTINATION	INDICATION
SD 35 UI	BRANCH LINE( M )	
	BRANCH LINE ( S )	DB
	DOWN MAIN ( M )	
	DOWN MAIN ( S )	DM
	UP MAIN ( S )	UM
	UP REFUGE ( S )	UR

SIGNAL	DESTINATION	INDICATION
SD 40	UP MAIN( S )	UM
	DOWN MAIN ( S )	DM
	BACK PLATFORM ( S )	BP

SECTION : **KIRRAWEE TO MIRANDA**  
MAP SET : SUTHERLAND TO CRONULLA  
UPDATED TO : 8 April 2024

GRADIENT

**INFORMATION**

CONTROLLED FROM : RAIL OPERATIONS CENTRE

RADIO AREA CODE : 008 (SUTHERLAND)

1 IN 82

1 IN 40

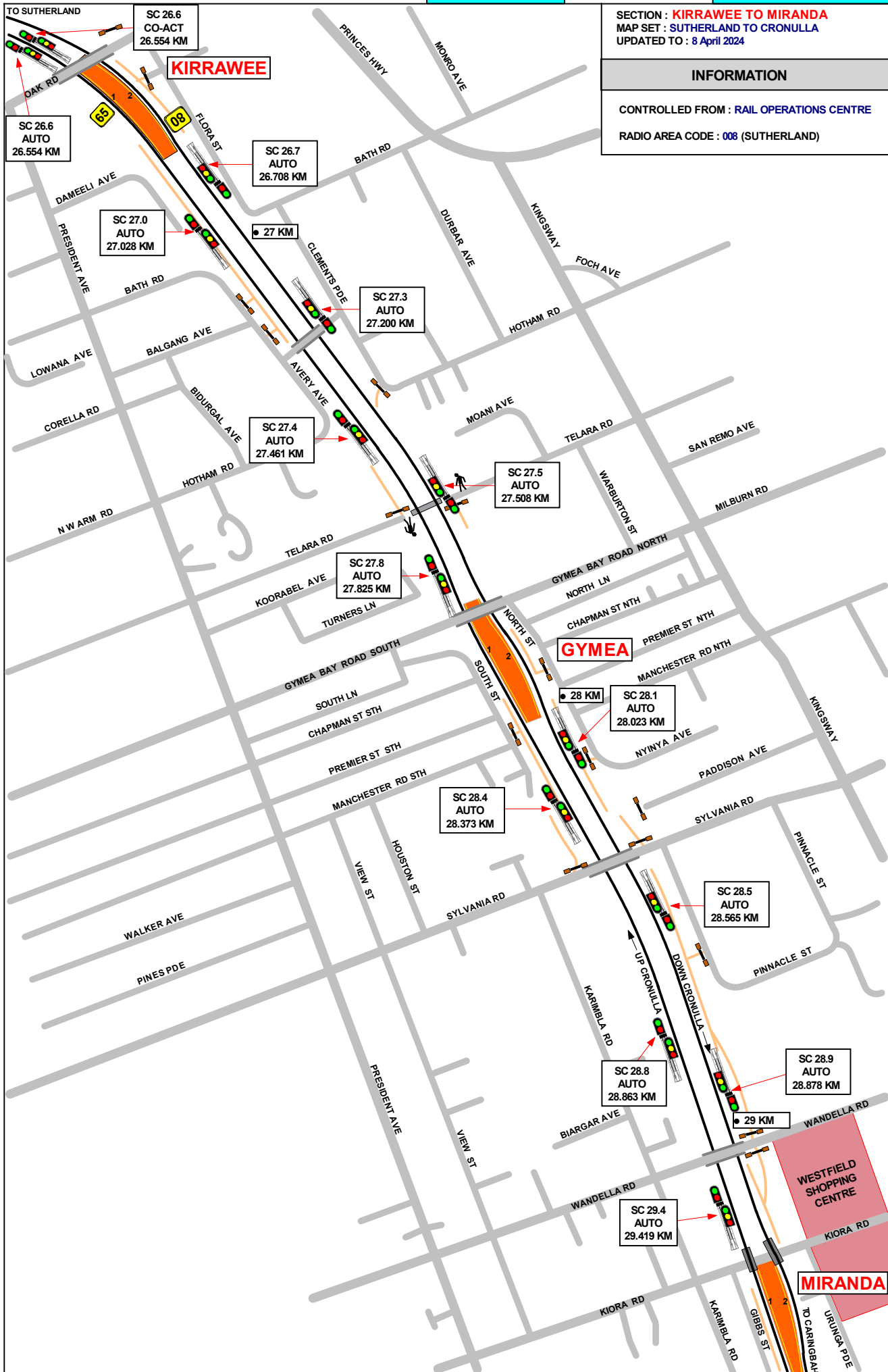
1 IN 60

1 IN 40

1 IN 550

1 IN 51

1 IN 400



SECTION : MIRANDA TO CARINGBAH  
MAP SET : SUTHERLAND TO CRONULLA  
UPDATED TO : 8 April 2024

INFORMATION

CONTROLLED FROM : RAIL OPERATIONS CENTRE  
RADIO AREA CODE : 008 (SUTHERLAND)

GRADIENT

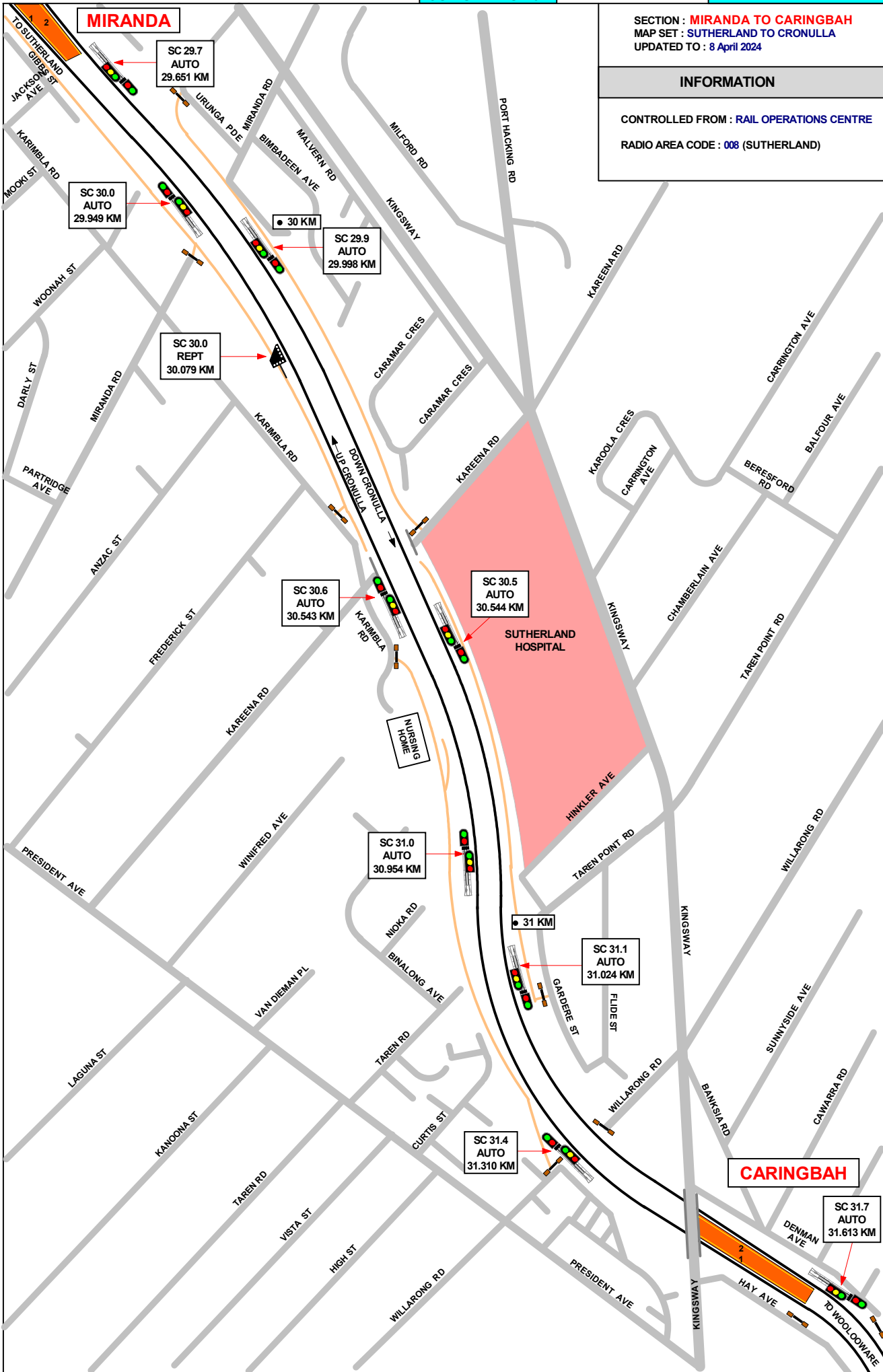
1 IN 400

1 IN 40

1 IN 63

1 IN 77

1 IN 165

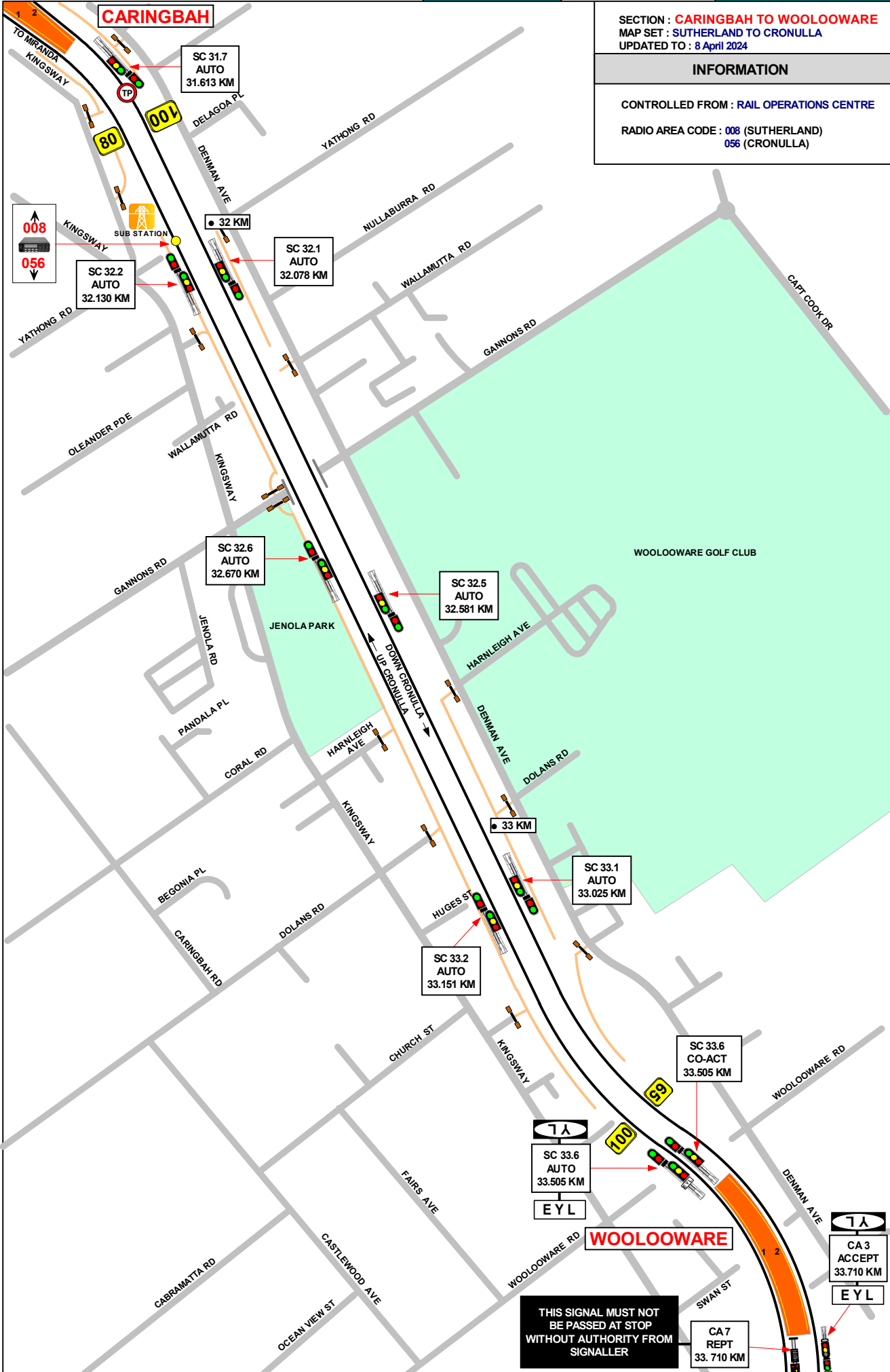


SECTION : **CARINGBAH TO WOOLLOOWARE**  
MAP SET : **SUTHERLAND TO CRONULLA**  
UPDATED TO : **8 April 2024**

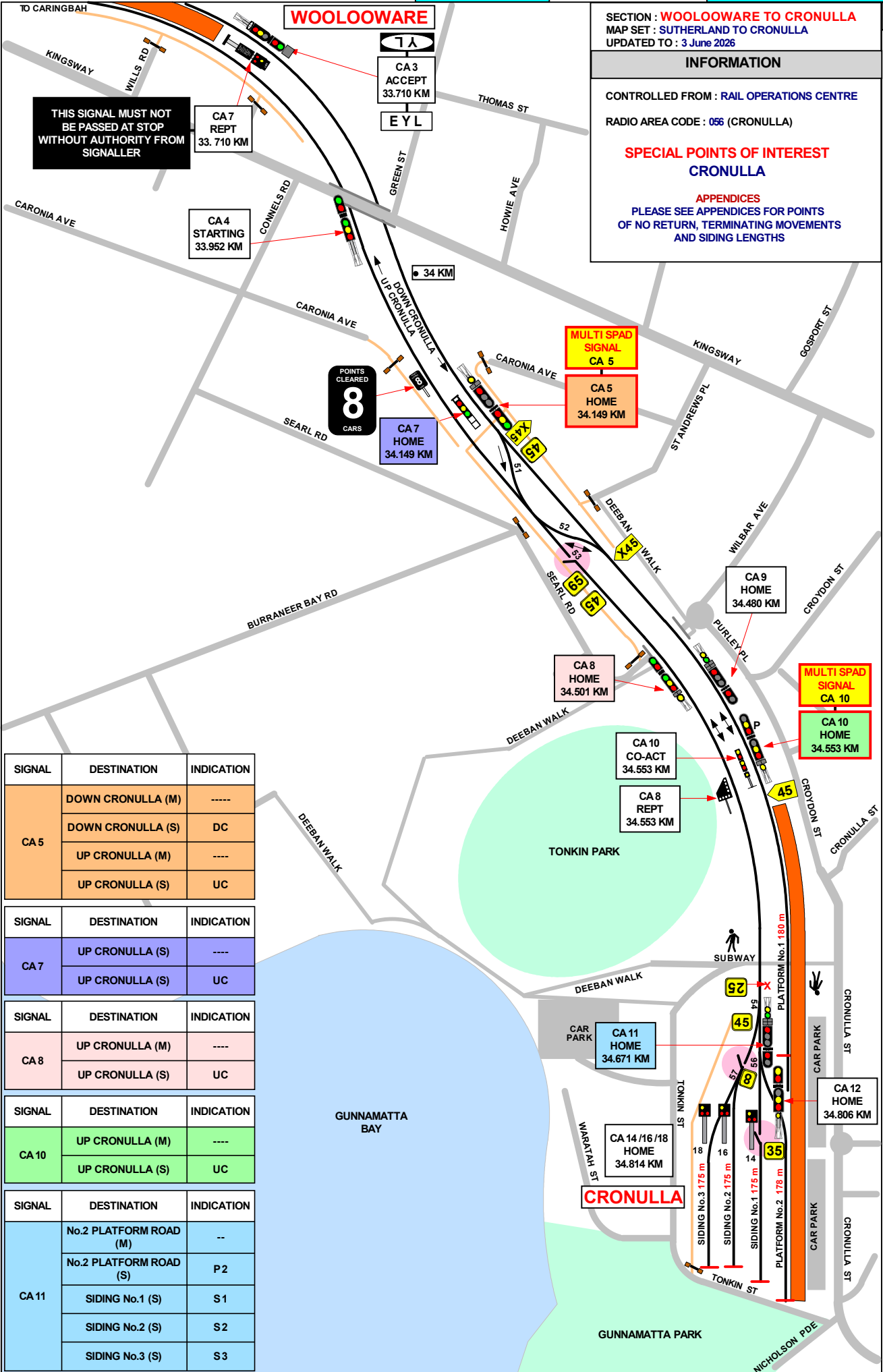
**INFORMATION**

CONTROLLED FROM : **RAIL OPERATIONS CENTRE**  
RADIO AREA CODE : **008 (SUTHERLAND)**  
**056 (CRONULLA)**

GRADIENT
1 IN 165
1 IN 42
1 IN 76
1 IN 97
1 IN 41
1 IN 114



**THIS SIGNAL MUST NOT BE PASSED AT STOP WITHOUT AUTHORITY FROM SIGNALLER**



SECTION : WOOLLOOWARE TO CRONULLA  
 MAP SET : SUTHERLAND TO CRONULLA  
 UPDATED TO : 3 June 2026

**INFORMATION**

CONTROLLED FROM : RAIL OPERATIONS CENTRE  
 RADIO AREA CODE : 056 (CRONULLA)

**SPECIAL POINTS OF INTEREST  
 CRONULLA**

**APPENDICES**  
 PLEASE SEE APPENDICES FOR POINTS  
 OF NO RETURN, TERMINATING MOVEMENTS  
 AND SIDING LENGTHS



SIGNAL	DESTINATION	INDICATION
CA 5	DOWN CRONULLA (M)	----
	DOWN CRONULLA (S)	DC
	UP CRONULLA (M)	----
	UP CRONULLA (S)	UC

SIGNAL	DESTINATION	INDICATION
CA 7	UP CRONULLA (S)	----
	UP CRONULLA (S)	UC

SIGNAL	DESTINATION	INDICATION
CA 8	UP CRONULLA (M)	----
	UP CRONULLA (S)	UC

SIGNAL	DESTINATION	INDICATION
CA 10	UP CRONULLA (M)	----
	UP CRONULLA (S)	UC

SIGNAL	DESTINATION	INDICATION
CA 11	No.2 PLATFORM ROAD (M)	--
	No.2 PLATFORM ROAD (S)	P2
	SIDING No.1 (S)	S1
	SIDING No.2 (S)	S2
	SIDING No.3 (S)	S3