

DRIVERS ROUTE KNOWLEDGE DIAGRAMS

AIRPORT LINE

CENTRAL

GREEN SQUARE

MASCOT

DOMESTIC AIRPORT

INTERNATIONAL AIRPORT

WOLLI CREEK

TURRELLA

Effective Date: December 2025

Version: 4.32

Explanatory Notes:

Navigate to your area of interest via the station index or by using links created in Adobe bookmarks.

This document is approved for **route knowledge only**.

Do not use these diagrams for any safety related purpose without validating the information against a controlled source or in the field.

Information in these diagrams is uncontrolled.

Please report any updates to
gis.support@transport.nsw.gov.au



Copyright: Sydney Trains

Ownership: Location Services

Location: CM Record No.D2015/571



GRADIENT

LEVEL

1 IN 75

1 IN 40

CENTRAL TURNBACK ARRANGEMENTS

DOWN CITY OUTER AND DOWN SHORE TRAINS MAY PROCEED FORWARD AND RETURN TO CENTRAL VIA No. 617, No. 618 or No. 619 CROSSOVER, PROVIDED THAT NO PORTION OF THE TRAIN HAS PASSED THE RESPECTIVE CAR MARKER RELATING TO THE TRAIN.

- WHEN THIS WORKING IS TO BE ARRANGED, THE SIGNALLER AT SYDNEY SHALL:
- IF THE TRAIN IS NOT TIMETABLED TO PERFORM THIS MOVEMENT, ARRANGE FOR THE CREW OF THE TRAIN TO BE ADVISED OF THE WORKING TO BE ADOPTED
- THEN SET THE ROUTE FOR THE TRAIN TO PROCEED CLEAR OF SIGNAL No. SY 364 or No. SY 366
- WHEN THE TRAIN IS CLEAR OF SIGNAL No. SY 364 or No. SY 366, SET THE ROUTE FOR THE TRAIN TO RETURN TO CENTRAL.

DOWN CITY INNER TRAINS MAY PROCEED FORWARD AND RETURN TO CENTRAL VIA No. 621 CROSSOVER, PROVIDED THAT NO PORTION OF THE TRAIN HAS PASSED THE RESPECTIVE CAR MARKER RELATING TO THE TRAIN.

- WHEN THIS WORKING IS TO BE ARRANGED, THE SIGNALLER AT SYDNEY SHALL:
- IF THE TRAIN IS NOT TIMETABLED TO PERFORM THIS MOVEMENT, ARRANGE FOR THE CREW OF THE TRAIN TO BE ADVISED OF THE WORKING TO BE ADOPTED
- THEN SET THE ROUTE FOR THE TRAIN TO PROCEED CLEAR OF SIGNAL No. SY 359
- WHEN THE TRAIN IS CLEAR OF SIGNAL No. SY 359, SET THE ROUTE FOR THE TRAIN TO RETURN TO CENTRAL.

CENTRAL TIMING MARKER SIGNS

FOUR TIMING MARKER SIGNS, EACH WITH A YELLOW REFLECTIVE LETTER ' T ' DISPLAYED ON A BLACK BACKGROUND, ARE PROVIDED IN THE CENTRAL FLYOVER AREA WHERE THE TIMING SECTIONS ARE UNUSUALLY SHORT.

THEY ARE LOCATED AS FOLLOWS:

LINE	MARKER LOCATION
DOWN LOCAL	23 METRES IN APPROACH TO SIGNAL No. SY 397 L
UP LOCAL	16 METRES IN APPROACH TO SIGNAL No. SY 394 L
UP ILLAWARRA LOCAL	36 METRES IN APPROACH TO SIGNAL No. SY 388 IL, AND 16 METRES IN APPROACH TO SIGNAL No. SY 396 IL

A TRAIN APPROACHING ANY OF THESE SIGNALS AND SHOWING A LOW SPEED OR MEDIUM CAUTION INDICATION SHALL BE DRAWN PAST THE ' T ' MARKER SIGN, OTHERWISE THE TIMING WILL NOT COMMENCE AND THE TRAIN STOP WILL NOT CLEAR.

WRONG DIRECTION TRAIN MOVEMENTS IN THE SYDNEY UNDERGROUND

WHEN TRAINS ARE DELAYED IN THE UNDERGROUND AND CANNOT BE WORKED IN THE RIGHT RUNNING DIRECTION, THE YARD WORKING IN THIS UNIT MAY BE AUTHORISED BY THE TRAIN CONTROLLER TO ALLOW TRAINS TO BE MOVED OUT OF THE TUNNELS

LIMITS OF THE SYDNEY UNDERGROUND AREA

LINE TITLE	FROM	TO
CITY CIRCLE - INNER ROAD	No. 624 POINTS AT CENTRAL	No. 616 POINTS AT CENTRAL
CITY CIRCLE - OUTER ROAD	No. 622 POINTS AT CENTRAL	No. 625 POINTS AT CENTRAL
DOWN NORTH SHORE LINE	No. 622 POINTS AT CENTRAL	No. 612 POINTS AT WYNARD
UP NORTH SHORE LINE	No. 612 POINTS AT WYNARD	No. 623 POINTS AT CENTRAL

ALL TRAIN MOVEMENTS WILL BE CONTROLLED BY THE SIGNALLER AT SYDNEY SIGNAL BOX WHO SHALL LIAISE WITH THE TRAIN CONTROLLER TO CO-ORDINATE THE MOVEMENTS

THE DRIVER SHALL ALWAYS CHANGE ENDS AND DRIVE FROM THE LEADING DRIVERS COMPARTMENT IN THE DIRECTION OF TRAVEL. BEFORE CHANGING ENDS, THE DRIVER SHALL CHANGE THE MARKER LIGHTS TO RED. WHERE PROVIDED AND WHERE POSSIBLE, THE DRIVER SHALL ALSO LATCH UP THE TRIP. AFTER CHANGING ENDS, THE DRIVER SHALL CHANGE THE TAIL LIGHTS TO SHOW WHITE MARKER LIGHTS IN THE DIRECTION OF TRAVEL BEFORE MOVING THE TRAIN

IF FOR SOME REASON IT IS NOT POSSIBLE FOR THE DRIVER TO CHANGE ENDS AND DRIVE FROM THE LEADING COMPARTMENT IN THE DIRECTION OF TRAVEL, ANOTHER TRAIN SHALL BE BROUGHT ONTO THE TRAIN, THE TRAINS AMALGAMATED, AND THEN DRIVEN AS ONE TRAIN FROM THE LEADING CAB IN THE DIRECTION OF TRAVEL

THE DRIVER SHALL BE INSTRUCTED TO PROCEED TO THE FIRST PLATFORM IN THE WRONG RUNNING DIRECTION ONLY WHEN THE LINE IS UNOCCUPIED TO THE FIRST PLATFORM AND THE PLATFORM IS UNOCCUPIED. WHEN THERE IS NO ALTERNATIVE, TRAINS MAY BE BROUGHT BACK TO A PLATFORM THAT IS OCCUPIED AND THEN AMALGAMATED TO ALLOW PASSENGERS TO WALK THROUGH AND ALIGHT AT THE PLATFORM

WHEN IT IS NECESSARY FOR A TRAIN TO PROCEED BEYOND THE FIRST PLATFORM IN THE WRONG DIRECTION, THE SAME PROCESS FOR MOVING THE TRAIN SHALL BE REPEATED BETWEEN THE SIGNALLER AND THE DRIVER. THE LINE SHALL BE UNOCCUPIED TO THE NEXT PLATFORM AND THE TRAIN SHALL ONLY PROCEED WHEN AUTHORISED BY THE SIGNALLER

WHEN THE DRIVER IS REQUIRED TO CARRY OUT AN UNSIGNALLED MOVEMENT, THE DRIVER SHALL NOT ALLOW THE SPEED OF THE TRAIN TO EXCEED 10 KWH

IF A TRAIN CANNOT TRAVEL IN THE WRONG RUNNING DIRECTION OWING TO LOSS OF TRACTION, THE DRIVER SHALL INFORM THE SIGNALLER SO THAT ALTERNATIVE ARRANGEMENTS CAN BE MADE

SECTION : **GOULBURN STREET TO CENTRAL**
 MAP SET : **CENTRAL TO TURRELLA**
 PAGE : 2 OF 2
 UPDATED TO : 8 April 2024

INFORMATION

CONTROLLED FROM : **RAIL OPERATIONS CENTRE**

RADIO AREA CODE : **002** (SYDNEY EAST UP)
003 (SYDNEY EAST DN)

APPENDICES

**PLEASE SEE APPENDICES FOR POINTS OF NO RETURN,
TERMINATING MOVEMENTS AND SIDING LENGTHS**

SECTION : **CENTRAL TO AIRPORT PORTAL**
CENTRAL TO REDFERN

MAP SET : **CENTRAL TO TURRELLA**

PAGE : 1 OF 4

UPDATED TO : 8 April 2024

APPENDICES

PLEASE SEE APPENDICES FOR POINTS OF NO RETURN,
 TERMINATING MOVEMENTS AND SIDING LENGTHS

CENTRAL

PONR

SY 387 SR
HOME

0.180 KM

PONR

SY 385 IL
HOME

0.181 KM

PONR

DRIVERS OF
LOCOMOTIVE - HAULED
SERVICES AND NON - ELECTRIC
POWERED VEHICLES
PROCEEDING TO THE AIRPORT
LINE SHALL NOT PASS THIS
POINT UNTIL AUTHORISED BY
THE SIGNALLER

PONR

SY 391 IL
HOME

0.340 KM

PONR

SY 352 SR
HOME

0.438 KM

PONR

SY 393 SR
OH

0.434 KM

PONR

SY 801 SR
HOME /
STARTING

0.625 KM

PONR

SY 399 IL
HOME

0.490 KM

PONR

SY 422 SR
OH

0.660 KM

PONR

SY 413 IL
OH

0.840 KM

PONR

SY 433 IL
OH

0.912 KM

PONR

SY 443 IL
OH

1.090 KM

PONR

SY 453 IL
OH

1.180 KM

PONR

SY 463 IL
OH

1.270 KM

PONR

SY 473 IL
OH

1.360 KM

PONR

SY 483 IL
OH

1.450 KM

PONR

SY 493 IL
OH

1.540 KM

PONR

SY 503 IL
OH

1.630 KM

PONR

SY 513 IL
OH

1.720 KM

PONR

SY 523 IL
OH

1.810 KM

PONR

SY 533 IL
OH

1.900 KM

PONR

SY 543 IL
OH

1.990 KM

PONR

SY 553 IL
OH

2.080 KM

PONR

SY 563 IL
OH

2.170 KM

PONR

SY 573 IL
OH

2.260 KM

PONR

SY 583 IL
OH

2.350 KM

PONR

SY 593 IL
OH

2.440 KM

PONR

SY 603 IL
OH

2.530 KM

PONR

SY 613 IL
OH

2.620 KM

PONR

SY 623 IL
OH

2.710 KM

PONR

SY 633 IL
OH

2.800 KM

PONR

SY 643 IL
OH

2.890 KM

PONR

SY 653 IL
OH

2.980 KM

PONR

SY 663 IL
OH

3.070 KM

PONR

SY 673 IL
OH

3.160 KM

PONR

SY 683 IL
OH

3.250 KM

PONR

SY 693 IL
OH

3.340 KM

PONR

SY 703 IL
OH

3.430 KM

PONR

SY 713 IL
OH

3.520 KM

PONR

SY 723 IL
OH

3.610 KM

PONR

SY 733 IL
OH

3.700 KM

PONR

SY 743 IL
OH

3.790 KM

PONR

SY 753 IL
OH

3.880 KM

PONR

SY 763 IL
OH

3.970 KM

PONR

SY 773 IL
OH

4.060 KM

PONR

SY 783 IL
OH

4.150 KM

PONR

SY 793 IL
OH

4.240 KM

PONR

SY 803 IL
OH

4.330 KM

PONR

SY 813 IL
OH

4.420 KM

PONR

SY 823 IL
OH

4.510 KM

PONR

SY 833 IL
OH

4.600 KM

PONR

SY 843 IL
OH

4.690 KM

PONR

SY 853 IL
OH

4.780 KM

PONR

SY 863 IL
OH

4.870 KM

PONR

SY 873 IL
OH

4.960 KM

PONR

SY 883 IL
OH

5.050 KM

PONR

SY 893 IL
OH

5.140 KM

PONR

SY 903 IL
OH

5.230 KM

PONR

SY 913 IL
OH

5.320 KM

PONR

SY 923 IL
OH

5.410 KM

PONR

SY 933 IL
OH

5.500 KM

PONR

SY 943 IL
OH

5.590 KM

PONR

SY 953 IL
OH

5.680 KM

PONR

SY 963 IL
OH

5.770 KM

PONR

SY 973 IL
OH

5.860 KM

PONR

SY 983 IL
OH

5.950 KM

PONR

SY 993 IL
OH

6.040 KM

PONR

SY 1003 IL
OH

6.130 KM

PONR

SY 1013 IL
OH

6.220 KM

PONR

SY 1023 IL
OH

6.310 KM

PONR

SY 1033 IL
OH

6.400 KM

PONR

SY 1043 IL
OH

6.490 KM

PONR

SY 1053 IL
OH

6.580 KM

PONR

SY 1063 IL
OH

6.670 KM

PONR

SY 1073 IL
OH

6.760 KM

PONR

SY 1083 IL
OH

6.850 KM

PONR

SY 1093 IL
OH

6.940 KM

PONR

SY 1103 IL
OH

7.030 KM

PONR

SY 1113 IL
OH

7.120 KM

PONR

SY 1123 IL
OH

7.210 KM

PONR

SY 1133 IL
OH

7.300 KM

PONR

SY 1143 IL
OH

7.390 KM

PONR

SY 1153 IL
OH

7.480 KM

PONR

SY 1163 IL
OH

7.570 KM

PONR

SY 1173 IL
OH

7.660 KM

PONR

SY 1183 IL
OH

7.750 KM

PONR

SY 1193 IL
OH

7.840 KM

PONR

SIGNAL	DESTINATION	INDICATION
SY 115	UP GOODS	G
	UP MAIN	M
	REGENTS STREET	R

SIGNAL	DESTINATION	INDICATION
SY 117	UP MAIN (S)	UM

SIGNAL	DESTINATION	INDICATION
SY 121	DOWN MAIN (S)	DM
	DOWN SUBURBAN (S)	DS

SIGNAL	DESTINATION	INDICATION
SY 124	DOWN MAIN (S)	DM
	DOWN SUBURBAN (S)	DS

SIGNAL	DESTINATION	INDICATION
SY 127	UP MAIN (M)	-
	UP MAIN (S)	UM
	ENGINE DIVE (M)	-
	ENGINE DIVE (S)	ED

SIGNAL	DESTINATION	INDICATION
SY 391 IL	DOWN NSR AIRPORT	A
	DOWN ILLAWARRA LOCAL	-
	DOWN LOCAL	L

SIGNAL	DESTINATION	INDICATION
SY 428	DOWN MAIN	DM
	DOWN SUBURBAN (S)	DS

SIGNAL	DESTINATION	INDICATION
SY 436 L	UP MAIN	M
	UP SUBURBAN	Y

SECTION : **CENTRAL TO AIRPORT PORTAL**
CENTRAL TO REDFERN
MAP SET : **CENTRAL TO TURRELLA**
PAGE : 2 OF 4
UPDATED TO : 8 April 2024

INFORMATION

CONTROLLED FROM : **RAIL OPERATIONS CENTRE**

RADIO AREA CODE : **002** (SYDNEY EAST UP)
003 (SYDNEY EAST DOWN)
035 (SYDNEY ILLAWARRA JN)

TWO WAY RUNNING BETWEEN ALL PLATFORMS
IN SYDNEY YARD AND EVELIEGH YARD VIA
ENGINE DIVE

APPENDICES

PLEASE SEE APPENDICES FOR POINTS OF NO RETURN,
TERMINATING MOVEMENTS AND SIDING LENGTHS



SIGNAL SY 389 L



SIGNAL SY 407 S



SIGNAL SY 436 L

SY 380 S OH 0.185 KM	SY 392 S OH 0.381 KM	SY 384 S HOME 0.260 KM	SY 382 L OH 0.184 KM	SY R384 REPEATER 0.261 KM	SY 386 L HOME 0.300 KML	SY 381 S HOME 0.182 KM	SY 383 L HOME 0.182 KM	SY 383 IND INDICATOR 0.182 KM	SY 389 L HOME 0.325 KM	SY 388 IL HOME 0.281 KM	SY 390 I HOME 0.280 KM	SY 385 IL HOME 0.181 KM	SY 387 I HOME 0.180 KM	SY 391 IL HOME 0.270 KM
----------------------------	----------------------------	------------------------------	----------------------------	---------------------------------	-------------------------------	------------------------------	------------------------------	-------------------------------------	------------------------------	-------------------------------	------------------------------	-------------------------------	------------------------------	-------------------------------

SY 395 S OH 0.381 KM	SY 394 L HOME 0.470 KM	SY 397 L HOME 0.491 KM	SY 396 IL HOME 0.480 KM	SY 398 NS HOME 0.425 KM	SY 399 IL HOME 0.490 KM	SR 0.7 AUTO/CONT STARTING 0.625 KM	SR 0.7 IND INDICATOR 0.625 KM
----------------------------	------------------------------	------------------------------	-------------------------------	-------------------------------	-------------------------------	---	-------------------------------------

SY 400 S HOME 0.612 KM	SY R407 REPEATER 0.661 KM	SY R403 REPEATER 0.542 KM	SY 403 S HOME 0.541 KM	SY 402 L HOME 0.660 KM	SY R409 REPEATER 0.763 KM	SY 404 IL HOME 0.650 KM	SY R411 REPEATER 0.762 KM	SY 406 I HOME 0.611 KM	SY 422 NS ACCEPT 0.660 KM
------------------------------	---------------------------------	---------------------------------	------------------------------	------------------------------	---------------------------------	-------------------------------	---------------------------------	------------------------------	---------------------------------

SY 115 SHUNT 0.742 KM	SY 117 SHUNT 0.740 KM	SY 116 SHUNT 0.741 KM	SY 122 HOME 0.840 KM	SY 123 HOME 0.832 KM	SY 121 SHUNT 0.831 KM	SY 120 HOME 0.830 KM	SY 410 S OH 0.814 KM	SY 407 S HOME 0.764 KM	SY 412 L OH 0.813 KM	SY 409 L HOME 0.763 KM	SY 414 IL OH 0.812 KM	SY 411 IL AUTO 0.762 KM	SY 416 I OH 0.811 KM	SY 413 I OH 0.840 KM
-----------------------------	-----------------------------	-----------------------------	----------------------------	----------------------------	-----------------------------	----------------------------	----------------------------	------------------------------	----------------------------	------------------------------	-----------------------------	-------------------------------	----------------------------	----------------------------

SY 127 HOME 0.990 KM	SY 126 M HOME 1.004 KM	R126 1.066 KM	SY 124 SHUNT 1.001 KM	SY 435 M HOME 0.997 KM	SY 434 S HOME 1.001 KM	SY 428 SHUNT 1.004 KM	SY 437 S HOME 1.001 KM	SY 436 L HOME 1.040 KM	SY 439 L HOME 1.014 KM	SY 438 IL AUTO 1.042 KM	SY 441 IL AUTO 1.010 KM	SY 430 I OH 1.043 KM	SY 433 I OH 0.912 KM
----------------------------	------------------------------	------------------	-----------------------------	------------------------------	------------------------------	-----------------------------	------------------------------	------------------------------	------------------------------	-------------------------------	-------------------------------	----------------------------	----------------------------

SY 130 ED HOME 1.164 KM	SY 131 M HOME 1.214 KM	SY R131 REPEATER 1.215 KM	SY 445 M HOME 1.184 KM	SY 440 S HOME 1.213 KM	SY 447 S OH 1.183 KM	SY 442 L HOME 1.212 KM	SY 449 L OH 1.182 KM	SY 444 IL AUTO 1.211 KM	SY 451 IL OH 1.181 KM	SY 446 I OH 1.210 KM	SY 443 I OH 1.091 KM	SY 453 I OH 1.180 KM
-------------------------------	------------------------------	---------------------------------	------------------------------	------------------------------	----------------------------	------------------------------	----------------------------	-------------------------------	-----------------------------	----------------------------	----------------------------	----------------------------

SECTION : **CENTRAL TO AIRPORT PORTAL**
CENTRAL TO REDFERN
MAP SET : **CENTRAL TO TURRELLA**
PAGE : 3 OF 4
UPDATED TO : 8 April 2024

INFORMATION

CONTROLLED FROM : **RAIL OPERATIONS CENTRE**

RADIO AREA CODE : **002** (SYDNEY EAST UP)
003 (SYDNEY EAST DN)
035 (SYDNEY ILLAWARRA JN)

APPENDICES
PLEASE SEE APPENDICES FOR POINTS OF NO RETURN,
TERMINATING MOVEMENTS AND SIDING LENGTHS

CENTRAL
TIMING MARKER SIGNS

FOUR TIMING MARKER SIGNS, EACH WITH A YELLOW REFLECTIVE LETTER ' T ' DISPLAYED ON A BLACK BACKGROUND, ARE PROVIDED IN THE CENTRAL FLYOVER AREA WHERE THE TIMING SECTIONS ARE UNUSUALLY SHORT.

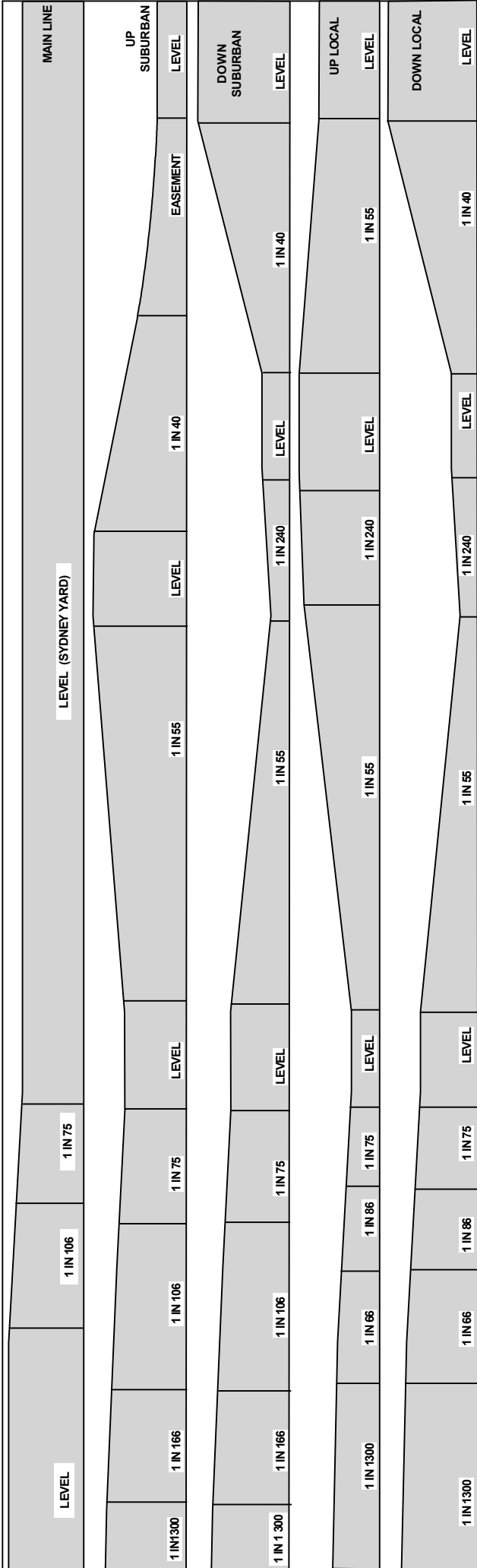
THEY ARE LOCATED AS FOLLOWS:

LINE	MARKER LOCATION
DOWN LOCAL	23 METRES IN APPROACH TO SIGNAL No. SY 397 L
UP LOCAL	16 METRES IN APPROACH TO SIGNAL No. SY 394 L
UP ILLAWARRA LOCAL	36 METRES IN APPROACH TO SIGNAL No. SY 388 IL, AND 16 METRES IN APPROACH TO SIGNAL No. 396 IL

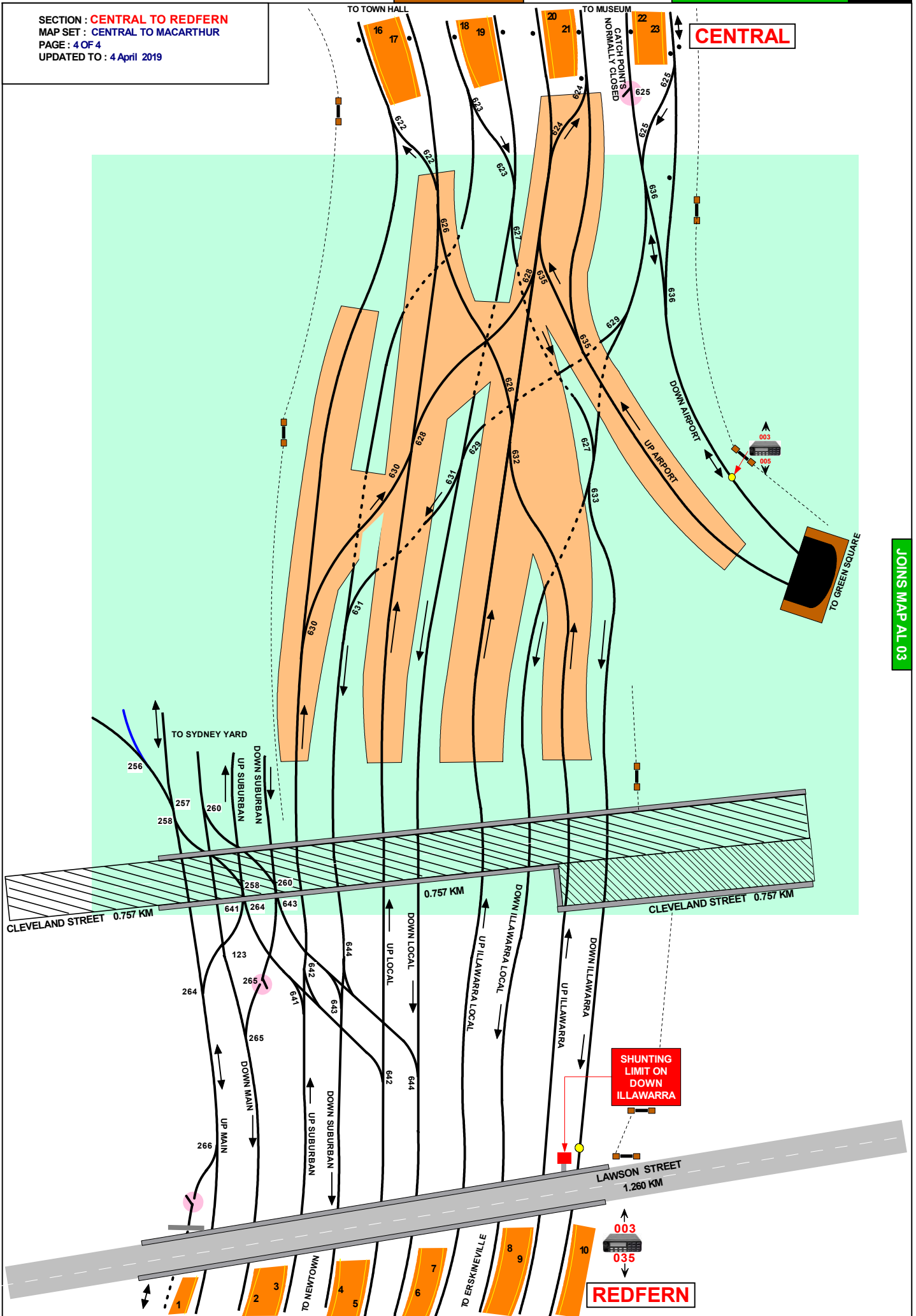
A TRAIN APPROACHING ANY OF THESE SIGNALS AND SHOWING A LOW SPEED OR MEDIUM CAUTION INDICATION SHALL BE DRAWN PAST THE ' T ' MARKER SIGN, OTHERWISE THE TIMING WILL NOT COMMENCE AND THE TRAIN STOP WILL NOT CLEAR.

PLATFORMS WHERE SETTING BACK IS NOT PERMITTED

REDFERN	LINE TITLE	PLATFORM
	UP SUBURBAN	3
	UP LOCAL	5
	UP ILLAWARRA LOCAL	7
	DOWN ILLAWARRA LOCAL	8
	UP ILLAWARRA	9



SECTION : **CENTRAL TO REDFERN**
 MAP SET : **CENTRAL TO MACARTHUR**
 PAGE : 4 OF 4
 UPDATED TO : 4 April 2019

CENTRAL**REDFERN**

THIS SIGNAL MUST NOT BE PASSED AT STOP WITHOUT AUTHORITY FROM SIGNALLER

SY 422 SR OH
0.660 KM

TO CENTRAL

SY 801SR INDICATOR
0.625 KM

SY 801SR HOME / STARTING
0.625 KM

SECTION : **CENTRAL TO GREEN SQUARE**
MAP SET : **CENTRAL TO TURRELLA**
UPDATED TO : 8 April 2024

GRADIENT

INFORMATION

CONTROLLED FROM : **RAIL OPERATIONS CENTRE**

RADIO AREA CODE : **002** (SYDNEY EAST UP)
005 (SYDENHAM)

SPECIAL POINTS OF INTEREST

GENERAL INSTRUCTIONS
AIRPORT LINE

FIRE TELEPHONES ARE INSTALLED IN THE AIRPORT LINE TUNNEL AT VARIOUS LOCATIONS ABOUT 120 METRES APART, AND ARE CONNECTED TO OPERATIONS CONTROL. THEY ARE PAINTED RED TO DISTINGUISH THEM FROM OTHER PHONES.
THESE TELEPHONES MUST ONLY BE USED IN THE CASE OF A FIRE OR AN EMERGENCY.

TROLLEYS FOR USE BY EMERGENCY SERVICES

PORTABLE TROLLEYS FOR USE DURING AN EMERGENCY SITUATION ARE PROVIDED AT ALL STATIONS ON THE AIRPORT LINE.

THE TROLLEYS ARE LOCATED UNDERNEATH THE PLATFORM COPING AT THE STATIONS.
THE NUMBER OF TROLLEYS PROVIDED IS AS FOLLOWS:

GREEN SQUARE, MASCOT, DOMESTIC, INTERNATIONAL
4 TROLLEYS AT EACH STATION:
2 FOR THE DOWN PLATFORM AND 2 FOR THE UP PLATFORM.
WOLLI CREEK 2 TROLLEYS:
1 FOR THE DOWN PLATFORM AND 1 FOR THE UP PLATFORM.

WRONG RUNNING-DIRECTION AND UNSIGNALLED MOVEMENTS

IF WRONG RUNNING-DIRECTION OR UNSIGNALLED MOVEMENTS NEED TO BE MADE BETWEEN SYDNEY'S YARD LIMITS AND SYDENHAM'S YARD LIMITS, THE SIGNALLER AT SYDENHAM MUST TREAT THE SECTION AS A CONSOLIDATED YARD AND APPLY THE PROVISIONS OF NTR 418.
IN ADDITION:

- HEADLIGHTS MUST BE SWITCHED ON BETWEEN PLATFORMS, AND
- RAIL TRAFFIC MUST NOT EXCEED 10KM/H.

SIGNAL	DESTINATION	INDICATION
SY 818	UP AIRPORT	UA
	DOWN AIRPORT	DA

SY 818 SR HOME
1.150 KM

X75

• 1 KM

SY 1.3 AUTO
1.200 KM

YL

UP AIRPORT LINE
DOWN AIRPORT LINE

002
005

SY 820 R ACCEPT
1.750 KM

YL

THIS SIGNAL MUST NOT BE PASSED AT STOP WITHOUT AUTHORITY FROM SIGNALLER

SR 1.7 AUTO
1.700 KM

SR 2.0 AUTO
2.031 KM

80

SR 2.1 AUTO
2.060 KM

• 2 KM

SR 2.3 AUTO
2.298 KM

SR 2.4 CO-ACT
2.328 KM

SR 2.4 AUTO
2.330 KM

WHEN THE "A" LIGHT IS OUT, THIS SIGNAL MUST NOT BE PASSED AT STOP WITHOUT AUTHORITY FROM SIGNALLER

SR 2.6 AUTO/CONT
2.622 KM

SR 2.5 AUTO
2.500 KM

GREEN SQUARE

TO MASCOT

1 IN 38

1 IN 37

1 IN 33

1 IN 37

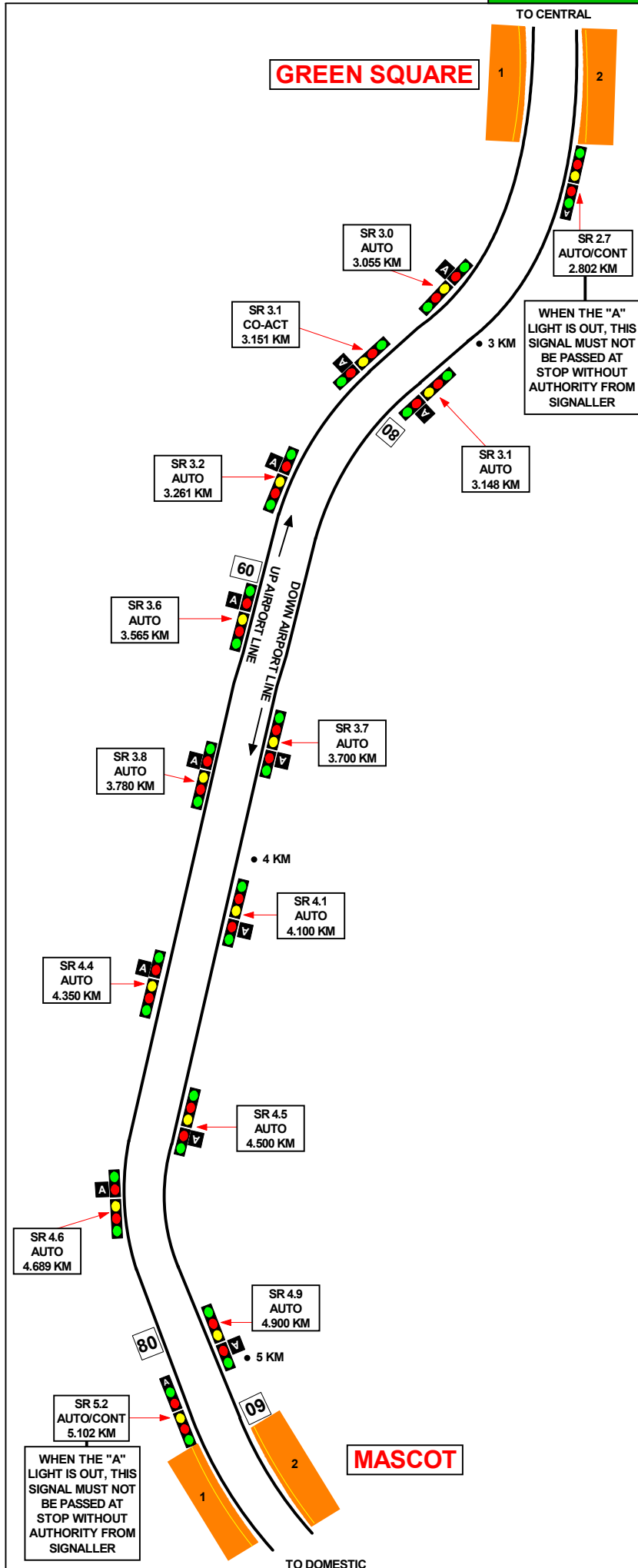
1 IN 397

1 IN 50

1 IN 78

1 IN 85

1 IN 401



SECTION : **GREEN SQUARE TO MASCOT**
 MAP SET : **CENTRAL TO TURRELLA**
 UPDATED TO : 8 April 2024

INFORMATION

CONTROLLED FROM : **RAIL OPERATIONS CENTRE**

RADIO AREA CODE : **005 (SYDENHAM)**

SPECIAL POINTS OF INTEREST GENERAL INSTRUCTIONS AIRPORT LINE

FIRE TELEPHONES ARE INSTALLED IN THE AIRPORT LINE TUNNEL AT VARIOUS LOCATIONS ABOUT 120 METRES APART, AND ARE CONNECTED TO OPERATIONS CONTROL. THEY ARE PAINTED RED TO DISTINGUISH THEM FROM OTHER PHONES. THESE TELEPHONES MUST ONLY BE USED IN THE CASE OF A FIRE OR AN EMERGENCY.

TROLLEYS FOR USE BY EMERGENCY SERVICES

PORTABLE TROLLEYS FOR USE DURING AN EMERGENCY SITUATION ARE PROVIDED AT ALL STATIONS ON THE AIRPORT LINE.

THE TROLLEYS ARE LOCATED UNDERNEATH THE PLATFORM COPING AT THE STATIONS.
 THE NUMBER OF TROLLEYS PROVIDED IS AS FOLLOWS:

GREEN SQUARE, MASCOT, DOMESTIC, INTERNATIONAL
 4 TROLLEYS AT EACH STATION:
 2 FOR THE DOWN PLATFORM AND 2 FOR THE UP PLATFORM.
 WOLLI CREEK 2 TROLLEYS:
 1 FOR THE DOWN PLATFORM AND 1 FOR THE UP PLATFORM.

WRONG RUNNING-DIRECTION AND UNSIGNALLED MOVEMENTS

IF WRONG RUNNING-DIRECTION OR UNSIGNALLED MOVEMENTS NEED TO BE MADE BETWEEN SYDNEY'S YARD LIMITS AND SYDENHAM'S YARD LIMITS, THE SIGNALLER AT SYDENHAM MUST TREAT THE SECTION AS A CONSOLIDATED YARD AND APPLY THE PROVISIONS OF NTR 418. IN ADDITION:

- HEADLIGHTS MUST BE SWITCHED ON BETWEEN PLATFORMS, AND
- RAIL TRAFFIC MUST NOT EXCEED 10KM/H.

GRADIENT

1 IN 401

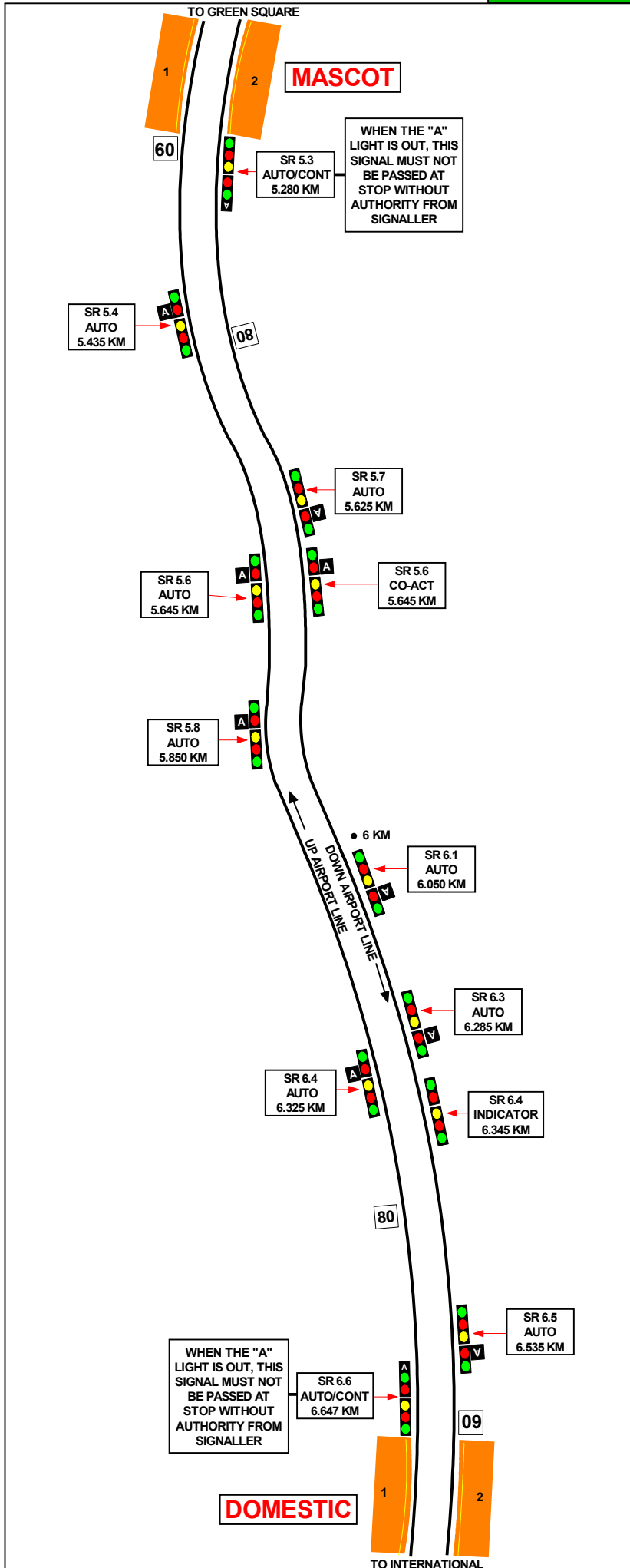
1 IN 42

1 IN 57

1 IN 217

1 IN 187

1 IN 400



SECTION : **MASCOT TO DOMESTIC**
 MAP SET : **CENTRAL TO TURRELLA**
 UPDATED TO : 8 April 2024

GRADIENT

INFORMATION

CONTROLLED FROM : **RAIL OPERATIONS CENTRE**

RADIO AREA CODE : **005 (SYDENHAM)**

SPECIAL POINTS OF INTEREST
GENERAL INSTRUCTIONS
AIRPORT LINE

FIRE TELEPHONES ARE INSTALLED IN THE AIRPORT LINE TUNNEL AT VARIOUS LOCATIONS ABOUT 120 METRES APART, AND ARE CONNECTED TO OPERATIONS CONTROL. THEY ARE PAINTED RED TO DISTINGUISH THEM FROM OTHER PHONES.
 THESE TELEPHONES MUST ONLY BE USED IN THE CASE OF A FIRE OR AN EMERGENCY.

TROLLEYS FOR USE BY EMERGENCY SERVICES

PORTABLE TROLLEYS FOR USE DURING AN EMERGENCY SITUATION ARE PROVIDED AT ALL STATIONS ON THE AIRPORT LINE.

THE TROLLEYS ARE LOCATED UNDERNEATH THE PLATFORM COPING AT THE STATIONS.
 THE NUMBER OF TROLLEYS PROVIDED IS AS FOLLOWS:

GREEN SQUARE, MASCOT, DOMESTIC, INTERNATIONAL
 4 TROLLEYS AT EACH STATION:
 2 FOR THE DOWN PLATFORM AND 2 FOR THE UP PLATFORM.
 WOLLI CREEK 2 TROLLEYS:
 1 FOR THE DOWN PLATFORM AND 1 FOR THE UP PLATFORM.

**WRONG RUNNING-DIRECTION AND
 UNSIGNALLED MOVEMENTS**

IF WRONG RUNNING-DIRECTION OR UNSIGNALLED MOVEMENTS NEED TO BE MADE BETWEEN SYDNEY'S YARD LIMITS AND SYDENHAM'S YARD LIMITS, THE SIGNALLER AT SYDENHAM MUST TREAT THE SECTION AS A CONSOLIDATED YARD AND APPLY THE PROVISIONS OF NTR 418.
 IN ADDITION:

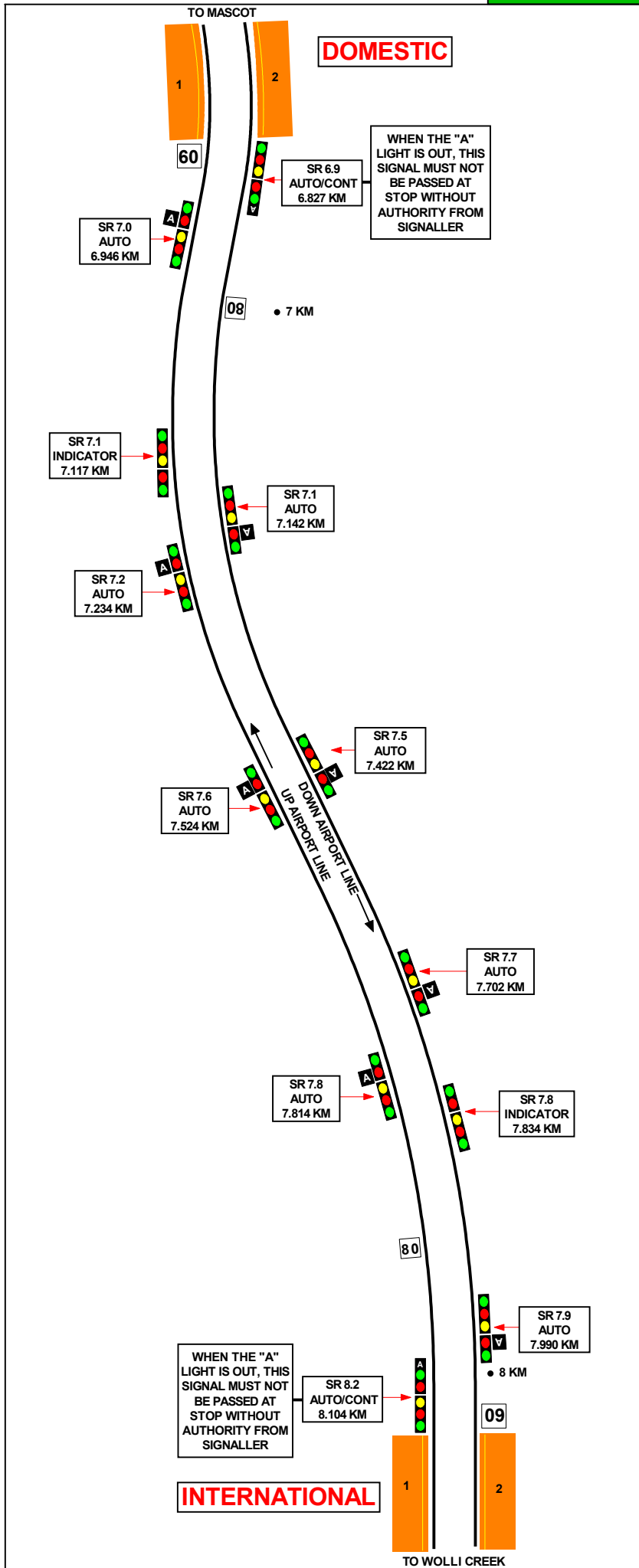
- HEADLIGHTS MUST BE SWITCHED ON BETWEEN PLATFORMS, AND
- RAIL TRAFFIC MUST NOT EXCEED 10KM/H.

1 IN 400

1 IN 115

1 IN 137

1 IN 400



SECTION : **DOMESTIC TO INTERNATIONAL**
 MAP SET : **CENTRAL TO TURRELLA**
 UPDATED TO : 8 April 2024

GRADIENT

INFORMATION

CONTROLLED FROM : **RAIL OPERATIONS CENTRE**

RADIO AREA CODE : **005 (SYDENHAM)**

SPECIAL POINTS OF INTEREST**GENERAL INSTRUCTIONS
AIRPORT LINE**

FIRE TELEPHONES ARE INSTALLED IN THE AIRPORT LINE TUNNEL AT VARIOUS LOCATIONS ABOUT 120 METRES APART, AND ARE CONNECTED TO OPERATIONS CONTROL. THEY ARE PAINTED RED TO DISTINGUISH THEM FROM OTHER PHONES. THESE TELEPHONES MUST ONLY BE USED IN THE CASE OF A FIRE OR AN EMERGENCY.

TROLLEYS FOR USE BY EMERGENCY SERVICES

PORTABLE TROLLEYS FOR USE DURING AN EMERGENCY SITUATION ARE PROVIDED AT ALL STATIONS ON THE AIRPORT LINE.

THE TROLLEYS ARE LOCATED UNDERNEATH THE PLATFORM COPING AT THE STATIONS.
 THE NUMBER OF TROLLEYS PROVIDED IS AS FOLLOWS:

GREEN SQUARE, MASCOT, DOMESTIC, INTERNATIONAL
 4 TROLLEYS AT EACH STATION:
 2 FOR THE DOWN PLATFORM AND 2 FOR THE UP PLATFORM.
 WOLLI CREEK 2 TROLLEYS:
 1 FOR THE DOWN PLATFORM AND 1 FOR THE UP PLATFORM.

**WRONG RUNNING-DIRECTION AND
UNSIGNALLED MOVEMENTS**

IF WRONG RUNNING-DIRECTION OR UNSIGNALLED MOVEMENTS NEED TO BE MADE BETWEEN SYDNEY'S YARD LIMITS AND SYDENHAM'S YARD LIMITS, THE SIGNALLER AT SYDENHAM MUST TREAT THE SECTION AS A CONSOLIDATED YARD AND APPLY THE PROVISIONS OF NTR 418. IN ADDITION:

- HEADLIGHTS MUST BE SWITCHED ON BETWEEN PLATFORMS, AND
- RAIL TRAFFIC MUST NOT EXCEED 10KM/H.

1 IN 400

1 IN 39

1 IN 71

1 IN 400

INTERNATIONAL

TO DOMESTIC

1

2

SECTION : **INTERNATIONAL TO WOLLI CREEK**
 MAP SET : **CENTRAL TO TURRELLA**
 UPDATED TO : 8 April 2024

GRADIENT

INFORMATION

CONTROLLED FROM : **RAIL OPERATIONS CENTRE**RADIO AREA CODE : **005** (SYDENHAM)

SPECIAL POINTS OF INTEREST
GENERAL INSTRUCTIONS
AIRPORT LINE

FIRE TELEPHONES ARE INSTALLED IN THE AIRPORT LINE TUNNEL AT VARIOUS LOCATIONS ABOUT 120 METRES APART, AND ARE CONNECTED TO OPERATIONS CONTROL. THEY ARE PAINTED RED TO DISTINGUISH THEM FROM OTHER PHONES.
 THESE TELEPHONES MUST ONLY BE USED IN THE CASE OF A FIRE OR AN EMERGENCY.

TROLLEYS FOR USE BY EMERGENCY SERVICES

PORTABLE TROLLEYS FOR USE DURING AN EMERGENCY SITUATION ARE PROVIDED AT ALL STATIONS ON THE AIRPORT LINE.

THE TROLLEYS ARE LOCATED UNDERNEATH THE PLATFORM COPING AT THE STATIONS.

THE NUMBER OF TROLLEYS PROVIDED IS AS FOLLOWS:

GREEN SQUARE, MASCOT, DOMESTIC, INTERNATIONAL

4 TROLLEYS AT EACH STATION:

2 FOR THE DOWN PLATFORM AND 2 FOR THE UP PLATFORM.
 WOLLI CREEK 2 TROLLEYS:

1 FOR THE DOWN PLATFORM AND 1 FOR THE UP PLATFORM.

WRONG RUNNING-DIRECTION AND
UNSIGNALLED MOVEMENTS

IF WRONG RUNNING-DIRECTION OR UNSIGNALLED MOVEMENTS NEED TO BE MADE BETWEEN SYDNEY'S YARD LIMITS AND SYDENHAM'S YARD LIMITS, THE SIGNALLER AT SYDENHAM MUST TREAT THE SECTION AS A CONSOLIDATED YARD AND APPLY THE PROVISIONS OF NTR 418.
 IN ADDITION:

- HEADLIGHTS MUST BE SWITCHED ON BETWEEN PLATFORMS, AND

- RAIL TRAFFIC MUST NOT EXCEED 10KM/H.

1 IN 400

1 IN 44

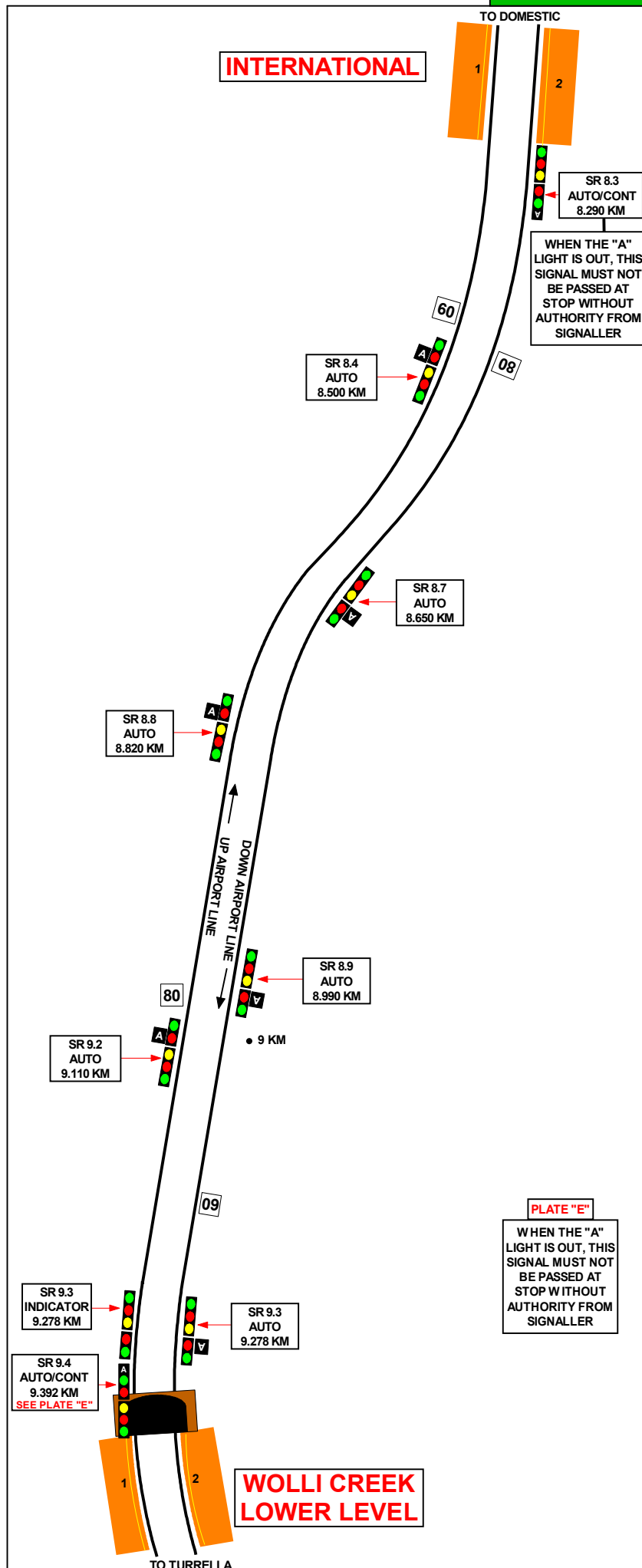
1 IN 51

1 IN 35

1 IN 100

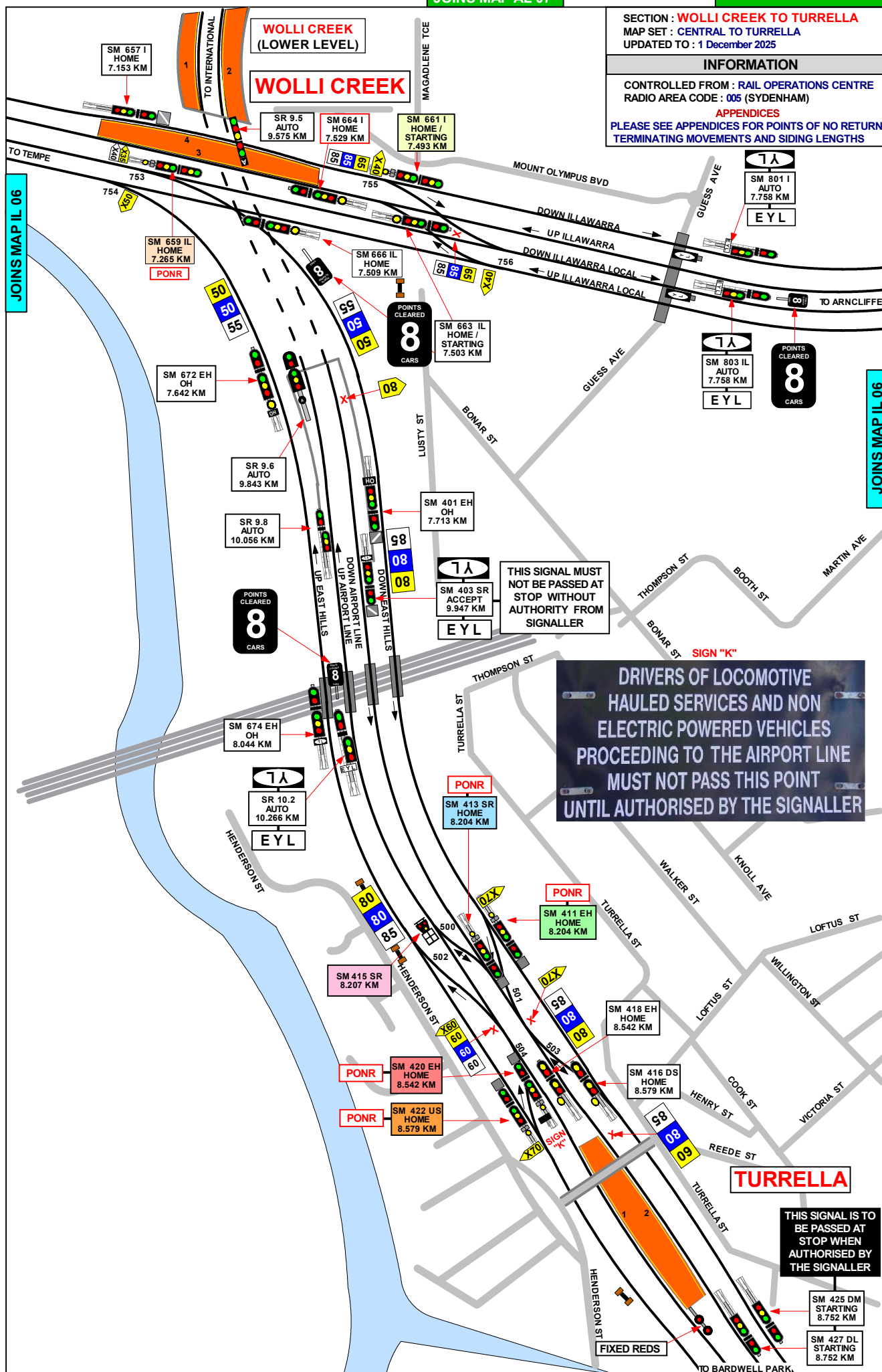
PLATE "E"

WHEN THE "A" LIGHT IS OUT, THIS SIGNAL MUST NOT BE PASSED AT STOP WITHOUT AUTHORITY FROM SIGNALLER



**PLEASE SEE APPENDICES FOR POINTS OF NO RETURN,
TERMINATING MOVEMENTS AND SIDING LENGTHS**

JOINS MAP EH 02



SIGNAL	DESTINATION	INDICATION
SM 415 SR	DOWN MAIN	DM
	DOWN LOCAL	DL
	UP LOCAL	UL

SIGNAL	DESTINATION	INDICATION
SM 413 SR	DOWN MAIN (M)	M
	DOWN MAIN (S)	DM
	DOWN LOCAL (M)	L
	DOWN LOCAL (S)	DL

SIGNAL	DESTINATION	INDICATION
SM 411 EH	DOWN MAIN (M)	M
	DOWN MAIN (S)	DM
	DOWN LOCAL (M)	L
	DOWN LOCAL (S)	DL

SIGNAL	DESTINATION	INDICATION
SM 422 US	UP EAST HILLS (M)	E
	UP EAST HILLS (S)	EH
	UP AL (M)	A
	UP AL (S)	AL

SIGNAL	DESTINATION	INDICATION
SM 420 EH	UP EAST HILLS (M)	E
	UP EAST HILLS (S)	EH
	UP AL (M)	A
	UP AL (S)	AL

SECTION : **WOLLI CREEK TO TURRELLA**MAP SET : **CENTRAL TO TURRELLA**

UPDATED TO : 8 April 2024

INFORMATIONCONTROLLED FROM : **RAIL OPERATIONS CENTRE**RADIO AREA CODE : **005** (SYDENHAM)

FIRE TELEPHONES ARE INSTALLED IN THE AIRPORT LINE TUNNEL AT VARIOUS LOCATIONS ABOUT 120 METRES APART, AND ARE CONNECTED TO OPERATIONS CONTROL. THEY ARE PAINTED RED TO DISTINGUISH THEM FROM OTHER PHONES.

THESE TELEPHONES MUST ONLY BE USED IN THE CASE OF A FIRE OR AN EMERGENCY.

TROLLEYS FOR USE BY EMERGENCY SERVICES.
PORTABLE TROLLEYS FOR USE DURING AN EMERGENCY SITUATION ARE PROVIDED AT ALL STATIONS ON THE AIRPORT LINE.

THE TROLLEYS ARE LOCATED UNDERNEATH THE PLATFORM COPING AT THE STATIONS.

THE NUMBER OF TROLLEYS PROVIDED IS AS FOLLOWS:

GREEN SQUARE, MASCOT, DOMESTIC, INTERNATIONAL
4 TROLLEYS AT EACH STATION:
2 FOR THE DOWN PLATFORM AND 2 FOR THE UP PLATFORM.
WOLLI CREEK 2 TROLLEYS:
1 FOR THE DOWN PLATFORM AND 1 FOR THE UP PLATFORM.

APPENDICES

PLEASE SEE APPENDICES FOR POINTS OF NO RETURN,
TERMINATING MOVEMENTS AND SIDING LENGTHS