

# Lookout Working Worksite Protection for Yennora to Cabramatta routine network maintenance activities

<b>DOCUMENT NO.</b>	D2021/26077
<b>WORK DESCRIPTION</b>	Routine network maintenance activities – Yennora to Cabramatta (Lookout Working)
<b>WPP Number</b>	SW4B 10108
<b>SCOPE:</b>	<p>This SWI is applicable for the worksite protection arrangements using lookout working concerning routine network maintenance, defect management and repair of assets within the limits specified below and in the attached plan.</p> <p>Work activities include:</p> <ul style="list-style-type: none"> <li>Routine preventative and corrective work such as inspections and maintenance as appropriate for the type of protection being applied as part of this plan.</li> </ul>
<b>AUTHORISATIONS:</b>	<p><b>Protection Officer:</b> Protection Officer Level 1 or higher</p> <p><b>Lookout:</b> Engineering Hand signaller Level 1 or higher or Protection Officer Level 1 or higher.</p>
<b>SAFETY CONTROLS: Lookout working arrangements</b>	<p>The nominated worksite location for Lookout Working includes the <b>Up &amp; Down Old main south lines</b> between <b>YA 3 Signal</b> and <b>121 points Cabramatta</b>, including the <b>Up and Down Main South Lines</b> and the <b>Yennora Wool Siding</b>.</p> <p>The nominated worksite location for Lookout Working is a moving worksite, where workers are working along the track within the limits of the nominated worksite location up to the where the Lookout is established.</p> <p>As work moves along the track, the Protection Officer must assess the new location and:</p> <ul style="list-style-type: none"> <li>Establish and/or re-establish Lookouts as required to watch for approaching rail traffic from all entry points</li> <li>Designate and instruct which safe places the workers are to use as the work is completed along the work route within the worksite limits.</li> </ul>
<b>PRESTART REQUIREMENTS:</b>	<p>Protection Officer assessment checklist must be completed before instructions in this SWI are followed.</p> <p>Tools and equipment required:</p> <ul style="list-style-type: none"> <li>Protection Officer requires a phone to contact the Signaller.</li> <li>Lookouts require a high-visibility arm sleeve and a whistle/horn.</li> </ul>
<b>FURTHER INFORMATION:</b>	<p><i>NWT 300 Planning work in the Rail Corridor</i></p> <p><i>NWT 310 Lookout Working</i></p> <p><i>NPR 711 Using Lookouts</i></p> <p><i>NPR 751 Calculating Minimum Warning Time</i></p> <p><i>NPR 712 Protecting work from rail traffic on adjacent lines</i></p> <p><i>NGE 200 Walking in the Danger Zone</i></p> <p><i>NLA 320 Broadmeadow - Newcastle Interchange</i></p> <p><i>Lookout Working Prohibited Locations Register</i></p> <p><i>NLA 506</i></p>

## Protection Officer assessment checklist

Protection Officer's name:		Yes (Tick if Yes)
This document has not expired 12 months beyond the issue date.		
SWI details and protection arrangements have been reviewed and validated for the assessed worksite location, including: <ul style="list-style-type: none"> <li>On-site safety assessment has been completed for relevancy of works being undertaken</li> <li>The required protection details, environment and tasks are unchanged from the details of this SWI</li> </ul>		
The Protection Officer and Qualified Workers deploying qualifications are current and have practiced in the last 6 months. If not practiced, then a Rail Safety Coach must be contacted for guidance.		
Corridor Safety Number	Protection Officer Signature	Date

**Warning**

*If an above item does not apply, the Protection Officer must not use this Safe Work Instruction. A new worksite protection plan must be completed in accordance with NRF 014 Worksite Protection Pre-work briefing and NRF 015 Worksite Protection Plan.*

## Safe Work Instruction

# Lookout Working Worksite Protection for Yennora to Cabramatta routine network maintenance activities



## Worksite Protection Pre-work Briefing

Briefing date:  /  /

### Protection Officer details

name  signature  contact No.

Work location: **Yennora to Cabramatta**

Scope of work: **Routine network maintenance activities**

Worksite protection: **Lookout Working** Refer to Worksite Protection Plan for details

Hazards (e.g. Site specific hazards identified, including physical environment, human errors, plant and equipment)	Controls (to be implemented to eliminate or reduce the risk to the lowest practicable level)	Person responsible for Control
<b>Approaching rail traffic</b>	Lookouts must be trained and competent to perform lookout duties. Lookouts must be rotated if performing lookout for extended periods of time Workers to remain within worksite limits as set out in this procedure. Lookouts must be placed as per protection plan on page 8. Workers are to stop work and move to a safe place immediately on being warned by the lookouts	Protection Officer and Lookout
<b>Live adjacent lines</b>	Lookouts must provide warning to workers when rail traffic is approaching from the adjacent line in either direction.	Protection Officer and Lookout
<b>Two - way running / multiple entry points into worksite</b>	One Lookout placed watching each direction before work starts. Lookouts are to warn workers of approaching rail traffic, including rail traffic entering or travelling within the worksite. Workers are to stop work and move to a safe place.	Protection Officer and Lookout
<b>Obstruction to Minimum Sighting Distance</b>	Lookouts must provide warning to the workers whenever their line of sight is obstructed by passing rail traffic. Workers must stop work and move to a safe place and reassess positioning and method	Protection Officer and Lookout
<b>Adjoining/Surrounding Worksites</b>	Lookouts must have two independent audible warning devices that can be heard by workers over any noise generated by adjoining/surrounding worksites. Lookouts are to provide warning if their line of sight is obstructed by adjoining/surrounding worksites.	Protection Officer and Lookout
<b>Access to / Egress from worksite</b>	Access and egress points must be agreed prior to entering the danger zone, consideration should be given to ease of access and safest possible entry and exit points.	All
<b>Slips, trips, falls and hazards carrying equipment</b>	Protection Officer will assess and instruct when it is safe for workers to use <i>NGE 200 Walking in the Danger Zone</i> to move to the worksite or safe place.	All
<b>Mobile phone</b>	Mobile phones use is not permitted in the danger zone unless being used by maintenance staff for critical maintenance communications or recording of defects.	All



## Safe Work Instruction

# Lookout Working Worksite Protection for Yennora to Cabramatta routine network maintenance activities



## Worksite Protection Plan – Lookout Working

### Signaller details

name  Sefton Panel  02 8568 3467

### Protection Officer details

name  signature  contact No.  
 RSW or RIW No.  designation Planned duration

Workplace Supervisor details:

Type of work:

### Worksite location

on the  Up Old Main South line, Down Old Main South Line, Down Main South Line & Yennora Wool Siding

between  YA 3 Signal (Yennora) and  121 Points (Cabramatta)

### Worksite assessment

Has the Lookout Working Prohibited Locations Register been consulted? Yes ☐

### Warning method

Horn/Whistle

Voice/Touch

### Minimum Warning Time Calculations

Maximum track speed  100km/h

Number of Lookouts used  2 Position of Lookouts  26.708km to  31.820 km

Number of additional Lookouts\* used  0 Position of Lookouts  km to  km

**Note** - Lookouts are relocated to positions within these KMs as workers move along the worksite.

2 sec	+	3sec	+	10 sec		15 sec	100 km/h	417 metres
2 sec	+	3 sec	+	10 sec	= Minimum Warning Time (MWT)	15sec	25 km/h	105 metres
2 sec	+	3sec	+	10 sec		15sec	80km/h	334 meters
2 sec	+	3sec	+	10 sec		15 sec	40 km/h	167metres
See Time (S)		Move Time (M)		Safe Time	(S+M+10 sec = MWT)		Track speed	Minimum Sighting Distance as calculated

**Note** – Additional MWT calculations can be recorded in the Protection Officer's Diary.

### Where are the safe places identified for the Lookouts and the workers?

Lookouts:  Up and Down cess

Workers:  Up and Down cess, Wide 6 Foot

Ensure the workers have been briefed about these work details Yes ☐

Diagrams, notes, and detailed instructions are over the next pages. These are to be read and followed as part of this worksite protection plan for Lookout Working.

## Lookout Working Worksite Protection for Yennora to Cabramatta routine network maintenance activities

### INSTRUCTIONS:

1. Workers enter the rail corridor via access gate @ **M16 26.777U**
2. Protection Officer briefs workers about the worksite protection arrangements.
3. Protection Officer contacts Sefton Panel and tells the Signaller about the use of Lookout Working.
4. Establish Lookouts at designated locations.
5. Workers start work up to designated locations.
6. Workers move to safe place.
7. Re-establish Lookouts at next designated location.
8. Repeat steps 6-8 until work is complete.
9. Workers move to a safe place.
10. Recall lookouts.
11. Workers egress the worksite via Gate
12. Protection Officer contacts **Sefton Panel** to end Lookout Working.

### ADDITIONAL DETAILS

#### Obstruction to Minimum Sighting Distance

Rail traffic coming to and from, or stabled in **Fairfield Station** may impede the Lookout's Minimum Sighting Distance for a short portion of the work route.

A Lookout is placed for each direction of rail traffic approach and provide warning for any rail traffic approach. Workers must move into a safe place upon a Lookout providing warning regardless of which line the rail traffic is approaching on.

Lookouts must provide warning to workers when Minimum Sighting Distance is impeded by rail traffic on adjacent lines. All workers must remain in a safe place until Lookouts regain Minimum Sighting Distance.

#### No safe place within platform limits

Workers must not enter the Danger Zone within the limits of any platforms at **Fairfield Station**.

#### Lookout Working Prohibited Locations

Workers must not enter the Danger Zone on the:

Down Old Main South line between **29.000 km** and **29.400 km**.



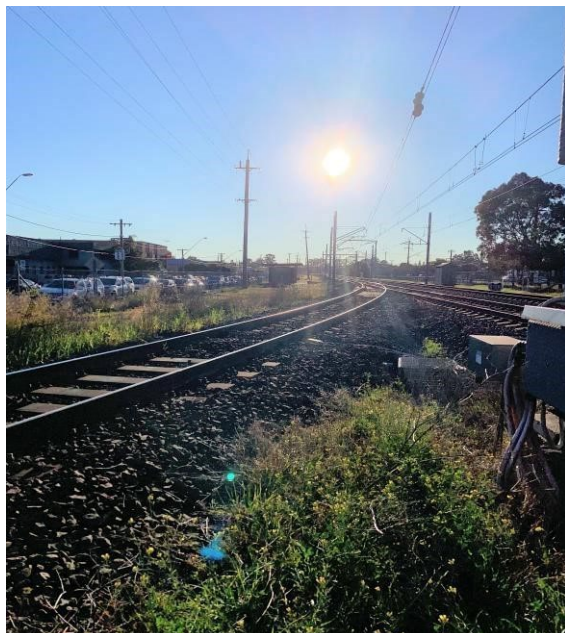
**LOOKOUTS**



**Image 1:** View towards Yennora Wool Siding at Military Road Level Crossing.



**Image 2:** View towards Yennora Wool Siding at Military Road Level Crossing



**Image 3:** View towards City (Guildford Station) and 52 points at the Pedestrian Level Crossing on the Yennora Wool Siding



**Image 4:** View towards Country (Yennora Station) near Pedestrian Level Crossing on the Yennora Wool Siding

ACCESS /  
EGRESS

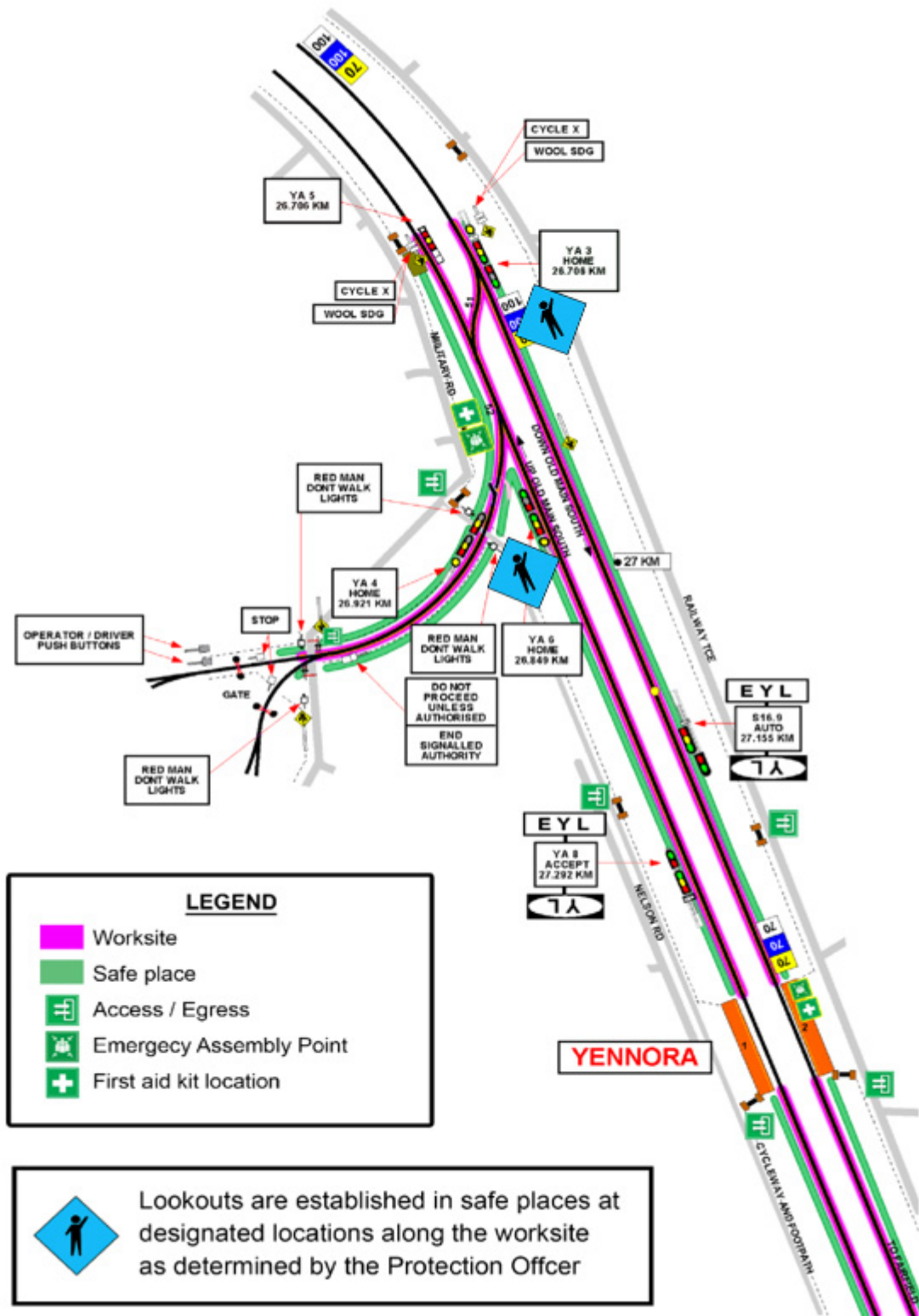


**Image 5:** Access gate NO M16 26.777U Located on Military Rd



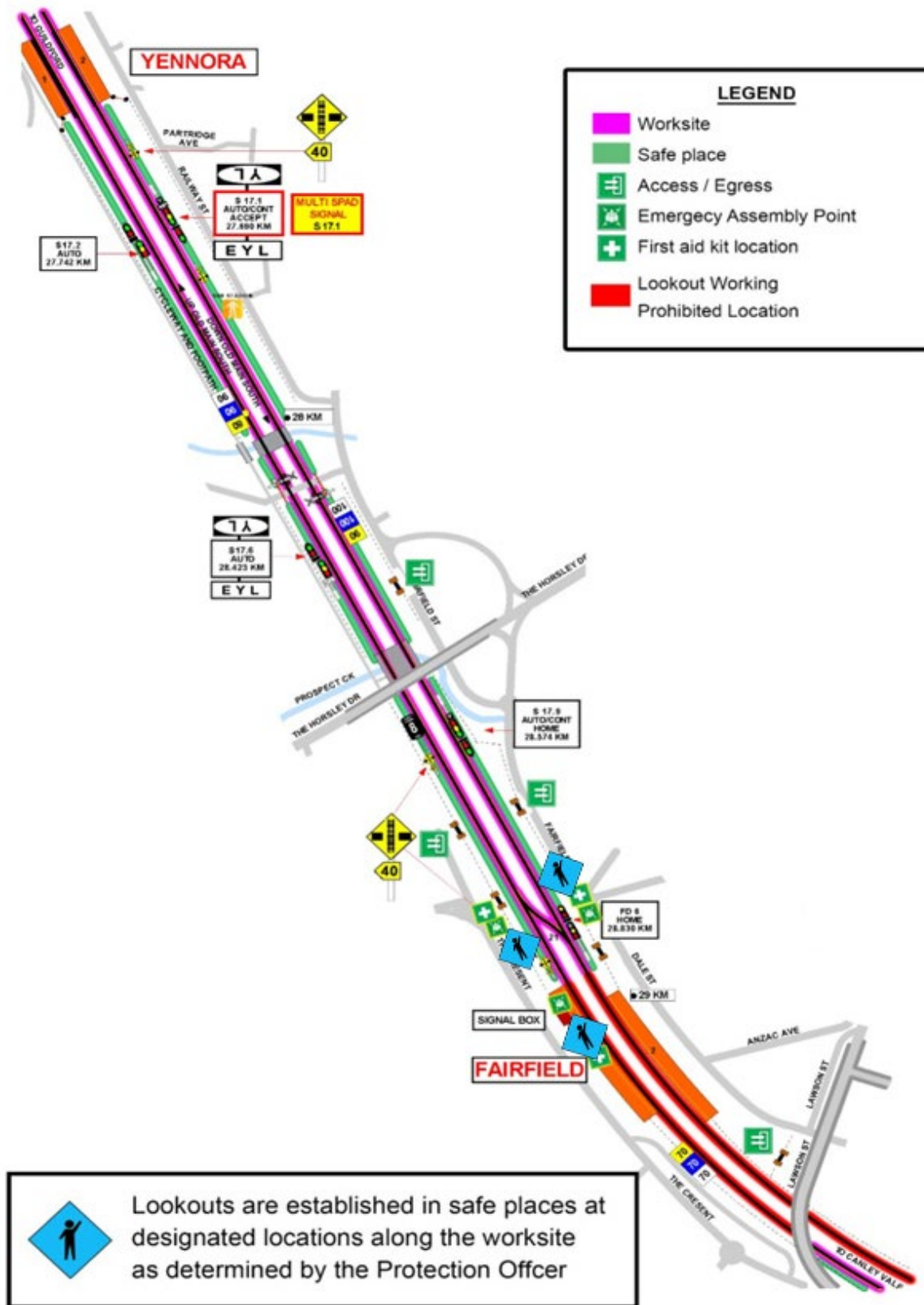
# Lookout Working Worksite Protection for Yennora to Cabramatta routine network maintenance activities

## Diagram



# Lookout Working Worksite Protection for Yennora to Cabramatta routine network maintenance activities

Diagram



# Lookout Working Worksite Protection for Yennora to Cabramatta routine network maintenance activities



### Protection Officer's diary

[illegible]