

DRIVERS ROUTE KNOWLEDGE DIAGRAMS

MAIN NORTH LINE

STRATHFIELD

NORTH STRATHFIELD

CONCORD WEST

RHODES

MEADOWBANK

WEST RYDE

DENISTONE

EASTWOOD

EPPING

CHELTENHAM

BEECROFT

PENNANT HILLS

THORNLEIGH

NORMANHURST

HORNSBY

ASQUITH

MOUNT COLAH

MOUNT KURING-GAI

BEROWRA

Effective Date: August 2024

Version: 5.11

Explanatory Notes:

Navigate to your area of interest via the station index or by using links created in Adobe bookmarks.

This document is approved for **route knowledge only**.

Do not use these diagrams for any safety related purpose without validating the information against a controlled source or in the field.

Information in these diagrams is uncontrolled.

Please report any updates to
gis.support@transport.nsw.gov.au

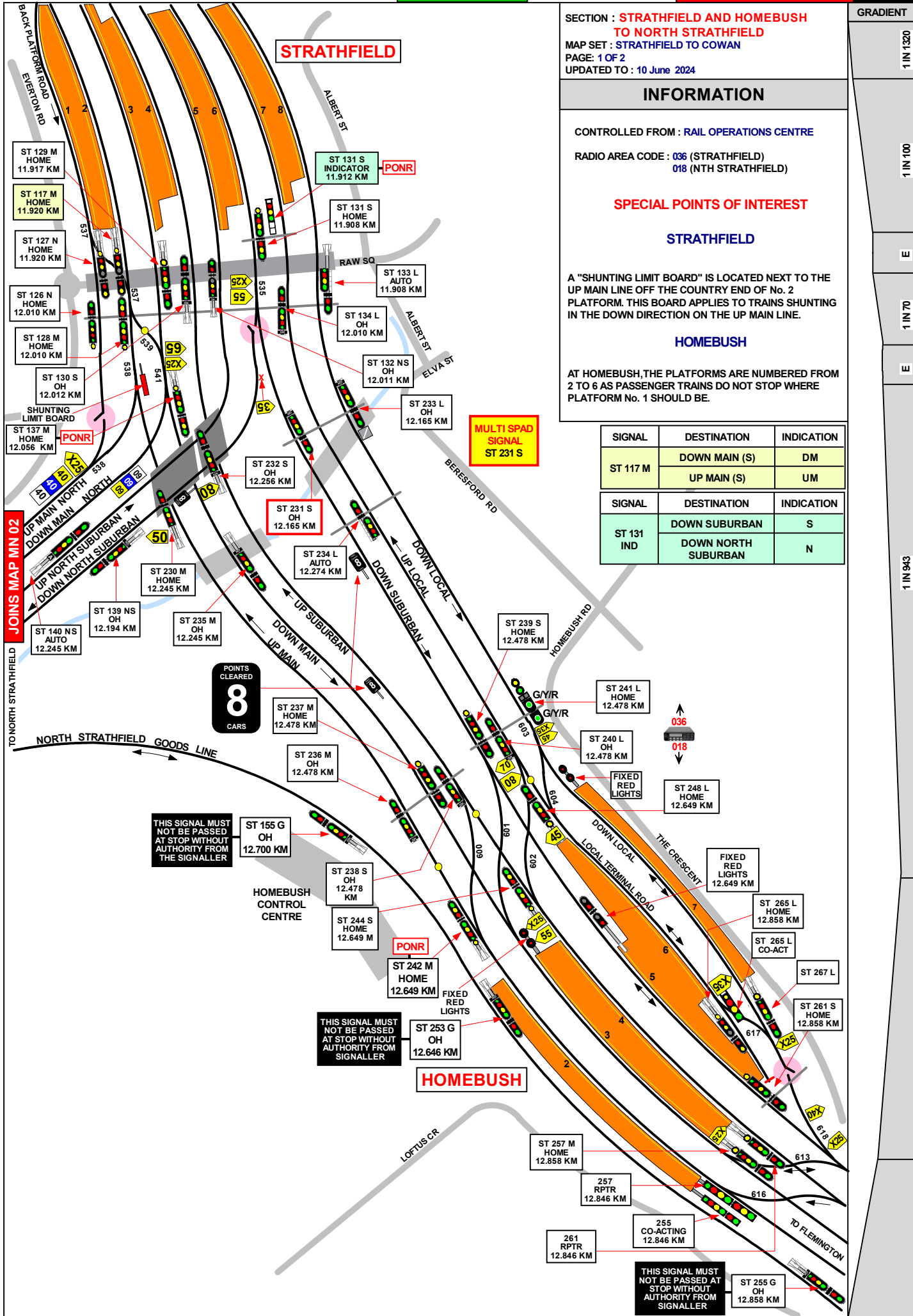


Copyright: Sydney Trains

Ownership: Geospatial Services

Location: TRIM Record

No.D2015/577



SECTION : STRATHFIELD AND HOMEBUSH TO NORTH STRATHFIELD
 MAP SET : STRATHFIELD TO COWAN
 PAGE: 1 OF 2
 UPDATED TO : 10 June 2024

GRADIENT
 1 IN 1320

INFORMATION

CONTROLLED FROM : RAIL OPERATIONS CENTRE
 RADIO AREA CODE : 036 (STRATHFIELD)
 018 (NTH STRATHFIELD)

SPECIAL POINTS OF INTEREST

STRATHFIELD

A "SHUNTING LIMIT BOARD" IS LOCATED NEXT TO THE UP MAIN LINE OFF THE COUNTRY END OF No. 2 PLATFORM. THIS BOARD APPLIES TO TRAINS SHUNTING IN THE DOWN DIRECTION ON THE UP MAIN LINE.

HOMEBUSH

AT HOMEBUSH, THE PLATFORMS ARE NUMBERED FROM 2 TO 6 AS PASSENGER TRAINS DO NOT STOP WHERE PLATFORM No. 1 SHOULD BE.

SIGNAL	DESTINATION	INDICATION
ST 117 M	DOWN MAIN (S)	DM
	UP MAIN (S)	UM
ST 131 IND	DOWN SUBURBAN	S
	DOWN NORTH SUBURBAN	N

1 IN 100
 E
 1 IN 70
 E
 1 IN 943



JOINS MAP MN 02

SECTION : **STRATHFIELD TO NORTH STRATHFIELD**
 MAP SET : STRATHFIELD TO COWAN
 PAGE: 2 OF 2
 UPDATED TO : 4 APRIL 2011

STRATHFIELD TERMINATING TRAINS (UNDER NORMAL CONDITIONS)		
FROM	TERMINATE AT	THEN GO TO
UP TRAINS	No.1 PLATFORM	THEN RETURN TO THE DOWN MAIN OR SHUNT FORWARD & RETURN TO THE No. 2 PLATFORM
	NO. 2 PLATFORM	THEN RETURN TO THE DOWN MAIN OR SHUNT FORWARD & RETURN TO No. 1 PLATFORM
DOWN TRAINS	No.3 PLATFORM	SHUNT TO NORTH STRATHFIELD JUNCTION CLEAR OF SHUNT SIGNAL No. 152 ON THE DOWN MAIN NORTH OR SHUNT SIGNAL No. 164 ON THE RELIEF AND RETURN TO STRATHFIELD
	No. 6 PLATFORM	SHUNT TO NORTH STRATHFIELD JUNCTION CLEAR OF SHUNT SIGNAL No. 152 ON THE DOWN MAIN NORTH OR SHUNT SIGNAL No. 164 ON THE DOWN RELIEF AND RETURN TO STRATHFIELD
	No. 8 PLATFORM	SHUNT TO HOMEBUSH AND RETURN ON THE UP LOCAL

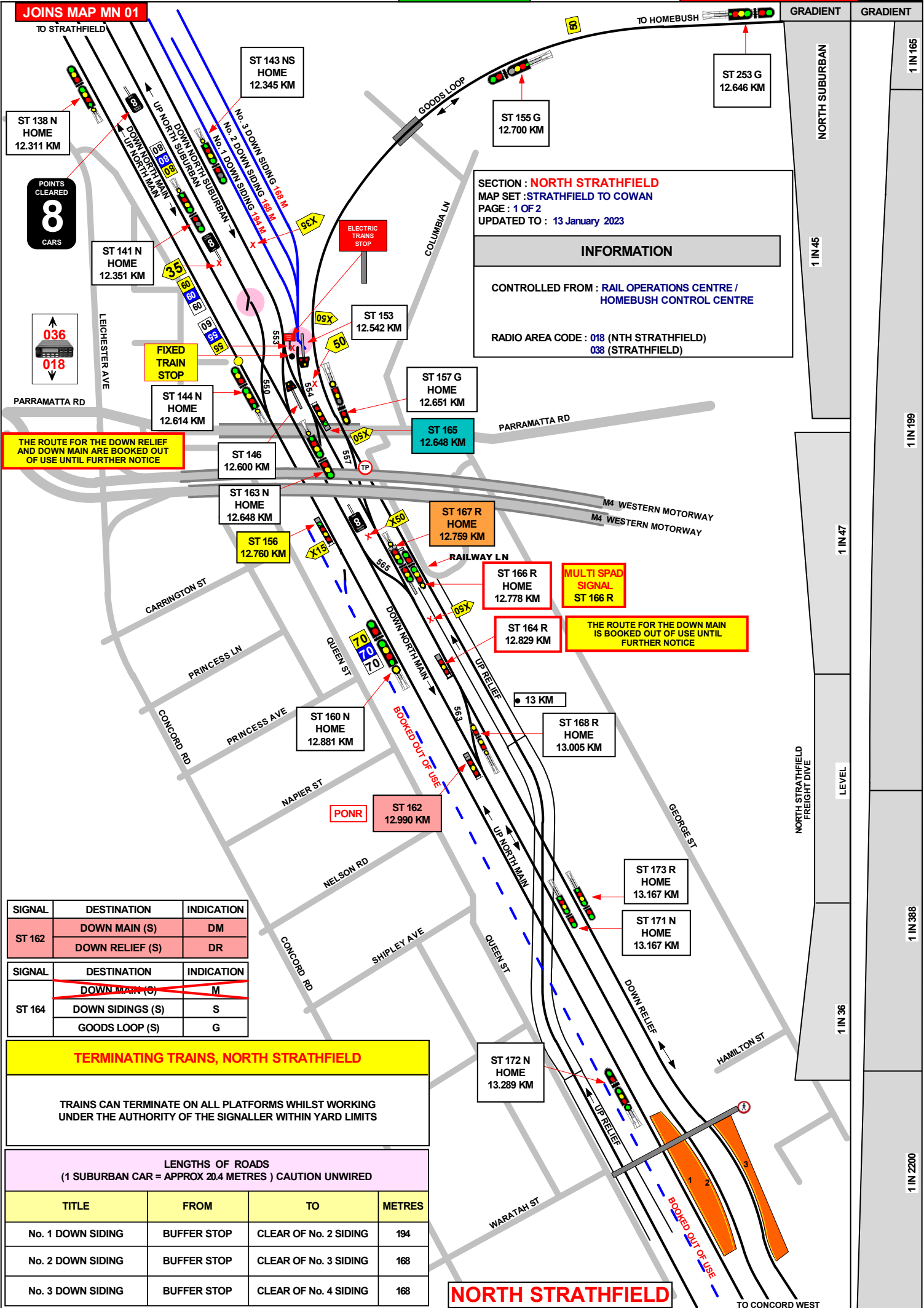
HOMEBUSH TERMINATING TRAINS (UNDER NORMAL CONDITIONS)		
FROM	TERMINATE AT	THEN GO TO
DOWN MAIN TRAINS	No. 3 PLATFORM	SHUNT FORWARD TO THE DOWN SUBURBAN AND RETURN THE EITHER No. 5 OR No. 6 PLATFORMS
DOWN SUBURBAN TRAINS	No.6 PLATFORM	RETURN TO UP SUBURBAN LINE OR SHUNT FORWARD AND THEN RETURN TO No. 6 PLATFORM
DOWN LOCAL TRAINS	No. 6 PLATFORM	THEN RETURN TO UP LOCAL LINE OR SHUNT FORWARD AND RETURN TO No. 5 PLATFORM
UP SUBURBAN TRAINS	No. 3 PLATFORM	RETURN TO DOWN MAIN OR DOWN SUBURBAN
	No. 4 PLATFORM	SHUNT FORWARD AND THEN RETURN TO THE DOWN SUBURBAN
	No. 5 PLATFORM	RETURN TO DOWN SUBURBAN LINE
	No. 6 PLATFORM	RETURN TO DOWN SUBURBAN LINE

PONR POINT OF NO RETURN		
SIGNAL No.	LOCATION	DESTINATIONS
ST 137 M	DOWN MAIN 12.056 KM	TURN OUT FOR MAIN NORTH
ST 131 S	DOWN SUBURBAN 11.908 KM	TURN OUT FOR MAIN NORTH
ST 242 M	UP MAIN 12.649 KM	TURN OUT FOR ALL STATION TRAINS

RADIO TRANSPONDERS LOCATIONS		
FIGURE 1 	FIGURE 2 	W HERE YOU SEE THE TRANSPONDER SYMBOL (FIGURE 1) ALONG THE MAP LOOK FOR THE YELLOW DOT (FIGURE 2) ON THE RAILWAY LINE THE ACTUAL LOCATION OF THE TRANSPONDER

SIGNAL	DESTINATION	INDICATION	SIGNAL	DESTINATION	INDICATION
ST 118 S	UP SUBURBAN (M)	DS	ST 131 IND	DOWN SUBURBAN (M)	S
	UP LOCAL (S)	L		DOWN NORTH SUBURBAN	N
SIGNAL	DESTINATION	INDICATION	SIGNAL	DESTINATION	INDICATION
ST 258	DOWN MAIN	DM	ST 117 M	DOWN MAIN (S)	DM
	DOWN SUBURBAN	DS		UP MAIN (S)	UM
	LOCAL TERMINAL RD	TR	ST 247	DOWN SUBURBAN (M)	DS
		UP SUBURBAN (S)		US	

JOINS MAP MN 01



SECTION : NORTH STRATHFIELD
MAP SET : STRATHFIELD TO COWAN
 PAGE : 1 OF 2
 UPDATED TO : 13 January 2023

INFORMATION

CONTROLLED FROM : RAIL OPERATIONS CENTRE /
 HOMEBUSHS CONTROL CENTRE

RADIO AREA CODE : 018 (NTH STRATHFIELD)
 038 (STRATHFIELD)

POINTS CLEARED
8
 CARS

036
018

THE ROUTE FOR THE DOWN RELIEF AND DOWN MAIN ARE BOOKED OUT OF USE UNTIL FURTHER NOTICE

MULTI SPAD SIGNAL ST 166 R

THE ROUTE FOR THE DOWN MAIN IS BOOKED OUT OF USE UNTIL FURTHER NOTICE

SIGNAL	DESTINATION	INDICATION
ST 162	DOWN MAIN (S)	DM
	DOWN RELIEF (S)	DR
SIGNAL	DESTINATION	INDICATION
ST 164	DOWN MAIN (S)	M
	DOWN SIDINGS (S)	S
	GOODS LOOP (S)	G

TERMINATING TRAINS, NORTH STRATHFIELD

TRAINS CAN TERMINATE ON ALL PLATFORMS WHILST WORKING UNDER THE AUTHORITY OF THE SIGNALLER WITHIN YARD LIMITS

LENGTHS OF ROADS
 (1 SUBURBAN CAR = APPROX 20.4 METRES) CAUTION UNWIRED

TITLE	FROM	TO	METRES
No. 1 DOWN SIDING	BUFFER STOP	CLEAR OF No. 2 SIDING	194
No. 2 DOWN SIDING	BUFFER STOP	CLEAR OF No. 3 SIDING	168
No. 3 DOWN SIDING	BUFFER STOP	CLEAR OF No. 4 SIDING	168

LENGTHS OF ROADS (1 SUBURBAN CAR = APPROX 20.4 METRES)			
TITLE	FROM	TO	METRES
No. 1 DOWN SIDING	BUFFER STOP	CLEAR OF No. 2 SIDING	194
No. 2 DOWN SIDING	BUFFER STOP	CLEAR OF No. 3 SIDING	168
No. 3 DOWN SIDING	BUFFER STOP	CLEAR OF No. 4 SIDING	168

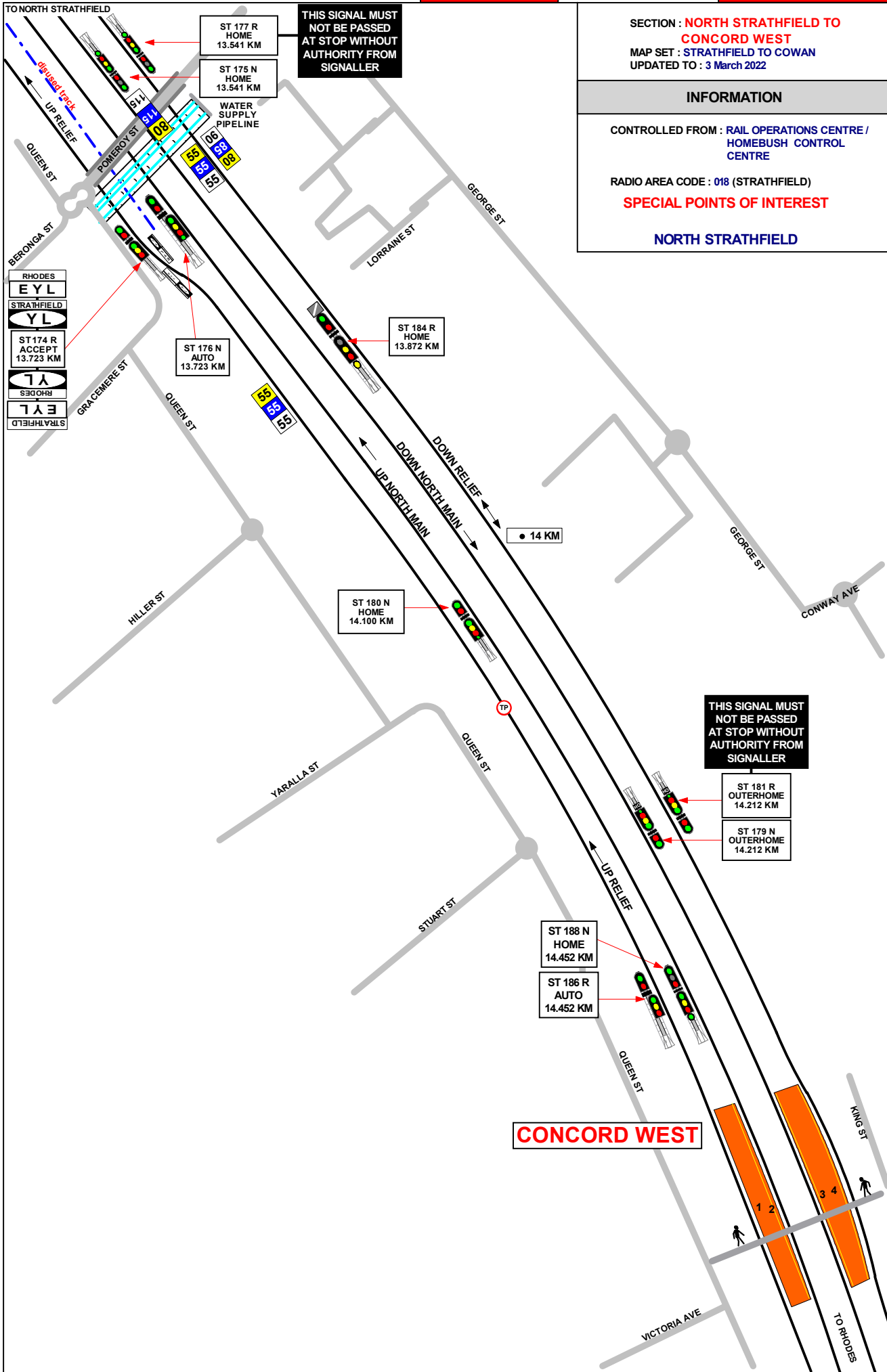
TERMINATING TRAINS, NORTH STRATHFIELD

TRAINS CAN TERMINATE ON ALL PLATFORMS WHILST WORKING UNDER THE AUTHORITY OF THE SIGNALLER WITHIN YARD LIMITS. REFER TO THE APPENDICES BOOK FOR FURTHER DETAILS

SIGNAL	DESTINATION	INDICATION
ST 165	DOWN RELIEF(S)	D
	UP RELIEF (S)	U
SIGNAL	DESTINATION	INDICATION
ST 156	UP MAIN (S)	UM
	DOWN SIDINGS (S)	DS
SIGNAL	DESTINATION	INDICATION
ST 167 R	DOWN RELIEF (M)	--
	DOWN RELIEF (S)	DR
	DOWN MAIN (M)	--
	DOWN MAIN (S)	DM
SIGNAL	DESTINATION	INDICATION
ST 164	DOWN MAIN (S)	M
	DOWN SIDINGS (S)	S
	GOODS LOOP (S)	G
SIGNAL	DESTINATION	INDICATION
ST 162	DOWN MAIN (S)	DM
	DOWN RELIEF (S)	DR

THE ROUTE FOR THE DOWN MAIN IS BOOKED OUT OF USE UNTIL FURTHER NOTICE

SECTION : NORTH STRATHFIELD MAP SET :STRATHFIELD TO COWAN PAGE : 2 OF 2 UPDATED TO : 1 March 2022
INFORMATION
CONTROLLED FROM : RAIL OPERATIONS CENTRE RADIO AREA CODE : 018 (NTH STRATHFIELD) 038 (STRATHFIELD)
SPECIAL POINTS OF INTEREST NORTH STRATHFIELD
RUNAWAY CATCH POINTS
RUNAWAY CATCH POINTS ARE PROVIDED ON THE UP NORTH SUBURBAN LINE APPROXIMATELY 242 METRES ON THE HORNSBY SIDE OF SIGNAL No. ST 140 . THESE CATCH POINTS ARE CONTROLLED BY No. 550 LEVER IN STRATHFIELD SIGNALBOX .
SHUNTING ON THE UP MAIN LINE
WHEN IT IS NECESSARY FOR A TRAIN TO SHUNT PASS UP HOME SIGNAL No. ST 144 ON THE UP MAIN LINE TO AVOID THE POSSIBILITY OF DERAILMENT DUE TO THE RUNAWAY CATCH POINTS ON THE UP NORTH SUBURBAN LINE ,THE SIGNALLER SHALL ENSURE THE No. 560 POINTS ARE SET FOR THE NORTH MAIN LINE BEFORE CLEARING THE SHUNTING SIGNAL No. ST 144 .
FIXED TRAIN STOPS
A FIXED TRAIN STOP IS LOCATED NEXT TO No. 554 CATCH POINTS BETWEEN THE DOWN NORTH SUBURBAN AND THE DOWN GOODS SIDING APPROXIMATELY 59 METRES ON THE SYDNEY SIDE OF SIGNAL No. ST 146 G AND No. 554 POINTS
STOP BOARDS
A STOP BOARD , INSCRIBED "STOP ELECTRIC TRAINS" IS LOCATED NEXT TO THE FIXED TRAIN STOP



THIS SIGNAL MUST NOT BE PASSED AT STOP WITHOUT AUTHORITY FROM SIGNALLER

SECTION : NORTH STRATHFIELD TO CONCORD WEST
MAP SET : STRATHFIELD TO COWAN
UPDATED TO : 3 March 2022

INFORMATION

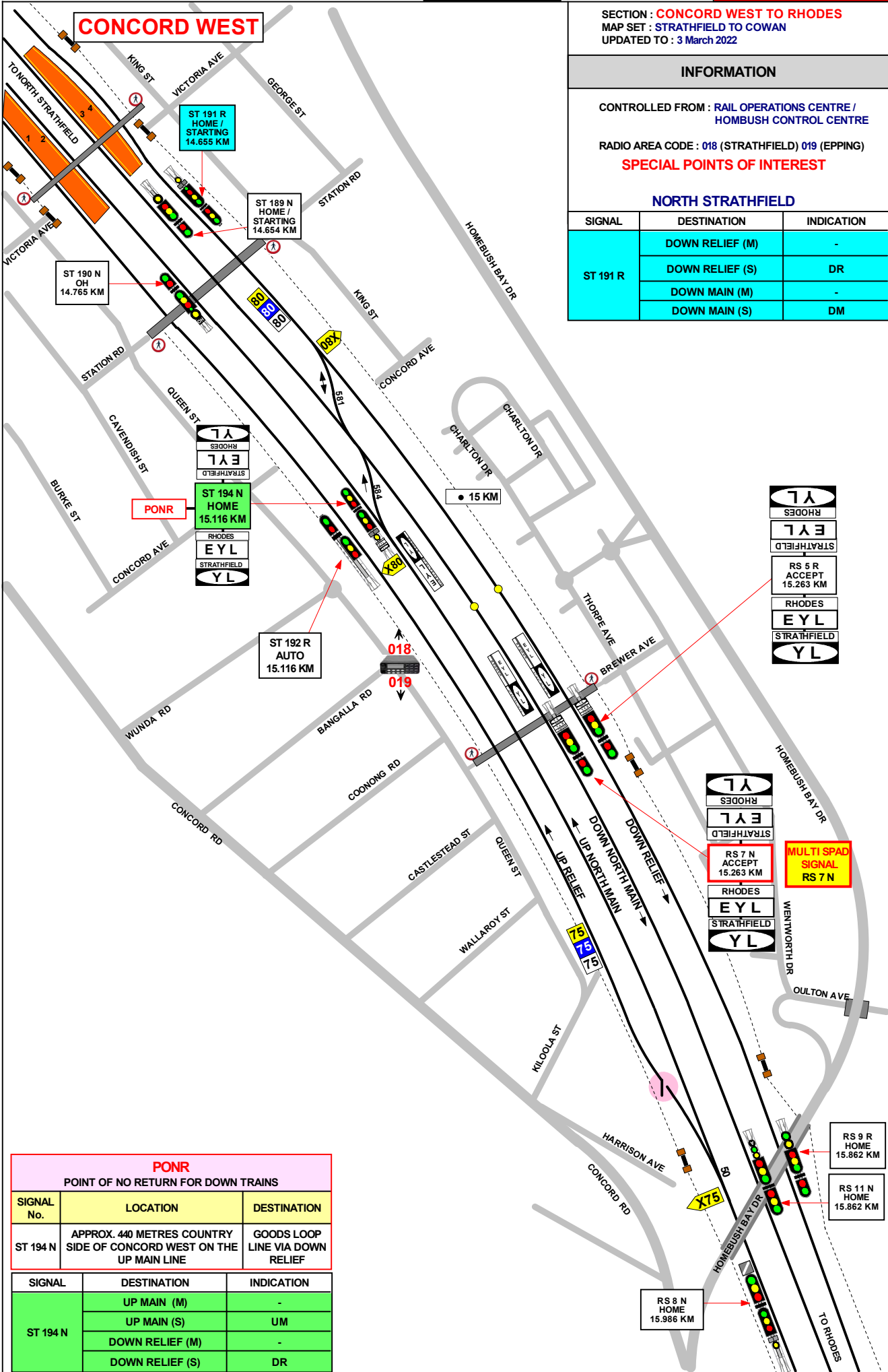
CONTROLLED FROM : RAIL OPERATIONS CENTRE /
HOMEBUSH CONTROL CENTRE

RADIO AREA CODE : 018 (STRATHFIELD)

SPECIAL POINTS OF INTEREST

NORTH STRATHFIELD

CONCORD WEST



SECTION : **CONCORD WEST TO RHODES**
 MAP SET : STRATHFIELD TO COWAN
 UPDATED TO : 3 March 2022

INFORMATION

CONTROLLED FROM : RAIL OPERATIONS CENTRE / HOMBUSH CONTROL CENTRE

RADIO AREA CODE : 018 (STRATHFIELD) 019 (EPPING)

SPECIAL POINTS OF INTEREST

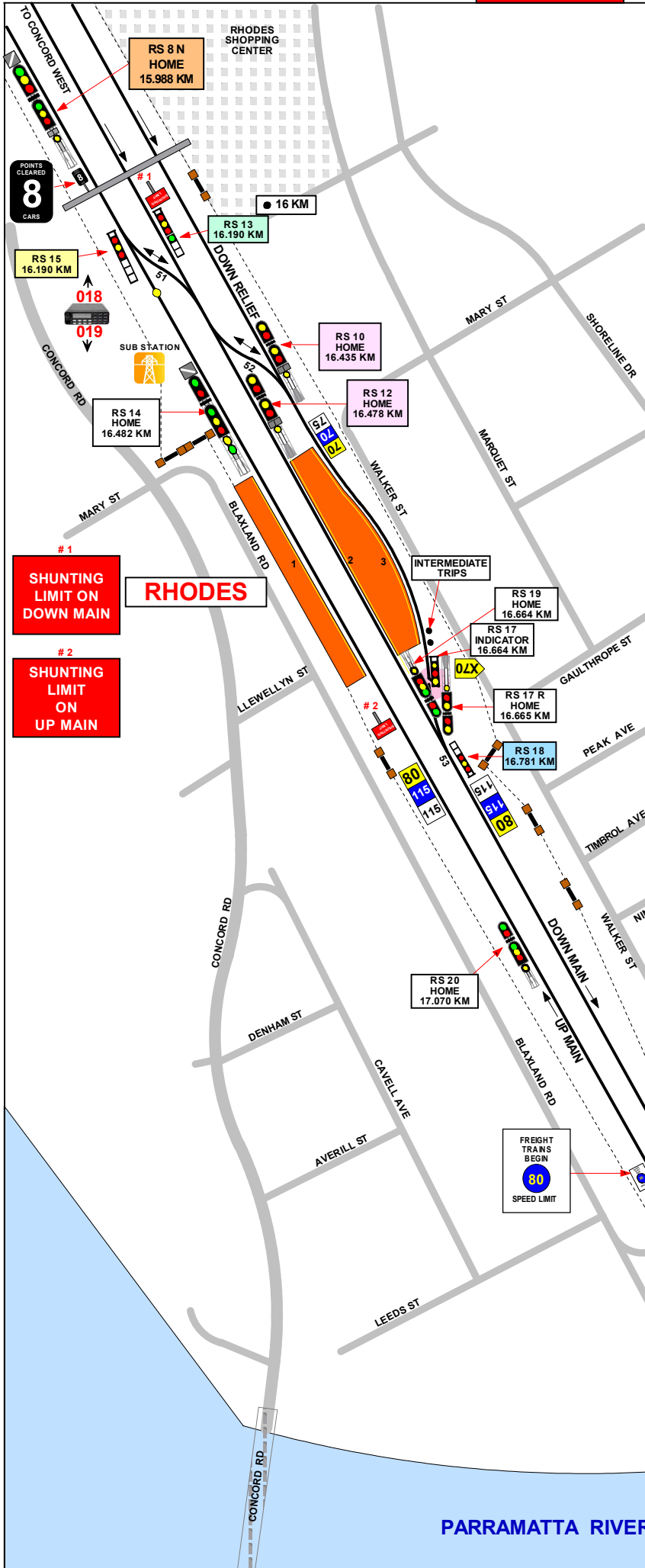
NORTH STRATHFIELD

SIGNAL	DESTINATION	INDICATION
ST 191 R	DOWN RELIEF (M)	-
	DOWN RELIEF (S)	DR
	DOWN MAIN (M)	-
	DOWN MAIN (S)	DM

PONR
 POINT OF NO RETURN FOR DOWN TRAINS

SIGNAL No.	LOCATION	DESTINATION
ST 194 N	APPROX. 440 METRES COUNTRY SIDE OF CONCORD WEST ON THE UP MAIN LINE	GOODS LOOP LINE VIA DOWN RELIEF

SIGNAL	DESTINATION	INDICATION
ST 194 N	UP MAIN (M)	-
	UP MAIN (S)	UM
	DOWN RELIEF (M)	-
	DOWN RELIEF (S)	DR



SECTION : **RHODES TO MEADOWBANK**
 MAP SET : STRATHFIELD TO COWAN
 UPDATED TO : 29 January 2023

GRADIENT

1 IN 730

1 IN 1320

1 IN 600

1 IN 173

1 IN 660

1 IN 790

LEVEL

INFORMATION

CONTROLLED FROM : RAIL OPERATIONS CENTRE /
 HOMEBUSH CONTROL CENTRE

RADIO AREA CODE : 018 (STRATHFIELD) 019 (EPPING)

SPECIAL POINTS OF INTEREST

NLA 300 STRATHFIELD - HORNSBY

RHODES
 TERMINATING TRAINS (UNDER NORMAL CONDITIONS)

FROM	TERMINATE AT	THEN GO TO
DOWN LINES	No. 2 PLATFORM	RETURN TO THE UP MAIN LINE VIA No. 51 POINTS
	No. 3 PLATFORM	RETURN TO THE UP MAIN LINE VIA Nos. 51 AND 52 POINTS
UP LINE	No. 1 PLATFORM	SHUNT FORWARD, AND THEN RETURN TO THE DOWN MAIN LINE VIA No. 51 POINTS, OR THE DOWN RELIEF LINE VIA Nos. 51 AND 52 POINTS

SIGNAL	DESTINATION	INDICATION
RS 15	DOWN RELIEF (S)	R
	DOWN MAIN (S)	D
	UP MAIN (S)	U

SIGNAL	DESTINATION	INDICATION
RS 13	DOWN RELIEF (S)	R
	DOWN MAIN (S)	D

SIGNAL	DESTINATION	INDICATION
RS 10	DOWN MAIN (S)	DM
	UP MAIN (M)	UM

SIGNAL	DESTINATION	INDICATION
RS 18	DOWN MAIN (S)	DM
	DOWN RELIEF	DR

SIGNAL	DESTINATION	INDICATION
RS 8 N	UP RELIEF (M)	-
	UP RELIEF (S)	UR
	UP MAIN (M)	-
	UP MAIN (S)	UM

WHEN THE "A" LIGHT IS OUT THIS SIGNAL IS TO BE PASSED AT STOP WHEN AUTHORIZED BY THE SIGNALLER

7 E
 RS 23 N STARTING 17.350 KM
 Y L

7 E
 RS 22 N ACCEPT 17.710 KM
 Y L

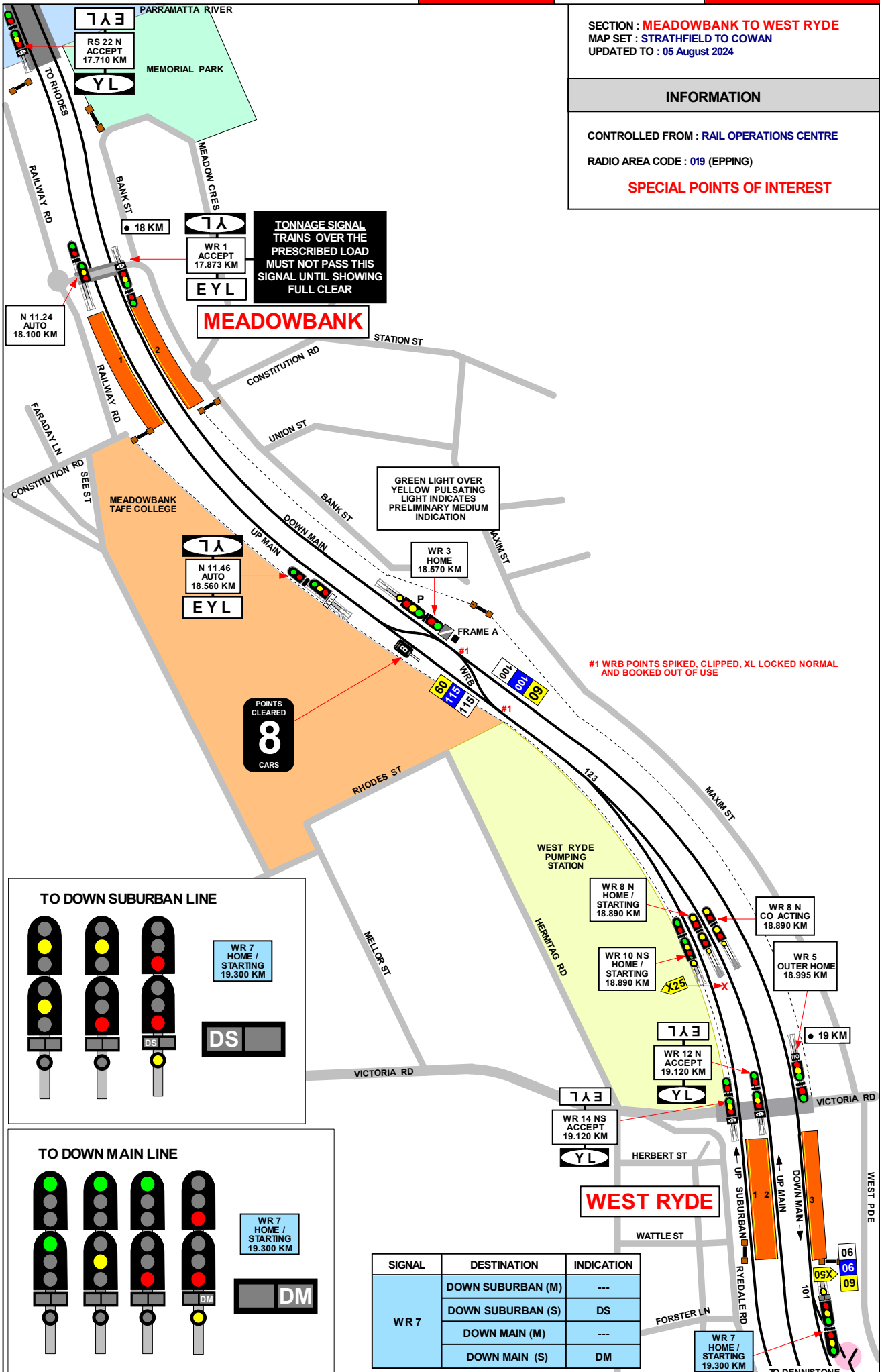
SECTION : **MEADOWBANK TO WEST RYDE**
 MAP SET : STRATHFIELD TO COWAN
 UPDATED TO : 05 August 2024

INFORMATION

CONTROLLED FROM : RAIL OPERATIONS CENTRE
 RADIO AREA CODE : 019 (EPPING)

SPECIAL POINTS OF INTEREST

GRADIENT
1 IN 330
1 IN 132
1 IN 60
1 IN 330

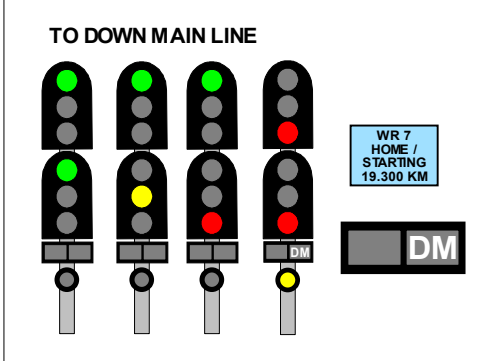
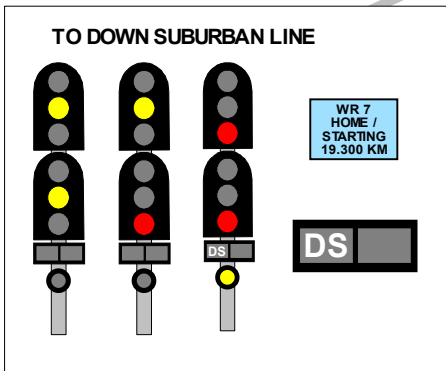


TONNAGE SIGNAL
 TRAINS OVER THE
 PRESCRIBED LOAD
 MUST NOT PASS THIS
 SIGNAL UNTIL SHOWING
 FULL CLEAR

GREEN LIGHT OVER
 YELLOW PULSATING
 LIGHT INDICATES
 PRELIMINARY MEDIUM
 INDICATION

#1 WRB POINTS SPIKED, CLIPPED, XL LOCKED NORMAL
 AND BOOKED OUT OF USE

POINTS
 CLEARED
8
 CARS



SIGNAL	DESTINATION	INDICATION
WR 7	DOWN SUBURBAN (M)	---
	DOWN SUBURBAN (S)	DS
	DOWN MAIN (M)	---
	DOWN MAIN (S)	DM

WEST RYDE

SECTION : WEST RYDE TO DENISTONE
 MAP SET : STRATHFIELD TO COWAN
 UPDATED TO : 19 February 2020

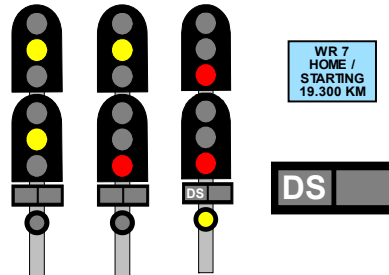
INFORMATION

CONTROLLED FROM : RAIL OPERATIONS CENTRE
 RADIO AREA CODE : 019 (EPPING)

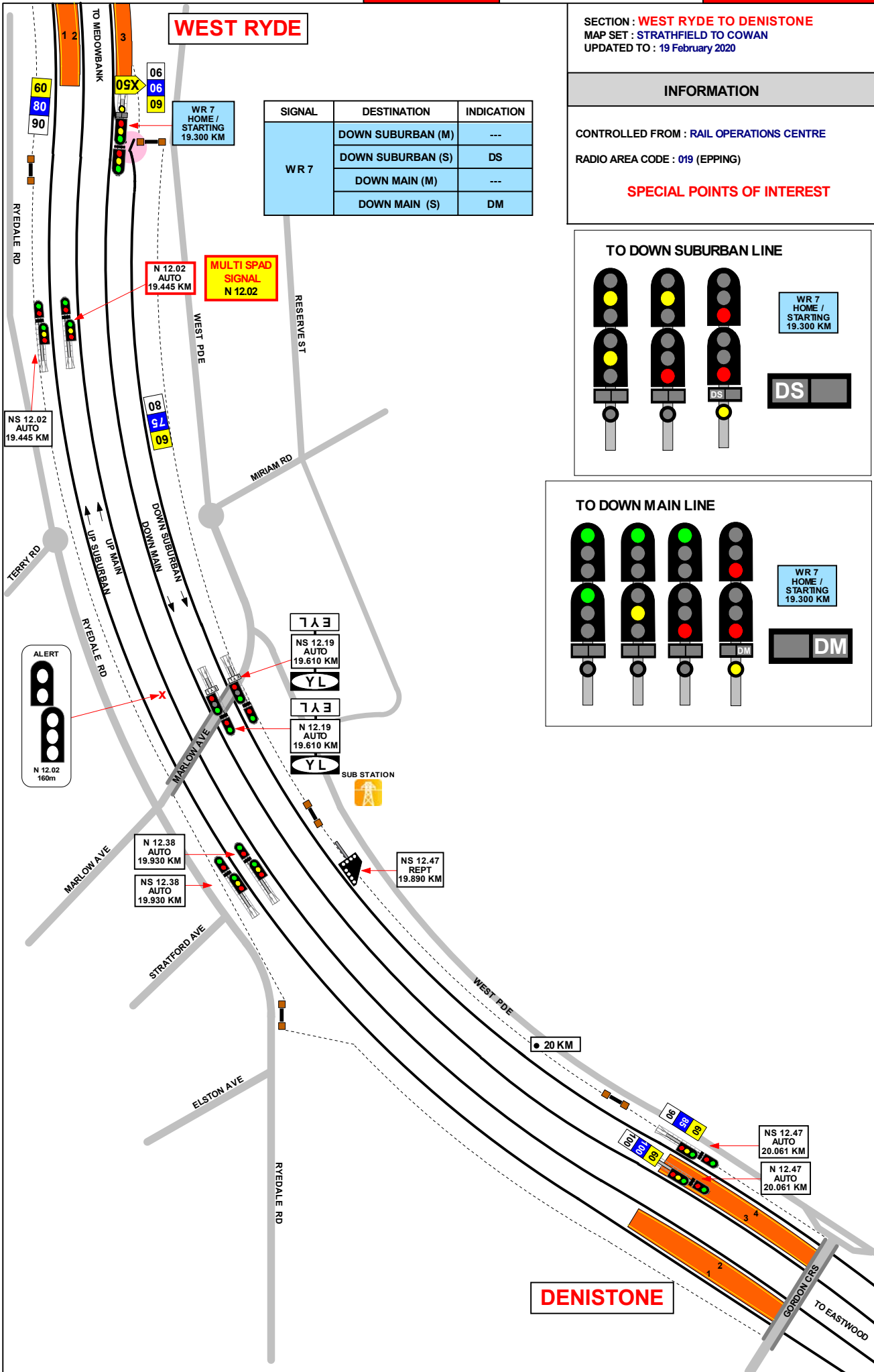
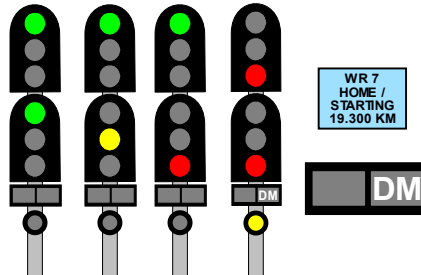
SPECIAL POINTS OF INTEREST

SIGNAL	DESTINATION	INDICATION
WR 7	DOWN SUBURBAN (M)	---
	DOWN SUBURBAN (S)	DS
	DOWN MAIN (M)	---
	DOWN MAIN (S)	DM

TO DOWN SUBURBAN LINE



TO DOWN MAIN LINE



DENISTONE

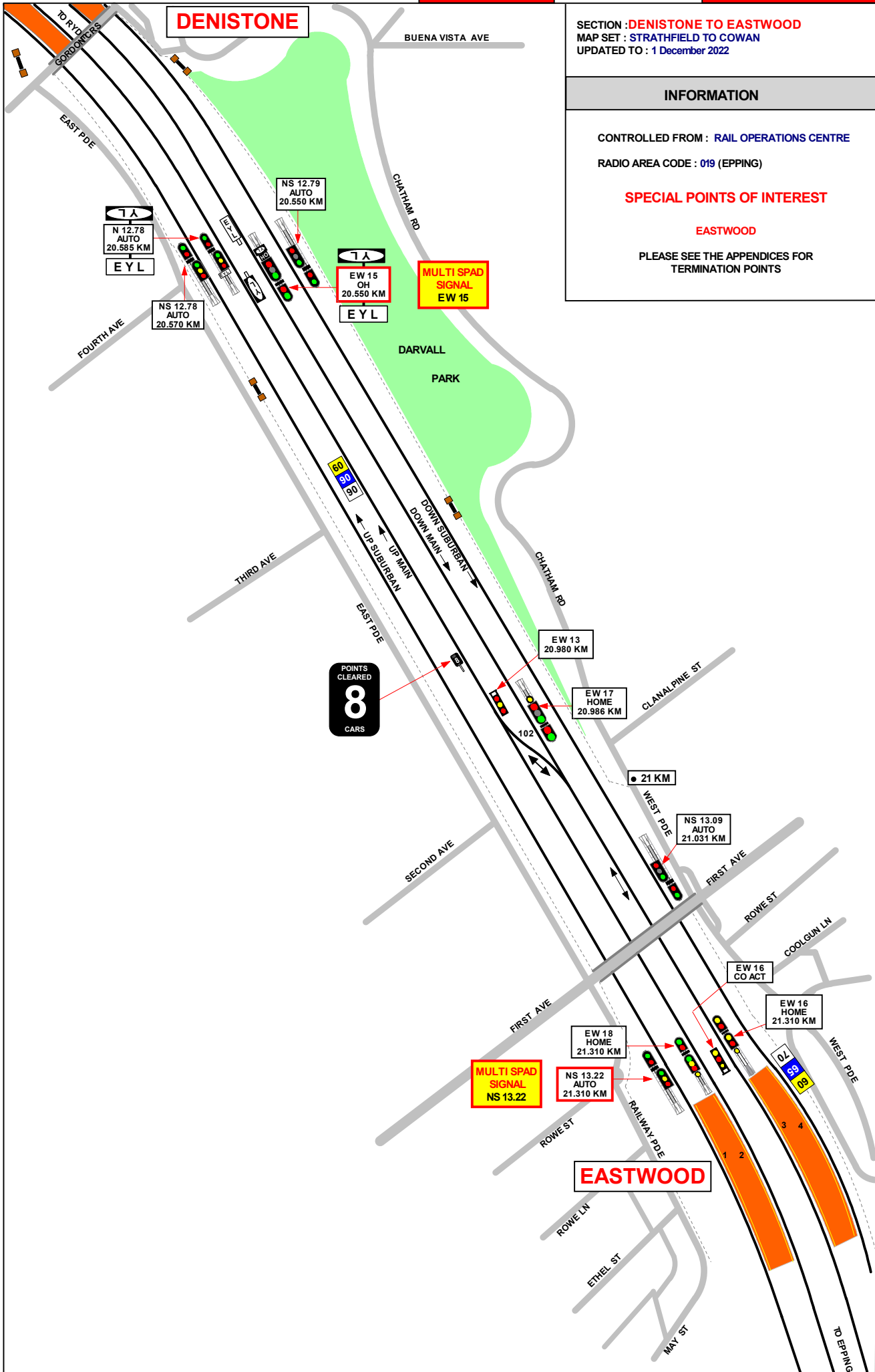
SECTION : DENISTONE TO EASTWOOD
MAP SET : STRATHFIELD TO COWAN
UPDATED TO : 1 December 2022

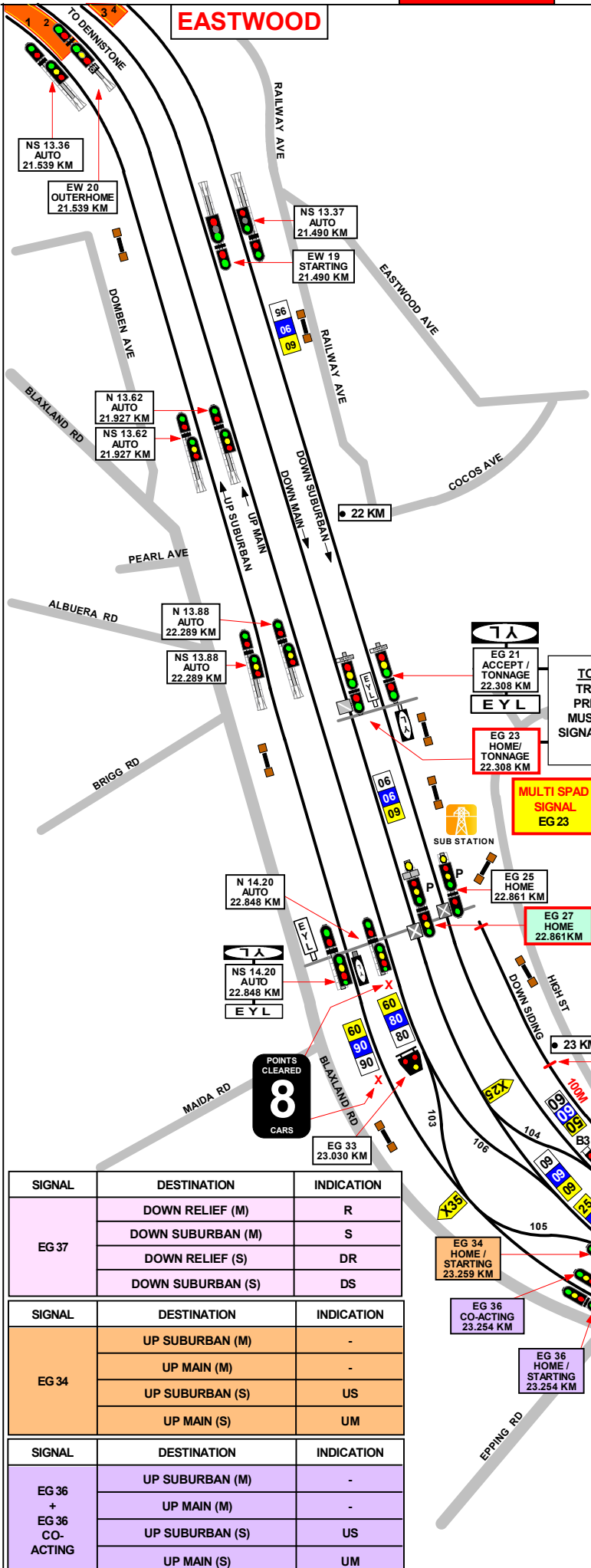
INFORMATION

CONTROLLED FROM : RAIL OPERATIONS CENTRE
RADIO AREA CODE : 019 (EPPING)

SPECIAL POINTS OF INTEREST

EASTWOOD
PLEASE SEE THE APPENDICES FOR
TERMINATION POINTS





SECTION : EASTWOOD TO EPPING
 MAP SET : STRATHFIELD TO COWAN
 UPDATED TO : 1 December 2022

INFORMATION

CONTROLLED FROM : RAIL OPERATIONS CENTRE
 RADIO AREA CODE : 019 (EPPING)

SPECIAL POINTS OF INTEREST
 EPPING

OWING TO THE SHARP TURNOUTS, FREIGHT TRAINS MUST NOT TRAVEL VIA No. 105 POINTS IN THE REVERSE POSITION.

EASTWOOD
 EPPING

PLEASE SEE THE APPENDICES FOR TERMINATION POINTS

SIGNAL	DESTINATION	INDICATION
EG 27	DOWN SUBURBAN (M)	-
	DOWN MAIN (M)	-
	DOWN SUBURBAN (S)	DS
	DOWN MAIN (S)	DM

SIGNAL	DESTINATION	INDICATION
EG 39	DOWN MAIN (M)	-
	DOWN MAIN (S)	DM
	UP MAIN (S)	UM
	TURNBACK SIDING (S)	TS

SIGNAL	DESTINATION	INDICATION
EG 41	UP MAIN (M)	---
	UP MAIN (S)	UM
	TURNBACK SIDING (S)	TS

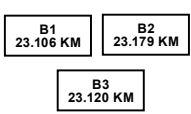
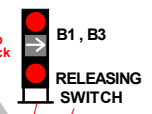
SIGNAL	DESTINATION	INDICATION
EG 37	DOWN RELIEF (M)	R
	DOWN SUBURBAN (M)	S
	DOWN RELIEF (S)	DR
	DOWN SUBURBAN (S)	DS

SIGNAL	DESTINATION	INDICATION
EG 34	UP SUBURBAN (M)	-
	UP MAIN (M)	-
	UP SUBURBAN (S)	US
	UP MAIN (S)	UM

SIGNAL	DESTINATION	INDICATION
EG 36 + EG 36 CO-ACTING	UP SUBURBAN (M)	-
	UP MAIN (M)	-
	UP SUBURBAN (S)	US
	UP MAIN (S)	UM

TONNAGE SIGNAL
 TRAINS OVER THE PRESCRIBED LOAD MUST NOT PASS THIS SIGNAL UNTIL SHOWING FULL CLEAR

MULTI SPAD SIGNAL
 EG 27



GRADIENT

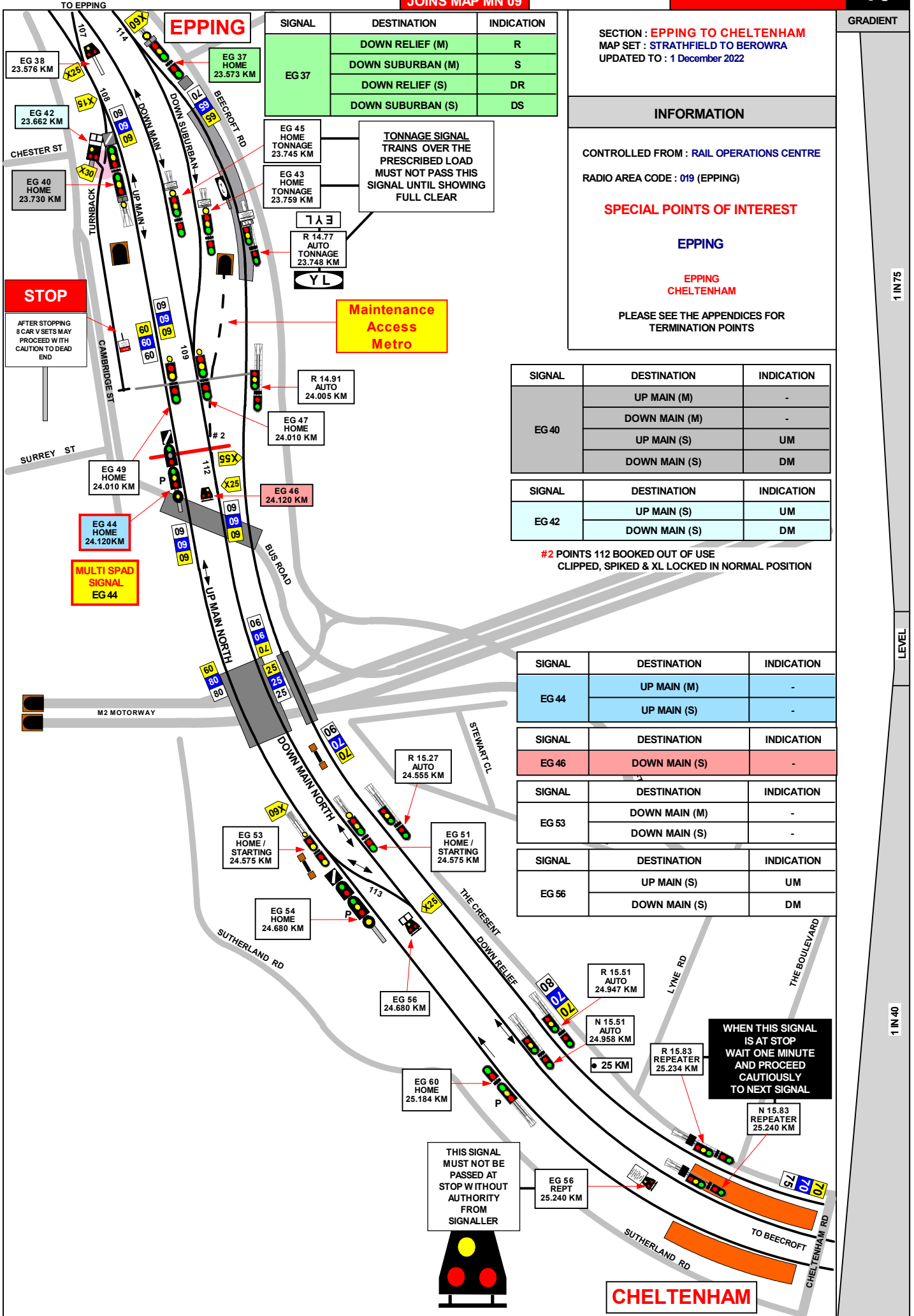
LEVEL

1 IN 75

1 IN 55

1 IN 44

1 IN 75



SIGNAL	DESTINATION	INDICATION
EG 37	DOWN RELIEF (M)	R
	DOWN SUBURBAN (M)	S
	DOWN RELIEF (S)	DR
	DOWN SUBURBAN (S)	DS

EG 45 HOME TONNAGE 23.745 KM
 EG 43 HOME TONNAGE 23.759 KM
 R 14.77 AUTO TONNAGE 23.748 KM
 YL

TONNAGE SIGNAL TRAINS OVER THE PRESCRIBED LOAD MUST NOT PASS THIS SIGNAL UNTIL SHOWING FULL CLEAR

Maintenance Access Metro

SECTION : EPPING TO CHELTENHAM
 MAP SET : STRATHFIELD TO BEROWRA
 UPDATED TO : 1 December 2022

INFORMATION

CONTROLLED FROM : RAIL OPERATIONS CENTRE
 RADIO AREA CODE : 019 (EPPING)

SPECIAL POINTS OF INTEREST

EPPING
 EPPING CHELTENHAM
 PLEASE SEE THE APPENDICES FOR TERMINATION POINTS

SIGNAL	DESTINATION	INDICATION
EG 40	UP MAIN (M)	-
	DOWN MAIN (M)	-
	UP MAIN (S)	UM
	DOWN MAIN (S)	DM

SIGNAL	DESTINATION	INDICATION
EG 42	UP MAIN (S)	UM
	DOWN MAIN (S)	DM

#2 POINTS 112 BOOKED OUT OF USE
 CLIPPED, SPIKED & XL LOCKED IN NORMAL POSITION

SIGNAL	DESTINATION	INDICATION
EG 44	UP MAIN (M)	-
	UP MAIN (S)	-

SIGNAL	DESTINATION	INDICATION
EG 46	DOWN MAIN (S)	-

SIGNAL	DESTINATION	INDICATION
EG 53	DOWN MAIN (M)	-
	DOWN MAIN (S)	-

SIGNAL	DESTINATION	INDICATION
EG 56	UP MAIN (S)	UM
	DOWN MAIN (S)	DM

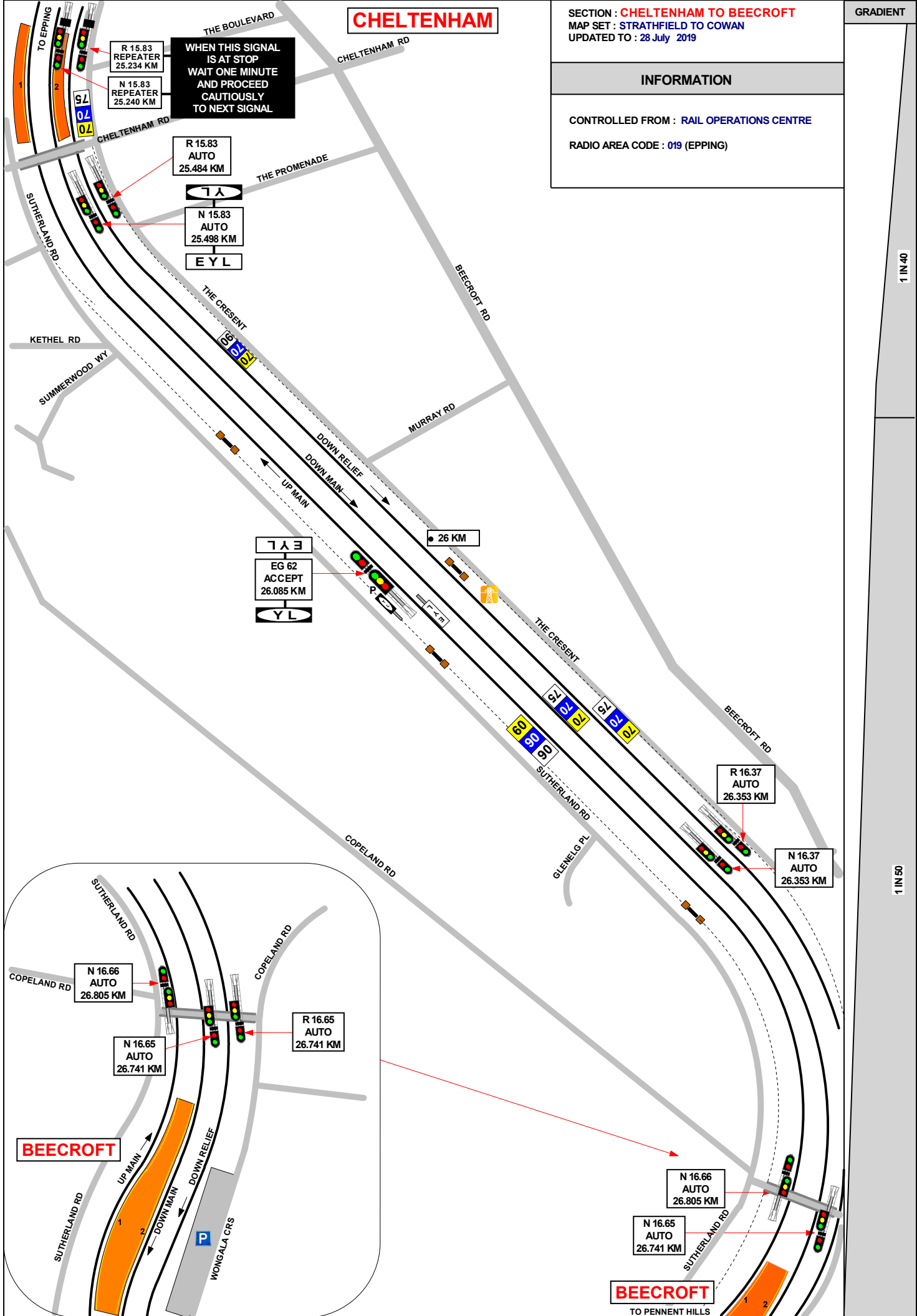
CHELTENHAM

SECTION : **CHELTENHAM TO BEECROFT**
MAP SET : **STRATHFIELD TO COWAN**
UPDATED TO : 28 July 2019

GRADIENT

INFORMATION

CONTROLLED FROM : **RAIL OPERATIONS CENTRE**
RADIO AREA CODE : **019 (EPPING)**



BEECROFT

BEECROFT

SECTION : **BEECROFT TO PENNANT HILLS**
MAP SET : **STRATHFIELD TO COWAN**
UPDATED TO : 14 June 2022

INFORMATION

CONTROLLED FROM : **RAIL OPERATIONS CENTRE**
RADIO AREA CODE : **019 (EPPING)**

GRADIENT

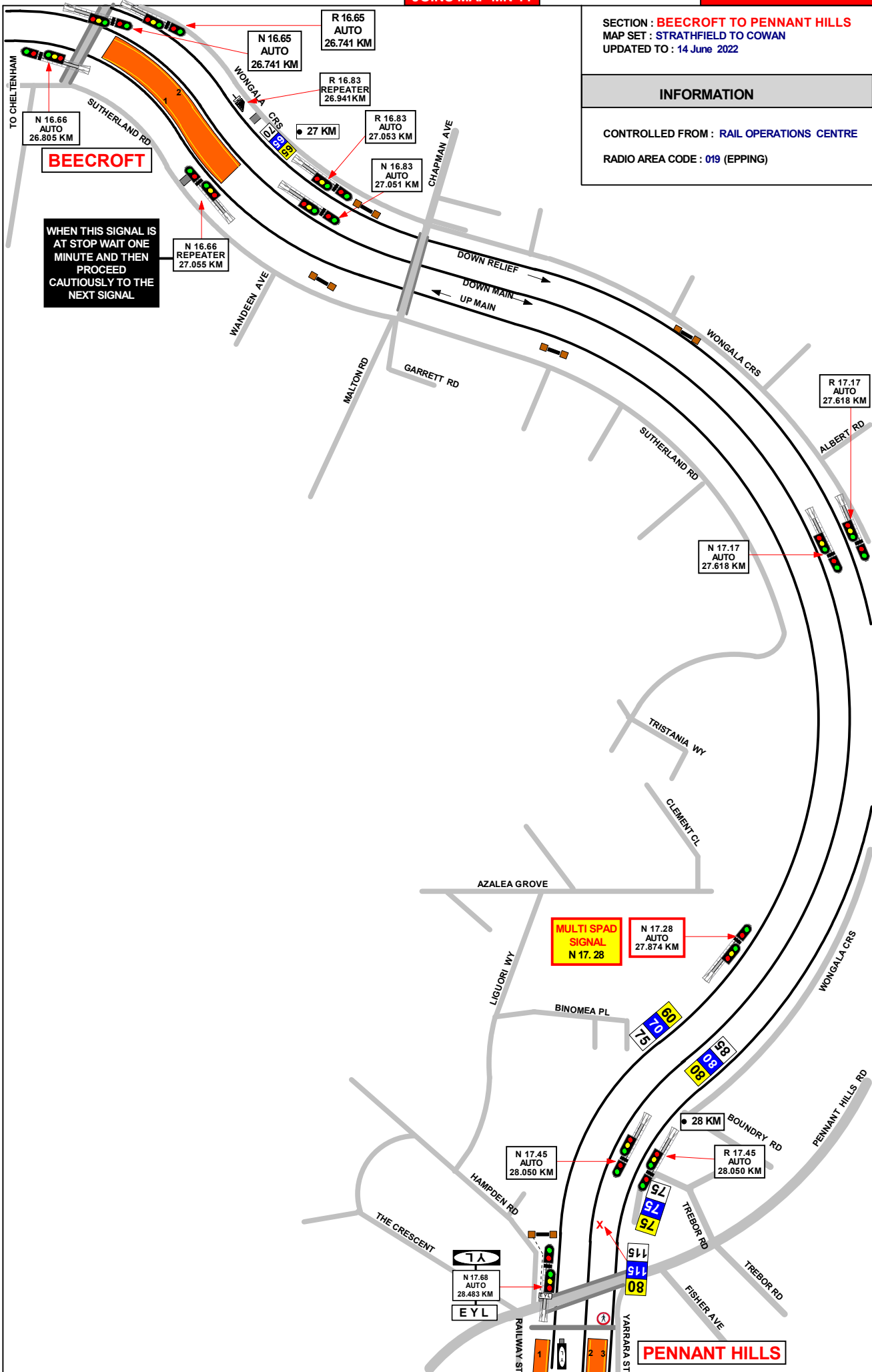
1 IN 50

1 IN 75

1 IN 55

1 IN 44

LEVEL



WHEN THIS SIGNAL IS AT STOP WAIT ONE MINUTE AND THEN PROCEED CAUTIOUSLY TO THE NEXT SIGNAL

MULTI SPAD SIGNAL
N 17.28

SECTION : PENNANT HILLS TO THORNLEIGH
 MAP SET : STRATHFIELD TO COWAN
 UPDATED TO : 22 January 2024

GRADIENT

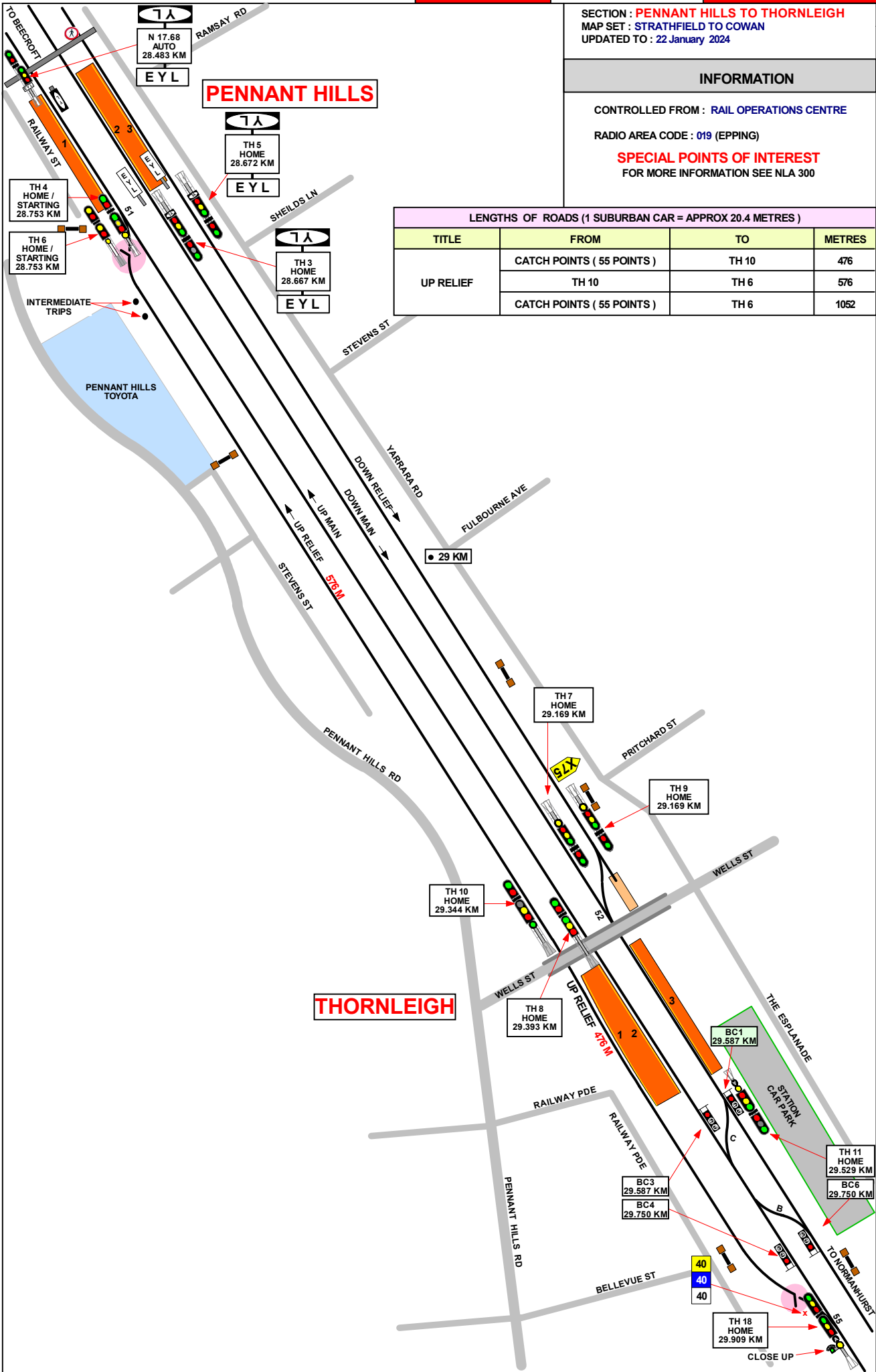
INFORMATION

CONTROLLED FROM : RAIL OPERATIONS CENTRE
 RADIO AREA CODE : 019 (EPPING)

SPECIAL POINTS OF INTEREST
 FOR MORE INFORMATION SEE NLA 300

LENGTHS OF ROADS (1 SUBURBAN CAR = APPROX 20.4 METRES)

TITLE	FROM	TO	METRES
UP RELIEF	CATCH POINTS (55 POINTS)	TH 10	476
		TH 6	576
	CATCH POINTS (55 POINTS)	TH 6	1052



1 IN 44

LEVEL

1 IN 220

1 IN 163

1 IN 200

LEVEL

1 IN 66

SECTION : **THORNLEIGH TO NORMANHURST**
 MAP SET : **STRATHFIELD TO COWAN**
 PAGE:
 UPDATED TO : 22 January 2024

INFORMATION

CONTROLLED FROM : **RAIL OPERATIONS CENTRE**
 RADIO AREA CODE : **019 (EPPING)**
017 (HORNSBY)

SPECIAL POINTS OF INTEREST
 FOR MORE INFORMATION SEE NLA 300

THORNLEIGH

GRADIENT

1 IN 200

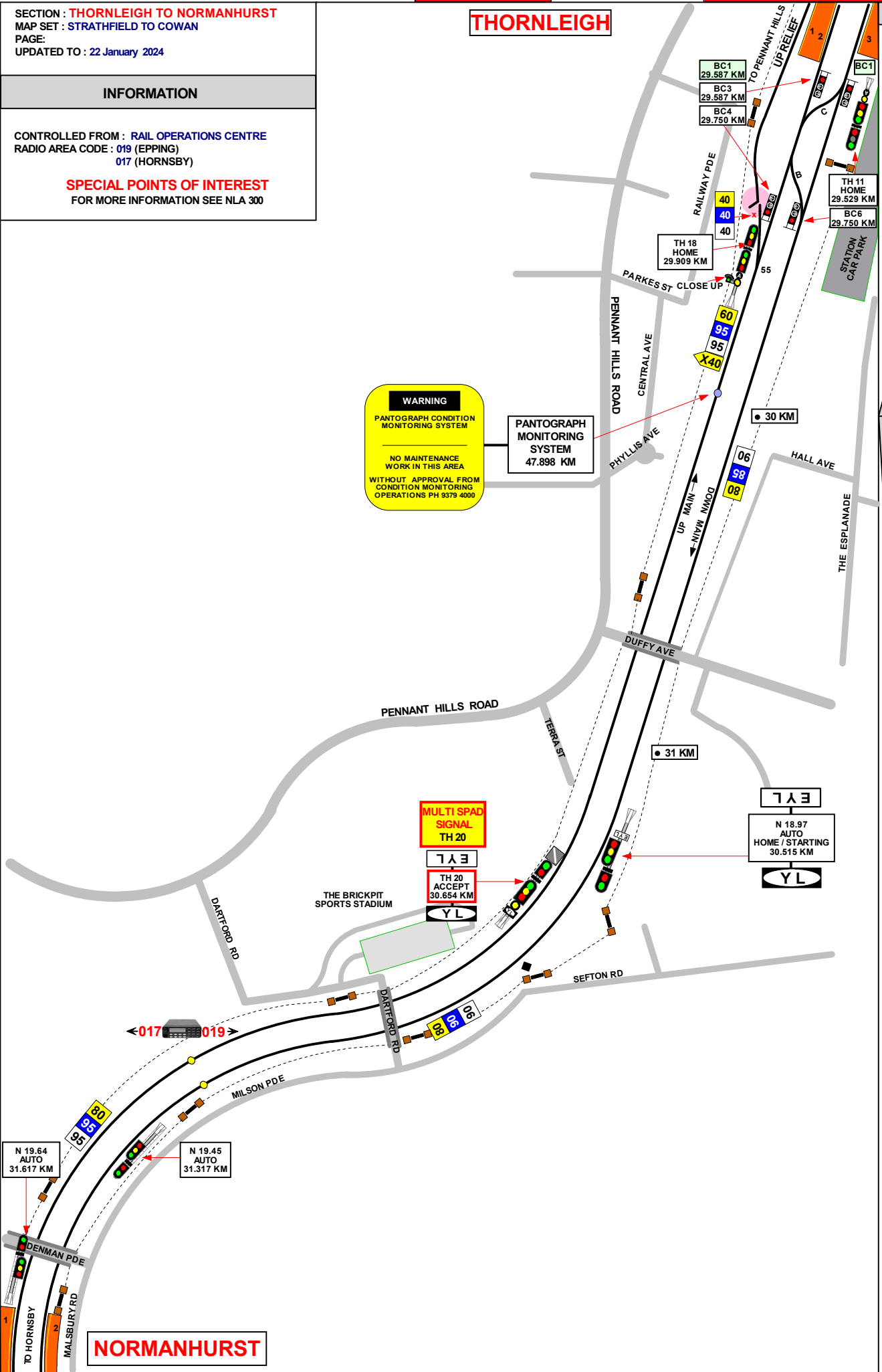
LEVEL

1 IN 66

1 IN 50

1 IN 75

1 IN 132



NORMANHURST

SECTION : **NORMANHURST TO HORNSBY**
 MAP SET : CENTRAL TO HORNSBY VIA SHORE
 PAGE: 1 OF 6
 UPDATED TO : 26 March 2021

GRADIENT

NORMANHURST

**TONNAGE SIGNAL
 TRAINS OF OVER
 PRESCRIBED LOAD TO
 WAIT UNTIL SIGNAL IS
 AT FULL CLEAR**

INFORMATION

CONTROLLED FROM : **RAIL OPERATIONS CENTRE**
 RADIO AREA CODE : 019 (EPPING)
 017 (HORNSBY)

SIGNAL	DESTINATION	INDICATION
HY 17	DOWN RELIEF (M)	R
	DOWN RELIEF (S)	DR
	DOWN MAIN (M)	M
	DOWN MAIN (S)	DM

SIGNAL	DESTINATION	INDICATION
HY 25	DOWN MAIN (M)	-
	DOWN MAIN (S)	4
	UP MAIN (M)	3
	UP MAIN (S)	3
	DOWN SHORE (M)	2
	DOWN SHORE (S)	2
	UP SHORE (M)	1
UP SHORE (S)	1	

MULTI SPAD SIGNAL
HY 17

MULTI SPAD SIGNAL
HY 25

MULTI SPAD SIGNAL
HY 31

MULTI SPAD SIGNAL
HY 35

SIGNAL	DESTINATION	INDICATION
HY 21	DOWN MAIN (M)	-
HY 27	DOWN MAIN (S)	4
	UP MAIN (S)	3
	DOWN SHORE (S)	2
	UP SHORE (S)	1

WAITARA

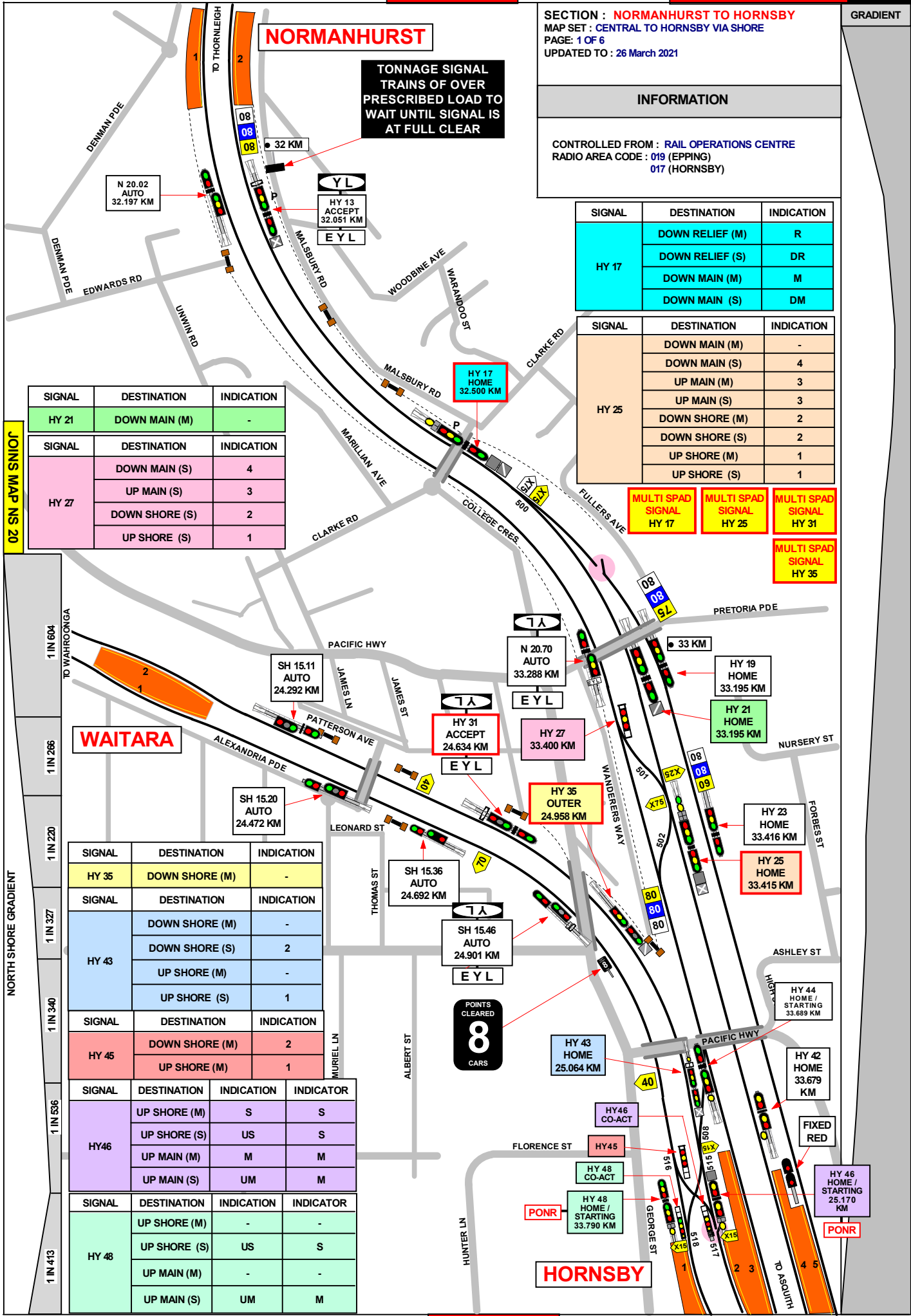
SIGNAL	DESTINATION	INDICATION
HY 35	DOWN SHORE (M)	-
HY 43	DOWN SHORE (M)	-
	DOWN SHORE (S)	2
	UP SHORE (M)	-
	UP SHORE (S)	1
HY 45	DOWN SHORE (M)	2
	UP SHORE (M)	1

SIGNAL	DESTINATION	INDICATION	INDICATOR
HY 46	UP SHORE (M)	S	S
	UP SHORE (S)	US	S
	UP MAIN (M)	M	M
	UP MAIN (S)	UM	M
HY 48	UP SHORE (M)	-	-
	UP SHORE (S)	US	S
	UP MAIN (M)	-	-
	UP MAIN (S)	UM	M

JOINS MAP NS 20

NORTH SHORE GRADIENT

1 IN 604 TO WAHROONGA
 1 IN 266
 1 IN 220
 1 IN 327
 1 IN 340
 1 IN 536
 1 IN 413



SECTION : **HORNSBY**
 MAP SET : **STRATHFIELD TO COWAN**
 PAGE : 2 OF 6
 UPDATED TO : 28 July 2019

INFORMATION

CONTROLLED FROM : **RAIL OPERATIONS CENTRE**
 RADIO AREA CODE : **017 (HORNSBY)**

TERMINATING TRAINS DOWN MAIN (UNDER NORMAL CONDITIONS)

FROM	TERMINATE AT	THEN GO TO
DOWN MAIN TRAINS	No. 4 PLATFORM	RETURN TO UP MAIN VIA No. 501 POINTS OR SHUNT FORWARD TO EITHER ● TURNBACK 1 ● DOWN MAIN ● UP MAIN ● UP SHORE ● No. 1 UP SIDING ● INWARDS CAR SHED ROAD OR ● OUTWARDS CAR SHED ROAD RETURN TO ANY PLATFORM FOR THE UP MAIN, OR PLATFORMS No. 1 AND 2 FOR UP SHORE SERVICES
	No. 3 PLATFORM	RETURN TO UP MAIN OR SHUNT TO EITHER ● TURNBACK 1 ● DOWN MAIN ● UP MAIN ● UP SHORE ● No. 1 UP SIDING ● INWARDS CAR SHED ROAD OR ● OUTWARDS CAR SHED ROAD RETURN TO ANY PLATFORM FOR THE UP MAIN, OR PLATFORMS No. 1 AND 2 FOR UP SHORE SERVICES
	No. 2 PLATFORM	RETURN TO UP MAIN VIA No. 508 POINTS, RETURN TO UP SHORE VIA No. 516 POINTS OR SHUNT FORWARD TO EITHER ● TURNBACK 1 ● DOWN MAIN ● UP MAIN ● UP SHORE ● No. 1-7 UP SIDINGS ● INWARDS CAR SHED ROAD ● OUTWARDS CAR SHED ROAD RETURN TO ANY PLATFORM FOR THE UP MAIN OR PLATFORMS No. 1 AND 2 FOR UP SHORE SERVICES note: FROM No. 2-7 UP SIDINGS YOU CAN ONLY RETURN TO PLATFORMS No. 1 AND 2
	NO. 1 PLATFORM VIA No. 502, 508 AND 508 POINTS	RETURN TO UP MAIN VIA No. 515 AND 508 POINTS RETURN TO UP SHORE OR SHUNT FORWARD TO EITHER ● TURNBACK 1 ● DOWN MAIN ● UP MAIN ● UP SHORE ● No. 1-7 UP SIDINGS ● INWARDS CAR SHED ROAD OR ● OUTWARDS CAR SHED ROAD ● No. 2-7 UP SIDINGS RETURN TO ANY PLATFORM FOR THE UP MAIN, OR PLATFORMS No. 1 AND 2 FOR THE UP SHORE SERVICES note: FROM 2-7 UP SIDINGS YOU CAN ONLY RETURN TO PLATFORM No. 1 AND 2

TERMINATING TRAINS DOWN SHORE (UNDER NORMAL CONDITIONS)

FROM	TERMINATE AT	THEN GO TO
	No. 2 PLATFORM	RETURN TO UP MAIN VIA No. 508 POINTS, RETURN TO UP SHORE VIA No. 516 POINTS OR SHUNT FORWARD TO EITHER ● TURNBACK 1 ● DOWN MAIN ● UP MAIN ● UP SHORE ● No. 1-7 UP SIDINGS ● INWARDS CAR SHED ROAD ● OUTWARDS CAR SHED ROAD RETURN TO ANY PLATFORM FOR THE UP MAIN OR PLATFORMS No. 1 AND 2 FOR UP SHORE SERVICES note: FROM No. 2-7 UP SIDINGS YOU CAN ONLY RETURN TO PLATFORMS No. 1 AND 2
	NO. 1 PLATFORM VIA No. 502, 508 AND 508 POINTS	RETURN TO UP MAIN VIA No. 515 AND 508 POINTS RETURN TO UP SHORE OR SHUNT FORWARD TO EITHER ● TURNBACK 1 ● DOWN MAIN ● UP MAIN ● UP SHORE ● No. 1 UP SIDINGS ● INWARDS CAR SHED ROAD OR ● OUTWARDS CAR SHED ROAD ● No. 2-7 UP SIDINGS RETURN TO ANY PLATFORM FOR THE UP MAIN, OR PLATFORMS No. 1 AND 2 FOR THE UP SHORE SERVICES note: FROM 2-7 UP SIDINGS YOU CAN ONLY RETURN TO PLATFORM No. 1 AND 2

TERMINATING TRAINS UP MAIN (UNDER NORMAL CONDITIONS)

FROM	TERMINATE AT	THEN GO TO
UP MAIN TRAINS	No. 1 PLATFORM	RETURN TO DOWN MAIN LINE VIA Nos. 525, 523 & 541 OR No. 573 POINTS
	No. 2 PLATFORM	RETURN DOWN MAIN LINE VIA EITHER No. 522 & 521 OR No. 541 OR No. 573 POINTS note: TRAINS TERMINATING AT No.1 OR No. 2 PLATFORM MAY RETURN TO THE DOWN MAIN LINE VIA THE UP SHORE
	No. 3 PLATFORM	RETURN TO THE DOWN MAIN LINE VIA EITHER No. 521 POINTS OR No. 573 POINTS
	No. 4 PLATFORM	RETURN TO DOWN MAIN LINE OR VIA THE UP SHORE AND No. 573 POINTS

LENGTH OF ROADS (1 SUBURBAN CAR = 20.4 METRES)

TITLE	FROM	TO	METRES
ELECTRICAL ENGINEERING SIDING	CLEARANCE	BUFFER	106
TURNBACK 1	HY 70	HY 91	171
TURNBACK 1	HY 70	HY 99	404
UP SHORE	HY 105	HY 76	331.2
No. 1 UP SIDING	HY 78	BUFFER	166
No. 2 UP SIDING	HY 64	BUFFER	166
No. 3 UP SIDING	HY 66	BUFFER	180
No. 4 UP SIDING	HY 50	BUFFER	180
No. 5 UP SIDING	HY 52	BUFFER	180
No. 6 UP SIDING	HY 54	BUFFER	180
No. 7 UP SIDING	HY 56	BUFFER	180
DOWN RELIEF	CATCH POINTS	HY 51	1,000
DOWN RELIEF	CATCH POINTS	HY 85	1,326
DOWN RELIEF	CATCH POINTS	HY 99	1,605
DOWN RELIEF	CATCH POINTS	HY 135	2,002

PONR POINTS OF NO RETURN

SIGNAL No.	LOCATION	DESTINATIONS
HY 46	No. 2 PLATFORM SYDNEY END	TURN OUT FOR UP MAIN
HY 48	No. 1 PLATFORM SYDNEY END	TURN OUT FOR UP MAIN
HY 58	UP MAIN 34.250 KM	TURN OUT FOR NORTH SHORE
HY 99	No. 1 TURNBACK 34.605 KM	TURN OUT FOR MAINTENANCE CENTRE

HORNSBY

SECTION : HORNSBY
MAP SET : STRATHFIELD TO COWAN
PAGE : 3 OF 6
UPDATED TO : 5 February 2024

NLA 302 HORNSBY

HY 51 HOME 34.005 KM	HY 60 HOME 34.230 KM	HY 80 HOME 34.586 KM	HY 94 HOME 34.380 KM
HY 53 HOME 33.930 KM	HY 61 HOME 34.107 KM	HY 83 HOME 34.326 KM	HY 96 HOME 34.380 KM
HY 55 HOME 33.963 KM	HY 62 HOME 33.971 KM	HY 85 HOME 34.318 KM	HY 99 HOME 34.605 KM
HY 57 HOME 33.942 KM	HY 68 HOME 34.000 KM	HY 87 HOME 34.426 KM	HY 101 HOME 34.586 KM
HY 58 HOME 34.073 KM	HY 70 HOME 34.201 KM	HY 91 HOME 34.380 KM	HY 103 HOME 34.586 KM
HY 59 HOME 33.963 KM	HY 78 HOME 34.237 KM	HY 93 HOME 34.359 KM	HY 105 HOME 34.586 KM

**MULTI SPAD SIGNAL
HY 72**

**MULTI SPAD SIGNAL
HY 96**

PONR

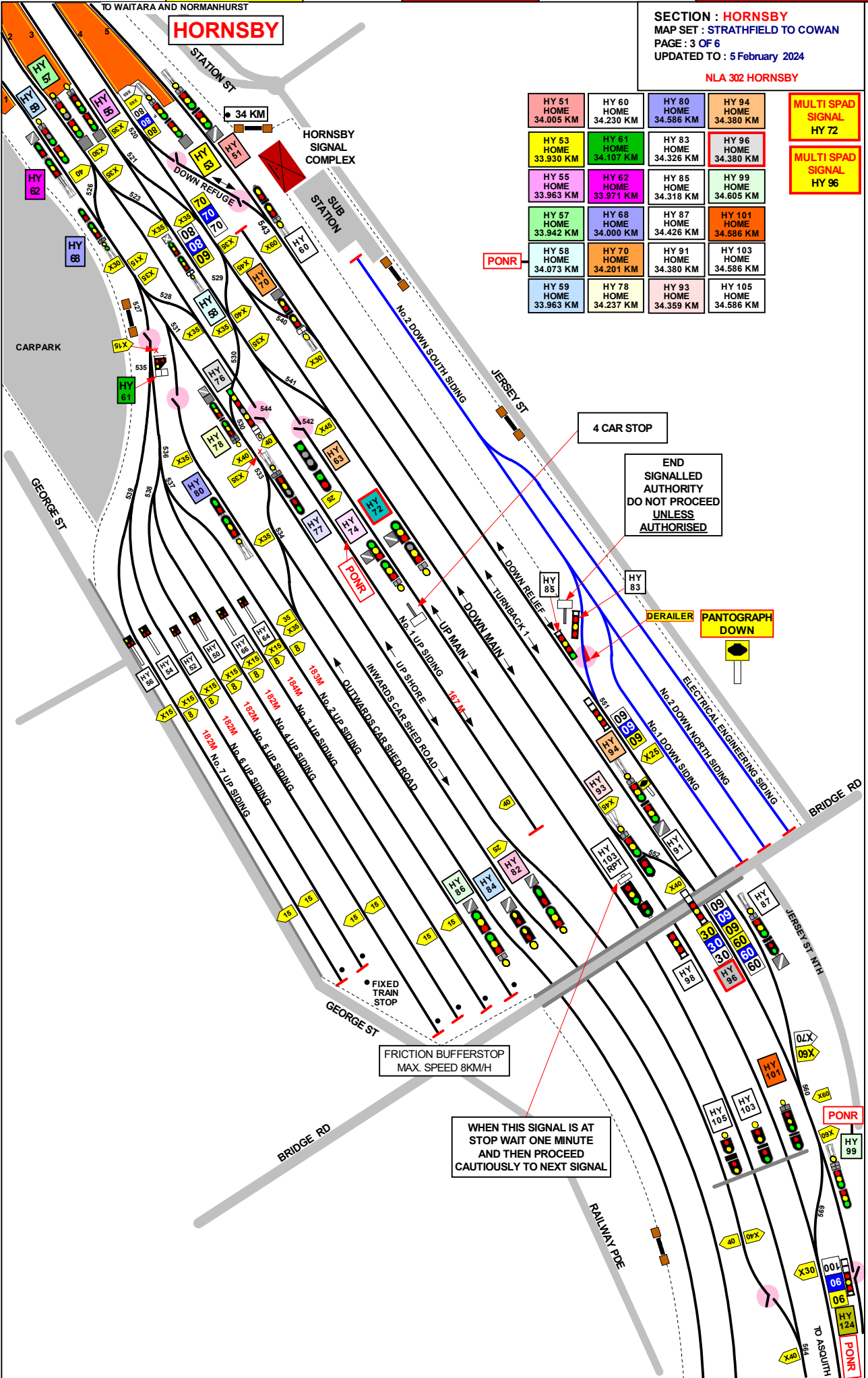
4 CAR STOP

END
SIGNALLED
AUTHORITY
DO NOT PROCEED
UNLESS
AUTHORISED

DERAILER
PANTOGRAPH
DOWN

FRICION BUFFERSTOP
MAX. SPEED 8KM/H

WHEN THIS SIGNAL IS AT
STOP WAIT ONE MINUTE
AND THEN PROCEED
CAUTIOUSLY TO NEXT SIGNAL



1 IN 413

1 IN 725

1 IN 470

1 IN 1000

1 IN 400

SECTION : **HORNSBY YARD**
 PAGE: 4 OF 6
 UPDATED TO : 23 June 2020

INFORMATION

HORNSBY YARD

THE HORNSBY INTERLOCKING CONSISTS OF THE AREA BOUNDED
 DOWN MAIN ACCEPT SIGNAL No. **HY 21**
 DOWN SHORE ACCEPT SIGNAL No. **HY 31**
 UP MAIN ACCEPT SIGNAL No. **HY 136**

YARD WORKING IS IN OPERATION WITHIN THE
 HORNSBY INTERLOCKING AND ALL TRAIN MOVEMENTS ARE
 UNDER THE CONTROL OF THE SIGNALLER AT HORNSBY

COLOURED LIGHTS INDICATOR SIGNALS ARE PROVIDED
 WHERE VISIBILITY OF RUNNING SIGNALS IS OBSTRUCTED AS
 FOLLOWS SIGNAL **HY 46** THE INDICATORS ALSO HAS A ROUTE
 INDICATOR ATTACHED TO IT, A LISTING OF
 INDICATIONS CAN BE FOUND IN THE TABLES BELOW

SIGNAL	DESTINATION	INDICATION
HY 80	UP SHORE (M)	-
	UP SHORE (S)	-

SIGNAL	DESTINATION	INDICATION
HY 82	UP SHORE (M)	-
	UP SHORE (S)	-

SIGNAL	DESTINATION	INDICATION
HY 84	UP SHORE (M)	-
	UP SHORE (S)	-

SIGNAL	DESTINATION	INDICATION
HY 86	OUTWARDS CAR SHED (M)	-
	OUTWARDS CAR SHED	OC
	UP SHORE (M)	-
	UP SHORE (S)	US

SIGNAL	DESTINATION	INDICATION
HY 93	TURNBACK 1 (S)	T1
	DOWN MAIN (M)	-
	DOWN MAIN (S)	DM

SIGNAL	DESTINATION	INDICATION
HY 94	DOWN RELIEF (M)	DR
	DOWN SIDING (S)	DS

SIGNAL	DESTINATION	INDICATION
HY 96	DOWN MAIN (S)	DM
	TURNBACK 1 (S)	T1

SIGNAL	DESTINATION	INDICATION
HY 50	UP SHORE (S)	-
HY 52	UP SHORE (S)	-
HY 54	UP SHORE (S)	-
HY 56	UP SHORE (S)	-
HY 64	UP SHORE (S)	-
HY 66	UP SHORE (S)	-

SIGNAL	DESTINATION	INDICATION
HY 51	DOWN RELIEF (M)	-
	DOWN RELIEF (S)	-

SIGNAL	DESTINATION	INDICATION
HY 53	DOWN RELIEF (M)	R
	DOWN RELIEF (S)	DR
	TURNBACK 1 (M)	T
	TURNBACK 1 (S)	T1
	DOWN MAIN (M)	-
	DOWN MAIN (S)	DM
	UP SHORE (M)	S
	UP SHORE (S)	US

SIGNAL	DESTINATION	INDICATION
HY 55	TURNBACK 1 (M)	T
	TURNBACK 1 (S)	T1
	DOWN MAIN (M)	D
	DOWN MAIN (S)	DM
	UP MAIN (M)	-
	UP MAIN (S)	UM
	UP SHORE (M)	S
	UP SHORE (S)	US

SIGNAL	DESTINATION	INDICATION
HY 57	DOWN MAIN (M)	D
	DOWN MAIN (S)	DM
	UP MAIN (M)	U
	UP MAIN (S)	UM
	DOWN SHORE (M)	-
	DOWN SHORE (S)	DS
	UP SHORE (M)	S
	UP SHORE (S)	US

SIGNAL	DESTINATION	INDICATION
HY 58	DOWN SHORE (M)	-
	DOWN SHORE (S)	2
	UP MAIN (M)	-
	UP MAIN (S)	3

SIGNAL	DESTINATION	INDICATION
HY 59	DOWN SHORE (M)	-
	DOWN SHORE (S)	DS
	UP SHORE (M)	-
	UP SHORE (S)	US
	UP SIDING (S)	SG

SIGNAL	DESTINATION	INDICATION
HY 60	DOWN MAIN (M)	-
	DOWN MAIN (S)	4
	DOWN RELIEF (S)	5

SIGNAL	DESTINATION	INDICATION
HY 61	No.2 UP SIDING (S)	U2
	No.3 UP SIDING (S)	U3
	No.4 UP SIDING (S)	U4
	No.5 UP SIDING (S)	U5
	No.6 UP SIDING (S)	U6
	No.7 UP SIDING (S)	U7

SIGNAL	DESTINATION	INDICATION
HY 68	UP SHORE (M)	-
	UP SHORE (S)	US
	DOWN SHORE (S)	2

SIGNAL	DESTINATION	INDICATION
HY 70	UP MAIN (M)	3
	UP MAIN (S)	3
	DOWN MAIN (M)	4
	DOWN MAIN (S)	4

SIGNAL	DESTINATION	INDICATION
HY 72	UP MAIN (M)	-
	UP MAIN (S)	UM
	DOWN MAIN (M)	-
	DOWN MAIN (S)	4

SIGNAL	DESTINATION	INDICATION
HY 74	UP MAIN (M)	-
	UP MAIN (S)	UM
	DOWN MAIN (M)	-
	DOWN MAIN (S)	4

SIGNAL	DESTINATION	INDICATION
HY 78	UP SHORE (M)	-
	UP SHORE (S)	US
	UP MAIN (M)	U
	UP MAIN (S)	UM
	DOWN MAIN (M)	4
	DOWN MAIN (S)	4

SECTION : HORNSBY
MAP SET : STRATHFIELD TO COWAN
PAGE : 5 OF 6
UPDATED TO : 3 October 2023

NLA 302 HORNSBY

MULTI SPAD
SIGNAL
3 FRB

END
SIGNALLED
AUTHORITY
DO NOT PROCEED
UNLESS
AUTHORISED

9 & 10 POINTS
RACOR LEVER

SHUNTERS
HUMPY

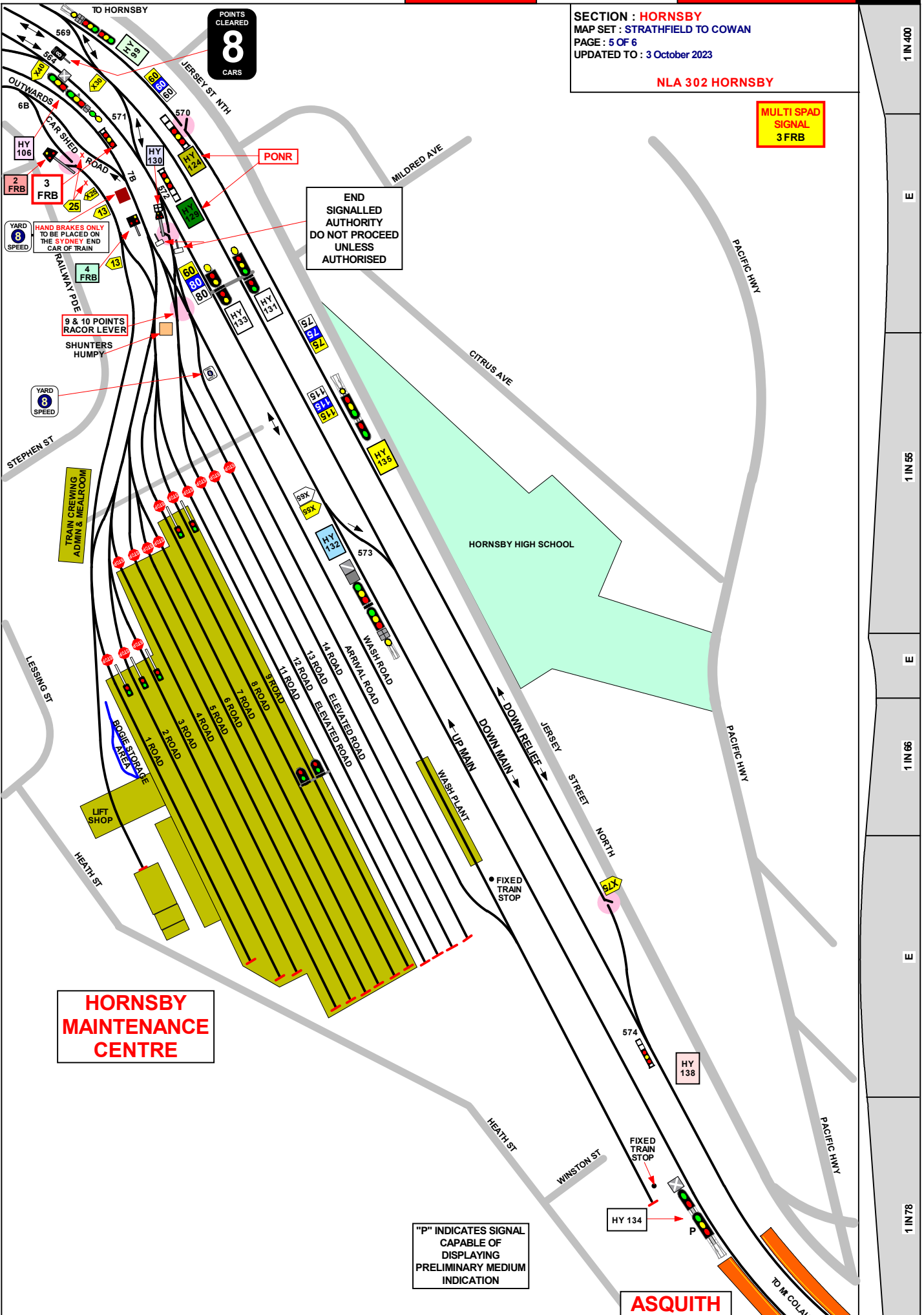
TRAIN CREWING
ADMIN & MEALROOM

**HORNSBY
MAINTENANCE
CENTRE**

"P" INDICATES SIGNAL
CAPABLE OF
DISPLAYING
PRELIMINARY MEDIUM
INDICATION

ASQUITH

POINTS
CLEARED
8
CARS



SECTION : HORNSBY
 PAGE : 6 OF 6
 UPDATED TO : 15 January 2018

SIGNAL	DESTINATION	INDICATION
HY 99	DOWN RELIEF (M)	-
	DOWN RELIEF (S)	DR
	DOWN MAIN (M)	-
	DOWN MAIN (S)	DM
	UP MAIN (S)	UM

SIGNAL	DESTINATION	INDICATION
HY 101	DOWN MAIN (M)	-
	DOWN MAIN (S)	DM
	UP MAIN (S)	UM

SIGNAL	DESTINATION	INDICATION
HY 106	UP SHORE (M)	-
	UP SHORE (S)	US
	UP MAIN (M)	-
	UP MAIN (S)	UM

SIGNAL	DESTINATION	INDICATION
HY 124	TURNBACK 1 (S)	T1
	DOWN RELIEF (S)	DR

SIGNAL	DESTINATION	INDICATION
HY 129	UP MAIN (S)	UM
	CAR SHEDS (S)	CS

SIGNAL	DESTINATION	INDICATION
HY 130	UP MAIN (S)	UM
	DOWN MAIN (S)	DM
	TURNBACK 1 (S)	T1
	DOWN RELIEF (S)	DR

SIGNAL	DESTINATION	INDICATION
HY 132	UP MAIN (M)	-
	UP MAIN (S)	UM
	DOWN MAIN (M)	D
	DOWN MAIN (S)	DM
	TURNBACK 1 (M)	T
	TURNBACK 1 (S)	T1
	DOWN RELIEF (M)	R
	DOWN RELIEF (S)	DR

SIGNAL	DESTINATION	INDICATION
HY 138	UP MAIN (S)	M
	-	-
	DOWN RELIEF(S)	R

SECTION : ASQUITH TO MT COLAH
MAP SET : STRATHFIELD TO COWAN
UPDATED TO : 25 September 2019

INFORMATION

CONTROLLED FROM : RAIL OPERATIONS CENTRE

RADIO AREA CODE : 017 (HORNSBY)

SPECIAL POINTS OF INTEREST

GRADIENT

1 IN 78

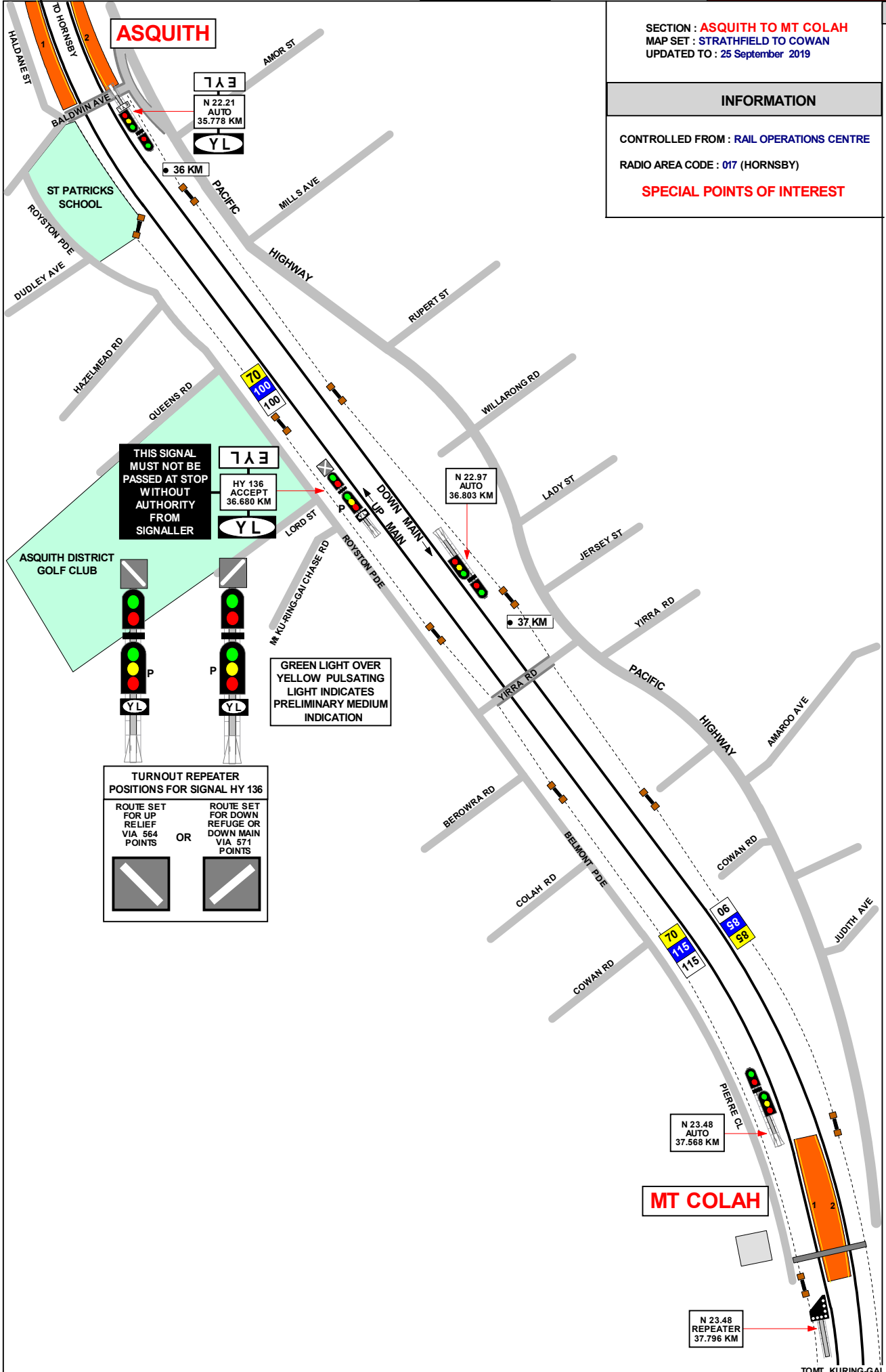
1 IN 64

LEVEL

1 IN 48

1 IN 65

LEVEL



ASQUITH

THIS SIGNAL MUST NOT BE PASSED AT STOP WITHOUT AUTHORITY FROM SIGNALLER

GREEN LIGHT OVER YELLOW PULSATING LIGHT INDICATES PRELIMINARY MEDIUM INDICATION

TURNOUT REPEATER POSITIONS FOR SIGNAL HY 136

ROUTE SET FOR UP RELIEF VIA 564 POINTS	OR	ROUTE SET FOR DOWN REFUGE OR DOWN MAIN VIA 571 POINTS

MT COLAH

TO HORNSBY

MT COLAH

SECTION : MT COLAH TO MT KURING- GAI
MAP SET : STRATHFIELD TO COWAN
UPDATED TO : 23 April 2020

GRADIENT

INFORMATION

CONTROLLED FROM : RAIL OPERATIONS CENTRE
RADIO AREA CODE : 017 (HORNSBY)

SPECIAL POINTS OF INTEREST

NLA 310 HORNSBY - GOSFORD
REFER TO NLA 310 FOR MORE INSTRUCTIONS

LEVEL

SIGNAL KEY SWITCH PROJECT
MOUNT KURING-GAI

1 IN 100

UP and DOWN BBTs, REPORT TO HOMEBSH
CONTROL CENTRE (HORNSBY NORTH PANEL)

1 IN 300

WARNING

WAYSIDE DETECTION SYSTEM
Mt KURING-GAI 39.658 kms

NO TRACK WORK IN AREA

WITHOUT APPROVAL FROM TRAIN MONITORING SYSTEMS UNIT
PHONE (02) 9739 4000

DOWN MAIN
WORKSITE LIMITS SIGNAL KEY SWITCH AT
N 25.21 SIGNAL TO B 1 SIGNAL

1 IN 40

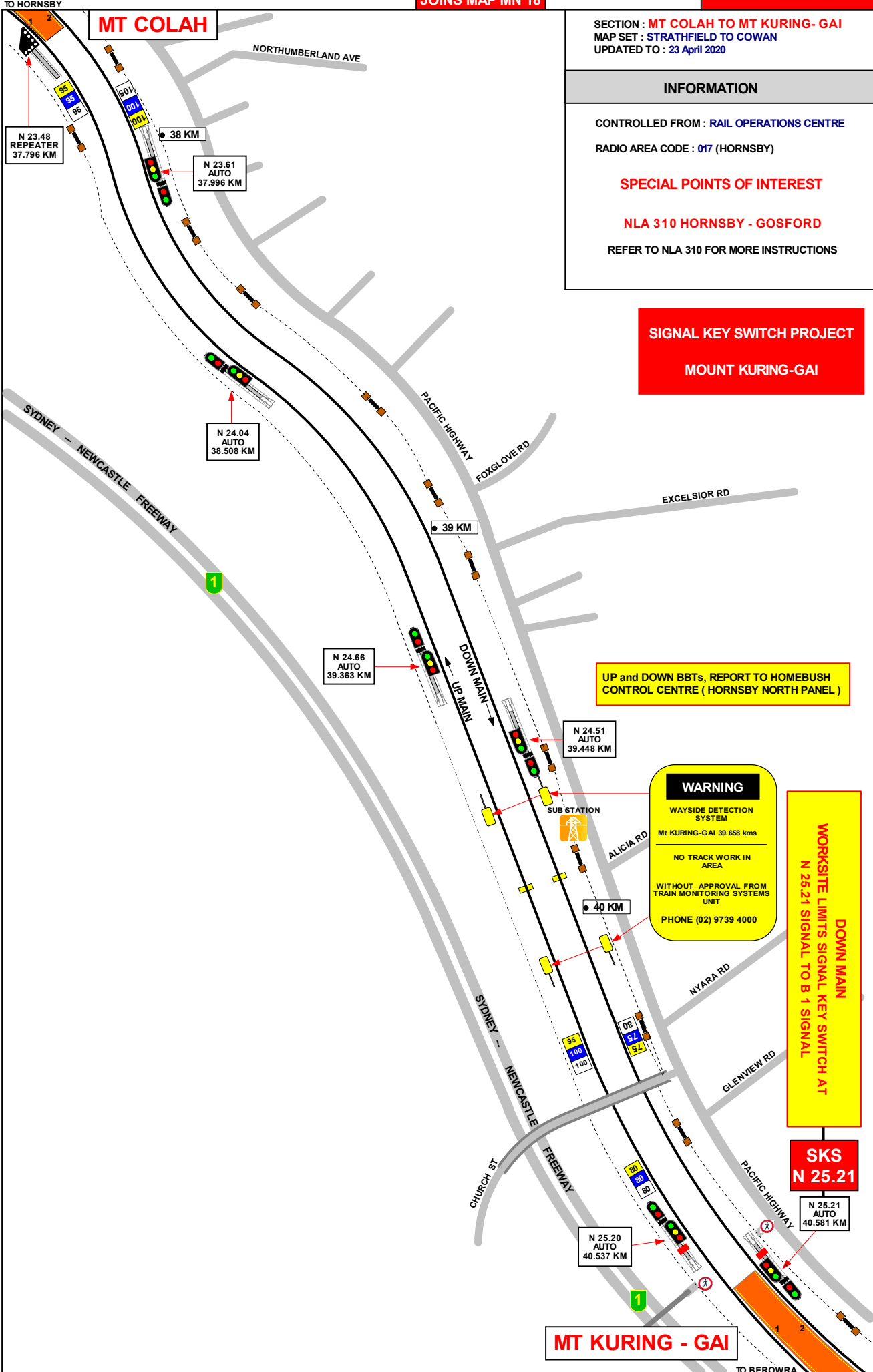
SKS
N 25.21

1 IN 275

MT KURING - GAI

1 IN 240

1 IN 220



MT KURING - GAI

SECTION : MT KURING- GAI TO BEROWRA
MAP SET : STRATHFIELD TO COWAN
UPDATED TO : 15 December 2023

GRADIENT

INFORMATION

CONTROLLED FROM : RAIL OPERATIONS CENTRE

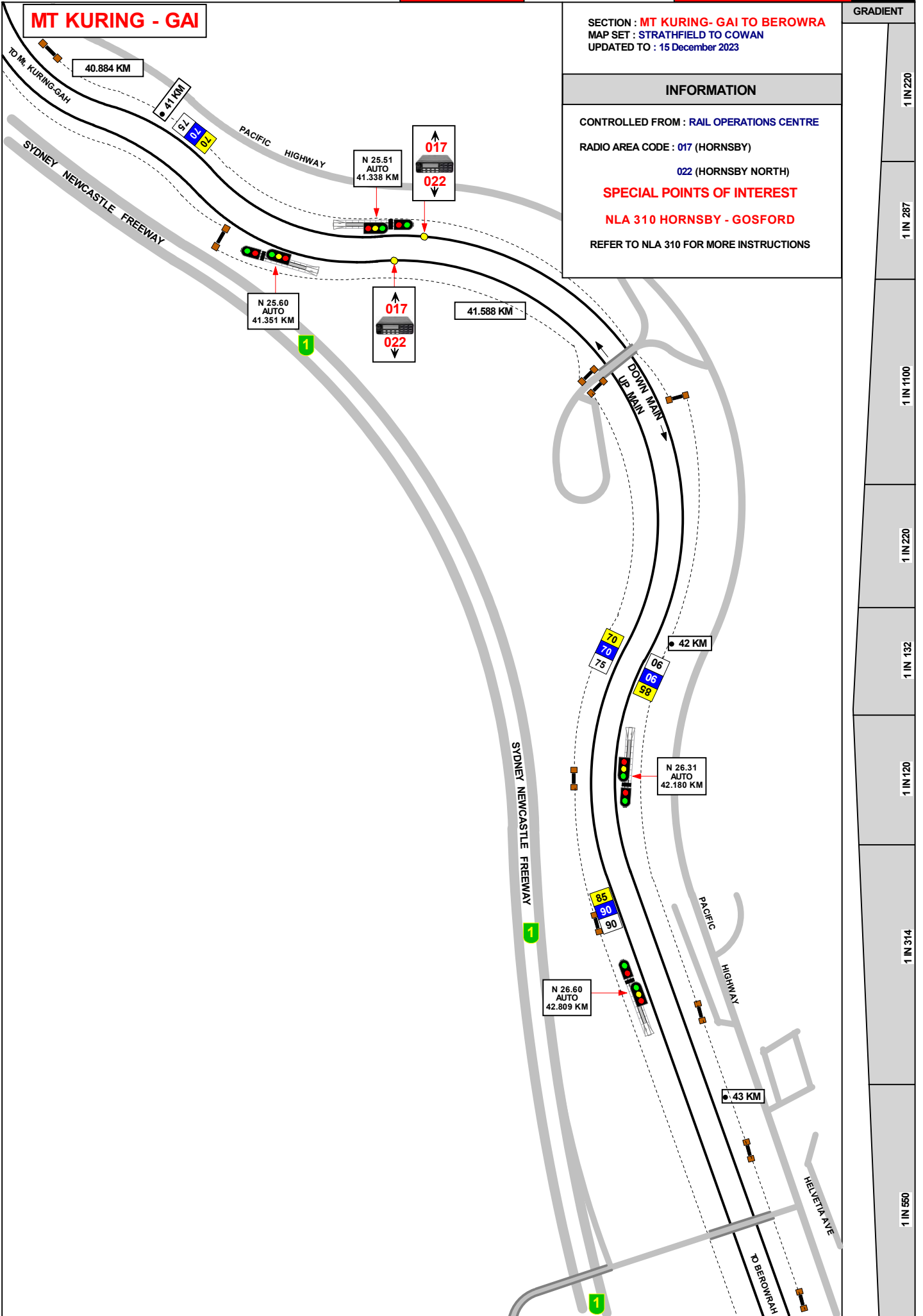
RADIO AREA CODE : 017 (HORNSBY)

022 (HORNSBY NORTH)

SPECIAL POINTS OF INTEREST

NLA 310 HORNSBY - GOSFORD

REFER TO NLA 310 FOR MORE INSTRUCTIONS



SECTION : MT KURING-GAI TO BEROWRA
 MAP SET : STRATHFIELD TO COWAN
 UPDATED TO : 15 December 2023

INFORMATION

CONTROLLED FROM : RAIL OPERATIONS CENTRE

RADIO AREA CODE : 017 (HORNSBY)

022 (HORNSBY NORTH)

SPECIAL POINTS OF INTEREST

BEROWRA

NLA 310 HORNSBY - GOSFORD

REFER TO NLA 310 FOR MORE INSTRUCTIONS

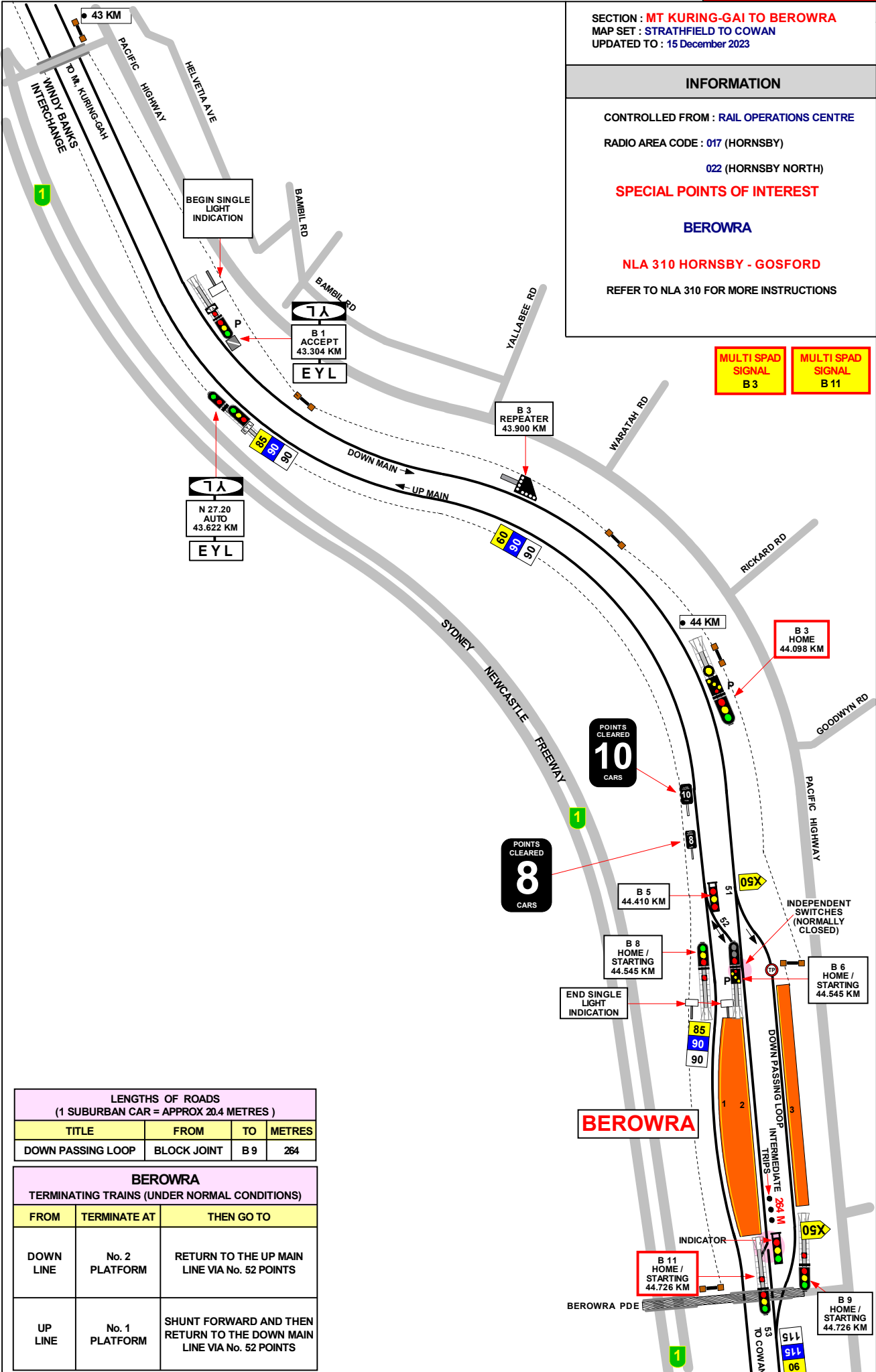
GRADIENT

1 IN 550

1 IN 142

1 IN 200

1 IN 134



LENGTHS OF ROADS (1 SUBURBAN CAR = APPROX 20.4 METRES)			
TITLE	FROM	TO	METRES
DOWN PASSING LOOP	BLOCK JOINT	B 9	264

BEROWRA TERMINATING TRAINS (UNDER NORMAL CONDITIONS)		
FROM	TERMINATE AT	THEN GO TO
DOWN LINE	No. 2 PLATFORM	RETURN TO THE UP MAIN LINE VIA No. 52 POINTS
UP LINE	No. 1 PLATFORM	SHUNT FORWARD AND THEN RETURN TO THE DOWN MAIN LINE VIA No. 52 POINTS