

**Engineering System Integrity
Electrical Network Safety Rules**

**Engineering Procedure
Electrical Distribution Unit**

One Method of Safe Working

**PR D 78102
Electrical Hazards and Warnings**

Version 2.0

Date in Force: 1 February 2022

Approved by: Associate Director
 Electrical Distribution Unit
 Engineering System Integrity

Authorised by: Engineering Technical
 Publications Manager
 System Integrity

Disclaimer

This document was prepared for use by persons in connection with works near or on/within the rail network electricity system operated by Sydney Trains. Sydney Trains makes no warranties, express or implied, that compliance with the contents of this document shall be sufficient to ensure safe systems or work or operation. It is the document user's sole responsibility to ensure that the copy of the document it is viewing is the current version of the document as in use by Sydney Trains. To the extent permitted by law, Sydney Trains excludes any and all liability for any loss or damage, however caused (including through negligence), which may be directly or indirectly suffered in connection with the use of this document.

Copyright

The information in this document is protected by copyright and no part of this document may be reproduced, altered, stored or transmitted by any person without the prior consent of Sydney Trains.

Document control

Version	Date	Author/ Prin. Eng.	Summary of change
1.0	29 July 2015	Wayne Halls	First issue as a Sydney Trains document, rebranded from previous RailCorp SMS-06-EN-0553 V1.3.
1.1	10 July 2018	Chris Leung	3 Yearly Review.
1.2	19 February 2019	Nick Loveday	Updated PR D 78102 "Approved by" to Associate Director Electrical Distribution Unit.
2.0	1 February 2022	ENSR Project Team	Reviewed as part of the ENSR Project. Incorporated section from SMS-06-GD-0268 V3.2.

Summary of changes from previous version

Summary of change	Section
Incorporated sections from SMS-06-GD-0268 V3.2 Working around Electrical Equipment: <ul style="list-style-type: none"> Section 4 Electrical hazards Section 6 Particular electrical hazards 	n/a
Updated reference documents	16

Table of Contents

1	Purpose and scope	5
2	Definitions	5
3	Background	5
3.1	Possible consequences of electrical incidents	5
3.2	Electric shocks and the human body	6
3.3	Electric Arcs	6
3.4	Explosion	7
4	Mitigation Measures against Electric Arcs, Electric Shocks and Explosions	7
5	Particular electrical hazards	8
5.1	Work activities and tools	8
5.1.1	Hazardous materials, tools and equipment	8
5.1.2	Metallic tapes	8
5.1.3	Clothing and Personal Items	9
5.1.4	Handling objects over 1m in length in the vicinity of electrical equipment	9
5.1.5	Flames near electrical equipment	10
5.2	Cranes, vehicles and plant	11
5.3	Activities altering ground level under aerial conductors	11
5.4	Fallen wires	12
5.5	Concealed cables	12
5.5.1	Concealed cables in building and structures	12
5.5.2	Underground cables and buried services	12
6	Traction system	14
6.1	Interfering with negative connections to rail	14
6.2	Disconnecting or removing sections of rail	14
6.3	Working around portable rail connecting equipment	14
6.4	1500 Volt DC Overhead Wiring structures or Equipment	15
7	Earthing system	16
7.1	Disconnected or broken earth connections	16
7.2	Substation earth grid voltages and transferred earth potentials	16
7.3	Earth grid and earth electrodes	16
7.4	Check to ensure no missing earthing connections before touching	17
8	Neutral, negative and earth circuits	18
9	Rectifier negative	18
10	Capacitors	18
11	Battery rooms	19
12	Current transformers	19
13	Work on or above and roof equipment of electric vehicles	20
13.1	Work on or above electric vehicles	20
13.2	Securing of damaged pantographs	20
13.3	Roof mounted capacitors	20

14	Precautions to be undertaken when lightning is imminent.....	21
15	'Danger Do Not Operate' tags (DANGER Tags)	22
16	Warning signs and protective measures.....	22
17	Reference documents.....	23

1 Purpose and scope

To provide general warnings applicable to electrical work near or on/within electrical equipment and to describe a number of more common electrical hazards which may be encountered by Sydney Trains personnel, contractors and the public.

Persons undertaking work where these hazards are present shall ensure the highest practicable level of risk control is applied.

This procedure should be read in conjunction with, and in addition to, the procedure *PR D 78700 Working around Electrical Equipment*.

NOTE

PR D 78700 provides guidance on the risk assessment and planning process in relation to electrical hazards.

2 Definitions

Refer to the **Electrical Safety Definitions** page available on the **RailSafe** site.

3 Background

3.1 Possible consequences of electrical incidents

Electrical incidents can result in:

- persons receiving an electric shock (possible cardiac arrest)
- persons burnt by hot gas, molten metal and receiving burns from electric current passing through the body
- persons receiving radiation burns
- persons suffering flash injury to the eyes
- explosion.

In each case the result may be fatal, either directly or due to secondary events such as a subsequent fall.

Every situation must be treated as potentially dangerous and only proceed when it is known that it is safe to do so and that the required safety procedures have been followed.

In the majority of situations, it is impossible to determine whether electrical equipment is live by observing it. Any investigation or test carried out by an untrained person is more likely to increase their exposure to the electrical hazard. Under no circumstances should person's not specifically authorised attempt to investigate or test electrical equipment. Refer to *PR D 78701 Personnel Certifications – Electrical*.

3.2 Electric shocks and the human body

The human body is a conductor of electricity, and severe injury or death may result if a conducting path that allows electric current to pass through the body is formed.

A conducting path can be formed by:

- touching or making contact with the exposed live electrical equipment with any portion of the body, whether intentionally or inadvertently, or
- bringing any portion of the body close enough to the exposed live electrical equipment for an arc to occur between the equipment and the body, or
- bringing close or touching the exposed electrical equipment with tools or materials that are not electrically insulated.

The danger of electric shock exists wherever a person could make contact between:

- live conductors, or
- a live conductor and earth, or
- 1500 Volt DC overhead wiring and rail, or
- different overhead wiring sections, or
- overhead wiring and earth, or
- overhead wiring structures and rail (or vehicles on rail).

In the event that a person receives an electric shock it is essential that appropriate first aid is provided without delay. Even if there are no immediate signs of injury the requirements of *D2013/80869 Electric Shock Protocol* must be complied with.

3.3 Electric Arcs

Serious injury can result from burns caused by electric arcs. Arcs can be caused by attempting to apply, though inadvertently in most cases, an earth or rail connection to live equipment, or by opening non-load breaking isolating switches carrying current.

Electric arcs may be the source of an explosion which will scatter molten material, radiate intense light and heat, and emit dangerous quantities of hot gas. Severe burns to the body due to radiated heat and contact with molten materials, and flash injuries to the eyes may result.

Burns may initially appear minor despite significant deep tissue injury. Burns are most often severe at the source (usually hands or head) and ground contact point (usually feet). The severity and extent of tissue damage are influenced by the strength and duration of contact with the source.

Burns from high voltage may appear minor at the surface whilst causing significant damage to underlying deeper tissue. Skin with high resistance will transmit energy to deeper tissues with lower resistance.

Severe tissue burns can result in kidney failure. Low voltage burns look like ordinary thermal burns.

Arcs may also cause a compressed air shock wave which can damage ear drums and create permanent hearing loss.

3.4 Explosion

The electrical energy available through a fault on an electrical power system, particularly an underground cable system, can be substantial. In Sydney Trains, DCCBs are designed to withstand a short-duration prospective fault current of 75 kA. This represents an enormous amount of energy, particularly if the fault is not cleared within a very short time duration.

The destructive potential of the resulting rapidly expanding hot gas, and the other solid material which it may propel, shall not be underestimated.

Under fault conditions, extreme electro-magnetic forces can also have unexpected and destructive consequences.

4 Mitigation Measures against Electric Arcs, Electric Shocks and Explosions

Mitigation measures against the occurrence of electric arcs and explosions include, but not limited to, the following:

- Never operate off-load isolating switches on load.
- Follow the correct procedure when undertaking operating work, (e.g. prove dead at every location immediately prior to the application of earths or rail connections).
- Wear the appropriate PPE when undertaking switching operations, live work, or other work within substations. (Refer to *D2013-80874 PPE for Electrical Work*)
- Work under Electrical Permit conditions unless not practicable to do so. (Refer to PR D 78700 Section 11 Work near electrical equipment)
- Where work is carried out on energised equipment, appropriately Authorised Persons undertaking such work, as described in procedure PR D 78701, shall strictly adhere to the appropriate Safe Work Method Statements, including the correct use of insulated tools.
- Work is assessed, planned, managed, supervised and conducted in accordance with the:
 - *RL D 79800 Electrical Network Safety Rules*
 - *PR D 78700 Working around Electrical Equipment*
 - all documents referenced by the preceding two documents.

5 Particular electrical hazards

5.1 Work activities and tools

5.1.1 Hazardous materials, tools and equipment

Unless there is definite knowledge to the contrary, treat all materials including liquids, gases, metal, tree branches, clothing, ropes, and flames as conductors of electricity.

Unless there is definite knowledge that the item concerned is suitable, approved and maintained in accordance with the SMS and manufacturers' requirements, for use at the voltage concerned, treat all tools and equipment as capable of conducting electricity.

Long objects, particularly metal objects, can be a hazard if not handled with care and Safe Approach Distance from exposed live electrical equipment maintained. Such objects include but are not limited to:

- brooms
- ladders
- long tools
- scaffolding or temporary structures
- lengths of metallic pipe, conduit and reinforcing bars
- portable radio equipment with long or telescopic aerials
- metallic guttering, metal roof or wall sheeting
- rope, hose and wire
- tree branches
- metal rulers/tape measures.

Take care to make sure that long objects are neither placed nor used in positions where they are likely to fall onto, come in contact with, or be blown across, exposed live equipment.

5.1.2 Metallic tapes

WARNING

When working around electrical equipment, use only non-conductive tapes and sticks that have been electrically tested, approved and branded.

Safety Alert D2021/24973 Hazards presented by conductive metallic tapes, state that metallic tape are not allowed within 6m of track.

Steel tapes, metal reinforced linen tapes and steel rulers can be very dangerous as they conduct electricity and are **not** to be used:

- when taking measurements near live exposed electrical equipment, or
- when there is any likelihood that the metal tape/rule might bridge between metal objects that might be at different potentials, for example:
 - between overhead wiring structures and rail (or vehicles on rail)
 - between structures and fencing or metallic troughing

- across gaps or breaks in the rail.

More examples are listed in Section 3.2 Electric shocks and the human body of this document.

Refer to instruction *D2013/80872 Inspection and Testing of Insulated Sticks, Tools and Equipment used for work On or Near Exposed 1500V OHW or Equipment* for the inspection and test requirements of non-conductive measuring tapes to be used around electrical equipment.

5.1.3 Clothing and Personal Items

Jewellery or other items such as metallic watches, bracelets, rings, neck chains, or body piercings, exposed zips or spectacle frames can be hazardous. Such items may be caught on protruding objects or rotating machinery. Metallic items also conduct electricity and will therefore increase the severity of accidental contact with live electrical equipment as they make good contact with the human body.

5.1.4 Handling objects over 1m in length in the vicinity of electrical equipment

Long objects, especially conductive objects such as lengths of guttering, roof sheeting and scaffolding tubes present special risks and must be handled carefully in the vicinity of electrical equipment.

In normal circumstances the minimum SADs in *SP D 79049 Safe Approach Distances (SADs) Table 1 Minimum SADs to exposed electrical equipment for persons and tools they hold*, may be applied safely when two people carry below shoulder height, any long object from opposite ends and control of movement can be absolutely maintained for the duration of the task. (Refer to **Figure 1**)

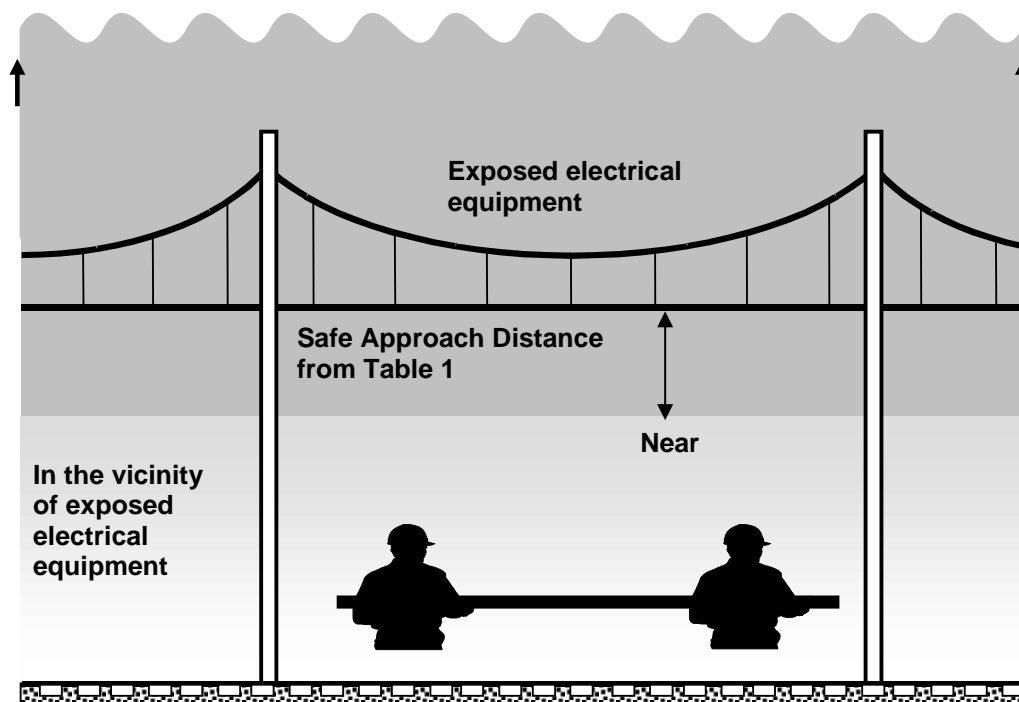


Figure 1: Handling objects over 1 metre in length in the vicinity of electrical equipment (two people)

In the case where one person handles an object longer than 1m an additional distance equal to half the length of the object is to be added to the SADs in SP D 79049 Table 1 Minimum SADs to exposed electrical equipment for persons and tools they hold. For example, if the SAD was 1.5m and the object was 6m long then at least 3m is to be added to give a SAD of 4.5m. (Refer to **Figure 2**)

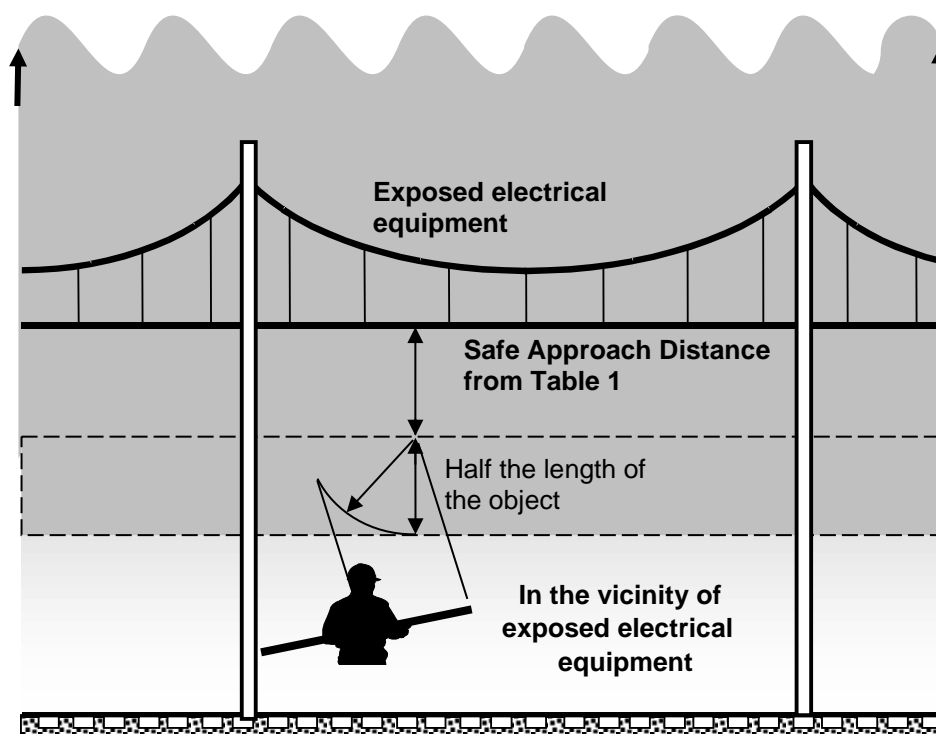


Figure 2: Handling objects over 1 metre in length in the vicinity of electrical equipment (one person)

NOTE

For work **above** exposed electrical equipment, refer to [Section 9 Work above exposed electrical equipment](#)

In all cases, the Line Manager is to:

- assess the site or weather conditions that might reduce the control of the object while working in the vicinity of electrical equipment, and
- assess the suitability of removing the supply for the electrical equipment or implement adequate additional protection or controls.

5.1.5 Flames near electrical equipment

Flame is a good conductor of electricity and care is to be exercised when using flame-producing items near electrical equipment. Under certain circumstances, open flare torches and welding torches can throw a long stream of flame.

Flames near live exposed equipment can cause an arc to form along the path of the flame if a tongue of flame or vapour makes contact with the exposed equipment. Therefore the flame is to maintain the Safe Approach Distance from exposed live electrical equipment.

5.2 Cranes, vehicles and plant

It is possible that the work itself does not infringe the required minimum SADs for persons and tools, for mobile plant, or for work using or erecting scaffolding or temporary structures during the course of work. However, if conductor clearances from ground and structures are reduced on completion of such work it is possible that these may no longer meet the minimum statutory requirements. This could result in a major safety hazard for people working under the aerial line in the future.

Take particular care when using cranes, vehicles or plant fitted with elevating units or tipping trays and items such as extendable lighting masts in the vicinity of electrical equipment.

When looking up at conductors it is often difficult to judge the minimum SADs. Where possible, view the situation from several angles to make sure that the required minimum Safe Approach Distance is not infringed.

Further, Line Managers are to note the magnification of movement that occurs with tall items of equipment on relatively narrow bases. Any movement due to uneven ground, subsidence, or similar may be magnified several times in the resultant movement at the top of the item. For more information regarding these hazards refer to *SP D 79050 Safe Use of Mobile Plant around Electrical Equipment*.

Such plant and equipment include but are not limited to:

- cranes, elevating work platforms
- mobile temporary structures/scaffolding and scaffold tubes carried by hand.

NOTE

There are specific requirements for the safe use of mobile plant in the vicinity of electrical equipment. Refer to SP D 79050.

5.3 Activities altering ground level under aerial conductors

The following activities carried out under or in the vicinity of aerial conductors might result in the statutory clearances of aerial conductors from ground not being maintained and are prohibited:

- building stockpiles
- stacking material
- filling up ground
- earthworks using machinery, especially for those that will result in raised ground level
- placing containers or erecting portable buildings.

NOTE

There are specific requirements for activities around powerlines

Refer to <https://www.transport.nsw.gov.au/sydneytrains/community/power-lines> and SP D 79035 Sydney Trains Electricity Distribution Network Management Plan.

5.4 Fallen wires

WARNING

All persons are to protect themselves and others from the danger of making contact with or approaching fallen aerial conductors or objects that are in contact with fallen conductors.

Treat all such wires and objects as live until the required Electrical Permit has been issued.

Although a contact or catenary wire might have fallen to the rails and potentially caused a short circuit, this does not mean that the 1500 Volt supply has been isolated and made safe. On the contrary, the supply may be switched onto the overhead wiring at intervals.

Supply will be removed from the damaged and adjacent sections to reduce the electrical danger at the site only once ICON Electrical has been informed about the fallen overhead wiring. Do **not** consider the area safe until a Rescue Power Outage (RPO) is instigated or Electrical Permit has been received.

NOTE

8m clearance is required until the relevant permit is issued.

When approaching a derailment or collision, treat vehicles at 1500 Volt potential as they may be in contact with overhead wiring. Separation of the vehicle from the rails could cause the vehicle to be live at 1500 Volt.

5.5 Concealed cables

5.5.1 Concealed cables in building and structures

Line Managers are to consider the presence of concealed cables in buildings and structures before starting work such as cutting or drilling.

Where it is not possible to positively determine that there are no cables in the way before work commences, the Line Manager is to seek the advice from the Electrical Engineering Manager. The Electrical Engineering Manager may require specific procedures to be followed. Work is not to start until the situation has been investigated and advice has been received.

5.5.2 Underground cables and buried services

WARNING

Underground cables and other services are owned by Transport Asset Holding Entity of New South Wales (TAHE) and by other authorities or organisations. Confirm the locations of all services before work involving digging, excavating, boring, piling, installing fence posts, or driving electrodes is begun.

All excavation and earthworks carried out on TAHE property or within 5 metres of TAHE's services shall be carried out in accordance with *SMS-06-OP-3026 Work Health and Safety (WHS) Risk Management* and *SP D 79052 Cables – Work near or on/within* Section 4 Excavation and earth works near or on/within of cables.

Underground services exist within the rail corridor, adjoining rail property, public streets, public property, and within private property. The presence of power poles and aerial

conductors shall not be taken as an indication that there are no buried services in the area. Prior to the commencement of any excavation work or earthwork, an underground services search must be undertaken.

The Line Manager is to make sure all service searches are initiated. The person in charge of the work is to make sure that work does not begin until the services search has been completed and the Line Manager in charge of the work approves of the commencement of the work:

- A Detailed Service search (DSS) identifies all services, including those above and below ground and those owned by other organisations (e.g. Ausgrid). An Internal Service Search (ISS) identifies TAHE's services only.
- For excavation work in the Rail Corridor, the form *SMS-06-FM-4384 Services Search Request* is to be completed and sent to Services.Request@transport.nsw.gov.au. For advice and information, contact the Underground Asset Manager.
- To locate external (i.e. non-TAHE) underground services outside or within the Rail Corridor, contact Dial Before You Dig (DBYD) by phone on 1100 or www.dialbeforeyoudig.com.au.
- To locate TAHE underground services outside the Rail Corridor, contact Dial Before You Dig (DBYD) by phone on 1100 or www.dialbeforeyoudig.com.au.

6 Traction system

6.1 Interfering with negative connections to rail

If the negative cables connecting a substation or sectioning hut to the track or to the track bonding equipment are broken or disconnected, equipment in the substation or sectioning hut could cause the cable voltage to rise to a dangerous level. Similarly, separating a section of rail to which these negative cables are connected from the rest of the track could cause the separated rail to become live at a dangerous voltage.

Report broken or disconnected cables to ICON Electrical on telephone no. (02) 9379 4911.

Line Managers are to coordinate any work requiring disconnection of negative return cables to substations/section huts, such as re-railing, with the relevant Electrical Engineer. Appropriate bridging connections are to be made when negative cables are connected or disconnected, the 1500 Volt supply is to be removed and the persons involved signed on to the appropriate Electrical Permit.

6.2 Disconnecting or removing sections of rail

When removing or disconnecting sections of rail, make allowance for traction return current. This current may be the result of electric traffic on an adjacent track or may be current returning to a nearby substation from more distant electric traffic on the same track.

When a traction rail or traction bonds are disconnected in a section of electrified track beyond which there is no substation (e.g. Port Kembla North to Port Kembla), there is a danger that overhead wiring equipment or equipment on a stationary train might cause the rail ends to become live at a dangerous voltage. For advice regarding this issue, contact the relevant region electrical and signalling representatives.

If it is necessary to remove the 1500 Volt supply to make the work safe, an Electrical Permit is to be issued to make sure that supply is not restored until the rails or traction bonds are reconnected.

For further information refer to *PR S 40026 Rerailing – Precautions to be taken* and *PR S 40027 Traction Return (1500V DC)*.

NOTE

Removing the 1500 Volt supply will not remove the risk of voltage potentials on either side of a gap in the rail.

6.3 Working around portable rail connecting equipment

WARNING

Do not interfere with or remove the connection to rail of portable rail-connecting equipment without the proper authority.

A person breaking the connection of portable rail connection equipment to rail could inadvertently become part of the 1500 Volt circuit, potentially exposing themselves to an electrical hazard and could also render the rail connection ineffective in protecting other workers.

Therefore, all persons are to make sure that the connection to rail of portable rail connecting equipment is not damaged or disconnected. Contact ICON Electrical immediately if accidental damage or disconnection occurs. ICON Electrical will make arrangements with electrical staff if it is necessary for a portable rail connection to be relocated for work to proceed.

6.4 1500 Volt DC Overhead Wiring structures or Equipment

WARNING

When working near or on/within 1500 Volt DC OHW structures, rail or rail connected equipment, (including trains standing on the rails), substations and sectioning huts, only use electric power tools that are:

- **battery operated**
- **supplied from an isolating transformer, generator or inverter.**

There is a possibility that overhead wiring structures may rise to an electrical potential above earth. The risk of persons receiving an electric shock when standing beside an overhead wiring structure and touching the structure, or when standing on the rail, is low but not impossible.

Arrange for an electrically authorised person to test that the structures are not live (refer to *PR D 78306 1500 Volt DC Overhead Wiring Structure to Rail Voltage Test*), if there is a risk of persons touching overhead wiring structures at the same time as touching steel troughing, metal fences, rolling stock or standing on the rail.

7 Earthing system

7.1 Disconnected or broken earth connections

Earth connections between equipment and the earthing system shall not be removed while the equipment is in service unless a suitable alternative earth connection is provided first.

WARNING

If an earth or neutral connection is broken or removed from equipment that is in service, a dangerous voltage may appear on the neutral or earth cable connected to that equipment.

Equipment that can produce dangerous voltages under these conditions includes voltage transformers and surge arresters.

7.2 Substation earth grid voltages and transferred earth potentials

Under fault conditions, substation earth grids can rise to high voltages.

Care shall be taken when working on power cables, metallic telecommunications cables and HV aerial lines into substations. Dangerous voltages could arise between the earth grid and the cable or HV aerial line conductors (including the cable sheath and HV aerial earth) if a substation fault or a remote earth fault occurs during the work.

Appropriate bridging connections shall be made between the equipment being worked on and the substation earth grid.

7.3 Earth grid and earth electrodes

If part of an earthing system is separated, a voltage may appear at the break. When it is necessary to break a part of any earthing system and there is no parallel connection, bridges of equivalent current carrying capacity shall be connected across the part of the earthing system before it is broken, unless all associated equipment has been isolated.

WARNING

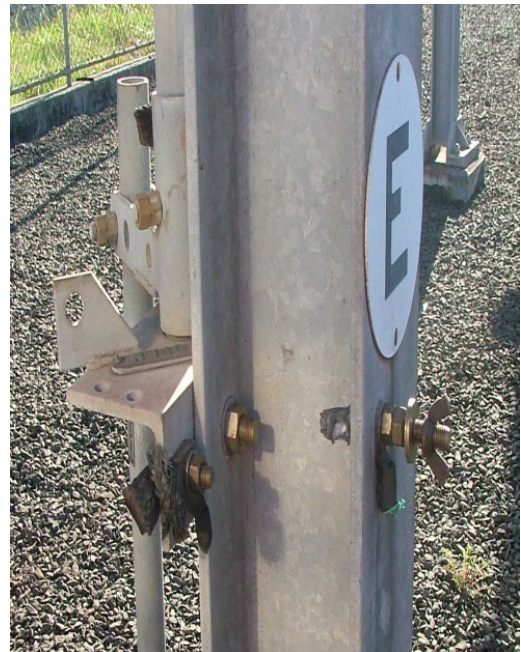
Particular care shall be taken when reconnecting a broken earth lead.

7.4 Check to ensure no missing earthing connections before touching

Incidents of copper theft and other vandalism acts create safety hazards.

To avoid possible electric shock, it is essential that all people gaining access to or working inside substations shall check to ensure that there are no missing earthing connections at substation access gates, fencing and switch operating handles etc. prior to touching such items or undertaking switching operations.

The photographs below show where earthing conductors have been stolen from a substation structure and a switch down rod.



8 Neutral, negative and earth circuits

When working on the neutral, negative or earth circuits, using a voltage tester is not sufficient to establish safe conditions. It is necessary to make sure that no current is flowing as breaking a neutral, negative, or earth connection that is carrying current will result in line voltage appearing across the break.

If a tong tester is available, this could be used to prove that no current is flowing, remembering that on DC equipment a DC tong meter would be needed.

Also note that in the case of the negative for a harmonic filter, while it is in the dc negative circuit, the current through the harmonic filter is audio frequency AC, not DC or mains frequency AC, and care shall be taken to make sure an appropriate instrument is used.

When working on the neutral or negative circuits, other precautions include:

- Checking that the number of connections is what is expected - additional unexpected connections shall be investigated before work proceeds.
- Checking any labels on all conductors connected to a bar or link, not just labels on the conductors being worked on.

9 Rectifier negative

While the rectifier negative circuit is normally near to rail potential, in the event of a fault causing a DCCB opening, high voltages can appear across the reactor and therefore between the rectifier negative and rail.

WARNING

Closing the rail earth contactor (REC) does not reduce the risk of shock from the rectifier negative.

Refer to *PR D 78304 Work on 1500 Volt Negative Equipment Inside Substations* for more details.

10 Capacitors

Capacitors store electrical energy and care shall be taken when working on equipment with capacitors. Large capacitors or banks of capacitors shall be:

- isolated, and then
- discharged through an appropriately rated load or allowed to naturally discharge over an appropriate time frame, and then
- proved dead prior to commencement of work.

WARNING

Ensure that capacitors are isolated, completely discharged (for at least 5 minutes) and “Tested before Touched” prior to working on the equipment.

Capacitors are found in rectifiers, harmonic filters, lighting control equipment and other places. Lengths of screened or metallic sheathed cable also have significant capacitance and shall be treated in the same manner.

11 Battery rooms

On routine inspection and maintenance work, where quantities of electrolyte are handled, a face shield or goggles shall be worn. In addition, when the electrolyte is in liquid form, a dust coat should also be worn. These personal protective equipment (PPE) requirements are in addition to clothing, footwear and other PPE as per PR D 78700.

Unprotected hands and clothing shall be kept away from battery cells at all times.

Work performed on a battery in service shall use methods which preclude circuit interruption or arcing in the vicinity of the battery.

The handles of all tools shall be insulated and step ladders shall be non-metallic. Test equipment leads shall be firmly connected with sufficient length of cable to prevent accidental arcing in the vicinity of the battery. All connections to load test equipment shall include short-circuit protection.

Due to the risk of igniting explosive gases, smoking, the operation of electric hand tools, the use of open flame and the operation of equipment that produces electric arcs **is prohibited** in the immediate vicinity of the battery.

Any spilled electrolyte shall be diluted or neutralised immediately and removed.

If electrolyte splashes in the eye or on the skin, the aim of the treatment is to dilute and eliminate the acid or alkali by flooding the eye or skin immediately with water. Following irrigation of the eye or skin, immediate medical attention shall be sought.

12 Current transformers

The secondary circuit of a current transformer (CT) shall not be open-circuited or left open circuit while the primary circuit is live. Care shall be taken when working on substation wiring, especially protection relays and CT links in circuit breakers.

13 Work on or above and roof equipment of electric vehicles

13.1 Work on or above electric vehicles

An Electrical Permit to Work (refer to *PR D 78501 Electrical Permit to Work*) shall not be issued for work on or above the roof of an electric locomotive or electric vehicle (irrespective of the vehicle being a 4 car or 8 car set) if there is live overhead wiring above the vehicle or any pantograph, regardless of that pantograph being lowered and/or isolated.

13.2 Securing of damaged pantographs

Care shall be taken when it is necessary to secure or make safe a damaged pantograph of an electric rail vehicle. Due to the vehicle design, even if one pantograph is lowered from the overhead wiring, it may still be live as it may be electrically connected to the other pantograph which is raised and in contact with the overhead wiring.

The owner and maintainer shall confirm that the pantograph has been isolated prior to testing dead and commencing work to secure or make safe the damaged pantograph.

If a damaged pantograph is tied down and it is within 50mm of the roof, the pantograph isolating switch shall be opened and all other electrically connected pantographs shall be lowered and the associated air supplies isolated.

13.3 Roof mounted capacitors

Roof-mounted capacitors of electric vehicles shall be treated as being live unless isolated, discharged and proven dead - refer to the “Warning” of Section 10 of this document.

14 Precautions to be undertaken when lightning is imminent

Refer to Figure 3 below for the appropriate precautions to be undertaken when working outdoors and lightning is imminent.

If it is essential to work on the OHW at a time when there is an increased risk due to lightning, all conductors and metallic parts at the worksite shall be bonded together. Under such circumstances, if working on the OHW at a:

- structure, the OHW shall be connected to rail and to that structure, or
- mid-track insulator, both sides of the mid-track insulator shall be bonded together and connected to rail.

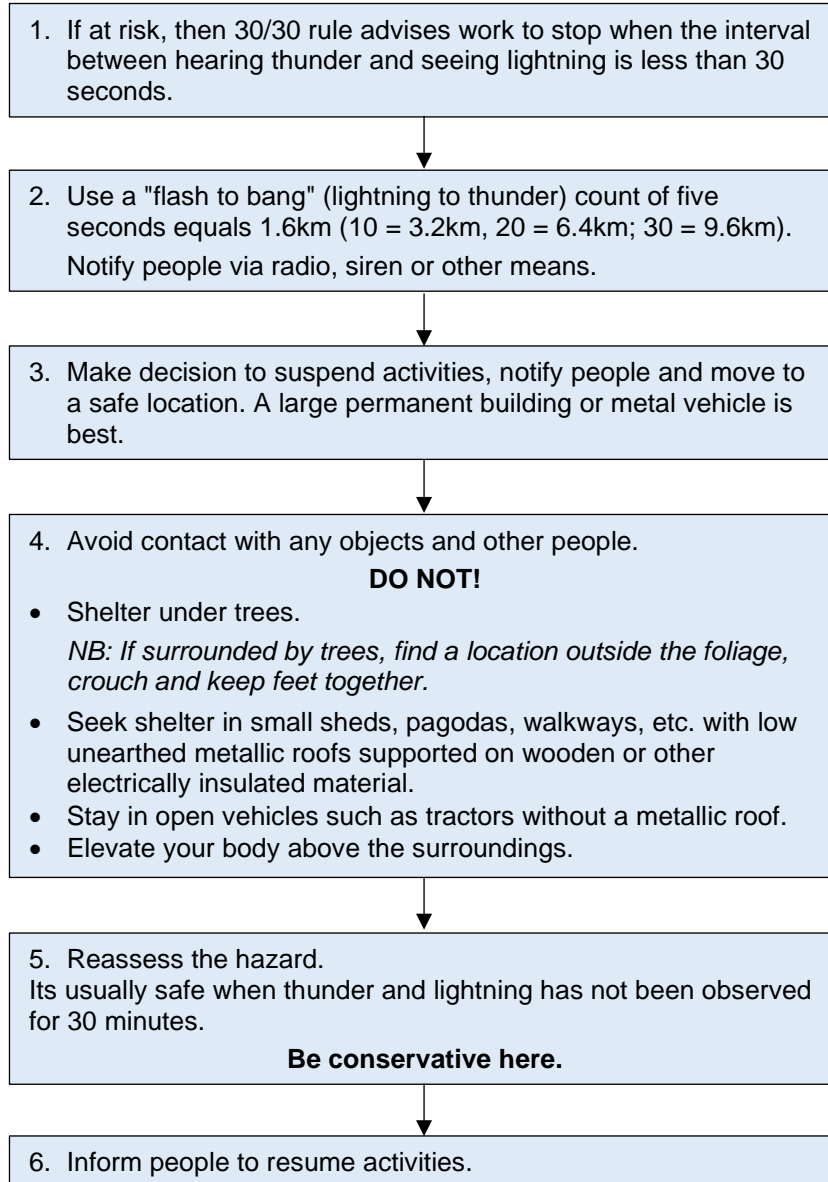


Figure 3: Stay away from lightning using the 30/30 rule. Refer to AS 1768:2021 Lightning Protection for additional information.

15 ‘Danger Do Not Operate’ tags (DANGER Tags)

‘Danger Do Not Operate’ tags (DANGER Tags) serve as a warning that the electrical equipment to which they are attached shall not be operated. DANGER Tags are placed for the safety of persons. Refer to *PR D 78104 Securing Systems for Electrical Equipment* on the correct procedure for using DANGER Tags on electrical equipment.

WARNING

DANGER Tags shall not be interfered with or removed without the proper authority.

16 Warning signs and protective measures

Appropriate permanent or temporary work area markers, safety fences, demarcation taping, warning signs, barriers, guards, plates, warning lights and other protective devices, shall be used as required where hazards exist to employees, contractors or the public as appropriate for the works being undertaken.

NOTE

Particular requirements for demarcation taping of Electrically Safe Work Areas within substations are contained within *PR D 78506 Substation – Demarcation Taping*.

17 Reference documents

AS 1768:2021 Lightning Protection

D2013/80869 Electric Shock Protocol

D2013/80872 Inspection and Testing of Insulated Sticks, Tools and Equipment used for work On or Near Exposed 1500V OHW or Equipment

PR D 78104 Securing Systems for Electrical Equipment

PR D 78304 Work on 1500 Volt Negative Equipment Inside Substations

PR D 78306 1500 Volt DC Overhead Wiring Structure to Rail Voltage Test

PR D 78501 Electrical Permit to Work

PR D 78506 Substation – Demarcation Taping

PR D 78700 Working around Electrical Equipment

PR D 78701 Personnel Certifications – Electrical

PR S 40026 Rerailing – Precautions to be taken

PR S 40027 Traction Return (1500V DC)

RL D 79800 Electrical Network Safety Rules

SMS-06-FM-4384 Services Search Request

SMS-06-OP-3026 Work Health and Safety (WHS) Risk Management

SP D 79049 Safe Approach Distances (SADs)

SP D 79050 Safe Use of Mobile Plant around Electrical Equipment

SP D 79052 Cables – Work near or on/within