

|                               |  |
|-------------------------------|--|
| <b>DOCUMENT NO.</b>           | D2022/2792   |
| <b>WORK DESCRIPTION</b>       | Track inspections and maintenance  |
| <b>WPP NUMBER:</b>            | CN4A1 11372  |
| <b>SCOPE:</b>                 | <p>This SWI is only applicable for the worksite protection arrangements of the routine civil track inspections and maintenance activities performed by the City North Civil team in St Leonards Up Siding. Work activities include:</p> <ul style="list-style-type: none"> <li>Civil track inspections and measurements</li> <li>Track maintenance</li> </ul> <p><b>Points inspections and maintenance</b></p> |
| <b>AUTHORISATIONS:</b>        | <p><b>Protection Officer:</b> Protection Officer Level 1 or higher</p> <p><b>Qualified Worker: Handsignaller Level 1 or higher</b></p>   |
| <b>SAFETY CONTROLS:</b>       | <p>The nominated worksite location for this protection is the <b>St Leonards Up siding</b>.<br/>         NLA 304 Central – Hornsby, St Leonards Up siding, Work on track instructions.<br/> <b>2A points is clipped and locked to prevent rail traffic entry into the worksite location.</b></p>   |
| <b>PRESTART REQUIREMENTS:</b> | <p>Protection Officer assessment checklist must be completed before instructions in this SWI are followed.</p> <p>Tools and equipment required:</p> <ul style="list-style-type: none"> <li>Protection Officer requires a phone to contact the Signaller/Network Controller.</li> </ul> <p>Protection Officer requires a standard point clip to clip and lock the points allowing entry into the siding.</p>    |
| <b>FURTHER INFORMATION:</b>   | <p><i>NWT 300 Planning work in the Rail Corridor</i></p> <p><i>NPR 707 Clipping points</i></p> <p><i>NPR 712 Protecting work from rail traffic on adjacent lines.</i></p> <p><i>NGE 200 Walking in the Danger Zone</i></p> <p><b>NLA 304 Central Hornsby</b></p>   |

**Safe Work Instruction****Worksite Protection for St Leonards Up Siding track inspections and maintenance****Protection Officer assessment checklist****Protection Officer's name:****Yes**  
*(Tick if yes)*

This document has not expired 12 months beyond the issue date.

On-site safety assessment has been completed and additional hazards and controls recorded on the pre-work briefing (Page 3).

The required protection details, environment and tasks are unchanged from the details of this SWI

SWI details and protection arrangements have been reviewed and validated for the assessed worksite location.

**Corridor Safety Number****Protection Officer Signature****Date****Warning**

*If an above item does not apply, the Protection Officer must not use this Safe Work Instruction. A new worksite protection plan must be completed in accordance with NRF 014 Worksite Protection Pre-work briefing and NRF 015 Worksite Protection Plan.*

**Safe Work Instruction**

**Worksite Protection for St Leonards Up Siding track inspections and maintenance**



**Worksite Protection Pre-work Briefing**

Briefing date:

**Protection Officer Details**

Work location: **St Leonards Up siding**

Scope of work: **Track inspections and maintenance**

Worksite protection: **NLA 304 Central – Hornsby, St Leonards Up Siding, Work on track** Refer to Worksite Protection Plan for details

| Hazards (e.g. Site specific hazards identified, including physical environment, human errors, plant and equipment) | Controls (to be implemented to eliminate or reduce the risk to the lowest practicable level)   | Person responsible for Control |
|--|--|--------------------------------|
| <b>Approaching rail traffic</b>  | NLA 304 Central – Hornsby, St Leonards Up siding, Work on track implemented.<br>Rail traffic is prevented from entering the worksite by clipping and locking <b>2A points</b> in the normal position.<br>Workers must remain within worksite limits.                         | Protection Officer             |
| <b>Adjacent live lines</b>   | Closest adjacent track is the <b>Up Shore line</b> and is to be treated as live.<br>Designated work and walk areas as per Protection Officer's instructions.<br>Workers must stay clear of the <b>Up Shore line</b> unless appropriate adjacent line protection is in place. | Protection Officer             |
| <b>Access to / Egress from worksite</b>  | Protection Officer will assess and instruct when it is safe for workers to use <i>NGE 200 Walking in the Danger Zone</i> to move to and from the worksite or safe place.   | All                            |
| <b>Mobile phone distraction</b>  | Mobile phone usage is not allowed in the Danger Zone.<br>Mobile phones may only be used in a safe place after informing the Protection Officer.  | All                            |
|  |  |                                |
|  |  |                                |
|  |  |                                |



## Safe Work Instruction

### Worksite Protection for St Leonards Up Siding track inspections and maintenance



#### Worksite Protection Plan

##### Signaller details

|                                   |   |   |
|-----------------------------------|---|---|
| <input type="text" value="name"/> | <input type="text" value="TSDM North"/> | <input type="text" value="02 8218 1350"/> |
|-----------------------------------|---|---|

##### Protection Officer details

|   |  |  |
|---|--|--|
| <input type="text" value="name"/>           | <input type="text" value="signature"/>   | <input type="text" value="contact No."/> |
| <input type="text" value="RSW or RIW No."/> | <input type="text" value="designation"/> | Planned duration <input type="text"/>    |

Workplace Supervisor details:

Type of work:

#### Worksite location

|         |  |   |
|---------|--|---|
| On the  | <input type="text" value="St Leonards Up siding"/> |   |
| between | <input type="text" value="Clear of 2A Points"/>    | and <input type="text" value="End of Terminal Line (St Leonards Up Siding)"/> |

The following are diagrams, notes, and detailed instructions. These are to be read and followed as part of this worksite protection plan.

|                           |   |
|---------------------------|---|
| <b>INSTRUCTION S:</b>     | <ol style="list-style-type: none"><li>Workers enter rail corridor via gate <b>N30 8.473 U</b>.</li><li>Protection Officer briefs workers about the worksite protection arrangements.</li><li>Protection Officer contacts TSDM North/North Shore to request worksite protection in <b>St Leonards Up siding</b> as per <i>NLA 304 Central – Hornsby, St Leonards Up siding, Work on track</i>.</li><li>Once authorised by Network Controller, instruct Qualified Workers to clip and lock <b>2A points</b> in the normal position to prevent rail traffic entry to the worksite.</li><li>If applicable, prevent any stabled rail traffic within the siding from moving.</li><li>Workers start work.</li><li>After work is completed, move all workers and equipment into a safe place.</li><li>Instruct Qualified Workers to remove point clip on <b>2A points</b>.</li><li>Protection Officer contacts TSDM North to return St Leonards Up Siding to service.</li></ol> |
| <b>ADDITIONAL DETAILS</b> | <p>When clipping and locking 2A points, safety measures must assess and implemented by the Protection Officer to make sure points clips being fitted is done safely.</p> <p>Also, when clipping and locking 2A points, it is critical that the Qualified Worker makes sure that the points are clipped and locked in the <b>normal</b> position to prevent the entry of rail traffic into the worksite.</p>   |

**WORKSITE AND ACCESS / EGRESS**

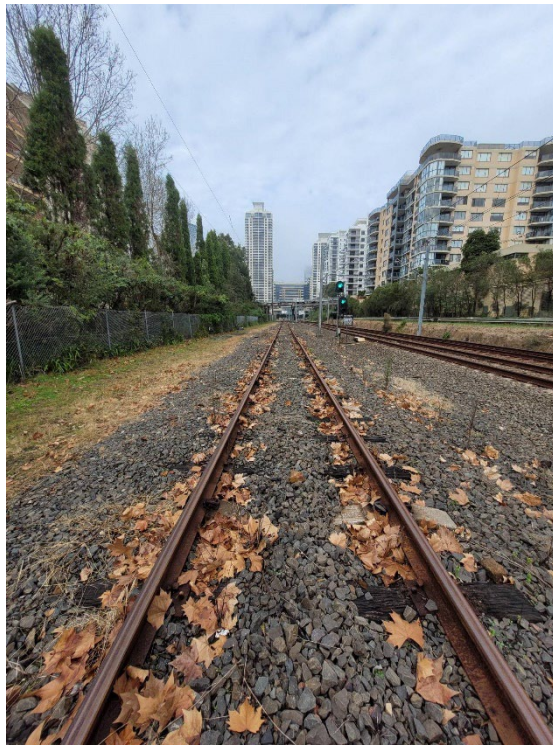


Image 1: View of St Leonards Up siding from the End of Terminal Line.



Image 2: Access gate N30 8.473 U

**POINTS CLIPPED AND LOCKED**

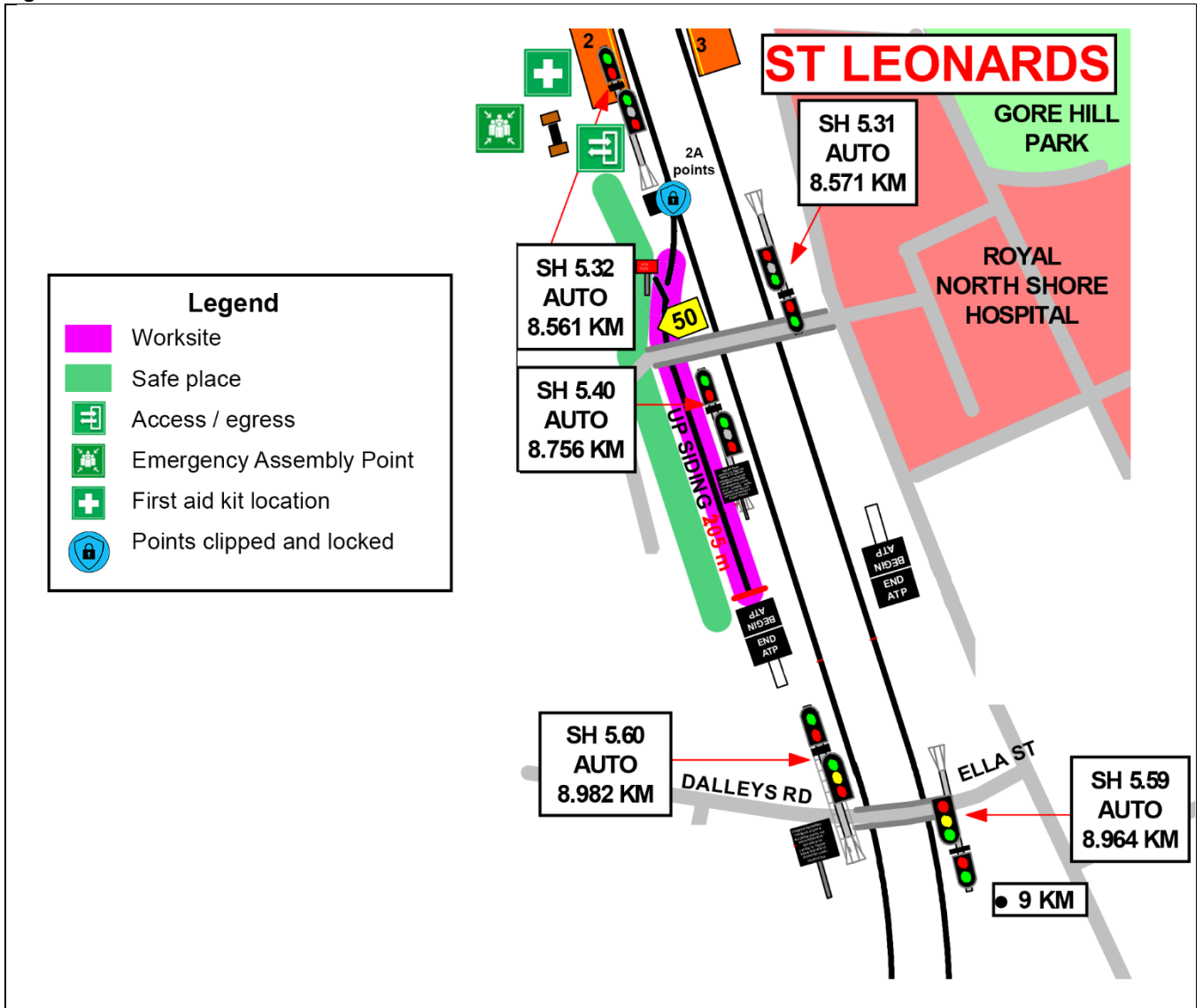


Image 3: Example of 2A points clipped and locked in the normal position to prevent rail traffic entry into the worksite.



Image 4: View of Up Shore leading into the Up siding.

Diagram



Protection Officer's diary

