

<b>DOCUMENT NO.</b>	D2022/2819
<b>WORK DESCRIPTION</b>	Routine Network Maintenance Activities
<b>WPP Number</b>	SC6A2 10119
<b>SCOPE:</b>	<p>This SWI is applicable for the worksite protection arrangements using TOA for routine network maintenance performed by South Coast network maintenance teams</p> <p>Work activities include:</p> <ul style="list-style-type: none"> <li>• Track inspections and measurements</li> <li>• Track maintenance</li> <li>• Signal equipment inspections and maintenance</li> <li>• Points inspection and maintenance</li> <li>• Trainstop inspections and maintenance</li> <li>• Track-circuit testing</li> <li>• Structures inspection and maintenance</li> <li>• OHW patrol and inspection</li> </ul>
<b>AUTHORISATIONS:</b>	<p><b>Protection Officer:</b> Protection Officer Level 2 or higher.</p> <p><b>Placing TOA Protection:</b> Handsignaller Level 1 or higher, or Protection Officer Level 1 or higher.</p>
<b>SAFETY CONTROLS – Track Occupancy Authority (TOA)</b>	<p>The TOA limits are from:</p> <ul style="list-style-type: none"> <li>• <b>WL 93 U Signal and WG 760 U Signal on the Up Illawarra line.</b></li> </ul> <p>Protection is placed at:</p> <ul style="list-style-type: none"> <li>• Railway Track Signal protection and Worksite Protection Markers at <b>39.691 KM</b> and <b>45.681 KM.</b></li> <li>• <b>395 and 394 points</b> are clipped and locked to prevent unauthorised entry into the TOA.</li> <li>• Remove and safeguard the half-staff from either WL 93 U or WG 760 U Signals.</li> </ul>
<b>PRESTART REQUIREMENTS:</b>	<p>Protection Officer assessment checklist must be completed before instructions in this SWI are followed.</p> <p>Tools and equipment required:</p> <ul style="list-style-type: none"> <li>• Protection Officer requires a phone to contact the Signaller.</li> <li>• Qualified Workers clipping and locking points require <ul style="list-style-type: none"> <li>- 2 x Tangential point clips</li> <li>- 2 x SL locks and 1x SL key</li> </ul> </li> <li>• Qualified Workers placing protection require: <ul style="list-style-type: none"> <li>- 6 x Railway Track Signals</li> <li>- 2 x Worksite Protection Markers</li> </ul> </li> </ul>
<b>FURTHER INFORMATION:</b>	<p><i>NWT 300 Planning work in the Rail Corridor</i></p> <p><i>NWT 304 Track Occupancy Authority</i></p> <p><i>NPR 702 Using a Track Occupancy Authority</i></p> <p><i>NPR 707 Clipping points</i></p> <p><i>NRF 002 Track Occupancy Authority (TOA)</i></p> <p><i>NPR 712 Protecting work from rail traffic on adjacent lines</i></p> <p><i>NGE 200 Walking in the Danger Zone</i></p> <p><i>NLA 410 Sutherland to Wollongong</i></p>

**Protection Officer assessment checklist**

Protection Officer's name:		Yes <i>(Tick if yes)</i>
This document has not expired 12 months beyond the issue date.		
On-site safety assessment has been completed and additional hazards and controls recorded on the pre-work briefing (Page 3).		
SWI details and protection arrangements have been reviewed and validated for the assessed worksite location.		
Corridor Safety Number	Protection Officer Signature	Date

**Warning**



*If an above item does not apply, the Protection Officer must not use this Safe Work Instruction. A new worksite protection plan must be completed in accordance with NRF 014 Worksite Protection Pre-work briefing and NRF 015 Worksite Protection Plan.*

**TOA Worksite Protection for Waterfall to Helensburgh Up Illawarra Main**



**Worksite Protection Pre-work Briefing**

Briefing date:

**Protection Officer details**

Work location: **Waterfall to Helensburgh – Up Illawarra Main Line**

Scope of work: **Routine Network Maintenance Activities**

Worksite protection: **TOA** Refer to Worksite Protection Plan for details

Hazards (e.g. Site-specific hazards identified, including physical environment, human errors, plant, and equipment)	Controls (to be implemented to eliminate or reduce the risk to the lowest practicable level)	Person responsible for Control
<b>Approaching rail traffic</b>	TOA implemented.	Protection Officer
<b>Adjacent live lines</b>	Designated work and walk areas as per Protection Officer’s instructions. All work must stop when warned by Protection Officer until rail traffic has passed.	Protection Officer
<b>Electrical infrastructure</b>	Electrical infrastructure is to be treated as live and workers must maintain a safe approach distance as instructed by the Protection Officer or Workplace Supervisor.	Protection Officer & Workplace Supervisor
<b>Mobile phone distraction</b>	Mobile phone usage is only allowed in the Danger Zone when required for work purposes. Other than being used for work purposes, mobile phones may be used only in a safe place after informing the Protection Officer.	All

# Safe Work Instruction

# TOA Worksite Protection for Waterfall to Helensburgh Up Illawarra Main



### Workplace Supervisor details

name  contact No.

Emergency assembly point:  SWMS/SWI Ref #:

First aid kit location:  First aider:

### Workplace Supervisor acknowledgement

The Workplace Supervisor acknowledges that all identified WHS and rail safety hazards have the appropriate controls in place to manage and/or eliminate the hazards. Yes

### Participant Acknowledgement

**NOTE: Recipients of the briefing are to question the Briefer if they don't understand any part of this briefing.**

All workers listed below acknowledge that they:

1. have been inducted to the site 2. are free from alcohol and drugs 3. are free from the effects of fatigue 4. hold the applicable and current Rail Safety Worker Authorisation, trade licence and/or induction record e.g. Construction Industry Induction 5. must wear the appropriate Personal Protective Equipment (PPE)	6. have been briefed on the contents of the Worksite Protection Plan 7. have been shown the Worksite Protection Plan diagram 8. understand the kinds and limits of worksite protection in place 9. have been briefed about any new hazards and controls identified during the final site inspection ( <i>final site inspection must be conducted immediately before commencing work</i> )
---	--

Mark each check box below with a tick  if the item applies or a cross  if the item does not apply.

<input type="checkbox"/> have been informed of the requirements of the electrical permit (if required)	<input type="checkbox"/> have been made aware of any hazardous materials/substances on site
<input type="checkbox"/> have been briefed on the SWMS/SWIs/documentated safe work practice for the job	<input type="checkbox"/> have been briefed on Safety Data Sheets (SDS)
<input type="checkbox"/> have been instructed in the controls recorded in this document and SWMS/SWIs	<input type="checkbox"/> have been briefed on the WHS Management plan
	<input type="checkbox"/> have been briefed on the hazards of adjoining worksites/processes.

Name	Signature	Time of briefing: hh:mm	Amendment briefing: hh:mm and initial

# TOA Worksite Protection for Waterfall to Helensburgh Up Illawarra Main



## Worksite Protection Plan – Track Occupancy Authority

### Signaller details

<input type="text" value="name"/>	<b>Wollongong North Panel</b>	<b>02 4223 5446</b>
-----------------------------------	-------------------------------	---------------------

### Protection Officer details

<input type="text" value="name"/>	<input type="text" value="signature"/>	<input type="text" value="contact No."/>
<input type="text" value="RSW or RIW No."/>	<input type="text" value="designation"/>	Planned duration <input type="text"/>

Workplace Supervisor details:

Type of work:

<b>Worksite location</b>		
on the	<b>Up Illawarra Main Line</b>	
between	<b>40.222 Km</b>	and <b>45.181 Km</b>

The following are diagrams, notes, and detailed instructions. These are to be read and followed as part of this worksite protection plan for TOA.

<b>INSTRUCTIONS:</b>	<ol style="list-style-type: none"> <li>Workers enter the rail corridor via I00 45.849 Access gate off Wilsons Creek Road</li> <li>Protection Officer conducts the worksite protection pre-work briefing.</li> <li>Protection Officer contacts the Signaller at Wollongong North Panel and requests TOA.</li> <li>Instruct Qualified Workers to place Railway Track Signal protection and Worksite Protection Markers at <b>39.691 KM</b> and <b>45.681 KM</b> on the <b>Up Illawarra line</b>.</li> <li>Instruct Qualified Workers to clip and lock <b>394 and 395 points</b> to prevent rail traffic entry into the TOA.</li> <li>Remove the half pilot staff if required.</li> <li>Protection Officer informs the workplace supervisor that it is safe for work to start.</li> <li>Workers start work.</li> <li>After all work is completed, move all workers and equipment into a safe place.</li> <li>Instruct Qualified Workers to remove Railway Track Signal protection, Worksite Protection Markers and point clips from the TOA.</li> <li>Workers egress the rail corridor via the most practicable access gate.</li> <li>After all protection is removed, Protection Officer contacts the Signaller Wollongong North Panel that work is complete, all protection has been removed from the line, workers and equipment are clear of the Danger Zone and if any restrictions have been applied to fulfil the TOA.</li> </ol>
<b>ADDITIONAL DETAILS</b>	When clipping and locking 394 and 395 points, it is critical that the Qualified Worker makes sure that the points are clipped and locked in the correct position that excludes rail traffic from the worksite and TOA.

# TOA Worksite Protection for Waterfall to Helensburgh Up Illawarra Main

POINTS TO BE  
CLIPPED AND  
LOCKED



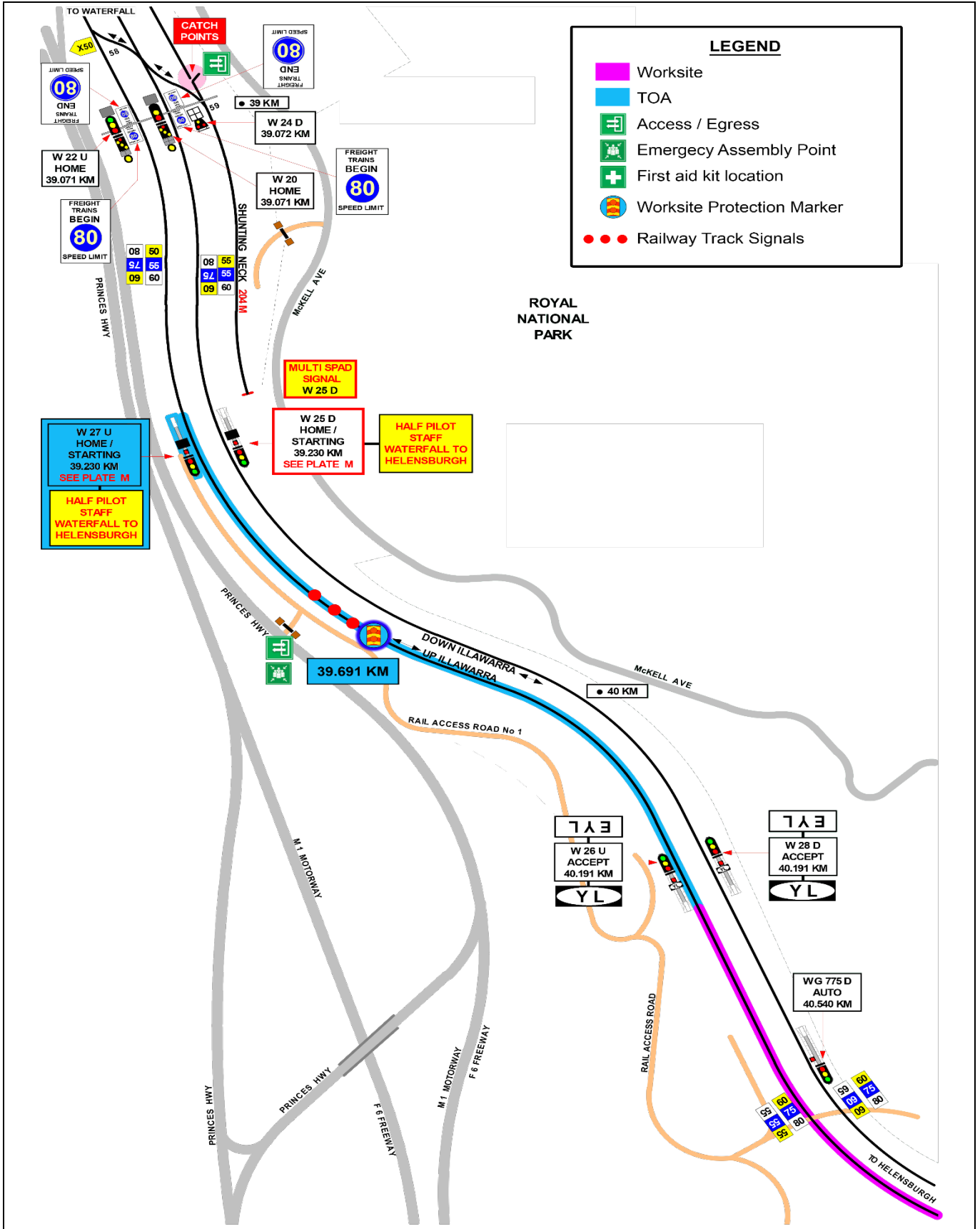
Image 1: 394 points



Image 2: 395 points

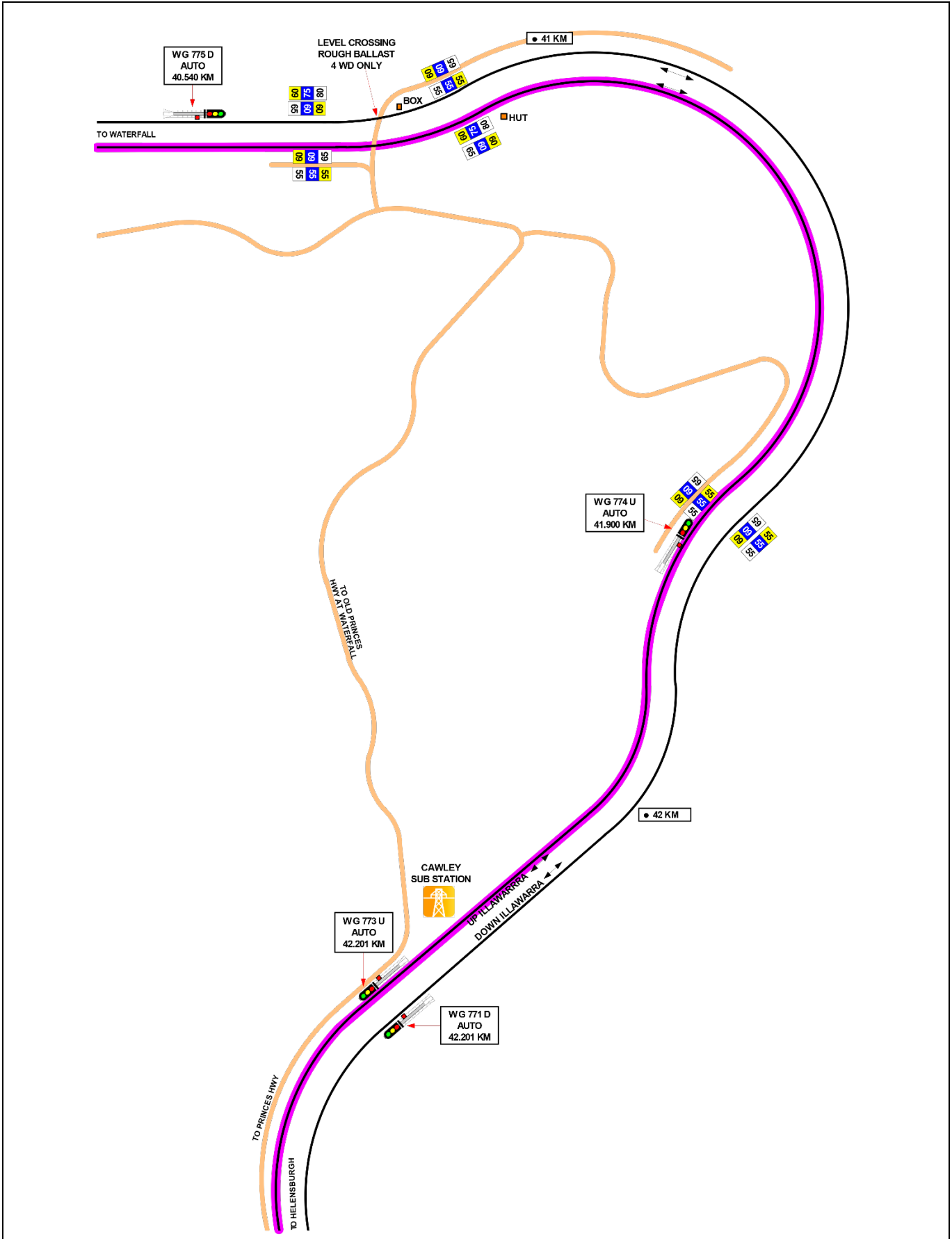
# TOA Worksite Protection for Waterfall to Helensburgh Up Illawarra Main

Diagram



# TOA Worksite Protection for Waterfall to Helensburgh Up Illawarra Main

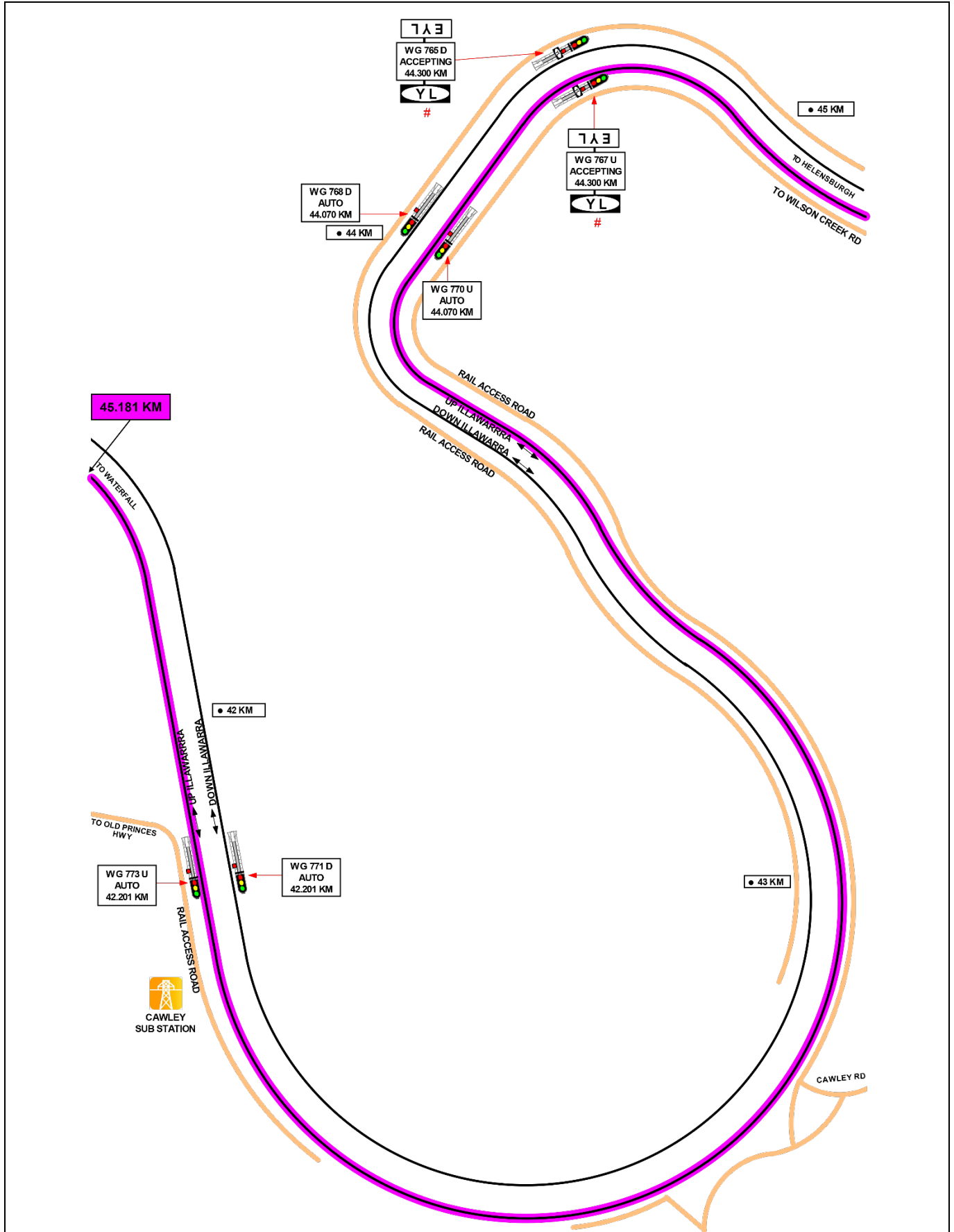
Diagram





# TOA Worksite Protection for Waterfall to Helensburgh Up Illawarra Main

Diagram



# TOA Worksite Protection for Waterfall to Helensburgh Up Illawarra Main

Diagram

