

<b>DOCUMENT NO.</b>	D2022/2819	
<b>WORK DESCRIPTION</b>	Routine network maintenance activities	
<b>WPP Number</b>	SC6A2 10119	<b>SAP Code</b>
<b>SCOPE:</b>	<p>This SWI is applicable for the worksite protection arrangements using TOA for routine network maintenance performed by South Coast network maintenance teams</p> <p>Work activities include:</p> <ul style="list-style-type: none"> <li>• Track inspections and measurements</li> <li>• Track maintenance</li> <li>• Signal equipment inspections and maintenance</li> <li>• Points inspection and maintenance</li> <li>• Trainstop inspections and maintenance</li> <li>• Track-circuit testing</li> <li>• Structures inspection and maintenance</li> <li>• OHW patrol and inspection</li> </ul>	
<b>AUTHORISATIONS:</b>	<p><b>Protection Officer:</b> Protection Officer Level 2 or higher.</p> <p><b>Placing TOA Protection:</b> Handsignaller Level 1 or higher, or Protection Officer Level 1 or higher.</p>	
<b>SAFETY CONTROLS – Track Occupancy Authority (TOA)</b>	<p>The TOA limits are from:</p> <ul style="list-style-type: none"> <li>• <b>W 27 U Signal and WG 760 U Signal on the Up Illawarra line.</b></li> </ul> <p>Protection is placed at:</p> <ul style="list-style-type: none"> <li>• Railway Track Signal protection and Worksite Protection Markers at <b>39.691 KM</b> and <b>45.681 KM</b>.</li> <li>• <b>395 and 394 points</b> are clipped and locked to prevent unauthorised entry into the TOA.</li> <li>• Remove and safeguard the half-staff from either W27 U or WG760 U Signals.</li> </ul>	
<b>PRESTART REQUIREMENTS:</b>	<p>Protection Officer assessment checklist must be completed before instructions in this SWI are followed.</p> <p>Tools and equipment required:</p> <ul style="list-style-type: none"> <li>• Protection Officer requires a phone to contact the Signaller.</li> <li>• Qualified Workers clipping and locking points require <ul style="list-style-type: none"> <li>- 2 x Tangential point clips</li> <li>- 2 x SL locks and 1x SL key</li> </ul> </li> <li>• Qualified Workers placing protection require: <ul style="list-style-type: none"> <li>- 6 x Railway Track Signals</li> <li>- 2 x Worksite Protection Markers</li> </ul> </li> </ul>	
<b>FURTHER INFORMATION:</b>	<p><i>NWT 300 Planning work in the Rail Corridor</i></p> <p><i>NWT 304 Track Occupancy Authority</i></p> <p><i>NPR 702 Using a Track Occupancy Authority</i></p> <p><i>NPR 707 Clipping points</i></p> <p><i>NRF 002 Track Occupancy Authority (TOA)</i></p> <p><i>NPR 712 Protecting work from rail traffic on adjacent lines</i></p> <p><i>NGE 200 Walking in the Danger Zone</i></p> <p><i>NLA 410 Sutherland to Wollongong</i></p>	

## Protection Officer assessment checklist

Protection Officer's name:		<b>Yes</b> <i>(Tick if Yes)</i>
This document is still current at the time of its application? (up to 12 months from the document issue date)		
SWI details and protection arrangements have been reviewed and validated for the assessed worksite location, including: <ul style="list-style-type: none"> <li>On-site safety assessment has been completed for relevancy of works being undertaken</li> <li>The required protection details, environment and tasks are unchanged from the details of this SWI</li> </ul>		
The Protection Officer and Qualified Workers deploying qualifications are current and have practiced in the last 6 months. If not practiced, then a Rail Safety Coach must be contacted for guidance.		
<b>Corridor Safety Number</b>	<b>Protection Officer Signature</b>	<b>Date</b>

**Warning**

*If an above item does not apply, the Protection Officer must not use this Safe Work Instruction. A new worksite protection plan must be completed in accordance with NRF 014 Worksite Protection Pre-work briefing and NRF 015 Worksite Protection Plan.*





# TOA Worksite Protection for Waterfall to Helensburgh Up Illawarra Main



## Worksite Protection Plan – Track Occupancy Authority

### Signaller Details

<input type="text" value="name"/>	<b>Wollongong North Panel</b>	<b>02 4223 5446</b>
-----------------------------------	-------------------------------	---------------------

### Protection Officer Details

<input type="text" value="name"/>	<input type="text" value="signature"/>	<input type="text" value="contact No."/>
<input type="text" value="RSW or RIW No."/>	<input type="text" value="designation"/>	Planned duration <input type="text"/>

Workplace Supervisor details:

Type of work:

### Worksite Location

On the	<input type="text" value="Up Illawarra Main Line"/>	
between	<input type="text" value="W 26 U signal (Waterfall)"/>	and <input type="text" value="WG 760 U signal (Helensburgh)"/>

The following are diagrams, notes and detailed instructions. These are to be read and followed as part of this worksite protection plan for TOA.

<b>INSTRUCTIONS:</b>	<ol style="list-style-type: none"> <li>1. Workers enter the rail corridor via 100 45.849 Access gate off Wilsons Creek Road</li> <li>2. Protection Officer conducts the worksite protection pre-work briefing.</li> <li>3. Protection Officer contacts the Signaller at Wollongong North Panel and requests TOA.</li> <li>4. Instruct Qualified Workers to place Railway Track Signal protection and Worksite Protection Markers at <b>39.691 KM</b> and <b>45.681 KM</b> on the <b>Up Illawarra line</b>.</li> <li>5. Instruct Qualified Workers to clip and lock <b>394 and 395 points</b> to prevent rail traffic entry into the TOA.</li> <li>6. Remove the half pilot staff if required</li> <li>7. Protection Officer informs the workplace supervisor that it is safe for work to start.</li> <li>8. Workers start work.</li> <li>9. After all work is completed, move all workers and equipment into a safe place.</li> <li>10. Instruct Qualified Workers to remove Railway Track Signal protection, Worksite Protection Markers and point clips from the TOA.</li> <li>11. Workers egress the rail corridor via the most practicable access gate.</li> <li>12. After all protection is removed, Protection Officer contacts the Signaller Wollongong North Panel that work is complete, all protection has been removed from the line, workers and equipment are clear of the Danger Zone and if any restrictions have been applied to fulfil the TOA.</li> </ol>
<b>ADDITIONAL DETAILS</b>	When clipping and locking 394 and 395 points, it is critical that the Qualified Worker makes sure that the points are clipped and locked in the correct position that excludes rail traffic from the worksite and TOA.

# TOA Worksite Protection for Waterfall to Helensburgh Up Illawarra Main

POINTS TO BE  
CLIPPED AND  
LOCKED



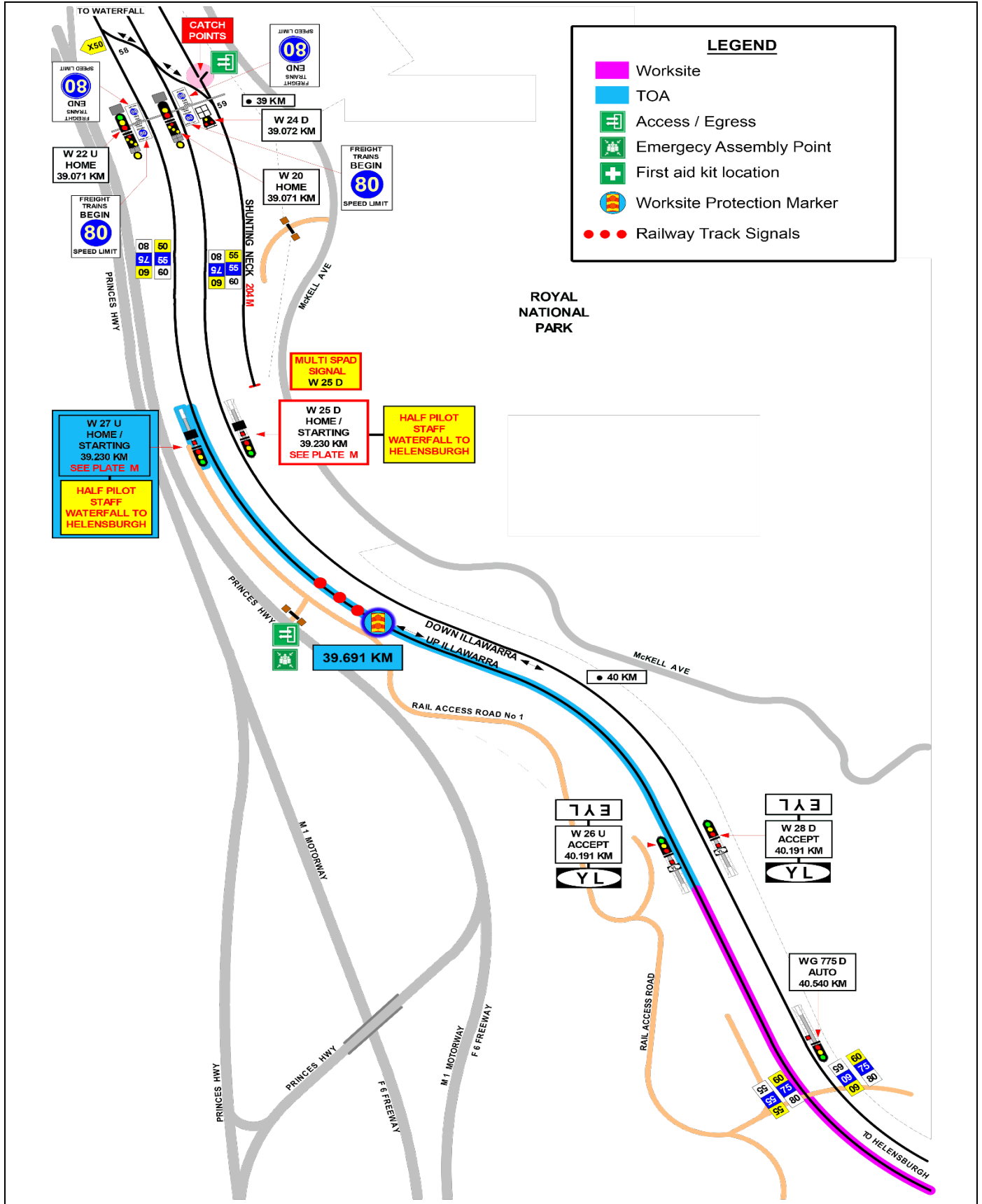
Image 1: 394 points



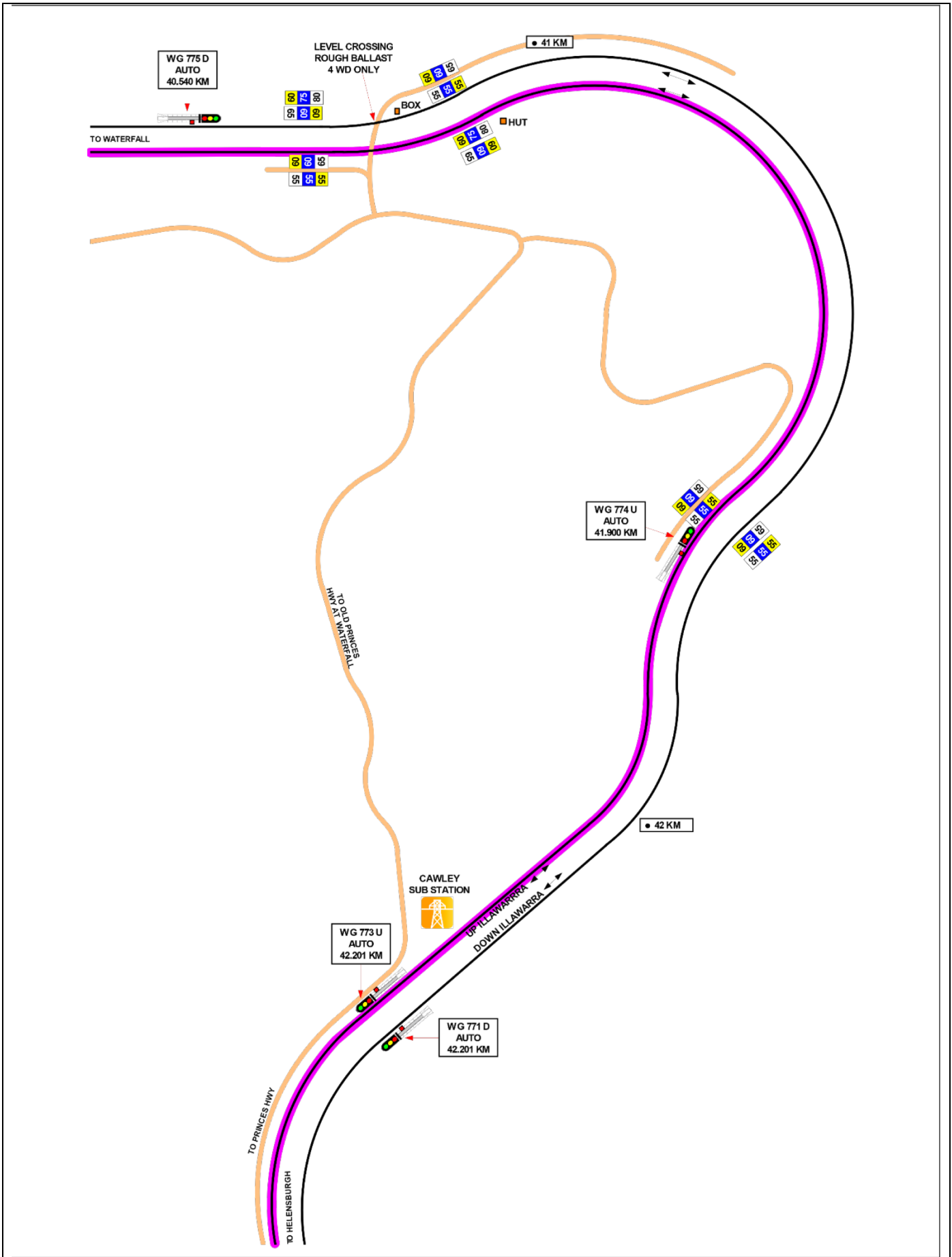
Image 2: 395 points

# TOA Worksite Protection for Waterfall to Helensburgh Up Illawarra Main

Diagram

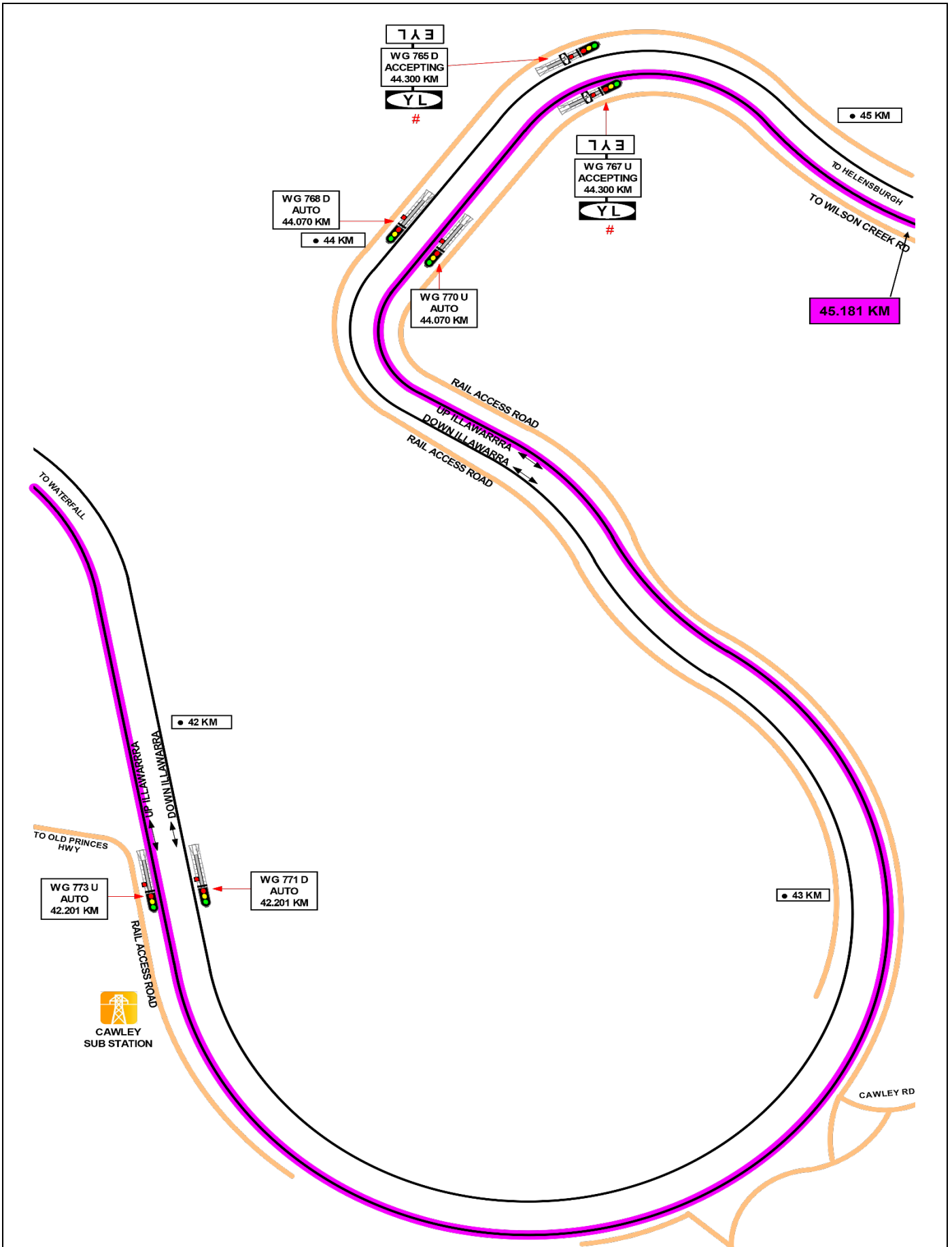


# TOA Worksite Protection for Waterfall to Helensburgh Up Illawarra Main





# TOA Worksite Protection for Waterfall to Helensburgh Up Illawarra Main



# TOA Worksite Protection for Waterfall to Helensburgh Up Illawarra Main

