

DOCUMENT NO.	D2021/27900
WORK DESCRIPTION	Track inspections and civil maintenance – Fixed Worksite.
WPP Number	SW2B 12282
SCOPE:	<p>This SWI is applicable for the worksite protection arrangements using lookout working concerning routine network maintenance, defect management and repair of assets within the limits specified below and in the attached plan.</p> <p>Work activities include:</p> <ul style="list-style-type: none"> Routine preventative and corrective work such as Civil inspections and maintenance as appropriate for the type of protection being applied as part of this plan.
AUTHORISATIONS:	<p>Protection Officer: ARTC Qualified Protection Officer Level 1 or higher with a current CAA Number</p> <p>Lookout: Engineering Hand signaller Level 1 or higher or Protection Officer Level 1 or higher.</p>
SAFETY CONTROLS: Lookout working arrangements	<p>The nominated worksite location for Lookout Working is a fixed worksite and includes the NSW Trains Storage Sidings between Frame 2E and the End of Terminal Line plus the Fuel Point between the NSW Trains boundary marker and Frame 2E.</p> <p>The Protection Officer must:</p> <ul style="list-style-type: none"> Establish Lookouts as required to watch for approaching rail traffic from all entry points Designate and instruct which safe places the workers are to use as the work is completed along the work route within the worksite limits.
PRESTART REQUIREMENTS:	<p>Protection Officer assessment checklist must be completed before instructions in this SWI are followed.</p> <p>Tools and equipment required:</p> <ul style="list-style-type: none"> Protection Officer requires a phone to contact the Signaller. Lookouts require a high-visibility arm sleeve and a whistle/horn.
FURTHER INFORMATION:	<p><i>NWT 300 Planning work in the Rail Corridor</i></p> <p><i>NWT 310 Lookout Working</i></p> <p><i>NPR 711 Using Lookouts</i></p> <p><i>NPR 751 Calculating Minimum Warning Time</i></p> <p><i>NPR 712 Protecting work from rail traffic on adjacent lines</i></p> <p><i>NGE 200 Walking in the Danger Zone</i></p> <p><i>NLA 320 Broadmeadow - Newcastle Interchange</i></p> <p><i>Lookout Working Prohibited Locations Register</i></p> <p><i>NLA - TBA</i></p>

Safe Work Instruction**Lookout Working Worksite Protection for Moss Vale Routine Track Inspections and Civil Maintenance****Protection Officer assessment checklist**

Protection Officer's name:		Yes <i>(Tick if Yes)</i>
This document has not expired 12 months beyond the issue date.		
SWI details and protection arrangements have been reviewed and validated for the assessed worksite location, including: <ul style="list-style-type: none"> • On-site safety assessment has been completed for relevancy of works being undertaken • The required protection details, environment and tasks are unchanged from the details of this SWI 		
The Protection Officer and Qualified Workers deploying qualifications are current and have practiced in the last 6 months. If not practiced, then a Rail Safety Coach must be contacted for guidance.		
Corridor Safety Number	Protection Officer Signature	Date

**Warning**

If an above item does not apply, the Protection Officer must not use this Safe Work Instruction. A new worksite protection plan must be completed in accordance with NRF 014 Worksite Protection Pre-work briefing and NRF 015 Worksite Protection Plan.

Safe Work Instruction

Lookout Working Worksite Protection for Moss Vale Routine Track Inspections and Civil Maintenance



Worksite Protection Pre-work Briefing

Briefing date: / /

Protection Officer details

name signature contact No.

Work location: **Moss Vale Yard (NSW Trains Storage Sidings and Refuelling Point)**

Scope of work: **Track inspections and civil maintenance**

Worksite protection: **Lookout Working** Refer to Worksite Protection Plan for details

Hazards (e.g., Site specific hazards identified, including physical environment, human errors, plant and equipment)	Controls (to be implemented to eliminate or reduce the risk to the lowest practicable level)	Person responsible for Control
<ul style="list-style-type: none"> Approaching rail traffic 	<p>Lookouts must be trained and competent to perform lookout duties.</p> <p>Lookouts must be rotated if performing lookout for extended periods of time</p> <p>Workers to remain within worksite limits as set out in this procedure.</p> <p>Lookouts must be placed as per protection plan on page 8.</p> <p>Workers are to stop work and move to a safe place immediately on being warned by the lookouts</p>	Protection Officer and Lookout
<ul style="list-style-type: none"> Live adjacent lines 	<p>Lookouts must provide warning to workers when rail traffic is approaching from the adjacent line in either direction.</p>	Protection Officer and Lookout
Two - way running / multiple entry points into worksite	<p>One Lookout placed watching each direction before work starts. Lookouts are to warn workers of approaching rail traffic, including rail traffic entering or travelling within the worksite. Workers are to stop work and move to a safe place.</p>	Protection Officer and Lookout
Obstruction to Minimum Sighting Distance	<p>Lookouts must provide warning to the workers whenever their line of sight is obstructed by passing rail traffic. Workers must stop work and move to a safe place and reassess positioning and method</p>	Protection Officer and Lookout
Adjoining/Surrounding Worksites	<p>Lookouts must have two independent audible warning devices that can be heard by workers over any noise generated by adjoining/surrounding worksites.</p> <p>Lookouts are to provide warning if their line of sight is obstructed by adjoining/surrounding worksites.</p>	Protection Officer and Lookout
Access to / Egress from worksite Slips, trips, falls and hazards carrying equipment	<p>Access and egress points must be agreed prior to entering the danger zone, consideration should be given to ease of access and safest possible entry and exit points.</p> <p>Protection Officer will assess and instruct when it is safe for workers to use <i>NGE 200 Walking in the Danger Zone</i> to move to the worksite or safe place.</p>	All
Mobile phone	<p>Mobile phones use is not permitted in the danger zone unless being used by maintenance staff for critical maintenance communications or recording of defects.</p>	All

Safe Work Instruction

Lookout Working Worksite Protection for Moss Vale Routine Track Inspections and Civil Maintenance



Worksite Protection Plan – Lookout Working

Signaller details

name Junee Panel 02 6924 9807

Protection Officer details

name signature contact No. RSW or RIW No. designation Planned duration

Workplace Supervisor details:

Type of work: Track inspections and civil maintenance

Worksite location

on the NSW Trains Storage Sidings and Refuelling Point between Frame 2E to Boundary Marker and Frame 2E to End of Terminal Line

Worksite assessment

Has the Lookout Working Prohibited Locations Register been consulted? Yes

Warning method

Horn/Whistle Voice/Touch

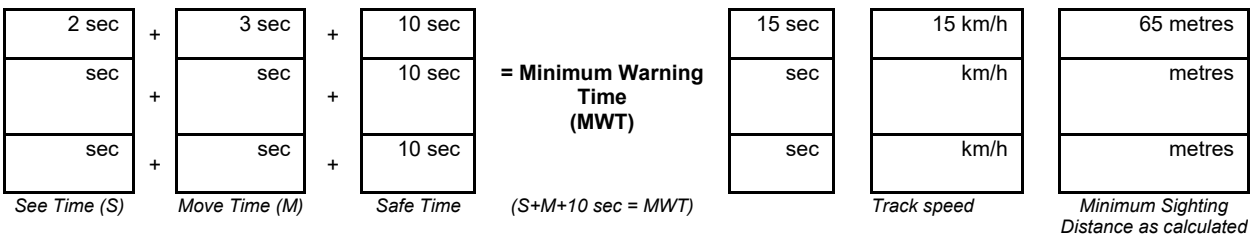
Minimum Warning Time Calculations

Maximum track speed 15 km/h

Number of Lookouts used 1 Position of Lookouts 145.200 km to 145.670 km

Number of additional Lookouts* used 0 Position of Lookouts km to km

Note - Lookouts are relocated to positions within these KMs as workers move along the worksite.



Note – Additional MWT calculations can be recorded in the Protection Officer’s Diary.

Where are the safe places identified for the Lookouts and the workers?

Lookouts: Up & Down cess and Pathways

Workers: Up & Down cess and Pathways

Ensure the workers have been briefed about these work details Yes

Diagrams, notes, and detailed instructions are over the next pages. These are to be read and followed as part of this worksite protection plan for Lookout Working.

Lookout Working Worksite Protection for Moss Vale Routine Track Inspections and Civil Maintenance

INSTRUCTIONS:

1. Workers enter the rail corridor via **Access Gate**
2. Protection Officer briefs workers about the worksite protection arrangements.
3. Protection Officer contacts **June Panel** and tells the Signaller about the use of Lookout Working.
4. Establish Lookouts at designated locations.
5. Workers start work up to designated locations.
6. Workers move to safe place.
7. Re-establish Lookouts at next designated location.
8. Repeat steps 6-8 until work is complete.
9. Workers move to a safe place.
10. Recall lookouts.
11. Workers egress the worksite via **Access Gate**
12. Protection Officer contacts **June Panel** to end Lookout Working.

ADDITIONAL DETAILS

Obstruction to Minimum Sighting Distance

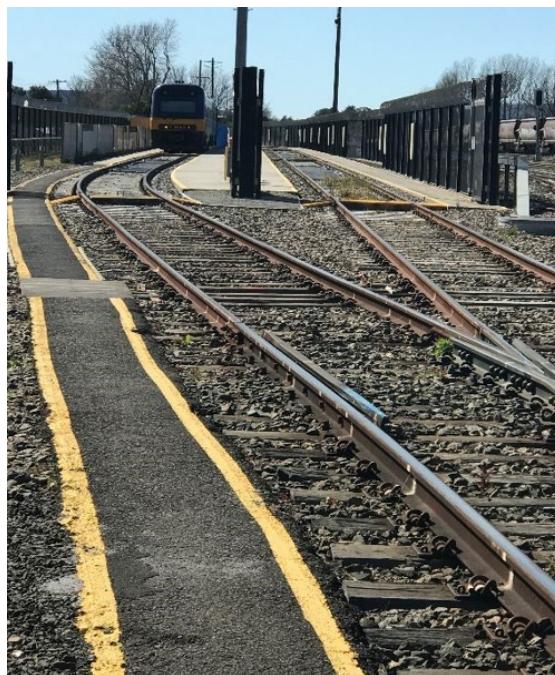
Stabled rail traffic on any tracks and conditions on the day may obstruct minimum sighting distance. When this hazard is identified, workers must stop work and move to a safe place until the Protection Officer makes an assessment and relocates lookouts to achieve the required minimum sighting distance.


LOOKOUTS

Image 1: View of Lookout in the Down direction from the Refuelling Point, Clear Of 2E Points to the boundary marker.



Image 2: View of Lookout in the Up direction on the Storage Siding compound up to end of terminal lines Clear Of 2E Points.



 Lookouts are established in safe places at designated locations along the worksite as determined by the Protection Officer

