

DRIVERS ROUTE KNOWLEDGE DIAGRAMS

CHATSWOOD TO EPPING LINE

CHATSWOOD

LADY GAME DRIVE
SERVICE FACILITY

NORTH RYDE

MACQUARIE PARK

MACQUARIE UNIVERSITY

EPPING

THE CHATSWOOD TO EPPING LINE IS TEMPORARILY CLOSED AND WILL FORM PART OF THE SYDNEY METRO UPON REOPENING.

Effective Date: October 2018

Version: 4.17

Explanatory Notes:

Navigate to your area of interest via the station index or by using links created in Adobe bookmarks.

This document is approved for **route knowledge only**.

Do not use these diagrams for any safety related purpose without validating the information against a controlled source or in the field.

Information in these diagrams is uncontrolled.

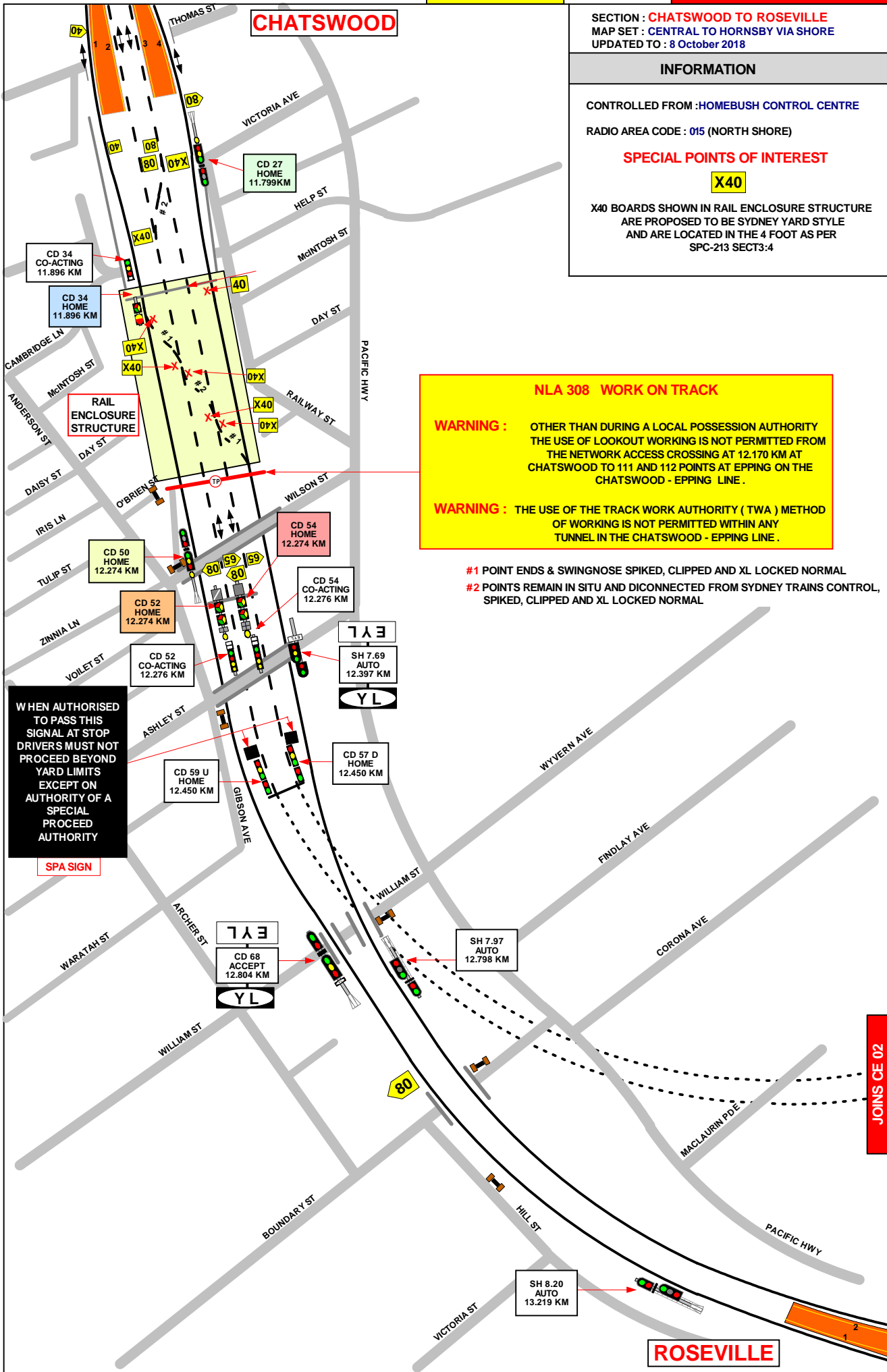
Please report any updates to
gjs.support@transport.nsw.gov.au



Copyright: Sydney Trains

Ownership: Geospatial Services,
Enterprise Asset Systems

Location: TRIM Record No.D2015/584



SECTION : CHATSWOOD TO ROSEVILLE
 MAP SET : CENTRAL TO HORNSBY VIA SHORE
 UPDATED TO : 8 October 2018

INFORMATION

CONTROLLED FROM : HOME BUSH CONTROL CENTRE
 RADIO AREA CODE : 015 (NORTH SHORE)

SPECIAL POINTS OF INTEREST

X40

X40 BOARDS SHOWN IN RAIL ENCLOSURE STRUCTURE ARE PROPOSED TO BE SYDNEY YARD STYLE AND ARE LOCATED IN THE 4 FOOT AS PER SPC-213 SECT3:4

NLA 308 WORK ON TRACK

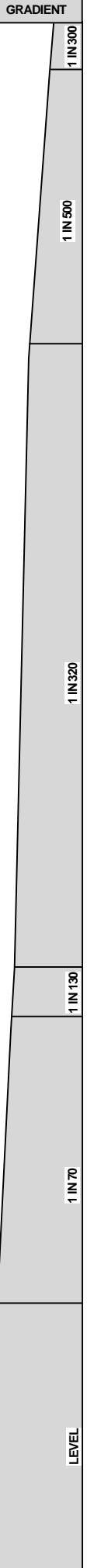
WARNING : OTHER THAN DURING A LOCAL POSSESSION AUTHORITY THE USE OF LOOKOUT WORKING IS NOT PERMITTED FROM THE NETWORK ACCESS CROSSING AT 12.170 KM AT CHATSWOOD TO 111 AND 112 POINTS AT EPPING ON THE CHATSWOOD - EPPING LINE .

WARNING : THE USE OF THE TRACK WORK AUTHORITY (TWA) METHOD OF WORKING IS NOT PERMITTED WITHIN ANY TUNNEL IN THE CHATSWOOD - EPPING LINE .

- #1 POINT ENDS & SWINGNOSE SPIKED, CLIPPED AND XL LOCKED NORMAL
- #2 POINTS REMAIN IN SITU AND DICONNECTED FROM SYDNEY TRAINS CONTROL, SPIKED, CLIPPED AND XL LOCKED NORMAL

WHEN AUTHORISED TO PASS THIS SIGNAL AT STOP DRIVERS MUST NOT PROCEED BEYOND YARD LIMITS EXCEPT ON AUTHORITY OF A SPECIAL PROCEED AUTHORITY

SPA SIGN



SECTION : **CHATSWOOD TO EPPING**
 MAP SET : **CHATSWOODS STATION**
 UPDATED TO : **8 October 2018**

INFORMATION

CONTROLLED FROM : **HOME BUSH CONTROL CENTRE**
 RADIO AREA CODE : **019 (EPPING)**

SPA SIGN

WHEN AUTHORISED TO PASS THIS SIGNAL AT STOP DRIVERS MUST NOT PROCEED BEYOND YARD LIMITS EXCEPT ON AUTHORITY OF A SPECIAL PROCEED AUTHORITY

SPA BOARDS ADJACENT SIGNALS CD 57 D AND CD 59 U ON CHATSWOOD TO EPPING RAIL LINK SECTION

SIGNAL	DESTINATION	INDICATION
CD 15	No.3 PLATFORM (M)	-
	No.4 PLATFORM (M)	-
	No.3 PLATFORM (S)	3
	No.4 PLATFORM (S)	4

SIGNAL	DESTINATION	INDICATION
CD 27	DOWN SHORE (M)	-
	DOWN CHATSWOOD-EPPING (M)	-
	DOWN SHORE (S)	DS
	DOWN CHATSWOOD-EPPING (S)	DE

SIGNAL	DESTINATION	INDICATION
CD 29	DOWN SHORE (M)	M
	DOWN CHATSWOOD-EPPING (M)	-
	UP CHATSWOOD-EPPING (M)	UE
	DOWN SHORE (S)	DM
	DOWN CHATSWOOD-EPPING (S)	DE
	UP CHATSWOOD-EPPING (S)	UE

SIGNAL	DESTINATION	INDICATION
CD 33	DOWN SHORE (M)	DS
	DOWN CHATSWOOD-EPPING (M)	DE
	UP CHATSWOOD-EPPING (M)	UE
	DOWN SHORE (S)	DS
	DOWN CHATSWOOD-EPPING (S)	DE
	UP CHATSWOOD-EPPING (S)	UE

SIGNAL	DESTINATION	INDICATION
CD 34	No.1 PLATFORM (M)	-

SIGNAL	DESTINATION	INDICATION
CD 38	No.3 PLATFORM (M)	
	No.3 PLATFORM (S)	

SIGNAL	DESTINATION	INDICATION
CD 50	UP SHORE (M)	-
	UP SHORE (S)	-

SIGNAL	DESTINATION	INDICATION / CO-ACTING	
CD31	DOWN SHORE (M)	DS	DS
	DOWN CHATSWOOD-EPPING (M)	DE	DE
	UP CHATSWOOD-EPPING (M)	-	UE
	DOWN SHORE (S)	DS	DS
	DOWN CHATSWOOD-EPPING (S)	DE	DE
	UP CHATSWOOD-EPPING (S)	UE	UE

SIGNAL	DESTINATION	INDICATION / CO-ACTING	
CD 36	No.2 PLATFORM (M)	-	2
	No.3 PLATFORM (M)	-	3
	No.2 PLATFORM (S)	2	2
	No.3 PLATFORM (S)	3	3

SIGNAL	DESTINATION	INDICATION	
CD 52	UP SHORE (M)		US
	UP CHATS - EPPING (M)		UC
	UP SHORE (S)	US	US
	UP CHATS - EPPING (S)	UC	UC

SIGNAL	DESTINATION	INDICATION / CO-ACTING	
CD 54	UP SHORE (M)	US	US
	UP CHATS - EPPING (M)	UC	UC
	DOWN CHATS - EPPING (M)	-	DC
	No.4 PLATFORM (M)	4	4
	UP SHORE (S)	US	US
	UP CHATS - EPPING (S)	UC	UC
	DOWN CHATS - EPPING (S)	DC	DC
No.4 PLATFORM (S)	4	4	

JOINS MAP CE 01

JOINS MAP NS 11

SECTION : CHATSWOOD TO EPPING
MAP SET : CHATSWOOD TO LADY GAME DRIVE
SERVICE FACILITY
UPDATED TO : 21 SEPTEMBER 2011

GRADIENT

INFORMATION

CONTROLLED FROM : HOME BUSH CONTROL CENTRE
/ NORTH SHORE PANEL
RADIO AREA CODE : 016 (NORTH SHORE)

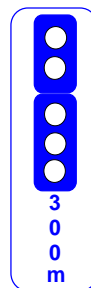
1 IN 40

1 IN 30

1 IN 35

1 IN 37

WHEN
AUTHORISED TO PASS
THIS SIGNAL AT STOP
DRIVERS MUST NOT
PROCEED BEYOND
YARD LIMITS
EXCEPT ON AUTHORITY
OF A SPECIAL
PROCEED AUTHORITY



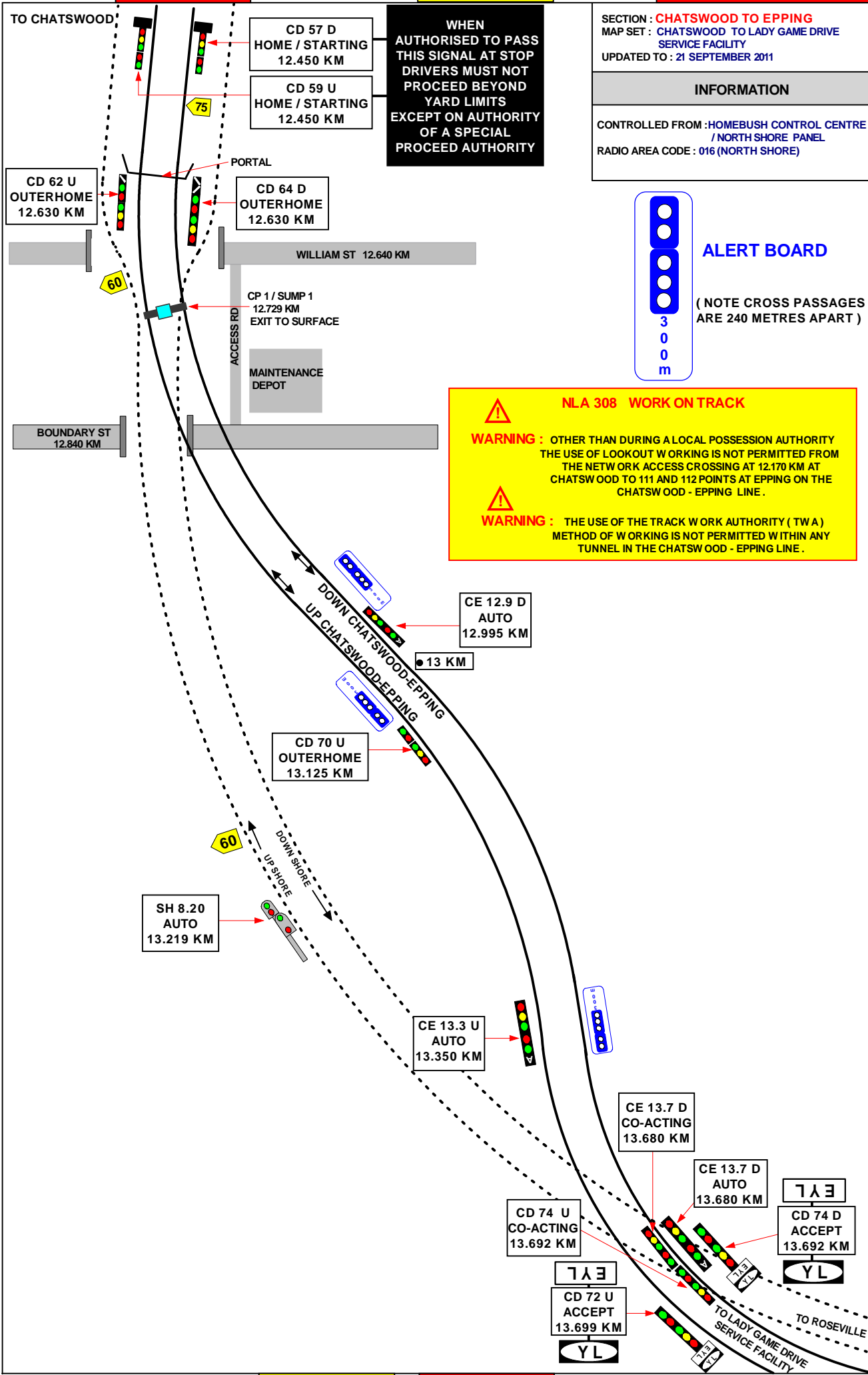
ALERT BOARD

(NOTE CROSS PASSAGES
ARE 240 METRES APART)

NLA 308 WORK ON TRACK

WARNING : OTHER THAN DURING A LOCAL POSSESSION AUTHORITY THE USE OF LOOKOUT WORKING IS NOT PERMITTED FROM THE NETWORK ACCESS CROSSING AT 12.170 KM AT CHATSWOOD TO 111 AND 112 POINTS AT EPPING ON THE CHATSWOOD - EPPING LINE.

WARNING : THE USE OF THE TRACK WORK AUTHORITY (TWA) METHOD OF WORKING IS NOT PERMITTED WITHIN ANY TUNNEL IN THE CHATSWOOD - EPPING LINE.



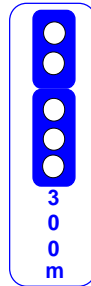
JOINS MAP NS 12

JOINS MAP CE 03

SECTION : CHATSWOOD TO EPPING
MAP SET : LADY GAME DRIVE SERVICE FACILITY
TO NORTH RYDE
UPDATED TO : 23 MARCH 2011

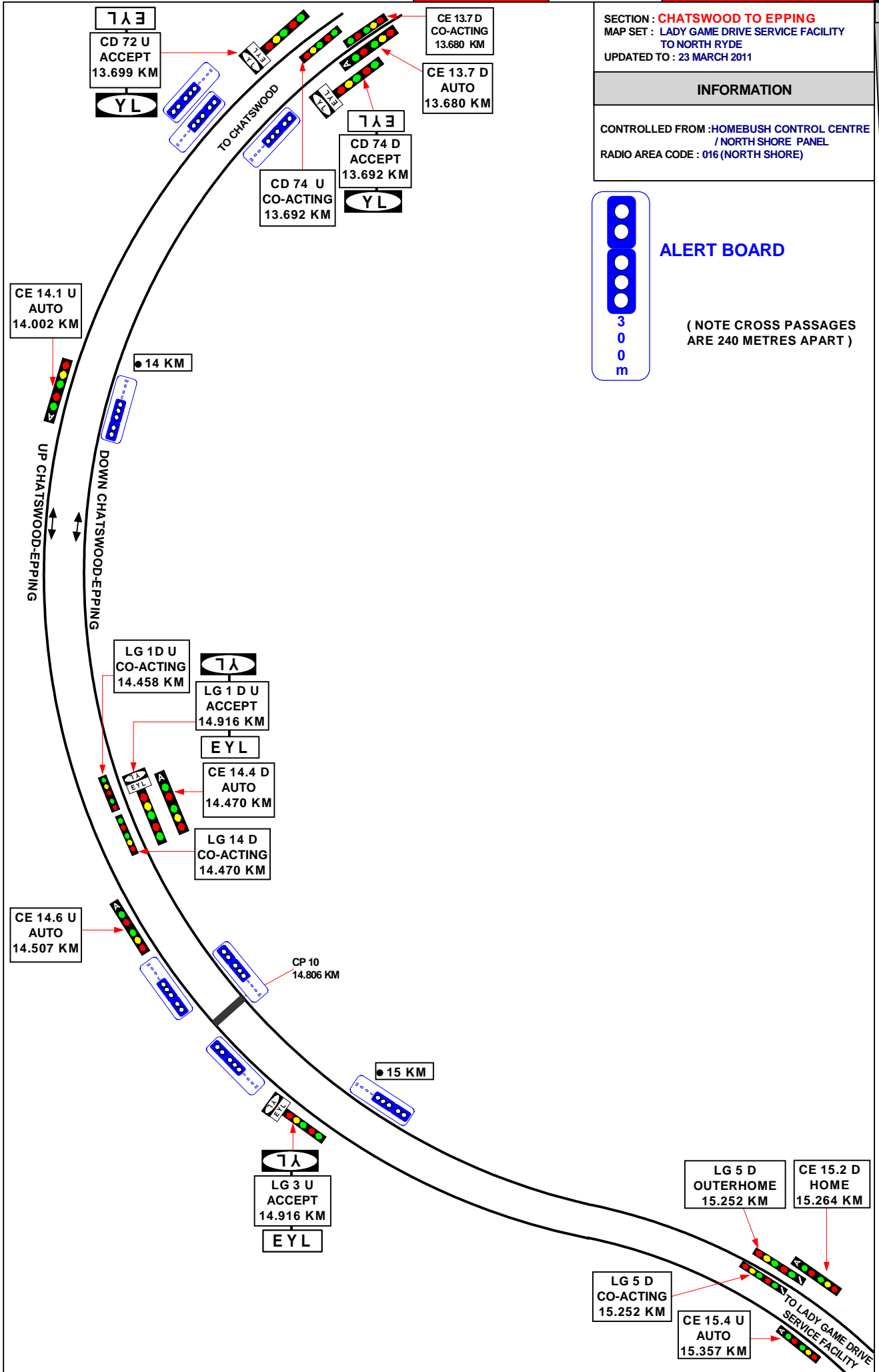
INFORMATION

CONTROLLED FROM : HOME BUSH CONTROL CENTRE
/ NORTH SHORE PANEL
RADIO AREA CODE : 016 (NORTH SHORE)



ALERT BOARD

(NOTE CROSS PASSAGES
ARE 240 METRES APART)



SECTION : CHATSWOOD TO EPPING
 MAP SET : LADY GAME DRIVE SERVICE FACILITY
 TO NORTH RYDE
 UPDATED TO : 19 September 2018

GRADIENT

INFORMATION

CONTROLLED FROM : HOMEBUSH CONTROL CENTRE
 / NORTH SHORE PANEL
 RADIO AREA CODE : 016 (NORTH SHORE)

(NOTE CROSS PASSAGES
 ARE 240 METRES APART)

1 IN 37

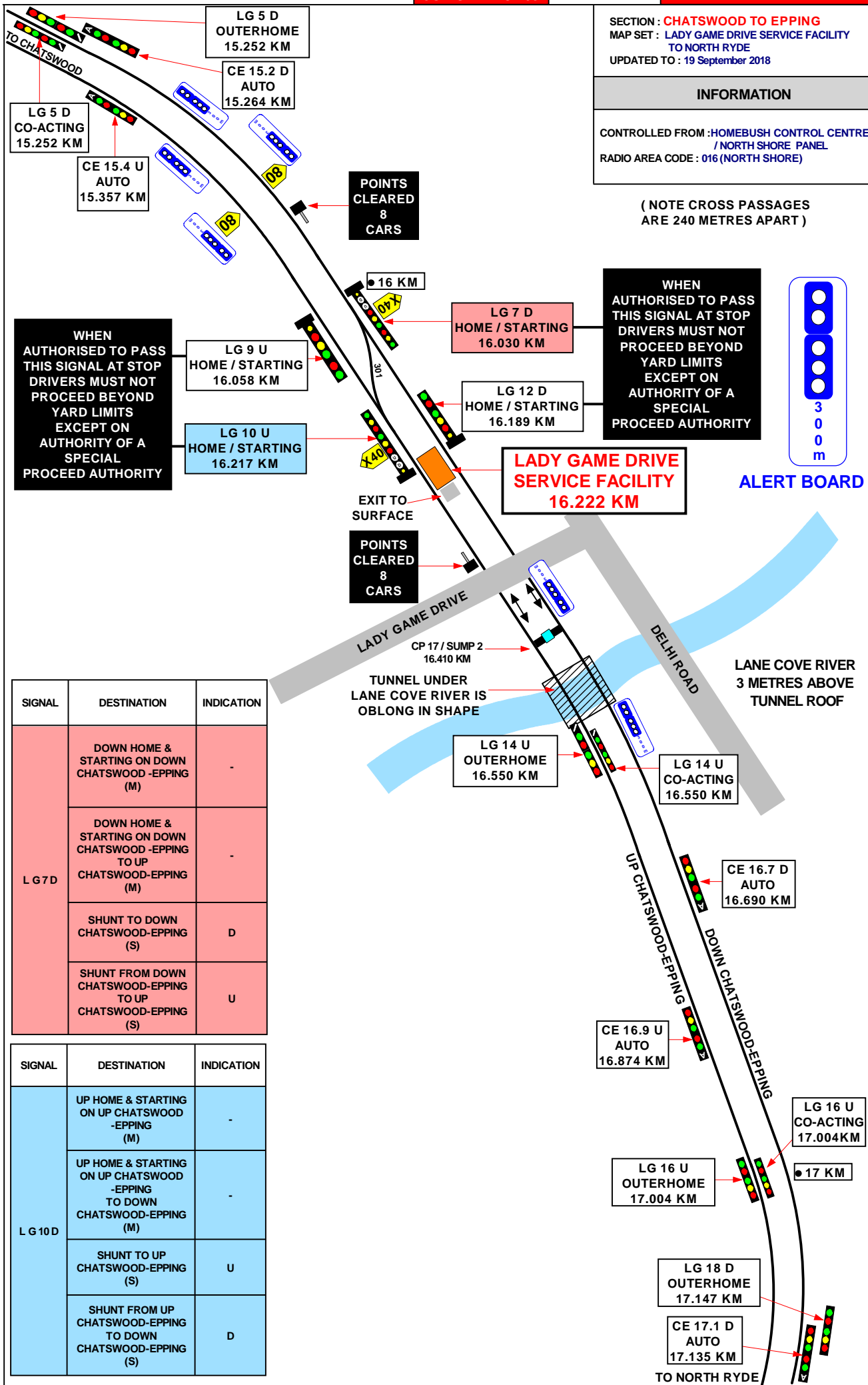
1 IN 56

1 IN 115

1 IN 230

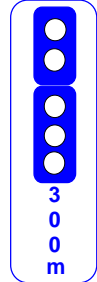
1 IN 72

1 IN 36



WHEN
 AUTHORISED TO PASS
 THIS SIGNAL AT STOP
 DRIVERS MUST NOT
 PROCEED BEYOND
 YARD LIMITS
 EXCEPT ON
 AUTHORITY OF A
 SPECIAL
 PROCEED AUTHORITY

WHEN
 AUTHORISED TO PASS
 THIS SIGNAL AT STOP
 DRIVERS MUST NOT
 PROCEED BEYOND
 YARD LIMITS
 EXCEPT ON
 AUTHORITY OF A
 SPECIAL
 PROCEED AUTHORITY



SIGNAL	DESTINATION	INDICATION
LG 7 D	DOWN HOME & STARTING ON DOWN CHATSWOOD -EPPING (M)	-
	DOWN HOME & STARTING ON DOWN CHATSWOOD -EPPING TO UP CHATSWOOD-EPPING (M)	-
	SHUNT TO DOWN CHATSWOOD-EPPING (S)	D
	SHUNT FROM DOWN CHATSWOOD-EPPING TO UP CHATSWOOD-EPPING (S)	U

SIGNAL	DESTINATION	INDICATION
LG 10 D	UP HOME & STARTING ON UP CHATSWOOD -EPPING (M)	-
	UP HOME & STARTING ON UP CHATSWOOD -EPPING TO DOWN CHATSWOOD-EPPING (M)	-
	SHUNT TO UP CHATSWOOD-EPPING (S)	U
	SHUNT FROM UP CHATSWOOD-EPPING TO DOWN CHATSWOOD-EPPING (S)	D

JOINS MAP CE 04

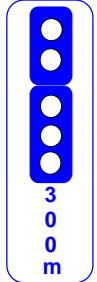
SECTION : CHATSWOOD TO EPPING
MAP SET : LADY GAME DRIVE SERVICE FACILITY
TO NORTH RYDE
UPDATED TO : 19 September 2018

GRADIENT

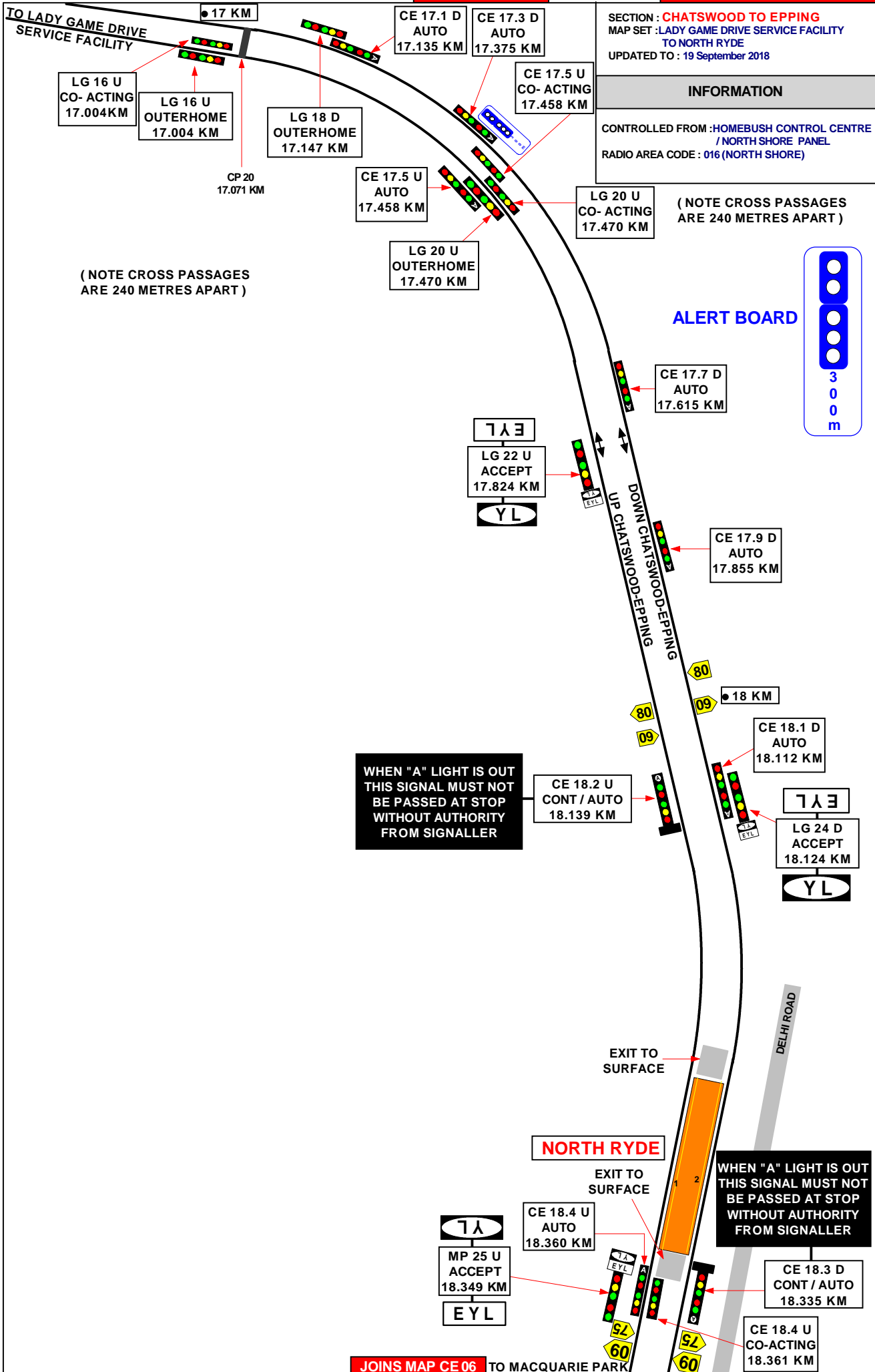
INFORMATION

CONTROLLED FROM : HOMEBUSH CONTROL CENTRE
/ NORTH SHORE PANEL
RADIO AREA CODE : 016 (NORTH SHORE)

(NOTE CROSS PASSAGES
ARE 240 METRES APART)



ALERT BOARD



(NOTE CROSS PASSAGES
ARE 240 METRES APART)

WHEN "A" LIGHT IS OUT
THIS SIGNAL MUST NOT
BE PASSED AT STOP
WITHOUT AUTHORITY
FROM SIGNALLER

WHEN "A" LIGHT IS OUT
THIS SIGNAL MUST NOT
BE PASSED AT STOP
WITHOUT AUTHORITY
FROM SIGNALLER

JOINS MAP CE 06

TO MACQUARIE PARK

1 IN 36

1 IN 72

1 IN 50

JOINS MAP CE 05

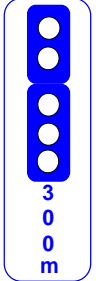
GRADIENT

SECTION : CHATSWOOD TO EPPING
MAP SET : NORTH RYDE TO MACQUARIE PARK
UPDATED TO : 22 SEPTEMBER 2013

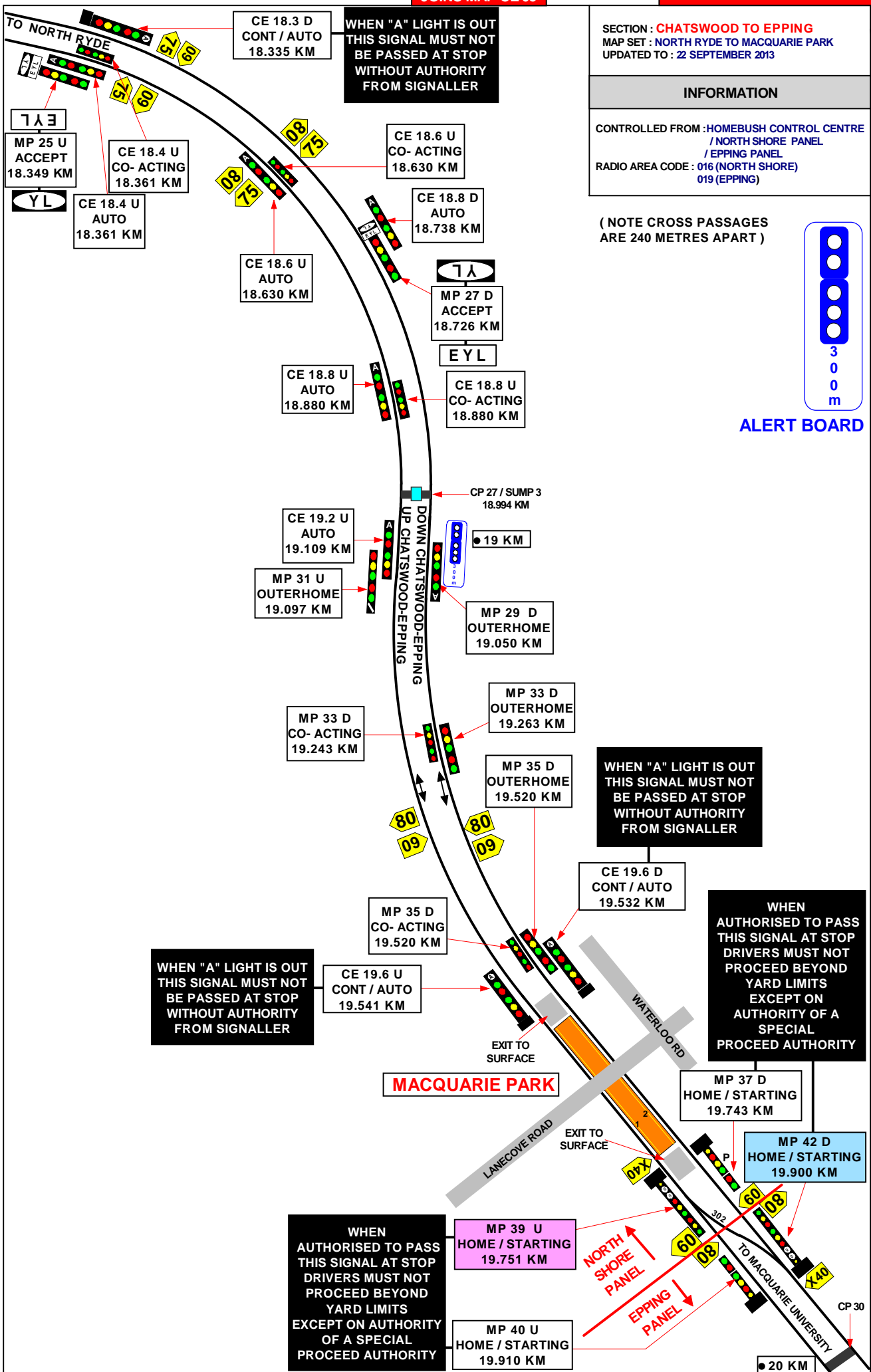
INFORMATION

CONTROLLED FROM : HOME BUSH CONTROL CENTRE
/ NORTH SHORE PANEL
/ EPPING PANEL
RADIO AREA CODE : 016 (NORTH SHORE)
019 (EPPING)

(NOTE CROSS PASSAGES ARE 240 METRES APART)



ALERT BOARD



WHEN "A" LIGHT IS OUT THIS SIGNAL MUST NOT BE PASSED AT STOP WITHOUT AUTHORITY FROM SIGNALLER

WHEN "A" LIGHT IS OUT THIS SIGNAL MUST NOT BE PASSED AT STOP WITHOUT AUTHORITY FROM SIGNALLER

WHEN "A" LIGHT IS OUT THIS SIGNAL MUST NOT BE PASSED AT STOP WITHOUT AUTHORITY FROM SIGNALLER

WHEN AUTHORISED TO PASS THIS SIGNAL AT STOP DRIVERS MUST NOT PROCEED BEYOND YARD LIMITS EXCEPT ON AUTHORITY OF A SPECIAL PROCEED AUTHORITY

WHEN AUTHORISED TO PASS THIS SIGNAL AT STOP DRIVERS MUST NOT PROCEED BEYOND YARD LIMITS EXCEPT ON AUTHORITY OF A SPECIAL PROCEED AUTHORITY

JOINS MAP CE 07

1 IN 50

1 IN 95

1 IN 1000

1 IN 1000

1 IN 47

1 IN 94

E

1 IN 699

SECTION : **CHATSWOOD TO EPPING**
 MAP SET : **NORTH RYDE TO MACQUARIE PARK**
 UPDATED TO : **23 JUNE 2011**

INFORMATION

CONTROLLED FROM : **HOMEBUSH CONTROL CENTRE**
 / **NORTH SHORE PANEL**
 / **EPPING PANEL**
 RADIO AREA CODE : **016 (NORTH SHORE)**
019 (EPPING)

SIGNAL	DESTINATION	INDICATION
MP 39 U	DOWN HOME & STARTING ON UP CHATSWOOD-EPPING (M)	-
	DOWN HOME & STARTING ON UP CHATSWOOD-EPPING TO DOWN CHATSWOOD-EPPING (M)	-
	SHUNT ,DOWN DIERECTION ON UP CHATSWOOD-EPPING (S)	U
	SHUNT FROM UP CHATSWOOD-EPPING TO DOWN CHATSWOOD-EPPING (S)	D

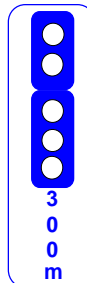
SIGNAL	DESTINATION	INDICATION
MP 42 D	UP HOME & STARTING ON DOWN CHATSWOOD-EPPING (M)	-
	UP HOME & STARTING ON DOWN CHATSWOOD-EPPING TO UP CHATSWOOD-EPPING (M)	-
	SHUNT ,UP DIRECTION ON DOWN CHATSWOOD-EPPING (S)	D
	SHUNT FROM DOWN CHATSWOOD-EPPING TO UP CHATSWOOD-EPPING (S)	U

SECTION : 20.000 KM TO 21.400 KM
MAP SET : CHATSWOOD TO EPPING (ECRL)
UPDATED TO : 23 JUNE 2011

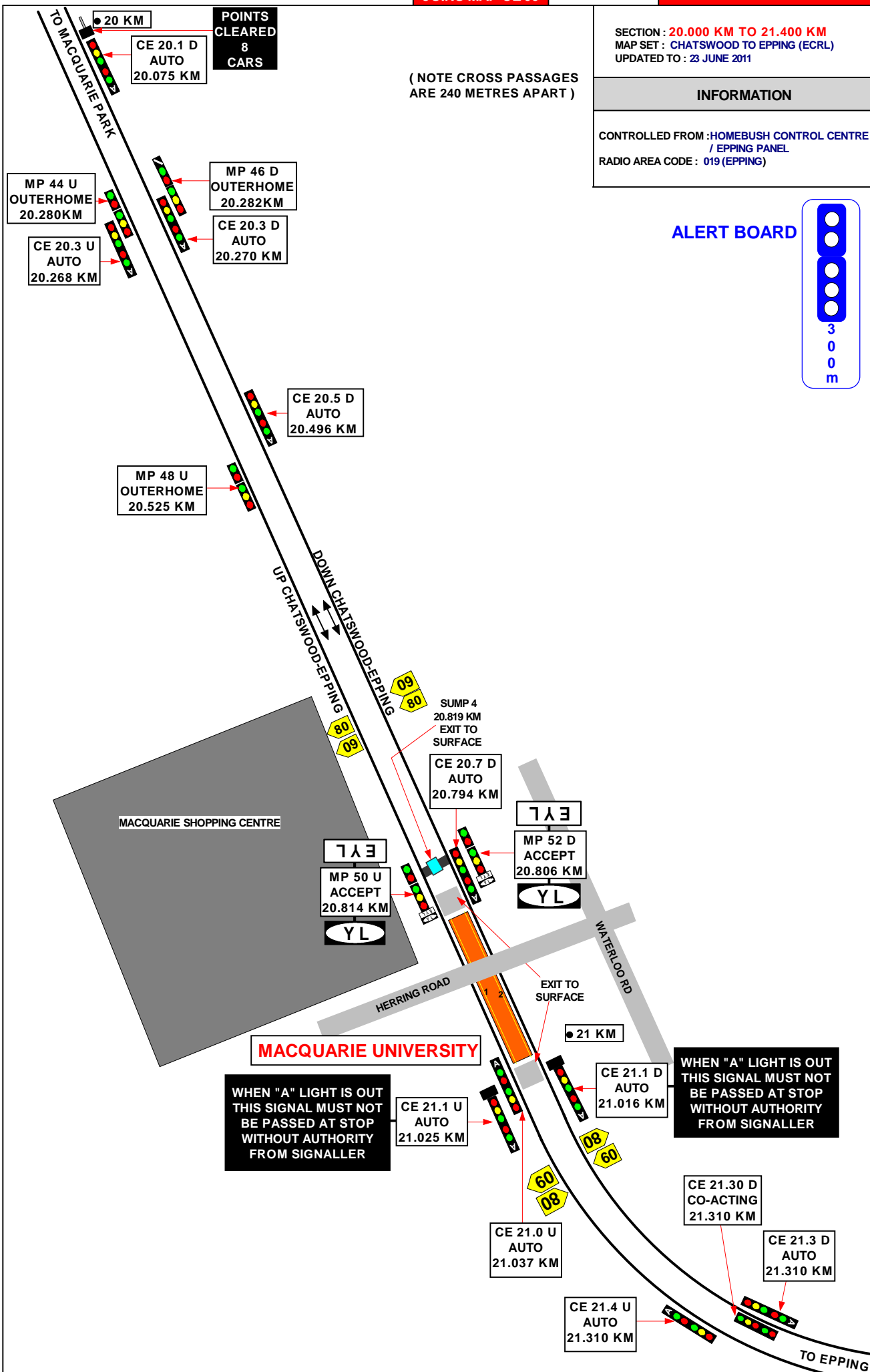
INFORMATION

CONTROLLED FROM : HOME BUSH CONTROL CENTRE
/ EPPING PANEL
RADIO AREA CODE : 019 (EPPING)

ALERT BOARD



(NOTE CROSS PASSAGES ARE 240 METRES APART)



WHEN "A" LIGHT IS OUT THIS SIGNAL MUST NOT BE PASSED AT STOP WITHOUT AUTHORITY FROM SIGNALLER

WHEN "A" LIGHT IS OUT THIS SIGNAL MUST NOT BE PASSED AT STOP WITHOUT AUTHORITY FROM SIGNALLER

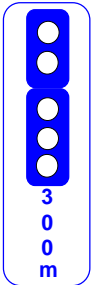
SECTION : CHATSWOOD TO EPPING
MAP SET : MACQUARIE UNI TO EPPING
UPDATED TO : 24 JUNE 2011

GRADIENT

INFORMATION

CONTROLLED FROM : HOME BUSH CONTROL CENTRE
/ EPPING PANEL
RADIO AREA CODE : 019 (EPPING)

ALERT BOARD



1 IN 182

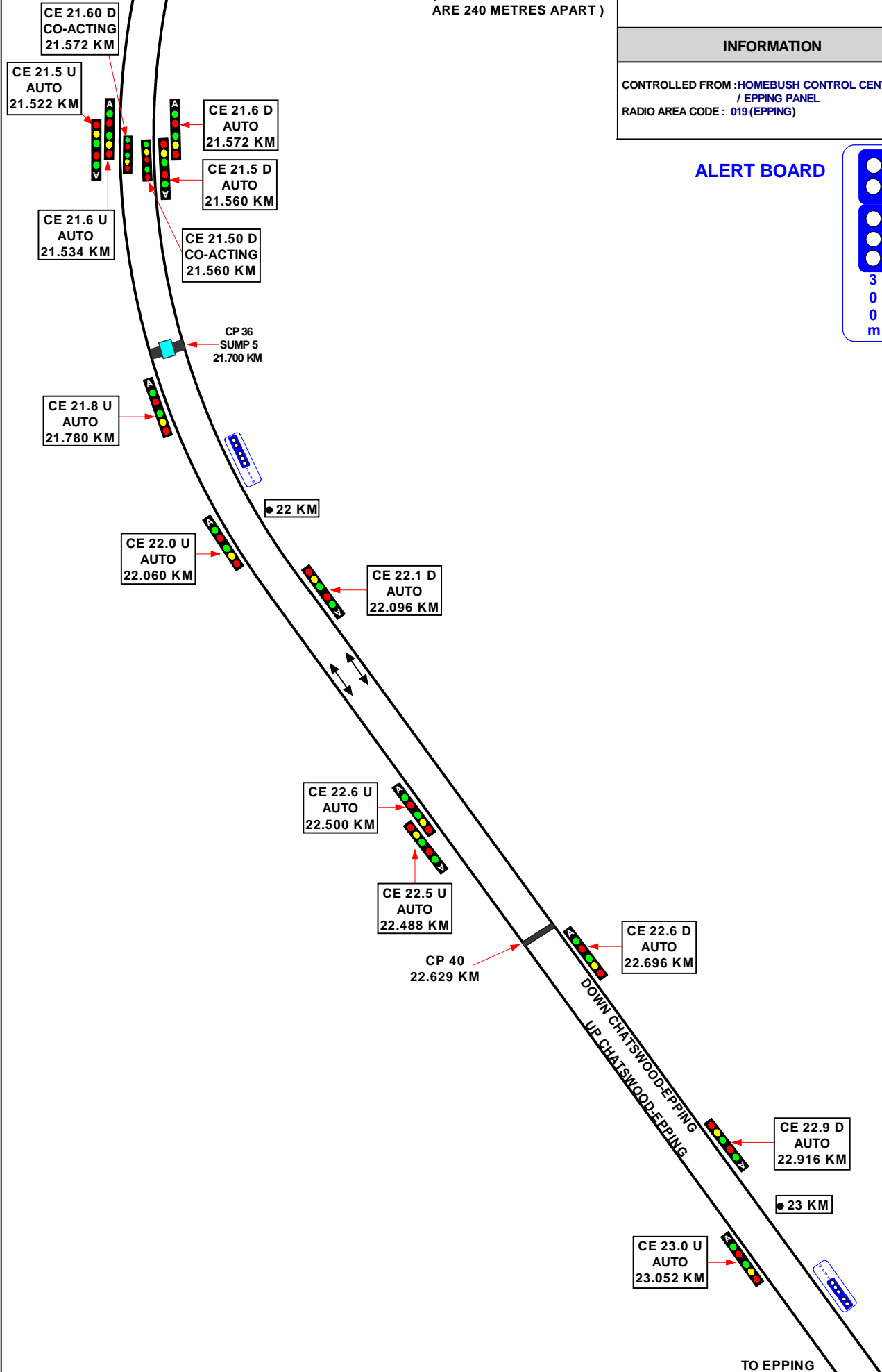
1 IN 364

1 IN 455

1 IN 227

TO MACQUARIE UNIVERSITY

(NOTE CROSS PASSAGES
ARE 240 METRES APART)

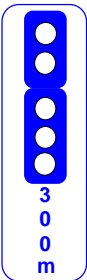


SECTION : CHATSWOOD TO EPPING
MAP SET : MACQUARIE UNI TO EPPING
UPDATED TO : 22 APRIL 2016

INFORMATION

CONTROLLED FROM : HOME BUSH CONTROL CENTRE
/ EPPING PANEL
RADIO AREA CODE : 019 (EPPING)

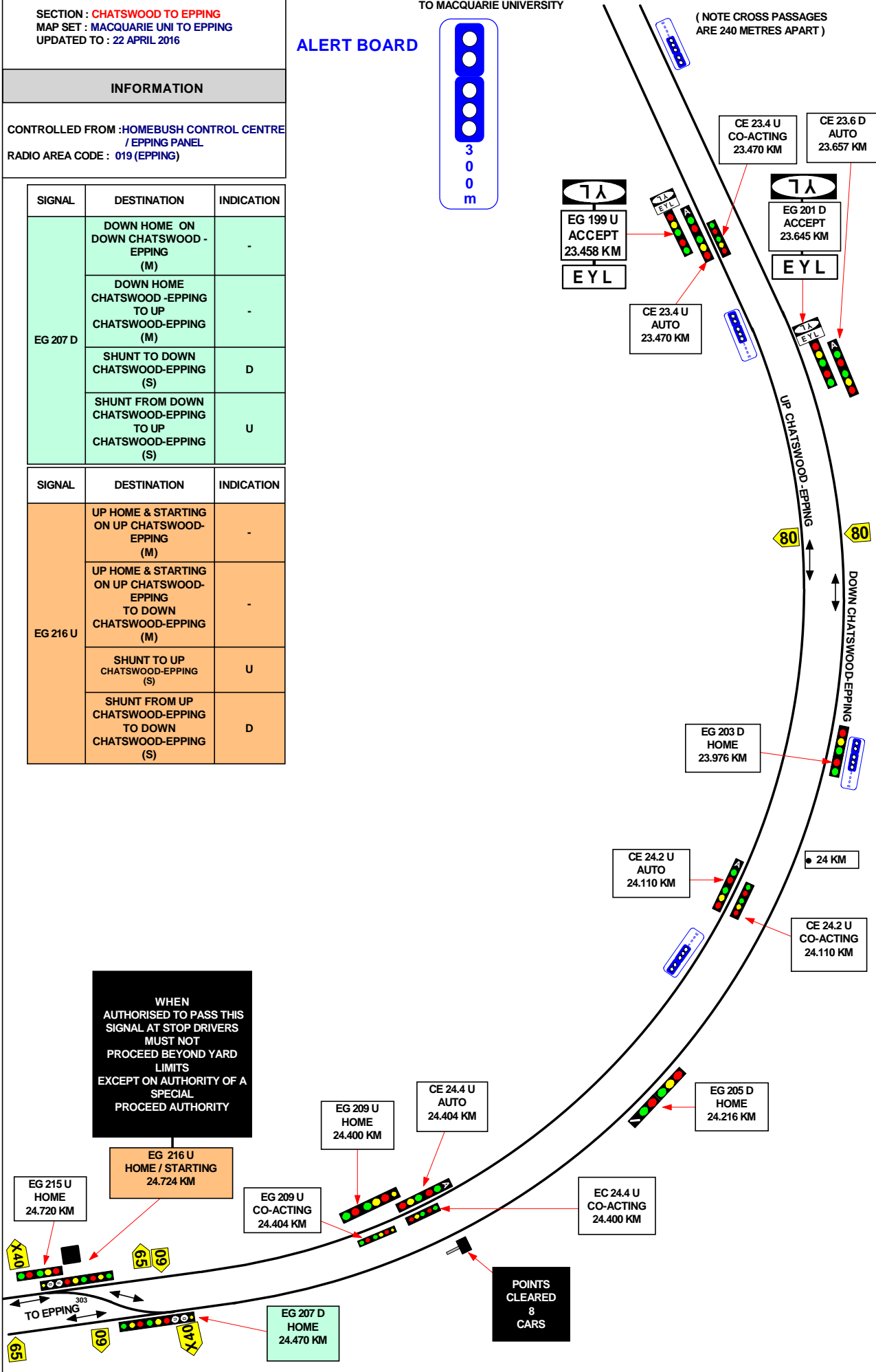
ALERT BOARD



(NOTE CROSS PASSAGES ARE 240 METRES APART)

SIGNAL	DESTINATION	INDICATION
EG 207 D	DOWN HOME ON DOWN CHATSWOOD - EPPING (M)	-
	DOWN HOME CHATSWOOD - EPPING TO UP CHATSWOOD - EPPING (M)	-
	SHUNT TO DOWN CHATSWOOD - EPPING (S)	D
	SHUNT FROM DOWN CHATSWOOD - EPPING TO UP CHATSWOOD - EPPING (S)	U

SIGNAL	DESTINATION	INDICATION
EG 216 U	UP HOME & STARTING ON UP CHATSWOOD - EPPING (M)	-
	UP HOME & STARTING ON UP CHATSWOOD - EPPING TO DOWN CHATSWOOD - EPPING (M)	-
	SHUNT TO UP CHATSWOOD - EPPING (S)	U
	SHUNT FROM UP CHATSWOOD - EPPING TO DOWN CHATSWOOD - EPPING (S)	D



WHEN AUTHORISED TO PASS THIS SIGNAL AT STOP DRIVERS MUST NOT PROCEED BEYOND YARD LIMITS EXCEPT ON AUTHORITY OF A SPECIAL PROCEED AUTHORITY

POINTS CLEARED 8 CARS

1 IN 27

1 IN 61

1 IN 35

SECTION : CHATSWOOD TO EPPING
 MAP SET : MACQUARIE UNI TO EPPING
 UPDATED TO : 18 September 2017

INFORMATION

CONTROLLED FROM : HOME BUSH CONTROL CENTRE / EPPING PANEL
 RADIO AREA CODE : 019 (EPPING)

(NOTE CROSS PASSAGES ARE 240 METRES APART)

SIGNAL	DESTINATION	INDICATION
EG 207 D	DOWN CHATSWOOD - EPPING(M)	-
	UP CHATSWOOD - EPPING (M)	-
	DOWN CHATSWOOD - EPPING(S)	D
	UP CHATSWOOD - EPPING (S)	U

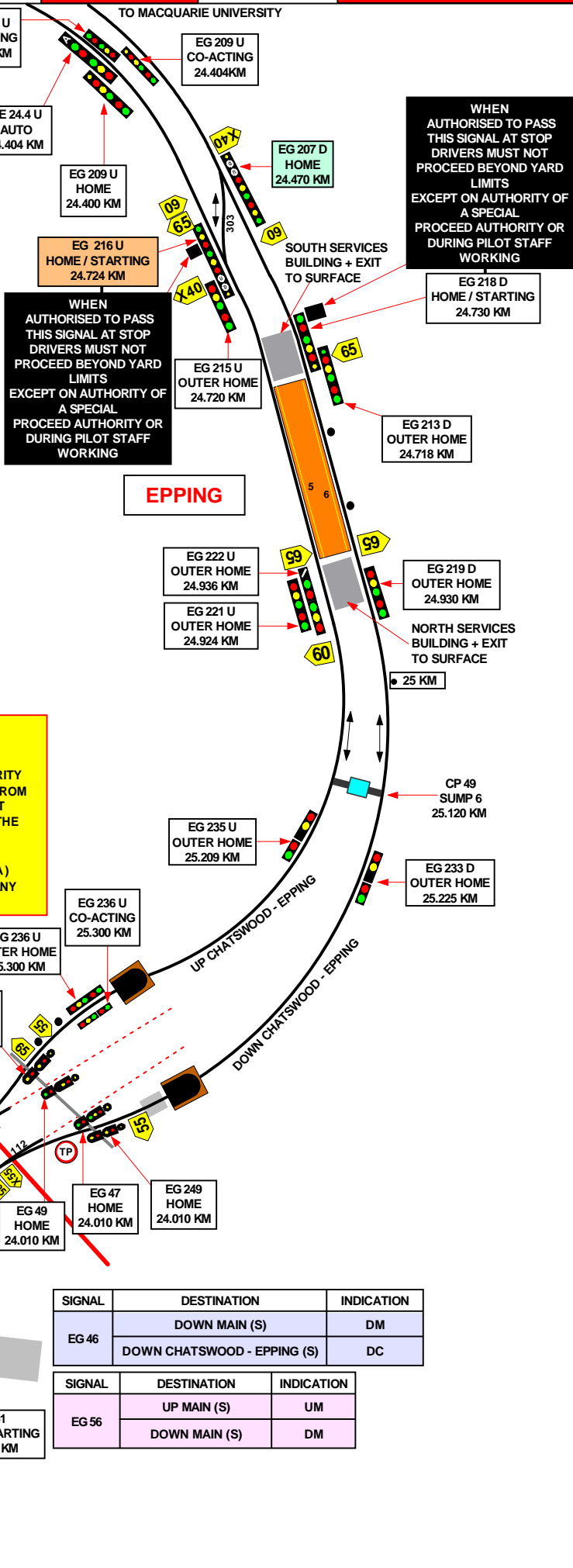
SIGNAL	DESTINATION	INDICATION
EG 216 U	UP CHATSWOOD - EPPING(M)	-
	DOWN CHATSWOOD - EPPING (M)	-
	UP CHATSWOOD - EPPING(S)	U
	DOWN CHATSWOOD - EPPING (S)	D

SIGNAL	DESTINATION	INDICATION
EG 44	UP CHATSWOOD - EPPING (M)	-
	UP MAIN (M)	-
	UP CHATSWOOD - EPPING (S)	UC
	UP MAIN (S)	UM

NLA 308 WORK ON TRACK

WARNING : OTHER THAN DURING A LOCAL POSSESSION AUTHORITY THE USE OF LOOKOUT WORKING IS NOT PERMITTED FROM THE NETWORK ACCESS CROSSING AT 12.170 KM AT CHATSWOOD TO 111 AND 112 POINTS AT EPPING ON THE CHATSWOOD - EPPING LINE.

WARNING : THE USE OF THE TRACK WORK AUTHORITY (TWA) METHOD OF WORKING IS NOT PERMITTED WITHIN ANY TUNNEL IN THE CHATSWOOD - EPPING LINE.



WHEN AUTHORISED TO PASS THIS SIGNAL AT STOP DRIVERS MUST NOT PROCEED BEYOND YARD LIMITS EXCEPT ON AUTHORITY OF A SPECIAL PROCEED AUTHORITY OR DURING PILOT STAFF WORKING

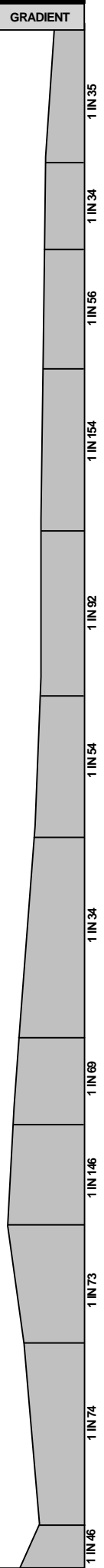
WHEN AUTHORISED TO PASS THIS SIGNAL AT STOP DRIVERS MUST NOT PROCEED BEYOND YARD LIMITS EXCEPT ON AUTHORITY OF A SPECIAL PROCEED AUTHORITY OR DURING PILOT STAFF WORKING

EPPING

MULTI SPAD SIGNAL EG 44

SIGNAL	DESTINATION	INDICATION
EG 46	DOWN MAIN (S)	DM
	DOWN CHATSWOOD - EPPING (S)	DC

SIGNAL	DESTINATION	INDICATION
EG 56	UP MAIN (S)	UM
	DOWN MAIN (S)	DM



SECTION : CHATSWOOD TO EPPING
MAP SET : CHELTENHAM TO EPPING
UPDATED TO : 9 April 2018

GRADIENT

INFORMATION

CONTROLLED FROM : HOMEBUSH CONTROL CENTRE

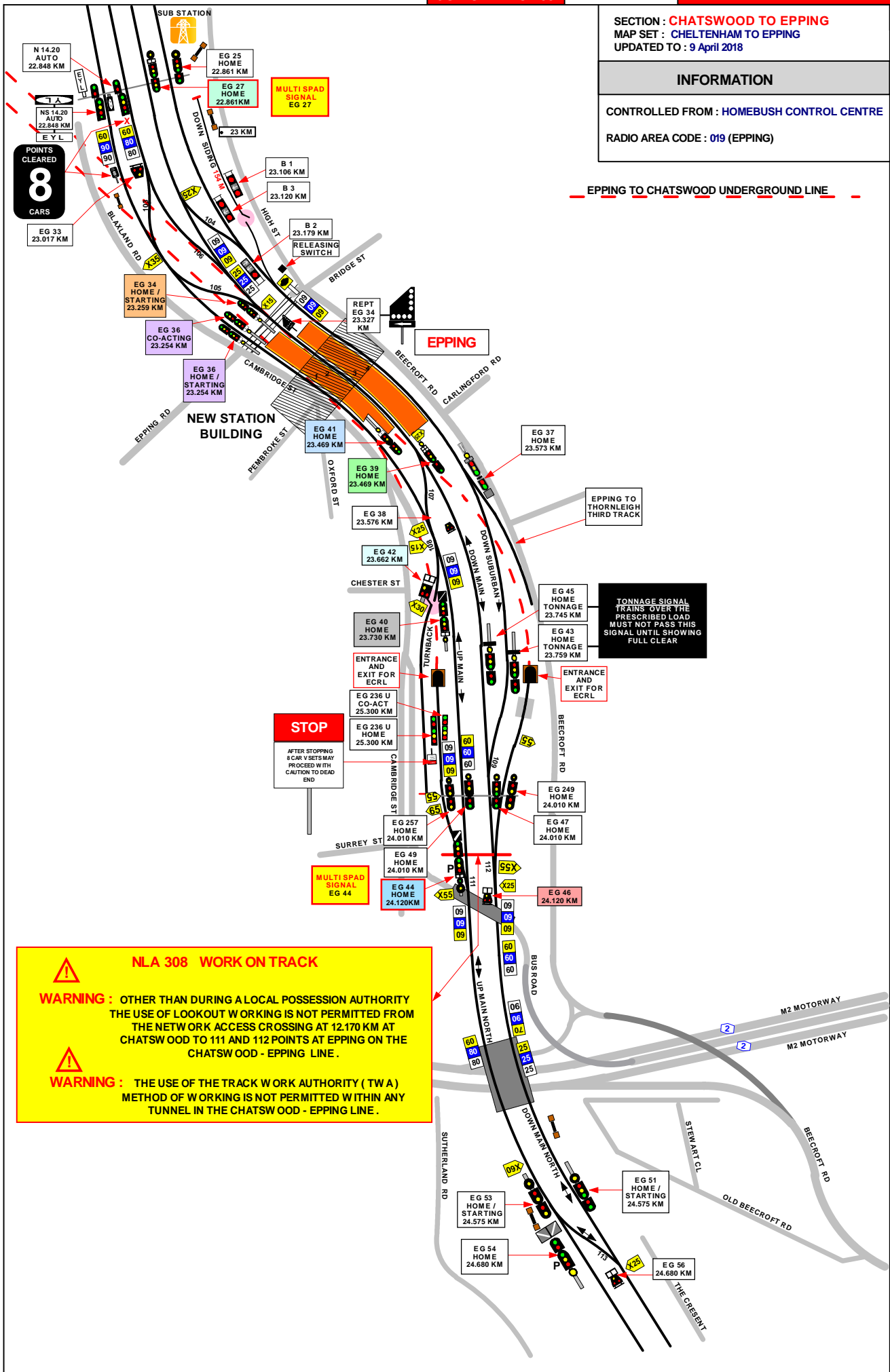
RADIO AREA CODE : 019 (EPPING)

EPPING TO CHATSWOOD UNDERGROUND LINE

1 IN 75

LEVEL

1 IN 40



NLA 308 WORK ON TRACK

WARNING: OTHER THAN DURING A LOCAL POSSESSION AUTHORITY THE USE OF LOOKOUT WORKING IS NOT PERMITTED FROM THE NETWORK ACCESS CROSSING AT 12.170 KM AT CHATSWOOD TO 111 AND 112 POINTS AT EPPING ON THE CHATSWOOD - EPPING LINE.

WARNING: THE USE OF THE TRACK WORK AUTHORITY (TW A) METHOD OF WORKING IS NOT PERMITTED WITHIN ANY TUNNEL IN THE CHATSWOOD - EPPING LINE.

SECTION : **CHATSWOOD TO EPPING**
 MAP SET : **EPPING STATION**
 UPDATED TO : **22 APRIL 2016**

INFORMATION

CONTROLLED FROM : **HOME BUSH CONTROL CENTRE**
 RADIO AREA CODE : **019 (EPPING)**

SIGNAL	DESTINATION	INDICATION
EC 25	DOWN SUBURBAN (M)	-
	DOWN SUBURBAN (S)	-

SIGNAL	DESTINATION	INDICATION
EC 45	DOWN MAIN (M)	-
	DOWN MAIN (S)	-

SIGNAL	DESTINATION	INDICATION
EC 27	DOWN SUBURBAN (M)	-
	DOWN MAIN (M)	-
	DOWN SUBURBAN (S)	DS
	DOWN MAIN (S)	DM

SIGNAL	DESTINATION	INDICATION
EC 46	DOWN MAIN (M)	DM
	DOWN ECRL (S)	DC

SIGNAL	DESTINATION	INDICATION
EC 47	DOWN MAIN (M)	-
	DOWN MAIN (S)	-

SIGNAL	DESTINATION	INDICATION
EG 34	UP SUBURBAN (M)	-
	UP MAIN (M)	-
	UP SUBURBAN (S)	US
	UP MAIN (S)	UM

SIGNAL	DESTINATION	INDICATION
EC 49	UP MAIN (M)	-
	UP MAIN (S)	-

SIGNAL	DESTINATION	INDICATION
EG 36 + EG 36 CO-ACTING	UP SUBURBAN (M)	-
	UP MAIN (M)	-
	UP SUBURBAN (S)	US
	UP MAIN (S)	UM

SIGNAL	DESTINATION	INDICATION
EC 51	DOWN MAIN (M)	-
	DOWN MAIN (S)	-

SIGNAL	DESTINATION	INDICATION
EC 39	DOWN MAIN (M)	-
	DOWN MAIN (S)	DM
	UP MAIN (S)	UM
	TURNBACK SIDING (S)	TS

SIGNAL	DESTINATION	INDICATION
EC 53	DOWN MAIN (M)	-
	DOWN MAIN (S)	-

SIGNAL	DESTINATION	INDICATION
EC 54	UP MAIN (M)	-
	UP MAIN (S)	-

SIGNAL	DESTINATION	INDICATION
EC 40	UP MAIN (M)	-
	DOWN MAIN (M)	-
	UP MAIN (S)	UM
	DOWN MAIN (S)	DM

SIGNAL	DESTINATION	INDICATION
EG 56	UP MAIN (S)	UM
	DOWN MAIN (S)	DM

SIGNAL	DESTINATION	INDICATION
EC 41	UP MAIN (M)	-
	UP MAIN (S)	UM
	TURNBACK SIDING (S)	TS

SIGNAL	DESTINATION	INDICATION
EC 42	UP MAIN (S)	UM
	DOWN MAIN (S)	DM

SIGNAL	DESTINATION	INDICATION
EC 43	UP MAIN (S)	-
	DOWN MAIN (S)	-

SIGNAL	DESTINATION	INDICATION
EG 44	UP ECRL (M)	-
	UP MAIN (M)	-
	UP ECRL (S)	UC
	UP MAIN (S)	UM

NLA 308 WORK ON TRACK

WARNING : OTHER THAN DURING A LOCAL POSSESSION AUTHORITY THE USE OF LOOKOUT WORKING IS NOT PERMITTED FROM THE NETWORK ACCESS CROSSING AT 12.170 KM AT CHATSWOOD TO 111 AND 112 POINTS AT EPPING ON THE CHATSWOOD - EPPING LINE.

WARNING : THE USE OF THE TRACK WORK AUTHORITY (TWA) METHOD OF WORKING IS NOT PERMITTED WITHIN ANY TUNNEL IN THE CHATSWOOD - EPPING LINE.

TONNAGE SIGNAL
 TRAINS OVER THE
 PRESCRIBED LOAD
 MUST NOT PASS THIS
 SIGNAL UNTIL SHOWING
 FULL CLEAR

**WHEN THIS SIGNAL
 IS AT STOP**
 WAIT ONE MINUTE
 AND PROCEED
 CAUTIOUSLY
 TO NEXT SIGNAL

STOP

AFTER STOPPING
 8 CAR V SETS MAY
 PROCEED WITH
 CAUTION TO DEAD
 END