

DRIVERS ROUTE KNOWLEDGE DIAGRAMS

OLYMPIC PARK LINE

FLEMINGTON JUNCTION

OLYMPIC PARK

Effective Date: January 2021

Version: 4.13

Explanatory Notes:

Navigate to your area of interest via the station index or by using links created in Adobe bookmarks.

This document is approved for **route knowledge only**.

Do not use these diagrams for any safety related purpose without validating the information against a controlled source or in the field.

Information in these diagrams is uncontrolled.

Please report any updates to
gjs.support@transport.nsw.gov.au



Copyright: Sydney Trains

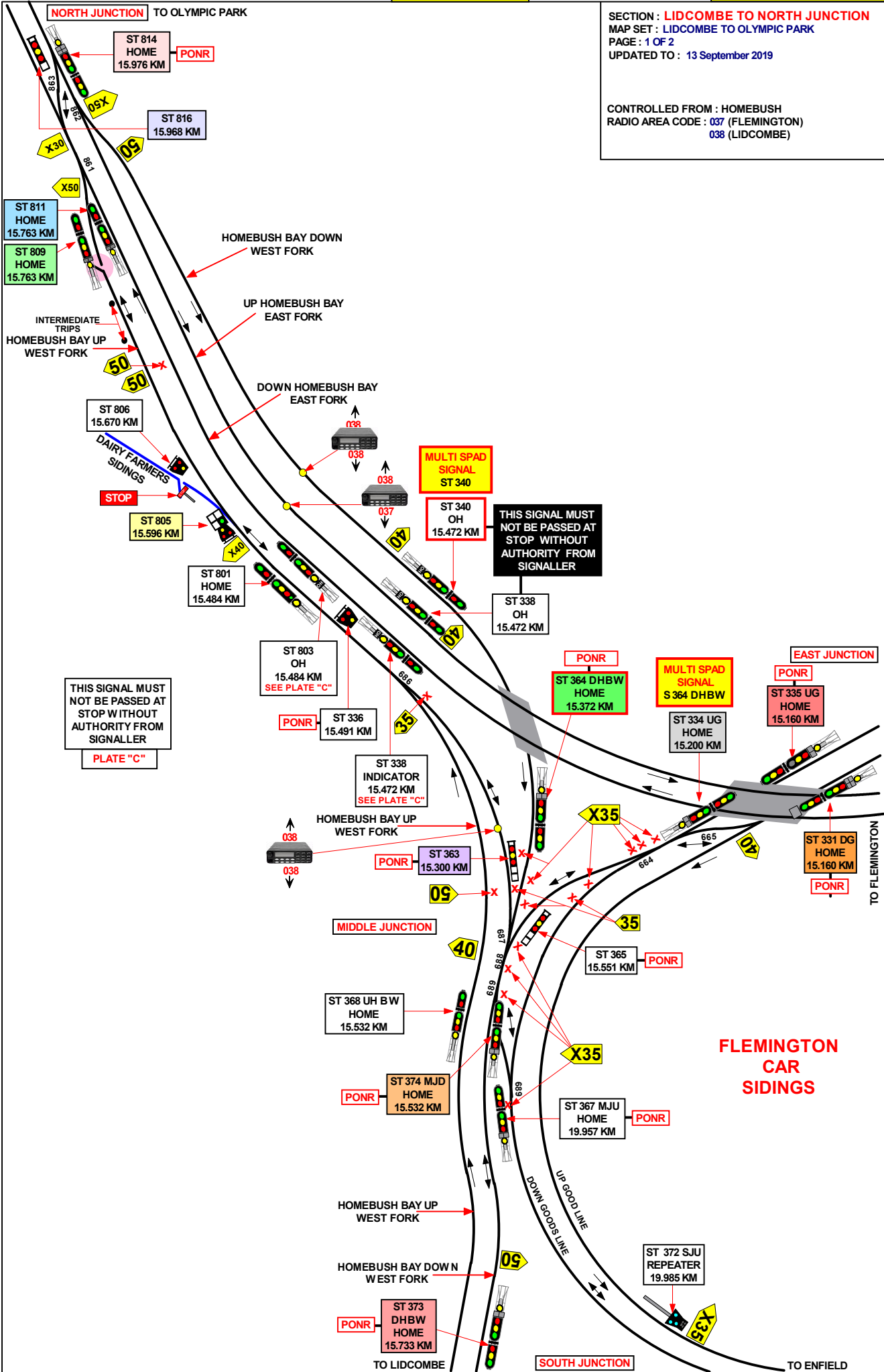
Ownership: Geospatial Services,
Asset Information Systems & Services

Location: TRIM Record No.D2015/566

SECTION : LIDCOMBE TO NORTH JUNCTION
 MAP SET : LIDCOMBE TO OLYMPIC PARK
 PAGE : 1 OF 2
 UPDATED TO : 13 September 2019

CONTROLLED FROM : HOMEBUSH
 RADIO AREA CODE : 037 (FLEMINGTON)
 038 (LIDCOMBE)

GRADIENT	
1 IN 122	
1 IN 364	
1 IN 292	
LEVEL	
1 IN 81	
1 IN 124	
1 IN 277	



SECTION : LIDCOMBE TO NORTH JUNCTION
 MAP SET : LIDCOMBE TO EMU PLAINS
 PAGE : 2 OF 2
 UPDATED TO : 10 January 2021

GRADIENT

SIGNAL	DESTINATION	INDICATION
ST 373 DHBW	DOWN HOMEBUSH BAY WEST FORK (M)	-
	DOWN HOMEBUSH BAY WEST FORK (S)	DH
	SHUTTLE ROAD (M)	-
	SHUTTLE ROAD (S)	SR

SIGNAL	DESTINATION	INDICATION
ST 374 MJD	UP HOMEBUSH BAY WEST FORK (M)	-
	UP HOMEBUSH BAY WEST FORK (S)	UH
	DOWN ENFIELD EAST FORK (M)	-
	DOWN ENFIELD EAST FORK (S)	EF

SIGNAL	DESTINATION	INDICATION
ST 367 MJU	UP HOMEBUSH BAY WEST FORK (M)	-
	UP HOMEBUSH BAY WEST FORK (S)	UH
	DOWN ENFIELD EAST FORK (M)	-
	DOWN ENFIELD EAST FORK (S)	EF

SIGNAL	DESTINATION	INDICATION
ST 378 SJD	UP MAIN (M)	-
	UP MAIN (S)	UM

SIGNAL	DESTINATION	INDICATION
ST 363	DOWN ENFIELD EAST FORK (S)	EF
	DOWN HOMEBUSH BAY WEST FORK (S)	DH

SIGNAL	DESTINATION	INDICATION
ST 365	DOWN ENFIELD EAST FORK (S)	EF
	DOWN HOMEBUSH BAY WEST FORK (S)	DH

SIGNAL	DESTINATION	INDICATION
ST 334 UG	UP FLEMINGTON GOODS (M)	-
	UP FLEMINGTON GOODS (S)	UG
	DOWN FLEMINGTON GOODS (M)	-
	DOWN FLEMINGTON GOODS (S)	DG

SIGNAL	DESTINATION	INDICATION
ST 335 UG	DOWN ENFIELD EAST FORK (M)	-
	DOWN ENFIELD EAST FORK (S)	DE
	DOWN HOMEBUSH BAY WEST FORK (M)	-
	DOWN HOMEBUSH BAY WEST FORK (S)	DH

SIGNAL	DESTINATION	INDICATION
ST 331 DG	UP ENFIELD EAST FORK (M)	-
	UP ENFIELD EAST FORK (S)	UE
	DOWN ENFIELD EAST FORK (M)	E
	DOWN ENFIELD EAST FORK (S)	ED
	DOWN HOMEBUSH BAY WEST FORK (M)	H
	DOWN HOMEBUSH BAY WEST FORK (S)	DH

SIGNAL	DESTINATION	INDICATION
ST 805	DAIRY FARMERS SIDING (S)	DS
	DOWN WEST FORK (S)	DW

SIGNAL	DESTINATION	INDICATION
ST 809	DOWN LOOP (M)	-
	DOWN LOOP (S)	DL
	UP LOOP (S)	UL

SIGNAL	DESTINATION	INDICATION
ST 811	DOWN LOOP (M)	-
	DOWN LOOP (S)	DL
	UP LOOP (S)	UL

SIGNAL	DESTINATION	INDICATION
ST 816	UP WEST FORK	UW

SIGNAL	DESTINATION	INDICATION
ST 814	DOWN WEST FORK (M)	-
	DOWN WEST FORK (S)	DW
	UP EAST FORK (M)	-
	UP EAST FORK (S)	UE
	UP WEST FORK (S)	UW

SIGNAL	DESTINATION	INDICATION
ST 364 DHBW	DOWN HOMEBUSH BAY WEST FORK (M)	-
	DOWN HOMEBUSH BAY WEST FORK (S)	DH
	DOWN ENFIELD EAST FORK (M)	-
	DOWN ENFIELD EAST FORK (S)	EF

NORTH JUNCTION TERMINATING TRAINS (UNDER NORMAL CONDITIONS)		
FROM	TERMINATE AT	THEN GO TO
DOWN TRAINS	NORTH JUNCTION	SHUNT FORWARD CLEAR OF SIGNAL No. ST 814 AND RETURN TO: FLEMINGTON VIA THE UP HOMEBUSH BAY EAST FORK. OR LIDCOMBE OR ENFIELD ON THE UP HOMEBUSH BAY WEST FORK VIA No. 862 POINTS. OR LIDCOMBE OR ENFIELD ON THE DOWN HOMEBUSH BAY WEST FORK.

PONR POINTS OF NO RETURN		
SIGNAL No.	LOCATION	DESTINATIONS
ST 373 DH	HOMEBUSH BAY DOWN WEST FORK	LIDCOMBE OR SPRINT PLATFORM
ST 374 MJD	HOMEBUSH BAY DOWN WEST FORK	OLYMPIC PARK OR UP OR DOWN FLEMINGTON GOODS
ST 367 MJU	DOWN ENFIELD EAST FORK	OLYMPIC PARK OR UP OR DOWN FLEMINGTON GOODS
ST 371 SJD	DOWN GOODS	LIDCOMBE OR UP OR DOWN FLEMINGTON GOODS OR OLYMPIC PARK
ST 363	HOMEBUSH BAY DOWN WEST FORK	LIDCOMBE OR SPRINT PLATFORM OR DOWN ENFIELD EAST FORK
ST 364 DHBW	HOMEBUSH BAY DOWN WEST FORK	LIDCOMBE OR SPRINT PLATFORM OR DOWN ENFIELD EAST FORK
ST 335 UG	UP FLEMINGTON GOODS	LIDCOMBE OR SPRINT PLATFORM OR DOWN ENFIELD EAST FORK
ST 331 DG	DOWN FLEMINGTON GOODS	LIDCOMBE OR SPRINT PLATFORM OR UP ENFIELD FORK
ST 388 S	UP SUBURBAN LINE 15.670 KM	FLEMINGTON MAINTENANCE CENTRE
ST 365	CROSSOVER BETWEEN DOWN ENFIELD EAST FORK AND HOMEBUSH BAY DOWN WEST FORK	LIDCOMBE OR SPRINT PLATFORM OR DOWN ENFIELD EAST FORK
ST 814	UP HOMEBUSH BAY LOOP AT PARRAMATTA ROAD	FLEMINGTON OR SPRINT PLATFORM OR LIDCOMBE OR ENFIELD

HOMEBUSH BAY DOWN WEST FORK

1 IN 122

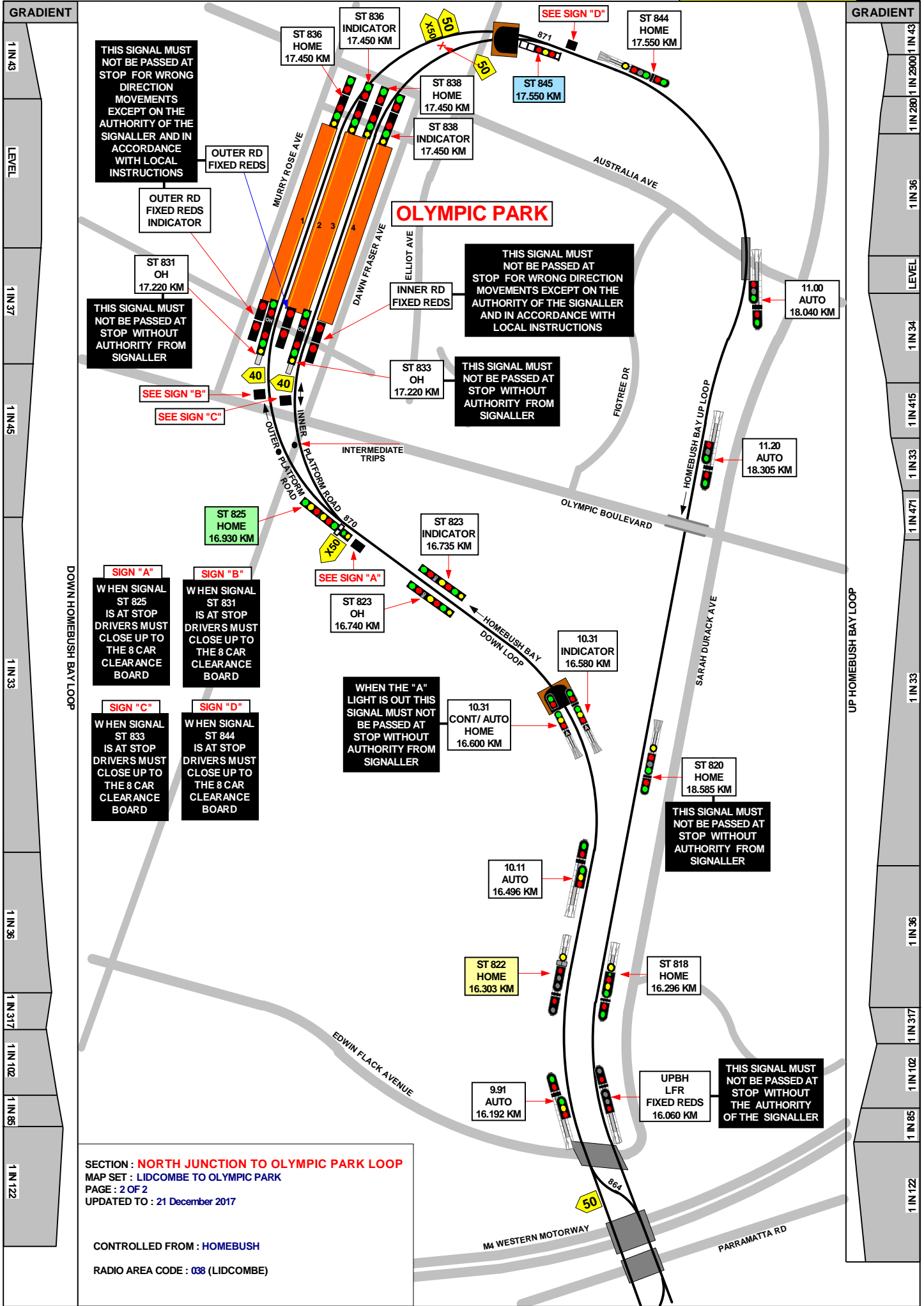
LEVEL

1 IN 48

1 IN 61

1 IN 122

1 IN 277



SECTION : **NORTH JUNCTION TO OLYMPIC PARK LOOP**
 MAP SET : LIDCOMBE TO OLYMPIC PARK
 PAGE : 2 OF 2
 UPDATED TO : 21 December 2017

CONTROLLED FROM : **HOMEBUSH**
 RADIO AREA CODE : **038** (LIDCOMBE)

JOINS MAP OL 01

SECTION : **NORTH JUNCTION TO OLYMPIC PARK LOOP**
 MAP SET : LIDCOMBE TO EMU PLAINS
 PAGE : 2 OF 2
 UPDATED TO : 7 May 2017
 CONTROLLED FROM : HOME BUSH
 RADIO AREA CODE : 038 (LIDCOMBE)

INSTRUCTIONS FOR THE WORKING OF TRAINS DURING SPECIAL EVENTS

DURING SPECIAL EVENTS, ALL TRAINS ARRIVING AT OLYMPIC PARK STATION WILL UNLOAD PASSENGERS ON EITHER No. 1 OR No. 2 PLATFORM, AND LOAD PASSENGERS FROM Nos. 1 AND 4 PLATFORMS.

WHEN A TRAIN ARRIVES ON EITHER THE INNER PLATFORM ROAD OR THE OUTER PLATFORM ROAD AND HAS COME TO A STAND AT No. 2 OR No. 3 PLATFORM, THE GUARD WILL OPEN THE DOORS TO ALLOW THE PASSENGERS TO ALIGHT FROM THE TRAIN.

AFTER ALL REQUIRED PASSENGERS HAVE ALIGHTED FROM THE TRAIN, THE GUARD MUST CLOSE THE DOORS FACING EITHER No. 2 OR No. 3 PLATFORM AND THEN OPEN THE DOORS FACING EITHER No. 1 OR No. 4 PLATFORM (DEPENDING ON WHICH ROAD THE TRAIN IS STANDING) TO ALLOW PASSENGERS TO JOIN THE TRAIN.

AS THE TRAIN IS ARRIVING AND DEPARTING, THE GUARD MUST LOOK ALONG EITHER No. 1 OR No. 4 PLATFORM TO ENSURE THAT NO PASSENGERS ARE TRYING TO GET ON THE TRAIN WHILE IT IS ARRIVING, UNLOADING PASSENGERS, OR DEPARTING.

SHUNTING MOVEMENTS IN THE WRONG RUNNING DIRECTION

FIXED RED STOP SIGNALS ARE PROVIDED TO LIMIT SHUNTING MOVEMENTS IN THE WRONG RUNNING DIRECTION ON THE UP HOME BUSH BAY LOOP AND AT THE UP END OF THE OLYMPIC PARK STATION PLATFORMS.

THESE SIGNALS ARE FITTED WITH INSTRUCTION PLATES THAT ARE INSCRIBED:
 "THIS SIGNAL MUST NOT BE PASSED AT STOP WITHOUT THE AUTHORITY OF THE SIGNALLER".

NORTH JUNCTION TERMINATING TRAINS (UNDER NORMAL CONDITIONS)		
FROM	TERMINATE AT	THEN GO TO
DOWN TRAINS	NORTH JUNCTION	SHUNT FORWARD CLEAR OF SIGNAL No. ST 814 AND RETURN TO: FLEMINGTON VIA THE UP HOME BUSH BAY EAST FORK. OR LIDCOMBE OR ENFIELD ON THE UP HOME BUSH BAY WEST FORK VIA No. 862 POINTS. OR LIDCOMBE OR ENFIELD ON THE DOWN HOME BUSH BAY WEST FORK.

SIGNAL	DESTINATION	INDICATION
ST 816	UP WEST FORK	UW

SIGNAL	DESTINATION	INDICATION
ST 814	DOWN WEST FORK (M)	-
	DOWN WEST FORK (S)	DW
	UP EAST FORK (M)	-
	UP EAST FORK (S)	UE
	UP WEST FORK (S)	UW

SIGNAL	DESTINATION	INDICATION
ST 822	UP HOME BUSH BAY LOOP (S)	UL
	DOWN HOME BUSH BAY LOOP (S)	DL

PONR POINTS OF NO RETURN		
SIGNAL No.	LOCATION	DESTINATIONS
ST 814	UP HOME BUSH BAY LOOP AT PARRAMATTA ROAD	FLEMINGTON OR SPRINT PLATFORM OR LIDCOMBE OR ENFIELD

SIGNAL	DESTINATION	INDICATION
ST 845	INNER ROAD (S)	IR
	OUTER ROAD (S)	OR

SIGNAL	DESTINATION	INDICATION
ST 825	OUTER ROAD (M)	OR
	OUTER ROAD (S)	OR
	INNER ROAD (M)	IR
	INNER ROAD (S)	IR