

DRIVERS ROUTE KNOWLEDGE DIAGRAMS

BANKSTOWN LINE

SYDENHAM

MARRICKVILLE

DULWICH HILL

HURLSTONE PARK

CANTERBURY

CAMPSIE

BELMORE

LAKEMBA

WILEY PARK

PUNCHBOWL

BANKSTOWN

YAGOONA

BIRRONG

Effective Date: April 2024

Version: 4.56

Explanatory Notes:

Navigate to your area of interest via the station index or by using links created in Adobe bookmarks.

This document is approved for **route knowledge only**.

Do not use these diagrams for any safety related purpose without validating the information against a controlled source or in the field.

Information in these diagrams is uncontrolled.

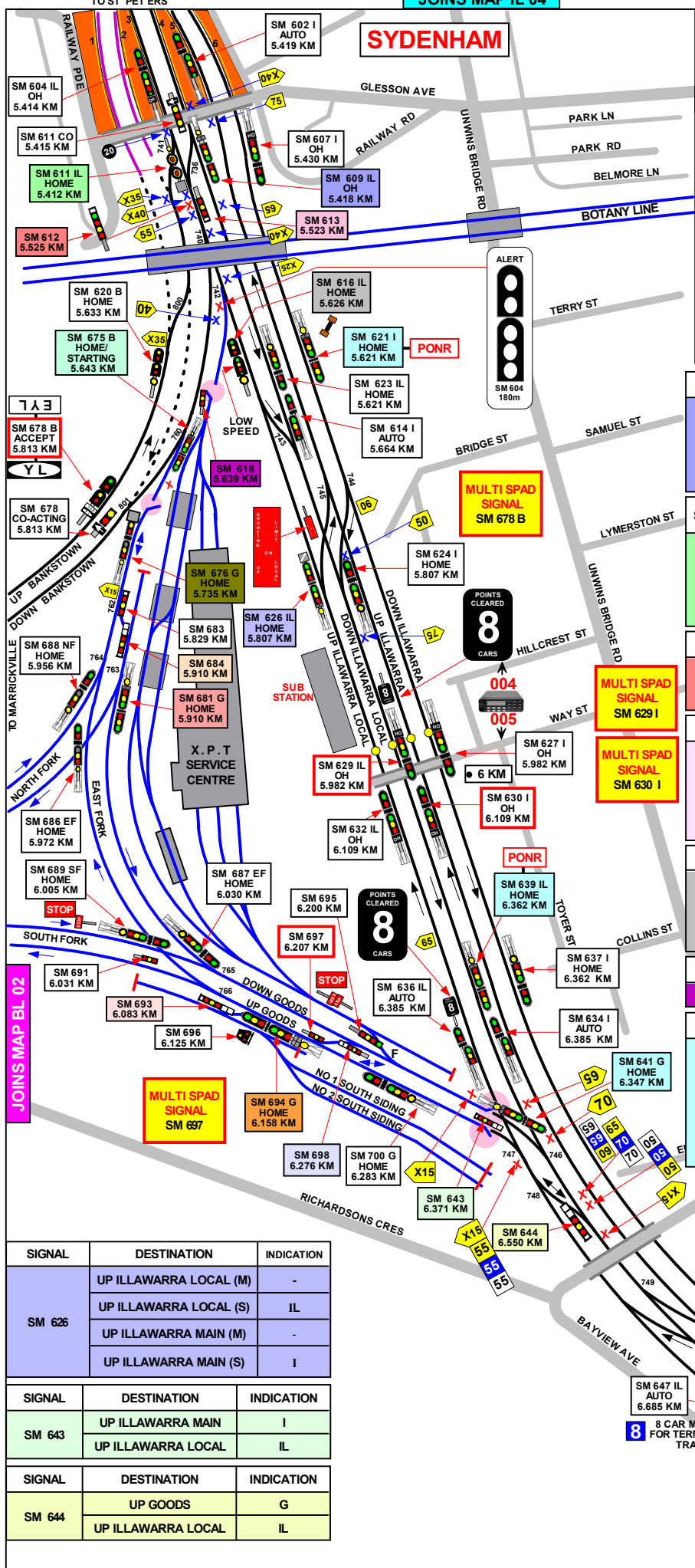
Please report any updates to
gis.support@transport.nsw.gov.au



Copyright: Sydney Trains

Ownership: Geospatial Services

Location: CM Record No.D2015/586



SECTION : SYDENHAM TO REGENTS PARK
MAP SET : SYDENHAM TO MARRICKVILLE
 PAGE: 1 OF 2
 UPDATED TO : 9 October 2023

INFORMATION

SUBURBAN LINES
 CONTROLLED FROM : RAIL OPERATIONS CENTRE

RADIO AREA CODE : 004 (SYDENHAM)
 005 (SYDENHAM)

FREIGHT LINE CONTROLLED FROM
 JUNEE NCSS " SYDNEY 1" BOARD
 PHONE No. 02 6924 9806
EMERGENCY PHONE No. 02 6924 9866

RADIO AREA CODE :
 NATIONAL TRAIN COMMUNICATION SYSTEM (NTCS)

SPECIAL POINTS OF INTEREST
 METRO TRAINS SYDNEY NETWORK

SIGNAL	DESTINATION	INDICATION
SM 609	DOWN ILLAWARRA LOCAL (M)	
	DOWN ILLAWARRA LOCAL (S)	D
	UP ILLAWARRA LOCAL (S)	U
	DOWN BANKSTOWN (M)	

SIGNAL	DESTINATION	INDICATION	CO-ACT IND
SM 611	DOWN ILLAWARRA LOCAL (M)	L	L
	UP ILLAWARRA LOCAL (S)	-	-
	DOWN BANKSTOWN (M)	B	B

SIGNAL	DESTINATION	INDICATION
SM 612	UP ILLAWARRA LOCAL (S) (GREEN LIGHT)	U
	DOWN ILLAWARRA LOCAL (S)	D

SIGNAL	DESTINATION	INDICATION
SM 613	DOWN ILLAWARRA LOCAL (S)	D
	UP ILLAWARRA LOCAL (S) (SHUNTING LIMIT)	U
	XPT MAINTENANCE CENT	X
	DOWN BANKSTOWN (S)	B

SIGNAL	DESTINATION	INDICATION
SM 616	UP ILLAWARRA LOCAL (M)	-
	DOWN ILLAWARRA LOCAL (M)	-
	UP ILLAWARRA LOCAL (S)	-

SIGNAL	DESTINATION	INDICATION
SM 618	UP ILLAWARRA LOCAL (S)	-

SIGNAL	DESTINATION	INDICATION
SM 621 I & SM 639 IL & SM 641 G	DOWN ILLAWARRA (M)	-
	DOWN ILLAWARRA (S)	I
	DOWN ILLAWARRA LOCAL (M)	-
	DOWN ILLAWARRA LOCAL (S)	IL

SIGNAL	DESTINATION	INDICATION
SM 626	UP ILLAWARRA LOCAL (M)	-
	UP ILLAWARRA LOCAL (S)	IL
	UP ILLAWARRA MAIN (M)	-
	UP ILLAWARRA MAIN (S)	I

SIGNAL	DESTINATION	INDICATION
SM 643	UP ILLAWARRA MAIN	I
	UP ILLAWARRA LOCAL	IL

SIGNAL	DESTINATION	INDICATION
SM 644	UP GOODS	G
	UP ILLAWARRA LOCAL	IL

GRADIENT

1 IN 440

1 IN 220

1 IN 367

1 IN 367

LEVEL

1 IN 367

1 IN 286

1 IN 500

SECTION : SYDENHAM TO MARRICKVILLE

SYDENHAM TO TEMPE

MAP SET : SYDENHAM TO REGENTS PARK

PAGE : 2 OF 2

UPDATED TO : 9 April 2024

INFORMATION

SUBURBAN LINES

CONTROLLED FROM : RAIL OPERATIONS CENTRE

RADIO AREA CODE : 004 (SYDENHAM)
005 (SYDENHAM)

FREIGHT LINE CONTROLLED FROM

JUNEE NCCS " SYDNEY 1" BOARD

PHONE No. 02 6924 9806

EMERGENCY PHONE No. 02 6924 9866

RADIO AREA CODE :

NATIONAL TRAIN COMMUNICATION SYSTEM (NTCS)

APPENDICES

PLEASE SEE APPENDICES FOR POINTS OF NO RETURN, TERMINATING MOVEMENTS AND SIDING LENGTHS

SIGNAL	DESTINATION	INDICATION
SM 648 IL	UP GOODS (M)	-
	UP GOODS (S)	G
	UP ILLAWARRA LOCAL (M)	-
	UP ILLAWARRA LOCAL (S)	IL

SIGNAL	DESTINATION	INDICATION
SM 650 I	UP GOODS (M)	G
	UP GOODS (S)	G
	UP ILLAWARRA LOCAL (M)	IL
	UP ILLAWARRA LOCAL (S)	IL
	UP ILLAWARRA (M)	-
	UP ILLAWARRA (S)	I

SIGNAL	DESTINATION	INDICATION
SM 675 B	DOWN GOODS (M)	-
	DOWN GOODS (S)	G
	DOWN BANKSTOWN (M)	-
	DOWN BANKSTOWN (S)	B

SIGNAL	DESTINATION	INDICATION
SM 676	UP ILLAWARRA LOCAL (S)	-
	UP ILLAWARRA LOCAL (M)	U
	DOWN ILLAWARRA LOCAL (M)	D

SIGNAL	DESTINATION	INDICATION
SM 681 G	DOWN EAST FORK (M)	-
	DOWN EAST FORK (S)	EF
	DOWN NORTH FORK (M)	-
	DOWN NORTH FORK (S)	NF

SIGNAL	DESTINATION	INDICATION
SM 684	GOODS LINE	G
	NORTH SHUNTING NECK	N

SIGNAL	DESTINATION	INDICATION
SM 693	UP GOODS	UG
	SIDING	S

SIGNAL	DESTINATION	INDICATION
SM 694 G	UP SHUNTING NECK (S)	SN
	UP SOUTH FORK (M)	-
	UP SOUTH FORK (S)	SF
	UP EAST FORK (M)	-
	UP EAST FORK (S)	EF

SIGNAL	DESTINATION	INDICATION
SM 698	UP GOODS	UG
	DOWN GOODS	DG

PROPELLING MOVEMENTS	
FROM	TO
CLEAR OF No. 775 CROSSOVER	CLEAR OF No. 770 CROSSOVER
CLEAR OF No. 770 CROSSOVER	CLEAR OF No. 775 CROSSOVER

THESE PROPELLING MOVEMENTS ARE FOR NON-ELECTRIC ROLLING STOCK ONLY AND MUST BE CARRIED OUT AS SHOWN IN THE INSTRUCTIONS IN NTR 424/ OSP 15 IN THE NETWORK RULES AND OPERATORS SPECIFIC PROCEDURES MANUALS

SELF-PROPELLED DIESEL TRAINS MAY TERMINATE ON		
FROM	TERMINATE AT	THEN GO TO
	DOWN EAST FORK	RETURN TO THE UP NORTH FORK VIA No. 762 POINTS.
	DOWN GOODS LINE	RETURN TO THE UP SOUTH FORK VIA No. 770 POINTS.
	DOWN ILLAWARRA LOCAL LINE AT SIGNAL No. SM 644	RETURN TO EITHER THE UP NORTH FORK VIA Nos. 775 AND 773 POINTS OR THE DOWN SOUTH FORK VIA No. 775 POINTS

SECTION : SYDENHAM TO MARRICKVILLE

SYDENHAM TO TEMPE

MAP SET : SYDENHAM TO REGENTS PARK

PAGE : 1 OF 2

UPDATED TO : 9 April 2024

INFORMATION

SUBURBAN LINES

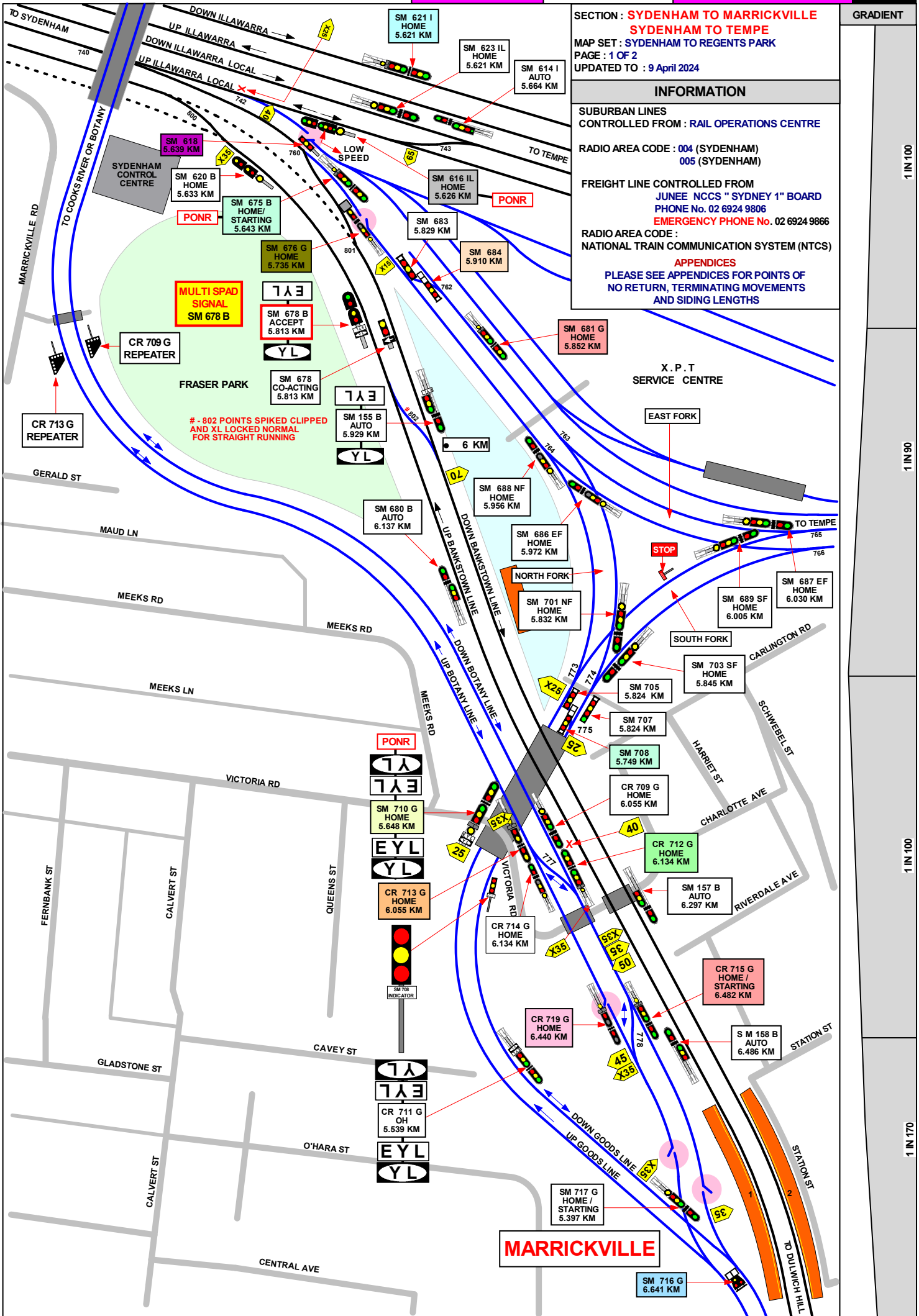
CONTROLLED FROM : RAIL OPERATIONS CENTRE

RADIO AREA CODE : 004 (SYDENHAM)
005 (SYDENHAM)

FREIGHT LINE CONTROLLED FROM
JUNEE NCCS " SYDNEY 1" BOARD
PHONE No. 02 6924 9806
EMERGENCY PHONE No. 02 6924 9866

RADIO AREA CODE :
NATIONAL TRAIN COMMUNICATION SYSTEM (NTCS)

APPENDICES
PLEASE SEE APPENDICES FOR POINTS OF
NO RETURN, TERMINATING MOVEMENTS
AND SIDING LENGTHS



1 IN 100

1 IN 90

1 IN 100

1 IN 170

SECTION : **SYDENHAM TO MARRICKVILLE**
SYDENHAM TO TEMPE
 MAP SET : SYDENHAM TO REGENTS PARK
 PAGE : 2 OF 2
 UPDATED TO : 9 April 2024

INFORMATION

SUBURBAN LINES
 CONTROLLED FROM : RAIL OPERATIONS CENTRE
 RADIO AREA CODE : 004 (SYDENHAM)
 057 (SYDENHAM)
 FREIGHT LINE CONTROLLED FROM
 JUNE NCCS " SYDNEY 1" BOARD
 PHONE No. 02 6924 9806
EMERGENCY PHONE No. 02 6924 9866
 RADIO AREA CODE :
 NATIONAL TRAIN COMMUNICATION SYSTEM (NTCS)

SIGNAL	DESTINATION	INDICATION
SM 684	GOODS LINE	G
	NORTH SHUNTING NECK	N

SIGNAL	DESTINATION	INDICATION
SM 681 G	DOWN EAST FORK (M)	-
	DOWN EAST FORK (S)	EF
	DOWN NORTH FORK (M)	-
	DOWN NORTH FORK (S)	NF

SIGNAL	DESTINATION	INDICATION
SM 710 G	UP NORTH FORK (M)	-
	UP NORTH FORK (S)	NF
	UP SOUTH FORK (M)	-
	UP SOUTH FORK (S)	SF

SIGNAL	DESTINATION	INDICATION
SM 708	UP NORTH FORK	UN
	DOWN SOUTH FORK	DS
	UP SOUTH FORK	US

SIGNAL	DESTINATION	INDICATION
SM 712 G	UP BOTANY (M)	-
	UP BOTANY (S)	UB
	DOWN BOTANY (M)	-
	DOWN BOTANY (S)	DB

SIGNAL	DESTINATION	INDICATION
SM 713 G	DOWN BOTANY (M)	-
	DOWN BOTANY (S)	DB
	UP BOTANY (S)	UB

SIGNAL	DESTINATION	INDICATION
SM 715 G	DOWN GOODS (M)	-
	DOWN GOODS (S)	DG
	UP GOODS (S)	UG

SIGNAL	DESTINATION	INDICATION
SM 716 G	DOWN GOODS (S)	DG
	DOWN BOTANY (S)	DB

SIGNAL	DESTINATION	INDICATION
SM 719 G	UP GOODS (S)	UG

SIGNAL	DESTINATION	INDICATION
CR 712	UP BOTANY (M)	---
	UP BOTANY (S)	UB
	DOWN BOTANY (M)	----
	DOWN BOTANY (S)	DB

SIGNAL	DESTINATION	INDICATION
CR 713	DOWN BOTANY (M)	----
	DOWN BOTANY (S)	DB
	UP BOTANY (S)	UB

SIGNAL	DESTINATION	INDICATION
CR 715	DOWN GOODS (M)	----
	DOWN GOODS (S)	DG
	UP GOODS (S)	UG

SIGNAL	DESTINATION	INDICATION
CR 719	UP GOODS (S)	UG

MARRICKVILLE

SECTION : **MARRICKVILLE TO DULWICH HILL**
MAP SET : SYDENHAM TO REGENTS PARK
UPDATED TO : 9 April 2024

GRADIENT

INFORMATION

SUBURBAN LINES
CONTROLLED FROM : RAIL OPERATIONS CENTRE

RADIO AREA CODE : 004 (SYDENHAM)
057 (BANKSTOWN)

FREIGHT LINE CONTROLLED FROM
JUNEE NCCS " SYDNEY 1" BOARD
PHONE No. 02 6924 9806
EMERGENCY PHONE No. 02 6924 9866

RADIO AREA CODE :
NATIONAL TRAIN COMMUNICATION SYSTEM (NTCS)

SPECIAL POINTS OF INTEREST

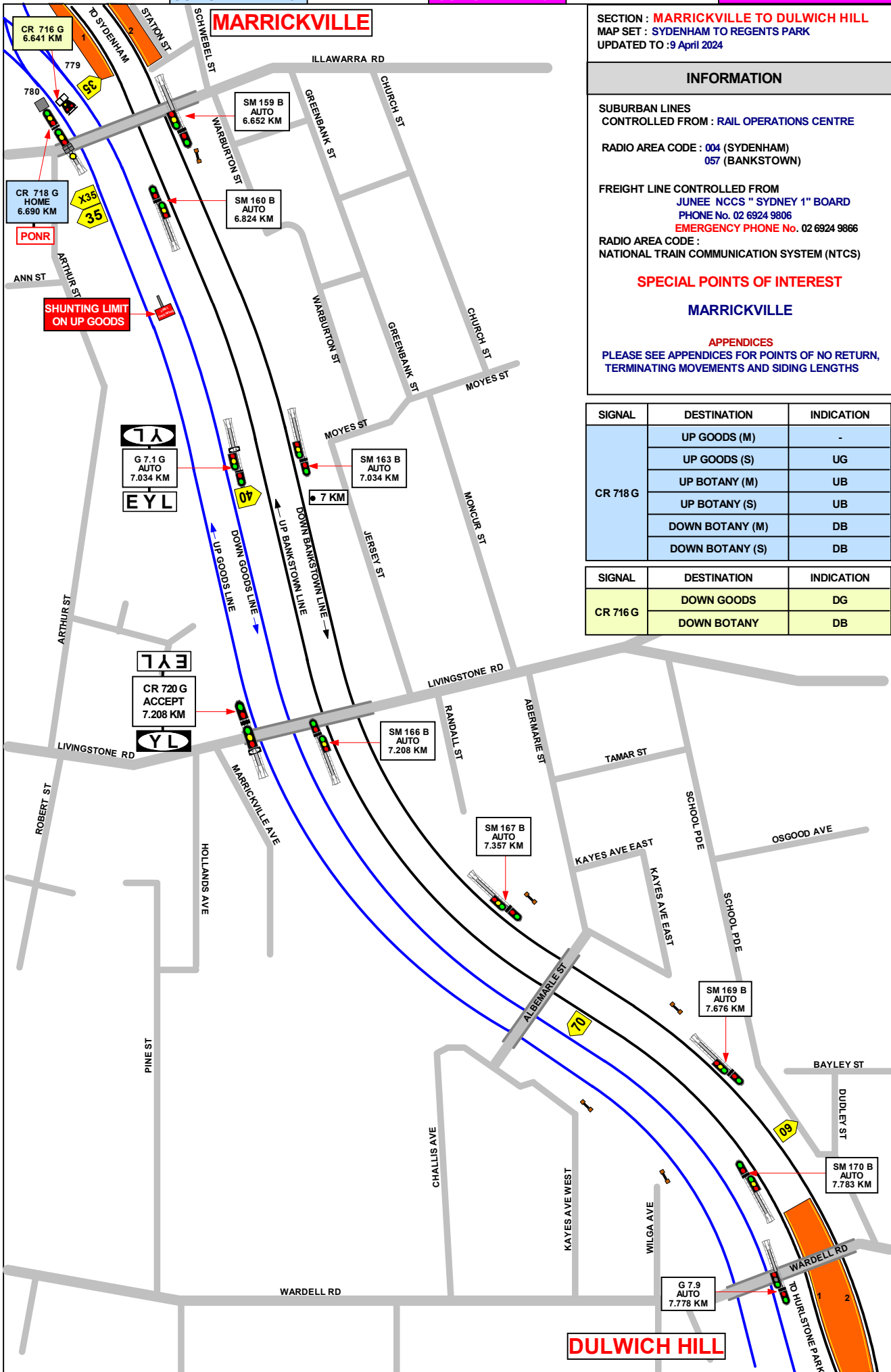
MARRICKVILLE

APPENDICES

PLEASE SEE APPENDICES FOR POINTS OF NO RETURN,
TERMINATING MOVEMENTS AND SIDING LENGTHS

SIGNAL	DESTINATION	INDICATION
CR 718 G	UP GOODS (M)	-
	UP GOODS (S)	UG
	UP BOTANY (M)	UB
	UP BOTANY (S)	UB
	DOWN BOTANY (M)	DB

SIGNAL	DESTINATION	INDICATION
CR 716 G	DOWN GOODS	DG
	DOWN BOTANY	DB



DULWICH HILL

1 IN 170

1 IN 100

1 IN 110

1 IN 100

1 IN 110

1 IN 1000

LEVEL

SECTION : **HURLSTONE PARK TO DULWICH HILL**
 MAP SET : SYDENHAM TO REGENTS PARK
 UPDATED TO : 9 April 2024

GRADIENT

INFORMATION

SUBURBAN LINES
 CONTROLLED FROM : RAIL OPERATIONS CENTRE

RADIO AREA CODE : 057 (SYDENHAM)

FREIGHT LINE CONTROLLED FROM
 JUNEE NCCS " SYDNEY 1" BOARD
 PHONE No. 02 6924 9806
 EMERGENCY PHONE No. 02 6924 9866

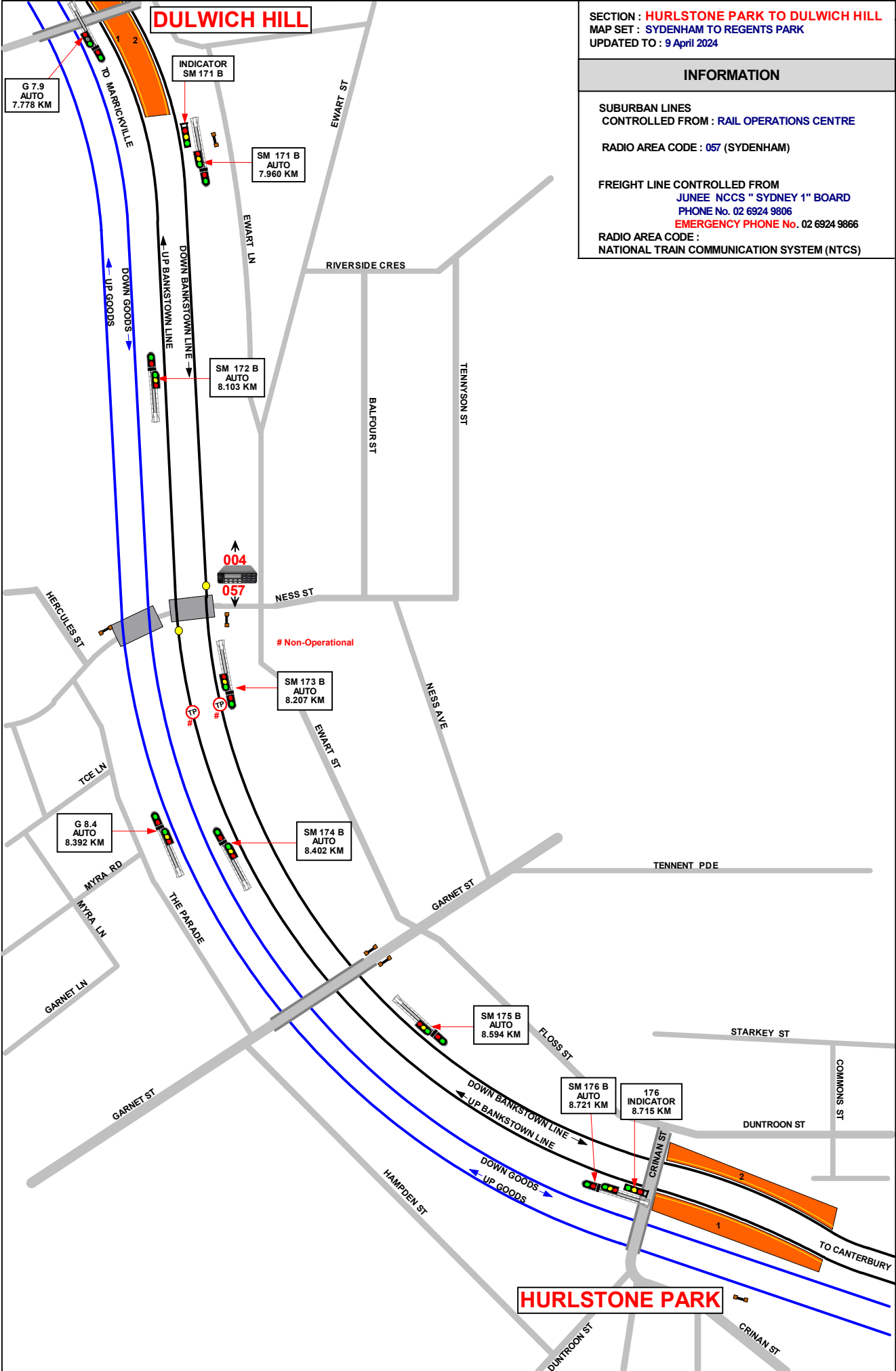
RADIO AREA CODE :
 NATIONAL TRAIN COMMUNICATION SYSTEM (NTCS)

LEVEL

1 IN 425

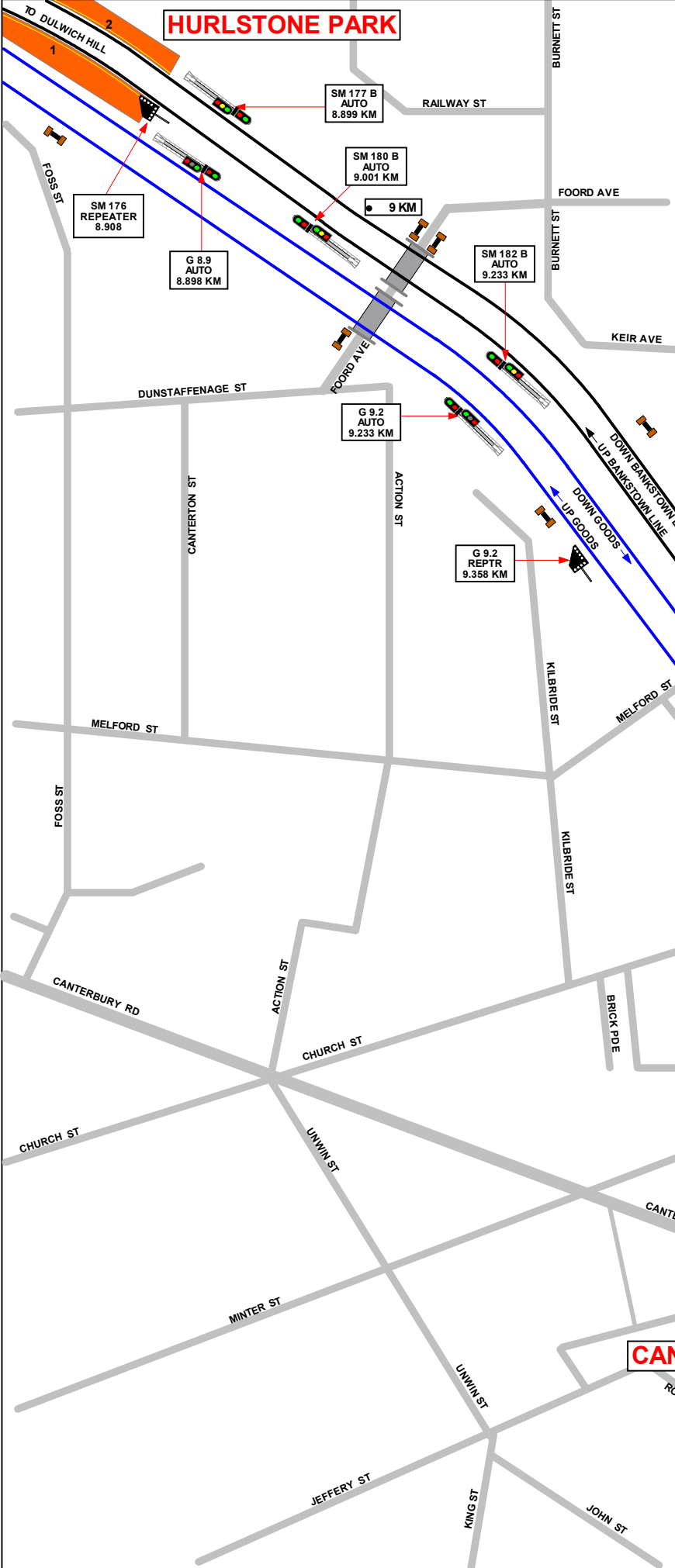
1 IN 440

1 IN 170



DULWICH HILL

HURLSTONE PARK



SECTION : HURLSTONE PARK TO CANTERBURY
MAP SET : SYDENHAM TO REGENTS PARK
 UPDATED TO : 9 April 2024

INFORMATION

SUBURBAN LINES
 CONTROLLED FROM : RAIL OPERATIONS CENTRE

RADIO AREA CODE : 057 (SYDENHAM)

FREIGHT LINE CONTROLLED FROM
 JUNEE NCCS " SYDNEY 1" BOARD
 PHONE No. 02 6924 9806
 EMERGENCY PHONE No. 02 6924 9866

RADIO AREA CODE :
 NATIONAL TRAIN COMMUNICATION SYSTEM (NTCS)

GRADIENT	
1 IN 170	
1 IN 160	
1 IN 132	
1 IN 100	
LEVEL	

CANTERBURY

SECTION : CANTERBURY TO CAMPSIE
MAP SET : SYDENHAM TO REGENTS PARK
AMENDED TO : 9 April 2024

INFORMATION

SUBURBAN LINES
 CONTROLLED FROM : RAIL OPERATIONS CENTRE

RADIO AREA CODE : 057 (SYDENHAM)

FREIGHT LINE CONTROLLED FROM
 JUNEE NCCS "SYDNEY 1" BOARD
 PHONE No. 02 6924 9806
 EMERGENCY PHONE No. 02 6924 9866

RADIO AREA CODE :
 NATIONAL TRAIN COMMUNICATION SYSTEM (NTCS)

APPENDICES
 PLEASE SEE APPENDICES FOR POINTS OF NO RETURN,
 TERMINATING MOVEMENTS AND SIDING LENGTHS

GRADIENT

LEVEL

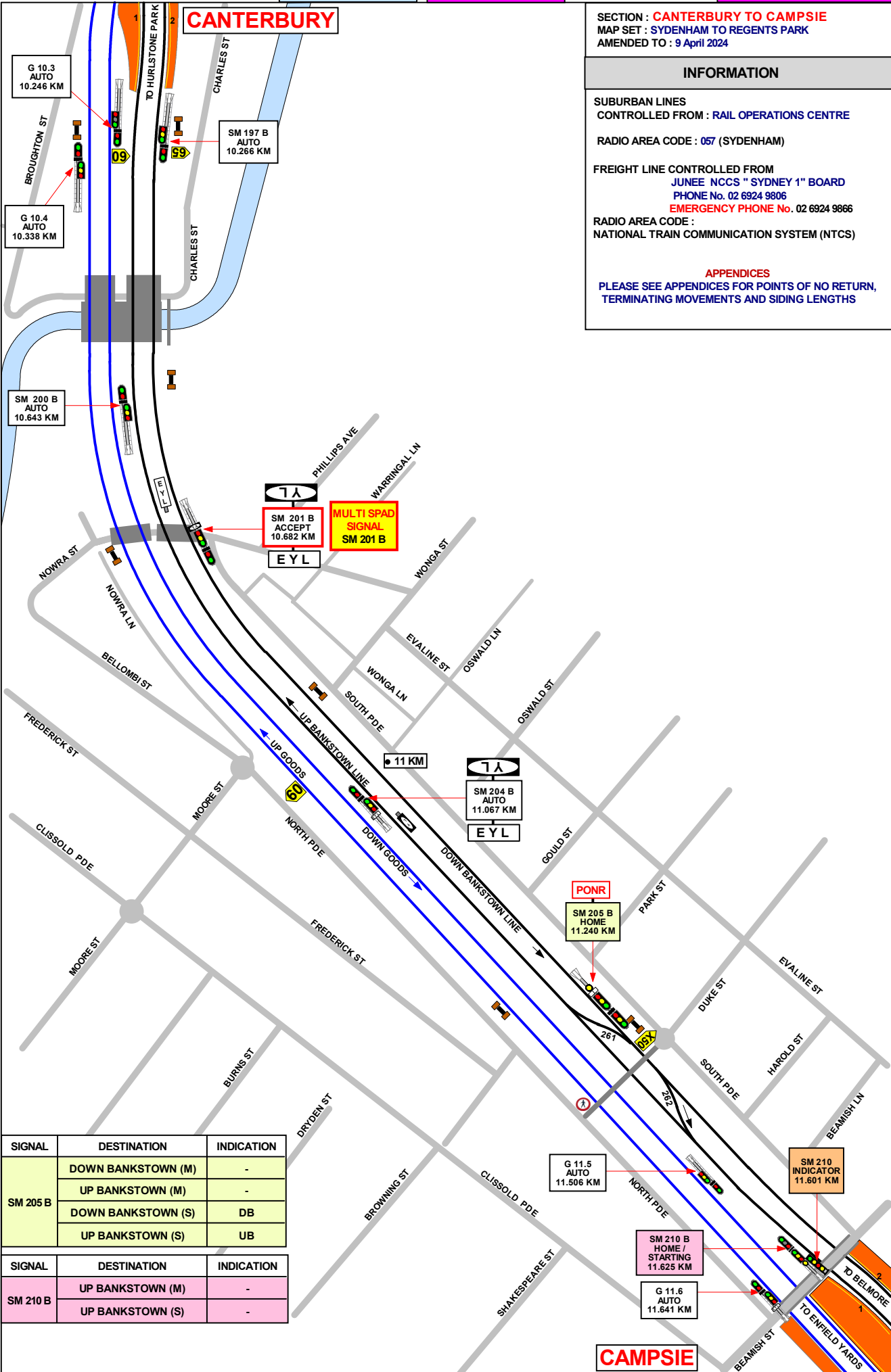
1 IN 264

1 IN 100

1 IN 132

1 IN 165

1 IN 400



SIGNAL	DESTINATION	INDICATION
SM 205 B	DOWN BANKSTOWN (M)	-
	UP BANKSTOWN (M)	-
	DOWN BANKSTOWN (S)	DB
	UP BANKSTOWN (S)	UB
SM 210 B	UP BANKSTOWN (M)	-
	UP BANKSTOWN (S)	-

SIGNAL	DESTINATION	INDICATION
SM 210 B	UP BANKSTOWN (M)	-
	UP BANKSTOWN (S)	-

CAMPSIE

SIGNAL	DESTINATION	INDICATION
SM 217 B	DN BANKSTOWN (M)	-
	DN BANKSTOWN (S)	DB

SECTION : **CAMPSIE TO BELMORE**
 MAP SET : SYDENHAM TO REGENTS PARK
 AMENDED TO : 9 April 2024

GRADIENT
1 IN 400
1 IN 150
1 IN 100
1 IN 184
1 IN 200
1 IN 384
1 IN 400

INFORMATION

SUBURBAN LINES
 CONTROLLED FROM : RAIL OPERATIONS CENTRE

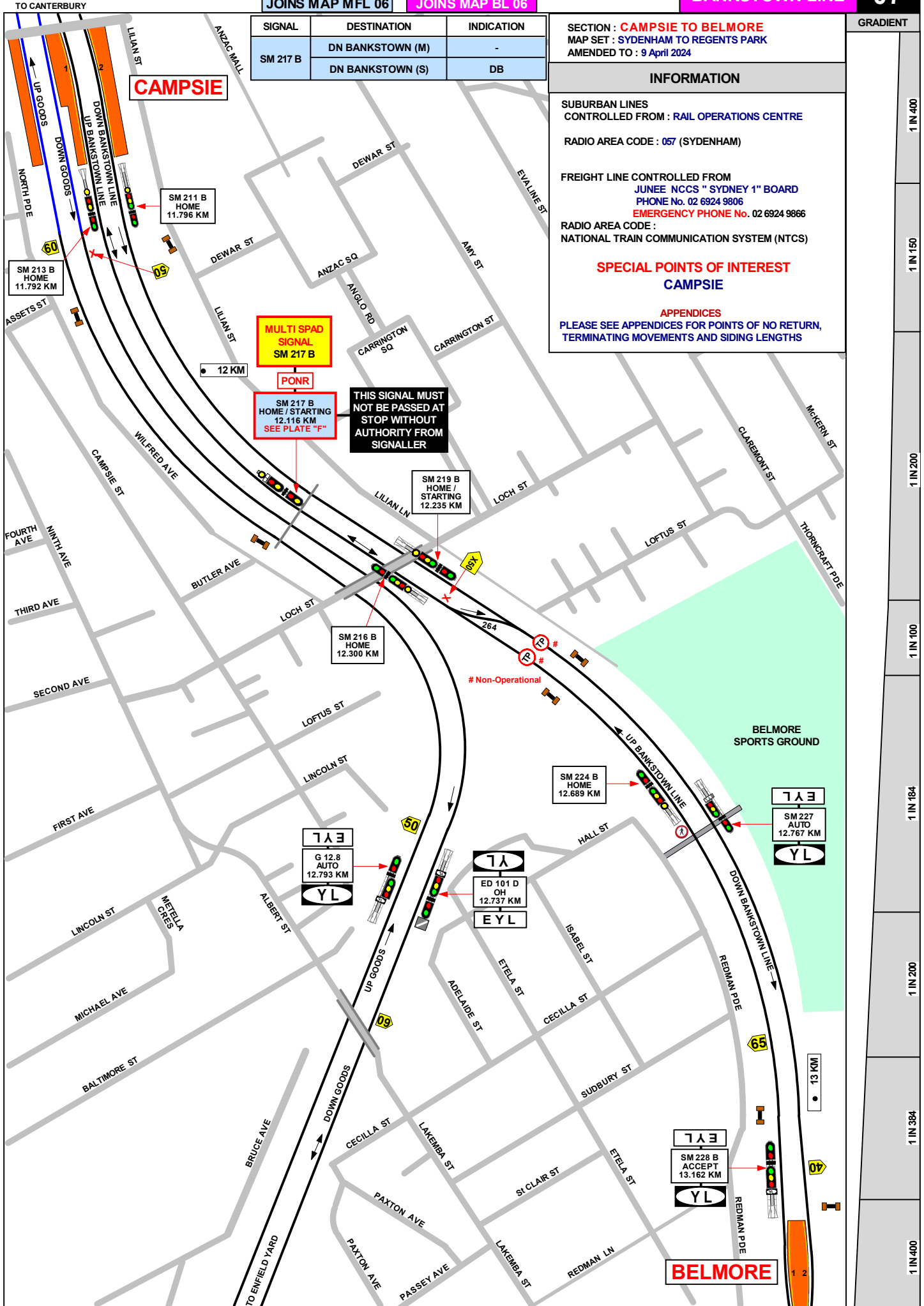
RADIO AREA CODE : 057 (SYDENHAM)

FREIGHT LINE CONTROLLED FROM
 JUNEE NCCS " SYDNEY 1" BOARD
 PHONE No. 02 6924 9806
 EMERGENCY PHONE No. 02 6924 9866

RADIO AREA CODE :
 NATIONAL TRAIN COMMUNICATION SYSTEM (NTCS)

SPECIAL POINTS OF INTEREST
CAMPSIE

APPENDICES
 PLEASE SEE APPENDICES FOR POINTS OF NO RETURN,
 TERMINATING MOVEMENTS AND SIDING LENGTHS



MULTI SPAD SIGNAL
SM 217 B

PONR

SM 217 B HOME / STARTING
 12.116 KM
 SEE PLATE "F"

THIS SIGNAL MUST NOT BE PASSED AT STOP WITHOUT AUTHORITY FROM SIGNALLER

SM 219 B HOME / STARTING
 12.235 KM

SM 216 B HOME / STARTING
 12.300 KM

SM 224 B HOME / STARTING
 12.689 KM

EYL
 SM 227 AUTO
 12.767 KM
 YL

G 12.8 AUTO
 12.793 KM
 YL

ED 101 D OH
 12.737 KM
 EYL

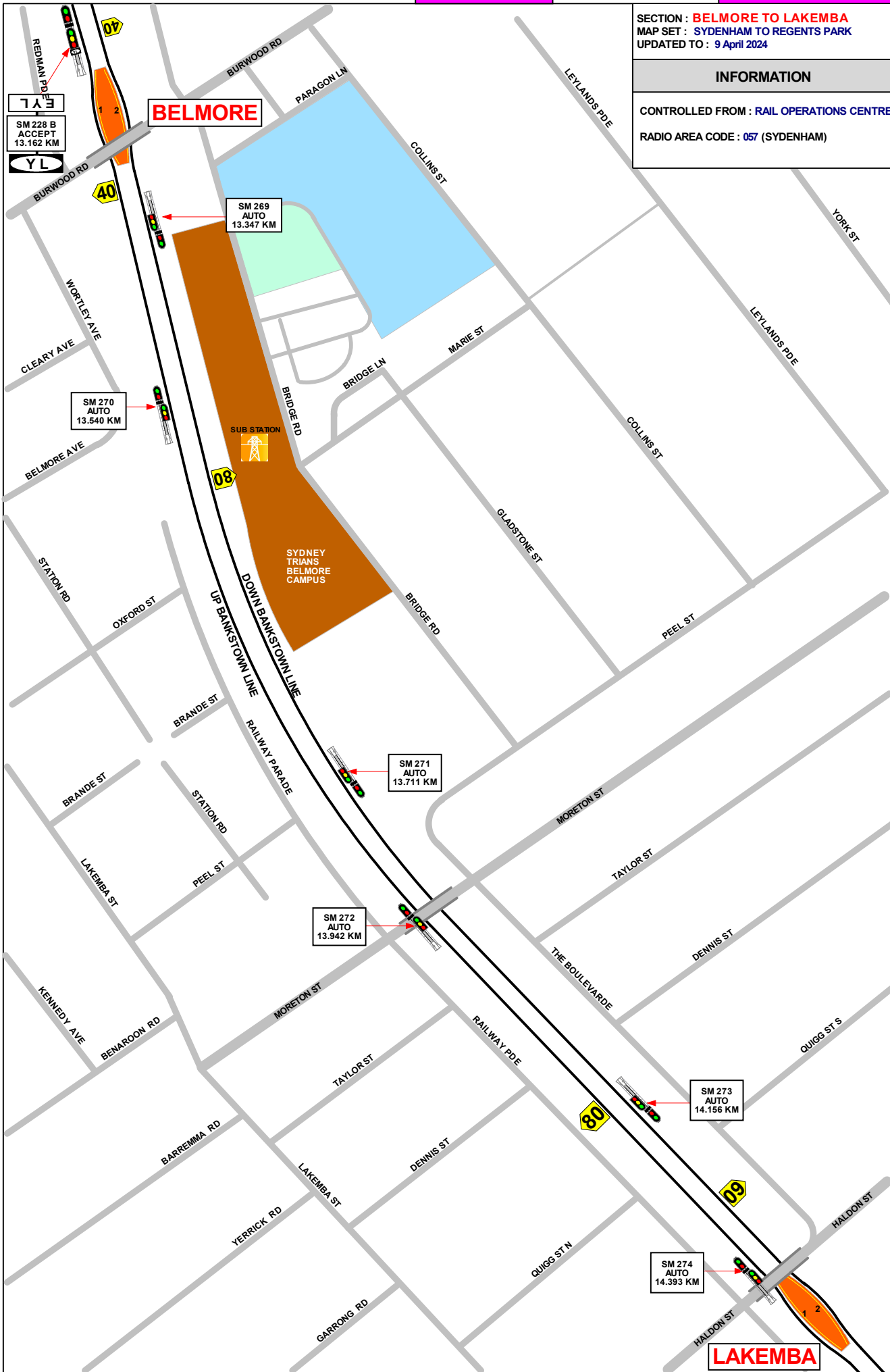
EYL
 SM 228 B ACCEPT
 13.162 KM
 YL

SECTION : **BELMORE TO LAKEMBA**
 MAP SET : SYDENHAM TO REGENTS PARK
 UPDATED TO : 9 April 2024

INFORMATION

CONTROLLED FROM : RAIL OPERATIONS CENTRE
 RADIO AREA CODE : 057 (SYDENHAM)

GRADIENT	
1 IN 364	LEVEL
1 IN 400	LEVEL
1 IN 452	LEVEL
1 IN 100	LEVEL
1 IN 660	LEVEL

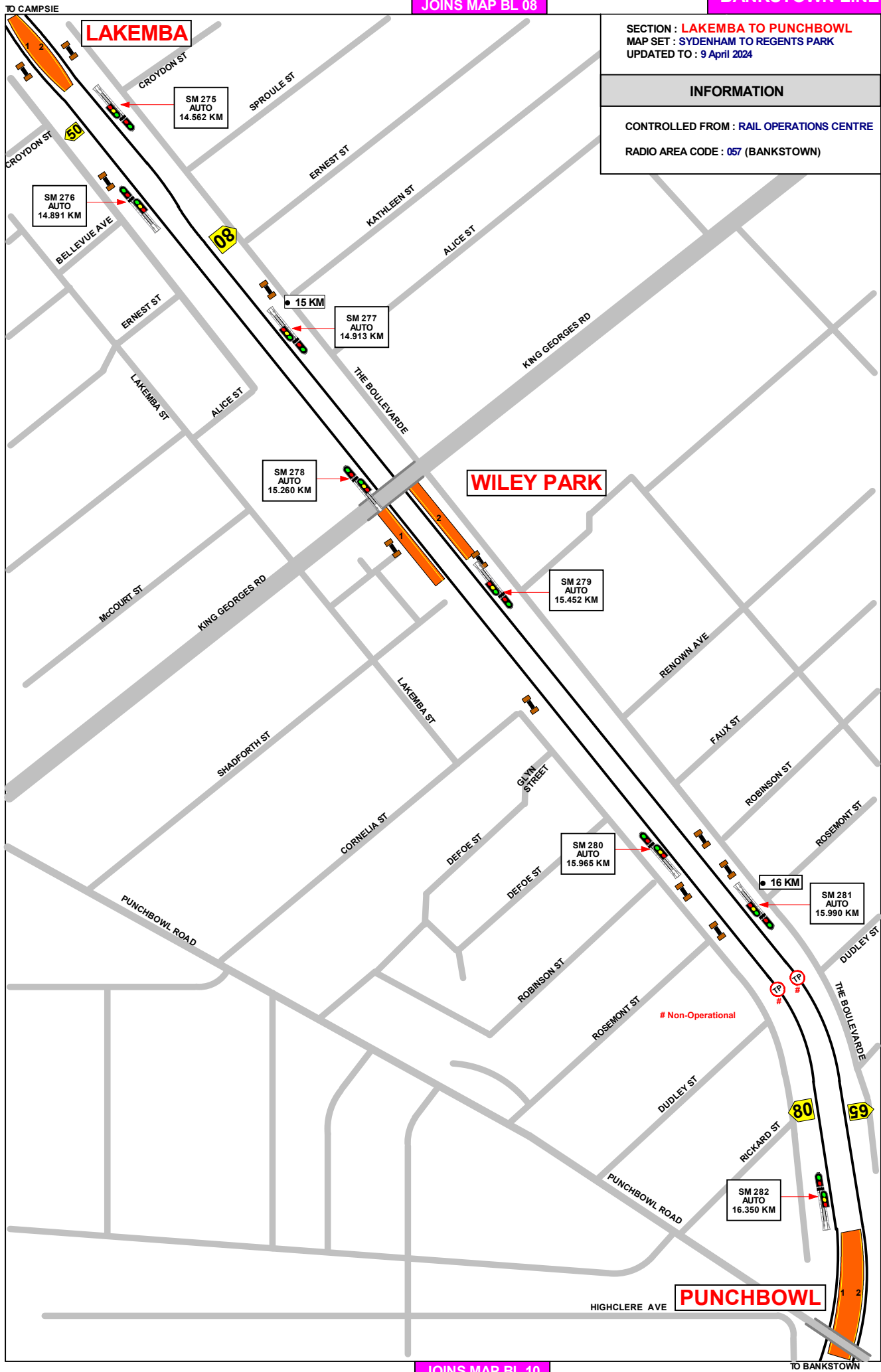


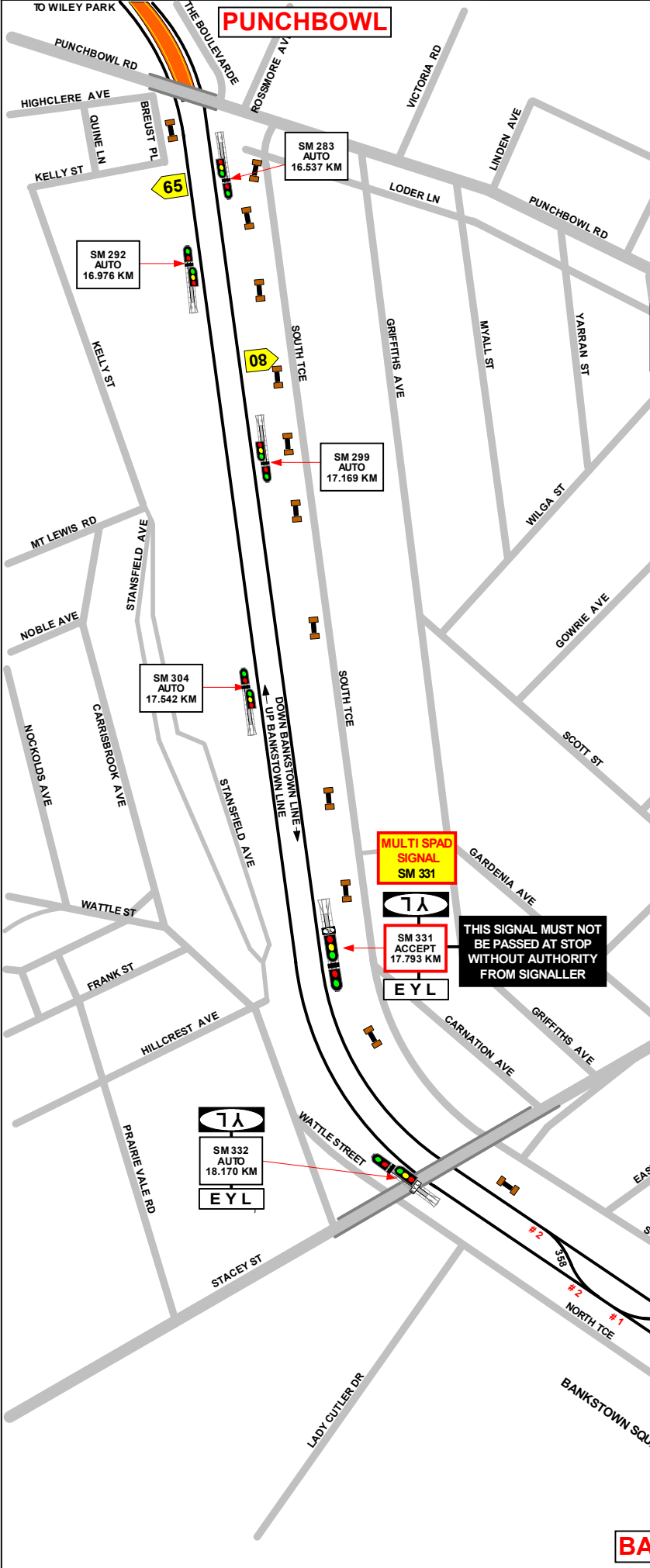
SECTION : LAKEMBA TO PUNCHBOWL
 MAP SET : SYDENHAM TO REGENTS PARK
 UPDATED TO : 9 April 2024

INFORMATION

CONTROLLED FROM : RAIL OPERATIONS CENTRE
 RADIO AREA CODE : 057 (BANKSTOWN)

GRADIENT	
1 IN 100	LEVEL
1 IN 660	LEVEL
1 IN 110	LEVEL
1 IN 120	LEVEL
1 IN 165	LEVEL
1 IN 100	LEVEL
1 IN 275	LEVEL
1 IN 232	LEVEL
1 IN 164	LEVEL





SECTION : PUNCHBOWL TO BANKSTOWN
MAP SET : SYDENHAM TO REGENTS PARK
UPDATED TO : 9 April 2024

INFORMATION

CONTROLLED FROM : RAIL OPERATIONS CENTRE

RADIO AREA CODE : 057 (SYDENHAM)

APPENDICES
 PLEASE SEE APPENDICES FOR POINTS OF NO RETURN,
 TERMINATING MOVEMENTS AND SIDING LENGTHS

SIGNAL	DESTINATION	INDICATION
# 3 SM 335	DOWN BANKSTOWN	DB
	UP BANKSTOWN	UB

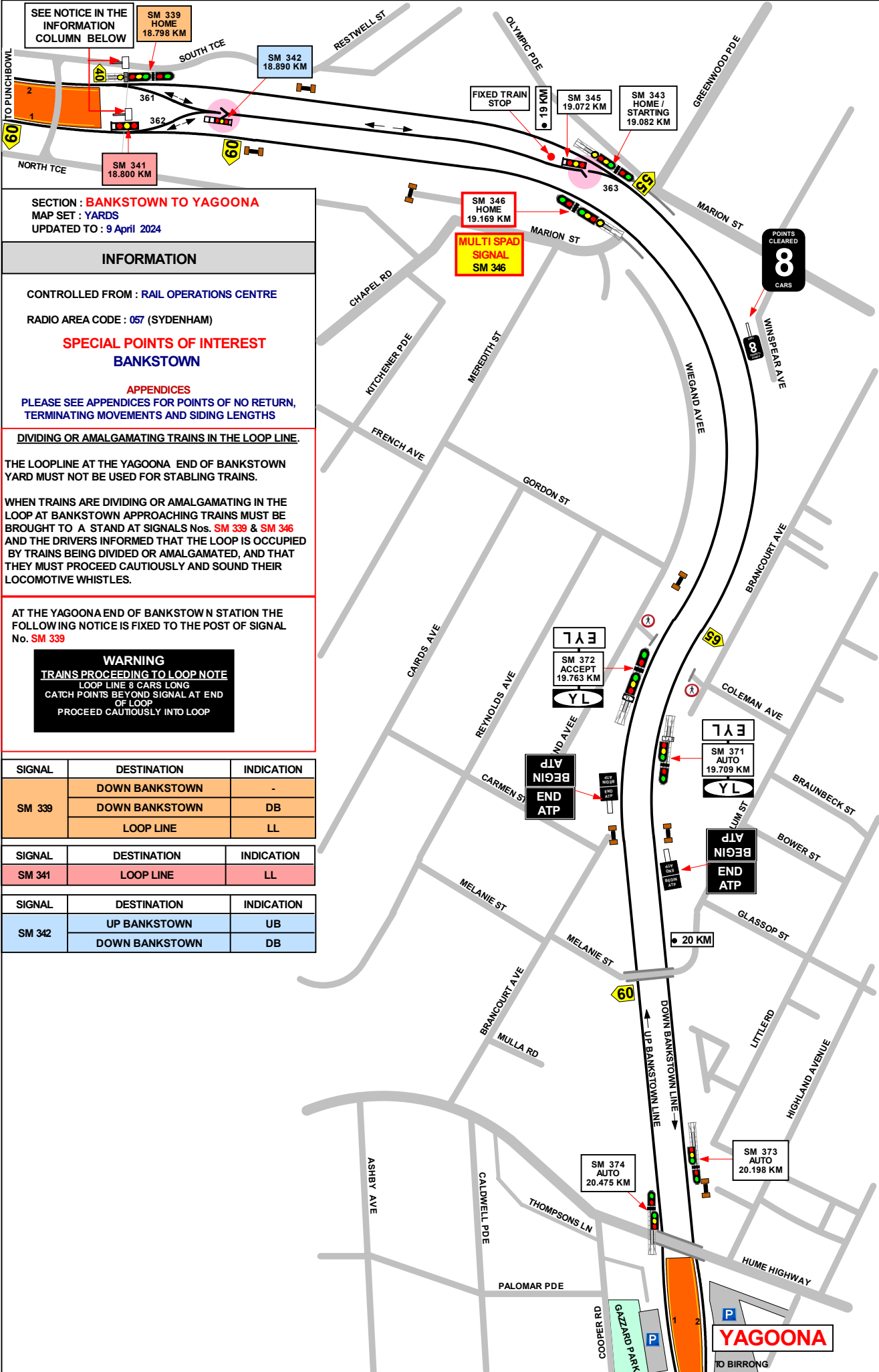
- # 1 POINTS CLIPPED, SPIKED AND XL LOCKED IN NORMAL POSITION
- # 2 POINTS CLIPPED, SPIKED, XL LOCKED AND DETECTED IN NORMAL POSITION
- # 3 DB ROUTE INDICATOR BOOKED OUT OF USE
- # 4 BLANKING PLATE INSTALLED

GRADIENT	LEVEL
1 IN 164	
1 IN 100	
1 IN 440	
1 IN 100	
1 IN 165	
1 IN 100	
1 IN 94	
1 IN 868	
1 IN 662	

BANKSTOWN

SM 338 AUTO 18.616 KM

SM 338 CO-ACT 18.616 KM



SEE NOTICE IN THE INFORMATION COLUMN BELOW

SM 339 HOME 18.798 KM

SM 342 18.890 KM

SM 341 18.800 KM

FIXED TRAIN STOP

SM 345 19.072 KM

SM 343 HOME / STARTING 19.082 KM

SECTION : **BANKSTOWN TO YAGOONA**
 MAP SET : YARDS
 UPDATED TO : 9 April 2024

INFORMATION

CONTROLLED FROM : RAIL OPERATIONS CENTRE
 RADIO AREA CODE : 057 (SYDENHAM)

SPECIAL POINTS OF INTEREST
BANKSTOWN

APPENDICES
 PLEASE SEE APPENDICES FOR POINTS OF NO RETURN, TERMINATING MOVEMENTS AND SIDING LENGTHS

DIVIDING OR AMALGAMATING TRAINS IN THE LOOP LINE.

THE LOOP LINE AT THE YAGOONA END OF BANKSTOWN YARD MUST NOT BE USED FOR STABLING TRAINS.

WHEN TRAINS ARE DIVIDING OR AMALGAMATING IN THE LOOP AT BANKSTOWN APPROACHING TRAINS MUST BE BROUGHT TO A STAND AT SIGNALS Nos. **SM 339** & **SM 346** AND THE DRIVERS INFORMED THAT THE LOOP IS OCCUPIED BY TRAINS BEING DIVIDED OR AMALGAMATED, AND THAT THEY MUST PROCEED CAUTIOUSLY AND SOUND THEIR LOCOMOTIVE WHISTLES.

AT THE YAGOONA END OF BANKSTOWN STATION THE FOLLOWING NOTICE IS FIXED TO THE POST OF SIGNAL No. **SM 339**

WARNING
 TRAINS PROCEEDING TO LOOP NOTE
 LOOP LINE 8 CARS LONG
 CATCH POINTS BEYOND SIGNAL AT END OF LOOP
 PROCEED CAUTIOUSLY INTO LOOP

SIGNAL	DESTINATION	INDICATION
SM 339	DOWN BANKSTOWN	-
	DOWN BANKSTOWN	DB
	LOOP LINE	LL

SIGNAL	DESTINATION	INDICATION
SM 341	LOOP LINE	LL

SIGNAL	DESTINATION	INDICATION
SM 342	UP BANKSTOWN	UB
	DOWN BANKSTOWN	DB

SECTION : **YAGOONA TO BIRRONG**
MAP SET : SYDENHAM TO REGENTS PARK
UPDATED TO : 9 April 2024

GRADIENT

INFORMATION

CONTROLLED FROM : **RAIL OPERATIONS CENTRE**
RADIO AREA CODE : **057 (BANKSTOWN)**
054 (SEFTON PARK JUNCTION)

1 IN 225

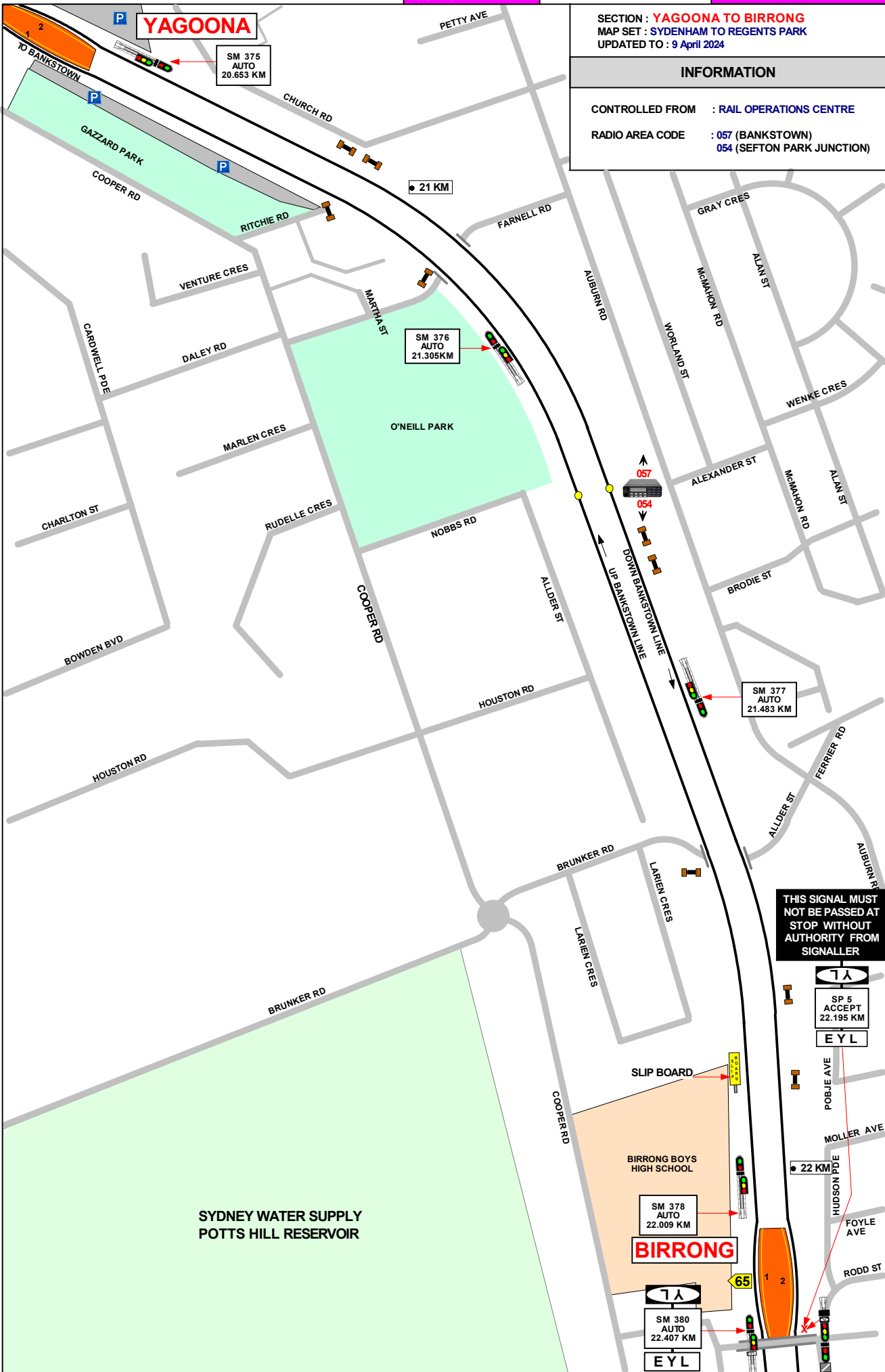
LEVEL

1 IN 79

1 IN 72

1 IN 1320

1 IN 70



THIS SIGNAL MUST NOT BE PASSED AT STOP WITHOUT AUTHORITY FROM SIGNALLER

7A
SP 5
ACCEPT
22.195 KM
EYL

BIRRONG

7A
SM 380
AUTO
22.407 KM
EYL

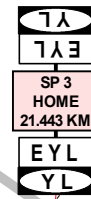
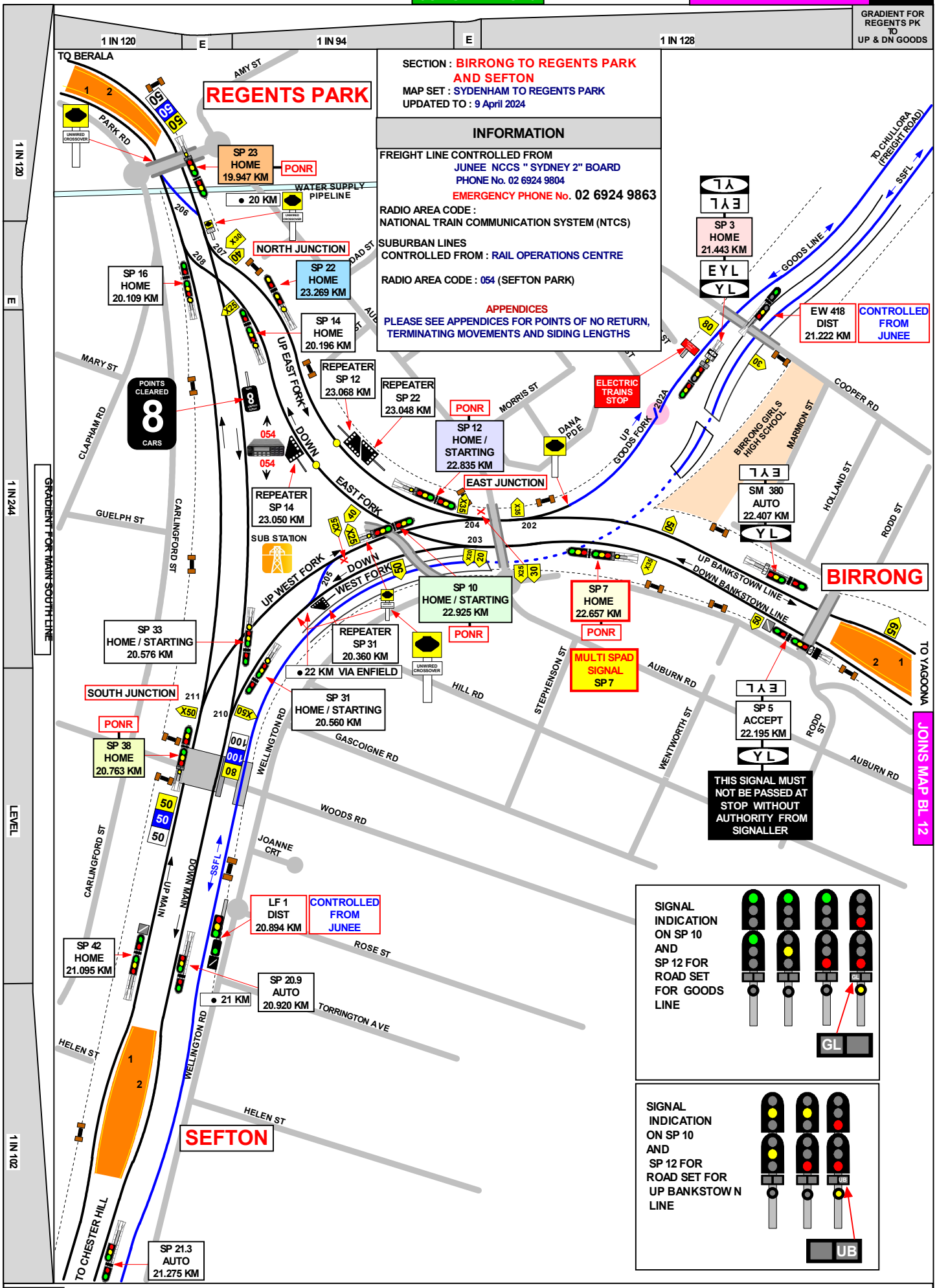
GRADIENT FOR REGENTS PK TO UP & DN GOODS

SECTION : BIRorong TO REGENTS PARK AND SEFTON
MAP SET : SYDENHAM TO REGENTS PARK
UPDATED TO : 9 April 2024

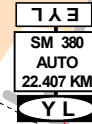
INFORMATION

FREIGHT LINE CONTROLLED FROM JUNE E NCCS " SYDNEY 2" BOARD
PHONE No. 02 6924 9804
EMERGENCY PHONE No. 02 6924 9863
RADIO AREA CODE : NATIONAL TRAIN COMMUNICATION SYSTEM (NTCS)
SUBURBAN LINES CONTROLLED FROM : RAIL OPERATIONS CENTRE
RADIO AREA CODE : 054 (SEFTON PARK)

APPENDICES
PLEASE SEE APPENDICES FOR POINTS OF NO RETURN, TERMINATING MOVEMENTS AND SIDING LENGTHS



EW 418 DIST 21.222 KM CONTROLLED FROM JUNE E



BIRorong

THIS SIGNAL MUST NOT BE PASSED AT STOP WITHOUT AUTHORITY FROM SIGNALLER

