

DRIVERS ROUTE KNOWLEDGE DIAGRAMS

BANKSTOWN LINE

BANKSTOWN

YAGOONA

BIRRONG

THE BANKSTOWN LINE IS TEMPORARILY CLOSED.

SYDENHAM TO BANKSTOWN WILL FORM PART OF THE SYDNEY METRO UPON REOPENING.

Effective Date: January 2025

Version: 4.59

Explanatory Notes:

Navigate to your area of interest via the station index or by using links created in Adobe bookmarks.

This document is approved for **route knowledge only**.

Do not use these diagrams for any safety related purpose without validating the information against a controlled source or in the field.

Information in these diagrams is uncontrolled.

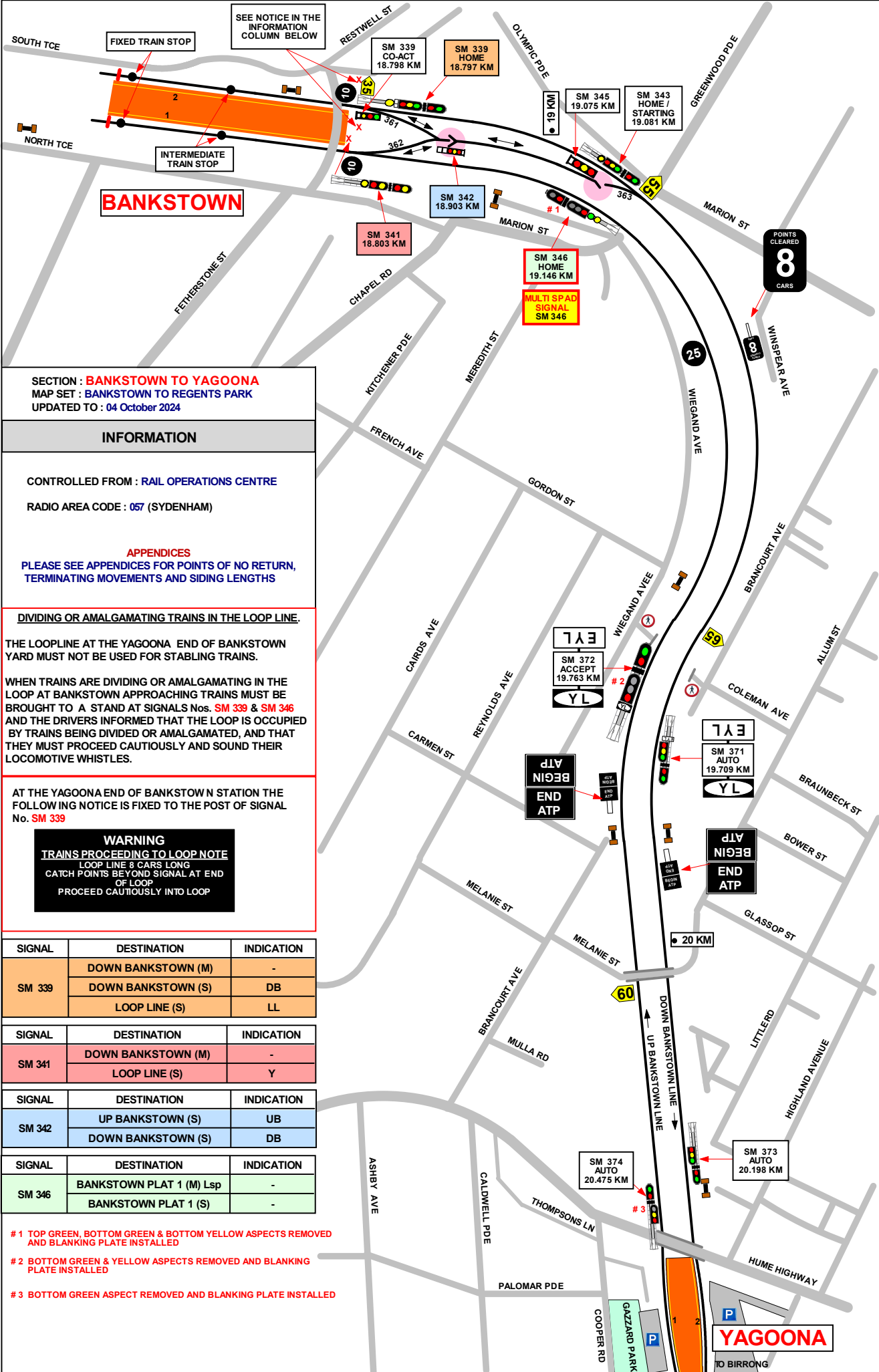
Please report any updates to gis.support@transport.nsw.gov.au



Copyright: Sydney Trains

Ownership: Location Services

Location: CM Record No.D2015/586



GRADIENT	
1 IN 668	1 IN 662
1 IN 440	1 IN 81
1 IN 170	1 IN 70
1 IN 170	1 IN 82
1 IN 70	1 IN 153
1 IN 225	

SECTION : BANKSTOWN TO YAGOONA
MAP SET : BANKSTOWN TO REGENTS PARK
 UPDATED TO : 04 October 2024

INFORMATION

CONTROLLED FROM : RAIL OPERATIONS CENTRE
 RADIO AREA CODE : 057 (SYDENHAM)

APPENDICES
 PLEASE SEE APPENDICES FOR POINTS OF NO RETURN, TERMINATING MOVEMENTS AND SIDING LENGTHS

DIVIDING OR AMALGAMATING TRAINS IN THE LOOP LINE.

THE LOOPLINE AT THE YAGOONA END OF BANKSTOWN YARD MUST NOT BE USED FOR STABLING TRAINS.

WHEN TRAINS ARE DIVIDING OR AMALGAMATING IN THE LOOP AT BANKSTOWN APPROACHING TRAINS MUST BE BROUGHT TO A STAND AT SIGNALS Nos. **SM 339** & **SM 346** AND THE DRIVERS INFORMED THAT THE LOOP IS OCCUPIED BY TRAINS BEING DIVIDED OR AMALGAMATED, AND THAT THEY MUST PROCEED CAUTIOUSLY AND SOUND THEIR LOCOMOTIVE WHISTLES.

AT THE YAGOONA END OF BANKSTOWN STATION THE FOLLOWING NOTICE IS FIXED TO THE POST OF SIGNAL No. **SM 339**

WARNING
TRAINS PROCEEDING TO LOOP NOTE
 LOOP LINE 8 CARS LONG
 CATCH POINTS BEYOND SIGNAL AT END OF LOOP
 PROCEED CAUTIOUSLY INTO LOOP

SIGNAL	DESTINATION	INDICATION
SM 339	DOWN BANKSTOWN (M)	-
	DOWN BANKSTOWN (S)	DB
	LOOP LINE (S)	LL

SIGNAL	DESTINATION	INDICATION
SM 341	DOWN BANKSTOWN (M)	-
	LOOP LINE (S)	Y

SIGNAL	DESTINATION	INDICATION
SM 342	UP BANKSTOWN (S)	UB
	DOWN BANKSTOWN (S)	DB

SIGNAL	DESTINATION	INDICATION
SM 346	BANKSTOWN PLAT 1 (M) Lsp	-
	BANKSTOWN PLAT 1 (S)	-

- # 1 TOP GREEN, BOTTOM GREEN & BOTTOM YELLOW ASPECTS REMOVED AND BLANKING PLATE INSTALLED
- # 2 BOTTOM GREEN & YELLOW ASPECTS REMOVED AND BLANKING PLATE INSTALLED
- # 3 BOTTOM GREEN ASPECT REMOVED AND BLANKING PLATE INSTALLED

SECTION : **YAGOONA TO BIRRONG**
MAP SET : **BANKSTOWN TO REGENTS PARK**
UPDATED TO : 04 October 2024

GRADIENT

INFORMATION

CONTROLLED FROM : **RAIL OPERATIONS CENTRE**
RADIO AREA CODE : **057 (BANKSTOWN)**
054 (SEFTON PARK JUNCTION)

1 IN 225

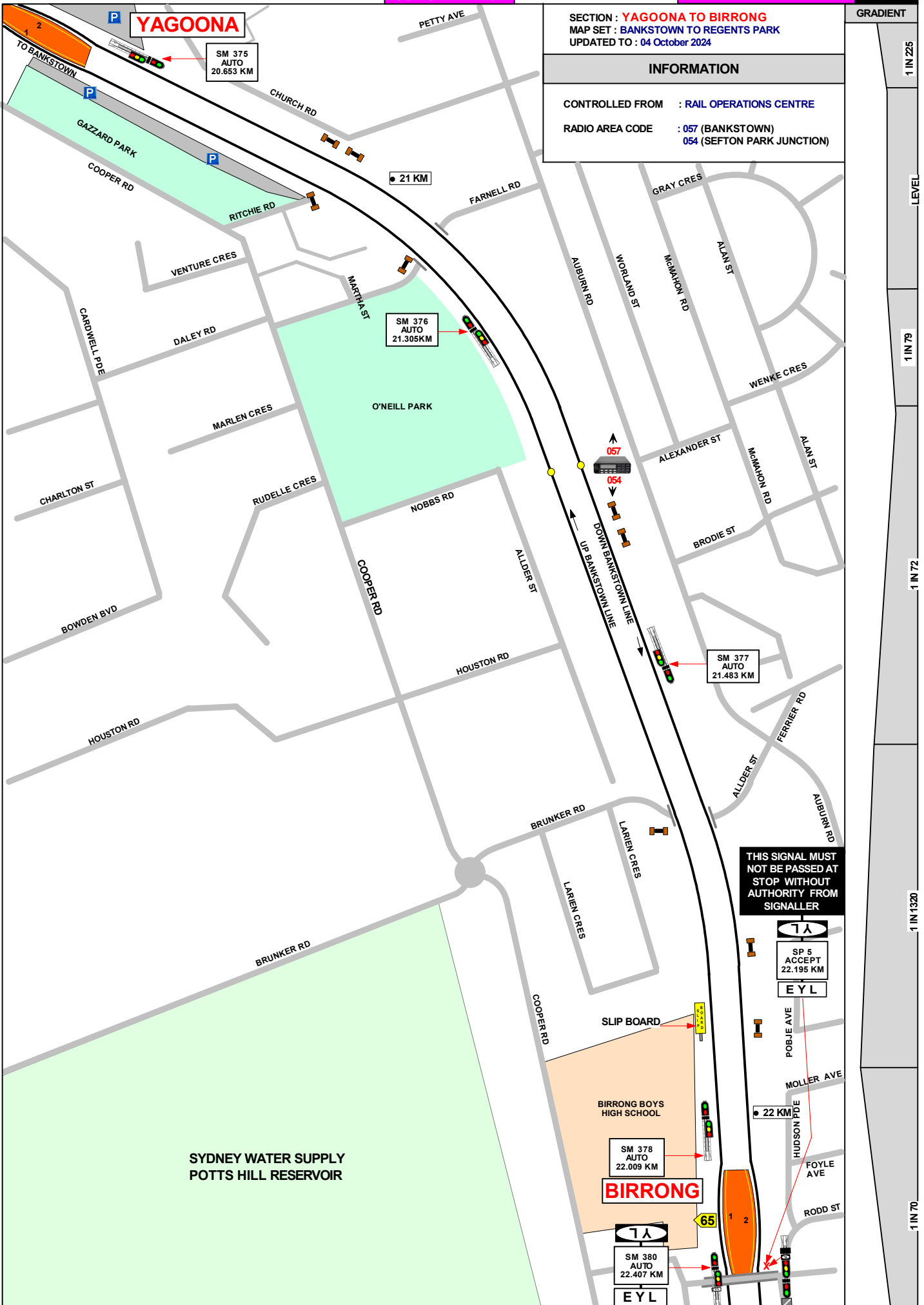
LEVEL

1 IN 79

1 IN 72

1 IN 1320

1 IN 70



THIS SIGNAL MUST NOT BE PASSED AT STOP WITHOUT AUTHORITY FROM SIGNALLER

7A
SP 5
ACCEPT
22.195 KM
EYL

BIRRONG

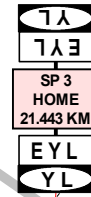
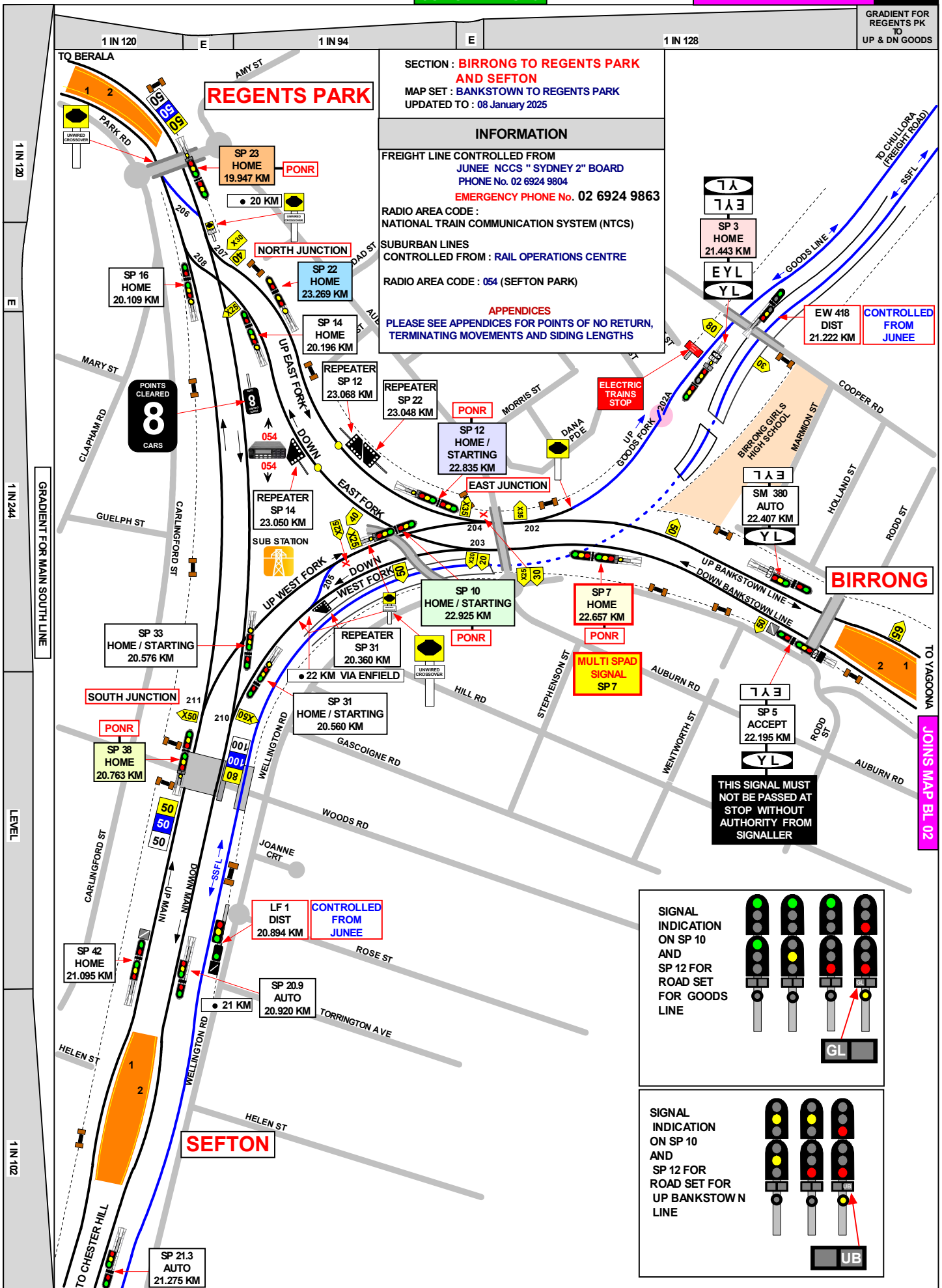
7A
SM 380
AUTO
22.407 KM
EYL

GRADIENT FOR REGENTS PK TO UP & DN GOODS

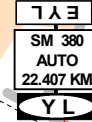
SECTION : BIRRONG TO REGENTS PARK AND SEFTON
MAP SET : BANKSTOWN TO REGENTS PARK
UPDATED TO : 08 January 2025

INFORMATION
FREIGHT LINE CONTROLLED FROM JUNEЕ NCCS " SYDNEY 2" BOARD
PHONE No. 02 6924 9804
EMERGENCY PHONE No. 02 6924 9863
RADIO AREA CODE : NATIONAL TRAIN COMMUNICATION SYSTEM (NTCS)
SUBURBAN LINES CONTROLLED FROM : RAIL OPERATIONS CENTRE
RADIO AREA CODE : 054 (SEFTON PARK)

APPENDICES
PLEASE SEE APPENDICES FOR POINTS OF NO RETURN, TERMINATING MOVEMENTS AND SIDING LENGTHS

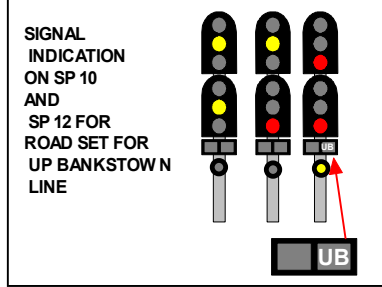
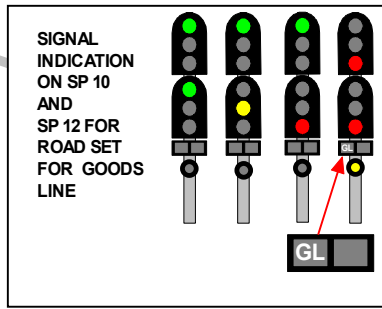


EW 418 DIST 21.222 KM CONTROLLED FROM JUNEЕ



BIRRONG

THIS SIGNAL MUST NOT BE PASSED AT STOP WITHOUT AUTHORITY FROM SIGNALLER



JOINS MAP BL 02