

# DRIVERS ROUTE KNOWLEDGE DIAGRAMS

## BANKSTOWN LINE

BANKSTOWN

YAGOONA

BIRRONG

**THE BANKSTOWN LINE IS TEMPORARILY CLOSED.**

**SYDENHAM TO BANKSTOWN WILL FORM PART OF THE SYDNEY METRO UPON REOPENING.**

**Effective Date:** April 2025

**Version:** 4.61

### **Explanatory Notes:**

Navigate to your area of interest via the station index or by using links created in Adobe bookmarks.

This document is approved for **route knowledge only**.

**Do not use these diagrams for any safety related purpose** without validating the information against a controlled source or in the field.

Information in these diagrams is uncontrolled.

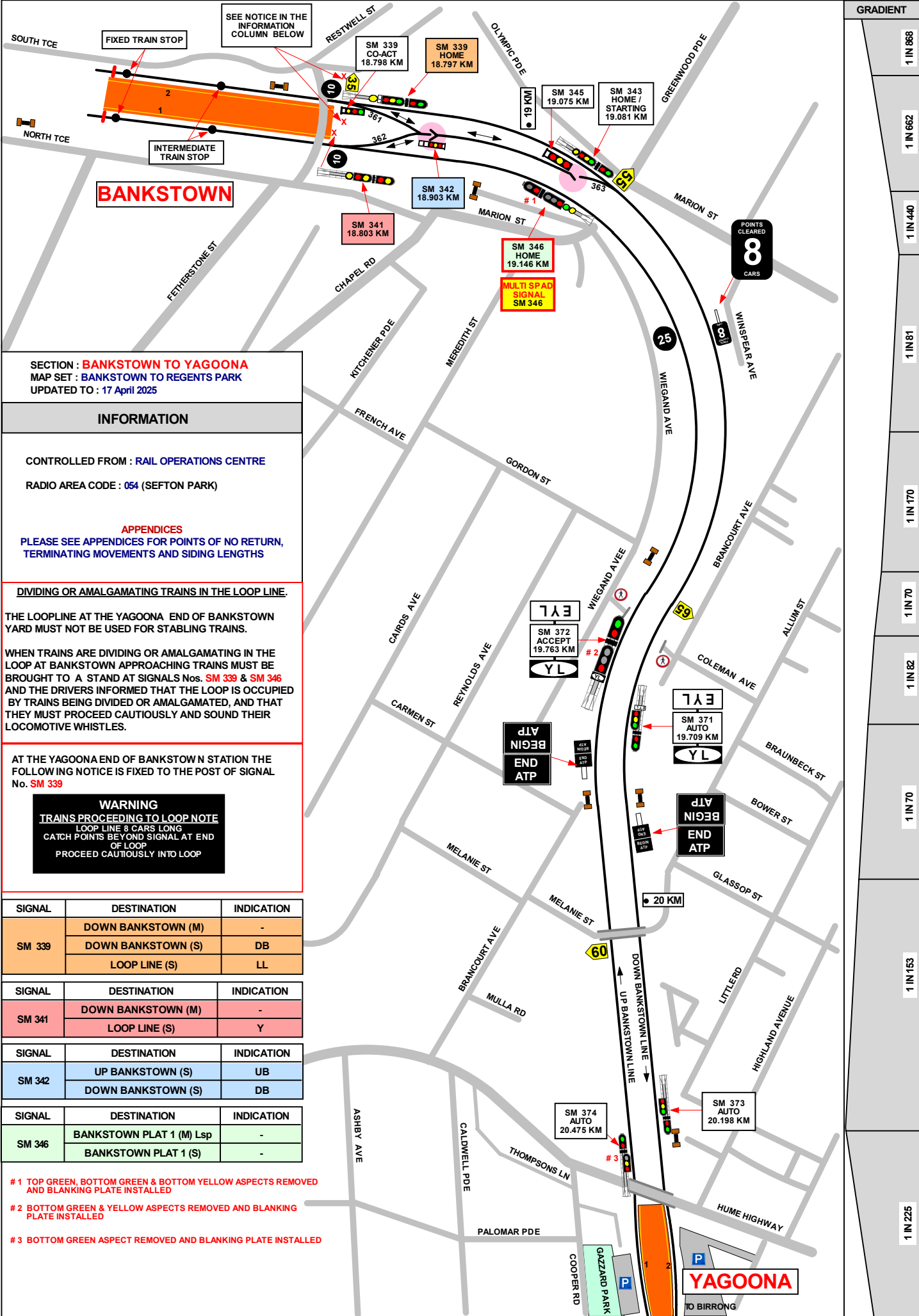
Please report any updates to [gis.support@transport.nsw.gov.au](mailto:gis.support@transport.nsw.gov.au)



**Copyright:** Sydney Trains

**Ownership:** Location Services

**Location:** CM Record No.D2015/586



**INFORMATION**

CONTROLLED FROM : RAIL OPERATIONS CENTRE  
 RADIO AREA CODE : 054 (SEFTON PARK)

**APPENDICES**  
 PLEASE SEE APPENDICES FOR POINTS OF NO RETURN,  
 TERMINATING MOVEMENTS AND SIDING LENGTHS

**DIVIDING OR AMALGAMATING TRAINS IN THE LOOP LINE.**

THE LOOPLINE AT THE YAGOONA END OF BANKSTOWN YARD MUST NOT BE USED FOR STABLING TRAINS.  
 WHEN TRAINS ARE DIVIDING OR AMALGAMATING IN THE LOOP AT BANKSTOWN APPROACHING TRAINS MUST BE BROUGHT TO A STAND AT SIGNALS Nos. **SM 339** & **SM 346** AND THE DRIVERS INFORMED THAT THE LOOP IS OCCUPIED BY TRAINS BEING DIVIDED OR AMALGAMATED, AND THAT THEY MUST PROCEED CAUTIOUSLY AND SOUND THEIR LOCOMOTIVE WHISTLES.

AT THE YAGOONA END OF BANKSTOWN STATION THE FOLLOWING NOTICE IS FIXED TO THE POST OF SIGNAL No. **SM 339**

**WARNING**  
**TRAINS PROCEEDING TO LOOP NOTE**  
 LOOP LINE 8 CARS LONG  
 CATCH POINTS BEYOND SIGNAL AT END OF LOOP  
 PROCEED CAUTIOUSLY INTO LOOP

SIGNAL	DESTINATION	INDICATION
SM 339	DOWN BANKSTOWN (M)	-
	DOWN BANKSTOWN (S)	DB
	LOOP LINE (S)	LL

SIGNAL	DESTINATION	INDICATION
SM 341	DOWN BANKSTOWN (M)	-
	LOOP LINE (S)	Y

SIGNAL	DESTINATION	INDICATION
SM 342	UP BANKSTOWN (S)	UB
	DOWN BANKSTOWN (S)	DB

SIGNAL	DESTINATION	INDICATION
SM 346	BANKSTOWN PLAT 1 (M) Lsp	-
	BANKSTOWN PLAT 1 (S)	-

- # 1 TOP GREEN, BOTTOM GREEN & BOTTOM YELLOW ASPECTS REMOVED AND BLANKING PLATE INSTALLED
- # 2 BOTTOM GREEN & YELLOW ASPECTS REMOVED AND BLANKING PLATE INSTALLED
- # 3 BOTTOM GREEN ASPECT REMOVED AND BLANKING PLATE INSTALLED

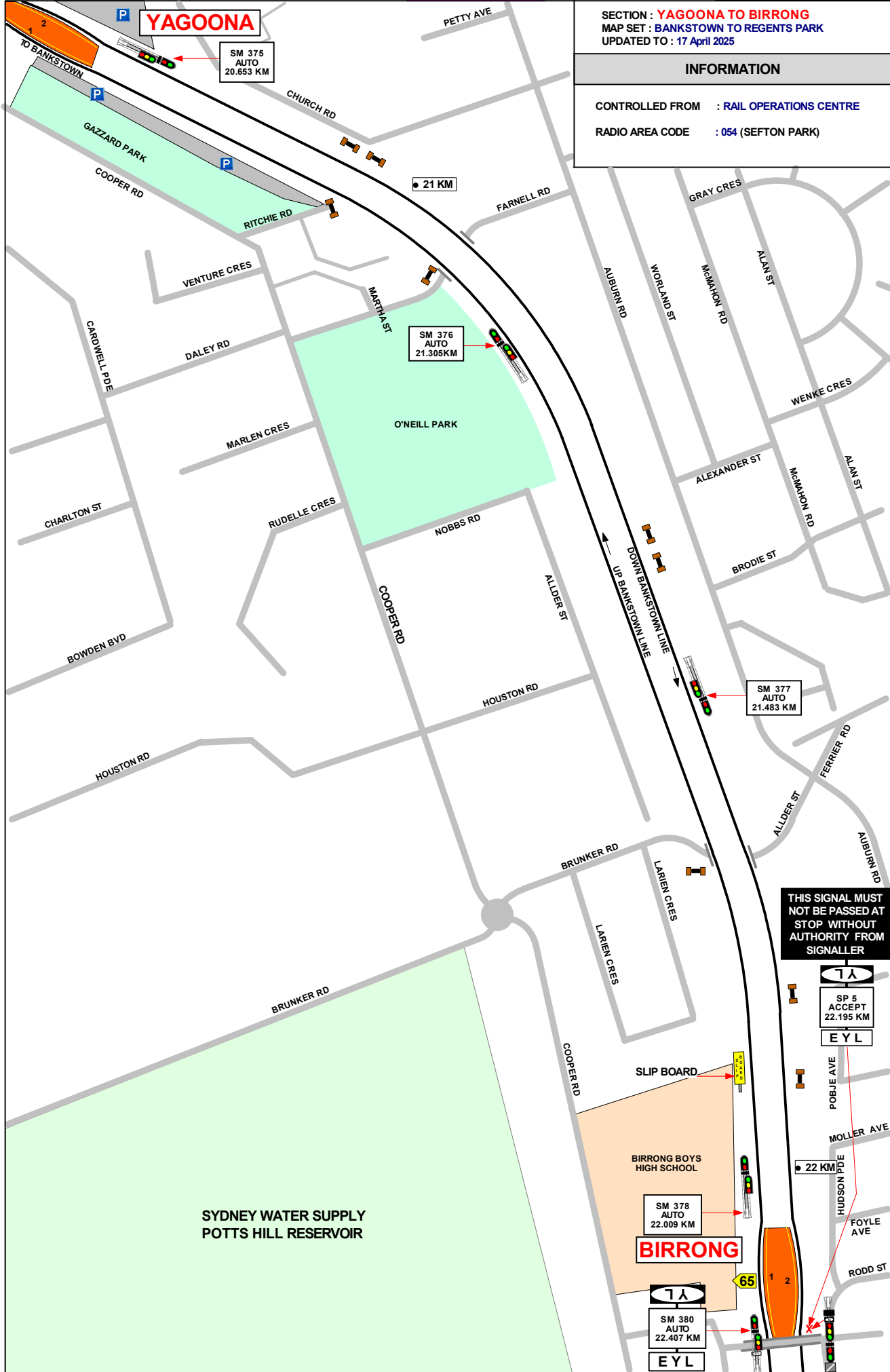
SECTION : **YAGOONA TO BIRRONG**  
 MAP SET : **BANKSTOWN TO REGENTS PARK**  
 UPDATED TO : 17 April 2025

GRADIENT
1 IN 225
1 IN 79
1 IN 72
1 IN 1320
1 IN 70

**INFORMATION**

CONTROLLED FROM : **RAIL OPERATIONS CENTRE**

RADIO AREA CODE : **054 (SEFTON PARK)**



**THIS SIGNAL MUST NOT BE PASSED AT STOP WITHOUT AUTHORITY FROM SIGNALLER**

7A  
 SP 5  
 ACCEPT  
 22.195 KM  
**EYL**

SLIP BOARD

SM 378  
 AUTO  
 22.009 KM

**BIRRONG**

65

7A  
 SM 380  
 AUTO  
 22.407 KM  
**EYL**

TO REGENTS PARK OR SEFTON

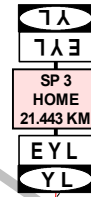
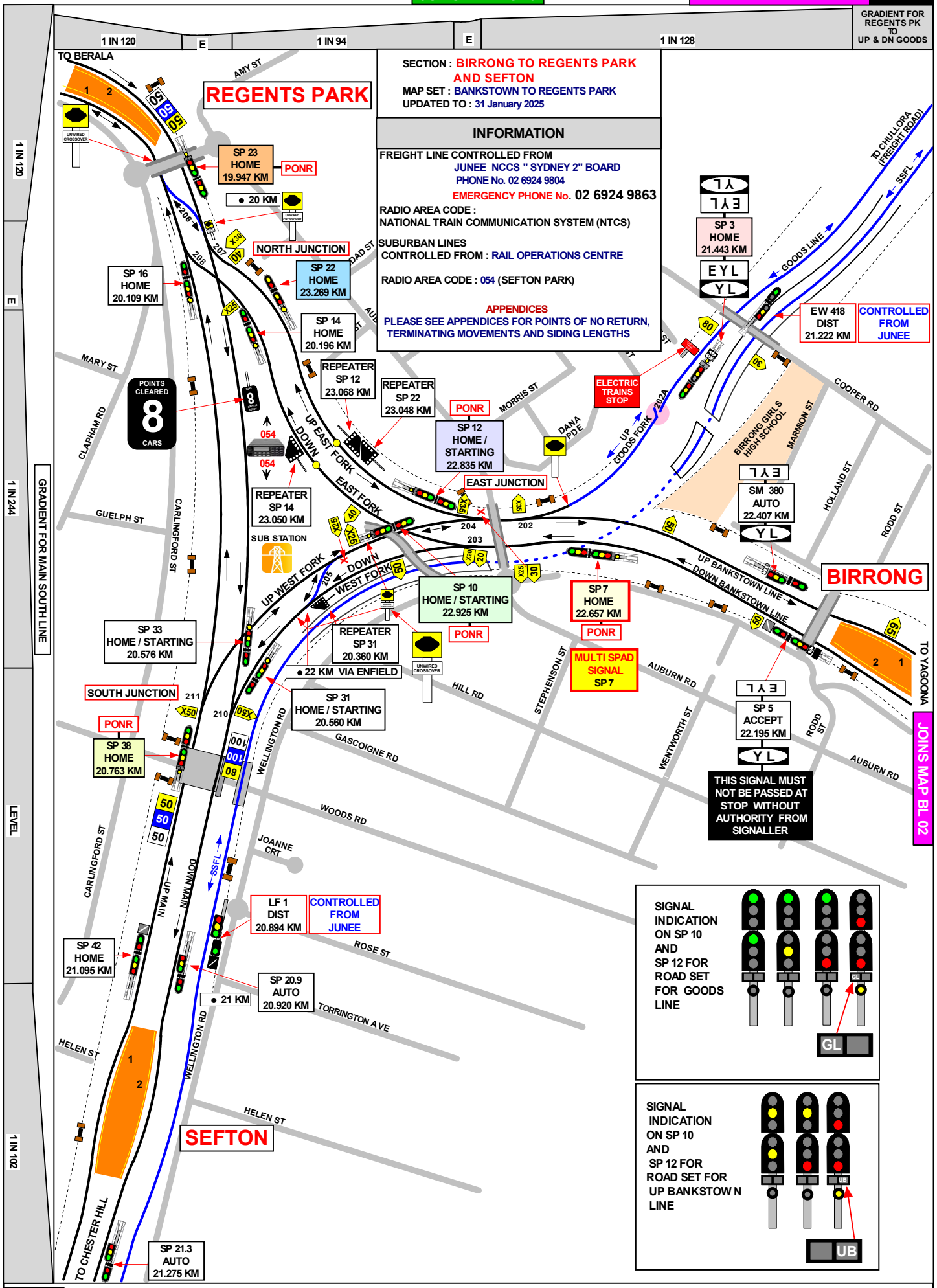
GRADIENT FOR REGENTS PK TO UP & DN GOODS

SECTION : BIRRONG TO REGENTS PARK AND SEFTON  
MAP SET : BANKSTOWN TO REGENTS PARK  
UPDATED TO : 31 January 2025

INFORMATION

FREIGHT LINE CONTROLLED FROM JUNEЕ NCCS " SYDNEY 2" BOARD  
PHONE No. 02 6924 9804  
EMERGENCY PHONE No. 02 6924 9863  
RADIO AREA CODE : NATIONAL TRAIN COMMUNICATION SYSTEM (NTCS)  
SUBURBAN LINES CONTROLLED FROM : RAIL OPERATIONS CENTRE  
RADIO AREA CODE : 054 (SEFTON PARK)

APPENDICES  
PLEASE SEE APPENDICES FOR POINTS OF NO RETURN, TERMINATING MOVEMENTS AND SIDING LENGTHS

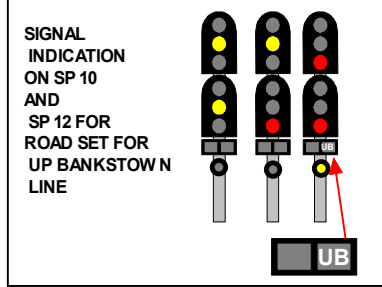
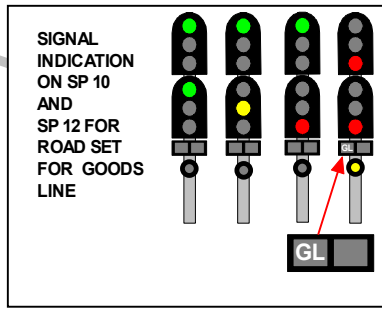


EW 418 DIST 21.222 KM CONTROLLED FROM JUNEЕ



BIRRONG

THIS SIGNAL MUST NOT BE PASSED AT STOP WITHOUT AUTHORITY FROM SIGNALLER



JOINS MAP BL 02