

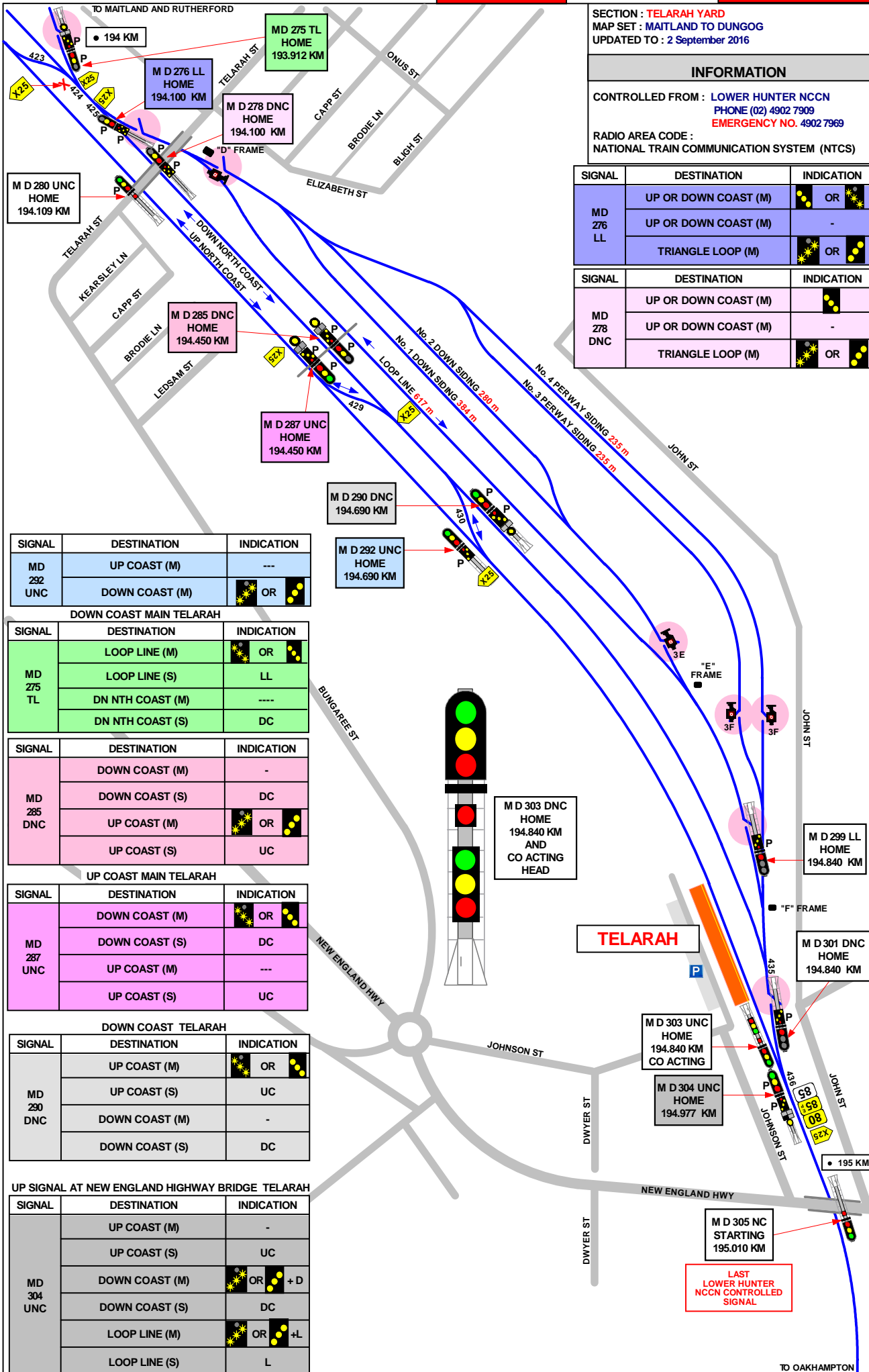
SECTION : TELARAH YARD
 MAP SET : MAITLAND TO DUNGO
 UPDATED TO : 2 September 2016

INFORMATION

CONTROLLED FROM : LOWER HUNTER NCCN
 PHONE (02) 4902 7909
 EMERGENCY NO. 4902 7969

RADIO AREA CODE :
 NATIONAL TRAIN COMMUNICATION SYSTEM (NTCS)

GRADIENT



SIGNAL	DESTINATION	INDICATION
MD 292 UNC	UP COAST (M)	---
	DOWN COAST (M)	OR

DOWN COAST MAIN TELARAH

SIGNAL	DESTINATION	INDICATION
MD 275 TL	LOOP LINE (M)	OR
	LOOP LINE (S)	LL
	DN NTH COAST (M)	----
MD 285 DNC	DOWN COAST (M)	-
	UP COAST (M)	OR

UP COAST MAIN TELARAH

SIGNAL	DESTINATION	INDICATION
MD 287 UNC	DOWN COAST (M)	OR
	DOWN COAST (S)	DC
	UP COAST (M)	---
	UP COAST (S)	UC

DOWN COAST TELARAH

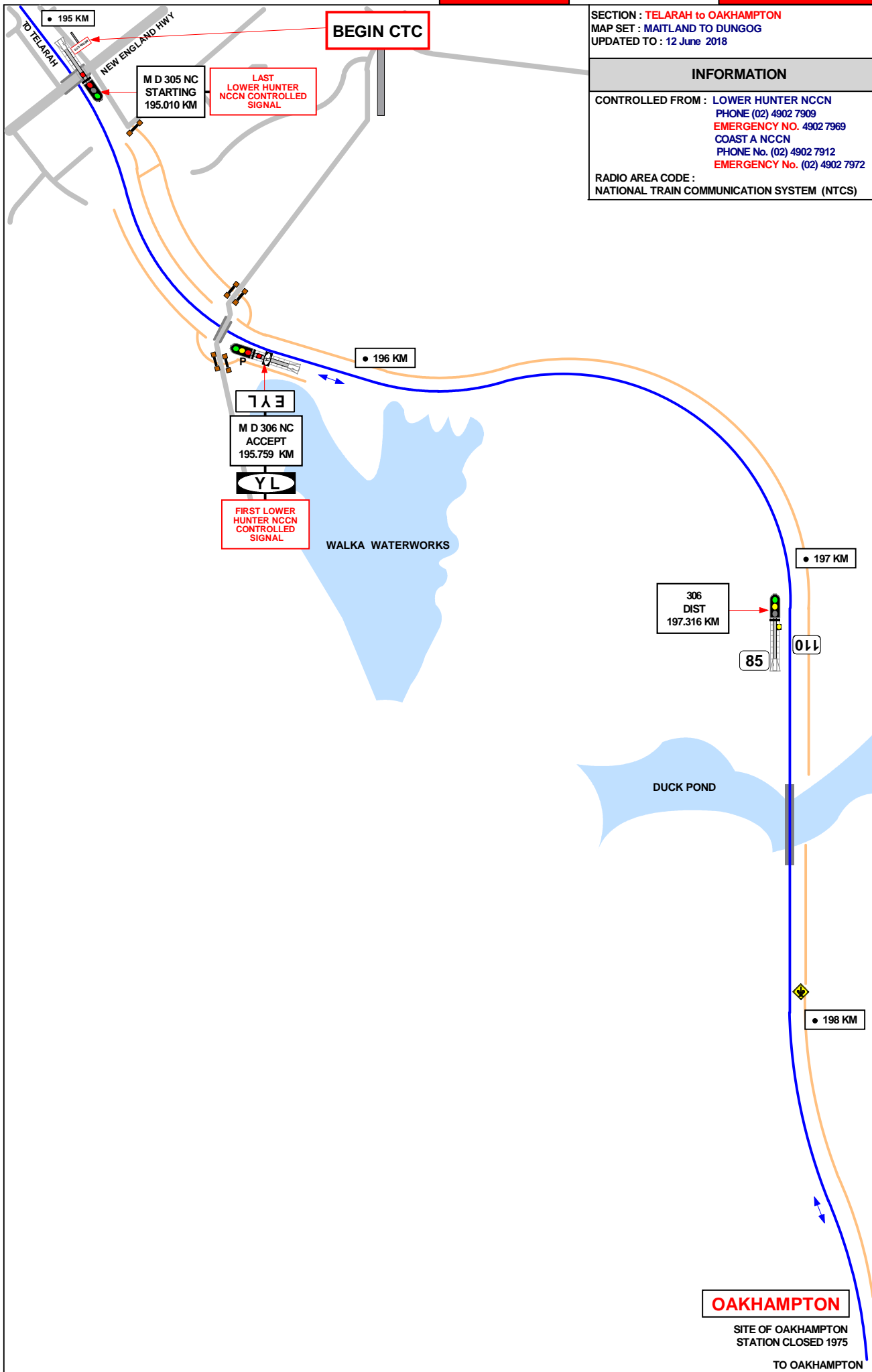
SIGNAL	DESTINATION	INDICATION
MD 290 DNC	UP COAST (M)	OR
	UP COAST (S)	UC
	DOWN COAST (M)	-
	DOWN COAST (S)	DC

UP SIGNAL AT NEW ENGLAND HIGHWAY BRIDGE TELARAH

SIGNAL	DESTINATION	INDICATION
MD 304 UNC	UP COAST (M)	-
	UP COAST (S)	UC
	DOWN COAST (M)	OR + D
	DOWN COAST (S)	DC
	LOOP LINE (M)	OR + L
	LOOP LINE (S)	L

1 IN 200

1 IN 110



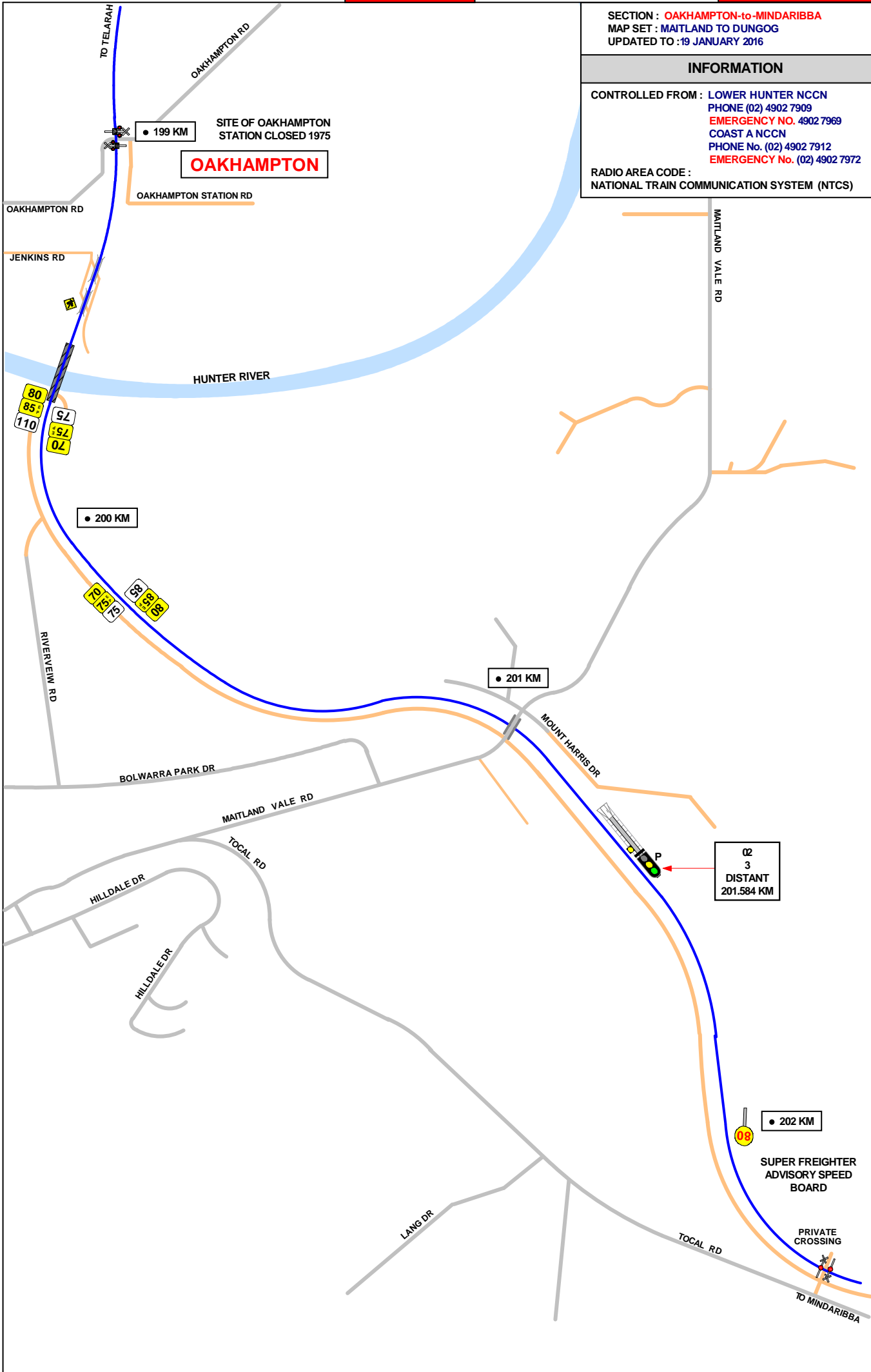
SECTION : TELARAH to OAKHAMPTON
 MAP SET : MAITLAND TO DUNGOG
 UPDATED TO : 12 June 2018

INFORMATION

CONTROLLED FROM : LOWER HUNTER NCCN
 PHONE (02) 4902 7909
 EMERGENCY NO. 4902 7969
 COAST A NCCN
 PHONE No. (02) 4902 7912
 EMERGENCY No. (02) 4902 7972

RADIO AREA CODE :
 NATIONAL TRAIN COMMUNICATION SYSTEM (NTCS)

GRADIENT	
1 IN 110	E
1 IN 80	
1 IN 80	
1 IN 88	LEVEL

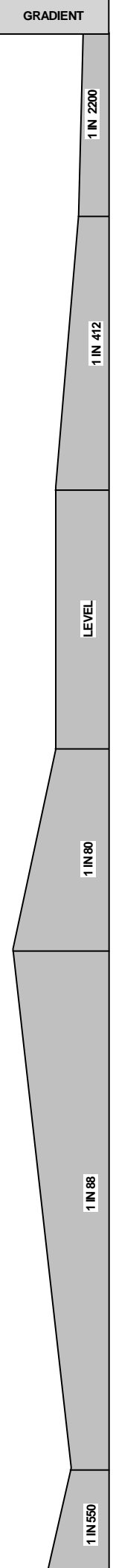


SECTION : OAKHAMPTON-to-MINDARIBBA
 MAP SET : MAITLAND TO DUNGOG
 UPDATED TO :19 JANUARY 2016

INFORMATION

CONTROLLED FROM : LOWER HUNTER NCCN
 PHONE (02) 4902 7909
 EMERGENCY NO. 4902 7969
 COAST A NCCN
 PHONE No. (02) 4902 7912
 EMERGENCY No. (02) 4902 7972

RADIO AREA CODE :
 NATIONAL TRAIN COMMUNICATION SYSTEM (NTCS)



SIGNAL	DESTINATION	INDICATION
02 3	MAIN LINE (M)	----
	LOOP LINE (S)	●● OR ●●●

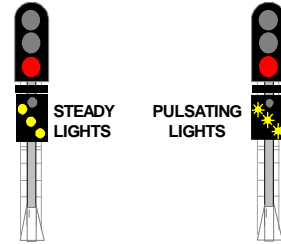
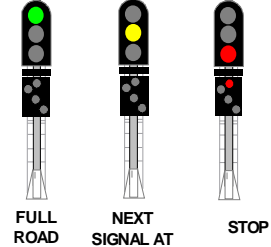
SECTION : MINDARIBBA to PATERSON
 MAP SET : MAITLAND TO DUNGOG
 UPDATED TO : 19 JANUARY 2016

GRADIENT

INFORMATION

CONTROLLED FROM : LOWER HUNTER NCCN
 PHONE (02) 4902 7909
 EMERGENCY NO. 4902 7969
 COAST A NCCN
 PHONE No. (02) 4902 7912
 EMERGENCY No. (02) 4902 7972

RADIO AREA CODE :
 NATIONAL TRAIN COMMUNICATION SYSTEM (NTCS)



DOWN MAIN TO LOOP LINE TO BE CROSSED AND STARTING SIGNAL WILL BE AT STOP

DOWN MAIN TO LOOP LINE TO DOWN MAIN AND ONLY WHEN STARTING SIGNAL IS CLEAR FOR CROSSING A TRAIN STANDING ON MAIN LINE OR RUNNING THROUGH THE LOOP

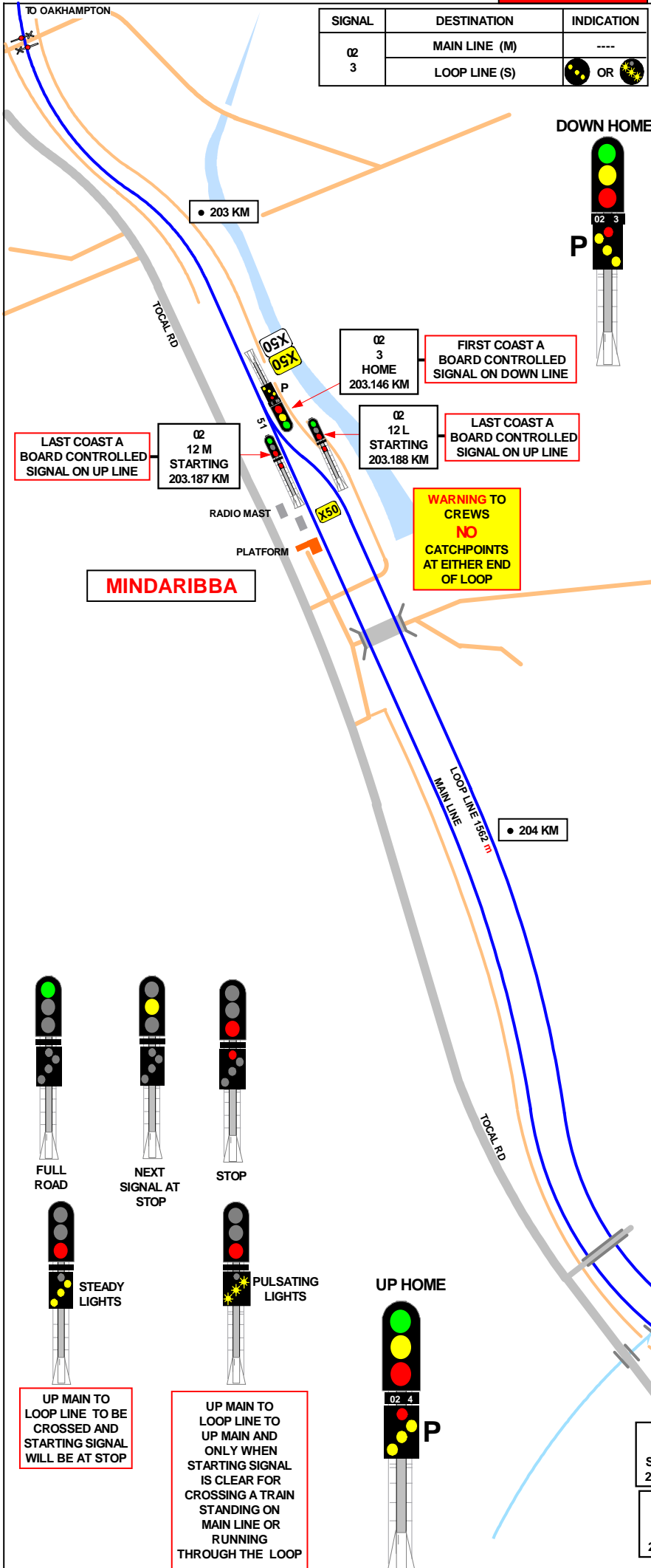
1 IN 550

1 IN 80

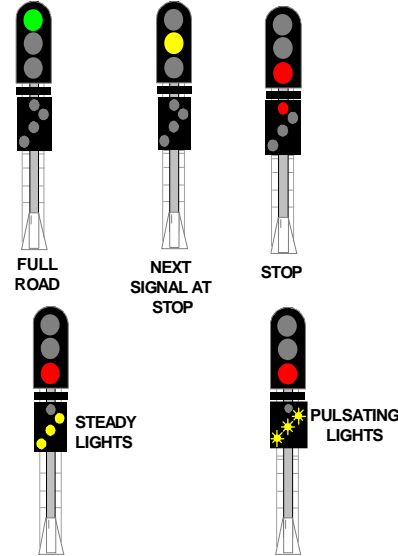
1 IN 120

LEVEL

1 IN 367

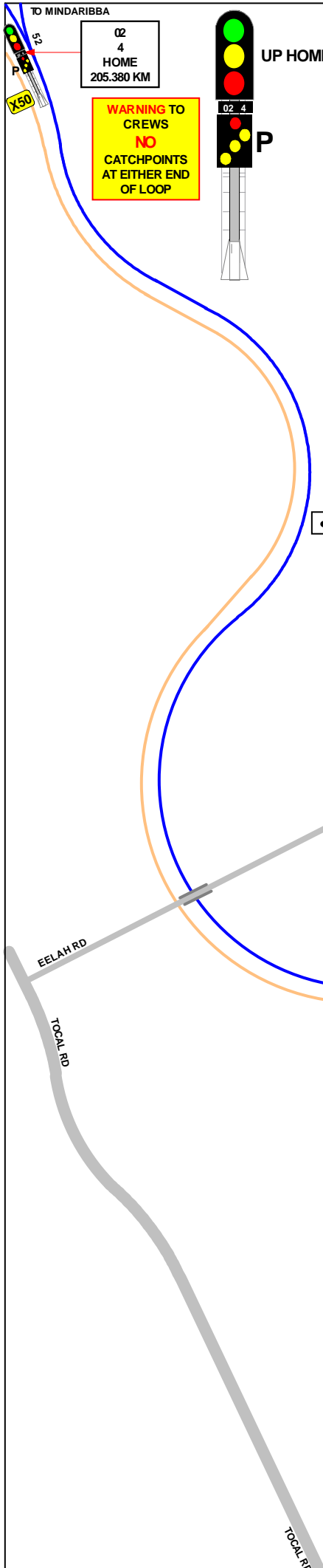


SIGNAL	DESTINATION	INDICATION
02 3	MAIN LINE (M)	----
	LOOP LINE (S)	●● OR ●●●



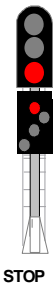
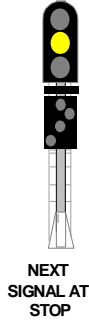
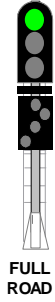
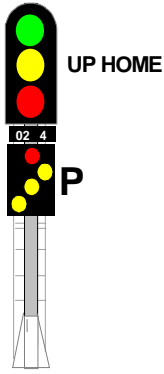
UP MAIN TO LOOP LINE TO BE CROSSED AND STARTING SIGNAL WILL BE AT STOP

UP MAIN TO LOOP LINE TO UP MAIN AND ONLY WHEN STARTING SIGNAL IS CLEAR FOR CROSSING A TRAIN STANDING ON MAIN LINE OR RUNNING THROUGH THE LOOP



02
4
HOME
205.380 KM

WARNING TO CREWS
NO
CATCHPOINTS
AT EITHER END
OF LOOP



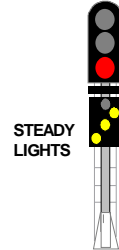
SECTION : MINDARIBBA to PATERSON
MAP SET : MAITLAND TO DUNGOG
UPDATED TO : 19 JANUARY 2016

INFORMATION

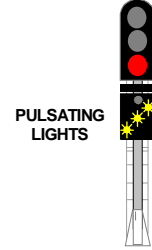
CONTROLLED FROM : COAST A NCCN
PHONE No. (02) 4902 7912
EMERGENCY No. (02) 4902 7972

RADIO AREA CODE :
NATIONAL TRAIN COMMUNICATION SYSTEM (NTCS)

SIGNAL	DESTINATION	INDICATION
02 4	MAIN LINE (M)	----
	LOOP LINE (S)	●● OR ●●●



UP MAIN TO LOOP LINE TO BE
CROSSED AND
STARTING SIGNAL
WILL BE AT STOP



UP MAIN TO LOOP LINE TO
UP MAIN AND
ONLY WHEN
STARTING SIGNAL
IS CLEAR FOR
CROSSING A TRAIN
STANDING ON
MAIN LINE OR
RUNNING
THROUGH THE LOOP

GRADIENT

- 1 IN 367
- 1 IN 80
- 1 IN 773
- E
- 1 IN 169
- 1 IN 137
- E
- 1 IN 220
- 1 IN 80

SECTION : MINDARIBBA to PATERSON
 MAP SET : MAITLAND TO DUNGOG
 UPDATED TO : 19 JANUARY 2016

INFORMATION

CONTROLLED FROM : COAST A NCCN
 PHONE No. (02) 4902 7912
 EMERGENCY No. (02) 4902 7972
 RADIO AREA CODE :
 NATIONAL TRAIN COMMUNICATION SYSTEM (NTCS)

SIGNAL	DESTINATION	INDICATION
03 3	LOOP LINE (S)	L
	MAIN LINE (S)	M

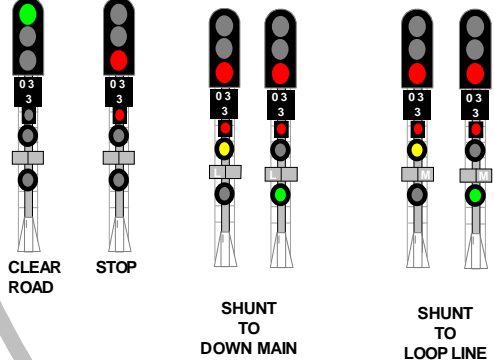
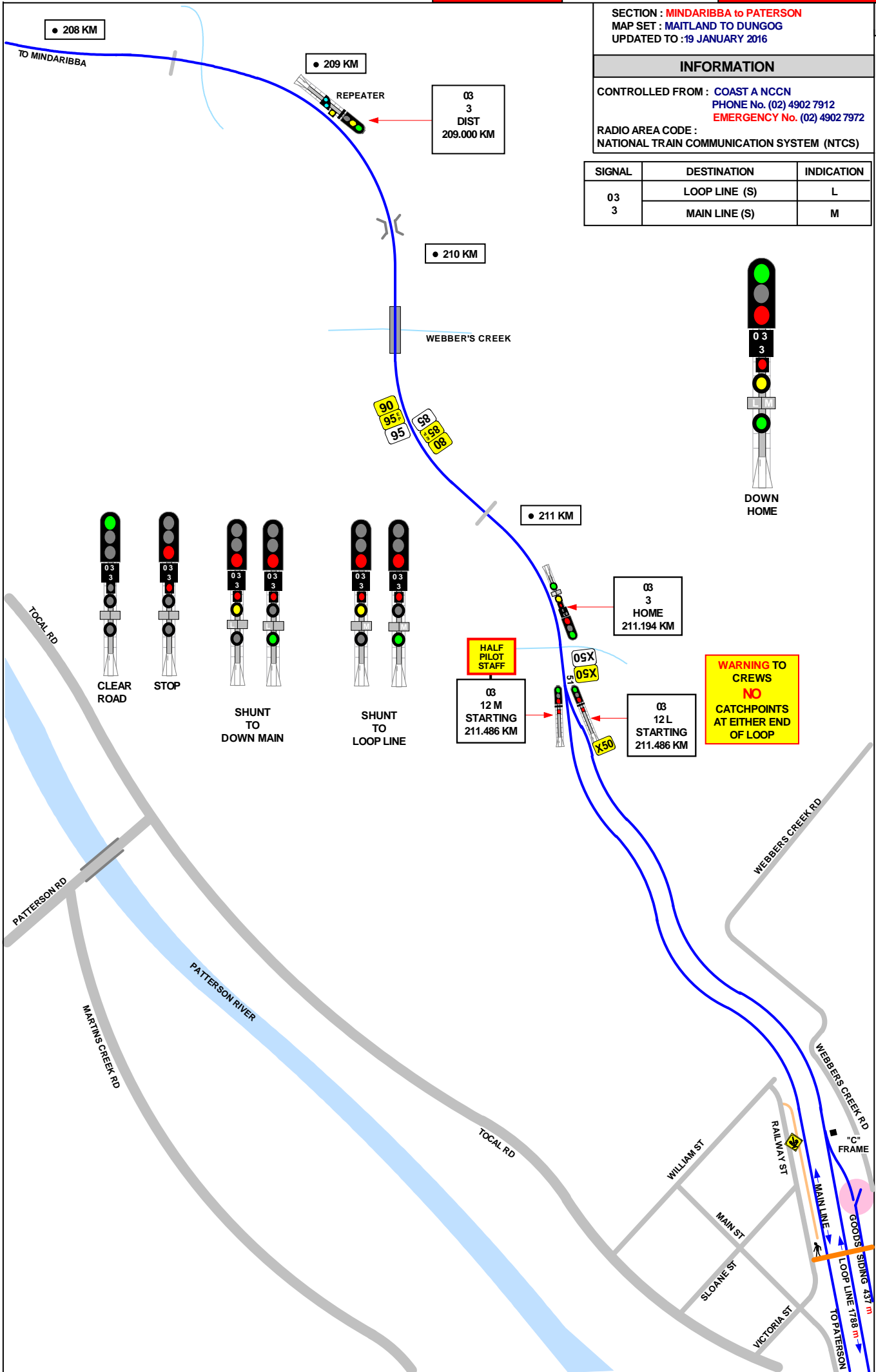
GRADIENT

1 IN 80

LEVEL

1 IN 220

1 IN 125



**WARNING TO CREWS
 NO
 CATCHPOINTS
 AT EITHER END
 OF LOOP**

SECTION : PATERSON
MAP SET : MAITLAND TO DUNGOG
UPDATED TO : 19 JANUARY 2016

GRADIENT

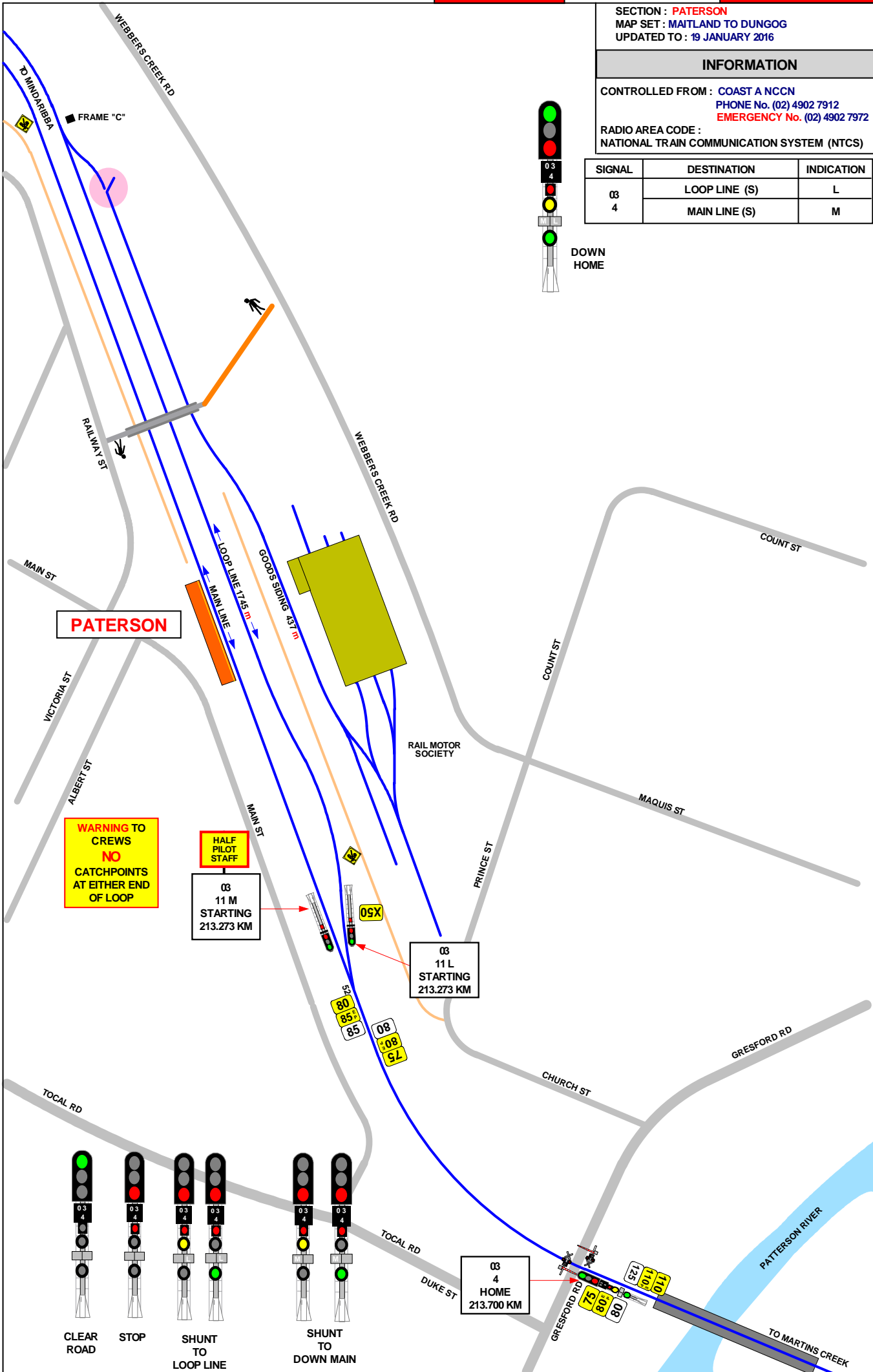
INFORMATION

CONTROLLED FROM : COAST A NCCN
PHONE No. (02) 4902 7912
EMERGENCY No. (02) 4902 7972
RADIO AREA CODE :
NATIONAL TRAIN COMMUNICATION SYSTEM (NTCS)

SIGNAL	DESTINATION	INDICATION
03 4	LOOP LINE (S)	L
	MAIN LINE (S)	M



DOWN HOME

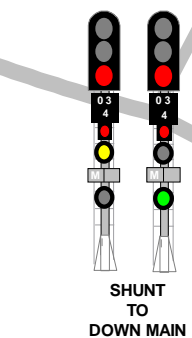
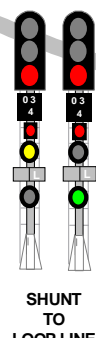
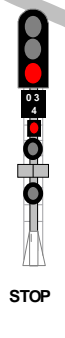
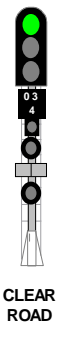


WARNING TO CREWS
NO
CATCHPOINTS
AT EITHER END
OF LOOP

HALF PILOT STAFF
03
11 M
STARTING
213.273 KM

03
11 L
STARTING
213.273 KM

03
4
HOME
213.700 KM



1 IN 125

E

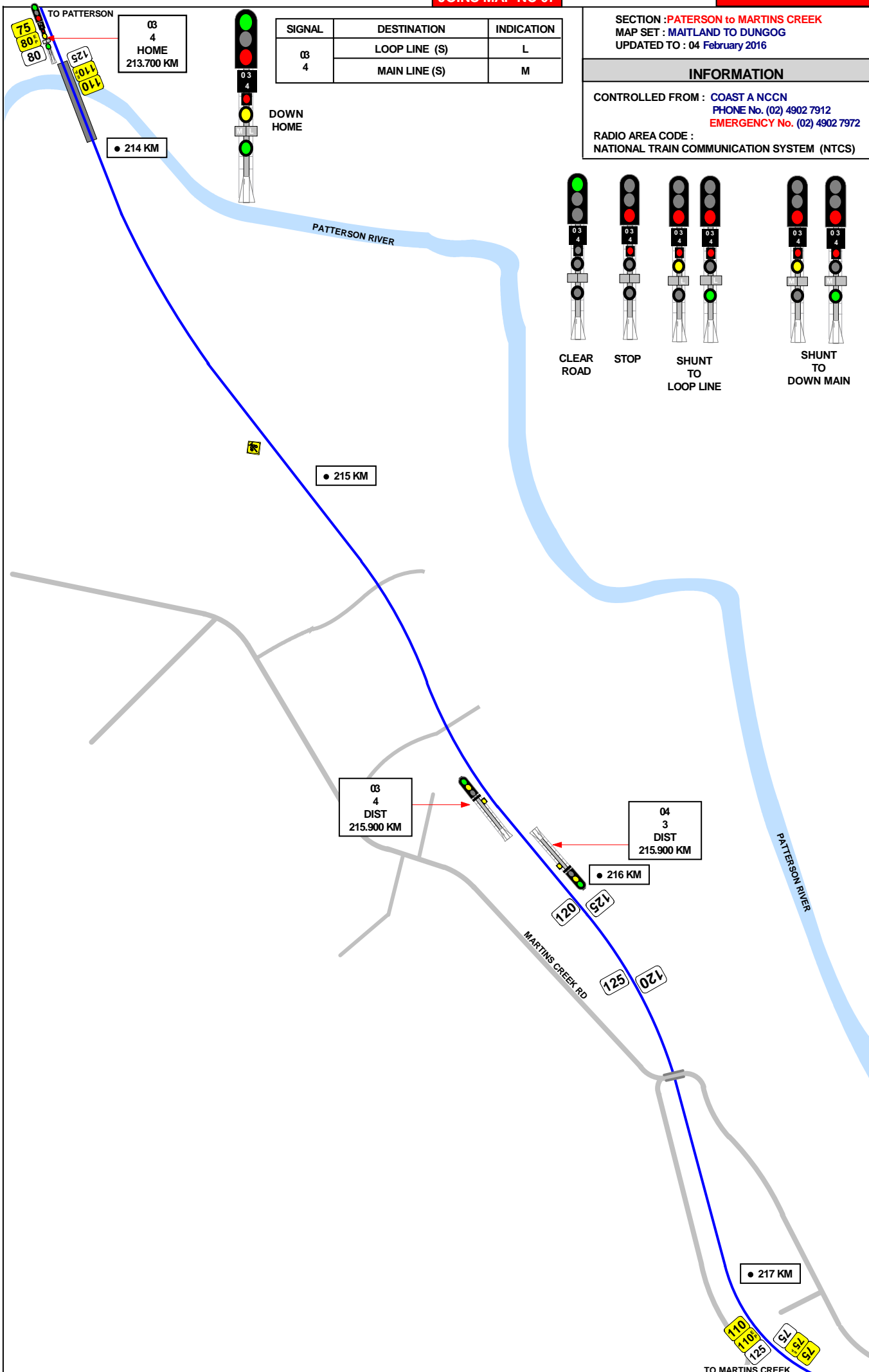
1 IN 157

1 IN 143

1 IN 330

E

1 IN 100



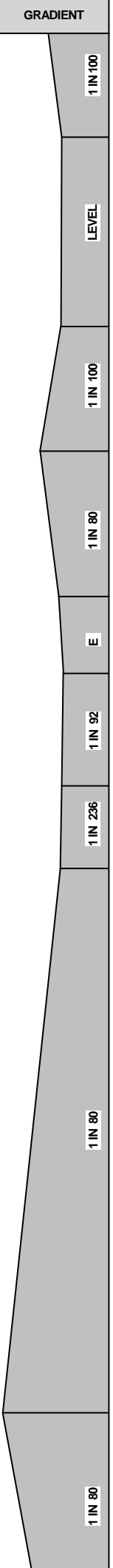
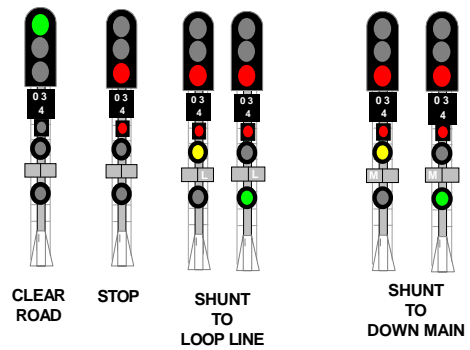
SIGNAL	DESTINATION	INDICATION
03 4	LOOP LINE (S)	L
	MAIN LINE (S)	M

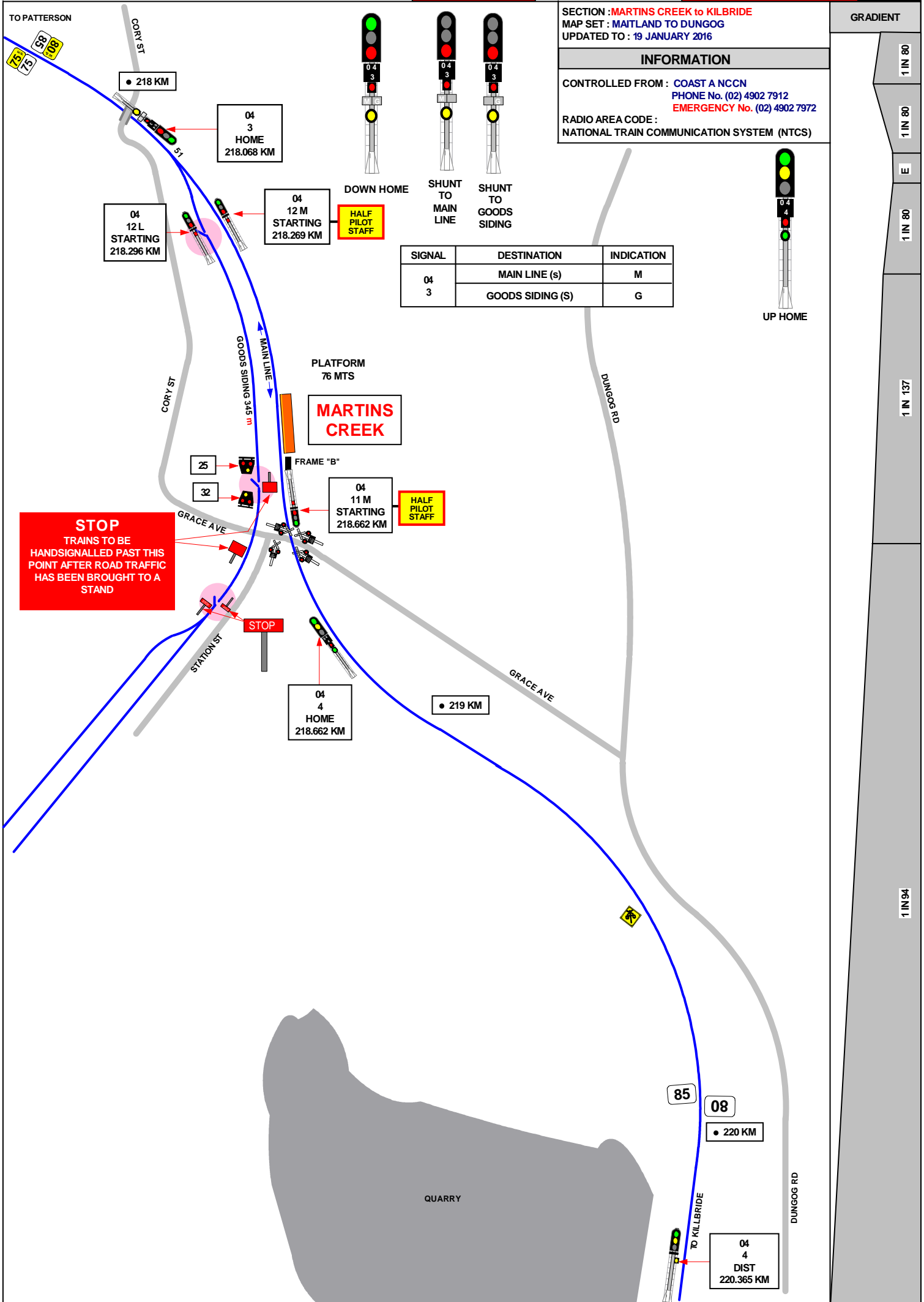
SECTION : PATERSON to MARTINS CREEK
 MAP SET : MATTLAND TO DUNGOG
 UPDATED TO : 04 February 2016

INFORMATION

CONTROLLED FROM : COAST A NCCN
 PHONE No. (02) 4902 7912
 EMERGENCY No. (02) 4902 7972

RADIO AREA CODE :
 NATIONAL TRAIN COMMUNICATION SYSTEM (NTCS)





SECTION : MARTINS CREEK to KILBRIDE
 MAP SET : MAITLAND TO DUNGOG
 UPDATED TO : 19 JANUARY 2016

INFORMATION

CONTROLLED FROM : COAST A NCCN
 PHONE No. (02) 4902 7912
 EMERGENCY No. (02) 4902 7972
 RADIO AREA CODE :
 NATIONAL TRAIN COMMUNICATION SYSTEM (NTCS)

GRADIENT

1 IN 80

1 IN 80

E

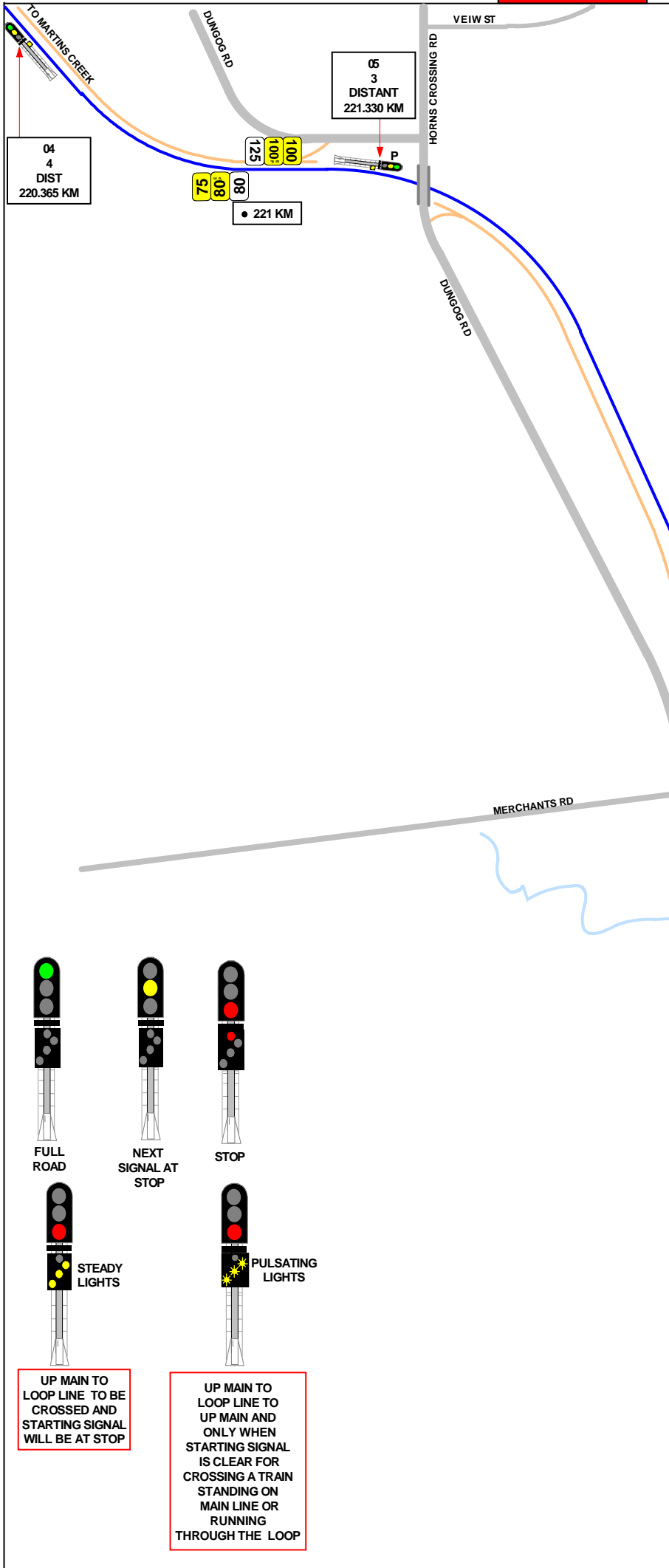
1 IN 80

1 IN 137

1 IN 94

SIGNAL	DESTINATION	INDICATION
04 3	MAIN LINE (s)	M
	GOODS SIDING (S)	G

STOP
 TRAINS TO BE
 HANDSIGNALLED PAST THIS
 POINT AFTER ROAD TRAFFIC
 HAS BEEN BROUGHT TO A
 STAND



SECTION : MARTINS CREEK to KILBRIDE
 MAP SET : MAITLAND TO DUNGOG
 UPDATED TO : 28 OCTOBER 2014

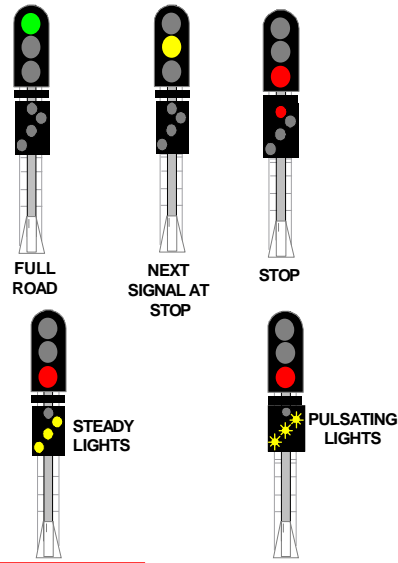
INFORMATION

CONTROLLED FROM : COAST A NCCN
 PHONE No. (02) 4902 7912
 EMERGENCY No. (02) 4902 7972
 RADIO AREA CODE :
 NATIONAL TRAIN COMMUNICATION SYSTEM (NTCS)

SIGNAL	DESTINATION	INDICATION
05 3	MAIN LINE (M)	----
	LOOP LINE (S)	OR



DOWN HOME



UP MAIN TO LOOP LINE TO BE CROSSED AND STARTING SIGNAL WILL BE AT STOP

UP MAIN TO LOOP LINE TO UP MAIN AND ONLY WHEN STARTING SIGNAL IS CLEAR FOR CROSSING A TRAIN STANDING ON MAIN LINE OR RUNNING THROUGH THE LOOP

WARNING TO CREWS
NO
 CATCHPOINTS AT EITHER END OF LOOP

KILBRIDE

GRADIENT

1 IN 94

E

1 IN 264

1 IN 80

LEVEL

1 IN 88

SECTION : KILBRIDE TO HILLDALE
MAP SET : MAITLAND TO DUNGOG
UPDATED TO : 19 JANUARY 2016

GRADIENT

INFORMATION

CONTROLLED FROM : COAST A NCCN
PHONE No. (02) 4902 7912
EMERGENCY No. (02) 4902 7972
RADIO AREA CODE :
NATIONAL TRAIN COMMUNICATION SYSTEM (NTCS)

SIGNAL	DESTINATION	INDICATION
05 4	MAIN LINE (M)	----
	LOOP LINE (S)	OR

1 IN 88

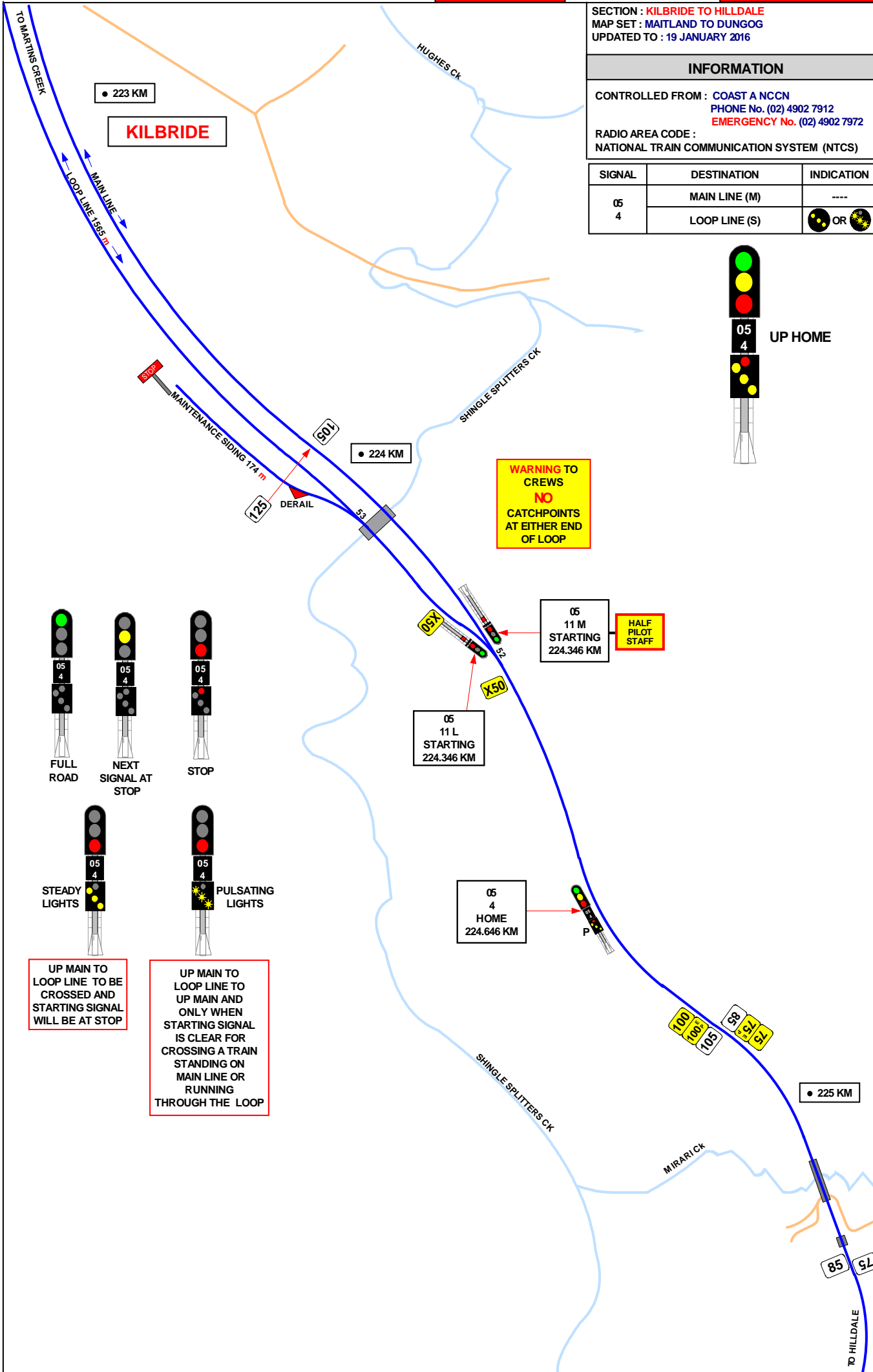
1 IN 440

LEVEL

1 IN 83

1 IN 200

1 IN 80



UP HOME

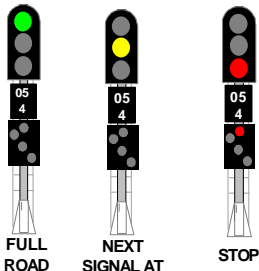
WARNING TO CREWS
NO CATCHPOINTS AT EITHER END OF LOOP

05
11 M
STARTING
224.346 KM

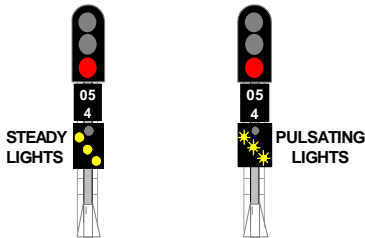
HALF PILOT STAFF

05
11 L
STARTING
224.346 KM

05
4
HOME
224.646 KM



FULL ROAD
NEXT SIGNAL AT STOP
STOP



STEADY LIGHTS
PULSATING LIGHTS

UP MAIN TO LOOP LINE TO BE
CROSSED AND
STARTING SIGNAL
WILL BE AT STOP

UP MAIN TO LOOP LINE TO
UP MAIN AND
ONLY WHEN
STARTING SIGNAL
IS CLEAR FOR
CROSSING A TRAIN
STANDING ON
MAIN LINE OR
RUNNING
THROUGH THE LOOP

• 225 KM

TO KILBRIDE

MIRRI CK

• 226 KM

HILLDALE RD

HILLDALE

PLATFORM
5 MTS

05
4
DISTANT
227.080 KM

HILLDALE RD

• 227 KM

75
75
001
02

MAIN LINE

DUNGOG RD

HILLDALE RD

• 228 KM

RADIO MAST

70
70
75
58
58
08

WALLAROBBA TUNNEL
303 MTS

DUNGOG RD

TO WALLAROBBA

GRADIENT

1 IN 80

1 IN 120

1 IN 80

SECTION : KILBRIDE TO HILLDALE
MAP SET : MAITLAND TO DUNGOG
UPDATED TO : 19 JANUARY 2016

INFORMATION

CONTROLLED FROM : COAST A NCCN
PHONE No. (02) 4902 7912
EMERGENCY No. (02) 4902 7972
RADIO AREA CODE :
NATIONAL TRAIN COMMUNICATION SYSTEM (NTCS)

SECTION : HILLDALE TO WALLAROBBA
MAP SET : MAITLAND TO DUNGOG
UPDATED TO : 19 JANUARY 2016

INFORMATION

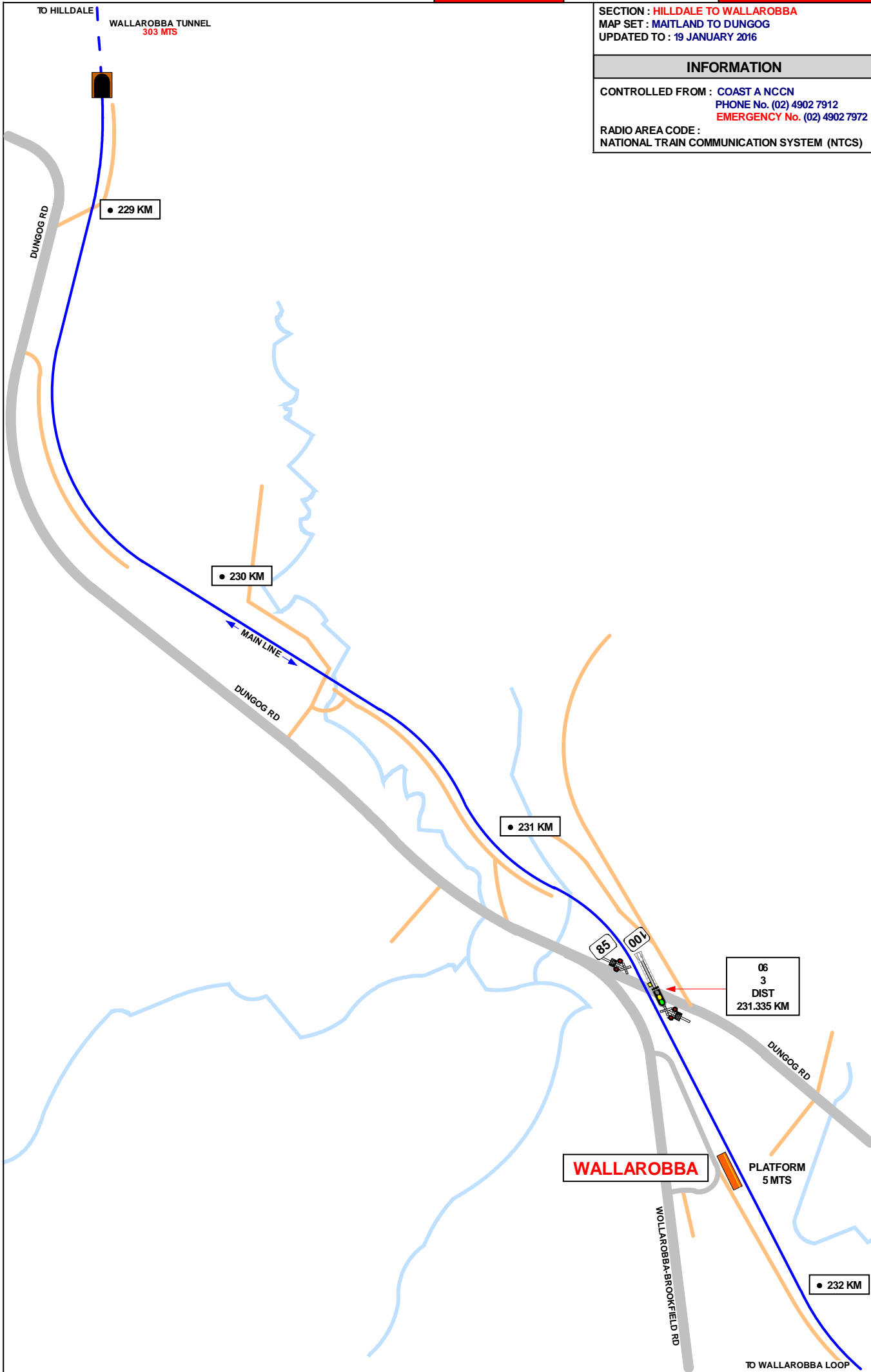
CONTROLLED FROM : COAST A NCCN
PHONE No. (02) 4902 7912
EMERGENCY No. (02) 4902 7972
RADIO AREA CODE :
NATIONAL TRAIN COMMUNICATION SYSTEM (NTCS)

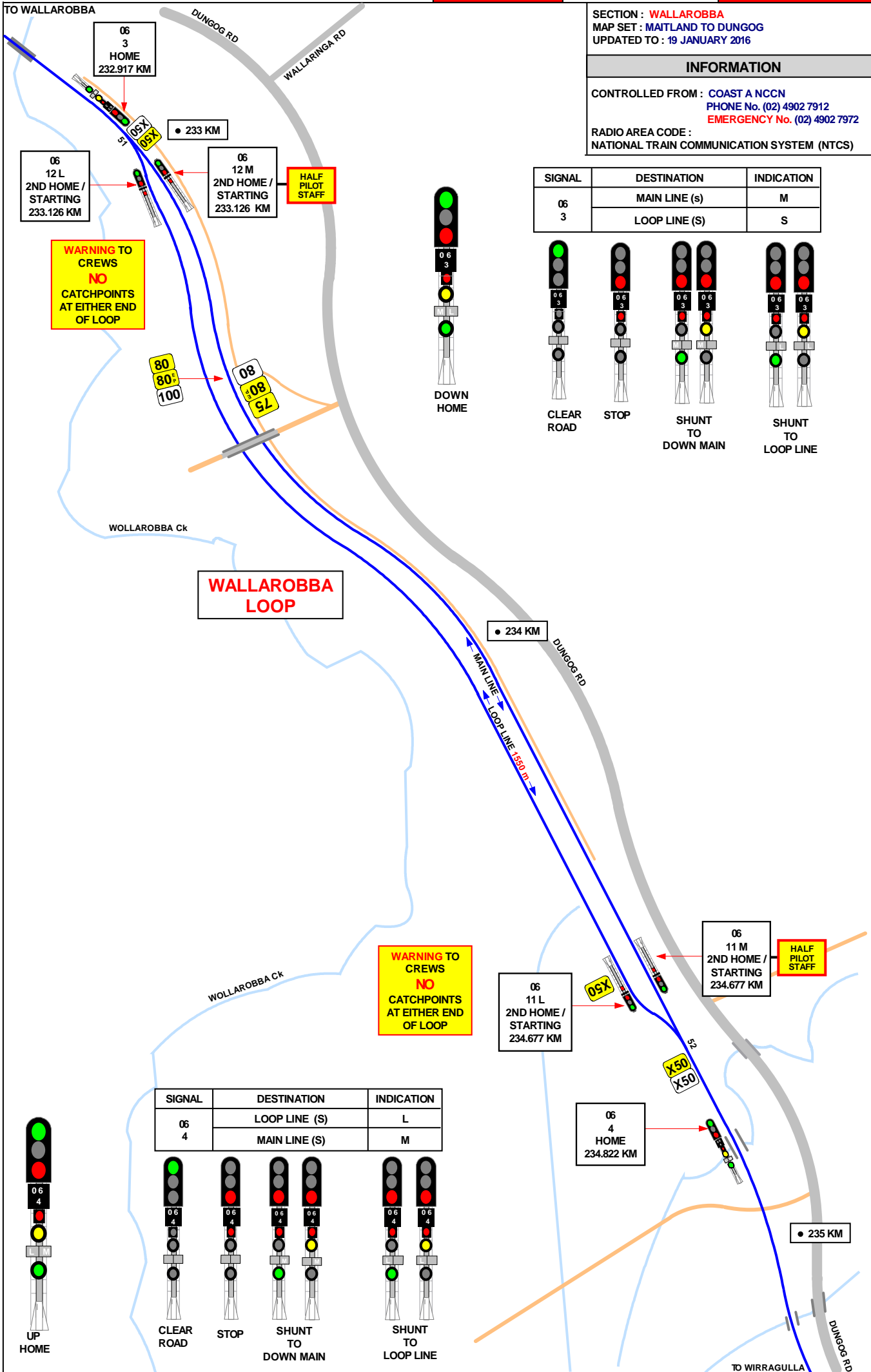
GRADIENT

1 IN 80

1 IN 300

LEVEL



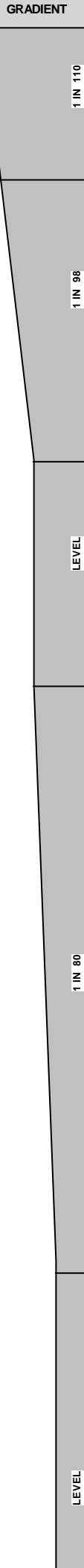


SECTION : WALLAROBBA
 MAP SET : MAITLAND TO DUNGOG
 UPDATED TO : 19 JANUARY 2016

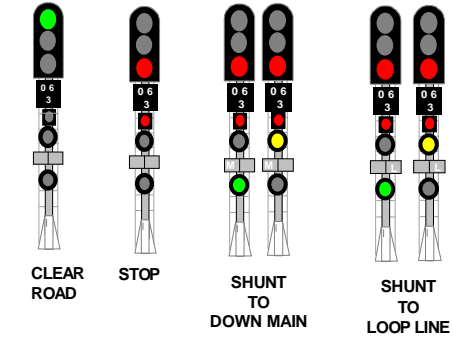
INFORMATION

CONTROLLED FROM : COAST A NCCN
 PHONE No. (02) 4902 7912
 EMERGENCY No. (02) 4902 7972

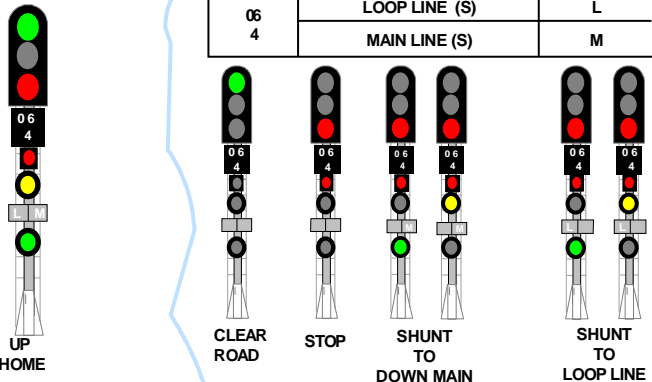
RADIO AREA CODE :
 NATIONAL TRAIN COMMUNICATION SYSTEM (NTCS)



SIGNAL	DESTINATION	INDICATION
06 3	MAIN LINE (S)	M
	LOOP LINE (S)	S



SIGNAL	DESTINATION	INDICATION
06 4	LOOP LINE (S)	L
	MAIN LINE (S)	M

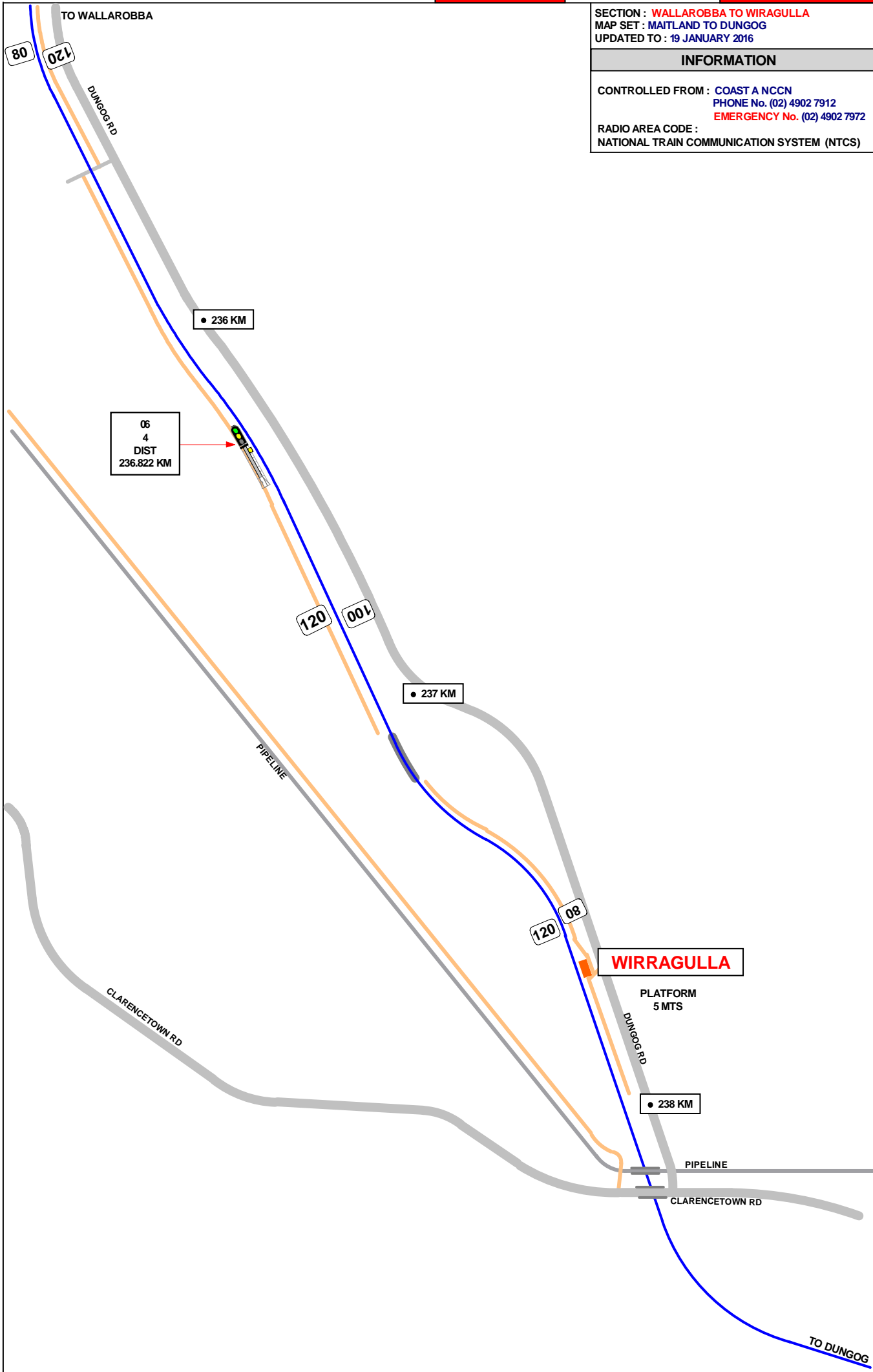


SECTION : WALLAROBBA TO WIRAGULLA
MAP SET : MAITLAND TO DUNGOG
UPDATED TO : 19 JANUARY 2016

INFORMATION

CONTROLLED FROM : COAST A NCCN
PHONE No. (02) 4902 7912
EMERGENCY No. (02) 4902 7972
RADIO AREA CODE :
NATIONAL TRAIN COMMUNICATION SYSTEM (NTCS)

GRADIENT

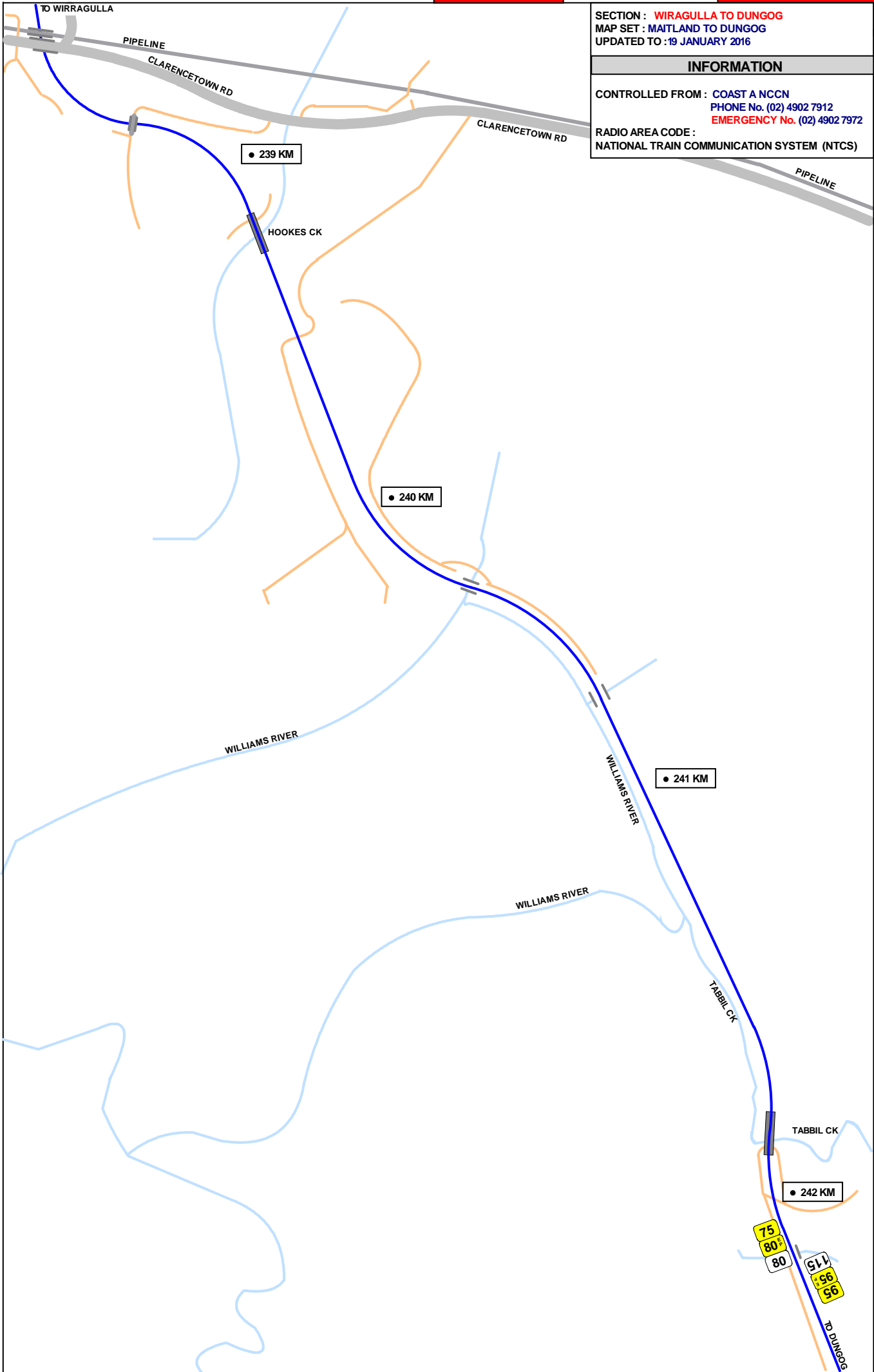


1 IN 80

LEVEL

1 IN 90

1 IN 150



SECTION : WIRAGULLA TO DUNGOG
 MAP SET : MAITLAND TO DUNGOG
 UPDATED TO : 19 JANUARY 2016

INFORMATION

CONTROLLED FROM : COAST A NCCN
 PHONE No. (02) 4902 7912
 EMERGENCY No. (02) 4902 7972

RADIO AREA CODE :
 NATIONAL TRAIN COMMUNICATION SYSTEM (NTCS)

GRADIENT

1 IN 80

LEVEL

1 IN 110

1 IN 100

E

1 IN 1100

SECTION : WIRAGULLA TO DUNGOG
 MAP SET : MAITLAND TO DUNGOG
 UPDATED TO : 19 JANUARY 2016

INFORMATION

CONTROLLED FROM : COAST A NCCN
 PHONE No. (02) 4902 7912
 EMERGENCY No. (02) 4902 7972
 RADIO AREA CODE :
 NATIONAL TRAIN COMMUNICATION SYSTEM (NTCS)

GRADIENT

LEVEL

1 IN 80

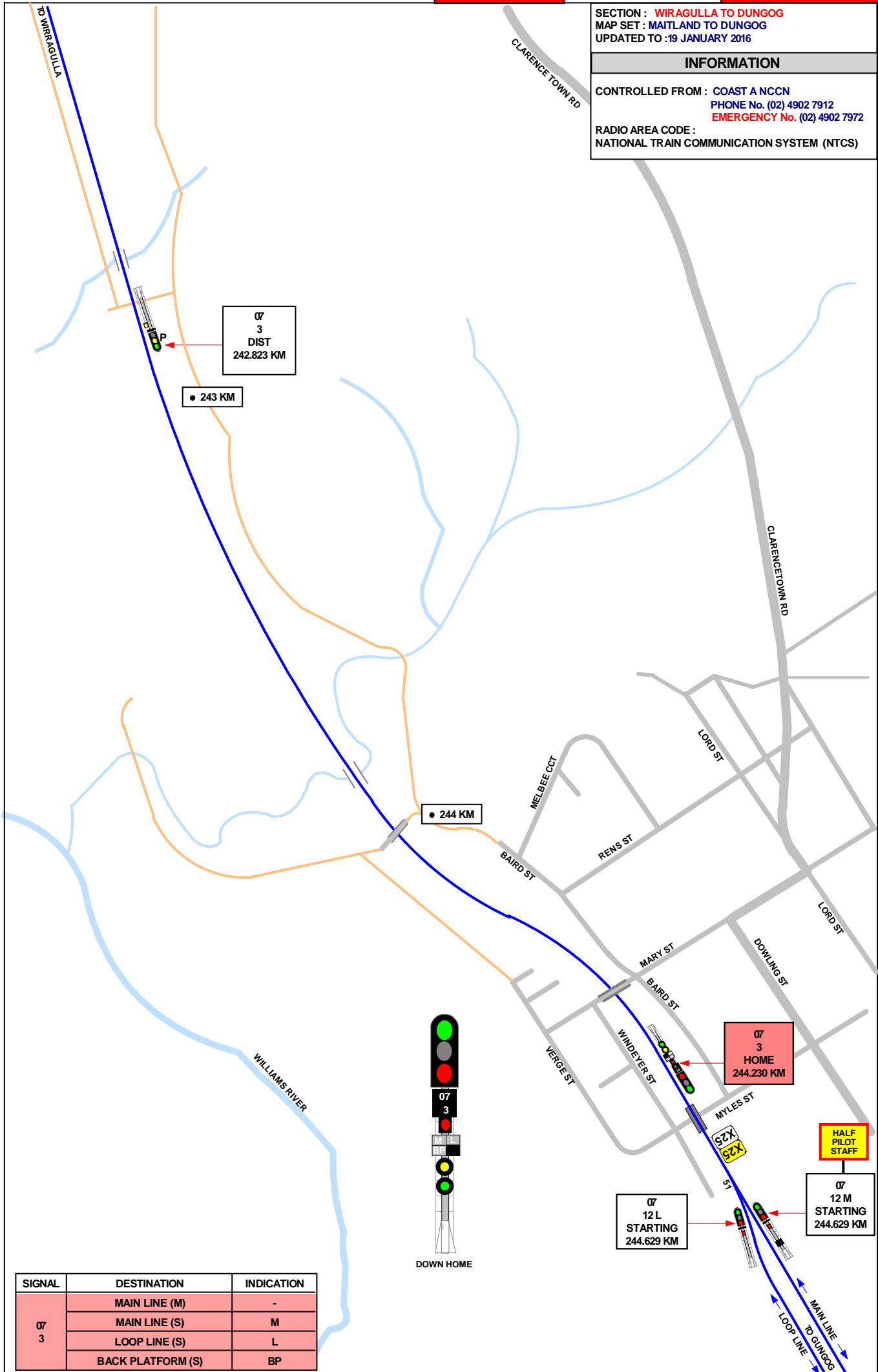
1 IN 330

1 IN 88

E

1 IN 116

1 IN 264



07
3
DIST
242.823 KM

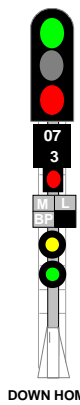
● 243 KM

● 244 KM

07
3
HOME
244.230 KM

07
12 L
STARTING
244.629 KM

07
12 M
STARTING
244.629 KM



SIGNAL	DESTINATION	INDICATION
07 3	MAIN LINE (M)	-
	MAIN LINE (S)	M
	LOOP LINE (S)	L
	BACK PLATFORM (S)	BP

SECTION : DUNGOG
 MAP SET : MAITLAND TO DUNGOG
 UPDATED TO : 19 JANUARY 2016

INFORMATION

CONTROLLED FROM : COAST A NCCN
 PHONE No. (02) 4902 7912
 EMERGENCY No. (02) 4902 7972
 RADIO AREA CODE :
 NATIONAL TRAIN COMMUNICATION SYSTEM (NTCS)

SIGNAL	DESTINATION	INDICATION
07 3	MAIN LINE (M)	-
	MAIN LINE (S)	M
	LOOP LINE (S)	L
	BACK PLATFORM (S)	BP

SIGNAL	DESTINATION	INDICATION
07 21	MAIN LINE (M)	-
	MAIN LINE (S)	M
	BACK PLATFORM (S)	BP

SIGNAL	DESTINATION	INDICATION
07 22	MAIN LINE (M)	-
	MAIN LINE (S)	M
	LOOP LINE (S)	L
	BACK PLATFORM (S)	BP

