

# Using Railway Track Signals

## Introduction

Railway Track Signals are used to warn Drivers and Track Vehicle Operators. The number of Railway Track Signal explosions indicates what Drivers and Track Vehicle Operators must do.

Except in emergencies, Railway Track Signals must be used only by Qualified Workers.

## Interpreting Railway Track Signals

<i>Number of explosions</i>	<i>Drivers and Track Vehicle Operators response</i>
One	Sound one long whistle. Reduce speed. Look for any warning signals.
Two	Sound one long whistle. Immediately reduce speed to 25km/h. Be prepared to stop short of obstructions.
Three	Sound one long whistle. Stop immediately.

## Using Railway Track Signals

### Placing Railway Track Signals



#### WARNING

Unless there is no practicable alternative, Railway Track Signals must not be used:

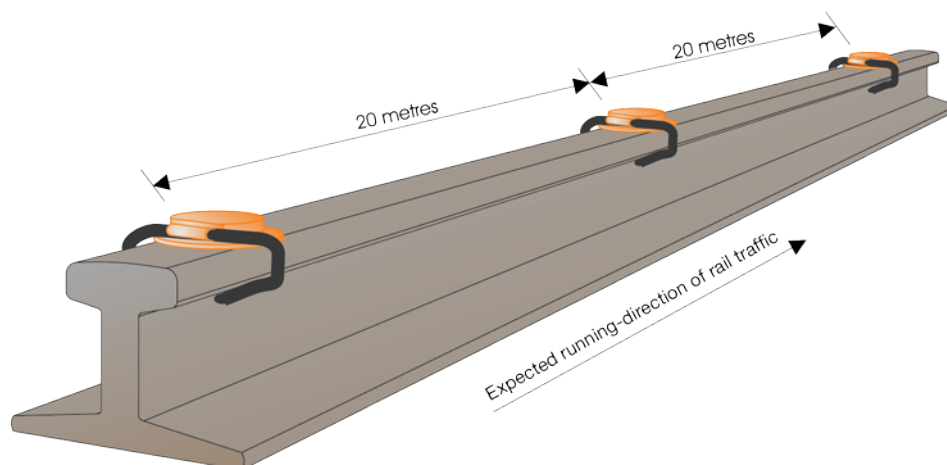
- underground, or
- in tunnels, or
- in steep-sided cuttings.

Railway Track Signals must never be used within 20m of workers or a passenger platform.

#### *Qualified Worker*

1. Place Railway Track Signals on the right-hand rail in the expected running-direction of rail traffic.
2. If using more than one Railway Track Signal at a location, place the Railway Track Signals 20m apart.
3. If used at a fixed signal, STOP sign or BLOCK POST sign, the first Railway Track Signal must be placed within 20m beyond the signal, STOP sign or BLOCK POST sign.
4. Place Railway Track Signals centrally on the railhead. Face the Railway Track Signal clasps towards the expected direction of rail traffic approach.
5. Bend the clasps around the railhead.

## Using Railway Track Signals



**FIGURE 1:** Example of Railway Track Signal placement

### Storing Railway Track Signals

#### *Qualified Worker*

1. Return unused Railway Track Signals to their plastic containers.
2. Keep packaged Railway Track Signals in a secured place.
3. Keep the door of the storage location locked when the location is unattended.




---

#### **NOTE**

Do not use Railway Track Signals after their expiry date.

---

## Using Railway Track Signals

### Dealing with failed Railway Track Signals

If Railway Track Signals do not explode when run over by rail traffic:

- leave failed Railway Track Signals on the rail, and
- report the failure immediately to a supervisor, and
- if necessary, fix new Railway Track Signals on the railhead.

### Network Procedures

*Nil*

### Effective date

29 April 2017