

Lookout Working Worksite Protection for Wollongong Yard routine network maintenance activities

DOCUMENT NO.	D2023/7919		
WORK DESCRIPTION	Routine network maintenance activities		
WPP Number	SC29B 11556	SAP Code	
SCOPE:	<p>This SWI is applicable for the worksite protection arrangements using lookout working concerning routine network maintenance, defect management and repair of assets within the limits specified below and in the attached plan.</p> <p>Work activities include:</p> <ul style="list-style-type: none"> Routine preventative and corrective work such as inspections and maintenance as appropriate for the type of protection being applied as part of this plan. 		
AUTHORISATIONS:	<p>Protection Officer: Protection Officer Level 1 or higher Lookout: Engineering Hand signaller Level 1 or higher or Protection Officer Level 1 or higher.</p>		
SAFETY CONTROLS: Lookout working arrangements	<p>The nominated worksite location for Lookout Working includes the Down Illawarra, Up Illawarra, No. 1 Up Siding, No. 2 Up Siding, No. 3 Up Siding, No.1 Down Siding, Down Bay & Down Refuge Line between WG 475 D and WG 406 D Signal.</p> <p>The nominated worksite location for Lookout Working is a moving worksite, where workers are working along the track within the limits of the nominated worksite location up to the where the Lookout is established.</p> <p>As work moves along the track, the Protection Officer must assess the new location and:</p> <ul style="list-style-type: none"> Establish and/or re-establish Lookouts as required to watch for approaching rail traffic from all entry points Designate and instruct which safe places the workers are to use as the work is completed along the work route within the worksite limits. 		
PRESTART REQUIREMENTS:	<p>Protection Officer assessment checklist must be completed before instructions in this SWI are followed. Tools and equipment required:</p> <ul style="list-style-type: none"> Protection Officer requires a phone to contact the Signaller. Lookouts require a high-visibility arm sleeve and a whistle/horn. 		
FURTHER INFORMATION:	<p><i>NWT 300 Planning work in the Rail Corridor</i></p> <p><i>NWT 310 Lookout Working</i></p> <p><i>NPR 711 Using Lookouts</i></p> <p><i>NPR 751 Calculating Minimum Warning Time</i></p> <p><i>NPR 712 Protecting work from rail traffic on adjacent lines</i></p> <p><i>NGE 200 Walking in the Danger Zone</i></p> <p><i>NLA 410 Sutherland - Wollongong</i></p> <p><i>NLA 416 Wollongong</i></p> <p><i>NLA 418 Wollongong – Bomaderry (Nowra)</i></p> <p><i>Lookout Working Prohibited Locations Register</i></p>		

Protection Officer assessment checklist

Protection Officer's name:		Yes (Tick if Yes)
This document is still current at the time of its application? (Up to 12 months from the document issue date)		
SWI details and protection arrangements have been reviewed and validated for the assessed worksite location, including: <ul style="list-style-type: none"> On-site safety assessment has been completed for relevancy of works being undertaken The required protection details, environment and tasks are unchanged from the details of this SWI 		
The Protection Officer and Qualified Workers deploying qualifications are current and have practiced in the last 6 months. If not practiced, then a Rail Safety Coach must be contacted for guidance.		
Corridor Safety Number	Protection Officer Signature	Date

**Warning**

If an above item does not apply, the Protection Officer must not use this Safe Work Instruction. A new worksite protection plan must be completed in accordance with NRF 014 Worksite Protection Pre-work briefing and NRF 015 Worksite Protection Plan.

Safe Work Instruction

Lookout Working Worksite Protection for Wollongong Yard routine network maintenance activities



Worksite Protection Pre-work Briefing

Briefing date: / /

Protection Officer Details

name signature contact No.

Work location:

Scope of work:

Worksite protection: Refer to Worksite Protection Plan for details

Hazards (e.g. Site specific hazards identified, including physical environment, human errors, plant and equipment)	Controls (to be implemented to eliminate or reduce the risk to the lowest practicable level)	Person responsible for Control
<ul style="list-style-type: none"> Struck by rail traffic 	<p>Lookouts must be trained and competent to perform lookout duties.</p> <p>Lookouts must be rotated if performing lookout for extended periods of time</p> <p>Workers to remain within worksite limits as set out in this procedure.</p> <p>Lookouts must be placed as per protection plan on page 8.</p> <p>Workers are to stop work and move to a safe place immediately on being warned by the lookouts</p>	Protection Officer & Lookout
<ul style="list-style-type: none"> Live adjacent lines 	<p>Lookouts must provide warning to workers when rail traffic is approaching from the adjacent line in either direction.</p>	Protection Officer & Lookout
Two - way running / multiple entry points into worksite	<p>One Lookout placed watching each direction before work starts. Lookouts are to warn workers of approaching rail traffic, including rail traffic entering or travelling within the worksite. Workers are to stop work and move to a safe place.</p>	Protection Officer & Lookout
Obstruction to Minimum Sighting Distance	<p>Lookouts must provide warning to the workers whenever their line of sight is obstructed by passing rail traffic. Workers must stop work and move to a safe place and reassess positioning and method</p>	Protection Officer & Lookout
Adjoining/Surrounding Worksites	<p>Lookouts must have two independent audible warning devices that can be heard by workers over any noise generated by adjoining/surrounding worksites.</p> <p>Lookouts are to provide warning if their line of sight is obstructed by adjoining/surrounding worksites.</p>	Protection Officer & Lookout
<p>Access to / Egress from worksite</p> <p>Slips, trips, falls and hazards carrying equipment</p>	<p>Access and egress points must be agreed prior to entering the danger zone, consideration should be given to ease of access and safest possible entry and exit points.</p> <p>Protection Officer will assess and instruct when it is safe for workers to use <i>NGE 200 Walking in the Danger Zone</i> to move to the worksite or safe place.</p>	All

Mobile phone	Mobile phones use is not permitted in the danger zone unless being used by maintenance staff for critical maintenance communications or recording of defects.	All

Safe Work Instruction

Lookout Working Worksite Protection for Wollongong Yard routine network maintenance activities



Workplace Supervisor Details

name contact No.

Emergency assembly point: Access Gate SWMS/SWI Ref #:

First Aid kit location: Sydney Trains work vehicle First Aider:

Workplace Supervisor Acknowledgement

The Workplace Supervisor acknowledges that all identified WHS and rail safety hazards have the appropriate controls in place to manage and/or eliminate the hazards.

Yes signature

Participant Acknowledgement

NOTE: Recipients of the briefing are to question the Briefer if they don't understand any part of this briefing.

All workers listed below acknowledge that they:

- 1. have been inducted to the site
2. are free from the effects of alcohol/drugs/fatigue
3. hold the applicable and current Rail Safety Worker Authorisation, trade licence and/or induction record e.g. Construction Industry Induction
4. wear the appropriate Personal Protective Equipment (PPE)
5. have been briefed on the contents of the Worksite Protection Plan
6. have been shown the Worksite Protection Plan diagram
7. understand the kinds and limits of worksite protection in place
8. have been briefed about any new hazards and controls identified during the final site inspection (final site inspection must be conducted immediately before commencing work)

Mark each check box below with a tick [x] if the item applies or a cross [x] if the item does not apply.

- have been informed of the requirements of the electrical permit (if required)
have been briefed on the SWMS/SWIs/documentated safe work practice for the job
have been instructed in the controls recorded in this document and SWMS/SWIs
have been made aware of any hazardous materials/substances on site
have been briefed on Safety Data Sheets (SDS)
have been briefed on the WHS Management plan
have been briefed on the hazards of adjoining worksites/processes.

Table with 4 columns: Name, Signature, Time of briefing: hh:mm, Amendment briefing: hh:mm and initial. Multiple empty rows for data entry.

Safe Work Instruction

Lookout Working Worksite Protection for Wollongong Yard routine network maintenance activities



Worksite Protection Plan – Lookout Working

Signaller Details

<input type="text" value="name"/>	Wollongong Panel	02 4223 5538
-----------------------------------	-------------------------	---------------------

Protection Officer Details

<input type="text" value="name"/>	<input type="text" value="signature"/>	<input type="text" value="contact No."/>
<input type="text" value="RSW or RIW No."/>	<input type="text" value="designation"/>	Planned duration <input type="text"/>

Workplace Supervisor details:

Type of work: **Routine network maintenance activities**

Worksite Location
On the <input type="text" value="Down Illawarra line"/> <input type="text" value="Up Illawarra line"/> <input type="text" value="No.1 Up Siding"/>
On the <input type="text" value="No. 2 Up Siding"/> <input type="text" value="No. 3 Up Siding"/> <input type="text" value="No. 1 Down Siding"/>
On the <input type="text" value="No. 2 Down Siding"/> <input type="text" value="Down Bay"/> <input type="text" value="Goods Siding"/>
On the <input type="text" value="Perway Siding"/>
between <input type="text" value="WG 475 D"/> and <input type="text" value="WG 406 D"/>

Has the Lookout Working Prohibited Locations Register been consulted? Yes

Warning method

Minimum Warning Time Calculations

Maximum track speed

Number of Lookouts used Position of Lookouts to **Note - Lookouts are relocated to positions within these KMs as workers move along the worksite.**

Number of additional Lookouts* used Position of Lookouts to

7 sec	3 sec	10 sec	= Minimum Warning Time (MWT)	20 sec	65 km/h	362 metres	* Add an additional 5 seconds of See Time if an additional Lookout is used Note – Additional MWT calculations can be recorded in the Protection Officer’s Diary.
2 sec	3 sec	10 sec		15 sec	90 km/h	375 metres	
2 sec	3 sec	10 sec		15 sec	65 km/h	271 metres	
<i>See Time (S)</i>	<i>Move Time (M)</i>	<i>Safe Time</i>	<i>(S+M+10 sec = MWT)</i>	<i>Track speed</i>	<i>Minimum Sighting Distance as calculated</i>		

Where are the safe places identified for the Lookouts and the workers?

Lookouts:

Workers:

Ensure the workers have been briefed about these work details Yes

Diagrams, notes, and detailed instructions are over the next pages. These are to be read and followed as part of this worksite protection plan for Lookout Working.

Lookout Working Worksite Protection for Wollongong Yard routine network maintenance activities

INSTRUCTIONS:

1. Workers enter the rail corridor via **Access gate I00 82.554 U Denison St Wollongong**
2. Protection Officer briefs workers about the worksite protection arrangements.
3. Protection Officer contacts **Wollongong Panel** and tells the Signaller about the use of Lookout Working.
4. Establish Lookouts at designated locations.
5. Workers start work up to designated locations.
6. Workers move to safe place.
7. Re-establish Lookouts at next designated location.
8. Repeat steps 5-8 until work is complete.
9. Workers move to a safe place.
10. Recall lookouts.
11. Workers egress the worksite via **Access gate I00 84.003 U Gladstone Ave Coniston**
12. Protection Officer contacts **Wollongong Panel** to end Lookout Working.

ADDITIONAL DETAILS

Obstruction to Minimum Sighting Distance

Stabled rail traffic on any tracks and conditions on the day may obstruct minimum sighting distance. When this hazard is identified, workers must stop work and move to a safe place until the Protection Officer makes an assessment and relocates lookouts to achieve the required minimum sighting distance.

Work can only be done on portions of track highlighted in the diagram

No work can be done between Crown Street bridge and Platform 1 and Platform 2 at Wollongong Station under this Worksite Protection Plan.

No work can be done on the Down Bay within the limits of the platform.

LOOKOUTS

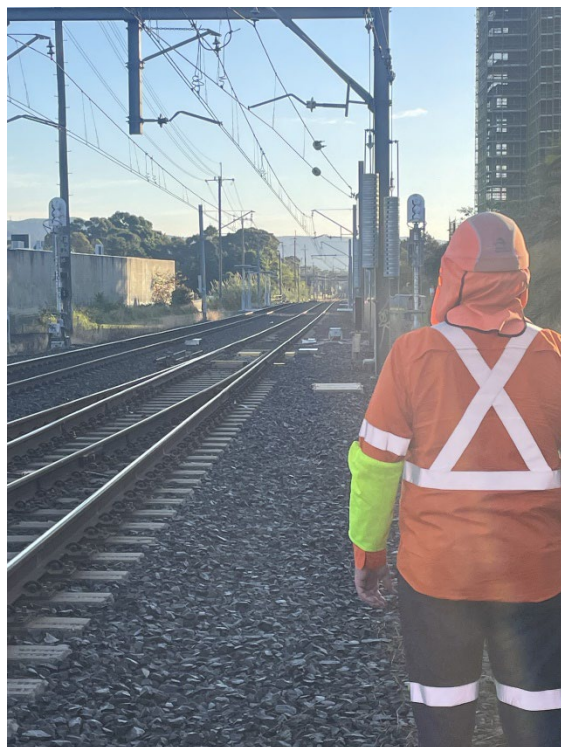


Image 1: Lookouts view – North Wollongong facing **Towradgi**

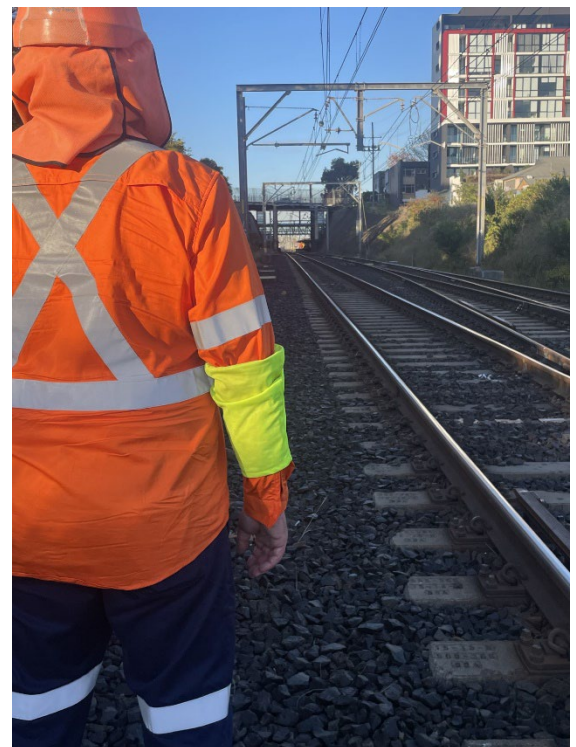


Image 2: Lookouts view – North Wollongong facing **Unanderra**

**Lookout Working Worksite Protection for Wollongong Yard
routine network maintenance activities**



Image 3: Lookouts View – Platform 2 Wollongong Station facing Towradgi



Image 4: Lookout View – Down yard facing Unanderra



Image 5: Lookouts View – Wollongong Down Yard facing Towradgi

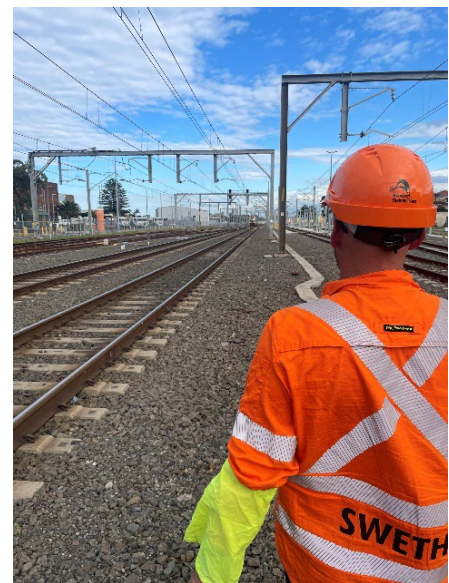


Image 6: Lookouts View – Wollongong Up Yard facing Unanderra

**Lookout Working Worksite Protection for Wollongong Yard
routine network maintenance activities**



Image 7: Lookouts view - Wollongong Up Yard facing Towradgi

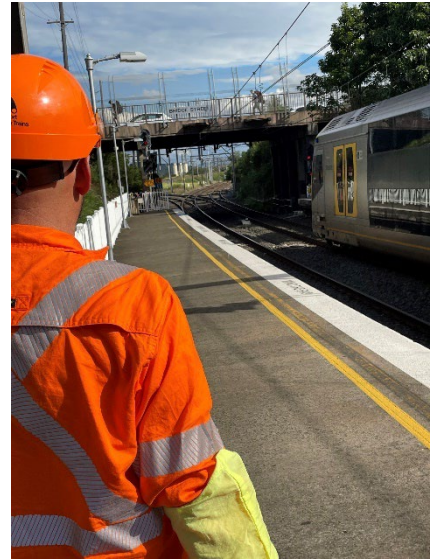



Image 8: Additional Lookouts View – Coniston Platform 2









**Image 9: Lookouts View- Primary & Additional Coniston
Platform 2**

Diagram

↔ Tracks are Bidirectional / Two-way running
Workers and Lookouts must be vigilant for rail traffic from both directions

 Lookouts are established in safe places at designated locations along the worksite as determined by the Protection Officer

LEGEND

-  Worksite
-  Safe place
-  Access / Egress
-  Emergency Assembly Point
-  First aid kit location
-  Lookout

