

DRIVERS ROUTE KNOWLEDGE DIAGRAMS

BANKSTOWN LINE

SYDENHAM
MARRICKVILLE
DULWICH HILL
HURLSTONE PARK
CANTERBURY
CAMPSIE
BELMORE
LAKEMBA
WILEY PARK
PUNCHBOWL
BANKSTOWN
YAGOONA
BIRRONG

Effective Date: May 2019

Version: 4.17

Explanatory Notes:

Navigate to your area of interest via the station index or by using links created in Adobe bookmarks.

This document is approved for **route knowledge only**.

Do not use these diagrams for any safety related purpose without validating the information against a controlled source or in the field.

Information in these diagrams is uncontrolled.

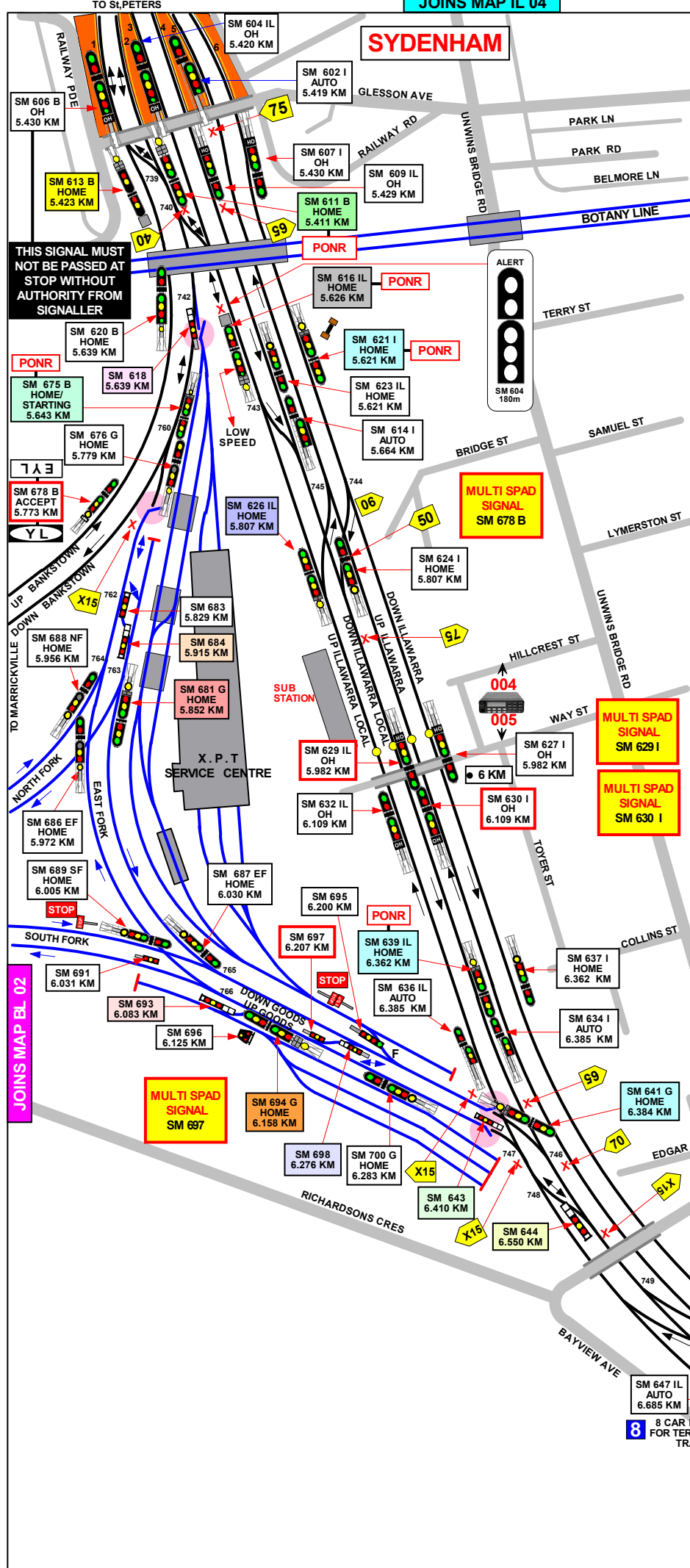
Please report any updates to
gis.support@transport.nsw.gov.au



Copyright: Sydney Trains

Ownership: Geospatial Services,
Asset Information Systems & Services

Location: TRIM Record No.D2015/586



SECTION : **SYDENHAM TO REGENTS PARK**
 MAP SET : SYDENHAM TO MARRICKVILLE
 PAGE: 1 OF 2
 UPDATED TO : 31 March 2019

GRADIENT

INFORMATION

SUBURBAN LINES
 CONTROLLED FROM : SYDENHAM

RADIO AREA CODE : 004 (SYDENHAM)
 005 (SYDENHAM)

FREIGHT LINE CONTROLLED FROM
 JUNEE NCCS "SYDNEY 1" BOARD
 PHONE No. 02 6924 9806
 EMERGENCY PHONE No. 02 6924 9866

RADIO AREA CODE :
 NATIONAL TRAIN COMMUNICATION SYSTEM (NTCS)

SIGNAL	DESTINATION	INDICATION
SM 684	GOODS LINE	G
	NORTH SHUNTING NECK	N

SIGNAL	DESTINATION	INDICATION
SM 644	UP GOODS	G
	UP ILLAWARRA LOCAL	IL

SIGNAL	DESTINATION	INDICATION
SM 643	UP ILLAWARRA MAIN	I
	UP ILLAWARRA LOCAL	IL

SIGNAL	DESTINATION	INDICATION
SM 616 IL	UP BANKSTOWN (M)	1
	UP BANKSTOWN (S)	1
	DOWN BANKSTOWN (M)	2
	DOWN BANKSTOWN (S)	2
	UP ILLAWARRA LOCAL (M)	-
	UP ILLAWARRA LOCAL (S)	IL

SIGNAL	DESTINATION	INDICATION
SM 698	UP GOODS	UG
	DOWN GOODS	DG

SIGNAL	DESTINATION	INDICATION
SM 618	UP BANKSTOWN	1
	DOWN BANKSTOWN	2

SIGNAL	DESTINATION	INDICATION
SM 693	UP GOODS	UG
	SIDING	S

1 IN 440

1 IN 220

1 IN 367

LEVEL

1 IN 367

1 IN 286

1 IN 500

JOINS MAP BL 02

**SECTION : SYDENHAM TO MARRICKVILLE
SYDENHAM TO TEMPE**

MAP SET : SYDENHAM TO REGENTS PARK
PAGE : 2 OF 2
UPDATED TO :21 JULY 2015

SUBURBAN LINES
CONTROLLED FROM : SYDENHAM

RADIO AREA CODE : 004 (SYDENHAM)
005 (SYDENHAM)

FREIGHT LINE CONTROLLED FROM
JUNEE NCCS " SYDNEY 1" BOARD
PHONE No. 02 6924 9806
EMERGENCY PHONE No. 02 6924 9866

RADIO AREA CODE :
NATIONAL TRAIN COMMUNICATION SYSTEM (NTCS)

PROPELLING MOVEMENTS	
FROM	TO
XPT DEPOT	No.1 PLATFORM AT SYDENHAM
XPT DEPOT	No.2 PLATFORM AT SYDENHAM
No.1 PLATFORM AT SYDENHAM	XPT DEPOT
No.2 PLATFORM AT SYDENHAM	XPT DEPOT
No.1 PLATFORM AT SYDENHAM	WEST JUNCTION CLEAR OF No. 775 CROSSOVER
No.1 PLATFORM AT SYDENHAM	SOUTH JUNCTION CLEAR OF No. 770 CROSSOVER
CLEAR OF No. 775 CROSSOVER	CLEAR OF No. 770 CROSSOVER
CLEAR OF No. 770 CROSSOVER	CLEAR OF No. 775 CROSSOVER

THESE PROPELLING MOVEMENTS ARE FOR NON-ELECTRIC ROLLING STOCK ONLY AND MUST BE CARRIED OUT AS SHOWN IN THE INSTRUCTIONS IN NTR 424 / OSP 15 IN THE NETWORK RULES AND OPERATORS SPECIFIC PROCEDURES MANUALS

PONR POINT OF NO RETURN		
SIGNAL No.	LOCATION	DESTINATION
SM 621 I	APPROX. 250 METRES COUNTRY SIDE OF No. 6 PLATFORM SYDENHAM (DOWN ILLAWARRA)	EAST HILLS LINE
SM 611 B	COUNTRY END OF No. 2 PLATFORM SYDENHAM	ILLAWARRA LINES
SM 639 IL	APPROX. 1 KILOMETRE COUNTRY SIDE OF No. 4 PLATFORM SYDENHAM (DOWN ILLAWARRA LOCAL)	WOLLI CREEK STATION
SM 616 IL	UP ILLAWARRA LOCAL LINE AT 5.626 KM	TERMINATE AT SYDENHAM
SM 675 B	DOWN BANKSTOWN LINE AT 5.643 KM	GOODS LINE
SM 648 IL	SYDNEY END OF No. 1 PLATFORM TEMPE	GOODS LINE
SM 650 I	SYDNEY END OF No. 3 PLATFORM TEMPE	GOODS LINE

SIGNAL	DESTINATION	INDICATION
SM 613 B	DOWN ILLAWARRA LOCAL (M)	IL
	DOWN ILLAWARRA LOCAL (S)	IL
	DOWN XPT (S)	X
	DOWN BANKSTOWN (M)	B
	DOWN BANKSTOWN (S)	B

SIGNAL	DESTINATION	INDICATION
SM 675 B	DOWN GOODS (M)	-
	DOWN GOODS (S)	G
	DOWN BANKSTOWN (M)	-
	DOWN BANKSTOWN (S)	B

SIGNAL	DESTINATION	INDICATION
SM 681 G	DOWN EAST FORK (M)	-
	DOWN EAST FORK (S)	EF
	DOWN NORTH FORK (M)	-
	DOWN NORTH FORK (S)	NF

SIGNAL	DESTINATION	INDICATION
SM 694 G	UP SHUNTING NECK (S)	SN
	UP SOUTH FORK (M)	-
	UP SOUTH FORK (S)	SF
	UP EAST FORK (M)	-
	UP EAST FORK (S)	EF

SIGNAL	DESTINATION	INDICATION
SM 648 IL	UP GOODS (M)	-
	UP GOODS (S)	G
	UP ILLAWARRA LOCAL (M)	-
	UP ILLAWARRA LOCAL (S)	IL

SIGNAL	DESTINATION	INDICATION
SM 611 B	DOWN ILLAWARRA LOCAL (M)	-
	DOWN ILLAWARRA LOCAL (S)	IL
	DOWN XPT (S)	X
	DOWN BANKSTOWN (M)	-
	DOWN BANKSTOWN (S)	B

SIGNAL	DESTINATION	INDICATION
SM 650 I	UP GOODS (M)	G
	UP GOODS (S)	G
	UP ILLAWARRA LOCAL (M)	IL
	UP ILLAWARRA LOCAL (S)	IL
	UP ILLAWARRA (M)	-
	UP ILLAWARRA (S)	I

SYDENHAM TERMINATING TRAINS (UNDER NORMAL CONDITIONS)		
FROM	TERMINATE AT	THEN GO TO
UP BANKSTOWN	No.1 PLATFORM	RETURN TO EITHER THE DOWN BANKSTOWN LINE, THE DOWN ILLAWARRA LOCAL LINE, THE XPT SIDINGS OR THE GOODS LINES.
	No.1 PLATFORM	RETURN TO EITHER THE DOWN BANKSTOWN LINE, THE DOWN ILLAWARRA LOCAL LINE, THE XPT SIDINGS OR THE GOODS LINES.
UP ILLAWARRA LINE	No.2 PLATFORM	RETURN TO EITHER THE DOWN BANKSTOWN LINE, THE DOWN ILLAWARRA LOCAL LINE, THE XPT SIDINGS OR THE GOODS LINES.
DOWN TRAINS	MUST NOT TERMINATE AT THIS LOCATION AS THERE ARE NO SIGNALS PROVIDED FOR THE MOVEMENT.	
DOWN TRAINS AT TEMPE	DOWN ILLAWARRA TRAINS MAY TERMINATE BEHIND SIGNAL SM 644 AND RETURN TO THE UP ILLAWARRA LOCAL LINE.	
UP ILLAWARRA LOCAL LINE	UP GOODS LINE AT SIGNAL No. SM 700	RETURN TO THE DOWN ILLAWARRA LOCAL LINE OR THE DOWN ILLAWARRA LINE VIA No. 748 POINTS.
	UP SOUTH FORK	RETURN TO THE DOWN GOODS LINE VIA No. 770 POINTS.

SELF-PROPELLED DIESEL TRAINS MAY TERMINATE ON		
FROM	TERMINATE AT	THEN GO TO
	DOWN EAST FORK	RETURN TO THE UP NORTH FORK VIA No. 762 POINTS.
	DOWN GOODS LINE	RETURN TO THE UP SOUTH FORK VIA No. 770 POINTS.
	DOWN ILLAWARRA LOCAL LINE AT SIGNAL No. SM 644	RETURN TO EITHER THE UP NORTH FORK VIA Nos. 775 AND 773 POINTS OR THE DOWN SOUTH FORK VIA No. 775 POINTS

EXCHANGE CAR WORKING		
ALL EXCHANGE CAR WORKING FORM THE UP ILLAWARRA LOCAL LINE MUST NORMALLY BE ADMITTED INTO No.1 PLATFORM AS No. 2 PLATFORM ONLY HOLDS 9 SUBURBAN ELECTRIC CARS.		
HOW EVER, PROVIDED THAT THE SIGNALLER CHECKS THAT THERE ARE NO MORE THAN 9 SUBURBAN ELECTRIC CARS IN THE TRAIN CONSIST, THE TRAIN MAY BE BROUGHT INTO No. 2 PLATFORM.		

SIGNAL	DESTINATION	INDICATION
SM 616 IL	UP BANKSTOWN (M)	1
	UP BANKSTOWN (S)	1
	DOWN BANKSTOWN (M)	2
	DOWN BANKSTOWN (S)	2
	UP ILLAWARRA LOCAL (M)	-
	UP ILLAWARRA LOCAL (S)	IL

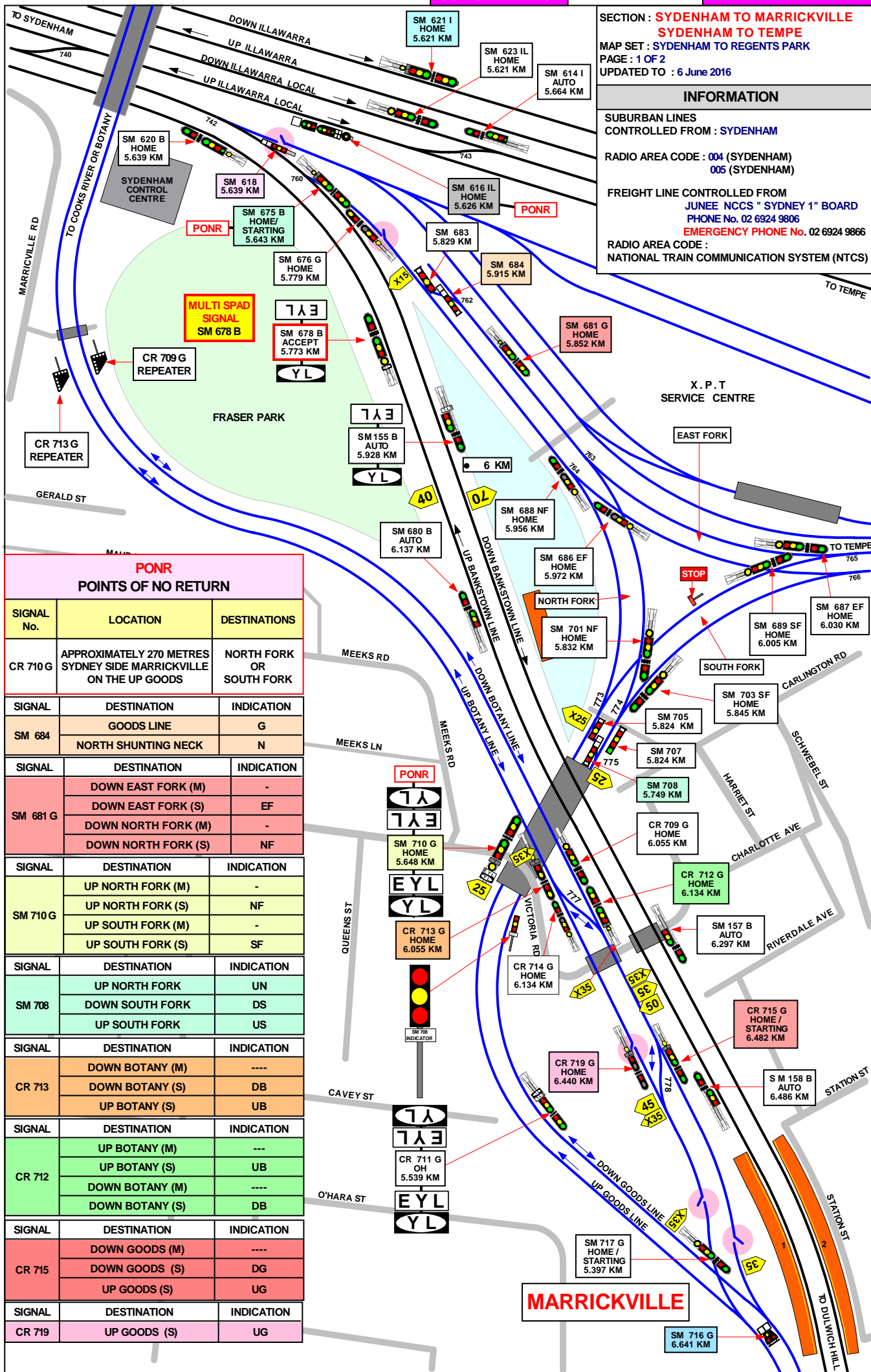
SIGNAL	DESTINATION	INDICATION
SM 626 IL	UP ILLAWARRA LOCAL (M)	-
	UP ILLAWARRA LOCAL (S)	IL
	UP ILLAWARRA (M)	-
	UP ILLAWARRA (S)	I

SIGNAL	DESTINATION	INDICATION
SM 621 I & SM 639 IL & SM 641 G	DOWN ILLAWARRA (M)	-
	DOWN ILLAWARRA (S)	I
	DOWN ILLAWARRA LOCAL (M)	-
	DOWN ILLAWARRA LOCAL (S)	IL

SECTION : SYDENHAM TO MARRICKVILLE
 SYDENHAM TO TEMPE
 MAP SET : SYDENHAM TO REGENTS PARK
 PAGE : 1 OF 2
 UPDATED TO : 6 June 2016

INFORMATION

SUBURBAN LINES
 CONTROLLED FROM : SYDENHAM
 RADIO AREA CODE : 004 (SYDENHAM)
 005 (SYDENHAM)
 FREIGHT LINE CONTROLLED FROM
 JUNEE NCCS " SYDNEY 1" BOARD
 PHONE No. 02 6924 9806
 EMERGENCY PHONE No. 02 6924 9866
 RADIO AREA CODE :
 NATIONAL TRAIN COMMUNICATION SYSTEM (NTCS)



PONR
 POINTS OF NO RETURN

SIGNAL No.	LOCATION	DESTINATIONS
CR 710 G	APPROXIMATELY 270 METRES SYDNEY SIDE MARRICKVILLE ON THE UP GOODS	NORTH FORK OR SOUTH FORK
SIGNAL	DESTINATION	INDICATION
SM 684	GOODS LINE	G
	NORTH SHUNTING NECK	N
SIGNAL	DESTINATION	INDICATION
SM 681 G	DOWN EAST FORK (M)	-
	DOWN EAST FORK (S)	EF
	DOWN NORTH FORK (M)	-
	DOWN NORTH FORK (S)	NF
SIGNAL	DESTINATION	INDICATION
SM 710 G	UP NORTH FORK (M)	-
	UP NORTH FORK (S)	NF
	UP SOUTH FORK (M)	-
	UP SOUTH FORK (S)	SF
SIGNAL	DESTINATION	INDICATION
SM 708	UP NORTH FORK	UN
	DOWN SOUTH FORK	DS
	UP SOUTH FORK	US
SIGNAL	DESTINATION	INDICATION
CR 713	DOWN BOTANY (M)	----
	DOWN BOTANY (S)	DB
	UP BOTANY (S)	UB
SIGNAL	DESTINATION	INDICATION
CR 712	UP BOTANY (M)	----
	UP BOTANY (S)	UB
	DOWN BOTANY (M)	----
CR 715	DOWN GOODS (M)	----
	DOWN GOODS (S)	DG
	UP GOODS (S)	UG
SIGNAL	DESTINATION	INDICATION
CR 719	UP GOODS (S)	UG

1 IN 100

1 IN 90

1 IN 100

1 IN 170

SIGNAL	DESTINATION	INDICATION
SM 713 G	DOWN BOTANY (M)	-
	DOWN BOTANY (S)	DB
	UP BOTANY (S)	UB

SIGNAL	DESTINATION	INDICATION
SM 716 G	DOWN GOODS (S)	DG
	DOWN BOTANY (S)	DB

SIGNAL	DESTINATION	INDICATION
SM 719 G	UP GOODS (S)	UG

SIGNAL	DESTINATION	INDICATION
SM 712 G	UP BOTANY (M)	-
	UP BOTANY (S)	UB
	DOWN BOTANY (M)	-
	DOWN BOTANY (S)	DB

SIGNAL	DESTINATION	INDICATION
SM 715 G	DOWN GOODS (M)	-
	DOWN GOODS (S)	DG
	UP GOODS (S)	UG

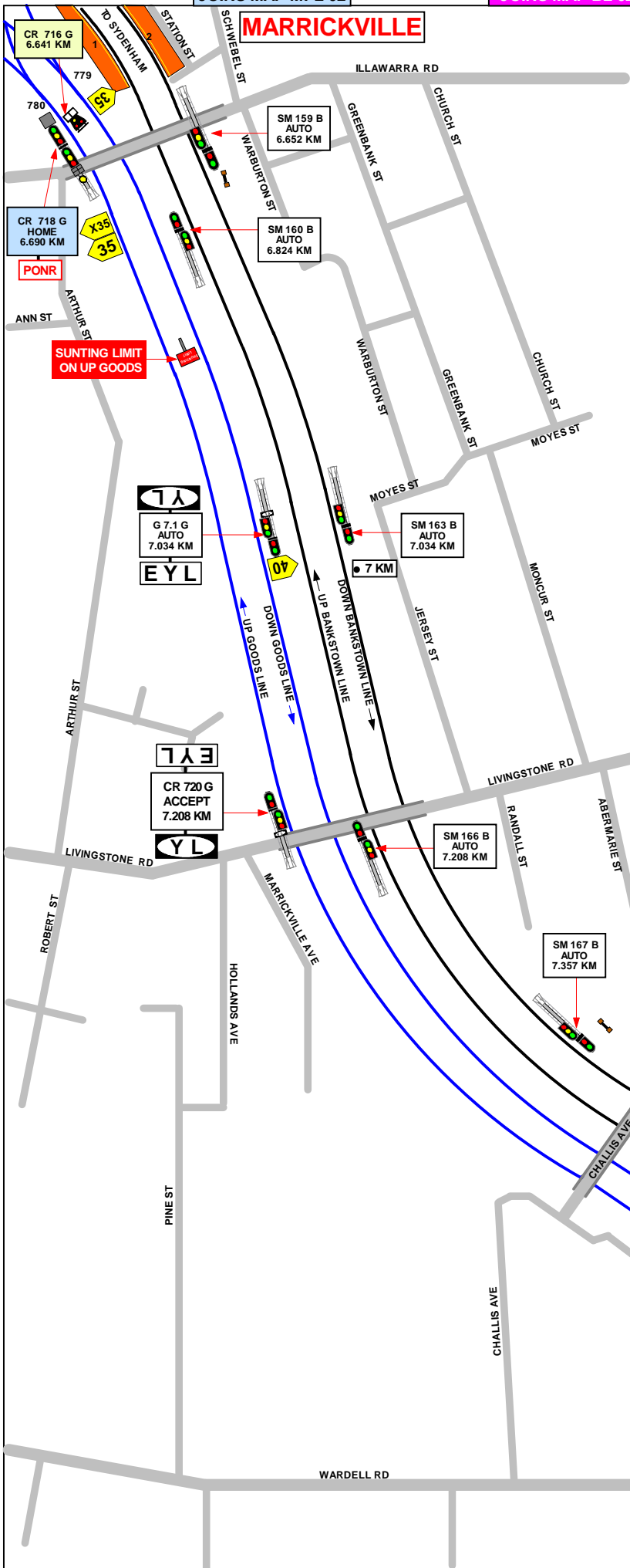
SECTION : **SYDENHAM TO MARRICKVILLE**
SYDENHAM TO TEMPE
MAP SET : SYDENHAM TO REGENTS PARK
PAGE : 2 OF 2
UPDATED TO : 21 JULY 2015

SUBURBAN LINES
CONTROLLED FROM : SYDENHAM

RADIO AREA CODE : 004 (SYDENHAM)
057 (SYDENHAM)

FREIGHT LINE CONTROLLED FROM
JUNEE NCCS " SYDNEY 1" BOARD
PHONE No. 02 6924 9806
EMERGENCY PHONE No. 02 6924 9866

RADIO AREA CODE :
NATIONAL TRAIN COMMUNICATION SYSTEM (NTCS)



SECTION : **MARRICKVILLE TO DULWICH HILL**
 MAP SET : SYDENHAM TO REGENTS PARK
 UPDATED TO :21 JULY 2015

GRADIENT

INFORMATION

SUBURBAN LINES
 CONTROLLED FROM : SYDENHAM

RADIO AREA CODE : 004 (SYDENHAM)
 057 (SYDENHAM)

FREIGHT LINE CONTROLLED FROM
 JUNEE NCCS " SYDNEY 1" BOARD
 PHONE No. 02 6924 9806
 EMERGENCY PHONE No. 02 6924 9866

RADIO AREA CODE :
 NATIONAL TRAIN COMMUNICATION SYSTEM (NTCS)

SPECIAL POINTS OF INTEREST

MARRICKVILLE

PONR
 POINTS OF NO RETURN

SIGNAL No.	LOCATION	DESTINATIONS
SM 718 G	APPROXIMATELY 50 METRES COUNTRY SIDE MARRICKVILLE ON THE UP GOODS	UP GOODS LINE OR BOTANY LINE (MARRICKVILLE LOOP)

SIGNAL	DESTINATION	INDICATION
CR 718 G	UP GOODS (M)	-
	UP GOODS (S)	UG
	UP BOTANY (M)	UB
	UP BOTANY (S)	UB
	DOWN BOTANY (M)	DB
	DOWN BOTANY (S)	DB

SIGNAL	DESTINATION	INDICATION
CR 716 G	DOWN GOODS	DG
	DOWN BOTANY	DB

1 IN 170
 1 IN 100
 1 IN 110
 1 IN 100
 1 IN 110
 1 IN 1000
 LEVEL

SECTION : HURLSTONE PARK TO DULWICH HILL
MAP SET : SYDENHAM TO REGENTS PARK
UPDATED TO : 21 JULY 2015

GRADIENT

INFORMATION

SUBURBAN LINES
CONTROLLED FROM : SYDENHAM

RADIO AREA CODE : 057 (SYDENHAM)

FREIGHT LINE CONTROLLED FROM
JUNEE NCCS " SYDNEY 1" BOARD
PHONE No. 02 6924 9806
EMERGENCY PHONE No. 02 6924 9866

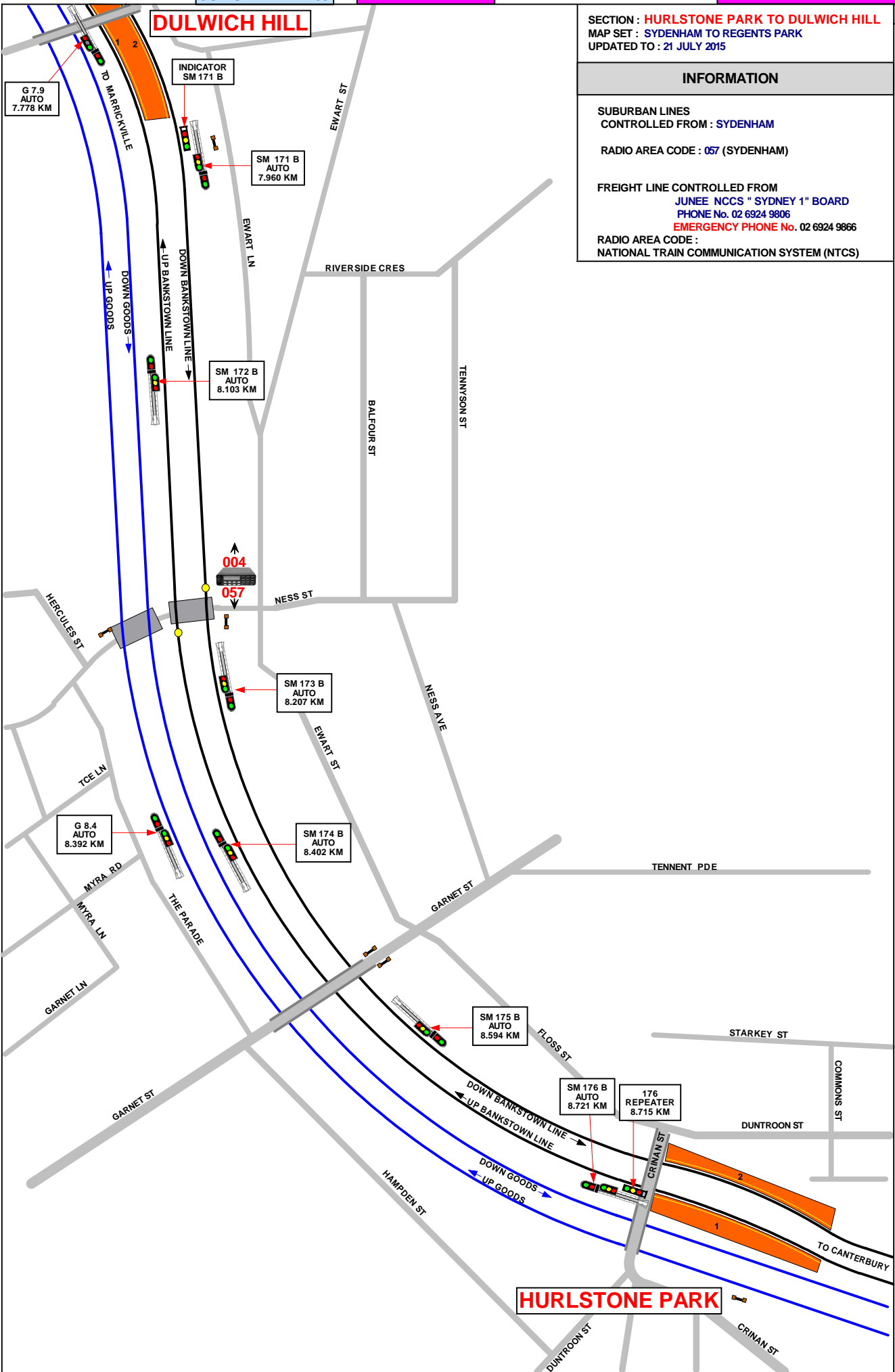
RADIO AREA CODE :
NATIONAL TRAIN COMMUNICATION SYSTEM (NTCS)

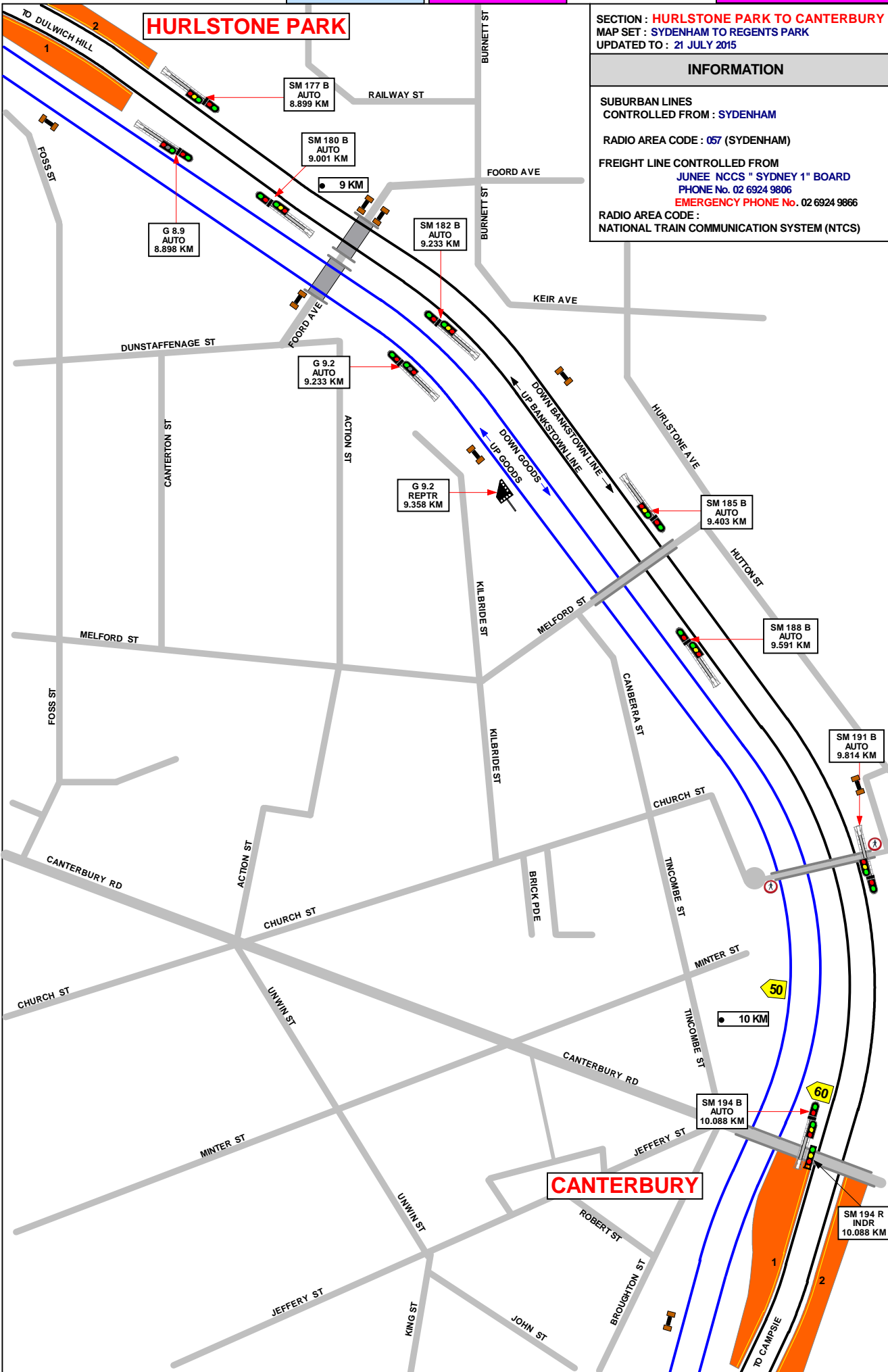
LEVEL

1 IN 425

1 IN 440

1 IN 170





SECTION : HURLSTONE PARK TO CANTERBURY
 MAP SET : SYDENHAM TO REGENTS PARK
 UPDATED TO : 21 JULY 2015

INFORMATION

SUBURBAN LINES
 CONTROLLED FROM : SYDENHAM

RADIO AREA CODE : 057 (SYDENHAM)

FREIGHT LINE CONTROLLED FROM
 JUNE E NCCS " SYDNEY 1" BOARD
 PHONE No. 02 6924 9806
 EMERGENCY PHONE No. 02 6924 9866

RADIO AREA CODE :
 NATIONAL TRAIN COMMUNICATION SYSTEM (NTCS)

GRADIENT

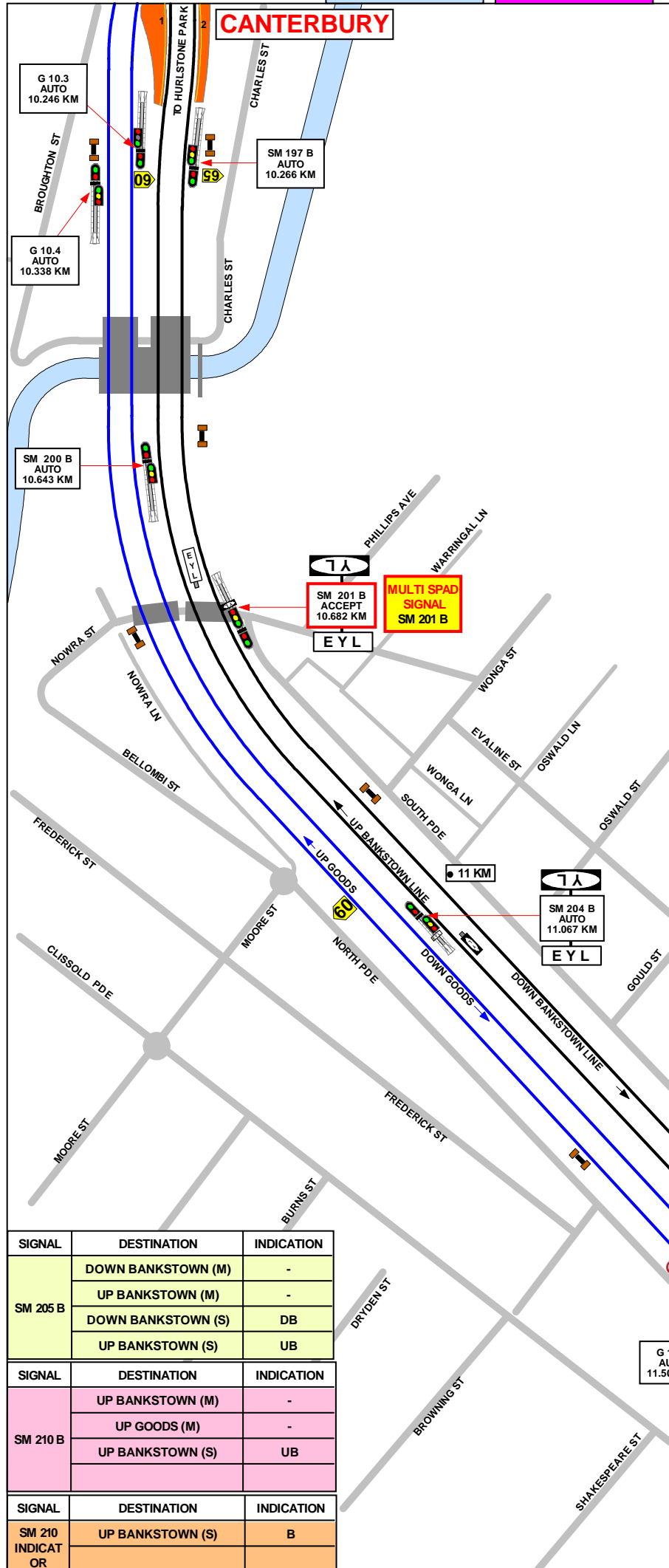
1 IN 170

1 IN 160

1 IN 132

1 IN 100

LEVEL



SECTION : **CANTERBURY TO CAMPSIE**
 MAP SET : SYDENHAM TO REGENTS PARK
 AMENDED TO : 10 NOVEMBER 2015

GRADIENT	LEVEL
1 IN 264	
1 IN 100	1 IN 132
1 IN 165	
1 IN 400	1 IN 165

INFORMATION

SUBURBAN LINES
 CONTROLLED FROM : SYDENHAM

RADIO AREA CODE : 057 (SYDENHAM)

FREIGHT LINE CONTROLLED FROM
 JUNEE NCCS " SYDNEY 1" BOARD
 PHONE No. 02 6924 9806
 EMERGENCY PHONE No. 02 6924 9866

RADIO AREA CODE :
 NATIONAL TRAIN COMMUNICATION SYSTEM (NTCS)

CAMPSIE
 TERMINATING TRAINS (UNDER NORMAL CONDITIONS)

FROM	TERMINATE AT	THEN GO TO
DOWN TRAINS	No. 1 PLATFORM	UP BANKSTOWN LINE
UP TRAINS	No. 1 PLATFORM	DOWN BANKSTOWN LINE

PONR
 POINTS OF NO RETURN

SIGNAL No.	LOCATION	DESTINATION
SM 205 B	APPROXIMATELY 360 METRES SYDNEY SIDE CAMPSIE ON THE DOWN BANKSTOWN LINE	CAMPSIE NUMBER No. 1 PLATFORM

SIGNAL	DESTINATION	INDICATION
SM 205 B	DOWN BANKSTOWN (M)	-
	UP BANKSTOWN (M)	-
	DOWN BANKSTOWN (S)	DB
	UP BANKSTOWN (S)	UB
SM 210 B	UP BANKSTOWN (M)	-
	UP GOODS (M)	-
	UP BANKSTOWN (S)	UB
SM 210 INDICATOR	UP BANKSTOWN (S)	B

SECTION : **CAMPSTO TO BELMORE**
 MAP SET : SYDENHAM TO REGENTS PARK
 AMENDED TO : 10 November 2015

GRADIENT

INFORMATION

SUBURBAN LINES
 CONTROLLED FROM : SYDENHAM

RADIO AREA CODE : 057 (SYDENHAM)

FREIGHT LINE CONTROLLED FROM
 JUNE NCCS " SYDNEY 1" BOARD
 PHONE No. 02 6924 9806
 EMERGENCY PHONE No. 02 6924 9866

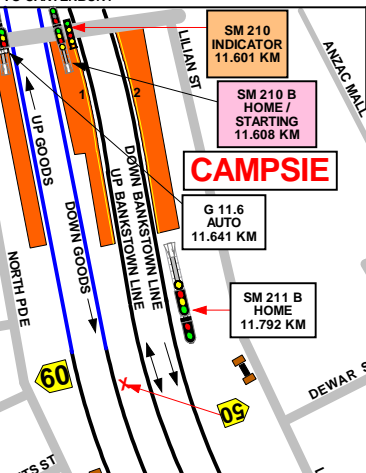
RADIO AREA CODE :
 NATIONAL TRAIN COMMUNICATION SYSTEM (NTCS)

**SPECIAL POINTS OF INTEREST
 CAMPSTO**

**PONR
 POINTS OF NO RETURN**

SIGNAL No.	LOCATION	DESTINATIONS
SM 217 B	APPROXIMATELY 320 METRES COUNTRY SIDE OF CAMPSTO ON THE UP BANKSTOWN LINE	DOWN BANKSTOWN LINE
SM 205 B	APPROXIMATELY 360 METRES SYDNEY SIDE CAMPSTO ON THE DOWN BANKSTOWN LINE	CAMPSTO PLATFORM No. 1

SIGNAL	DESTINATION	INDICATION
SM 210 B	UP BANKSTOWN (M)	---
	UP BANKSTOWN (S)	---
SM 217 B	DOWN BANKSTOWN (M)	---
	DOWN BANKSTOWN (S)	DB



**MULTI SPAD SIGNAL
 SM 217 B**

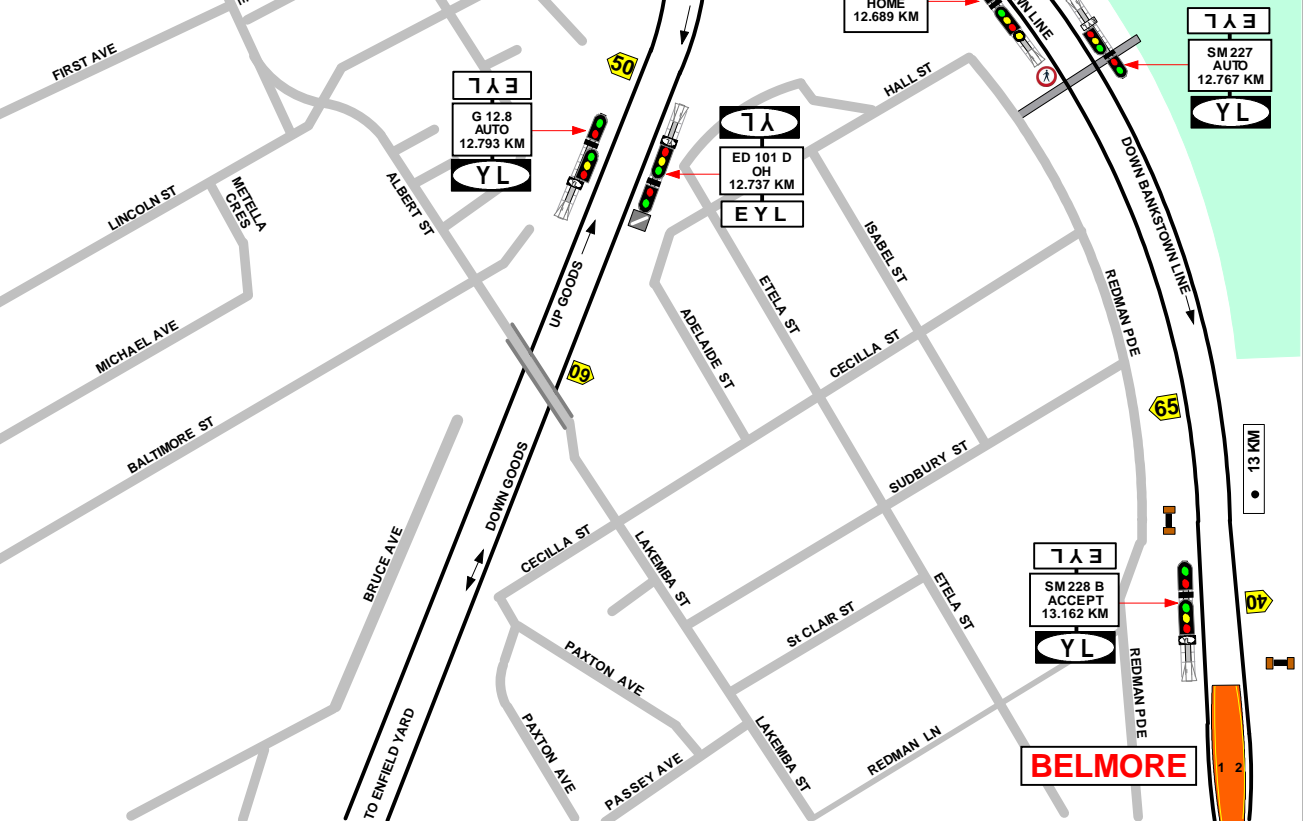
PONR

SM 217 B HOME / STARTING 12.116 KM
 SEE PLATE "F"

THIS SIGNAL MUST NOT BE PASSED AT STOP WITHOUT AUTHORITY FROM SIGNALLER

**CAMPSTO
 TERMINATING TRAINS (UNDER NORMAL CONDITIONS)**

FROM	TERMINATE AT	THEN GO TO
DOWN TRAINS	No.1 PLATFORM	UP BANKSTOWN LINE
UP TRAINS	No. 1 PLATFORM	DOWN BANKSTOWN LINE



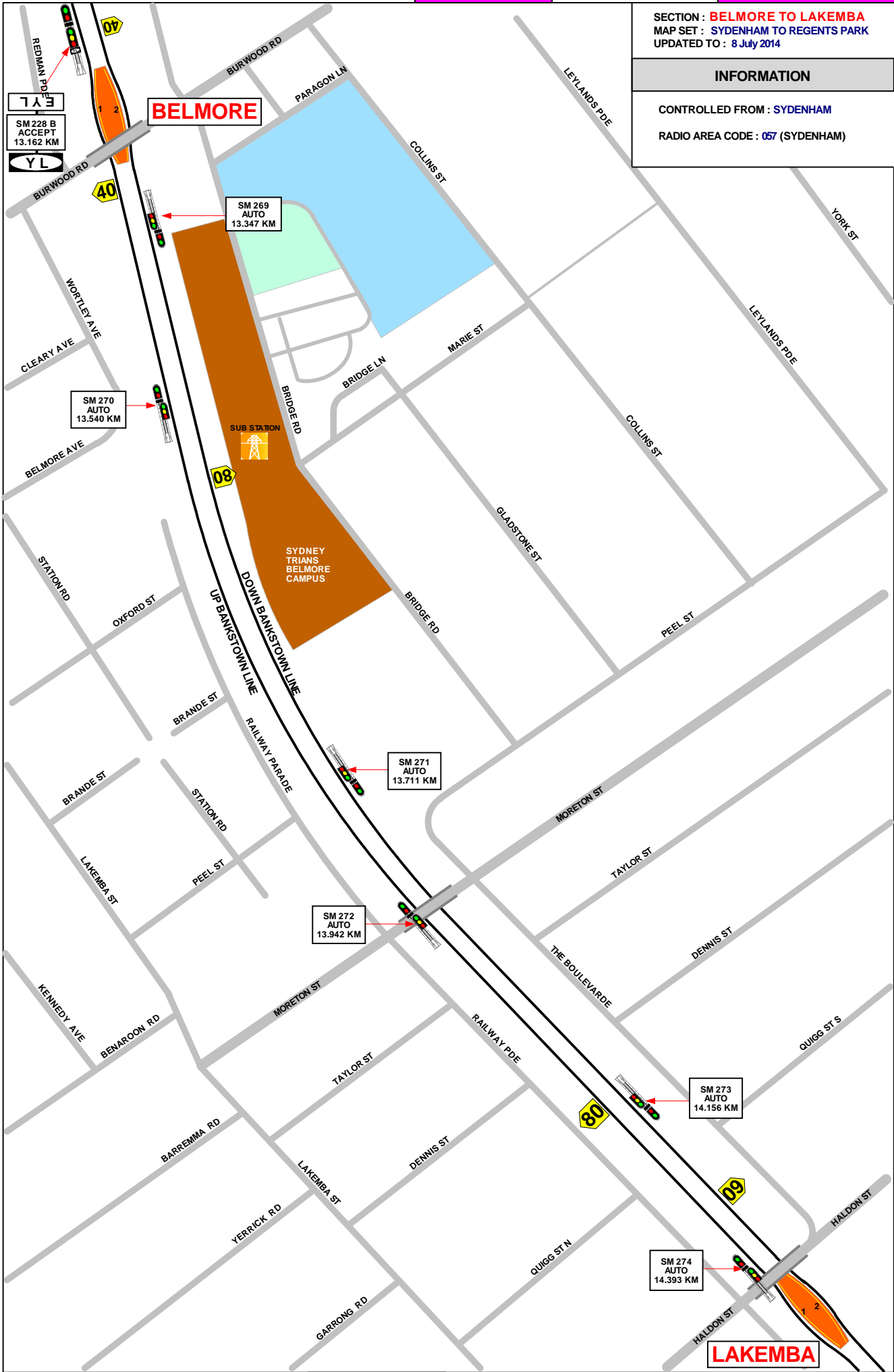
1 IN 400
 1 IN 150
 1 IN 200
 1 IN 100
 1 IN 184
 1 IN 200
 1 IN 384
 1 IN 400

SECTION : **BELMORE TO LAKEMBA**
MAP SET : SYDENHAM TO REGENTS PARK
UPDATED TO : 8 July 2014

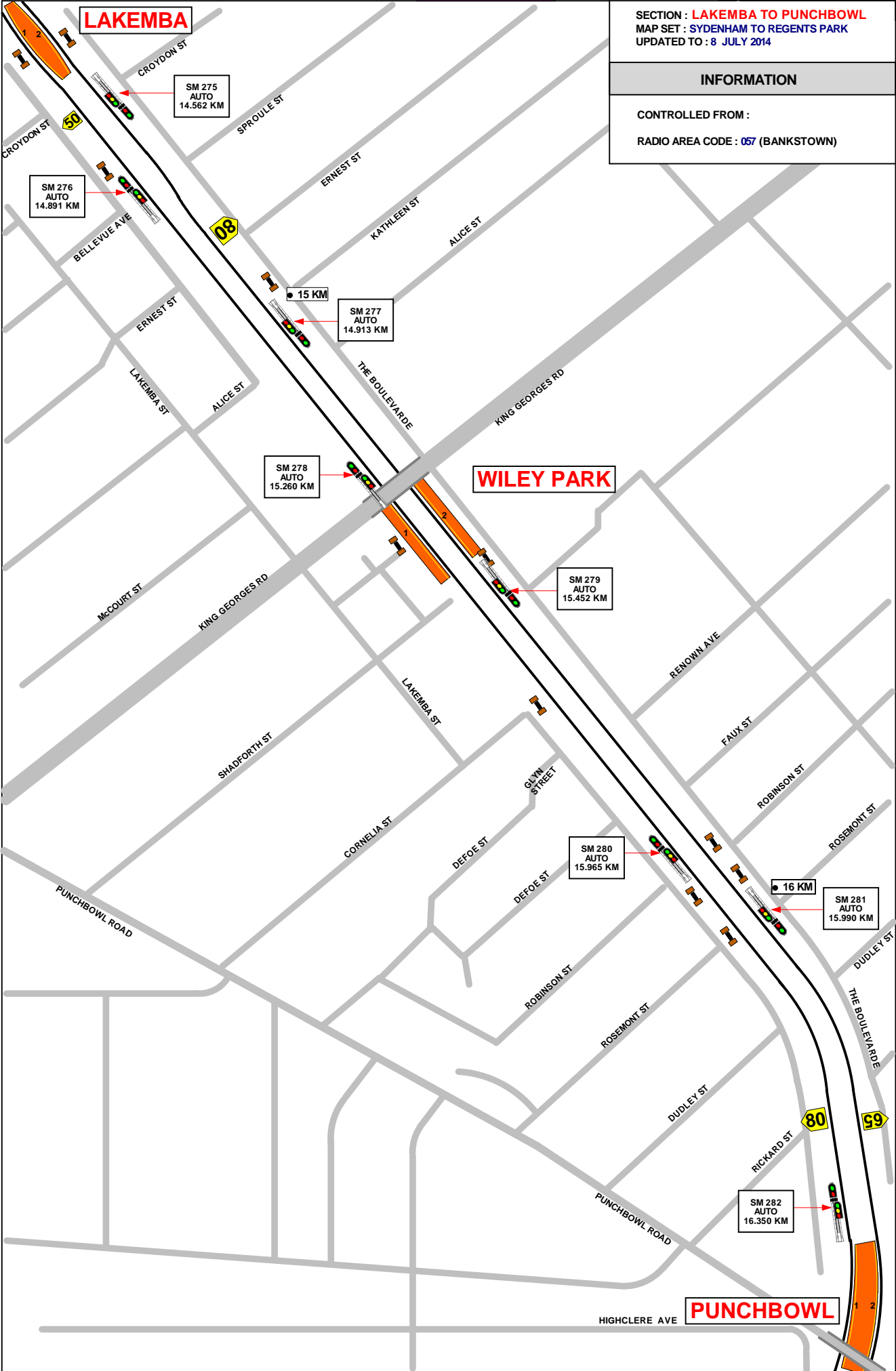
INFORMATION

CONTROLLED FROM : SYDENHAM
RADIO AREA CODE : 057 (SYDENHAM)

GRADIENT	
1 IN 384	
1 IN 400	
1 IN 452	
1 IN 100	
LEVEL	
1 IN 660	



TO CAMPSIE



SECTION : LAKEMBA TO PUNCHBOWL
 MAP SET : SYDENHAM TO REGENTS PARK
 UPDATED TO : 8 JULY 2014

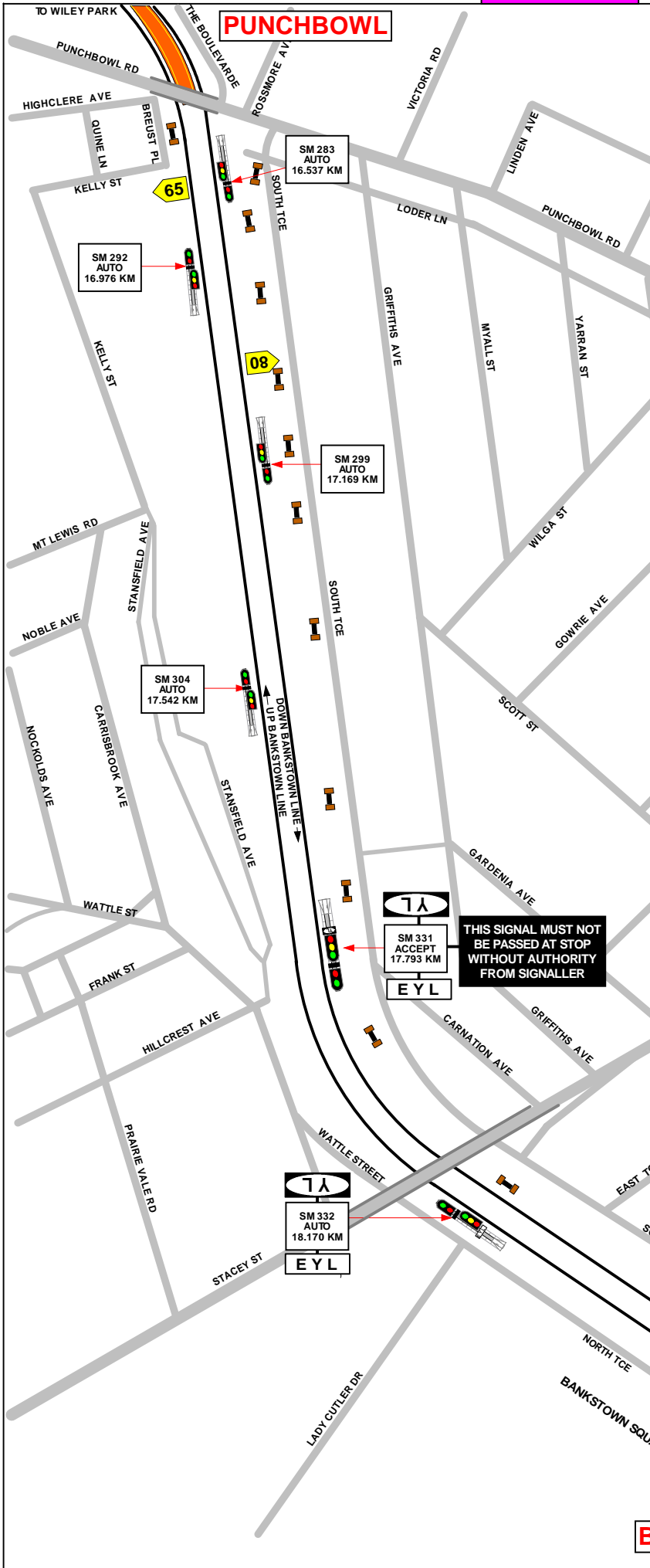
INFORMATION

CONTROLLED FROM :
 RADIO AREA CODE : 057 (BANKSTOWN)

GRADIENT

1 IN 100
LEVEL
1 IN 660
1 IN 110
1 IN 120
1 IN 165
1 IN 100
LEVEL
1 IN 275
1 IN 232
1 IN 164

TO BANKSTOWN



PUNCHBOWL

SECTION : **PUNCHBOWL TO BANKSTOWN**
 MAP SET : SYDENHAM TO REGENTS PARK
 UPDATED TO : 8 JULY 2014

GRADIENT

1 IN 164

INFORMATION

CONTROLLED FROM : SYDENHAM
 RADIO AREA CODE : 057 (SYDENHAM)
SPECIAL POINTS OF INTEREST
BANKSTOWN
PROPELLING MOVEMENTS
 THE FOLLOWING PROPELLING MOVEMENT IS AUTHORISED AT BANKSTOWN.
 FROM THE UP MAIN LINE TO THE DOWN MAIN LINE VIA No. 360 CROSSOVER
 NOTE : ALL PROPELLING MOVEMENTS MUST BE CARRIED OUT AS PER PROCEDURES SET OUT IN "NTR 424 / OSP 15" IN THE NETWORK RULES AND OPERATORS SPECIFIC PROCEDURES MANUALS.

LEVEL

1 IN 100

BANKSTOWN

TERMINATING TRAINS (UNDER NORMAL CONDITIONS)

FROM	TERMINATE AT	THEN GO TO
UP BANKSTOWN MAIN	No. 1 PLATFORM	RETURN TO DOWN BANKSTOWN LINE VIA THE LOOP LINE OR SHUNT FORWARD AND THEN RETURN TO No. 2 PLATFORM
DOWN BANKSTOWN MAIN	No. 2 PLATFORM	RETURN TO THE UP VIA 360 CROSSOVER OR SHUNT FORWARD INTO THE LOOP LINE AND THEN RETURN TO No. 1 PLATFORM

1 IN 440

SIGNAL	DESTINATION	INDICATION
SM 335	DOWN BANKSTOWN	DB
	UP BANKSTOWN	UB

1 IN 100

1 IN 165

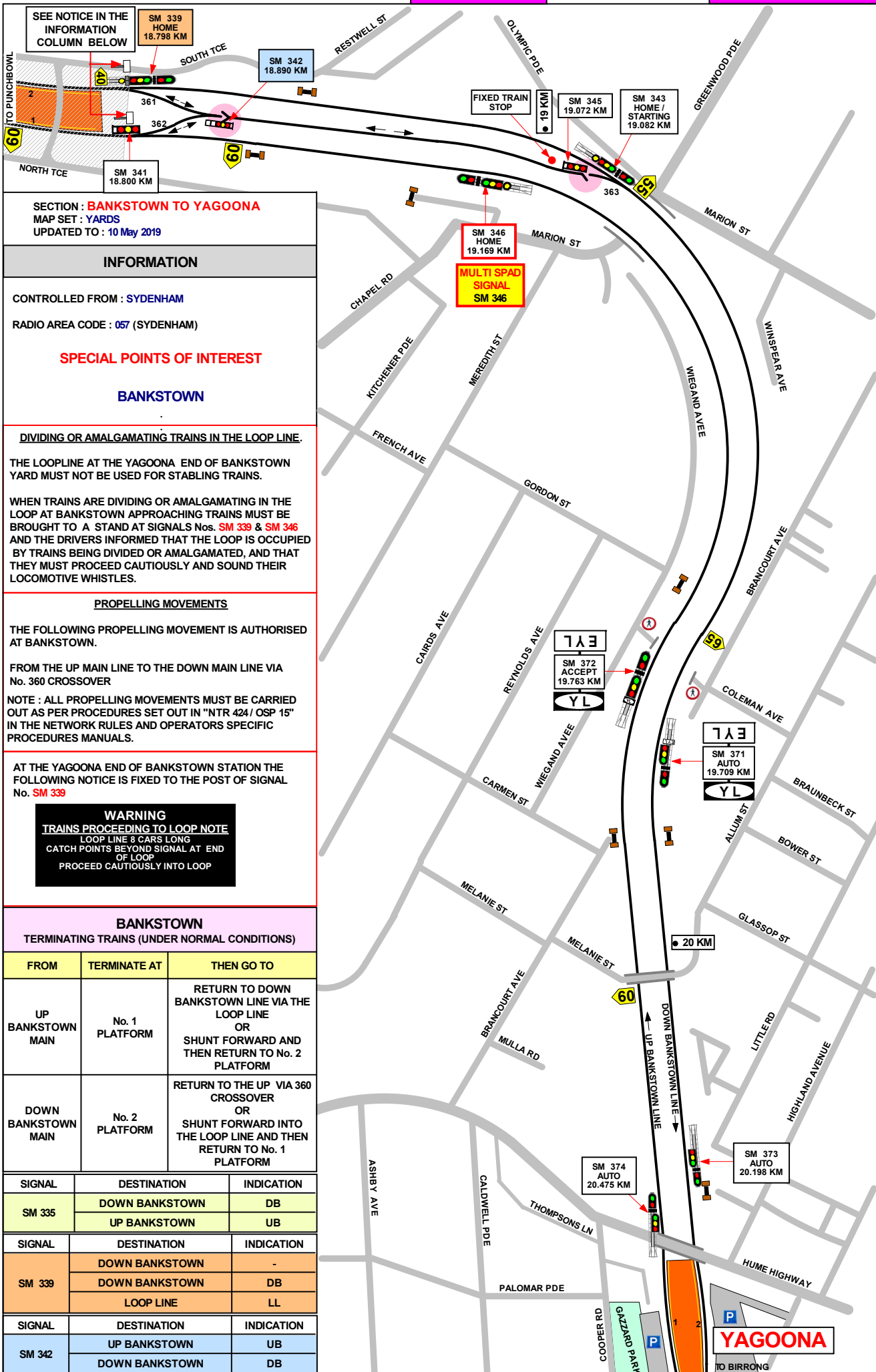
1 IN 100

1 IN 94

1 IN 868

1 IN 662

BANKSTOWN



GRADIENT	
1 IN 868	
1 IN 662	
1 IN 440	
1 IN 81	
1 IN 170	
1 IN 70	
1 IN 82	
1 IN 70	
1 IN 163	
1 IN 225	

SEE NOTICE IN THE INFORMATION COLUMN BELOW

SM 339 HOME 18.798 KM

SM 342 18.890 KM

FIXED TRAIN STOP

SM 345 19.072 KM

SM 343 HOME / STARTING 19.082 KM

SM 341 18.800 KM

SM 346 HOME 19.169 KM

MULTI SPAD SIGNAL SM 346

SM 372 ACCEPT 19.763 KM

SM 371 AUTO 19.709 KM

SM 374 AUTO 20.475 KM

SM 373 AUTO 20.198 KM

SECTION : **BANKSTOWN TO YAGOONA**
 MAP SET : **YARDS**
 UPDATED TO : **10 May 2019**

INFORMATION

CONTROLLED FROM : **SYDENHAM**
 RADIO AREA CODE : **057 (SYDENHAM)**

SPECIAL POINTS OF INTEREST

BANKSTOWN

DIVIDING OR AMALGAMATING TRAINS IN THE LOOP LINE.

THE LOOPLINE AT THE YAGOONA END OF BANKSTOWN YARD MUST NOT BE USED FOR STABLING TRAINS.

WHEN TRAINS ARE DIVIDING OR AMALGAMATING IN THE LOOP AT BANKSTOWN APPROACHING TRAINS MUST BE BROUGHT TO A STAND AT SIGNALS Nos. **SM 339 & SM 346** AND THE DRIVERS INFORMED THAT THE LOOP IS OCCUPIED BY TRAINS BEING DIVIDED OR AMALGAMATED, AND THAT THEY MUST PROCEED CAUTIOUSLY AND SOUND THEIR LOCOMOTIVE WHISTLES.

PROPELLING MOVEMENTS

THE FOLLOWING PROPELLING MOVEMENT IS AUTHORISED AT BANKSTOWN.

FROM THE UP MAIN LINE TO THE DOWN MAIN LINE VIA No. 360 CROSSOVER

NOTE : ALL PROPELLING MOVEMENTS MUST BE CARRIED OUT AS PER PROCEDURES SET OUT IN "NTR 424 / OSP 15" IN THE NETWORK RULES AND OPERATORS SPECIFIC PROCEDURES MANUALS.

AT THE YAGOONA END OF BANKSTOWN STATION THE FOLLOWING NOTICE IS FIXED TO THE POST OF SIGNAL No. **SM 339**

WARNING
 TRAINS PROCEEDING TO LOOP NOTE
 LOOP LINE 8 CARS LONG
 CATCH POINTS BEYOND SIGNAL AT END OF LOOP
 PROCEED CAUTIOUSLY INTO LOOP

BANKSTOWN

TERMINATING TRAINS (UNDER NORMAL CONDITIONS)

FROM	TERMINATE AT	THEN GO TO
UP BANKSTOWN MAIN	No. 1 PLATFORM	RETURN TO DOWN BANKSTOWN LINE VIA THE LOOP LINE OR SHUNT FORWARD AND THEN RETURN TO No. 2 PLATFORM
DOWN BANKSTOWN MAIN	No. 2 PLATFORM	RETURN TO THE UP VIA 360 CROSSOVER OR SHUNT FORWARD INTO THE LOOP LINE AND THEN RETURN TO No. 1 PLATFORM

SIGNAL	DESTINATION	INDICATION
SM 335	DOWN BANKSTOWN	DB
	UP BANKSTOWN	UB
SM 339	DOWN BANKSTOWN	-
	DOWN BANKSTOWN	DB
	LOOP LINE	LL
SM 342	UP BANKSTOWN	UB
	DOWN BANKSTOWN	DB

SECTION : YAGOONA TO BIRRONG
MAP SET : SYDENHAM TO REGENTS PARK
UPDATED TO : 5 SEPTEMBER 2014

INFORMATION

CONTROLLED FROM : SEFTON PARK
RADIO AREA CODE : 057 (SYDENHAM)
054 (SEFTON PARK JUNCTION)

GRADIENT

1 IN 25

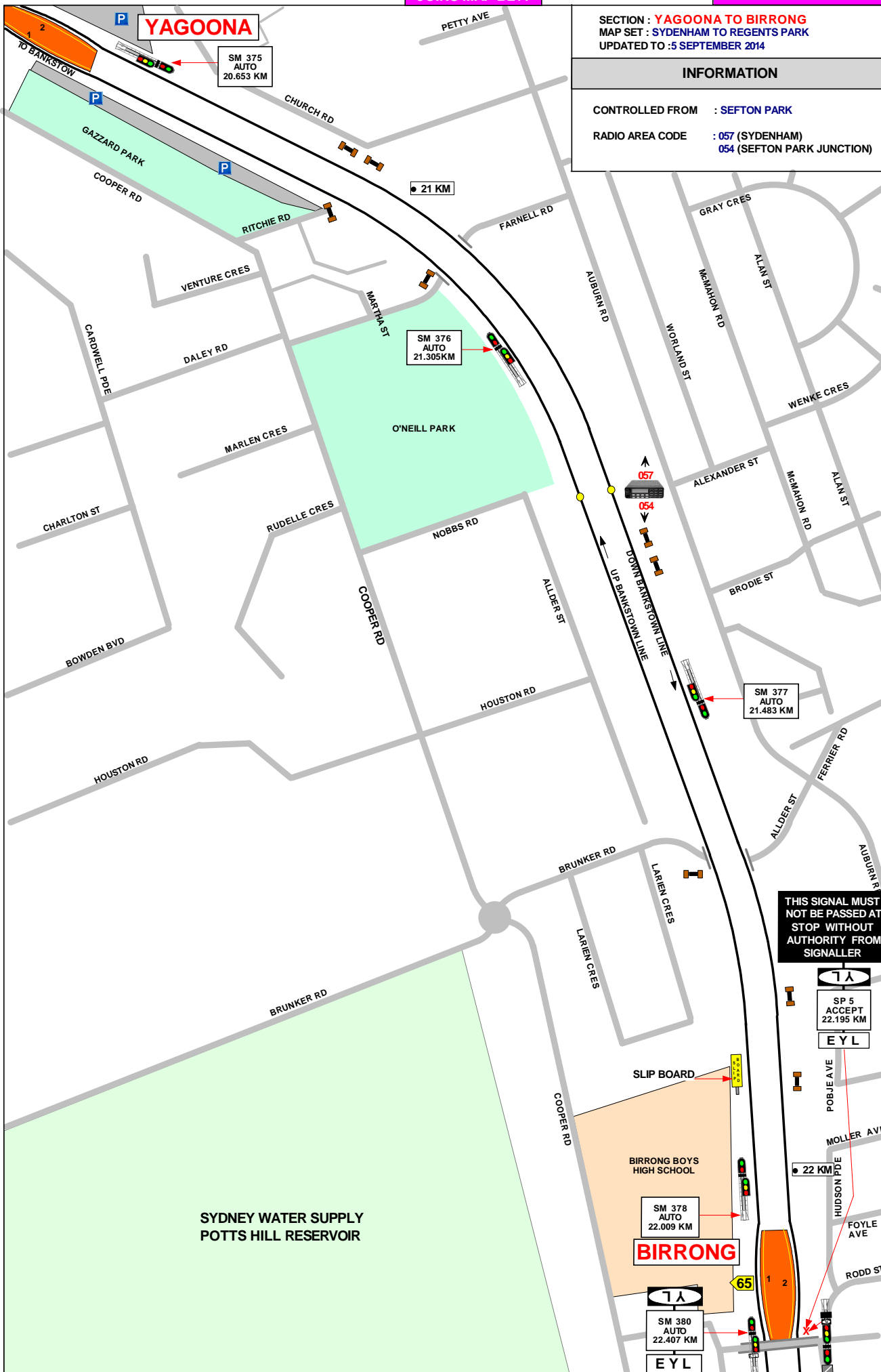
LEVEL

1 IN 79

1 IN 72

1 IN 1300

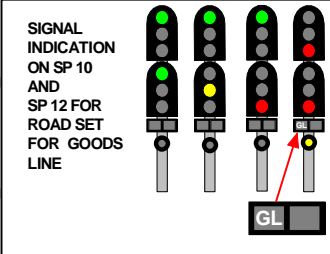
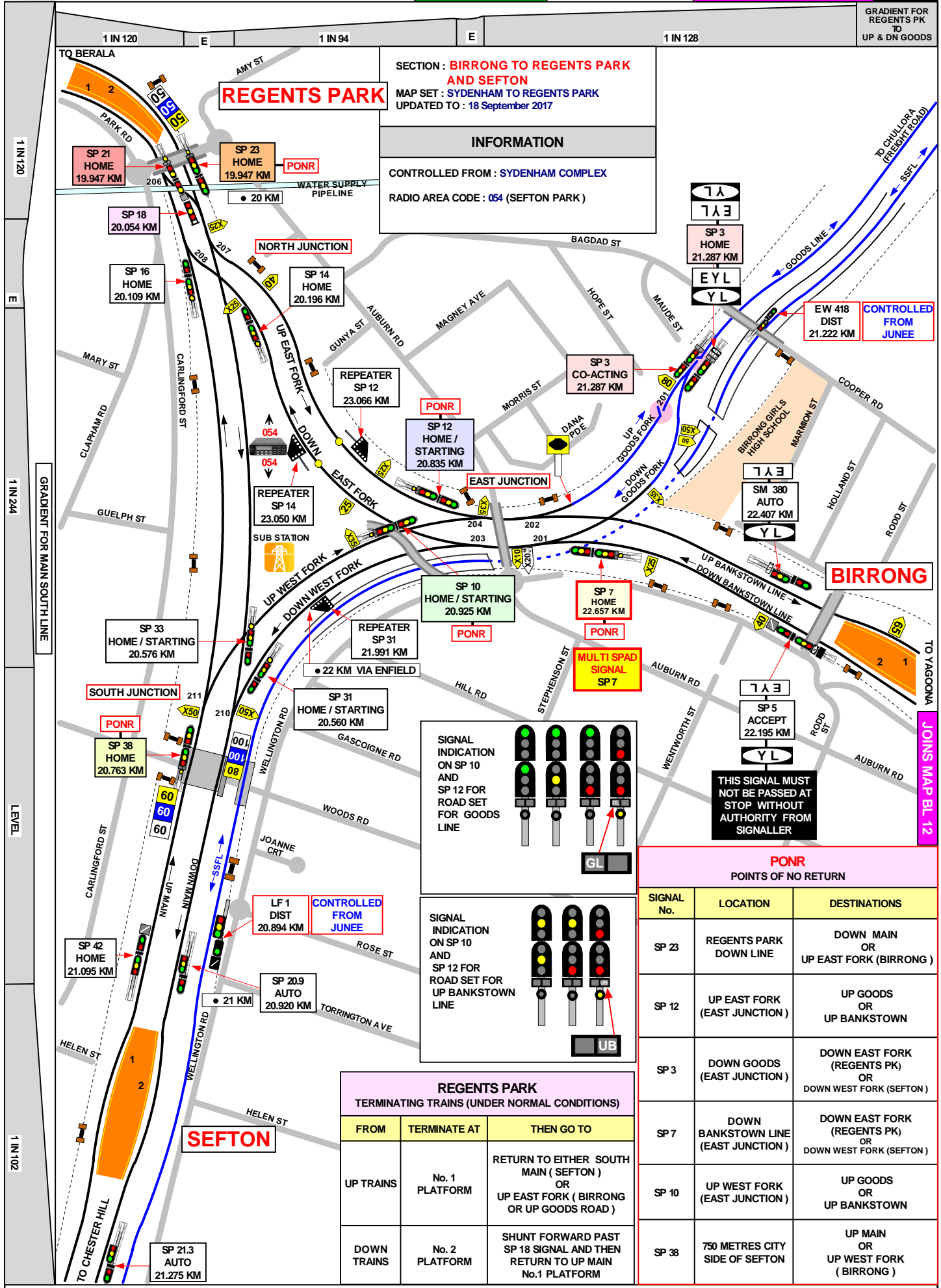
1 IN 70



GRADIENT FOR REGENTS PK TO UP & DN GOODS

SECTION : BIRRONG TO REGENTS PARK AND SEFTON
 MAP SET : SYDENHAM TO REGENTS PARK
 UPDATED TO : 18 September 2017

INFORMATION
 CONTROLLED FROM : SYDENHAM COMPLEX
 RADIO AREA CODE : 054 (SEFTON PARK)



THIS SIGNAL MUST NOT BE PASSED AT STOP WITHOUT AUTHORITY FROM SIGNALLER

PONR POINTS OF NO RETURN

SIGNAL No.	LOCATION	DESTINATIONS
SP 23	REGENTS PARK DOWN LINE	DOWN MAIN OR UP EAST FORK (BIRRONG)
SP 12	UP EAST FORK (EAST JUNCTION)	UP GOODS OR UP BANKSTOWN
SP 3	DOWN GOODS (EAST JUNCTION)	DOWN EAST FORK (REGENTS PK) OR DOWN WEST FORK (SEFTON)
SP 7	DOWN BANKSTOWN LINE (EAST JUNCTION)	DOWN EAST FORK (REGENTS PK) OR DOWN WEST FORK (SEFTON)
SP 10	UP WEST FORK (EAST JUNCTION)	UP GOODS OR UP BANKSTOWN
SP 38	750 METRES CITY SIDE OF SEFTON	UP MAIN OR UP WEST FORK (BIRRONG)

REGENTS PARK TERMINATING TRAINS (UNDER NORMAL CONDITIONS)

FROM	TERMINATE AT	THEN GO TO
UP TRAINS	No. 1 PLATFORM	RETURN TO EITHER SOUTH MAIN (SEFTON) OR UP EAST FORK (BIRRONG OR UP GOODS ROAD)
DOWN TRAINS	No. 2 PLATFORM	SHUNT FORWARD PAST SP 18 SIGNAL AND THEN RETURN TO UP MAIN No.1 PLATFORM