

TWA Worksite Protection for Hawkesbury River to Wondabyne routine network maintenance activities

DOCUMENT NO.	D2024/12593
WORK DESCRIPTION	Routine maintenance activities
WPP Number	CC19D2 10001
SCOPE:	Routine maintenance activities performed by Central Coast Territory teams on the Up and Down Main lines between 58.300 km to 62.500 km.
AUTHORISATIONS:	<p>Protection Officer (PO): PO Level 3 or 4</p> <p>Handsignallers (HS): Engineering Handsignaller Level 1 and 2</p> <p>Qualified Worker with the Work Group (QW): PO Level 1 - 4</p>
SAFETY CONTROLS – Track Work Authority (TWA) arrangements:	<ul style="list-style-type: none"> Outer Handsignaller level 1 placed at 65.500km on the Up Main line. Inner Handsignaller level 1 placed at 63.000km on the Up Main line. Handsignaller level 2 placed at HR155 DM signal on the Down Main line. Handsignaller level 2 placed at HR157 UM signal on the Up Main line. 207 points, 208 points and 210 points clipped and locked.
PRESTART REQUIREMENTS:	Nil
FURTHER INFORMATION:	Sydney Trains Network Rules and Network Procedures

Protection Officer checklist

Protection Officer's name:	Yes (Tick if Yes)	
This document has not expired 12 months beyond the issue date.		
SWI details and protection arrangements have been reviewed and validated for the assessed worksite location, including: <ul style="list-style-type: none"> On-site safety assessment has been completed for relevancy of works being undertaken The required protection details, environment and tasks are unchanged from the details of this SWI All boxes have been ticked if applicable and crossed if not applicable All fields have been completed 		
Corridor Safety Number	Protection Officer Signature	Date

Warning



If an above item does not apply, the Protection Officer must not use this Safe Work Instruction. A new worksite protection plan must be completed in accordance with NRF 014 Worksite Protection Pre-work briefing and NRF 015 Worksite Protection Plan.

TWA Worksite Protection for Hawkesbury River to Wondabyne routine network maintenance activities

Worksite Protection Pre-work Briefing

Briefing date:

Protection Officer details

name signature contact No.

Work location: **Hawkesbury River to Wondabyne**

Scope of work: **Routine maintenance activities**

Worksite protection: **TWA** Refer to Worksite Protection Plan for details

Hazards (e.g. Site specific hazards identified, including physical environment, human errors, plant and equipment)	Controls (to be implemented to eliminate or reduce the risk to the lowest practicable level)	Person responsible for Control
Crossing live lines	A qualified Protection Officer (PO) or Access Corridor Safety (ACS) must make a safety assessment to cross live lines in accordance with NGE200 and supervise workers who do not hold the PO or ACS qualification.	Qualified PO or ACS
Qualified Worker (QW) for the workgroup	Confirm and record who will be the QW for each workgroup.	PO
Approaching rail traffic	TWA implemented. All Handsignallers placed at designated locations with RTS and relevant points clipped and locked. On bi-directional lines the XYZ key has been removed. Workers immediately move to the designated safe place when instructed by the PO or QW. Confirm with Clearance Handsignallers that rail traffic is clear of the worksite before resuming work. Move clear of all tracks to the designated safe place when rail traffic approaches in any direction.	PO
Distraction	Obtain permission from PO or Qualified Worker to use electronic devices in the Danger Zone.	All
Obstructions to safe place	Agree on paths to reach designated safe places from the worksite.	PO or QW
Confusion about workers being in a safe place	Advise the PO when workers and equipment are in a designated safe place, and the location of the safe place.	QW
Changes at the worksite	Instruct workers to stop work and move to a designated safe place and notify the PO if there is a change in conditions at the worksite, including a change of QW.	QW
Limited availability of safe places on transom bridges	On bridges workers must be in a refuge before advising the PO that workers are in a safe place.	QW
Ineffective communication devices	Use GRN channel WYG CIV 1. Confirm effective communications with all Handsignallers and Qualified Workers prior to commencing TWA.	PO, QW & HSs
Misunderstanding pre-work briefing	Ask workers: 1. What method of protection are we working under? 2. What are the limits of the worksite protection? 3. Where is the safe place? 4. How will you be warned and move to the safe place if needed? 5. What are the hazards in this environment?	PO

Safe Work Instruction

TWA Worksite Protection for Hawkesbury River to Wondabyne routine network maintenance activities



Worksite Protection Plan – Track Work Authority

Protection Officer Details

name, signature, contact No., RSW or RIW No., designation, Planned duration

Workplace Supervisor details:

Type of work:

Worksite Location

on the Down Main between HR155 Signal and 39.5 Signal, on the Up Main between 39.2 Signal and HR160 UM Signal

TWA worksite kilometre location

on the Down Main Line from 58.300 km to 62.500 km, on the Up Main Line from 62.500 km to 58.300 km

Signal protection

Table with 8 columns: HR155 Sig, HR157 Sig, Sig, Sig, Sig, Sig, Sig, Sig

Handsignaller details

Table with 2 columns: name, Signal details (HR155 DM Signal, HR157 UM Signal, 65.500 (Outer Up Main), 63.000 (Inner Up Main), Sig/km)

Assurances Down Main (confirm the details provided by the Signaller)

The last rail traffic to pass the protection was [rail traffic ID] The last known location of rail traffic is [location]

Confirm that there is no approaching rail traffic between protection and worksite [checkbox]

Assurances Up Main (confirm the details provided by the Signaller)

The last rail traffic to pass the protection was [rail traffic ID] The last known location of rail traffic is [location]

Confirm that there is no approaching rail traffic between protection and worksite [checkbox]

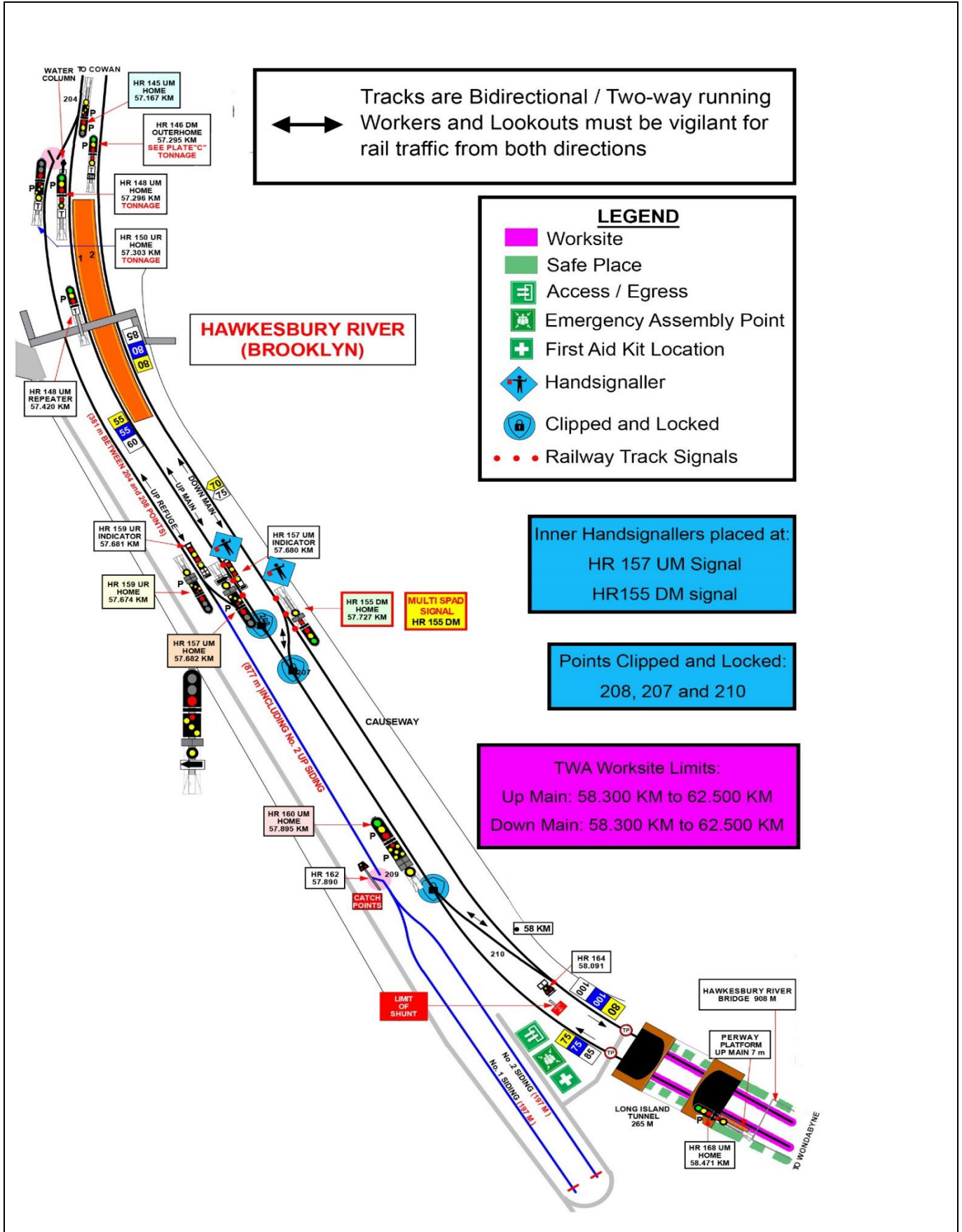
Signaller Details

Table with 3 columns: name, Panel (Hornsby North Panel, Central Coast Panel), Contact (9701 1513, 4349 9263)

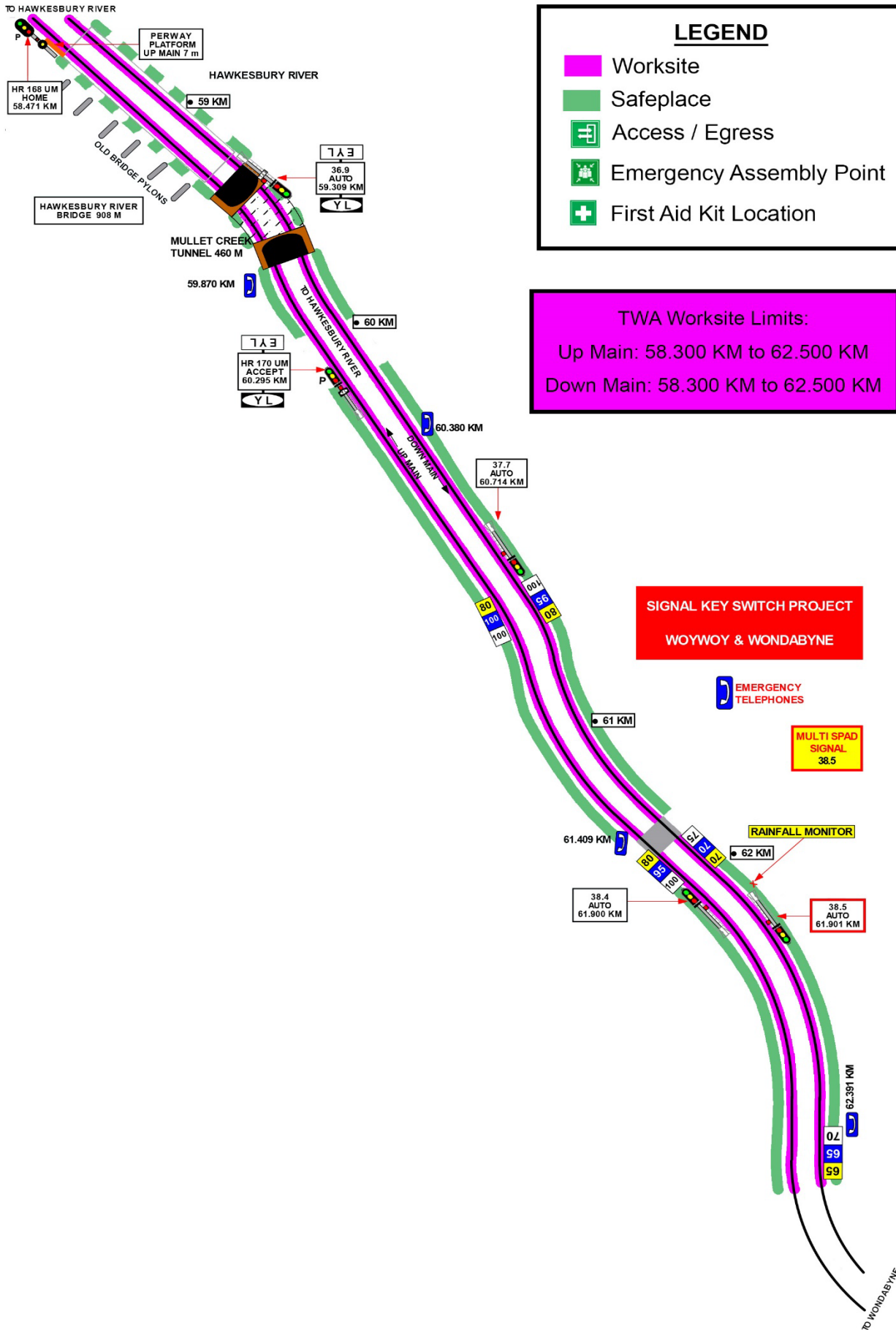
Protection Officer's log, diagrams, notes and detailed instructions are over the next pages. These are to be read and followed as part of this worksite protection plan for Track Work Authority.

TWA Worksite Protection for Hawkesbury River to Wondabyne routine network maintenance activities

Diagram



TWA Worksite Protection for Hawkesbury River to Wondabyne routine network maintenance activities



LEGEND

- Worksite
- Safeplace
- Access / Egress
- Emergency Assembly Point
- First Aid Kit Location

TWA Worksite Limits:
 Up Main: 58.300 KM to 62.500 KM
 Down Main: 58.300 KM to 62.500 KM

**SIGNAL KEY SWITCH PROJECT
 WOYWOY & WONDABYNE**

EMERGENCY TELEPHONES

MULTI SPAD SIGNAL
38.5

RAINFALL MONITOR

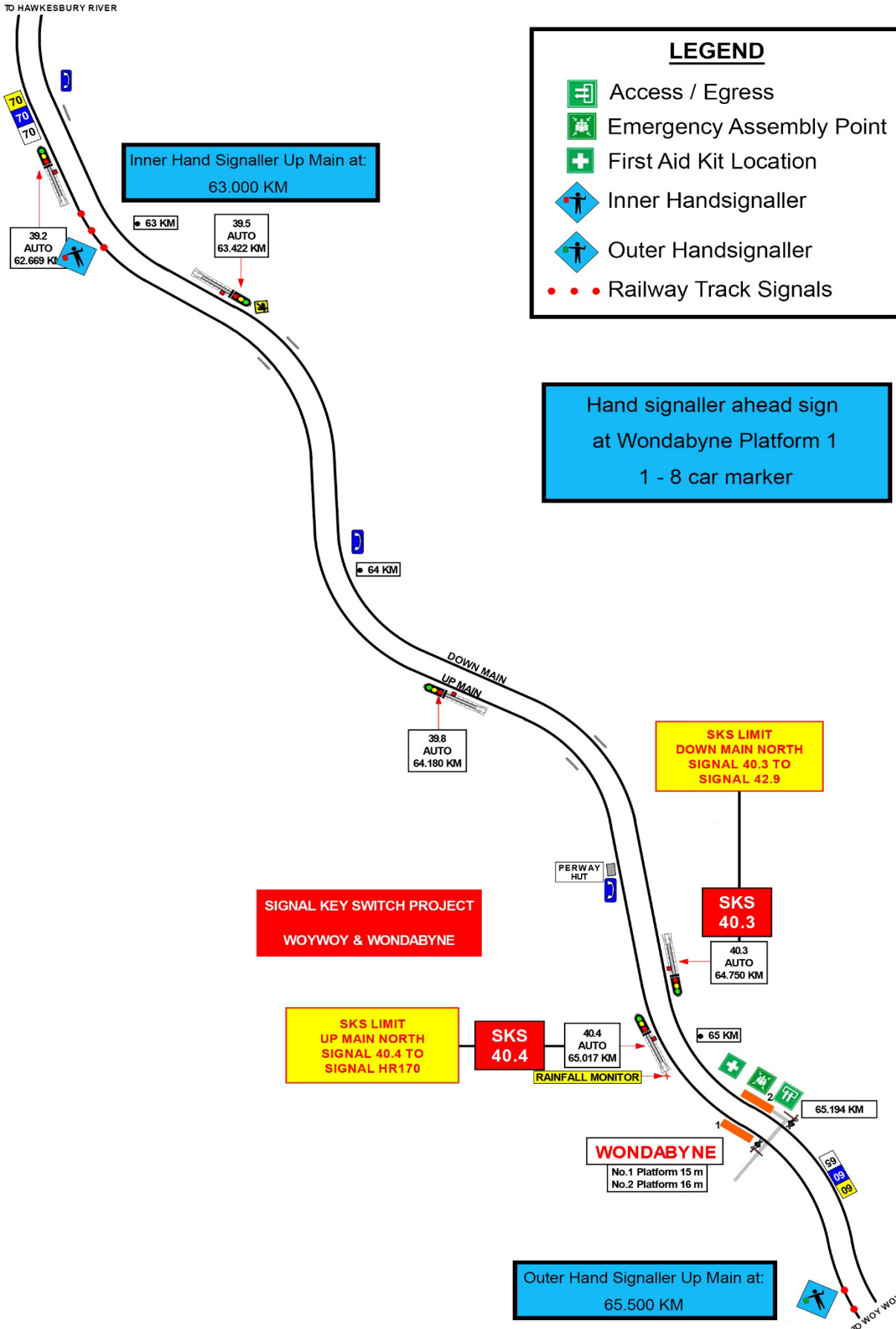
38.4 AUTO
61.900 KM

38.5 AUTO
61.901 KM

62.391 KM

TO WONDABYNE

TWA Worksite Protection for Hawkesbury River to Wondabyne routine network maintenance activities



TWA Worksite Protection for Hawkesbury River to Wondabyne routine network maintenance activities

INSTRUCTIONS:

1. Workers enter the rail corridor
2. Brief workers about the worksite protection arrangements.
3. Arrange for Handsignaller ahead sign to be placed at Wondabyne Station.
4. Place inner and outer handsignallers and confirm they have effective communications.
5. Contact Signallers to request TWA
6. After TWA is authorised, arrange for Handsignallers to confirm protection is in place.
7. Arrange for points to be clipped & locked.
8. Advise Qualified workers when work may commence.
9. Confirm with the Workplace Supervisor when work is complete and if any restrictions are required.
10. Instruct Qualified workers to ensure all workers and equipment are in a safe place.
11. Instruct Handsignallers to confirm when protection has been removed and remain in a safe place.
12. Workers leave Rail Corridor.
13. Fulfill TWA with Signallers.

