

Lookout Working Worksite Protection for Unanderra Yard Routine Network Maintenance Activities

DOCUMENT NO.	D2023/7911
WORK DESCRIPTION	Routine Network Maintenance Activities
WPP Number	SC28B 10079
SCOPE:	<p>This SWI is applicable for the worksite protection arrangements using lookout working concerning routine network maintenance, defect management and repair of assets within the limits specified below and in the attached plan.</p> <p>Work activities include:</p> <ul style="list-style-type: none"> Routine preventative and corrective work such as inspections and maintenance as appropriate for the type of protection being applied as part of this plan.
AUTHORISATIONS:	<p>Protection Officer: Protection Officer Level 1 or higher Lookout: Engineering Hand signaller Level 1 or higher or Protection Officer Level 1 or higher.</p>
SAFETY CONTROLS: Lookout working arrangements	<p>The nominated worksite location for Lookout Working is a fixed worksite and includes the Up Illawarra, Down Illawarra, Goods Siding, South Coast Branch Line between WG 1017 U and WG 1024 Home</p> <p>The Protection Officer must:</p> <ul style="list-style-type: none"> Establish Lookouts as required to watch for approaching rail traffic from all entry points Designate and instruct which safe places the workers are to use as the work is completed along the work route within the worksite limits.
PRESTART REQUIREMENTS:	<p>Protection Officer assessment checklist must be completed before instructions in this SWI are followed.</p> <p>Tools and equipment required:</p> <ul style="list-style-type: none"> Protection Officer requires a phone to contact the Signaller. Lookouts require a high-visibility arm sleeve and a whistle/horn.
FURTHER INFORMATION:	<p><i>NWT 300 Planning work in the Rail Corridor</i></p> <p><i>NWT 310 Lookout Working</i></p> <p><i>NPR 711 Using Lookouts</i></p> <p><i>NPR 751 Calculating Minimum Warning Time</i></p> <p><i>NPR 712 Protecting work from rail traffic on adjacent lines</i></p> <p><i>NGE 200 Walking in the Danger Zone</i></p> <p><i>NLA 418 Wollongong – Bomaderry (Nowra)</i></p> <p><i>Lookout Working Prohibited Locations Register</i></p>

Lookout Working Worksite Protection for Unanderra Yard Routine Network Maintenance Activities

Protection Officer assessment checklist

Protection Officer's name:		Yes (Tick if Yes)
This document has not expired 12 months beyond the issue date.		
SWI details and protection arrangements have been reviewed and validated for the assessed worksite location, including: <ul style="list-style-type: none"> On-site safety assessment has been completed for relevancy of works being undertaken The required protection details, environment and tasks are unchanged from the details of this SWI 		
The Protection Officer and Qualified Workers deploying qualifications are current and have practiced in the last 6 months. If not practiced, then a Rail Safety Coach must be contacted for guidance.		
Corridor Safety Number	Protection Officer Signature	Date



Warning

If an above item does not apply, the Protection Officer must not use this Safe Work Instruction. A new worksite protection plan must be completed in accordance with NRF 014 Worksite Protection Pre-work briefing and NRF 015 Worksite Protection Plan.

Safe Work Instruction

Lookout Working Worksite Protection for Unanderra Yard Routine Network Maintenance Activities



Worksite Protection Pre-work Briefing

Briefing date:

Protection Officer details

Work location:

Scope of work:

Worksite protection: Refer to Worksite Protection Plan for details

Hazards (e.g. Site specific hazards identified, including physical environment, human errors, plant and equipment)	Controls (to be implemented to eliminate or reduce the risk to the lowest practicable level)	Person responsible for Control
<ul style="list-style-type: none"> Approaching rail traffic 	Lookouts must be trained and competent to perform lookout duties. Lookouts must be rotated if performing lookout for extended periods of time Workers to remain within worksite limits as set out in this procedure. Lookouts must be placed as per protection plan on page 8. Workers are to stop work and move to a safe place immediately on being warned by the lookouts	Protection Officer and Lookout
<ul style="list-style-type: none"> Live adjacent lines 	Lookouts must provide warning to workers when rail traffic is approaching from the adjacent line in either direction.	Protection Officer and Lookout
Two - way running / multiple entry points into worksite	One Lookout placed watching each direction before work starts. Lookouts are to warn workers of approaching rail traffic, including rail traffic entering or travelling within the worksite. Workers are to stop work and move to a safe place.	Protection Officer and Lookout
Obstruction to Minimum Sighting Distance	Lookouts must provide warning to the workers whenever their line of sight is obstructed by passing rail traffic. Workers must stop work and move to a safe place and reassess positioning and method	Protection Officer and Lookout
Adjoining/Surrounding Worksites	Lookouts must have two independent audible warning devices that can be heard by workers over any noise generated by adjoining/surrounding worksites. Lookouts are to provide warning if their line of sight is obstructed by adjoining/surrounding worksites.	Protection Officer and Lookout
Access to / Egress from worksite	Access and egress points must be agreed prior to entering the danger zone, consideration should be given to ease of access and safest possible entry and exit points.	All
Slips, trips, falls and hazards carrying equipment	Protection Officer will assess and instruct when it is safe for workers to use <i>NGE 200 Walking in the Danger Zone</i> to move to the worksite or safe place.	All

Safe Work Instruction

Lookout Working Worksite Protection for Unanderra Yard Routine Network Maintenance Activities



Worksite Protection Plan – Lookout Working

Signaller Details

name [] Wollongong South Panel 02 4223 5599

Protection Officer Details

name [] signature [] contact No. [] RSW or RIW No. [] designation [] Planned duration []

Workplace Supervisor details: []

Type of work: Routine Network Maintenance Activities

Worksite location

on the South Coast Branch line Up Illawarra line Down Illawarra line Goods Siding between WG 1017 U and WG 1024 Home

Worksite assessment

Has the Lookout Working Prohibited Locations Register been consulted? Yes []

Warning method

Horn/Whistle Touch

Minimum Warning Time Calculations

Maximum track speed 100 km/h

Number of Lookouts used 2 Position of Lookouts 87.752 km to 88.874 km

Number of additional Lookouts* used 0 Position of Lookouts - km To - km

Note - Lookouts are relocated to positions within these KMs as workers move along the worksite.

Table with 3 columns: See Time (S), Move Time (M), Safe Time, Minimum Warning Time (MWT), Track speed, Minimum Sighting Distance as calculated. Rows show calculations for 100 km/h, 90 km/h, and 50 km/h.

Note – Additional MWT calculations can be recorded in the Protection Officer’s Diary.

Where are the safe places identified for the Lookouts and the workers?

Lookouts: Up and Down Cess

Workers: Up and Down Cess

Ensure the workers have been briefed about these work details Yes []

Diagrams, notes, and detailed instructions are over the next pages. These are to be read and followed as part of this worksite protection plan for Lookout Working.

Lookout Working Worksite Protection for Unanderra Yard Routine Network Maintenance Activities

INSTRUCTIONS:

1. Workers enter the rail corridor via **access gate 100 88.341 D**
2. Protection Officer briefs workers about the worksite protection arrangements.
3. Protection Officer contacts Wollongong South Panel and tells the Signaller about the use of Lookout Working.
4. Establish Lookouts at designated locations.
5. Workers start work up to designated locations.
6. Workers move to safe place.
7. Re-establish Lookouts at next designated location.
8. Repeat steps 6-8 until work is complete.
9. Workers move to a safe place.
10. Recall lookouts.
11. Workers egress the worksite via **access gate 100 88.341 D**
12. Protection Officer contacts Wollongong South Panel to end Lookout Working.

ADDITIONAL DETAILS

Obstruction to Minimum Sighting Distance

Stabled rail traffic on any tracks and conditions on the day may obstruct minimum sighting distance. When this hazard is identified, workers must stop work and move to a safe place until the Protection Officer makes an assessment and relocates lookouts to achieve the required minimum sighting distance.

Work is only to be performed on sections of track highlighted on the Diagram. Under this RNMWPP work cannot be done on the

- Down Illawarra between the limits of the limits of the platform 1
- Up Illawarra between B Frame and C Frame

LOOKOUTS



Image 1: Wollongong Side of worksite facing Wollongong (Near WG 1017 U)



Image 2: Wollongong end of the worksite facing Dapto



Image 3: Lookouts view (Adjacent to B frame) Facing Wollongong



Image 4: Lookouts view (Adjacent to B frame) Facing Dapto

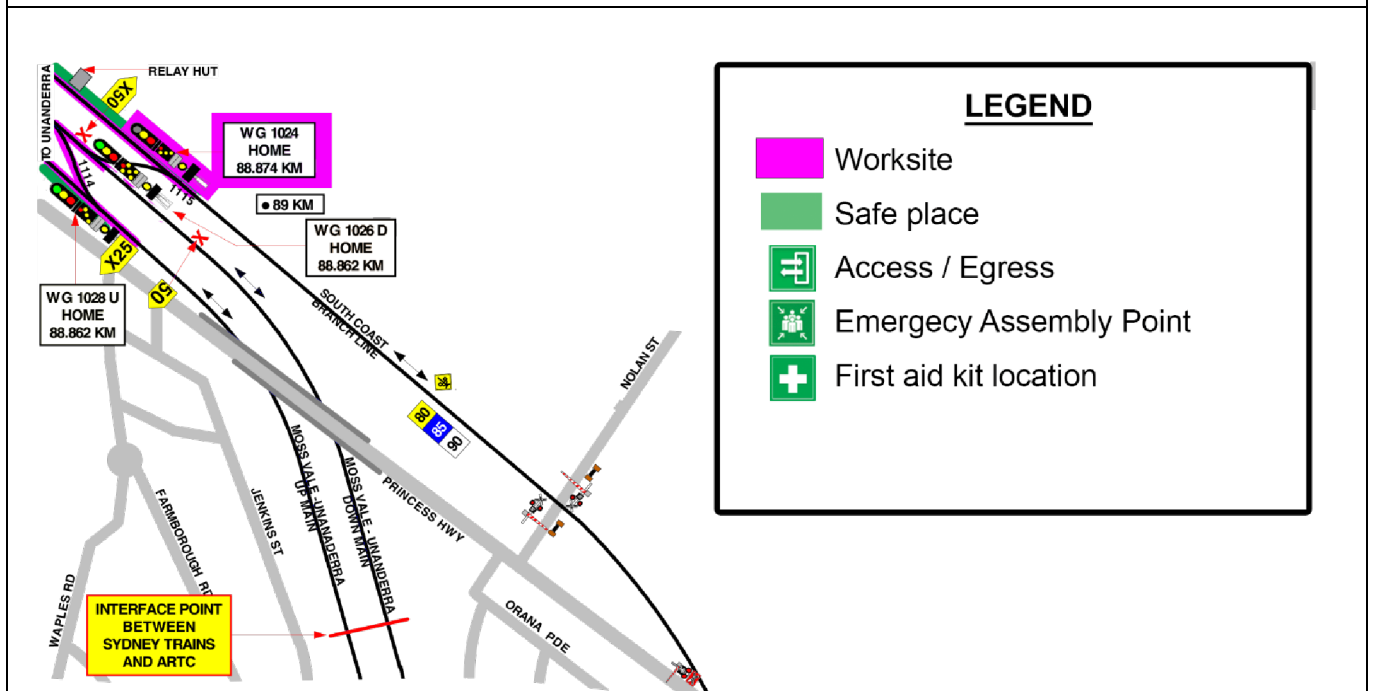
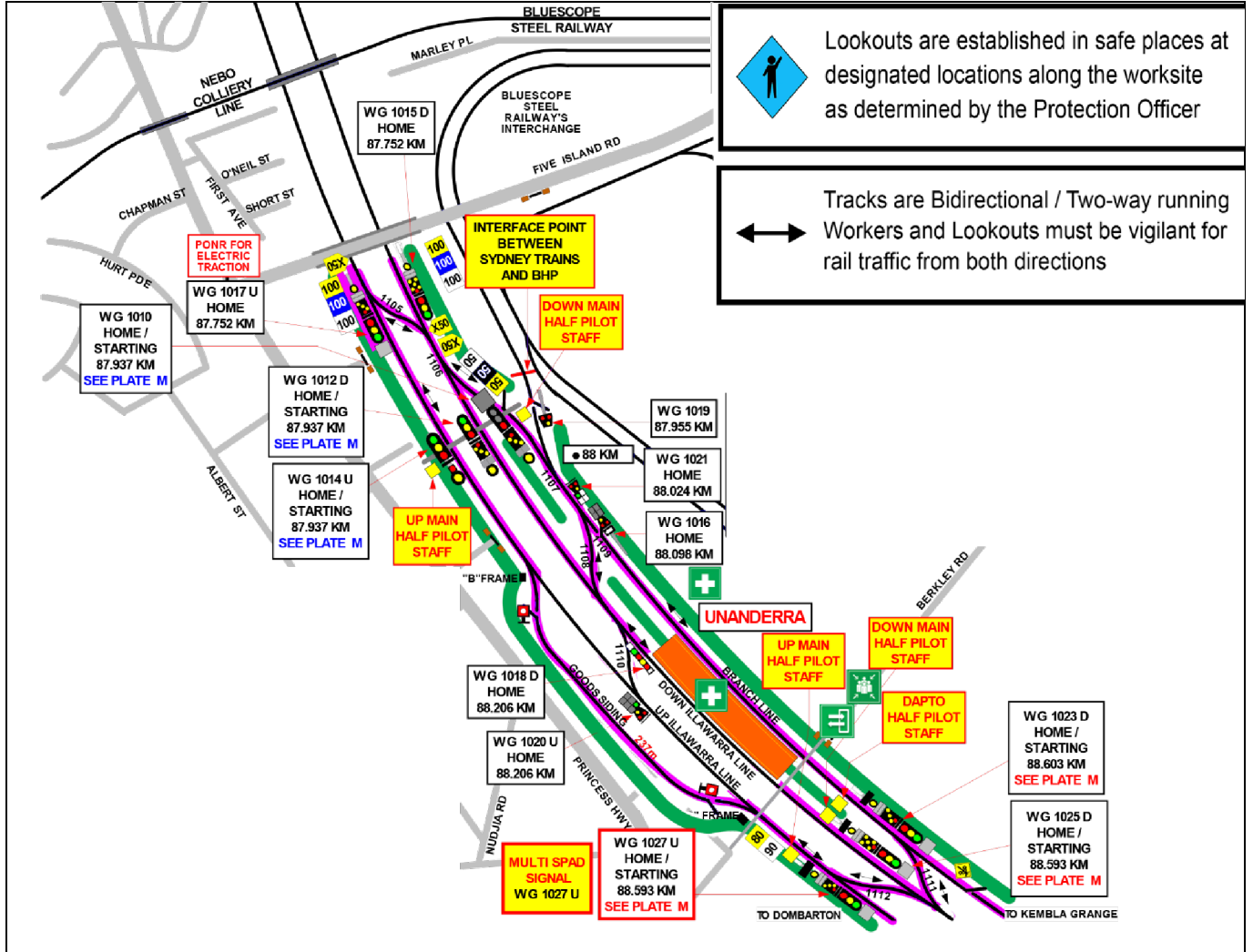


Image 5: Lookouts view Dapto end of the worksite facing Dapto



Image 6: Lookouts view Dapto end of the worksite facing Wollongong

Diagram



Protection Officer's diary

SWI Custodian: Maintenance Operations Manager South Coast Territory
 SWI Approver: Associate Director Network Operation

OFFICIAL
 UNCONTROLLED COPY WHEN PRINTED

Issue Date: 03/07/2024
 Version: 1.1
 Page 9 of 10

