

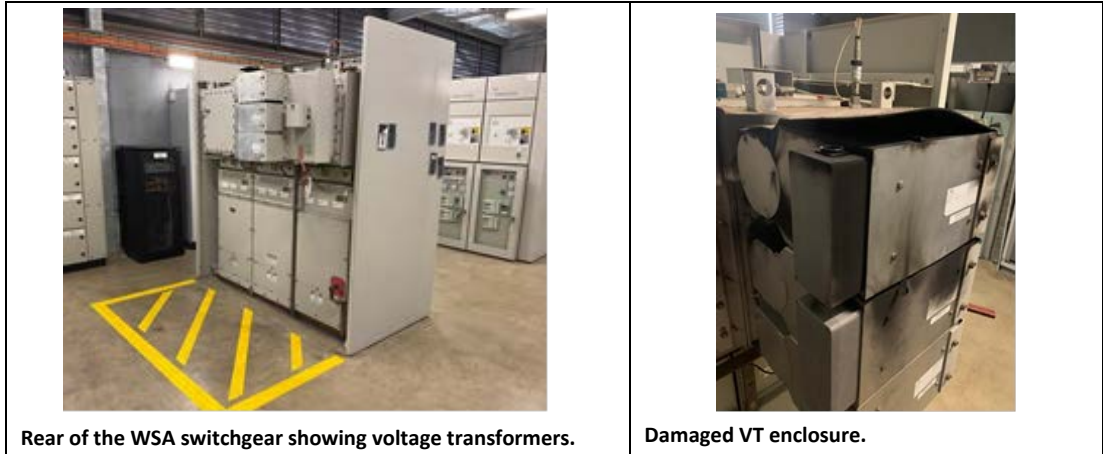
Safety Alert
Sharing information to prevent incidents

Target Audience

Persons undertaking work at substations with Schneider/AREVA WSA 33kV Switchgear. The equipment is installed at approximately forty (40) substations throughout the high-voltage electricity distribution network.

The issue

On 28 April 2021 a fault occurred resulting in an arc flash and an internal fault destroying a Schneider WSA voltage transformer at Gymea substation. The root cause is under investigation.



While no-one was present, this incident highlights the potential hazard associated with this type of switchgear. Known locations containing Schneider/AREVA WSA switchgear are:

ARGYLE SS	GLENFIELD SOUTH SS	SEVEN HILLS SS
ART GALLERY SS	GYMEA SS	STRATHFIELD SS
ASHFIELD SS	GUILDFORD SS	TOONGABBIE SS
AUBURN SS	INGLEBURN SS	WARRAWEE SS
BEECROFT SS	LEPPINGTON SS	WARWICK FARM SS
BLACKTOWN NTH SS	LINDFIELD SS	WAVERTON SS
CAMPBELLTOWN SS	MEEKS RD SS	WEST RYDE SS
EDGECLIFF SS	MINTO SS	YAGOONA SS
EDMONDSON PARK SS	NEWTOWN SS	YENNORA SS
EPPING SS	REVESBY SS	
ERSKINEVILLE SS	SCHOFIELDS SS	

What you must do

1. Line Managers:
 - a. must ensure workers are wearing *Personal Protective Equipment* (PPE) appropriate for the hazards present at the work location and the tasks they will perform;
 - b. must ensure persons entering substation with WSA switchgear shall wear arc rated PPE in accordance with Safe Work Instruction D2013 80874 - PPE for Electrical Work;
 - c. Instruct authorised staff not use the window at the rear of the switchgear to determine if the safety earths have been applied – the visual indication (“semaphore”) at the front shall be used (note the Local Instructions);
 - d. Remind authorised staff high voltage switches and circuit breakers must be operated remotely via SCADA (i.e. ICON) in accordance with the Electrical Network Safety Rules (ENSR) except when testing or completing a maintenance task.

Schnieder/AREVA WSA 33kV Switchgear

Safety hazard arising from arc-flash and explosion

Safety Alert

Sharing information to prevent incidents

2. Local Instructions for this equipment shall be amended by *ESI Electrical* to incorporate sub-point (c) above.
3. Persons entering substations should, to every possible extent:
 - a. minimise the time spent behind WSA switchgear;
 - b. stay at least 1.5m away from the rear of the live (energised) WSA switchgear.

In the event of an arc-flash, or electric shock call ICON on 9379-4911. Medical attention is required regardless of the initial symptoms.

All electric shock incidents must be reported to ICON-Elec on 9379-4911 and the Incident hotline.

If you have any questions please talk to your Safety Professional or Line Manager.

Please refer to link below for more information on PPE for Electrical Work.

https://railsafe.org.au/_data/assets/pdf_file/0008/38375/D2013-80874-V2.1-PPE-for-Electrical-Work.pdf

Chadi Chalhoub
A/Executive Director SEQR