

ASB Worksite Protection for Liverpool Routine Network Maintenance Activities

DOCUMENT NO.	D2023/5737
WORK DESCRIPTION	Routine network maintenance activities- ASB
WPP Number	SW14C 14040
SCOPE:	<p>This SWI is applicable for the worksite protection arrangements using ASB for routine network maintenance, defect management and repair of assets within the limits specified below and in the attached plan.</p> <p>Work activities include:</p> <ul style="list-style-type: none"> Routine preventative and corrective work such as inspections and maintenance as appropriate for the type of protection being applied as part of this plan.
AUTHORISATIONS:	Protection Officer: Protection Officer Level 1 or higher
SAFETY CONTROLS - Absolute Signal Blocking (ASB) arrangements:	<p>ASB established to exclude rail traffic on the:</p> <ul style="list-style-type: none"> Liverpool transit road from LL205 Signal To LL223 Signal. <p>For reference only;</p> <p>The assessed ASB protection is:</p> <ul style="list-style-type: none"> LL201 Signal at STOP with blocking facilities applied LL207 Signal at STOP with blocking facilities applied LL218 Signal at STOP with blocking facilities applied LL214 Signal at STOP with blocking facilities applied LL228 Signal at STOP with blocking facilities applied LL230 Signal at STOP with blocking facilities applied LL232 Signal at STOP with blocking facilities applied 260 Points secured to prevent rail traffic 262 Points secured to prevent rail traffic 264 Points secured to prevent rail traffic 266 Points secured to prevent rail traffic 269 Points secured to prevent rail traffic
PRESTART REQUIREMENTS:	<p>Protection Officer assessment checklist must be completed before instructions in this SWI are followed.</p> <p>Tools and equipment required:</p> <ul style="list-style-type: none"> Protection Officer requires a phone to contact the Signaller.
FURTHER INFORMATION:	<p>NWT 300 Planning work in the Rail Corridor</p> <p>NWT 308 Absolute Signal Blocking</p> <p>NPR 703 Using Absolute Signal Blocking</p> <p>NGE 200 Walking in the Danger Zone</p> <p>NLA 500 Lidcombe – Campbelltown</p>

ASB Worksite Protection for Liverpool Routine Network Maintenance Activities

Protection Officer assessment checklist

Protection Officer's name:		Yes (Tick if Yes)
This document has not expired 12 months beyond the issue date.		
On-site safety assessment has been completed and additional hazards and controls recorded on the pre-work briefing (Page 3).		
SWI details and protection arrangements have been reviewed and validated for the assessed worksite location.		
Corridor Safety Number	Protection Officer Signature	Date

Warning



If an above item does not apply, the Protection Officer must not use this Safe Work Instruction. A new worksite protection plan must be completed in accordance with NRF 014 Worksite Protection Pre-work briefing and NRF 015 Worksite Protection Plan.

Safe Work Instruction**ASB Worksite Protection for Liverpool Routine Network Maintenance Activities****Worksite Protection Pre-work Briefing**Briefing date: / / **Protection Officer details** name signature contact No.Work location: Scope of work: Worksite protection: Refer to Worksite Protection Plan for details

Hazards (e.g. Site specific hazards identified, including physical environment, human errors, plant and equipment)	Controls (to be implemented to eliminate or reduce the risk to the lowest practicable level)	Person responsible for Control
Approaching rail traffic	Implement ASB as per Network Rules and Procedures. Workers to remain within worksite limits. Workers are to stop work and move to a safe place immediately on being warned by the Protection Officer	Protection Officer
Adjacent live lines	Designated work and walk areas as instructed by the Protection Officer. Workers must remain within the ASB nominated worksite location limits whilst work is being performed.	Protection Officer
Access to / Egress from worksite	Access and egress points must be agreed prior to entering the danger zone, consideration should be given to ease of access and safest possible entry and exit points.	All
Mobile phone distraction	Mobile phones use is not permitted in the danger zone unless being used by maintenance staff for critical maintenance communications or recording of defects	

ASB Worksite Protection for Liverpool Routine Network Maintenance Activities



Safe Work Instruction**ASB Worksite Protection for Liverpool Routine Network Maintenance Activities****Worksite Protection Plan – Absolute Signal Blocking****1. ASB request – Protection Officer Details**

name	signature	contact No.
RSW or RIW No.	designation	Planned Duration

Type of work:

2. Worksite location

on the from to

3. Protection to be used

Signal(s) at STOP with blocking facilities applied	Points secured
--	----------------

Protection is required from other Signallers at

4. Assurances

All points of entry into the affected portion of track are protected and blocking facilities applied ☐

The last rail traffic to pass the protection was The last known location of rail traffic is

Confirm that there is no rail traffic between the protection and the worksite ☐

5. Authorisation

Authorised by Signaller

name	Sefton panel	hr	/	/
------	--------------	----	---	---

Protection Number	<input type="text"/>	Notes	<input type="text"/>
-------------------	----------------------	-------	----------------------

6. Temporarily Suspending ASB

Provide the name and worksite location <input type="checkbox"/>	Provide the name and worksite location <input type="checkbox"/>	Provide the name and worksite location <input type="checkbox"/>
Workers and equipment are clear of the Danger Zone <input type="checkbox"/>	Workers and equipment are clear of the Danger Zone <input type="checkbox"/>	Workers and equipment are clear of the Danger Zone <input type="checkbox"/>
Provide protection number <input type="checkbox"/>	Provide protection number <input type="checkbox"/>	Provide protection number <input type="checkbox"/>
ASB suspended at <input type="text"/> hr	ASB suspended at <input type="text"/> hr	ASB suspended at <input type="text"/> hr

7. Re-establish ASB assurances

The worksite location is identical <input type="checkbox"/>	The worksite location is identical <input type="checkbox"/>	The worksite location is identical <input type="checkbox"/>
All points of entry into the affected portion of track are protected and blocking facilities applied <input type="checkbox"/>	All points of entry into the affected portion of track are protected and blocking facilities applied <input type="checkbox"/>	All points of entry into the affected portion of track are protected and blocking facilities applied <input type="checkbox"/>
The last rail traffic to pass the protection was <input type="text" value="rail traffic ID"/>	The last rail traffic to pass the protection was <input type="text" value="rail traffic ID"/>	The last rail traffic to pass the protection was <input type="text" value="rail traffic ID"/>
The last known location of rail traffic is <input type="text" value="location"/>	The last known location of rail traffic is <input type="text" value="location"/>	The last known location of rail traffic is <input type="text" value="location"/>
There is no approaching rail traffic between the protection and the worksite <input type="checkbox"/>	There is no approaching rail traffic between the protection and the worksite <input type="checkbox"/>	There is no approaching rail traffic between the protection and the worksite <input type="checkbox"/>
ASB re-established at <input type="text"/> hr	ASB re-established at <input type="text"/> hr	ASB re-established at <input type="text"/> hr
Protection Number <input type="text"/>	Protection Number <input type="text"/>	Protection Number <input type="text"/>

8. Ending

Provide name and worksite location ☐ Workers and equipment clear of the Danger Zone ☐ Provide protection number ☐ Ended at hr

ASB Worksite Protection for Liverpool Routine Network Maintenance Activities

6. Temporarily Suspending ASB

Provide the name and worksite location	<input type="checkbox"/>	Provide the name and worksite location	<input type="checkbox"/>	Provide the name and worksite location	<input type="checkbox"/>
Workers and equipment are clear of the Danger Zone	<input type="checkbox"/>	Workers and equipment are clear of the Danger Zone	<input type="checkbox"/>	Workers and equipment are clear of the Danger Zone	<input type="checkbox"/>
Provide protection number	<input type="checkbox"/>	Provide protection number	<input type="checkbox"/>	Provide protection number	<input type="checkbox"/>
ASB suspended at	<input type="text"/> hr	ASB suspended at	<input type="text"/> hr	ASB suspended at	<input type="text"/> hr

7. Re-establish ASB assurances

The worksite location is identical	<input type="checkbox"/>	The worksite location is identical	<input type="checkbox"/>	The worksite location is identical	<input type="checkbox"/>
All points of entry into the affected portion of track are protected and blocking facilities applied	<input type="checkbox"/>	All points of entry into the affected portion of track are protected and blocking facilities applied	<input type="checkbox"/>	All points of entry into the affected portion of track are protected and blocking facilities applied	<input type="checkbox"/>
The last rail traffic to pass the protection was	<input type="text"/> rail traffic ID	The last rail traffic to pass the protection was	<input type="text"/> rail traffic ID	The last rail traffic to pass the protection was	<input type="text"/> rail traffic ID
The last known location of rail traffic is	<input type="text"/> location	The last known location of rail traffic is	<input type="text"/> location	The last known location of rail traffic is	<input type="text"/> location
There is no approaching rail traffic between the protection and the worksite	<input type="checkbox"/>	There is no approaching rail traffic between the protection and the worksite	<input type="checkbox"/>	There is no approaching rail traffic between the protection and the worksite	<input type="checkbox"/>
ASB re-established at	<input type="text"/> hr	ASB re-established at	<input type="text"/> hr	ASB re-established at	<input type="text"/> hr
Protection Number	<input type="text"/>	Protection Number	<input type="text"/>	Protection Number	<input type="text"/>

Notes





6. Temporarily Suspending ASB

Provide the name and worksite location	<input type="checkbox"/>	Provide the name and worksite location	<input type="checkbox"/>	Provide the name and worksite location	<input type="checkbox"/>
Workers and equipment are clear of the Danger Zone	<input type="checkbox"/>	Workers and equipment are clear of the Danger Zone	<input type="checkbox"/>	Workers and equipment are clear of the Danger Zone	<input type="checkbox"/>
Provide protection number	<input type="checkbox"/>	Provide protection number	<input type="checkbox"/>	Provide protection number	<input type="checkbox"/>
ASB suspended at	<input type="text"/> hr	ASB suspended at	<input type="text"/> hr	ASB suspended at	<input type="text"/> hr

7. Re-establish ASB assurances

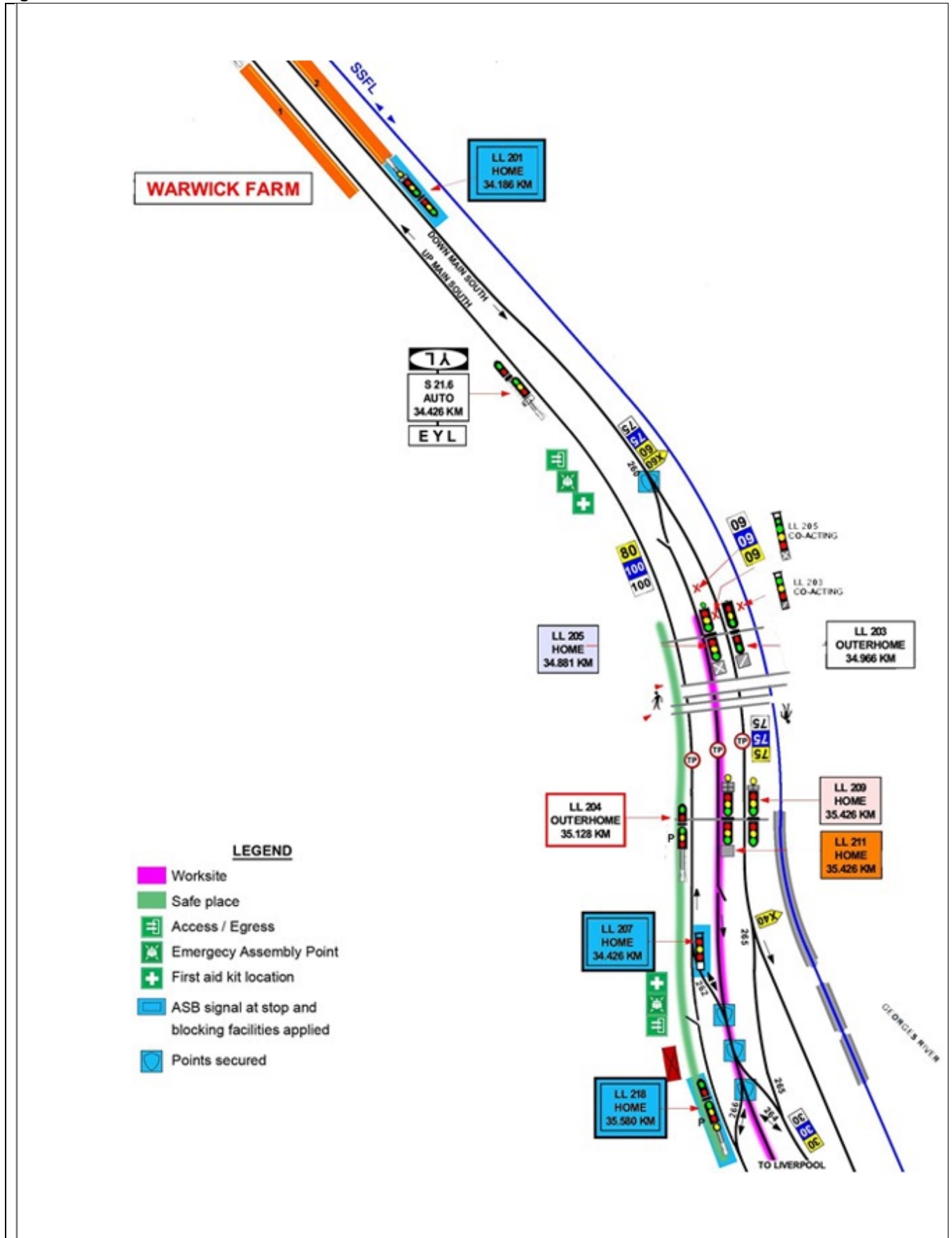
The worksite location is identical	<input type="checkbox"/>	The worksite location is identical	<input type="checkbox"/>	The worksite location is identical	<input type="checkbox"/>
All points of entry into the affected portion of track are protected and blocking facilities applied	<input type="checkbox"/>	All points of entry into the affected portion of track are protected and blocking facilities applied	<input type="checkbox"/>	All points of entry into the affected portion of track are protected and blocking facilities applied	<input type="checkbox"/>
The last rail traffic to pass the protection was	<input type="text"/> rail traffic ID	The last rail traffic to pass the protection was	<input type="text"/> rail traffic ID	The last rail traffic to pass the protection was	<input type="text"/> rail traffic ID
The last known location of rail traffic is	<input type="text"/> location	The last known location of rail traffic is	<input type="text"/> location	The last known location of rail traffic is	<input type="text"/> location
There is no approaching rail traffic between the protection and the worksite	<input type="checkbox"/>	There is no approaching rail traffic between the protection and the worksite	<input type="checkbox"/>	There is no approaching rail traffic between the protection and the worksite	<input type="checkbox"/>
ASB re-established at	<input type="text"/> hr	ASB re-established at	<input type="text"/> hr	ASB re-established at	<input type="text"/> hr
Protection Number	<input type="text"/>	Protection Number	<input type="text"/>	Protection Number	<input type="text"/>

ASB Worksite Protection for Liverpool Routine Network Maintenance Activities

INSTRUCTIONS:	<ol style="list-style-type: none">Workers enter the rail corridor via access gate S00 35.327 U (Image 1) and entry to rail corridor via S00 35.459 U (Image 2).Protection Officer briefs workers about the worksite protection arrangements.Protection Officer contacts the Signaller at Sefton Panel to request ASB.After ASB has been authorised. start work within the limits of the nominated worksite location.After work is complete, workers move to a safe place.Protection Officer contacts the Signaller at Sefton Panel to end ASB.Repeat steps 4 – 6 until work is complete work.All workers egress the rail corridor via S00 35.327 U	
ADDITIONAL DETAILS	<p><u>Suspending ASB</u></p> <p>If the ASB is required to be suspended, the Protection Officer must make sure all workers and equipment are clear of the Danger Zone and are in a safe place before suspending the ASB as per NPR 703 Using Absolute Signal Blocking</p>	
IMAGES:		
	<p>Image 1: Access gate S00 35.327 U near 8 college St carpark gate</p>	<p>Image 2: Access gate S00 35.459 U</p>
		
	<p>Image 3: View of worksite towards Warwick Farm</p>	<p>Image 4: view of worksite towards Liverpool.</p>

ASB Worksite Protection for Liverpool Routine Network Maintenance Activities

Diagram



ASB Worksite Protection for Liverpool Routine Network Maintenance Activities

