

DRIVERS ROUTE KNOWLEDGE DIAGRAMS

OLD MAIN SOUTH LINE

GRANVILLE

MERRYLANDS

GUILDFORD

YENNORA

FAIRFIELD

CANLEY VALE

CABRAMATTA

Effective Date: January 2021

Version: 4.23

Explanatory Notes:

Navigate to your area of interest via the station index or by using links created in Adobe bookmarks.

This document is approved for **route knowledge only**.

Do not use these diagrams for any safety related purpose without validating the information against a controlled source or in the field.

Information in these diagrams is uncontrolled.

Please report any updates to
gis.support@transport.nsw.gov.au

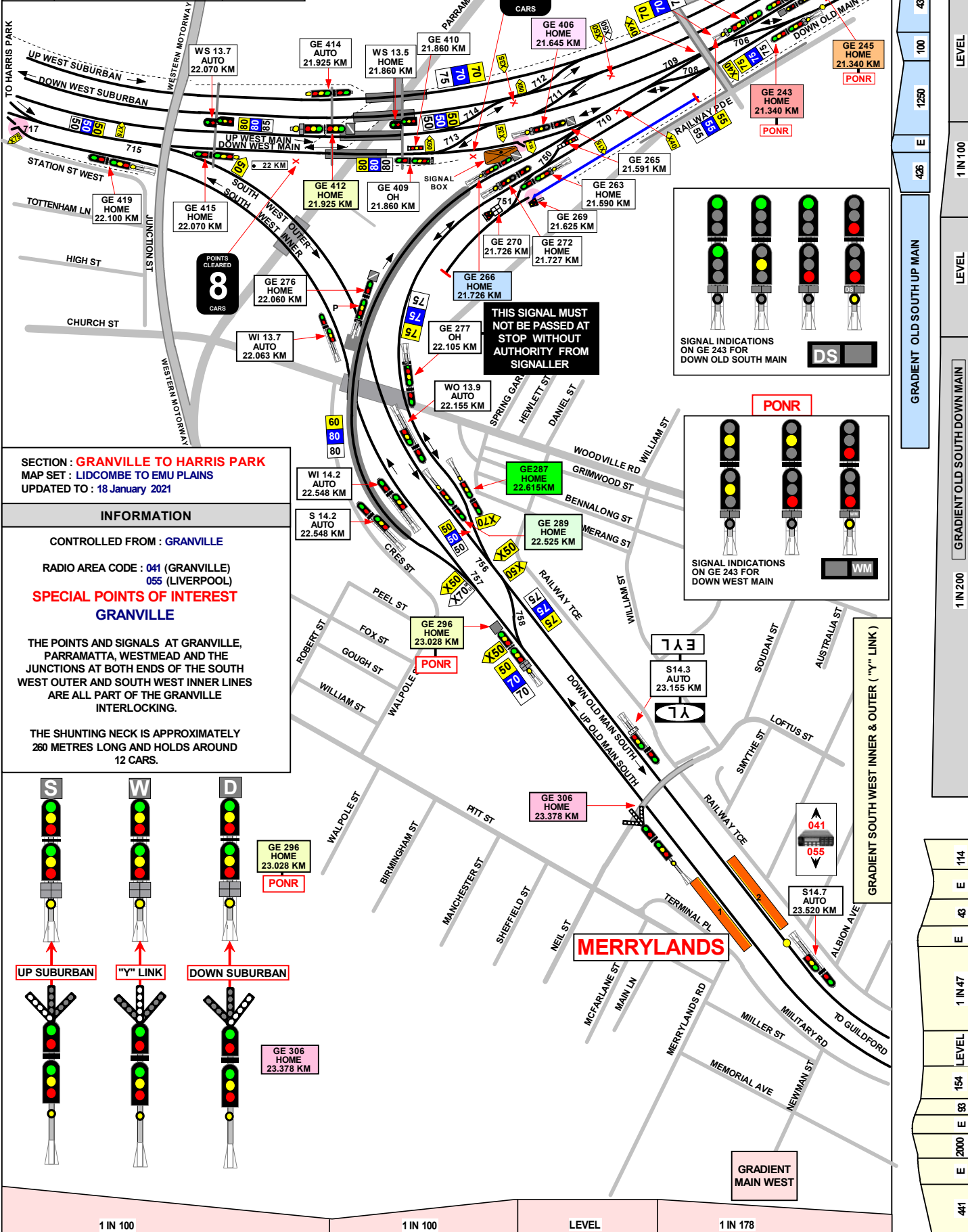


Copyright: Sydney Trains

Ownership: Geospatial Services,
Asset Information Systems & Services

Location: TRIM Record No.D2015/567

SIGNAL	DESTINATION	INDICATION
GE 424	UP WEST MAIN (M)	-
	DOWN WEST MAIN (M)	D
	SOUTH WEST OUTER (M)	S
	UP WEST MAIN (S)	UW
	DOWN WEST MAIN (S)	DW
	SOUTH WEST OUTER (S)	SO



SECTION : GRANVILLE TO HARRIS PARK
MAP SET : LIDCOMBE TO EMU PLAINS
 UPDATED TO : 18 January 2021

INFORMATION

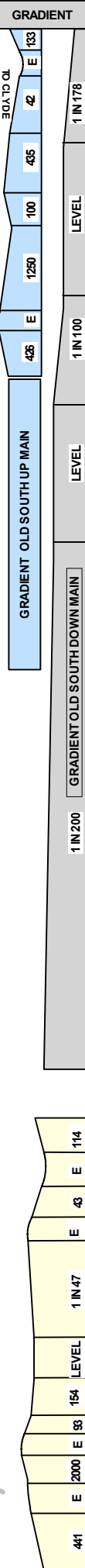
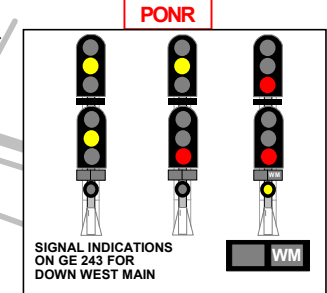
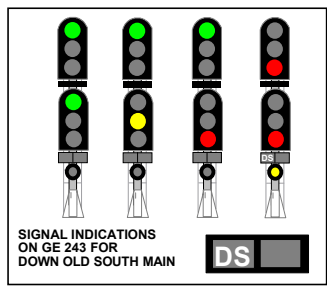
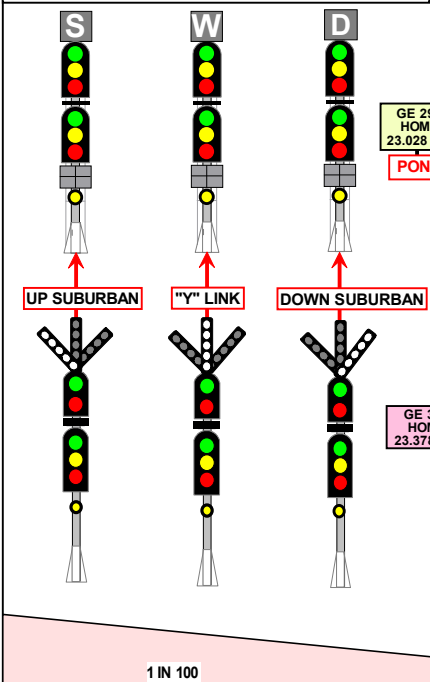
CONTROLLED FROM : **GRANVILLE**

RADIO AREA CODE : 041 (GRANVILLE)
 055 (LIVERPOOL)

SPECIAL POINTS OF INTEREST
GRANVILLE

THE POINTS AND SIGNALS AT GRANVILLE, PARRAMATTA, WESTMEAD AND THE JUNCTIONS AT BOTH ENDS OF THE SOUTH WEST OUTER AND SOUTH WEST INNER LINES ARE ALL PART OF THE GRANVILLE INTERLOCKING.

THE SHUNTING NECK IS APPROXIMATELY 260 METRES LONG AND HOLDS AROUND 12 CARS.



SIGNAL	DESTINATION	INDICATION
GE 243	DOWN OLD SOUTH MAIN (M)	-
	DOWN WEST MAIN (M)	-
	DOWN OLD SOUTH MAIN (S)	DS
	DOWN WEST MAIN (S)	WM

SIGNAL	DESTINATION	INDICATION
GE 245	DOWN WEST MAIN (S)	WM
	DOWN OLD SOUTH MAIN (M)	S
	DOWN WEST MAIN (M)	W
	UP OLD SOUTH MAIN (S)	US
	UP OLD SOUTH MAIN (S)	US

SIGNAL	DESTINATION	INDICATION
GE 247	DOWN WEST MAIN (M)	-
	DOWN WEST SUBURBAN (M)	-
	DOWN WEST MAIN (S)	WM
	DOWN WEST SUBURBAN (S)	WS

SIGNAL	DESTINATION	INDICATION
GE 263	DOWN OLD SOUTH MAIN (M)	-
	DOWN SHUNTING NECK (S)	SN
	DOWN OLD SOUTH MAIN (S)	DS

SIGNAL	DESTINATION	INDICATION
GE 265	DOWN OLD SOUTH MAIN	SN
	DOWN SHUNTING NECK	DS

SIGNAL	DESTINATION	INDICATION
GE 266	UP SUBURBAN (M)	-
	UP SUBURBAN (S)	US
	DOWN SUBURBAN (S)	DS

SIGNAL	DESTINATION	INDICATION
GE 270	UP SUBURBAN	US
	DOWN SUBURBAN	DS
	PERWAY SIDING	PS

SIGNAL	DESTINATION	INDICATION
GE 272	UP SUBURBAN (M)	-
	UP SUBURBAN (S)	US
	DOWN SUBURBAN (S)	DS

SIGNAL	DESTINATION	INDICATION
GE 287	DOWN OLD SOUTH MAIN (M)	-
	DOWN OLD SOUTH MAIN (S)	DS
	UP OLD SOUTH MAIN (S)	-

SIGNAL	DESTINATION	INDICATION
GE 289	DOWN OLD SOUTH MAIN (M)	-
	DOWN OLD SOUTH MAIN (S)	DS
	UP OLD SOUTH MAIN (S)	-

SIGNAL	DESTINATION	INDICATION
GE 296	UP OLD SOUTH MAIN (M)	S
	DOWN OLD SOUTH MAIN (M)	D
	SOUTH WEST INNER (M)	W
	UP OLD SOUTH MAIN (S)	US
	DOWN OLD SOUTH MAIN (S)	WI
SOUTH WEST INNER (S)	DS	

SIGNAL	DESTINATION	INDICATION
GE 406	UP SUBURBAN (M)	-
	UP SUBURBAN (S)	US
	DOWN SUBURBAN (S)	DS

SIGNAL	DESTINATION	INDICATION
GE 412	UP MAIN (M)	-
	UP SUBURBAN (M)	DS
	UP MAIN (S)	-
	UP SUBURBAN (S)	US

SIGNAL	DESTINATION	INDICATION
GE 424	UP WEST MAIN (M)	-
	DOWN WEST MAIN (M)	D
	SOUTH WEST OUTER (M)	S
	UP WEST MAIN (S)	UW
	DOWN WEST MAIN (S)	DW
SOUTH WEST OUTER (S)	SO	

SECTION : **GRANVILLE TO HARRIS PARK**
GRANVILLE TO MERRYLANDS
 MAP SET : OLD MAIN SOUTH
 PAGE : 2 OF 2
 UPDATED TO : 18 January 2021

INFORMATION

CONTROLLED FROM : GRANVILLE
 RADIO AREA CODE : 041 (GRANVILLE)

SPECIAL POINTS OF INTEREST

GRANVILLE

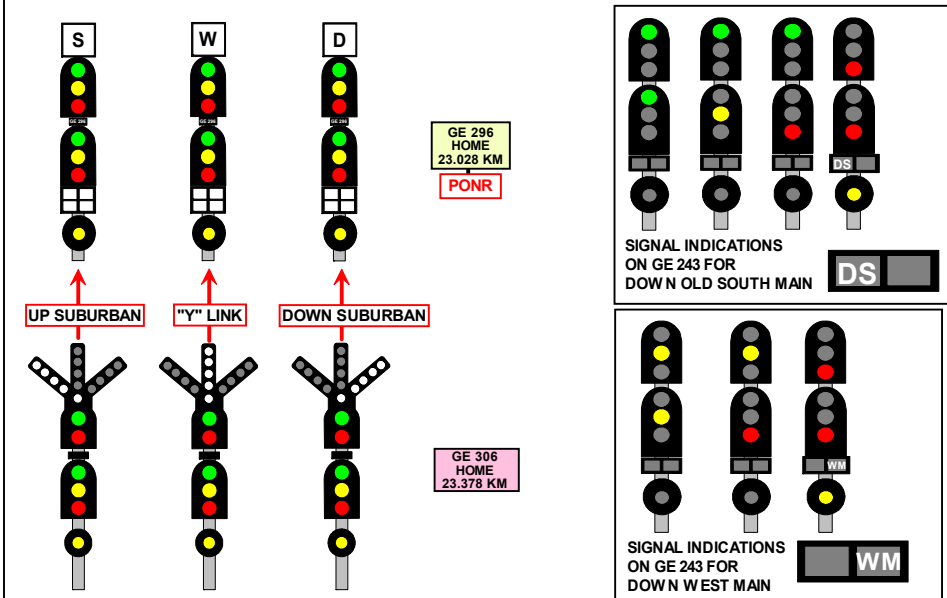
THE POINTS AND SIGNALS AT GRANVILLE, PARRAMATTA, WESTMEAD AND THE JUNCTIONS AT BOTH ENDS OF THE SOUTH WEST OUTER AND SOUTH WEST INNER LINES ARE ALL PART OF THE GRANVILLE INTERLOCKING.

THE SHUNTING NECK IS APPROXIMATELY 260 METRES LONG AND HOLDS AROUND 12 CARS.

GRANVILLE
 TERMINATING TRAINS (UNDER NORMAL CONDITIONS)

FROM	TERMINATE AT	THEN GO TO
DOWN MAIN TRAINS	No. 2 PLATFORM	SHUNT FORWARD THROUGH No.S 711 AND 713 POINTS CLEAR OF SIGNAL GE 410 AND THEN RETURN TO EITHER No. 3 OR No. 4 PLATFORM
	No. 4 PLATFORM	VIA 700 POINTS
UP SUBURBAN TRAINS	No. 3 PLATFORM	RETURN TO EITHER THE DOWN WEST MAIN VIA No. 710 POINTS OR THE DOWN OLD SOUTH MAIN VIA No. 750 POINTS
DOWN SUBURBAN TRAINS	No. 4 PLATFORM	SHUNT BACK IN TO DOWN DEPARTURE ROAD OR SHUNT FORWARD IN TO DOWN SHUNTING NECK OR SHUNT FORWARD CLEAR OF SIGNAL No. GE 410 AND RETURN TO No. 3 PLATFORM

LENGTHS OF ROADS (1 SUBURBAN CAR = APPROX 20.4 METRES)			
TITLE	FROM	TO	METRES
PERWAY SIDING	BUFFER STOP	GE 269	129
SHUNTING NECK	GE 270	BUFFER STOP	261
	CATCH POINTS	BUFFER STOP	79



PONR
 POINTS OF NO RETURN

SIGNAL No.	LOCATION	DESTINATIONS
GE 424	HARRIS PARK	SOUTH VIA "Y" LINK OR TOWARD GRANVILLE
GE 243	GRANVILLE	RUN TO WEST OR RUN SOUTH
GE 296	350 METRES CITY SIDE OF MERRYLANDS	RUN TO WEST VIA "Y" LINK OR RUN TO CITY VIA GRANVILLE

SECTION : MERRYLANDS TO GUILDFORD
MAP SET : OLD MAIN SOUTH LINE
UPDATED TO : 20 September 2019

INFORMATION

CONTROLLED FROM : GRANVILLE
SYDENHAM CONTROL CENTRE
RADIO AREA CODE : 041 (GRANVILLE)
055 (LIVERPOOL)

GRADIENT

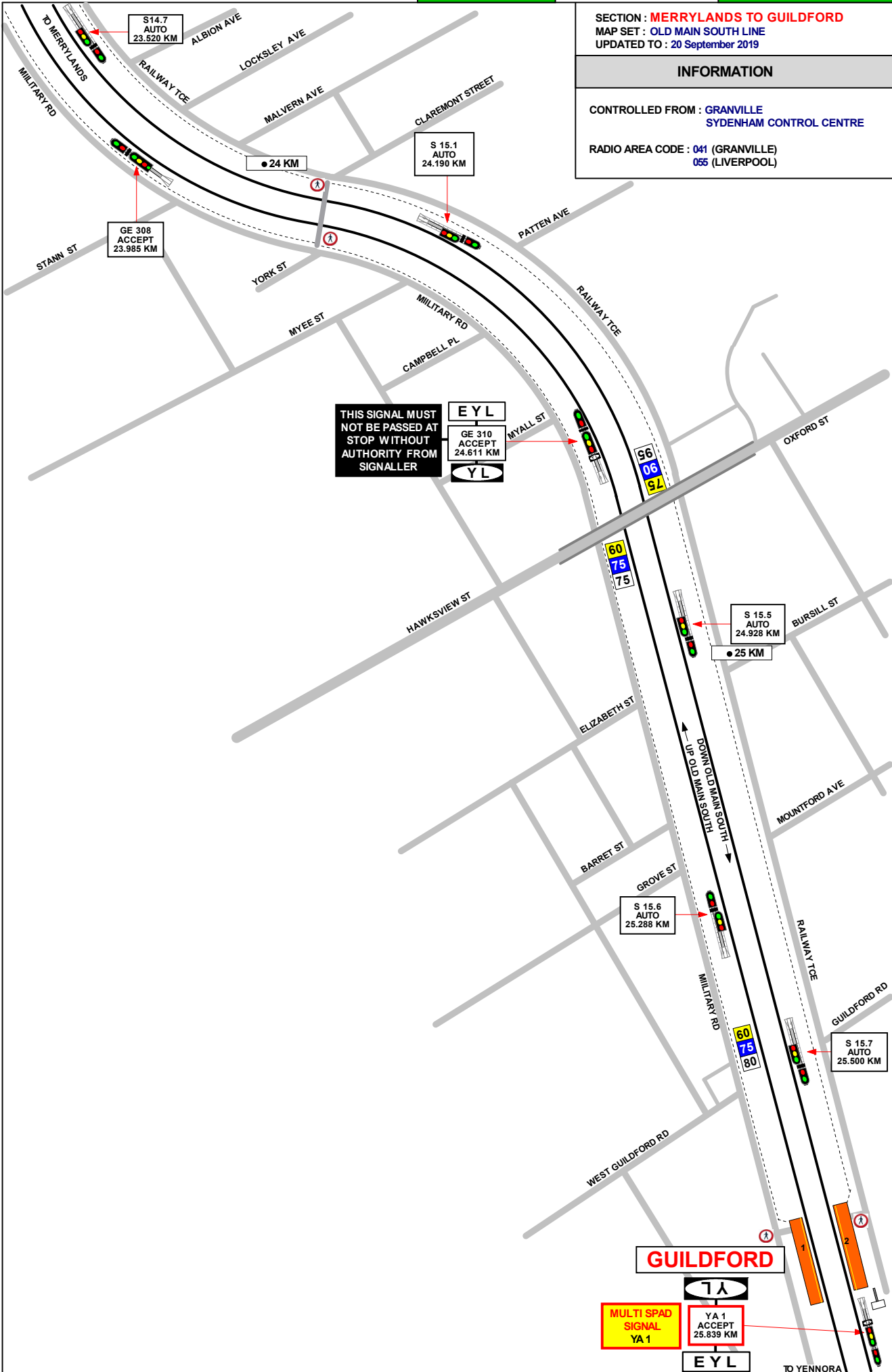
1 IN 200

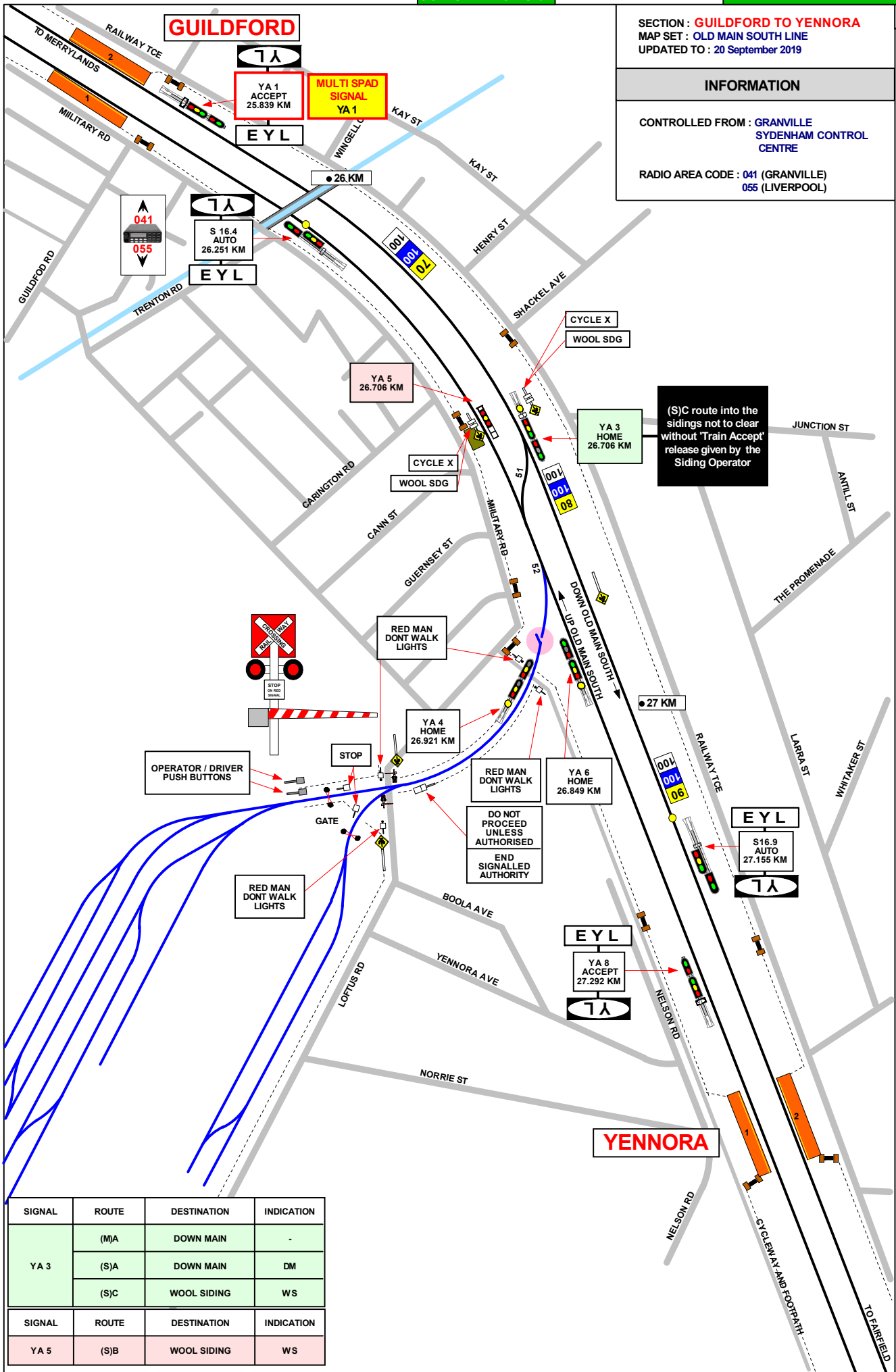
1 IN 100

1 IN 200

LEVEL

1 IN 100





SECTION : **GUILDFORD TO YENNORA**
 MAP SET : OLD MAIN SOUTH LINE
 UPDATED TO : 20 September 2019

INFORMATION

CONTROLLED FROM : GRANVILLE
 SYDENHAM CONTROL CENTRE

RADIO AREA CODE : 041 (GRANVILLE)
 055 (LIVERPOOL)

GRADIENT

1 IN 100

LEVEL

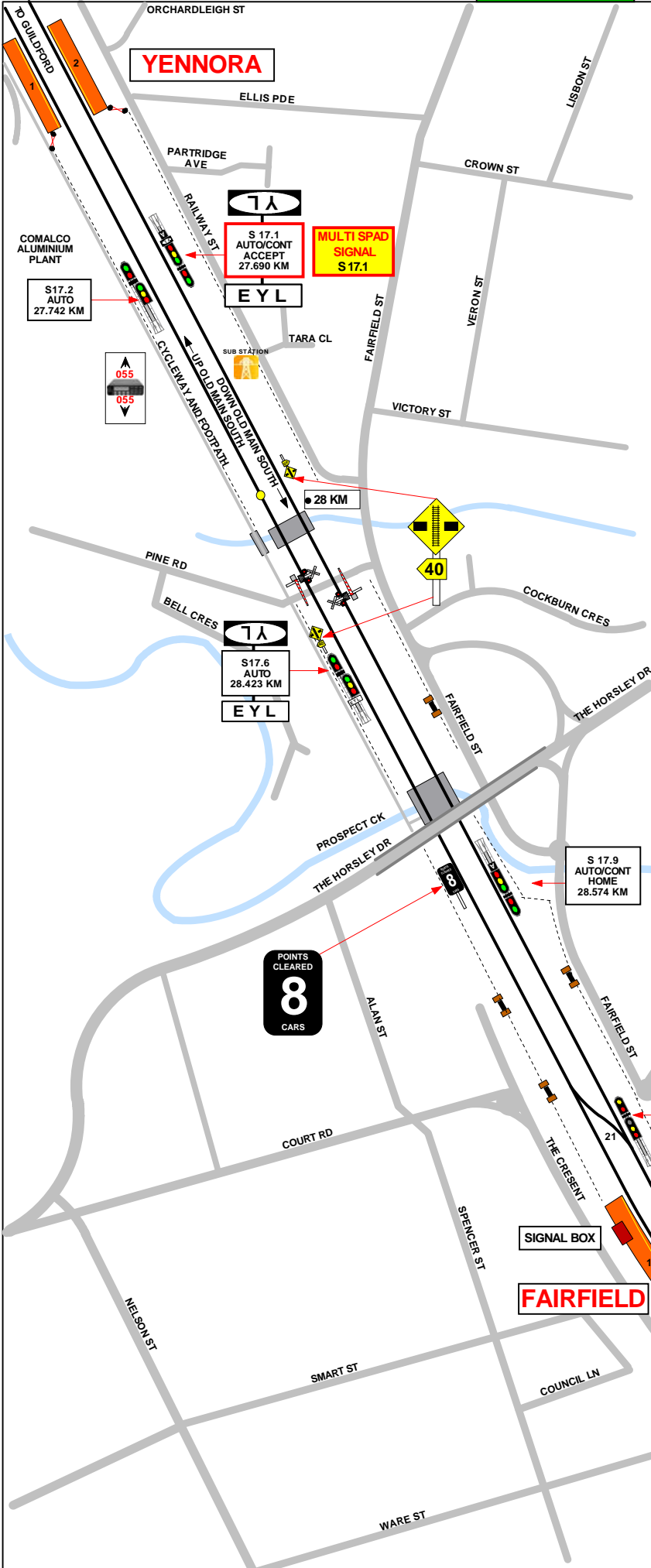
1 IN 100

1 IN 94

1 IN 100

LEVEL

SIGNAL	ROUTE	DESTINATION	INDICATION
YA 3	(M)A	DOWN MAIN	-
	(S)A	DOWN MAIN	DM
	(S)C	WOOL SIDING	WS
SIGNAL	ROUTE	DESTINATION	INDICATION
YA 5	(S)B	WOOL SIDING	WS



SECTION : **YENNORA TO FAIRFIELD**
 MAP SET : **OLD MAIN SOUTH LINE**
 UPDATED TO : 4 July 2019

GRADIENT

1 IN 100

INFORMATION

CONTROLLED FROM : **FAIRFIELD (WHEN CUT IN)**

RADIO AREA CODE : **055 (LIVERPOOL)**

SPECIAL POINTS OF INTEREST
YENNORA

PINE RD LEVEL CROSSING IS LOCATED AT APPROXIMATELY 28.200 KM.

FAIRFIELD

FAIRFIELD MAY BE CUT IN FOR TERMINATING TRAINS OR AS REQUIRED IN THIS CASE THE SIGNALLER CONTROL OVER ALL OF THE SEMI AUTOMATIC SIGNALS AS WELL AS SIGNAL **FD 6**.

FAIRFIELD-POINTS REQUIRING CLIPPING FOR FACING MOVEMENTS .

THE POINTS NEED TO BE CLIPPED FOR FACING MOVES DUE TO NOT BEING PROVIDED WITH AN FPL (FACING POINT LOCK)

THE FACING MOVEMENTS THROUGH 21 A POINTS DO NOT HAVE A SIGNAL PROVIDED .
 THE REQUIREMENT APPLIES TO BOTH THE NORMAL AND REVERSE POSITIONS.

FAIRFIELD

TERMINATING TRAINS (UNDER NORMAL CONDITIONS)

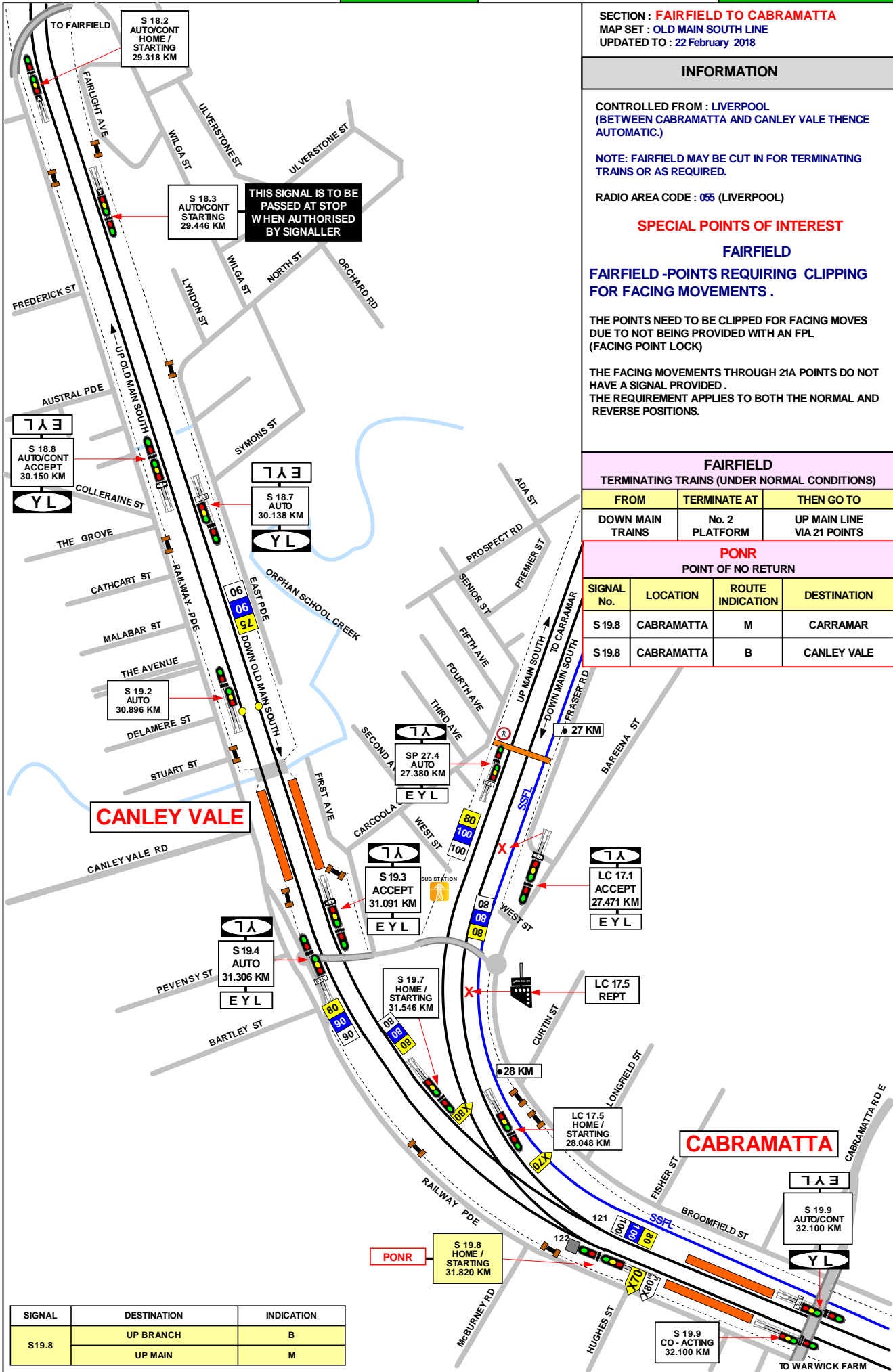
FROM	TERMINATE AT	THEN GO TO
DOWN MAIN TRAINS	No. 2 PLATFORM	UP MAIN LINE VIA 21 POINTS

LEVEL

1 IN 100

1 IN 122

LEVEL



SECTION : **FAIRFIELD TO CABRAMATTA**
 MAP SET : OLD MAIN SOUTH LINE
 UPDATED TO : 22 February 2018

GRADIENT

INFORMATION

CONTROLLED FROM : LIVERPOOL
 (BETWEEN CABRAMATTA AND CANLEY VALE THENCE AUTOMATIC.)

NOTE: FAIRFIELD MAY BE CUT IN FOR TERMINATING TRAINS OR AS REQUIRED.

RADIO AREA CODE : 055 (LIVERPOOL)

SPECIAL POINTS OF INTEREST

FAIRFIELD

FAIRFIELD-POINTS REQUIRING CLIPPING FOR FACING MOVEMENTS .

THE POINTS NEED TO BE CLIPPED FOR FACING MOVES DUE TO NOT BEING PROVIDED WITH AN FPL (FACING POINT LOCK)

THE FACING MOVEMENTS THROUGH 21A POINTS DO NOT HAVE A SIGNAL PROVIDED .
 THE REQUIREMENT APPLIES TO BOTH THE NORMAL AND REVERSE POSITIONS.

FAIRFIELD

TERMINATING TRAINS (UNDER NORMAL CONDITIONS)

FROM	TERMINATE AT	THEN GO TO
DOWN MAIN TRAINS	No. 2 PLATFORM	UP MAIN LINE VIA 21 POINTS

PONR

POINT OF NO RETURN

SIGNAL No.	LOCATION	ROUTE INDICATION	DESTINATION
S 19.8	CABRAMATTA	M	CARRAMAR
S 19.8	CABRAMATTA	B	CANLEY VALE

CANLEY VALE

CABRAMATTA

SIGNAL	DESTINATION	INDICATION
S19.8	UP BRANCH	B
	UP MAIN	M

LEVEL

1 IN 254

LEVEL

1 IN 100

LEVEL

1 IN 100