

DOCUMENT NO.	D2020/8566
WORK DESCRIPTION	Clyde Heavy Plant and Resurfacing Depot routine operations
WPP Number	CW2A CHP14023
SCOPE:	<p>This SWI is only applicable for the worksite protection arrangements of the routine operations performed by the Heavy Plant and Resurfacing Depot team.</p> <p>Work activities include:</p> <ul style="list-style-type: none"> • Track machine maintenance, refuelling and modifications • Track inspections • Facilities maintenance
AUTHORISATIONS:	<p>Protection Officer: Protection Officer Level 1 or higher, local Rail Safety Coach induction.</p> <p>All workers: Heavy Plant and Resurfacing Depot Induction.</p>
SAFETY CONTROLS – NWT 300 – Working in Maintenance Centres and stabling yards	<p>The limits of the worksite are from:</p> <ul style="list-style-type: none"> • 57 points to the end of terminal line on all roads excluding Manildra Group Siding. <p>The following points are clipped and locked to prevent rail traffic access to the worksite and allow movements to and from Manildra Group:</p> <ul style="list-style-type: none"> • 57 points • 58 points • 59 points <p>A Track Warning System is used to warn workers when rail traffic within the worksite is moving or when authorised rail traffic enters the worksite.</p>
PRESTART REQUIREMENTS:	<p>Protection Officer assessment checklist must be completed before instructions in this SWI are followed.</p> <p>Tools and equipment required:</p> <ul style="list-style-type: none"> • Protection Officer requires a phone to contact the Signaller. • Qualified Workers clipping and locking points require 3 sets of conventional point clips and SL locks.
FURTHER INFORMATION:	<p><i>NWT 300 Planning work in the Rail Corridor</i></p> <p><i>NGE 200 Walking in the Danger Zone</i></p> <p><i>NPR 707 Clipping points</i></p> <p><i>NPR 745 Using non-interlocked points</i></p> <p><i>NPR 712 Protecting work from rail traffic on adjacent lines</i></p> <p><i>NLA 204 Clyde Up Yard</i></p> <p><i>Heavy Plant and Resurfacing Depot Site Incident Management Plan</i></p> <p><i>HPRS Protection Officer Induction Handbook</i></p> <p><i>Safety Interface Plan for Clyde Up Yard</i></p> <p><i>Safety Interface Agreement Clyde – Pacific National</i></p> <p><i>Safety Interface Agreement Clyde – Manildra Flour Mills Pty Ltd</i></p> <p><i>Safety Interface Agreement Clyde – Boral Cement Ltd</i></p> <p><i>D2013/80868 Track Warning System Heavy Plant Clyde Yard</i></p>

Protection Officer assessment checklist

Protection Officer's name:		Yes <i>(Tick if Yes)</i>
This document has not expired 12 months beyond the issue date.		
On-site safety assessment has been completed and additional hazards and controls recorded on the pre-work briefing (Page 3).		
SWI details and protection arrangements have been reviewed and validated for the assessed worksite location.		
Corridor Safety Number	Protection Officer Signature	Date

Warning



If an above item does not apply, the Protection Officer must not use this Safe Work Instruction. A new worksite protection plan must be completed in accordance with NRF 014 Worksite Protection Pre-work briefing and NRF 015 Worksite Protection Plan.

Safe Work Instruction

Worksite Protection for work in Clyde Heavy Plant and Resurfacing Depot



Worksite Protection Pre-work Briefing

Briefing date:

Protection Officer details

Work location:

Scope of work:

Worksite protection: Refer to Worksite Protection Plan for details

Hazards (e.g. Site specific hazards identified, including physical environment, human errors, plant and equipment)	Controls (to be implemented to eliminate or reduce the risk to the lowest practicable level)	Person responsible for Control
Rail traffic approach	Rail traffic excluded from the worksite by clipping and locking 57, 58 and 59 points to exclude unauthorised rail traffic from the worksite Manildra Group Siding is live. Manildra Group flashing lights and closed gates for planned movements. Qualified Workers must maintain vigilance for rail traffic when crossing the line.	Protection Officer
Struck by rail traffic within the worksite	Protection Officer informed of rail traffic movements within the worksite. Track Warning System must be activated before rail traffic movements within the worksite are made.	Protection Officer
Adjacent live lines	Manildra Group siding is to be treated as live and bidirectional. Designated work and walk areas as per Protection Officer's instructions.	Protection Officer
Work road vehicles	Work road vehicles limited to 10km/h in the worksite. Designated work and walk areas for workers and vehicles	All
Forklift operations	Forklift vehicles limited to 5km/h in the worksite. Designated work and walk areas for workers and vehicles	All
Electrical infrastructure	Electrical infrastructure is to be treated as live and workers must maintain a safe approach distance as instructed by the Protection Officer or Workplace Supervisor.	Protection Officer and Workplace Supervisor
Mobile device distraction	Mobile devices not associated with the work must not be used in the Danger Zone. Mobile devices associated with the work must be only used in a safe place.	All

Safe Work Instruction

Worksite Protection for work in Clyde Heavy Plant and Resurfacing Depot



Worksite Protection Plan – Work within a Maintenance Centre or stabling yard

Pacific National Coordinator details

<input type="text" value="name"/>	Pacific National Clyde Depot	0404048622
-----------------------------------	-------------------------------------	-------------------

Protection Officer details

<input type="text" value="name"/>	<input type="text" value="signature"/>	<input type="text" value="contact No."/>
<input type="text" value="RSW or RIW No."/>	<input type="text" value="designation"/>	Planned duration <input type="text"/>

Workplace Supervisor details:

Type of work: **Heavy Plant and Resurfacing Depot routine operations**

Worksite Location

On the

and

On the

and

On the

and

The following are diagrams, notes, and detailed instructions. These are to be read and followed as part of this worksite protection plan for Clyde Heavy Plant.

INSTRUCTIONS:	<ol style="list-style-type: none"> 1. Protection Officer contacts the Pacific National Coordinator on duty Clyde Up Yard. 2. Protection Officer obtains permission to clip and lock 57, 58 and 59 points to exclude rail traffic from the worksite. 3. Instruct Qualified Workers to clip and lock 57, 58 and 59 points to exclude rail traffic from the worksite. 4. Protection Officer sets up the STOP markers with their contact details in place at the worksite limits. 5. Protection Officer conducts the worksite protection pre-work briefing. 6. Inform the workplace supervisor that it is safe for work to start. 7. After all work is completed, move all workers and equipment into a safe place. 8. Instruct Qualified Workers to remove the point clips from 57, 58 and 59 points and reset the STOP markers. 9. Protection Officer informs the Pacific National Coordinator on duty Clyde Up Yard that work is complete, point clips removed, that workers and equipment are clear of the Danger Zone and if any restrictions are applied.
ADDITIONAL DETAILS	<p>Manildra Group Siding is treated as live. Workers must watch for rail traffic movements before crossing the siding to access and exit the worksite. Manildra Group may also close Gate 11 and activate flashing lights when conducting rail movements.</p> <p>Rail traffic movements within the worksite must be authorised by the Protection Officer. Qualified Workers must activate the Track Warning System before rail traffic movements are made.</p> <p>All points in the worksite are manually operated. Qualified Workers must make sure the switches are clear before operating the points.</p>

PROTECTION

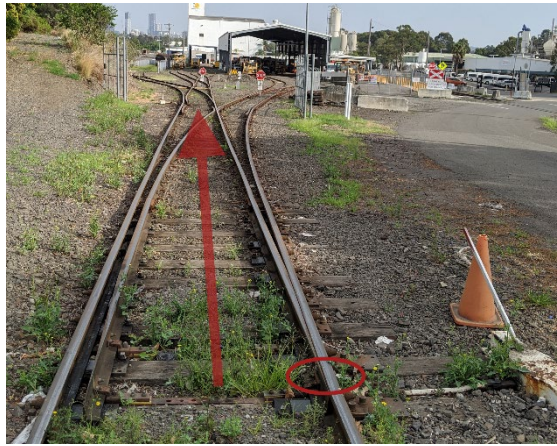


Image 1: 57 points clipped and locked



Image 2: 58 points clipped and locked



Image 3: 59 points clipped and locked

EMERGENCY ASSEMBLY POINTS

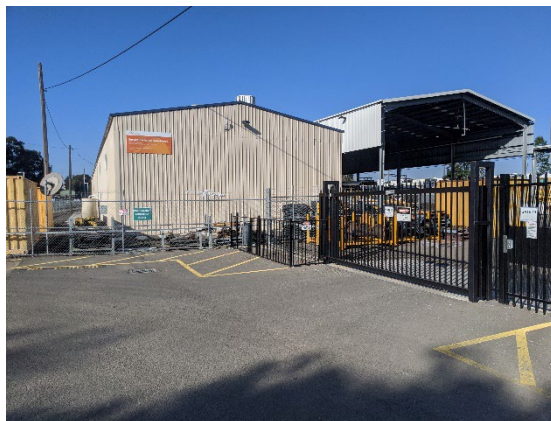


Image 4: Gate 17 Emergency Assembly Point



Image 5: Gate 11 Emergency Assembly Point

TRACK WARNING SYSTEM



Image 6: Track Warning System back



Image 7: Track Warning System front opened

MANILDA GROUP SIDING ACCESS



Image 8: Gate 17 closed with flashing lights when rail traffic movements are made

Diagram

