

DOCUMENT NO.	D2022/2787
WORK DESCRIPTION	Routine network maintenance activities – Central to Waverton (lookout working)
WPP Number	CE7B 10029
SCOPE:	<p>This SWI is applicable for the worksite protection arrangements using lookout working concerning routine network maintenance, defect management and repair of assets within the limits specified below and in the attached plan.</p> <p>Work activities include:</p> <ul style="list-style-type: none"> • Routine preventative and corrective work such as inspections and maintenance as appropriate for the type of protection being applied as part of this plan.
AUTHORISATIONS:	<p>Protection Officer: Protection Officer Level 1 or higher</p> <p>Lookout: Handsignaller Level 1 or higher and/or Protection Officer Level 1 or higher.</p>
SAFETY CONTROLS – Lookout Working arrangements:	<p>The nominated worksite location for Lookout Working includes the Up and Down North Shore lines, No.2 and No.3 Tunnel Roads from Central Station through to Waverton Station and looping back to Central Station.</p> <p>As the work moves along the track, the Protection Officer must assess the new location and:</p> <ul style="list-style-type: none"> • Establish Lookouts as required to watch for approaching rail traffic from all entry points • Establish Lookouts using Warning Lights within tunnel limits between Goulburn St and Argyle St • Designate and instruct which safe places the workers are to use as the work is completed along the work route within the worksite limits.
PRESTART REQUIREMENTS:	<p>Protection Officer Assessment checklist must be completed before instructions in this SWI are followed.</p> <p>Tools and equipment required:</p> <ul style="list-style-type: none"> • Protection Officer requires a phone to contact the Signaller. • Lookouts require a high-visibility arm sleeve and a whistle / horn.
FURTHER INFORMATION:	<p><i>NWT 300 Planning work in the Rail Corridor</i></p> <p><i>NWT 310 Lookout Working</i></p> <p><i>NGE 200 Walking in the Danger Zone</i></p> <p><i>NPR 711 Using Lookouts</i></p> <p><i>NPR 751 Calculating Minimum Warning Time</i></p> <p><i>NPR 712 Protecting work from rail traffic on adjacent lines</i></p> <p><i>NLA 304 Central - Hornsby</i></p> <p><i>Lookout Working Prohibited Locations Register</i></p>

Safe Work Instruction**Lookout Working Worksite Protection Plan for Central to Waverton routine network maintenance activities****Protection Officer assessment checklist**

Protection Officer's name:		Yes <i>(Tick if Yes)</i>
This document has not expired 12 months beyond the issue date.		
SWI details and protection arrangements have been reviewed and validated for the assessed worksite location, including: <ul style="list-style-type: none"> On-site safety assessment has been completed for relevancy of works being undertaken The required protection details, environment and tasks are unchanged from the details of this SWI 		
The Protection Officer and Qualified Workers deploying qualifications are current and have practiced in the last 6 months. If not practiced, then a Rail Safety Coach must be contacted for guidance.		
Corridor Safety Number	Protection Officer Signature	Date

Warning

If an above item does not apply, the Protection Officer must not use this Safe Work Instruction. A new worksite protection plan must be completed in accordance with NRF 014 Worksite Protection Pre-work briefing and NRF 015 Worksite Protection Plan.

Safe Work Instruction

Lookout Working Worksite Protection Plan for Central to Waverton routine network maintenance activities



Worksite Protection Pre-work Briefing

Briefing date: / /

Protection Officer details

name signature contact No.

Work location:

Scope of work: **Routine network maintenance activities**

Worksite protection: **Lookout Working** Refer to Worksite Protection Plan for details

Hazards (e.g. Site specific hazards identified, including physical environment, human errors, plant and equipment)	Controls (to be implemented to eliminate or reduce the risk to the lowest practicable level)	Person responsible for Control
Approaching rail traffic	Lookout Working implemented in conjunction with warning lights. Lookouts must be trained and competent to perform lookout duties. Lookouts must be rotated if performing lookout for extended periods of time Workers to remain within worksite limits as set out in this procedure. Lookouts must be placed as per the protection plan attached to this document. . Workers are to stop work and move to a safe place immediately on being warned by the lookouts	Protection Officer & Lookout
Adjacent live lines	Lookouts must provide warning to workers when rail traffic is approaching from the adjacent line in either direction.	Protection Officer & Lookout
Two-way running / multiple entry points	612 points, and No.2 and No.3 Tunnel Roads are two-way running with multiple points of entry through the crossovers. One Lookout placed watching each direction before work starts. Lookouts are to warn workers of approaching rail traffic, including rail traffic entering or travelling within the worksite. Workers are to stop work and move to a safe place.	Protection Officer & Lookout
Obstruction to Minimum Sighting Distance	Lookouts must provide warning to the workers whenever their line of sight is obstructed by passing rail traffic. Workers must stop work and move to a safe place and reassess positioning and method.	Protection Officer & Lookout
Adjoining/Surrounding Worksites	Lookouts must have two independent audible warning devices that can be heard by workers over any noise generated by adjoining/surrounding worksites. Lookouts are to provide warning if their line of sight is obstructed by adjoining/surrounding worksites.	Protection Officer & Lookout
Refuge limitations (Man holes)	Protection Officer will designate each individual's refuge safe place to move to when the Lookout provides warning.	Protection Officer

Safe Work Instruction

Lookout Working Worksite Protection Plan for Central to Waverton routine network maintenance activities



Worksite Protection Plan – Lookout Working

Signaller details

	East Panel	02 9701 1581
	North Shore Panel	02 9701 1528

Protection Officer details

name	signature	contact No.
RSW or RIW No.	designation	Planned duration

Workplace Supervisor details:

Type of work:

Worksite location

On the	Up North Shore line	Down North Shore line	No.2 Tunnel Road	No.3 Tunnel Road
between	SY 375 SH Signal	and	SH 3.77 Signal	

Worksite Assessment

Has the Lookout Working Prohibited Locations Register been consulted? Yes

Warning method

Whistle/Horn	Voice/Touch
--------------	-------------

Minimum Warning Time Calculations

Maximum track speed

Number of Lookouts used Position of Lookouts to

Number of additional Lookouts* used Position of Lookouts To

Note - Lookouts are relocated to positions within these KMs as workers move along the worksite.

2 sec	+	3 sec	+	10 sec	= Minimum Warning Time (MWT)	15 sec	60 km/h	250 metres
2 sec	+	3 sec	+	10 sec		15 sec	50 km/h	208 metres
2 sec	+	3 sec	+	10 sec		15 sec	10 km/h	42 metres
See Time (S)		Move Time (M)		Safe Time	(S+M+10 sec = MWT)	Track speed		Minimum Sighting Distance as calculated

Note – Additional MWT calculations can be recorded in the Protection Officer’s Diary.

Warning lights used do not exceed a MWT of 20 seconds Yes

Where are the safe places identified for the Lookouts and the workers?

Lookouts:

Workers:

Ensure the workers have been briefed about these work details Yes

Diagrams, notes, and detailed instructions over the next pages. These are to be read and followed as part of this worksite protection plan for Lookout Working.

INSTRUCTIONS:	<ol style="list-style-type: none"> 1. Protection Officer contacts East Panel to tell the Signaller of the use of Lookout Working between Central to Waverton on the Up and Down North Shore lines. 2. Workers enter the rail corridor via any station between Central and Waverton. 3. Protection Officer briefs workers and lookouts on protection arrangements 4. Protection Officer places Lookouts watching for rail traffic approach in both directions at the designated locations. 5. Workers start work, working up to the designated Lookouts location. 6. Workers move to designated safe places. 7. Repeats steps 4 - 6 until the work is complete. 8. Move workers into a designated safe place. 9. Move Lookouts into a safe place and egress the worksite at the designated exit location. 10. Protection Officer Ends Lookout Working by contacting East Panel to tell the Signaller that work is complete, and all workers and equipment are in a safe place.
----------------------	---

ADDITIONAL DETAILS	<p><u>Warning Lights</u> Lookouts using as Warning lights a safety measure, are only authorised to do so when work is being performed within the tunnel between Goulburn St Portal and Argyle St.</p> <p><u>Refuge limitations (man holes)</u> Man hole safe places have limited space for up to 2 persons. The Protection Officer must designate which man holes are to be used by whom when the Lookout warns of approaching rail traffic.</p> <p><u>Lookout Working Prohibited Locations</u> All tracks within platform limits between Central to Waverton are Lookout Working Prohibited Locations. There are no safe places in the platform areas. Workers must stop work and move onto the platform when the workers reach the station platforms.</p> <p>The Down Shore line line between 0.054 KM to 0.367 KM is a Lookout Working Prohibited Location due to lack of achievable MWT.</p>
---------------------------	--

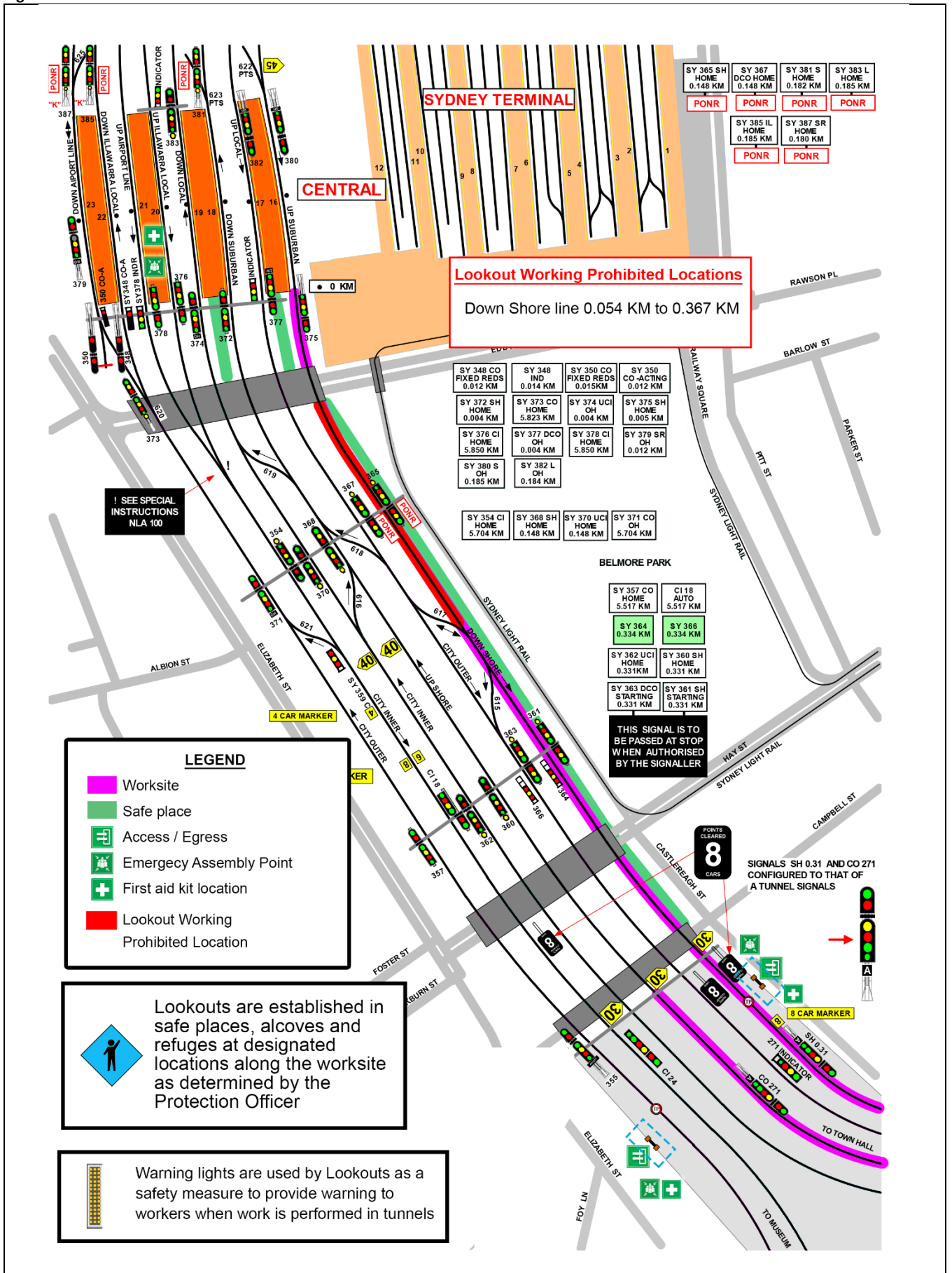
SAFE PLACES	 <p>Image 1: View of safe place on the Down Shore line from Central to Goulburn St Portal.</p>	 <p>Image 2: View of safe place on the Sydney Harbor Bridge.</p>
--------------------	--	--

Safe Work Instruction

Lookout Working Worksite Protection Plan for Central to Waverton routine network maintenance activities



Diagram



Safe Work Instruction

Lookout Working Worksite Protection Plan for Central to Waverton routine network maintenance activities



Diagram cont.

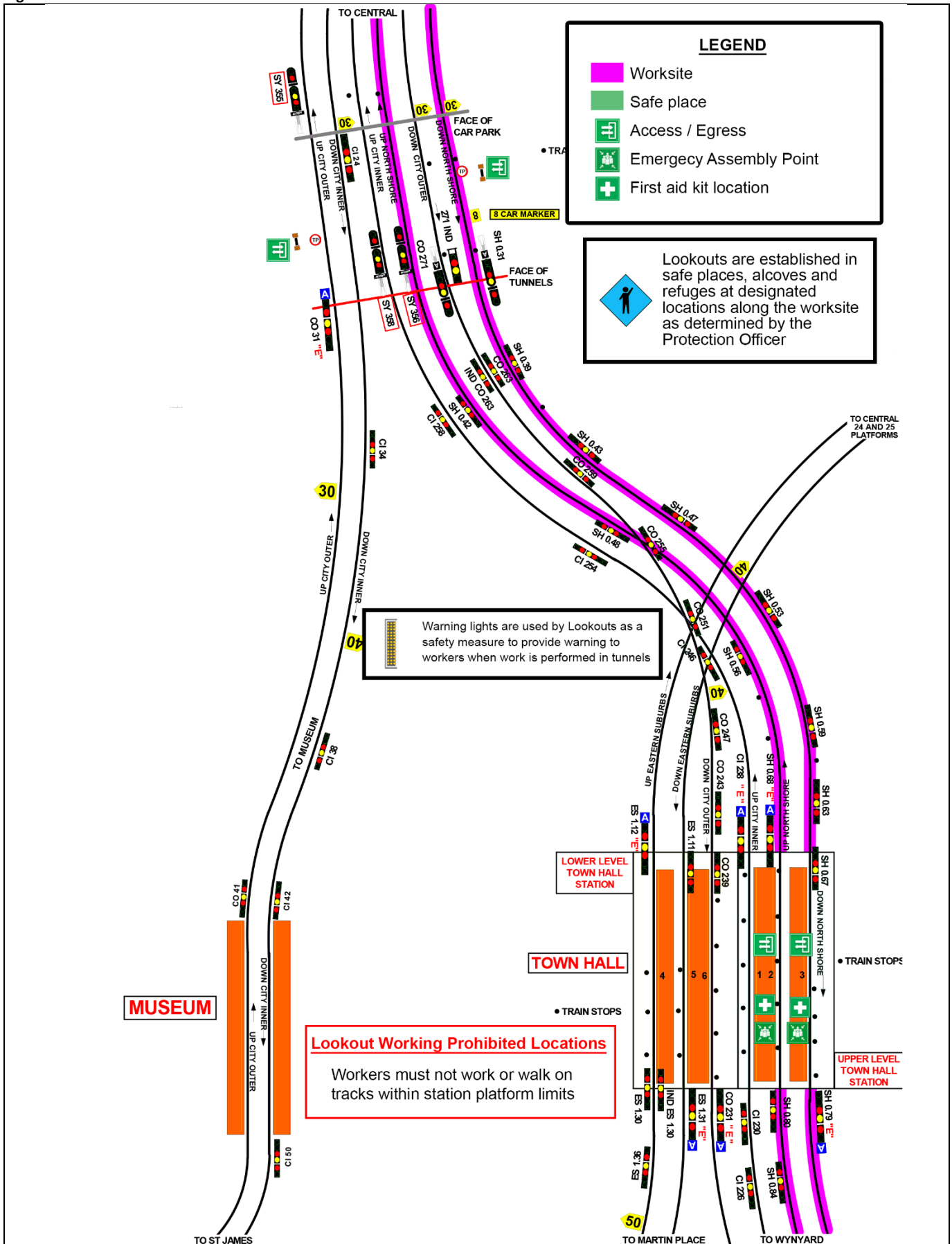
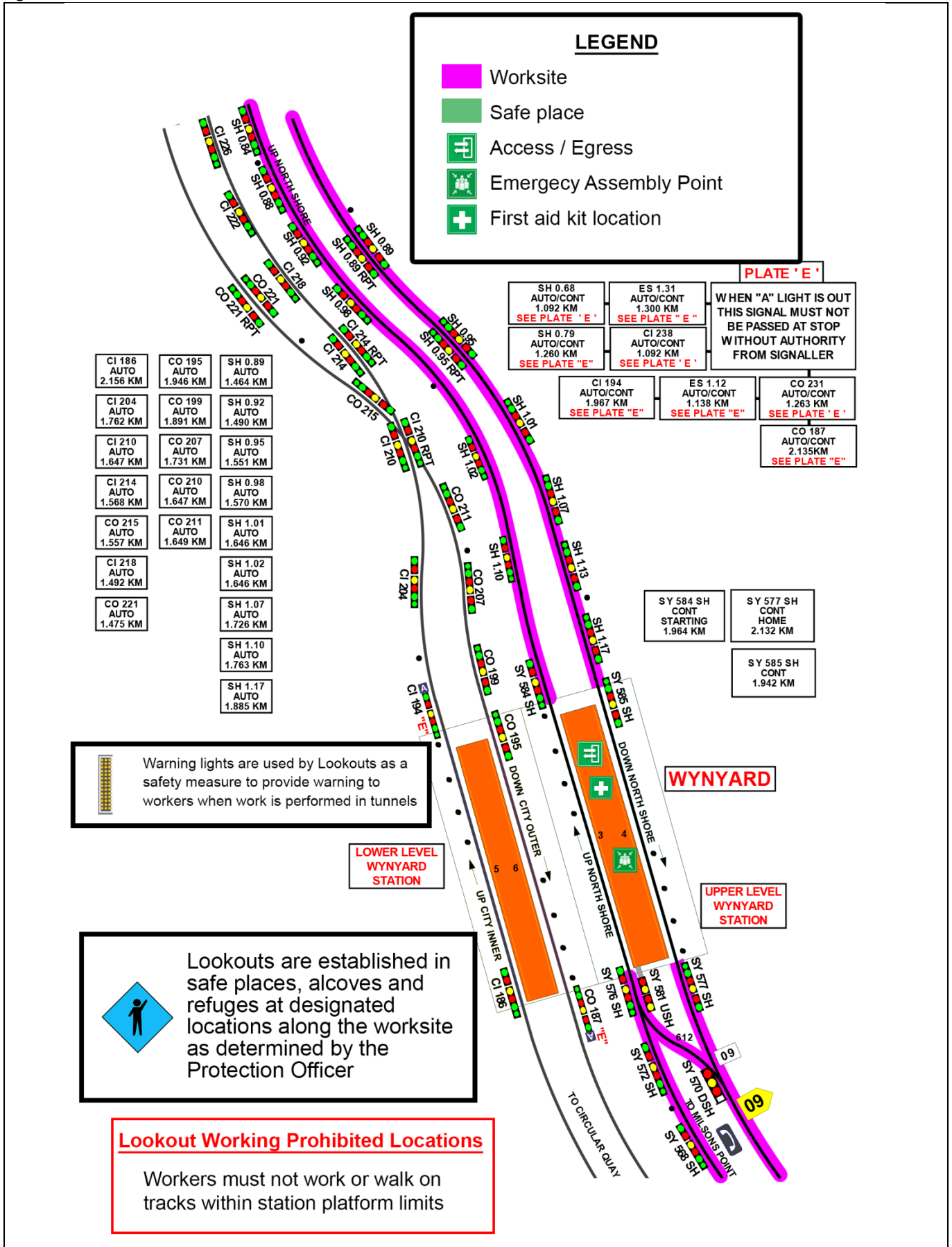


Diagram cont.



LEGEND

- Worksite
- Safe place
- + Access / Egress
- + Emergency Assembly Point
- + First aid kit location

CI 186 AUTO 2.156 KM	CO 195 AUTO 1.946 KM	SH 0.89 AUTO 1.464 KM	SH 0.68 AUTO/CONT 1.092 KM SEE PLATE "E"	ES 1.31 AUTO/CONT 1.300 KM SEE PLATE "E"	PLATE "E" WHEN "A" LIGHT IS OUT THIS SIGNAL MUST NOT BE PASSED AT STOP WITHOUT AUTHORITY FROM SIGNALLER
CI 204 AUTO 1.762 KM	CO 199 AUTO 1.891 KM	SH 0.92 AUTO 1.490 KM	SH 0.79 AUTO/CONT 1.260 KM SEE PLATE "E"	CI 238 AUTO/CONT 1.092 KM SEE PLATE "E"	
CI 210 AUTO 1.647 KM	CO 207 AUTO 1.731 KM	SH 0.95 AUTO 1.551 KM	CI 194 AUTO/CONT 1.967 KM SEE PLATE "E"	ES 1.12 AUTO/CONT 1.138 KM SEE PLATE "E"	CO 231 AUTO/CONT 1.263 KM SEE PLATE "E"
CI 214 AUTO 1.568 KM	CO 210 AUTO 1.647 KM	SH 0.98 AUTO 1.570 KM	CO 187 AUTO/CONT 2.135 KM SEE PLATE "E"		
CO 215 AUTO 1.557 KM	CO 211 AUTO 1.649 KM	SH 1.01 AUTO 1.646 KM			
CI 218 AUTO 1.492 KM		SH 1.02 AUTO 1.646 KM			
CO 221 AUTO 1.475 KM		SH 1.07 AUTO 1.726 KM			
		SH 1.10 AUTO 1.763 KM			
		SH 1.17 AUTO 1.885 KM			

Warning lights are used by Lookouts as a safety measure to provide warning to workers when work is performed in tunnels

LOWER LEVEL WYNYARD STATION

WYNYARD

UPPER LEVEL WYNYARD STATION

Lookouts are established in safe places, alcoves and refuges at designated locations along the worksite as determined by the Protection Officer

Lookout Working Prohibited Locations

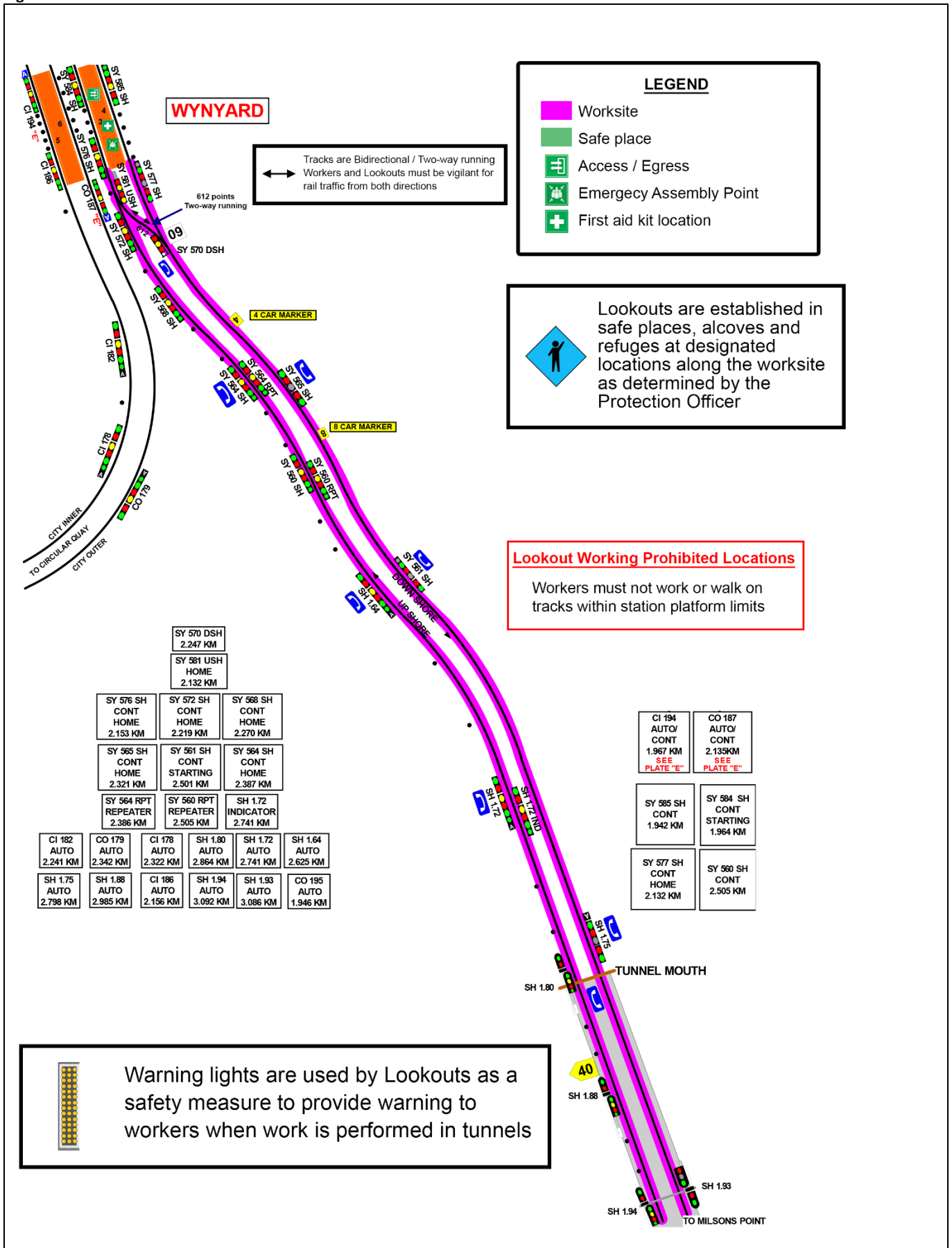
Workers must not work or walk on tracks within station platform limits

Safe Work Instruction

Lookout Working Worksite Protection Plan for Central to Waverton routine network maintenance activities



Diagram cont.

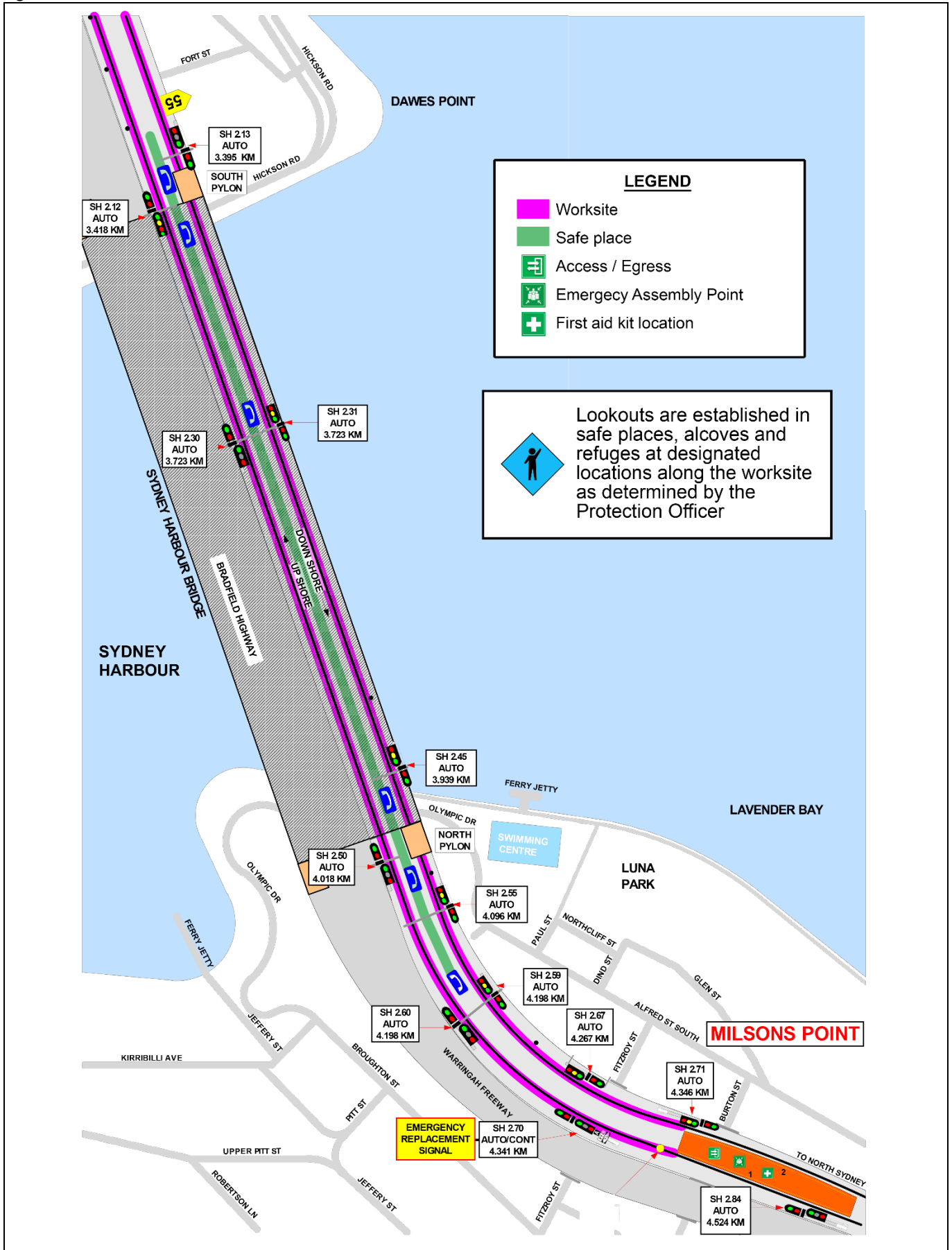


Safe Work Instruction

Lookout Working Worksite Protection Plan for Central to Waverton routine network maintenance activities



Diagram cont.

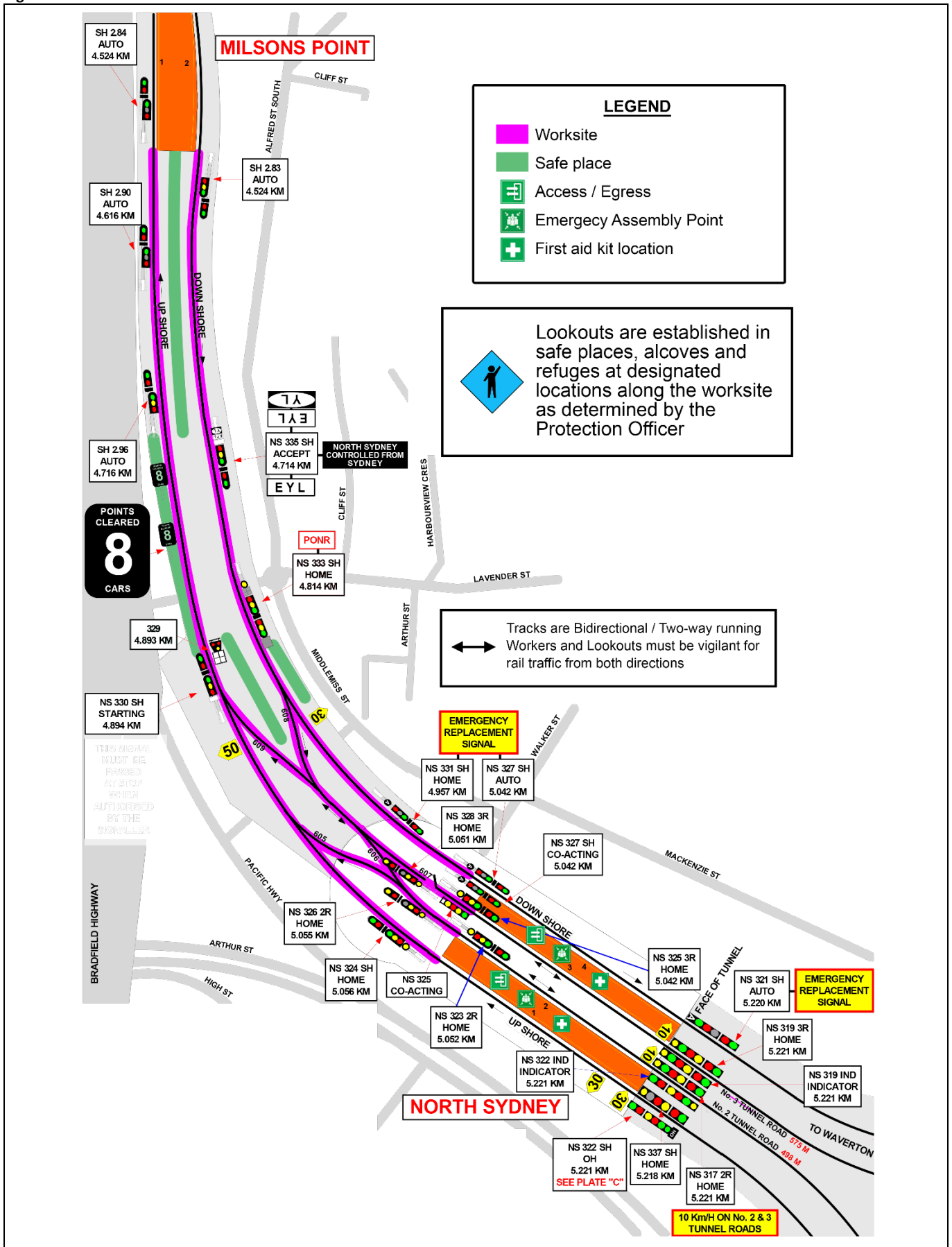


Safe Work Instruction

Lookout Working Worksite Protection Plan for Central to Waverton routine network maintenance activities



Diagram cont.



Safe Work Instruction

Lookout Working Worksite Protection Plan for Central to Waverton routine network maintenance activities



Diagram cont.

