

# DRIVERS ROUTE KNOWLEDGE DIAGRAMS

## RICHMOND LINE

SEVEN HILLS

BLACKTOWN

MARAYONG

QUAKERS HILL

SCHOFIELDS

RIVERSTONE

VINEYARD

MULGRAVE

WINDSOR

CLARENDON

EAST RICHMOND

RICHMOND

**Effective Date:** April 2024

**Version:** 4.36

### Explanatory Notes:

Navigate to your area of interest via the station index or by using links created in Adobe bookmarks.

This document is approved for **route knowledge only**.

**Do not use these diagrams for any safety related purpose** without validating the information against a controlled source or in the field.

Information in these diagrams is uncontrolled.

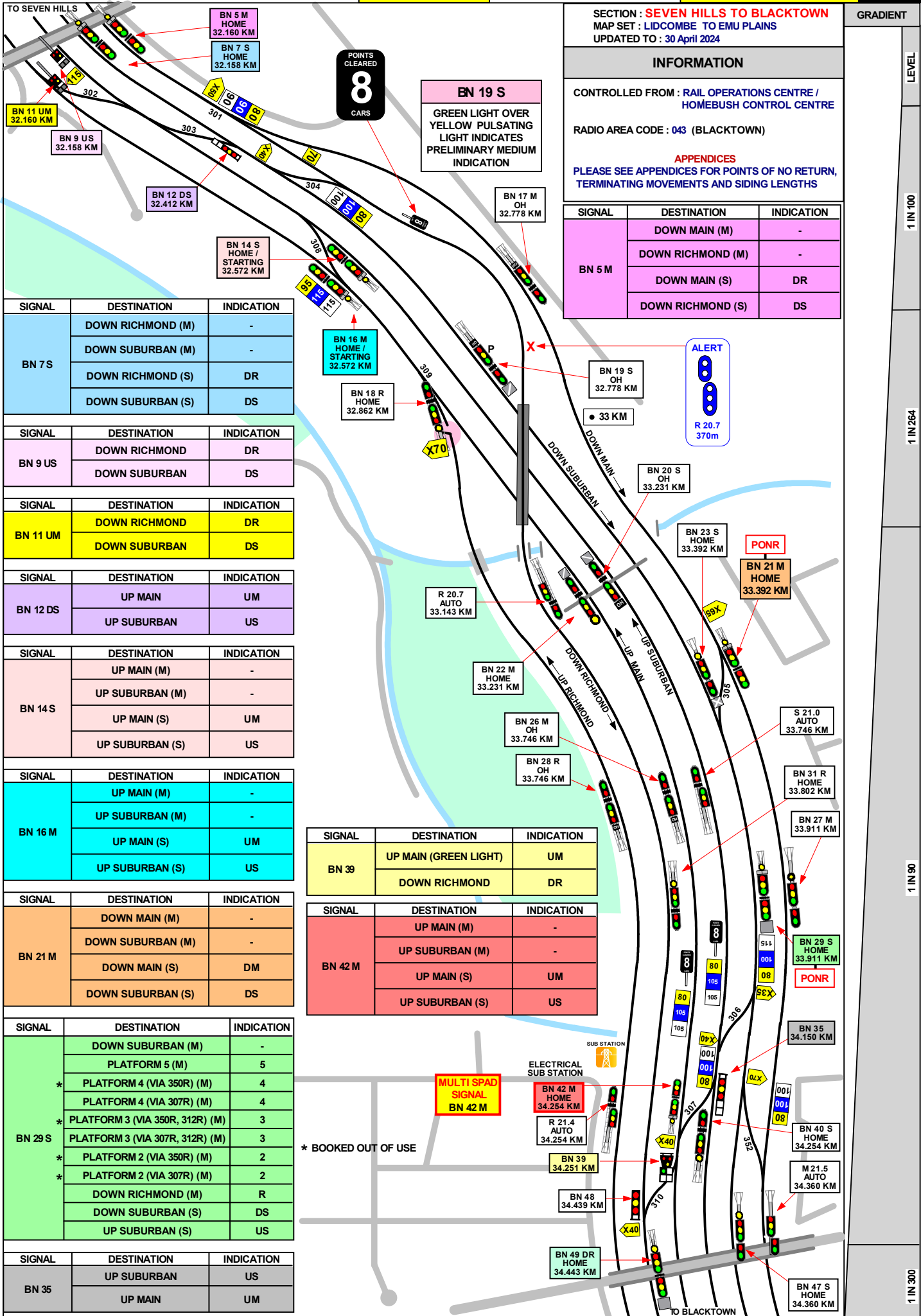
Please report any updates to  
[gjs.support@transport.nsw.gov.au](mailto:gjs.support@transport.nsw.gov.au)



**Copyright:** Sydney Trains

**Ownership:** Geospatial Services

**Location:** CM Record No.D2015/564



SECTION : **SEVEN HILLS TO BLACKTOWN**  
 MAP SET : LIDCOMBE TO EMU PLAINS  
 UPDATED TO : 30 April 2024

GRADIENT

**INFORMATION**

CONTROLLED FROM : RAIL OPERATIONS CENTRE /  
 HOMEBUSH CONTROL CENTRE

RADIO AREA CODE : 043 (BLACKTOWN)

**APPENDICES**  
 PLEASE SEE APPENDICES FOR POINTS OF NO RETURN,  
 TERMINATING MOVEMENTS AND SIDING LENGTHS

SIGNAL	DESTINATION	INDICATION
BN 5 M	DOWN MAIN (M)	-
	DOWN RICHMOND (M)	-
	DOWN MAIN (S)	DR
	DOWN RICHMOND (S)	DS

SIGNAL	DESTINATION	INDICATION
BN 7 S	DOWN RICHMOND (M)	-
	DOWN SUBURBAN (M)	-
	DOWN RICHMOND (S)	DR
	DOWN SUBURBAN (S)	DS

SIGNAL	DESTINATION	INDICATION
BN 9 US	DOWN RICHMOND	DR
	DOWN SUBURBAN	DS

SIGNAL	DESTINATION	INDICATION
BN 11 UM	DOWN RICHMOND	DR
	DOWN SUBURBAN	DS

SIGNAL	DESTINATION	INDICATION
BN 12 DS	UP MAIN	UM
	UP SUBURBAN	US

SIGNAL	DESTINATION	INDICATION
BN 14 S	UP MAIN (M)	-
	UP SUBURBAN (M)	-
	UP MAIN (S)	UM
	UP SUBURBAN (S)	US

SIGNAL	DESTINATION	INDICATION
BN 16 M	UP MAIN (M)	-
	UP SUBURBAN (M)	-
	UP MAIN (S)	UM
	UP SUBURBAN (S)	US

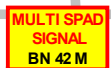
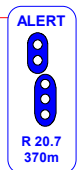
SIGNAL	DESTINATION	INDICATION
BN 39	UP MAIN (GREEN LIGHT)	UM
	DOWN RICHMOND	DR

SIGNAL	DESTINATION	INDICATION
BN 42 M	UP MAIN (M)	-
	UP SUBURBAN (M)	-
	UP MAIN (S)	UM
	UP SUBURBAN (S)	US

SIGNAL	DESTINATION	INDICATION
BN 21 M	DOWN MAIN (M)	-
	DOWN SUBURBAN (M)	-
	DOWN MAIN (S)	DM
	DOWN SUBURBAN (S)	DS

SIGNAL	DESTINATION	INDICATION
BN 29 S	DOWN SUBURBAN (M)	-
	PLATFORM 5 (M)	5
	PLATFORM 4 (VIA 350R) (M)	4
	PLATFORM 4 (VIA 307R) (M)	4
	PLATFORM 3 (VIA 350R, 312R) (M)	3
	PLATFORM 3 (VIA 307R, 312R) (M)	3
	PLATFORM 2 (VIA 350R) (M)	2
	PLATFORM 2 (VIA 307R) (M)	2
	DOWN RICHMOND (M)	R
DOWN SUBURBAN (S)	DS	
UP SUBURBAN (S)	US	

SIGNAL	DESTINATION	INDICATION
BN 35	UP SUBURBAN	US
	UP MAIN	UM



\* BOOKED OUT OF USE

LEVEL

1 IN 100

1 IN 264

1 IN 90

1 IN 300

SECTION : BLACKTOWN  
MAP SET : SEVEN HILLS TO RICHMOND  
PAGE 1 OF 2  
UPDATED TO : 29 April 2024

INFORMATION

CONTROLLED FROM : RAIL OPERATIONS CENTRE /  
HOMEBUSH CONTROL CENTRE

RADIO AREA CODE : 043 (BLACKTOWN)

APPENDICES  
PLEASE SEE APPENDICES FOR POINTS OF NO RETURN,  
TERMINATING MOVEMENTS AND SIDING LENGTHS

BN 96 M

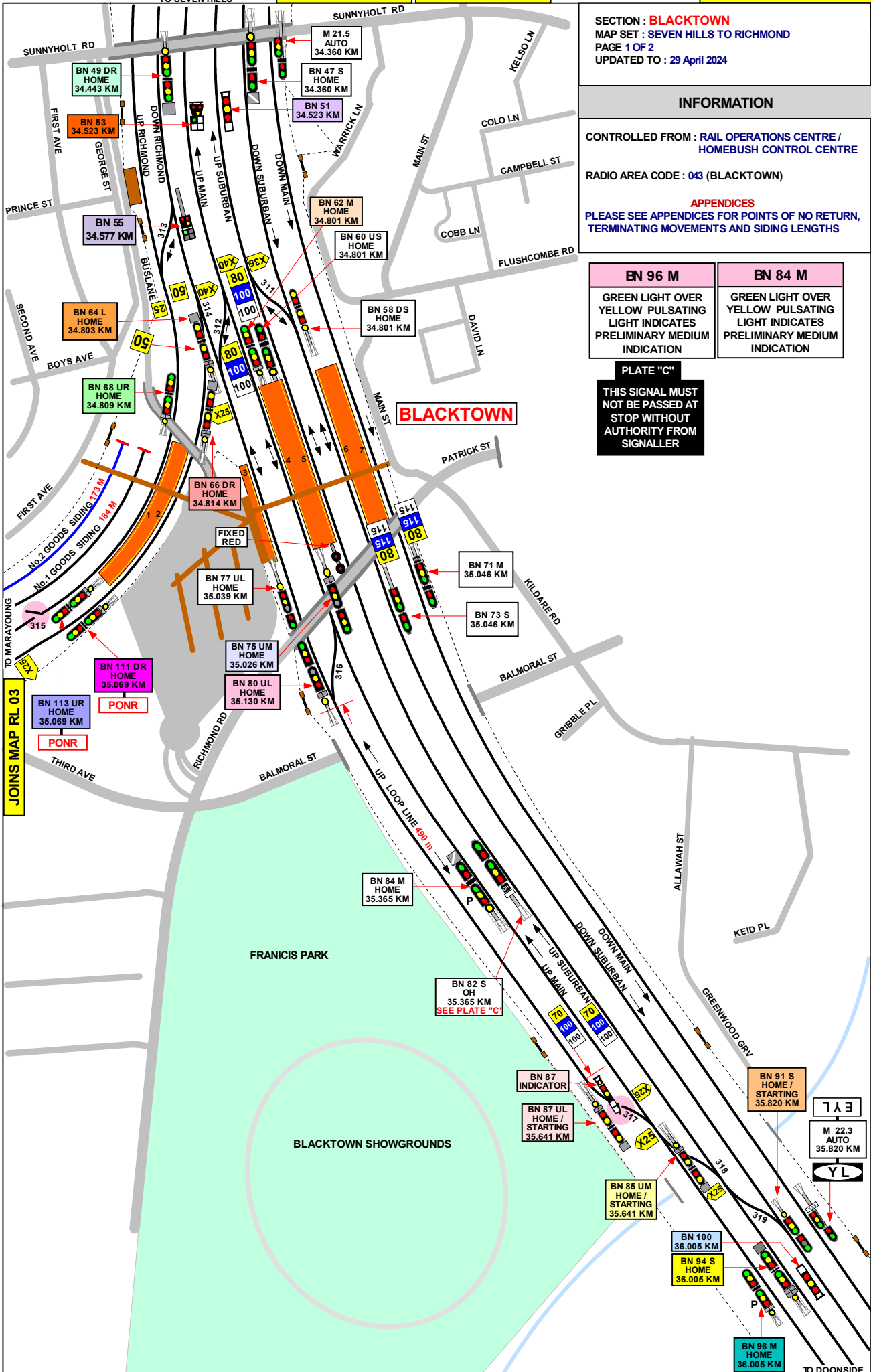
GREEN LIGHT OVER  
YELLOW PULSATING  
LIGHT INDICATES  
PRELIMINARY MEDIUM  
INDICATION

BN 84 M

GREEN LIGHT OVER  
YELLOW PULSATING  
LIGHT INDICATES  
PRELIMINARY MEDIUM  
INDICATION

PLATE "C"

THIS SIGNAL MUST  
NOT BE PASSED AT  
STOP WITHOUT  
AUTHORITY FROM  
SIGNALLER



JOINS MAP RL 03

JOINS MAP MW 14

1 IN 90

1 IN 300

1 IN 100

1 IN 100

SIGNAL	DESTINATION	INDICATION
BN 49 DR	PLATFORM 3 (M)	-
	PLATFORM 2 (M)	2
	PLATFORM 1 (M)	1
	DOWN RICHMOND (S)	-

SIGNAL	DESTINATION	INDICATION
BN 51 *	PLATFORM 6	6
	PLATFORM 5	5
	PLATFORM 4	4
	* PLATFORM 3 (VIA 312R)	3
	* PLATFORM 2	2

SIGNAL	DESTINATION	INDICATION
BN 53	PLATFORM 4 (GREEN LT)	4
	PLATFORM 3 (VIA 312 R)	3
	* PLATFORM 2	2

SIGNAL	DESTINATION	INDICATION
BN 55	PLATFORM 3 (GREEN LT)	3
	PLATFORM 2	2
	PLATFORM 1	1

SIGNAL	DESTINATION	INDICATION
BN 62 M	UP MAIN (M)	-
	* UP SUBURBAN (M)	-
	UP MAIN (S)	UM
	* UP SUBURBAN (S)	US

SIGNAL	DESTINATION	INDICATION
BN 64 L	UP MAIN (M) (VIA 310 R)	M
	UP MAIN (M) (VIA 312 R)	M
	* UP SUBURBAN (M) (VIA 312 R)	S
	DOWN RICHMOND (S)	DR
	UP MAIN (S) (VIA 312 R)	UM
	* UP SUBURBAN (S) (VIA 312 R)	US

SIGNAL	DESTINATION	INDICATION
BN 66 DR	UP MAIN (VIA 310R) (M)	M
	* UP MAIN (VIA 351R) (M)	M
	* UP SUBURBAN (M)	S
	DOWN RICHMOND (S)	DR
	* UP MAIN (S)	UM
	* UP SUBURBAN (S)	US

SIGNAL	DESTINATION	INDICATION
BN 68 UR	UP RICHMOND	-
	UP MAIN	-
	UP RICHMOND	UR
	DOWN RICHMOND	DR

SIGNAL	DESTINATION	INDICATION
BN 75 UM	UP LOOP (M)	-
	UP MAIN (M)	-
	UP LOOP (S)	UL
	UP MAIN (S)	UM

SIGNAL	DESTINATION	INDICATION
BN 80 UL	PLATFORM 3 (M)	-
	PLATFORM 4 (M)	-
	PLATFORM 3 (S)	3 (TEMP:2A)
	PLATFORM 4 (S)	4 (TEMP:3)

SIGNAL	DESTINATION	INDICATION
BN 85 UM	DOWN SUBURBAN (M)	S
	DOWN SUBURBAN (S)	DS

SIGNAL	DESTINATION	INDICATION
BN 87 UL	DOWN SUBURBAN (M)	S
	DOWN SUBURBAN (S)	DS

SIGNAL	DESTINATION	INDICATION
BN 91 S	DOWN SUBURBAN (M)	-
	DOWN SUBURBAN (S)	-

SIGNAL	DESTINATION	INDICATION
BN 94 S	UP LOOP (M)	L
	UP MAIN (M)	M
	UP SUBURBAN (M)	-
	UP LOOP (S)	UL
	UP MAIN (S)	UM
	UP SUBURBAN (S)	US

SIGNAL	DESTINATION	INDICATION
BN 96 M	UP LOOP (M)	-
	UP MAIN (M)	-
	UP LOOP (S)	UL
	UP MAIN (S)	UM

SIGNAL	DESTINATION	INDICATION
BN 100	UP LOOP (S)	L
	UP MAIN (S)	M
	UP SUBURBAN (S)	S

SIGNAL	DESTINATION	INDICATION
BN 111	DOWN RICHMOND	-
	UP RICHMOND	-
	DOWN RICHMOND	DR
	UP RICHMOND	UR
	No. 1 CAR SIDING	1
	No. 2 CAR SIDING	2
	No. 3 CAR SIDING	3
	No. 4 CAR SIDING	4
No. 5 CAR SIDING	5	
No. 6 CAR SIDING	6	

SIGNAL	DESTINATION	INDICATION
BN 113	DOWN RICHMOND	-
	UP RICHMOND	-
	DOWN RICHMOND	DR
	UP RICHMOND	UR
	No. 1 CAR SIDING	1
	No. 2 CAR SIDING	2
	No. 3 CAR SIDING	3
	No. 4 CAR SIDING	4
	No. 5 CAR SIDING	5
	No. 6 CAR SIDING	6

SECTION : **BLACKTOWN**  
 MAP SET : SEVEN HILLS TO RICHMOND  
 PAGE : 2 OF 2  
 UPDATED TO : 29 April 2024

**INFORMATION**

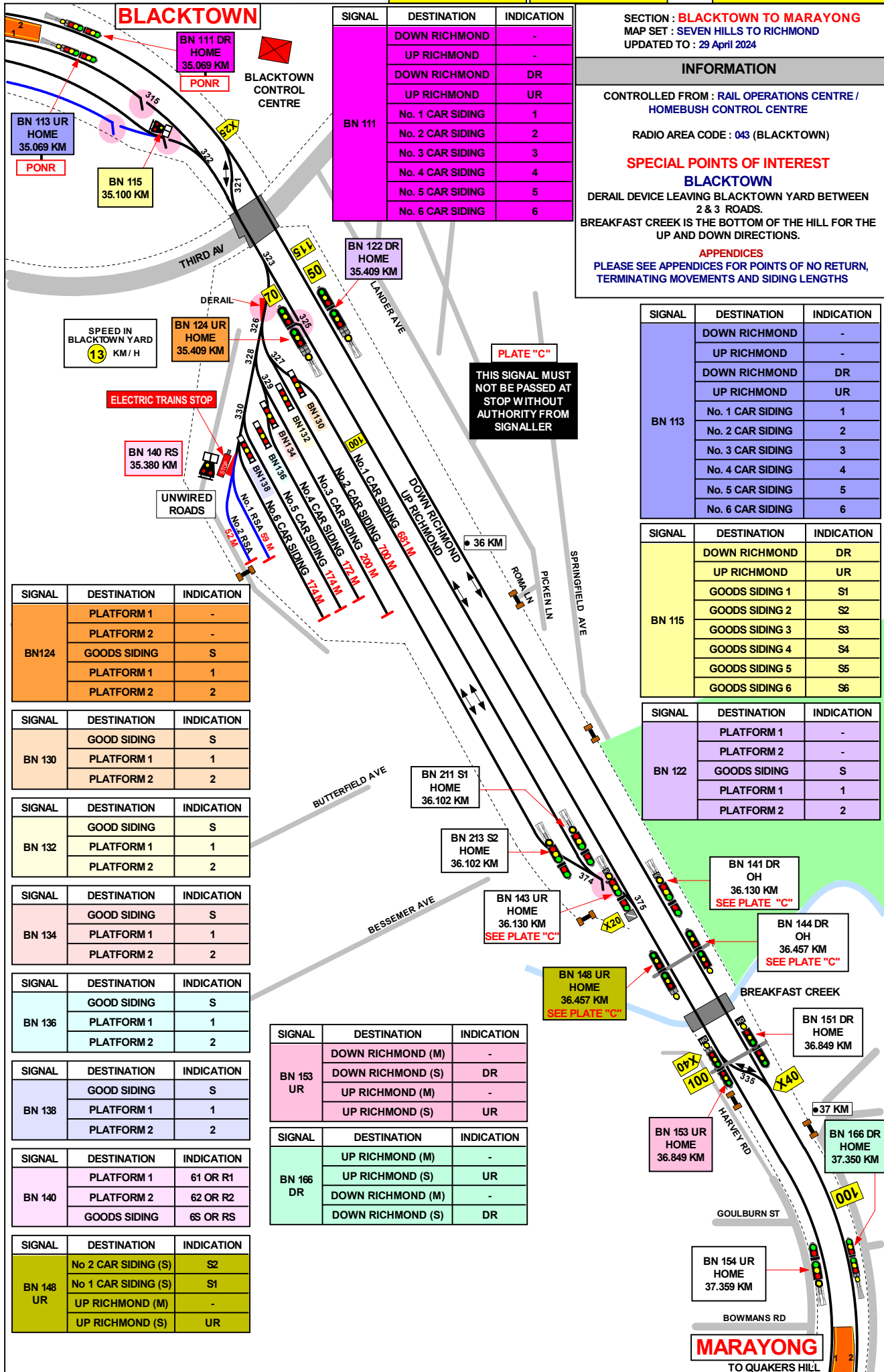
CONTROLLED FROM : RAIL OPERATIONS CENTRE /  
 HOMEBUSH CONTROL CENTRE

RADIO AREA CODE : 043 (BLACKTOWN)

**APPENDICES**  
 PLEASE SEE APPENDICES FOR POINTS OF NO RETURN,  
 TERMINATING MOVEMENTS AND SIDING LENGTHS

A NOTICE BOARD, INSCRIBED "THIS SIGNAL MUST NOT BE  
 PASSED AT STOP WITHOUT AUTHORITY FROM THE  
 SIGNALLER", IS PROVIDED ON THE FIXED STOP SIGNAL AT  
 THE PENRITH END OF No. 5 PLATFORM.

\* BOOKED OUT OF USE



SIGNAL	DESTINATION	INDICATION
BN 111	DOWN RICHMOND	-
	UP RICHMOND	-
	DOWN RICHMOND	DR
	UP RICHMOND	UR
	No. 1 CAR SIDING	1
	No. 2 CAR SIDING	2
No. 3 CAR SIDING	3	
No. 4 CAR SIDING	4	
No. 5 CAR SIDING	5	
No. 6 CAR SIDING	6	

SECTION : **BLACKTOWN TO MARAYONG**  
 MAP SET : SEVEN HILLS TO RICHMOND  
 UPDATED TO : 29 April 2024

**INFORMATION**

CONTROLLED FROM : RAIL OPERATIONS CENTRE /  
 HOMEBUSH CONTROL CENTRE

RADIO AREA CODE : 043 (BLACKTOWN)

**SPECIAL POINTS OF INTEREST**  
**BLACKTOWN**  
 DERAIL DEVICE LEAVING BLACKTOWN YARD BETWEEN  
 2 & 3 ROADS.  
 BREAKFAST CREEK IS THE BOTTOM OF THE HILL FOR THE  
 UP AND DOWN DIRECTIONS.

**APPENDICES**  
 PLEASE SEE APPENDICES FOR POINTS OF NO RETURN,  
 TERMINATING MOVEMENTS AND SIDING LENGTHS

SIGNAL	DESTINATION	INDICATION
BN 113	DOWN RICHMOND	-
	UP RICHMOND	-
	DOWN RICHMOND	DR
	UP RICHMOND	UR
	No. 1 CAR SIDING	1
	No. 2 CAR SIDING	2
No. 3 CAR SIDING	3	
No. 4 CAR SIDING	4	
No. 5 CAR SIDING	5	
No. 6 CAR SIDING	6	

SIGNAL	DESTINATION	INDICATION
BN 115	DOWN RICHMOND	DR
	UP RICHMOND	UR
	GOODS SIDING 1	S1
	GOODS SIDING 2	S2
	GOODS SIDING 3	S3
	GOODS SIDING 4	S4
GOODS SIDING 5	S5	
GOODS SIDING 6	S6	

SIGNAL	DESTINATION	INDICATION
BN 122	PLATFORM 1	-
	PLATFORM 2	-
	GOODS SIDING	S
	PLATFORM 1	1
PLATFORM 2	2	

SIGNAL	DESTINATION	INDICATION
BN124	PLATFORM 1	-
	PLATFORM 2	-
	GOODS SIDING	S
	PLATFORM 1	1
PLATFORM 2	2	

SIGNAL	DESTINATION	INDICATION
BN 130	GOOD SIDING	S
	PLATFORM 1	1
	PLATFORM 2	2

SIGNAL	DESTINATION	INDICATION
BN 132	GOOD SIDING	S
	PLATFORM 1	1
	PLATFORM 2	2

SIGNAL	DESTINATION	INDICATION
BN 134	GOOD SIDING	S
	PLATFORM 1	1
	PLATFORM 2	2

SIGNAL	DESTINATION	INDICATION
BN 136	GOOD SIDING	S
	PLATFORM 1	1
	PLATFORM 2	2

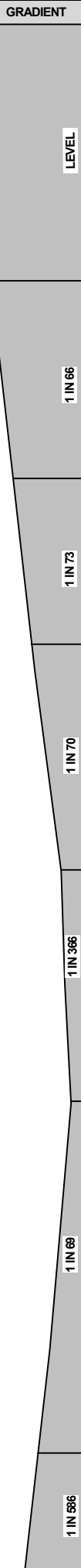
SIGNAL	DESTINATION	INDICATION
BN 138	GOOD SIDING	S
	PLATFORM 1	1
	PLATFORM 2	2

SIGNAL	DESTINATION	INDICATION
BN 140	PLATFORM 1	61 OR R1
	PLATFORM 2	62 OR R2
	GOODS SIDING	6S OR RS

SIGNAL	DESTINATION	INDICATION
BN 148 UR	No 2 CAR SIDING (S)	S2
	No 1 CAR SIDING (S)	S1
	UP RICHMOND (M)	-
	UP RICHMOND (S)	UR

SIGNAL	DESTINATION	INDICATION
BN 153 UR	DOWN RICHMOND (M)	-
	DOWN RICHMOND (S)	DR
	UP RICHMOND (M)	-
	UP RICHMOND (S)	UR

SIGNAL	DESTINATION	INDICATION
BN 166 DR	UP RICHMOND (M)	-
	UP RICHMOND (S)	UR
	DOWN RICHMOND (M)	-
	DOWN RICHMOND (S)	DR



SECTION : **MARAYONG TO QUAKERS HILL**  
 MAP SET : SEVEN HILLS TO RICHMOND  
 UPDATED TO : 29 April 2024

**INFORMATION**

CONTROLLED FROM : RAIL OPERATIONS CENTRE /  
 HOMEBUSH CONTROL CENTRE

RADIO AREA CODE : 043 (BLACKTOWN)

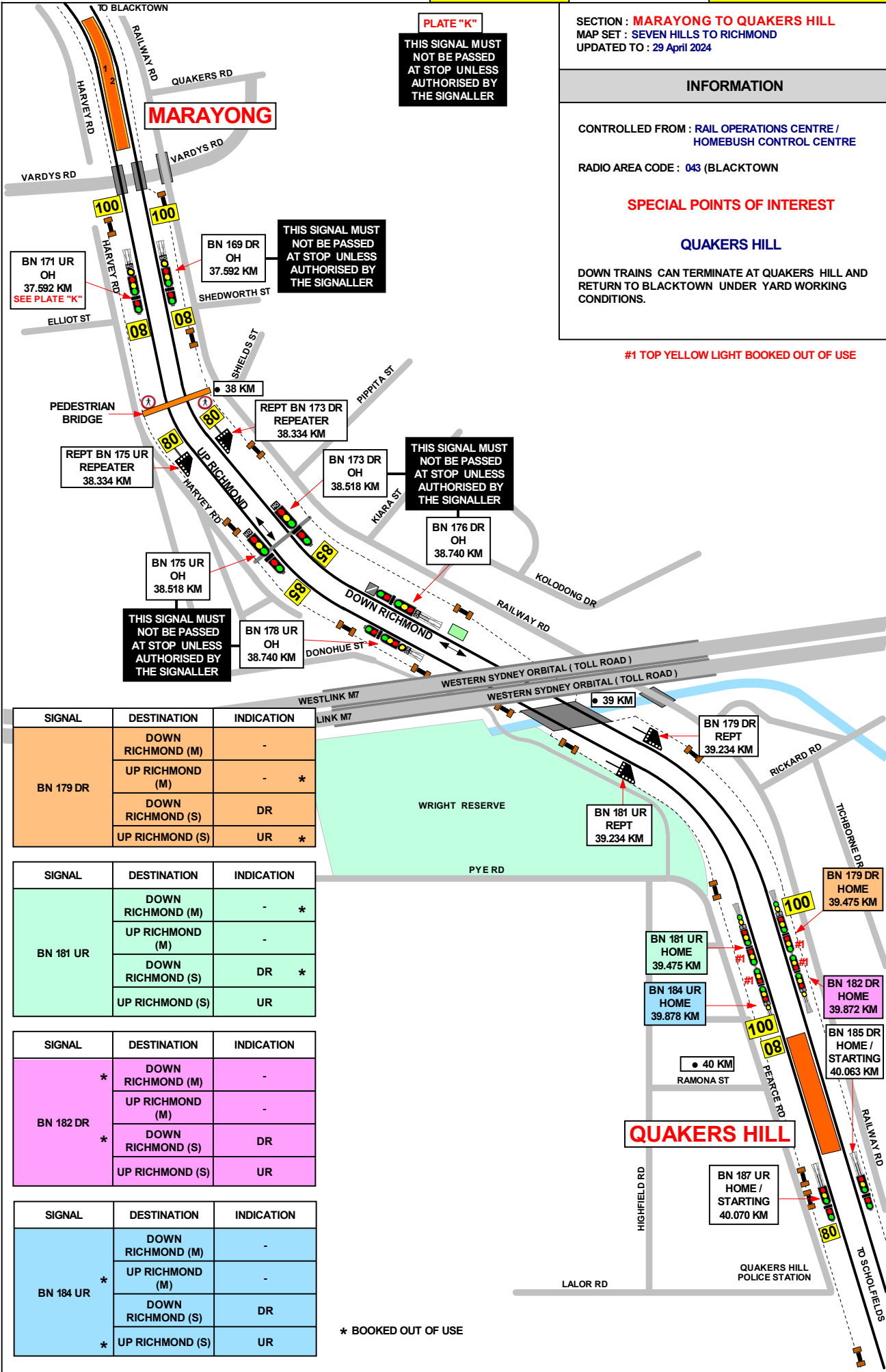
**SPECIAL POINTS OF INTEREST**

**QUAKERS HILL**

DOWN TRAINS CAN TERMINATE AT QUAKERS HILL AND  
 RETURN TO BLACKTOWN UNDER YARD WORKING  
 CONDITIONS.

#1 TOP YELLOW LIGHT BOOKED OUT OF USE

GRADIENT
1 IN 586
1 IN 40
1 IN 108
1 IN 120
1 IN 173
1 IN 150
1 IN 173
1 IN 106



**PLATE "K"**  
 THIS SIGNAL MUST  
 NOT BE PASSED  
 AT STOP UNLESS  
 AUTHORISED BY  
 THE SIGNALLER

THIS SIGNAL MUST  
 NOT BE PASSED  
 AT STOP UNLESS  
 AUTHORISED BY  
 THE SIGNALLER

THIS SIGNAL MUST  
 NOT BE PASSED  
 AT STOP UNLESS  
 AUTHORISED BY  
 THE SIGNALLER

THIS SIGNAL MUST  
 NOT BE PASSED  
 AT STOP UNLESS  
 AUTHORISED BY  
 THE SIGNALLER

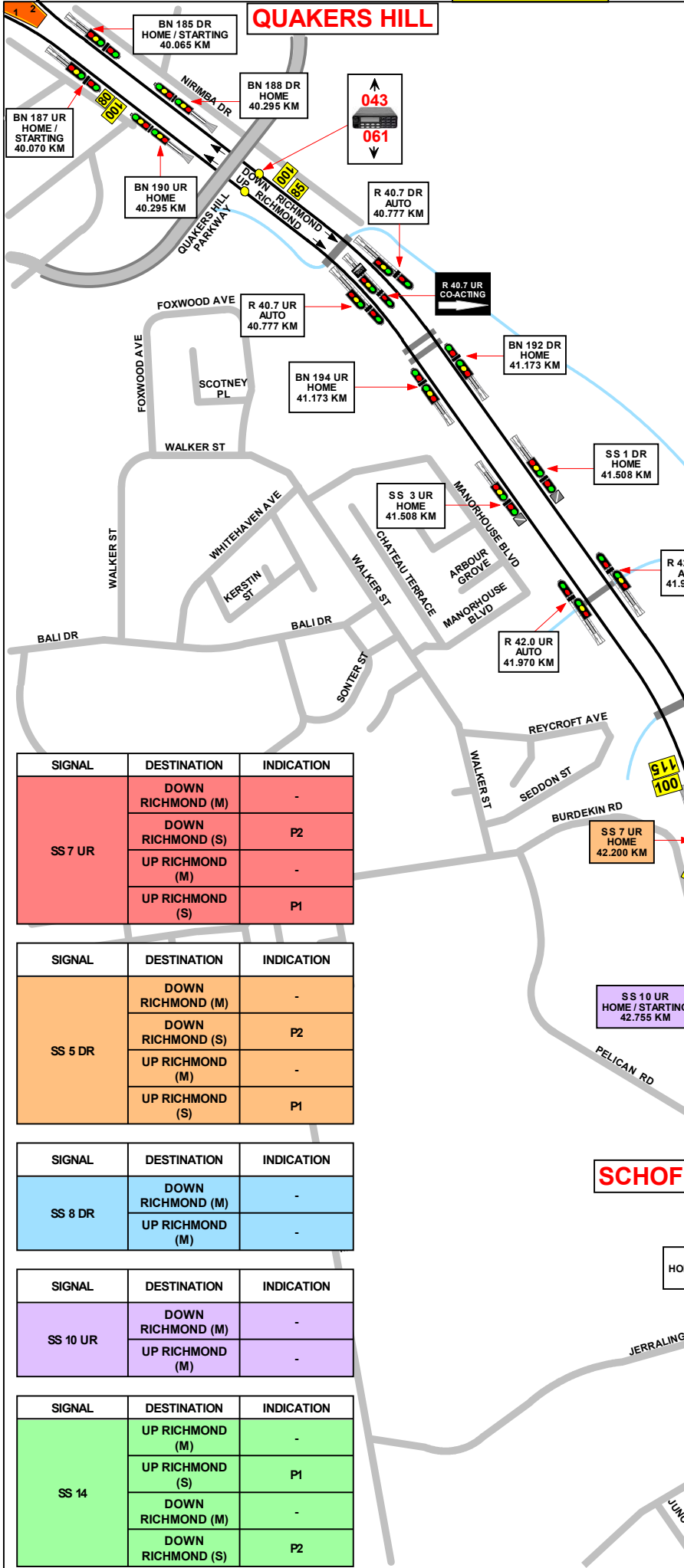
SIGNAL	DESTINATION	INDICATION
BN 179 DR	DOWN RICHMOND (M)	-
	UP RICHMOND (M)	- *
	DOWN RICHMOND (S)	DR
	UP RICHMOND (S)	UR *

SIGNAL	DESTINATION	INDICATION
BN 181 UR	DOWN RICHMOND (M)	- *
	UP RICHMOND (M)	-
	DOWN RICHMOND (S)	DR *
	UP RICHMOND (S)	UR

SIGNAL	DESTINATION	INDICATION
BN 182 DR	DOWN RICHMOND (M)	-
	UP RICHMOND (M)	-
	DOWN RICHMOND (S)	DR
	UP RICHMOND (S)	UR

SIGNAL	DESTINATION	INDICATION
BN 184 UR	DOWN RICHMOND (M)	-
	UP RICHMOND (M)	-
	DOWN RICHMOND (S)	DR
	UP RICHMOND (S)	UR

\* BOOKED OUT OF USE



**SECTION : QUAKERS HILL TO SCHOFIELDS**  
**MAP SET : BLACKTOWN TO RICHMOND**  
 UPDATED TO : 29 April 2024

---

**INFORMATION**

CONTROLLED FROM : RAIL OPERATIONS CENTRE /  
 HOME BUSH CONTROL CENTRE

RADIO AREA CODE : 043 (BLACKTOWN)  
 061 (RICHMOND)

**SPECIAL POINTS OF INTEREST**

**QUAKERS HILL**

DOWN TRAINS CAN TERMINATE AT QUAKERS HILL AND RETURN TO BLACKTOWN UNDER YARD WORKING CONDITIONS.

WHEN EITHER UP OR DOWN TRAINS ARRIVE AT QUAKERS HILL, IF THE SIGNAL AT THE END OF THE PLATFORM IS AT STOP THEN THE TRAIN STOP PRECEDING THE PLATFORM WILL STAY UP UNTIL THE DRIVER REDUCES THE SPEED OF THE TRAIN TO APPROXIMATELY 15-20 KMH.

GRADIENT
1 IN 106
1 IN 74
1 IN 330
1 IN 122
1 IN 128
1 IN 82
1 IN 82
1 IN 116
1 IN 81
1 IN 45
1 IN 82

SIGNAL	DESTINATION	INDICATION
SS 7 UR	DOWN RICHMOND (M)	-
	DOWN RICHMOND (S)	P2
	UP RICHMOND (M)	-
	UP RICHMOND (S)	P1

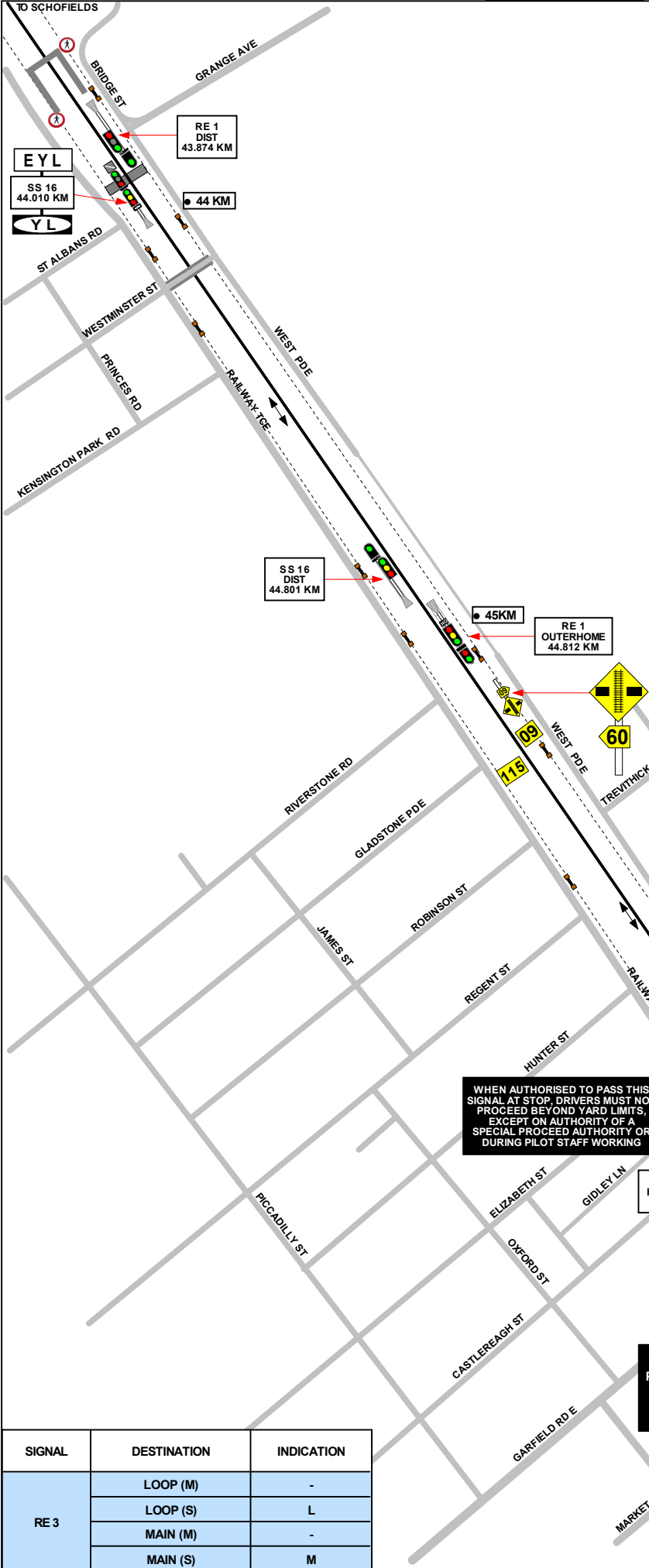
SIGNAL	DESTINATION	INDICATION
SS 5 DR	DOWN RICHMOND (M)	-
	DOWN RICHMOND (S)	P2
	UP RICHMOND (M)	-
	UP RICHMOND (S)	P1

SIGNAL	DESTINATION	INDICATION
SS 8 DR	DOWN RICHMOND (M)	-
	UP RICHMOND (M)	-

SIGNAL	DESTINATION	INDICATION
SS 10 UR	DOWN RICHMOND (M)	-
	UP RICHMOND (M)	-

SIGNAL	DESTINATION	INDICATION
SS 14	UP RICHMOND (M)	-
	UP RICHMOND (S)	P1
	DOWN RICHMOND (M)	-
	DOWN RICHMOND (S)	P2

WHEN AUTHORISED TO PASS THIS SIGNAL AT STOP DRIVERS MUST NOT PROCEED BEYOND YARD LIMITS, EXCEPT ON AUTHORITY OF A SPECIAL PROCEED AUTHORITY OR DURING PILOT STAFF WORKING



SECTION : **SCHOFIELDS TO RIVERSTONE**  
 MAP SET : **SEVEN HILLS TO RICHMOND**  
 UPDATED TO : **29 April 2024**

---

**INFORMATION**

CONTROLLED FROM : **RAIL OPERATIONS CENTRE / HOME BUSH CONTROL CENTRE**

RADIO AREA CODE : **061 (RICHMOND)**

**SPECIAL POINTS OF INTEREST**

**RIVERSTONE**

AT THE MULGRAVE END OF RIVERSTONE PLATFORM 1 THERE IS A NOTICE BOARD READING "DO NOT PROCEED FROM THE PLATFORM UNTIL RE 9 SIGNAL IS CLEAR AND GUARD HAS GIVEN THE BELL SIGNAL TO PROCEED."

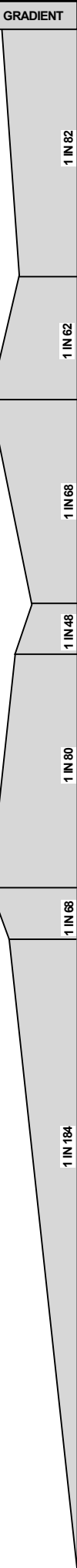
AT RIVERSTONE THERE ARE CATCH POINTS AFTER SIGNAL **RE 7** ON THE DOWN LINE AND AFTER SIGNAL **RE 6** ON THE UP LINE.

THE GOODS SIDING BESIDE No. 2 PLATFORM IS UNWIRED.

CAUTION SHOULD BE USED WHEN APPROACHING VINEYARD IN BOTH RUNNING DIRECTIONS AS THE PLATFORM IS PARTIALLY OBSCURED BY TREES.

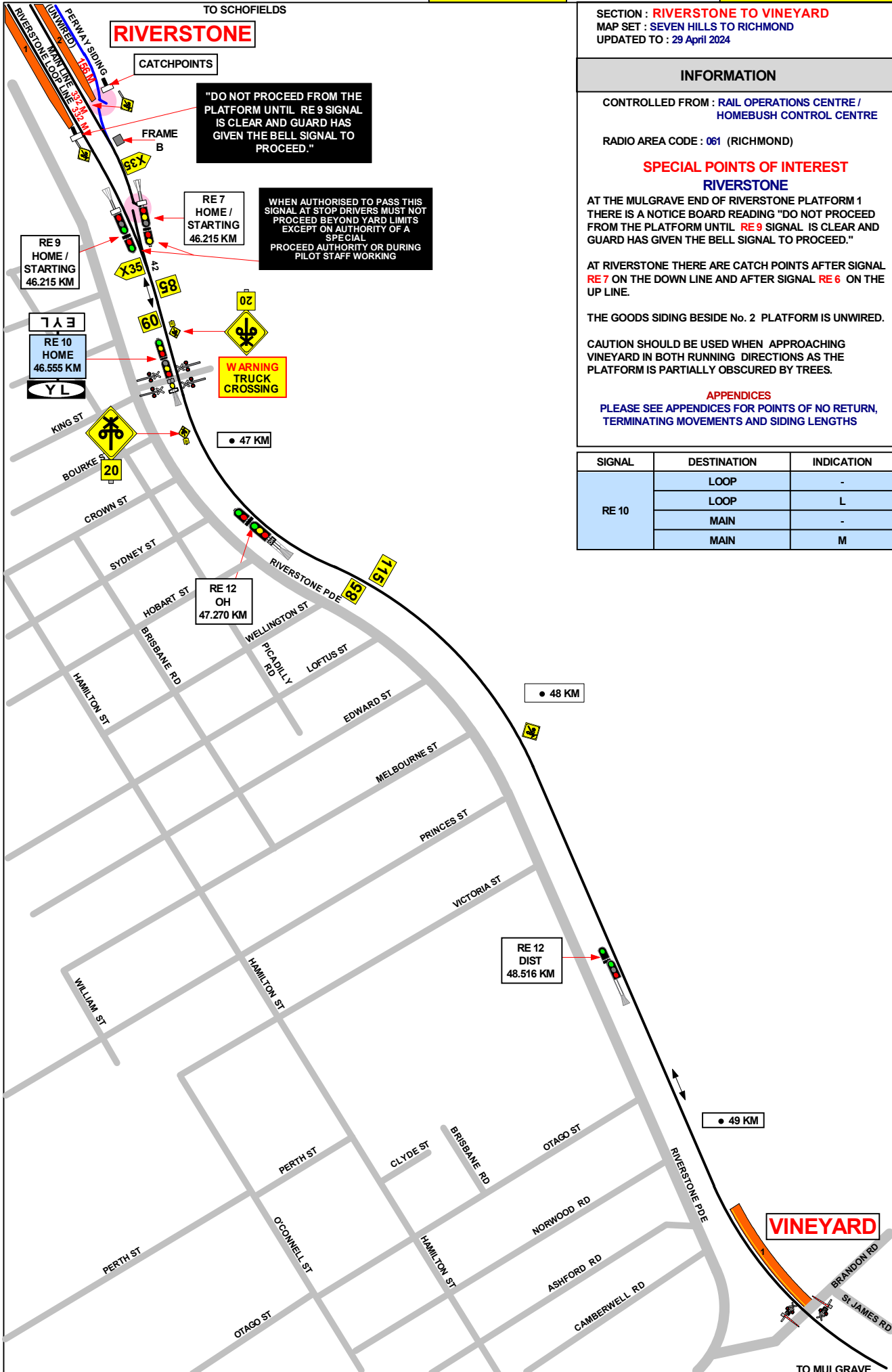
**APPENDICES**

PLEASE SEE APPENDICES FOR POINTS OF NO RETURN, TERMINATING MOVEMENTS AND SIDING LENGTHS



SIGNAL	DESTINATION	INDICATION
RE 3	LOOP (M)	-
	LOOP (S)	L
	MAIN (M)	-
	MAIN (S)	M





**"DO NOT PROCEED FROM THE PLATFORM UNTIL RE 9 SIGNAL IS CLEAR AND GUARD HAS GIVEN THE BELL SIGNAL TO PROCEED."**

**WHEN AUTHORISED TO PASS THIS SIGNAL AT STOP DRIVERS MUST NOT PROCEED BEYOND YARD LIMITS EXCEPT ON AUTHORITY OF A SPECIAL PROCEED AUTHORITY OR DURING PILOT STAFF WORKING**

SECTION : **RIVERSTONE TO VINEYARD**  
 MAP SET : SEVEN HILLS TO RICHMOND  
 UPDATED TO : 29 April 2024

**INFORMATION**

CONTROLLED FROM : RAIL OPERATIONS CENTRE /  
 HOMEBUSH CONTROL CENTRE

RADIO AREA CODE : 061 (RICHMOND)

**SPECIAL POINTS OF INTEREST  
 RIVERSTONE**

AT THE MULGRAVE END OF RIVERSTONE PLATFORM 1 THERE IS A NOTICE BOARD READING "DO NOT PROCEED FROM THE PLATFORM UNTIL RE 9 SIGNAL IS CLEAR AND GUARD HAS GIVEN THE BELL SIGNAL TO PROCEED."

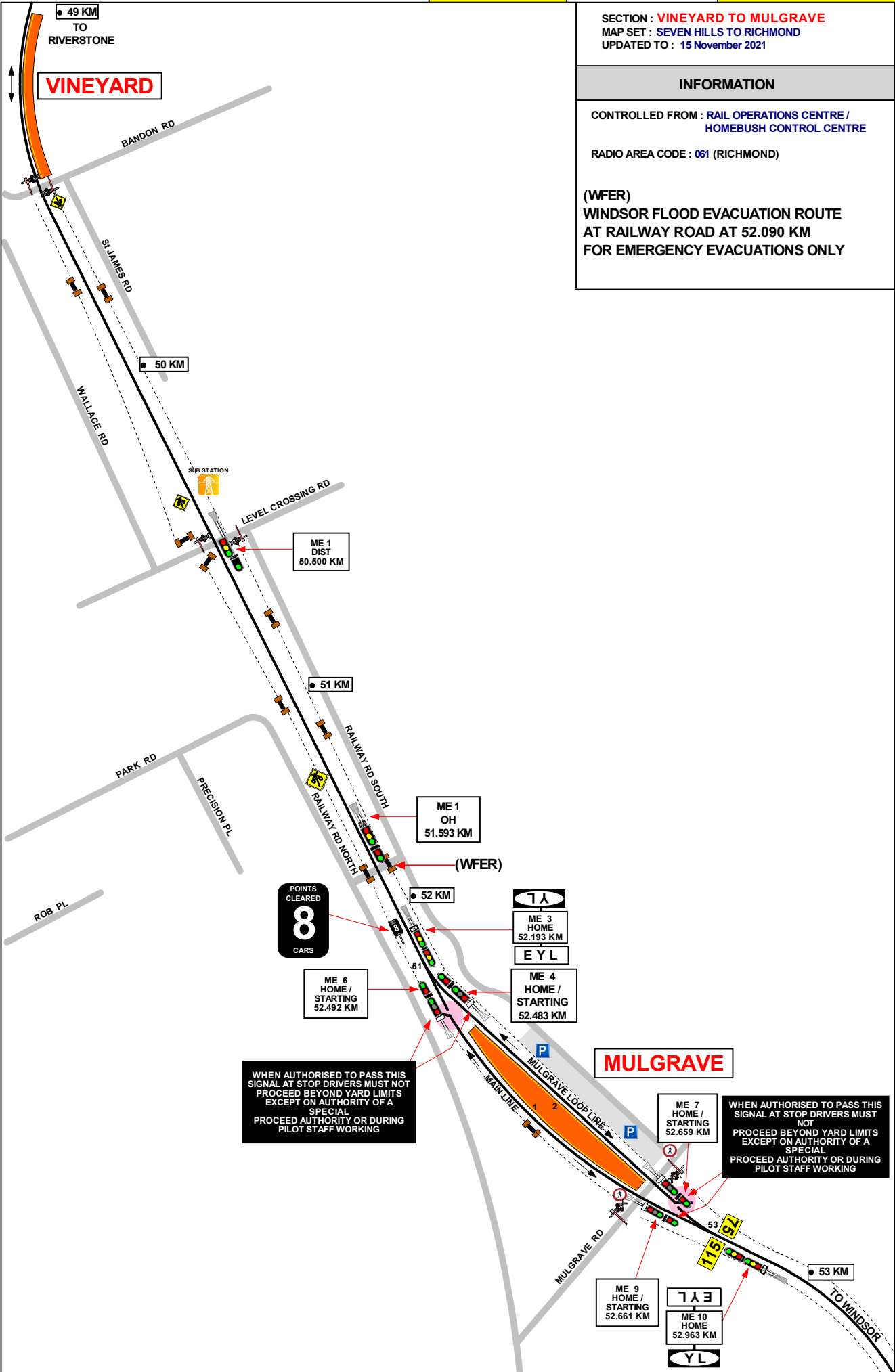
AT RIVERSTONE THERE ARE CATCH POINTS AFTER SIGNAL RE 7 ON THE DOWN LINE AND AFTER SIGNAL RE 6 ON THE UP LINE.

THE GOODS SIDING BESIDE No. 2 PLATFORM IS UNWIRED.

CAUTION SHOULD BE USED WHEN APPROACHING VINEYARD IN BOTH RUNNING DIRECTIONS AS THE PLATFORM IS PARTIALLY OBSCURED BY TREES.

**APPENDICES**  
 PLEASE SEE APPENDICES FOR POINTS OF NO RETURN, TERMINATING MOVEMENTS AND SIDING LENGTHS

SIGNAL	DESTINATION	INDICATION
RE 10	LOOP	-
	LOOP	L
	MAIN	-
	MAIN	M



SECTION : **VINEYARD TO MULGRAVE**  
 MAP SET : SEVEN HILLS TO RICHMOND  
 UPDATED TO : 15 November 2021

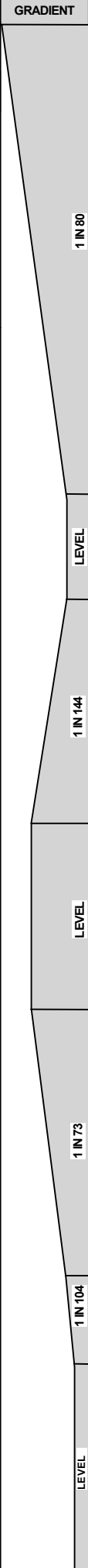
---

**INFORMATION**

CONTROLLED FROM : RAIL OPERATIONS CENTRE /  
 HOMEBUSH CONTROL CENTRE

RADIO AREA CODE : 061 (RICHMOND)

(WFER)  
**WINDSOR FLOOD EVACUATION ROUTE  
 AT RAILWAY ROAD AT 52.090 KM  
 FOR EMERGENCY EVACUATIONS ONLY**



WHEN AUTHORISED TO PASS THIS SIGNAL AT STOP DRIVERS MUST NOT PROCEED BEYOND YARD LIMITS EXCEPT ON AUTHORITY OF A SPECIAL PROCEED AUTHORITY OR DURING PILOT STAFF WORKING

WHEN AUTHORISED TO PASS THIS SIGNAL AT STOP DRIVERS MUST NOT PROCEED BEYOND YARD LIMITS EXCEPT ON AUTHORITY OF A SPECIAL PROCEED AUTHORITY OR DURING PILOT STAFF WORKING

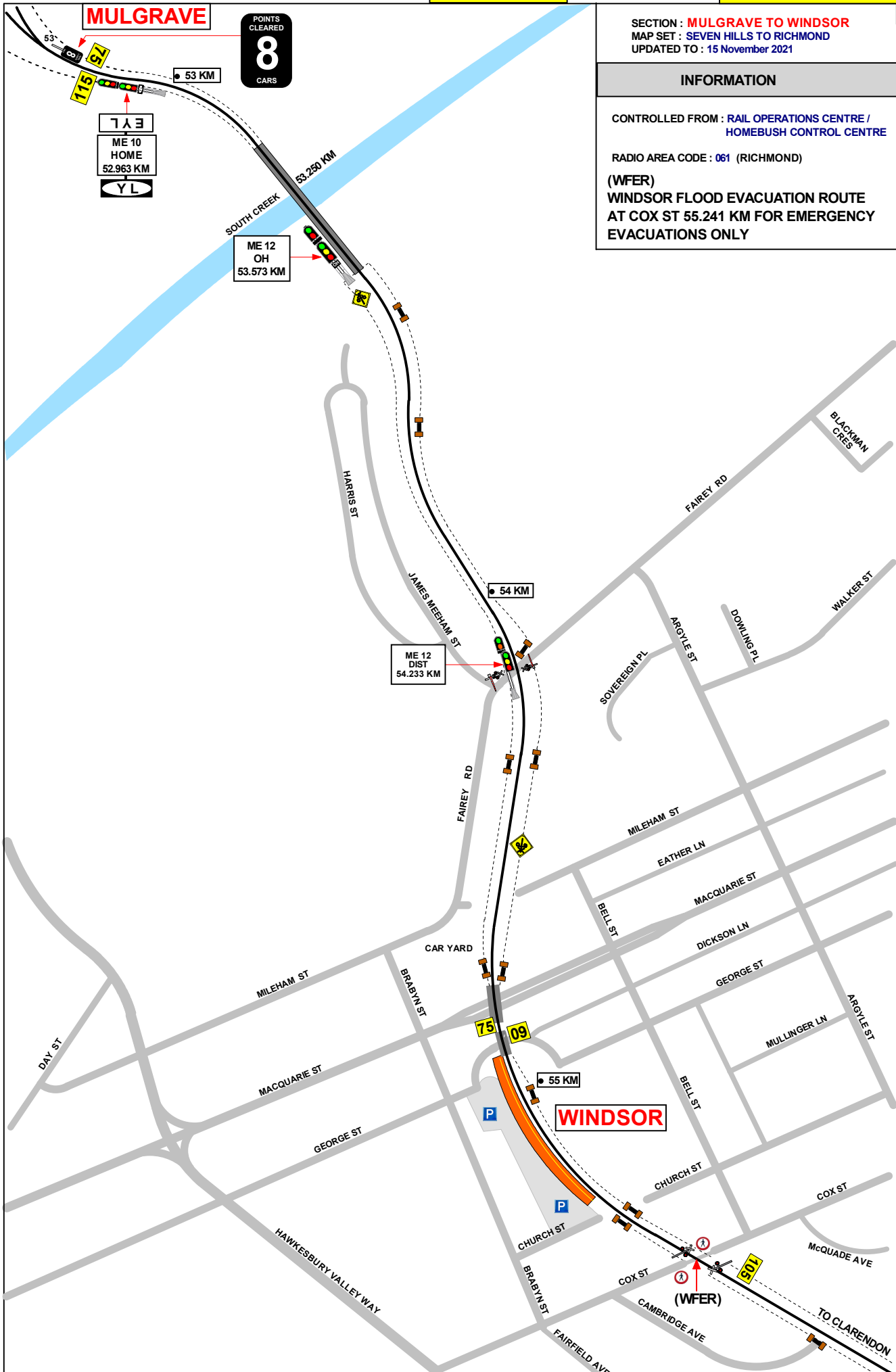
SECTION : **MULGRAVE TO WINDSOR**  
MAP SET : SEVEN HILLS TO RICHMOND  
UPDATED TO : 15 November 2021

**INFORMATION**

CONTROLLED FROM : RAIL OPERATIONS CENTRE /  
HOMEBUSH CONTROL CENTRE

RADIO AREA CODE : 061 (RICHMOND)

(WFER)  
**WINDSOR FLOOD EVACUATION ROUTE  
AT COX ST 55.241 KM FOR EMERGENCY  
EVACUATIONS ONLY**



LEVEL

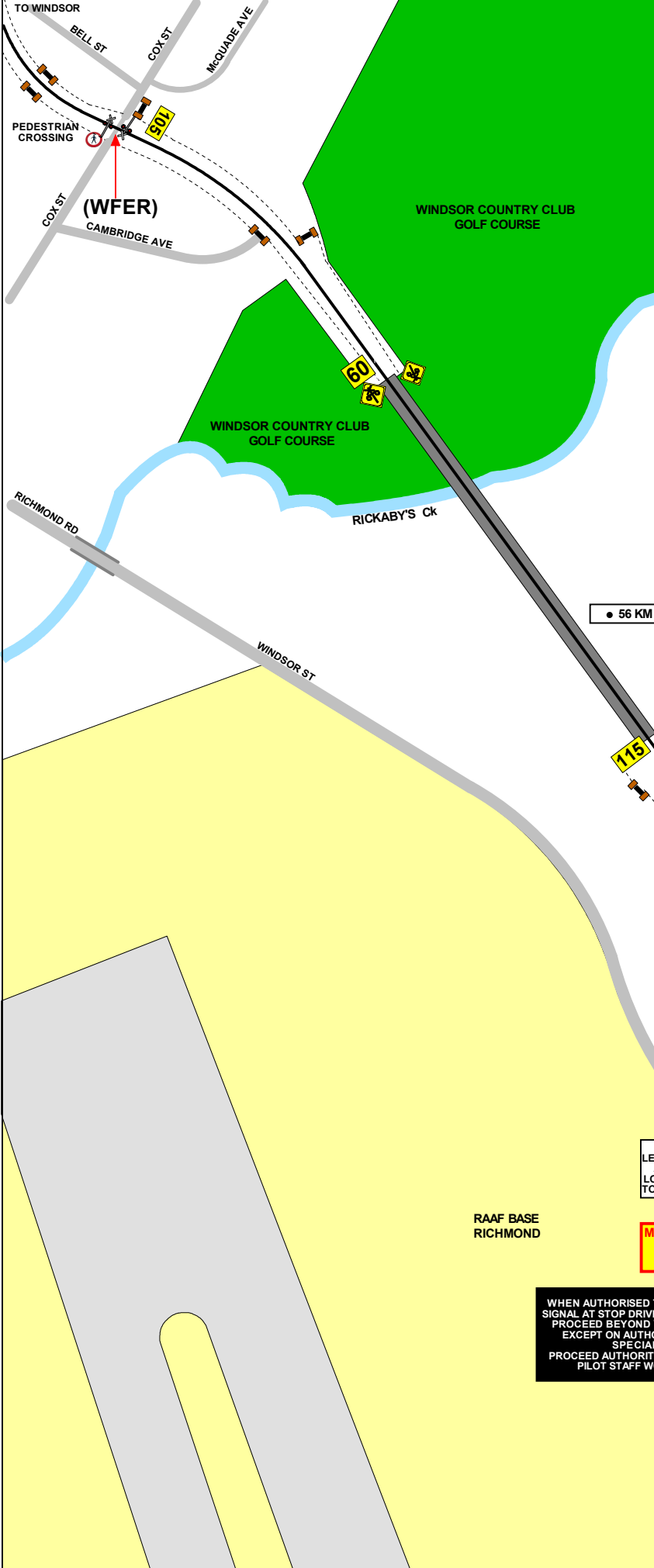
1 IN 97

1 IN 116

LEVEL

1 IN 86

LEVEL



SECTION : **WINDSOR TO CLARENDON**  
 MAP SET : SEVEN HILLS TO RICHMOND  
 UPDATED TO : 29 April 2024

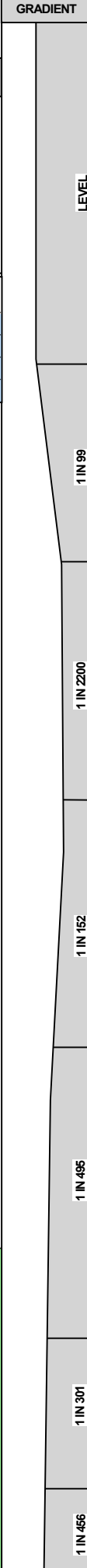
**INFORMATION**

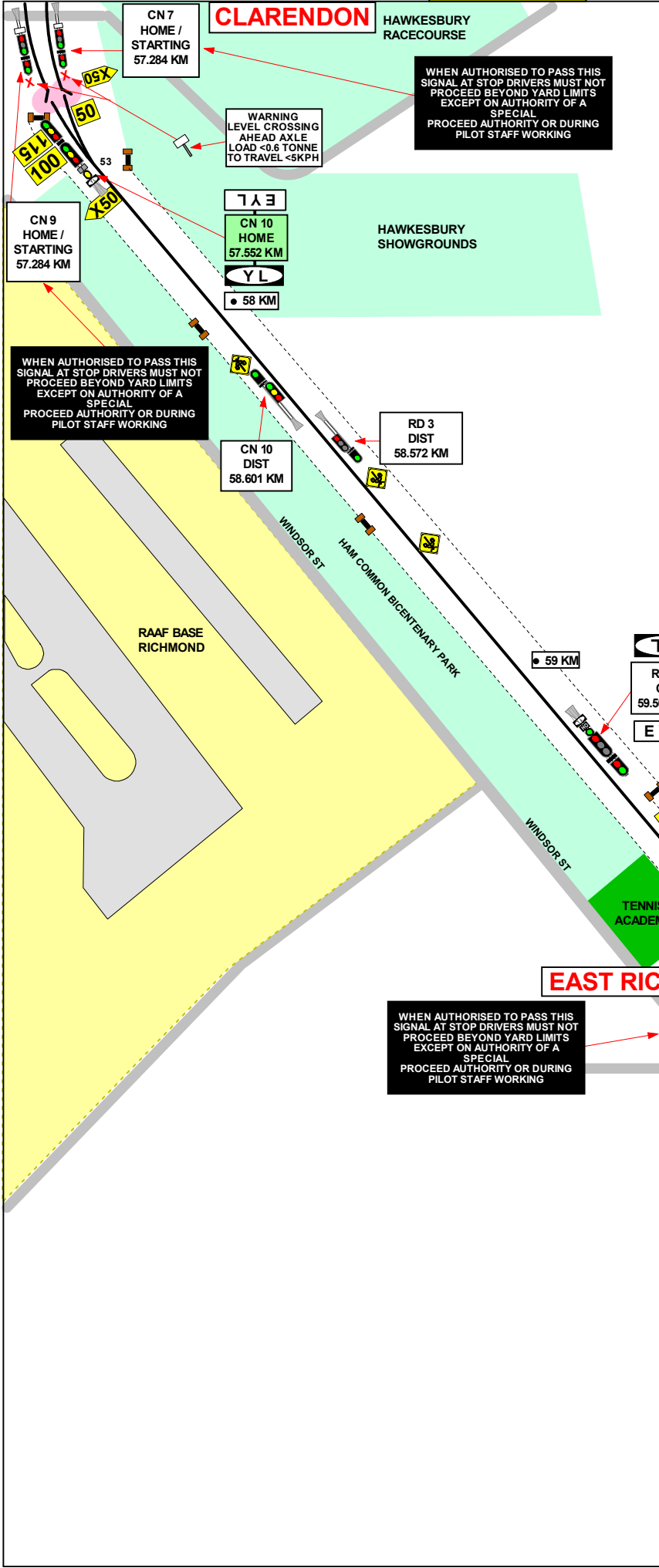
CONTROLLED FROM : RAIL OPERATIONS CENTRE /  
 HOMEBUSH CONTROL CENTRE

RADIO AREA CODE : 061 (RICHMOND)

(WFER)  
**WINDSOR FLOOD EVACUATION ROUTE  
 AT COX ST 55.241 KM FOR EMERGENCY  
 EVACUATIONS ONLY**

SIGNAL	DESTINATION	INDICATION
CN 3	LOOP LINE (M)	-
	LOOP LINE (S)	L
	MAIN LINE (M)	-
	MAIN LINE (S)	M





SECTION : **CLARENDON TO RICHMOND**  
 MAP SET : **SEVEN HILLS TO RICHMOND**  
 UPDATED TO : 29 April 2024

GRADIENT	
1 IN 301	
1 IN 456	
1 IN 260	
1 IN 1100	
1 IN 388	
1 IN 176	
1 IN 77	
1 IN 660	

**INFORMATION**

CONTROLLED FROM : **RAIL OPERATIONS CENTRE / HOMEBUSH CONTROL CENTRE**

RADIO AREA CODE : 061 (RICHMOND)

**SPECIAL POINTS OF INTEREST**

**RICHMOND**

A NOTICE BOARD INSCRIBED "BLOCK JOINTS" IS ON THE UP SIDE OF THE MAIN LINE 100 METRES ON THE SYDNEY SIDE OF FRAME "D" POINTS. WHEN A TRAIN IS SHUNTING IN THE UP DIRECTION IT MUST NOT PROCEED BEYOND THE "BLOCK JOINT" NOTICE BOARD.

**APPENDICES**

PLEASE SEE APPENDICES FOR POINTS OF NO RETURN, TERMINATING MOVEMENTS AND SIDING LENGTHS

SIGNAL	DESTINATION	INDICATION
CN 10	MAIN LINE(M)	-
	MAIN LINE(S)	M
	LOOP LINE(M)	-
	LOOP LINE(S)	L

SIGNAL	DESTINATION	INDICATION
RD 5	PLATFORM 2	2
	PLATFORM 1	1