

ASB Worksite Protection for Albion Park Routine Network Maintenance Activities

DOCUMENT NO.	D2024/12990
WORK DESCRIPTION	Routine Network Maintenance Activities
WPP Number	SC60C 10118
SCOPE:	<p>This SWI is applicable for the worksite protection arrangements using ASB for routine network maintenance activities performed by South Coast Maintenance Teams</p> <p>Work activities may include:</p> <ul style="list-style-type: none"> • Points Maintenance • Train Stop Maintenance • Track Circuit Testing • Turnout Inspections • KK Testing • Track Patrol • OHW Inspections • Structures Examinations
AUTHORISATIONS:	<p>Protection Officer: Protection Officer Level 1 or higher</p> <p>Lookout: Handsignaller Level 1 or higher, Protection Officer Level 1 or higher</p>
SAFETY CONTROLS - Absolute Signal Blocking (ASB) arrangements:	<p>ASB established to exclude rail traffic on the Main Line, Loop Line, and the South Coast Branch Line at Albion Park</p> <p>For reference only.</p> <p>The assessed ASB protection is:</p> <ul style="list-style-type: none"> • 42.3 Signal at STOP with blocking facilities applied on the City side of the worksite. • 42.5 Signal at STOP with blocking facilities applied on the City side of the worksite. • 42.6 Signal at STOP with blocking facilities applied on the Country side of the worksite. • 42.4 Signal at STOP with blocking facilities applied on the Country side of the worksite.
PRESTART REQUIREMENTS:	<p>Protection Officer assessment checklist must be completed before instructions in this SWI are followed.</p> <p>Tools and equipment required:</p> <ul style="list-style-type: none"> • Protection Officer requires a phone to contact the Signaller • Lookouts require a high-visibility arm sleeve and a whistle / horn
FURTHER INFORMATION:	<p><i>NWT 300 Planning work in the Rail Corridor</i></p> <p><i>NWT 308 Absolute Signal Blocking</i></p> <p><i>NPR 703 Using Absolute Signal Blocking</i></p> <p><i>NGE 200 Walking in the Danger Zone</i></p> <p><i>NLA 418 Wollongong – Bomaderry (Nowra)</i></p>

ASB Worksite Protection for Albion Park Routine Network Maintenance Activities

Protection Officer assessment checklist

Protection Officer's name:

Yes

(Tick if Yes)

This document has not expired 12 months beyond the issue date.

On-site safety assessment has been completed and additional hazards and controls recorded on the pre-work briefing (Page 3).

SWI details and protection arrangements have been reviewed and validated for the assessed worksite location.

Corridor Safety Number

Protection Officer Signature

Date

Warning



If an above item does not apply, the Protection Officer must not use this Safe Work Instruction. A new worksite protection plan must be completed in accordance with NRF 014 Worksite Protection Pre-work briefing and NRF 015 Worksite Protection Plan.

ASB Worksite Protection for Albion Park Routine Network Maintenance Activities

Worksite Protection Pre-work Briefing

Briefing date: / /

Protection Officer details

<input type="text"/> name	<input type="text"/> signature	<input type="text"/> contact No.
---------------------------	--------------------------------	----------------------------------

Work location: Scope of work: Worksite protection: Refer to Worksite Protection Plan for details

Hazards (e.g. Site-specific hazards identified, including physical environment, human errors, plant, and equipment)	Controls (to be implemented to eliminate or reduce the risk to the lowest practicable level)	Person responsible for Control
Approaching rail traffic	ASB implemented. Workers to remain within worksite limits.	Protection Officer
Adjacent live lines	Designated work and walk areas as instructed by the Protection Officer. Workers must remain within the ASB nominated worksite location limits whilst work is being performed.	Protection Officer
Electrical infrastructure	Electrical infrastructure is to be treated as live and workers must maintain a safe approach distance as instructed by the Protection Officer or Workplace Supervisor.	Protection Officer & Workplace Supervisor
Access to / Egress from worksite	Protection Officer will assess and instruct when it is safe for workers to use <i>NGE 200 Walking in the Danger Zone</i> to move to and from the worksite or safe place.	All
Mobile phone distraction	Mobile phone usage is not allowed in the Danger Zone. Mobile phones may be used only in a safe place after informing the Protection Officer.	All

ASB Worksite Protection for Albion Park Routine Network Maintenance Activities



ASB Worksite Protection for Albion Park Routine Network Maintenance Activities

Worksite Protection Plan – Absolute Signal Blocking

1. ASB request – Protection Officer Details

name	signature	contact No.
RSW or RIW No.	designation	Planned Duration

Type of work: **Routine Network Maintenance Activities**

2. Worksite location

on the **Main Line, Loop Line and South Coast Branch Line** from **42.5 Signal** to **42.6 Signal**

3. Protection to be used

Signal(s) at STOP with blocking facilities applied

Protection is required from other Signallers at **Location / panel** **Location / panel**

4. Assurances

All points of entry into the affected portion of track are protected and blocking facilities applied ☐

The last rail traffic to pass the protection was **rail traffic ID** The last known location of rail traffic is **location**

Confirm that there is no rail traffic between the protection and the worksite ☐

5. Authorisation

Authorised by Signaller

name **South Coast Panel** **hr** **/ /**

Protection Number **Notes**

6. Temporarily Suspending ASB

Provide the name and worksite location <input type="checkbox"/>	Provide the name and worksite location <input type="checkbox"/>	Provide the name and worksite location <input type="checkbox"/>
Workers and equipment are clear of the Danger Zone <input type="checkbox"/>	Workers and equipment are clear of the Danger Zone <input type="checkbox"/>	Workers and equipment are clear of the Danger Zone <input type="checkbox"/>
Provide protection number <input type="checkbox"/>	Provide protection number <input type="checkbox"/>	Provide protection number <input type="checkbox"/>
ASB suspended at hr	ASB suspended at hr	ASB suspended at hr

7. Re-establish ASB assurances

The worksite location is identical <input type="checkbox"/>	The worksite location is identical <input type="checkbox"/>	The worksite location is identical <input type="checkbox"/>
All points of entry into the affected portion of track are protected and blocking facilities applied <input type="checkbox"/>	All points of entry into the affected portion of track are protected and blocking facilities applied <input type="checkbox"/>	All points of entry into the affected portion of track are protected and blocking facilities applied <input type="checkbox"/>
The last rail traffic to pass the protection was rail traffic ID	The last rail traffic to pass the protection was rail traffic ID	The last rail traffic to pass the protection was rail traffic ID
The last known location of rail traffic is location	The last known location of rail traffic is location	The last known location of rail traffic is location
There is no approaching rail traffic between the protection and the worksite <input type="checkbox"/>	There is no approaching rail traffic between the protection and the worksite <input type="checkbox"/>	There is no approaching rail traffic between the protection and the worksite <input type="checkbox"/>
ASB re-established at hr	ASB re-established at hr	ASB re-established at hr
Protection Number	Protection Number	Protection Number

8. Ending

Provide name and worksite location ☐ Workers and equipment clear of the Danger Zone ☐ Provide protection number ☐ Ended at **hr**

ASB Worksite Protection for Albion Park Routine Network Maintenance Activities

6. Temporarily Suspending ASB

Provide the name and worksite location	<input type="checkbox"/>	Provide the name and worksite location	<input type="checkbox"/>	Provide the name and worksite location	<input type="checkbox"/>
Workers and equipment are clear of the Danger Zone	<input type="checkbox"/>	Workers and equipment are clear of the Danger Zone	<input type="checkbox"/>	Workers and equipment are clear of the Danger Zone	<input type="checkbox"/>
Provide protection number	<input type="checkbox"/>	Provide protection number	<input type="checkbox"/>	Provide protection number	<input type="checkbox"/>
ASB suspended at	<input type="text"/> hr	ASB suspended at	<input type="text"/> hr	ASB suspended at	<input type="text"/> hr

7. Re-establish ASB assurances

The worksite location is identical	<input type="checkbox"/>	The worksite location is identical	<input type="checkbox"/>	The worksite location is identical	<input type="checkbox"/>
All points of entry into the affected portion of track are protected and blocking facilities applied	<input type="checkbox"/>	All points of entry into the affected portion of track are protected and blocking facilities applied	<input type="checkbox"/>	All points of entry into the affected portion of track are protected and blocking facilities applied	<input type="checkbox"/>
The last rail traffic to pass the protection was	<input type="text"/> rail traffic ID	The last rail traffic to pass the protection was	<input type="text"/> rail traffic ID	The last rail traffic to pass the protection was	<input type="text"/> rail traffic ID
The last known location of rail traffic is	<input type="text"/> location	The last known location of rail traffic is	<input type="text"/> location	The last known location of rail traffic is	<input type="text"/> location
There is no approaching rail traffic between the protection and the worksite	<input type="checkbox"/>	There is no approaching rail traffic between the protection and the worksite	<input type="checkbox"/>	There is no approaching rail traffic between the protection and the worksite	<input type="checkbox"/>
ASB re-established at	<input type="text"/> hr	ASB re-established at	<input type="text"/> hr	ASB re-established at	<input type="text"/> hr
Protection Number	<input type="text"/>	Protection Number	<input type="text"/>	Protection Number	<input type="text"/>

Notes

6. Temporarily Suspending ASB

Provide the name and worksite location	<input type="checkbox"/>	Provide the name and worksite location	<input type="checkbox"/>	Provide the name and worksite location	<input type="checkbox"/>
Workers and equipment are clear of the Danger Zone	<input type="checkbox"/>	Workers and equipment are clear of the Danger Zone	<input type="checkbox"/>	Workers and equipment are clear of the Danger Zone	<input type="checkbox"/>
Provide protection number	<input type="checkbox"/>	Provide protection number	<input type="checkbox"/>	Provide protection number	<input type="checkbox"/>
ASB suspended at	<input type="text"/> hr	ASB suspended at	<input type="text"/> hr	ASB suspended at	<input type="text"/> hr

7. Re-establish ASB assurances

The worksite location is identical	<input type="checkbox"/>	The worksite location is identical	<input type="checkbox"/>	The worksite location is identical	<input type="checkbox"/>
All points of entry into the affected portion of track are protected and blocking facilities applied	<input type="checkbox"/>	All points of entry into the affected portion of track are protected and blocking facilities applied	<input type="checkbox"/>	All points of entry into the affected portion of track are protected and blocking facilities applied	<input type="checkbox"/>
The last rail traffic to pass the protection was	<input type="text"/> rail traffic ID	The last rail traffic to pass the protection was	<input type="text"/> rail traffic ID	The last rail traffic to pass the protection was	<input type="text"/> rail traffic ID
The last known location of rail traffic is	<input type="text"/> location	The last known location of rail traffic is	<input type="text"/> location	The last known location of rail traffic is	<input type="text"/> location
There is no approaching rail traffic between the protection and the worksite	<input type="checkbox"/>	There is no approaching rail traffic between the protection and the worksite	<input type="checkbox"/>	There is no approaching rail traffic between the protection and the worksite	<input type="checkbox"/>
ASB re-established at	<input type="text"/> hr	ASB re-established at	<input type="text"/> hr	ASB re-established at	<input type="text"/> hr
Protection Number	<input type="text"/>	Protection Number	<input type="text"/>	Protection Number	<input type="text"/>

ASB Worksite Protection for Albion Park Routine Network Maintenance Activities

INSTRUCTIONS:

1. Workers enter the rail corridor via 100 102.940 D Access Gate
2. Protection Officer briefs workers about the worksite protection arrangements.
3. Protection Officer contacts the Signaller at South Coast Panel (02) 4223 5766 to request ASB.
4. After ASB has been authorized. start work within the limits of the nominated worksite location.
5. After work is complete, workers move to a safe place.
6. Protection Officer contacts the Signaller at South Coast Panel to end ASB.
7. All workers egress the rail corridor via 100 103.419 U Access Gate

ADDITIONAL DETAILSSuspending ASB

If the ASB is required to be suspended, the Protection Officer must ensure all workers and equipment are clear of the Danger Zone and are in a safe place before suspending the ASB.

IMAGES:

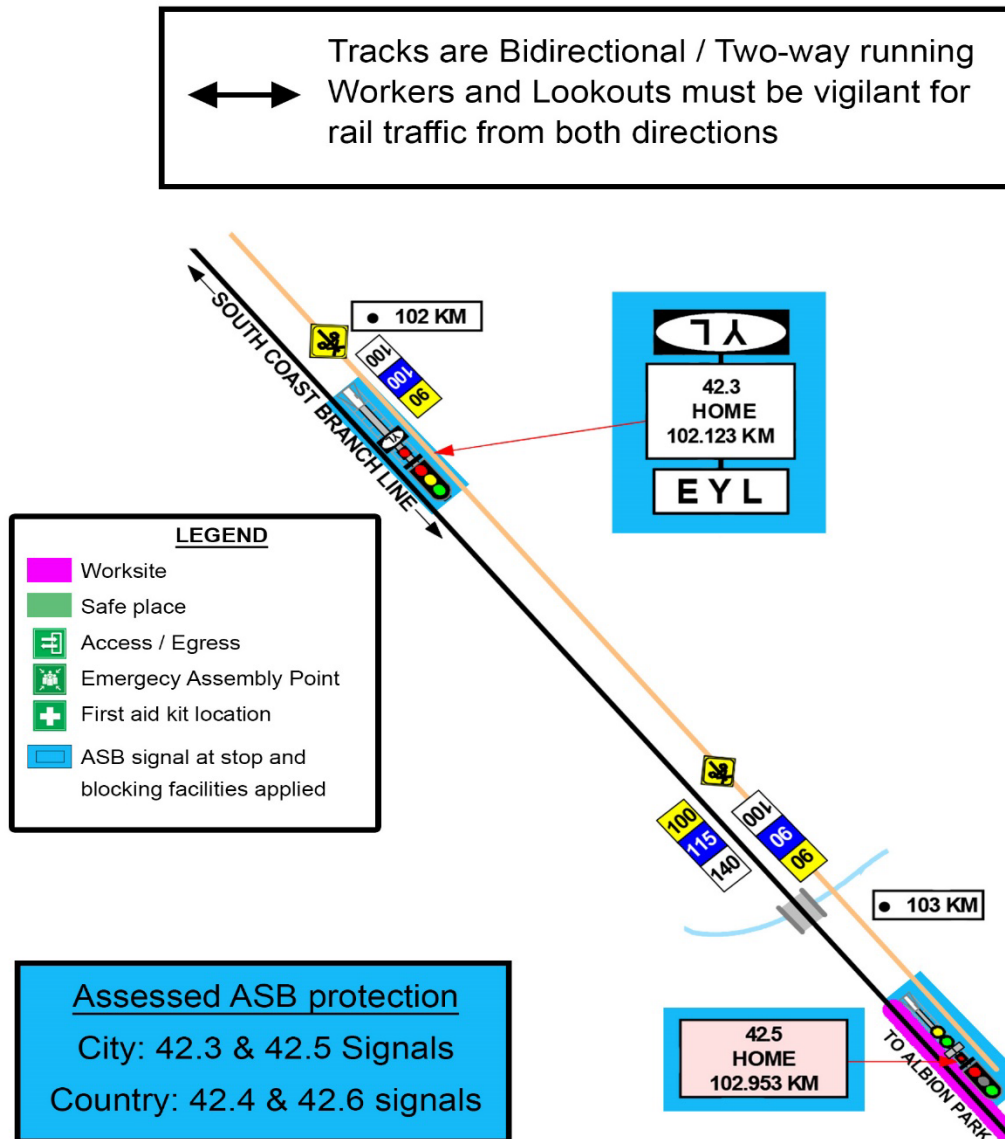
Image 1: Access gate 100 102.940 D off Burroo street.



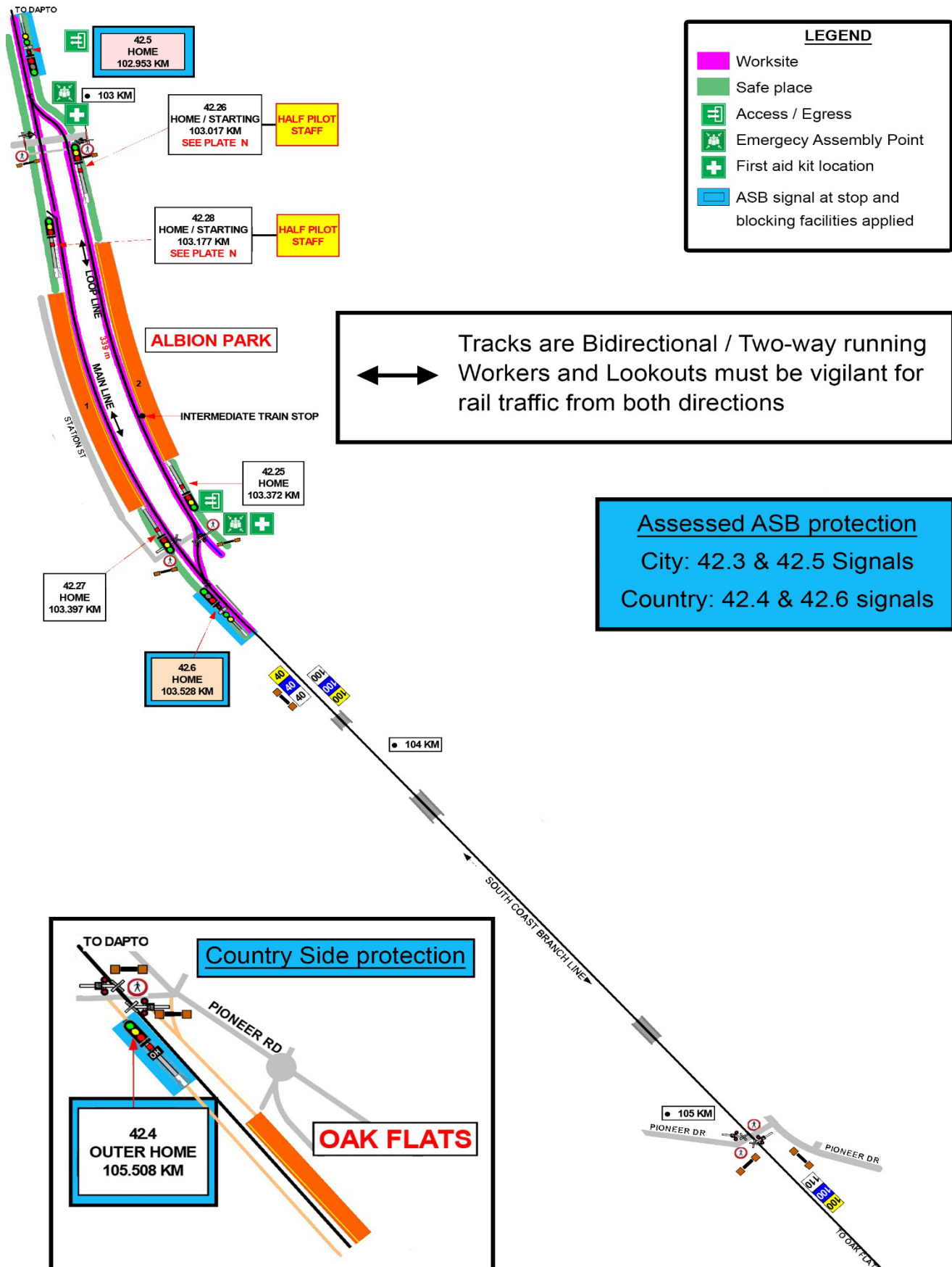
Image 3: Access gate 100 103.419 U on Princes Highway (through Commuter carpark).

ASB Worksite Protection for Albion Park Routine Network Maintenance Activities

Diagram



ASB Worksite Protection for Albion Park Routine Network Maintenance Activities





Protection Officer's diary

[illegible]