

Safe Work Instruction

Worksite Protection for Waterfall/ Stabling Yard Routine Network Maintenance Activities



DOCUMENT NO.	D2023/10126
WORK DESCRIPTION	Routine network maintenance activities – Waterfall – Lookout Working (moving worksite)
WPP Number	CS22B 10254
SCOPE:	<p>This SWI is applicable for the worksite protection arrangements using lookout working concerning routine network maintenance, defect management and repair of assets within the limits specified below and in the attached plan.</p> <p>Work activities include:</p> <ul style="list-style-type: none"> Routine preventative and corrective work such as inspections and maintenance as appropriate for the type of protection being applied as part of this plan.
AUTHORISATIONS:	<p>Protection Officer: Protection Officer Level 1 or higher</p> <p>Lookout: Engineering Hand signaller Level 1 or higher or Protection Officer Level 1 or higher.</p>
SAFETY CONTROLS – Lookout Working arrangements:	<p>The nominated worksite location for Lookout working includes All Tracks within Waterfall Yard limits between WL 3 Signal and WL 93 U Signal.</p> <p>The nominated worksite location for Lookout Working is a moving worksite, where workers are working along the track within the limits of the nominated worksite location up to the where the Lookout is established.</p> <p>As work moves along the track, the Protection Officer must assess the new location and:</p> <ul style="list-style-type: none"> Establish Lookouts as required to watch for approaching rail traffic from all entry points Designate and instruct which safe places the workers are to use as the work is completed along the work route within the worksite limits.
PRESTART REQUIREMENTS:	<p>Protection Officer assessment checklist must be completed before instructions in this SWI are followed.</p> <p>Tools and equipment required:</p> <ul style="list-style-type: none"> Protection Officer requires a phone to contact the Signaller. Lookouts require a high-visibility arm sleeve and a whistle / horn.
FURTHER INFORMATION:	<p><i>NWT 300 Planning work in the Rail Corridor</i></p> <p><i>NWT 310 Lookout Working</i></p> <p><i>NGE 200 Walking in the Danger Zone</i></p> <p><i>NPR 711 Using Lookouts</i></p> <p><i>NPR 751 Calculating Minimum Warning Time</i></p> <p><i>NPR 712 Protecting work from rail traffic on adjacent lines</i></p> <p><i>Lookout Working prohibited locations register.</i></p> <p><i>Lookout Working Prohibited Location Register Mortdale Yard Site Induction</i></p> <p><i>NLA 410 Sutherland to Wollongong</i></p> <p><i>NLA 412 Waterfall</i></p>

Safe Work Instruction**Worksite Protection for Waterfall/ Stabling Yard Routine Network
Maintenance Activities****Protection Officer assessment checklist**

Protection Officer name:		Yes <i>(Tick if Yes)</i>
This document has not expired 12 months beyond the issue date.		
SWI details and protection arrangements have been reviewed and validated for the assessed worksite location, including: <ul style="list-style-type: none"> • On-site safety assessment has been completed for relevancy of works being undertaken • The required protection details, environment and tasks are unchanged from the details of this SWI 		
The Protection Officer and Qualified Workers deploying qualifications are current and have practiced in the last 6 months. If not practiced, then a Rail Safety Coach must be contacted for guidance.		
Corridor Safety Number	Protection Officer Signature	Date

Warning

If an above item does not apply, the Protection Officer must not use this Safe Work Instruction. A new worksite protection plan must be completed in accordance with NRF 014 Worksite Protection Pre-work briefing and NRF 015 Worksite Protection Plan.

Safe Work Instruction

Worksite Protection for Waterfall/ Stabling Yard Routine Network Maintenance Activities



Worksite Protection Pre-work Briefing

Briefing date:

Protection Officer Details

Work location: **Waterfall- All Tracks**

Scope of work: **Routine network maintenance activities**

Worksite protection: **Lookout Working** Refer to Worksite Protection Plan for details

Hazards (e.g., Site specific hazards identified, including physical environment, human errors, plant and equipment)	Controls (to be implemented to eliminate or reduce the risk to the lowest practicable level)	Person responsible for Control
<ul style="list-style-type: none"> Approaching rail traffic 	Lookout working implemented, using lookouts watching for approaching rail traffic. Lookouts must be trained and competent to perform lookout duties. Lookouts must be rotated if performing lookout for extended periods of time Workers to remain within worksite limits as set out in this procedure. Lookouts must be placed as per the protection plan attached to this document. Workers are to stop work and move to a safe place immediately on being warned by the lookouts	Protection Officer & Lookout
<ul style="list-style-type: none"> Adjacent live lines 	Lookouts must provide warning to workers when rail traffic is approaching from the adjacent line in either direction.	Protection Officer & Lookout
<ul style="list-style-type: none"> Two - way running / multiple entry points into worksite 	Lookouts must be placed watching each direction before work starts. Lookouts are to warn workers of approaching rail traffic, including rail traffic entering, stabling or travelling within the worksite. Workers are to stop work and move to a safe place once warned.	Protection Officer & Lookout
Obstruction to Minimum Sighting Distance	Lookouts must provide warning to the workers whenever their line of sight is obstructed by passing rail traffic. Workers must stop work and move to a safe place and reassess positioning and method	Protection Officer & Lookout
Adjoining/Surrounding Worksites	Lookouts must have two independent audible warning devices that can be heard by workers over any noise generated by adjoining/surrounding worksites. Lookouts are to provide warning if their line of sight is obstructed by adjoining/surrounding worksites.	Protection Officer & Lookout
Access to / Egress from worksite Slips, trips, falls and hazards carrying equipment	Access and egress points must be agreed prior to entering the danger zone, consideration should be given to ease of access and safest possible entry and exit points. Protection Officer will assess and instruct when it is safe for workers to use <i>NGE 200 Walking in the Danger Zone</i> to move to the worksite or safe place.	All
Mobile phone	Mobile phones use is not permitted in the danger zone unless being used by maintenance staff for critical maintenance communications or recording of defects.	All



Safe Work Instruction

Worksite Protection for Waterfall/ Stabling Yard Routine Network
Maintenance Activities



Workplace Supervisor Details

name contact No. Emergency assembly point: Waterfall Carpark SWMS/SWI Ref #: First Aid kit location: Sydney Trains Vehicle or Waterfall Station First Aider:

Workplace Supervisor Acknowledgement

The Workplace Supervisor acknowledges that all identified WHS and rail safety hazards have the appropriate controls in place to manage and/or eliminate the hazards. Yes [] signature

Participant Acknowledgement

NOTE: Recipients of the briefing are to question the Briefer if they don't understand any part of this briefing.

All workers listed below acknowledge that they:

- 1. have been inducted to the site
2. are free from alcohol and drugs
3. are free from the effects of fatigue
4. hold the applicable and current Rail Safety Worker Authorisation, trade licence and/or induction record e.g. Construction Industry Induction
5. must wear the appropriate Personal Protective Equipment (PPE)
6. have been briefed on the contents of the Worksite Protection Plan
7. have been shown the Worksite Protection Plan diagram
8. understand the kinds and limits of worksite protection in place
9. have been briefed about any new hazards and controls identified during the final site inspection (final site inspection must be conducted immediately before commencing work)

Mark each check box below with a tick [x] if the item applies or a cross [x] if the item does not apply.

- [] have been informed of the requirements of the electrical permit (if required)
[] have been briefed on the SWMS/SWIs/documentated safe work practice for the job
[] have been instructed in the controls recorded in this document and SWMS/SWIs
[] have been made aware of any hazardous materials/substances on site
[] have been briefed on Safety Data Sheets (SDS)
[] have been briefed on the WHS Management plan
[] have been briefed on the hazards of adjoining worksites/processes.

Table with 4 columns: Name, Signature, Time of briefing: hh:mm, Amendment briefing: hh:mm and initial

Safe Work Instruction

Worksite Protection for Waterfall/ Stabling Yard Routine Network Maintenance Activities



Worksite Protection Plan – Lookout Working

Signaller Details

name Sutherland Panel 02 9522 1218

Protection Officer Details

name signature No. RSW or RIW No. designation Planned duration

Workplace Supervisor details:

Type of work:

Worksite Location

On the All Tracks within Waterfall
All tracks within Waterfall includes: UP Illawarra, Down Illawarra, 1-2 Up Siding, Up Refuge Loop, Down Refuge Loop, Up Goods Loop, Sidings No 1-3, Shunting Neck, Per-Way Siding
between WL 3 Signal and WL 93 U Signal

Worksite Assessment

Has the Lookout Working Prohibited Locations Register been consulted? Yes

Warning method

Whistle/Horn Voice/Touch

Minimum Warning Time Calculations

Maximum track speed 115 km/h
Number of Lookouts used 2 Position of Lookouts 36+334 km to 39+200 km
Number of additional Lookouts* used 0 Position of Lookouts km to km

Note - Lookouts are relocated to positions within these KMs as workers move along the worksite.

Table with 5 columns: See Time (S), Move Time (M), Safe Time (S+M+10 sec = MWT), Track speed, Minimum Sighting Distance as calculated. Rows show calculations for speeds from 115 km/h down to 25 km/h.

Note – Additional MWT calculations can be recorded in the Protection Officer's Diary.

Where are the safe places identified for the Lookouts and the workers?

Lookouts: Up and Down cess, Wide 6 feet, behind fixed structures, designated walkways, and Platform behind yellow Line
Workers: Up and Down cess, Wide 6 feet, behind fixed structures, designated walkways, and Platform behind yellow Line

Ensure the workers have been briefed about these work details Yes

Diagrams, notes, and detailed instructions are over the next pages. These are to be read and followed as part of this worksite protection plan for Lookout Working.

Worksite Protection for Waterfall/ Stabling Yard Routine Network Maintenance Activities

INSTRUCTIONS:

1. Access via any access gate along the worksite.
2. Protection Officer briefs workers about the worksite protection arrangements.
3. Protection Officer contacts **Sutherland Panel** to inform the Signaller of the use of Lookout Working on **All Tracks** between **WL 3 Signal** and **WL 93 U Signal**.
4. Establish lookouts at designated locations for works.
5. Workers start work up to designated locations.
6. Workers move to safe places.
7. Recall Lookouts.
8. Re-establish the Lookouts at the next designated locations.
9. Repeats steps 4-8 until the work is complete.
10. Workers move to a safe place.
11. Recall Lookouts.
12. Exit via any access gate along the worksite.
13. Protection Officer contacts Sutherland Panel to end Lookout Working.

ADDITIONAL DETAILS

Obstruction to Minimum Sighting Distance

Stabled rail traffic or terminating trains may obstruct the Lookouts minimum sighting distance requirements. When this hazard is identified, workers must stop work and move to a safe place until the Protection Officer makes an assessment and repositions Lookouts to achieve the required Minimum Sighting Distance.

2-way Running and Multiple entry points

Tracks are to be treated as **bidirectional**. Lookouts are placed to watch for approaching rail traffic coming from both directions and all points on entry into the worksite. Rail traffic movements on other tracks may also obstruct minimum sighting distance requirements. When this is identified, workers must stop work and move to a safe place until the Protection Officer makes an assessment and repositions Lookouts to achieve the required Minimum Sighting Distance.

Hazard area between 37+906kms to cityside Waterfall Station Platform 2

No Lookout working permitted on the Down Illawarra due to no easily reachable safe place. Only highlighted areas in the diagram are to be worked on under this worksite protection plan.

IMAGES

Image 1: View towards city, City Side of Waterfall Station

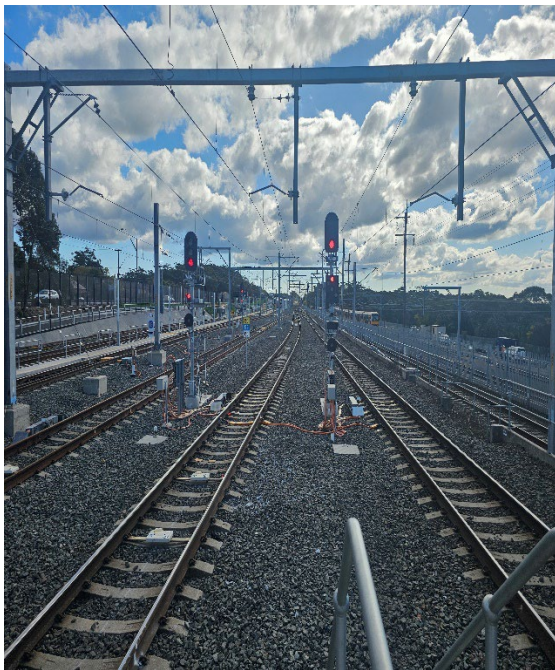


Image 2: View towards city, entry into UP Yard

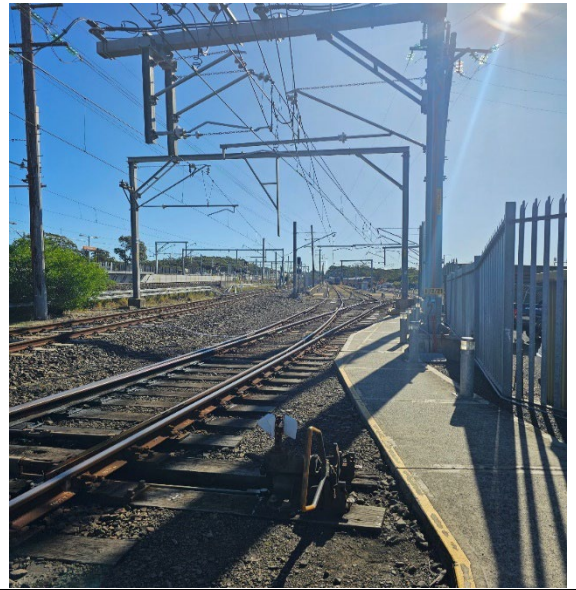


IMAGES

Image 3: View towards city, 1-2 Up Siding, city side Waterfall Station.



Image 4: View towards city, the Stabling Yard



IMAGES

Image 5: View towards country, country side Waterfall Station



Image 6: View towards country, entry into Up Yard, city side Waterfall Station



IMAGES

Image 7: View towards the country, city side Waterfall Station



Image 8: View towards the city, city side of Waterfall Station



Safe Work Instruction

Worksite Protection for Waterfall/ Stabling Yard Routine Network Maintenance Activities



Diagram 1

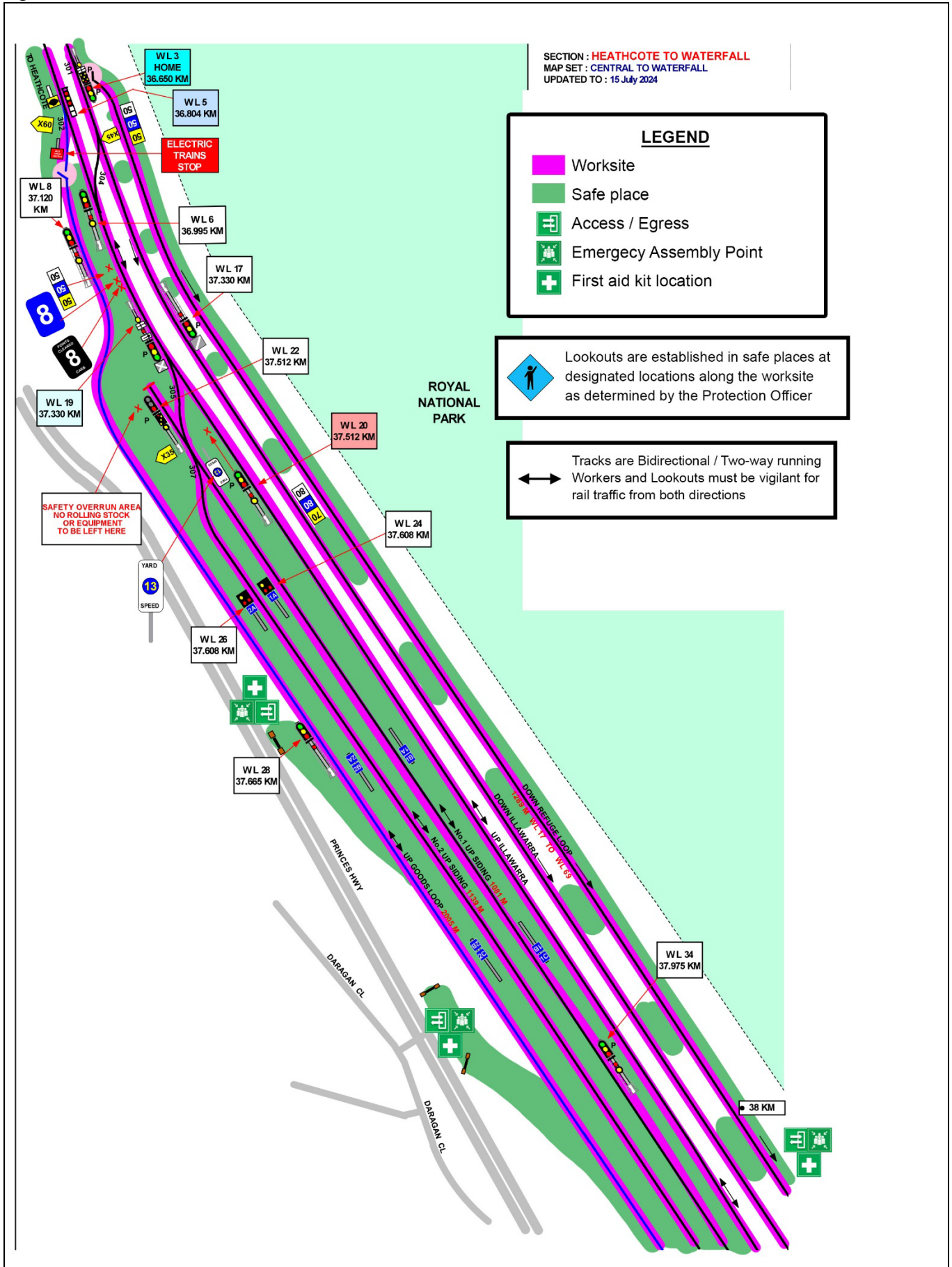


Diagram 2

