

DOCUMENT NO.	D2021/29551
WORK DESCRIPTION	Routine network maintenance activities – ESR (lookout working)
WPP Number	CE6B 10444
SCOPE:	<p>This SWI is applicable for the worksite protection arrangements using lookout working concerning routine network maintenance, defect management and repair of assets within the limits specified below and in the attached plan.</p> <p>Work activities include:</p> <ul style="list-style-type: none"> Routine preventative and corrective work such as inspections and maintenance as appropriate for the type of protection being applied as part of this plan.
AUTHORISATIONS:	<p>Protection Officer: Protection Officer Level 1 or higher</p> <p>Lookout: Hand signaller Level 1 or higher or Protection Officer Level 1 or higher.</p>
SAFETY CONTROLS: Lookout working arrangements	<p>The nominated worksite location for Lookout Working includes the Up and Down Eastern Suburbs Railway Lines, Up and Down Illawarra Relief Lines, and Up and Down Storage Sidings, Terminal Roads (Bondi Junction, Martin Place and Central between IR2.75 Signal and End of Terminal Line (Bondi Junction)).</p> <p>The nominated worksite location for Lookout Working is a moving worksite, where workers are working along the track within the limits of the nominated worksite location up to the where the Lookout is established.</p> <p>As work moves along the track, the Protection Officer must assess the new location and:</p> <ul style="list-style-type: none"> Establish and/or re-establish Lookouts as required to watch for approaching rail traffic from all entry points Designate and instruct which safe places the workers are to use as the work is completed along the work route within the worksite limits. Make sure workers are not walking in more than 2 person groups. Groups must be space 10m apart. Instruct Lookouts to use warning lights to provide as a safety measure when inside tunnel areas
PRESTART REQUIREMENTS:	<p>Protection Officer Assessment checklist must be completed before instructions in this SWI are followed.</p> <p>Tools and equipment required:</p> <ul style="list-style-type: none"> Protection Officer requires a phone to contact the Signaller. Lookouts require a high-visibility arm sleeve and a whistle/horn.
FURTHER INFORMATION:	<p><i>NWT 300 Planning work in the Rail Corridor</i></p> <p><i>NWT 310 Lookout Working</i></p> <p><i>NPR 711 Using Lookouts</i></p> <p><i>NPR 751 Calculating Minimum Warning Time</i></p> <p><i>NPR 712 Protecting work from rail traffic on adjacent lines</i></p> <p><i>NGE 200 Walking in the Danger Zone</i></p> <p><i>NLA 106 Erskineville to Bondi Junction</i></p> <p><i>Lookout Working Prohibited Locations Register</i></p>

Safe Work Instruction**Lookout Working Worksite Protection for Eastern Suburban Railway Lines
routine network maintenance activities****Protection Officer assessment checklist**

Protection Officer's name:		Yes (Tick if Yes)
This document has not expired 12 months beyond the issue date.		
SWI details and protection arrangements have been reviewed and validated for the assessed worksite location, including: <ul style="list-style-type: none">On-site safety assessment has been completed for relevancy of works being undertakenThe required protection details, environment and tasks are unchanged from the details of this SWI		
The Protection Officer and Qualified Workers deploying qualifications are current and have practiced in the last 6 months. If not practiced, then a Rail Safety Coach must be contacted for guidance.		
Corridor Safety Number	Protection Officer Signature	Date

Warning

If an above item does not apply, the Protection Officer must not use this Safe Work Instruction. A new worksite protection plan must be completed in accordance with NRF 014 Worksite Protection Pre-work briefing and NRF 015 Worksite Protection Plan.

Safe Work Instruction

Lookout Working Worksite Protection for Eastern Suburban Railway Lines routine network maintenance activities



Worksite Protection Pre-work Briefing

Briefing date: / /

Protection Officer details

name signature contact No.

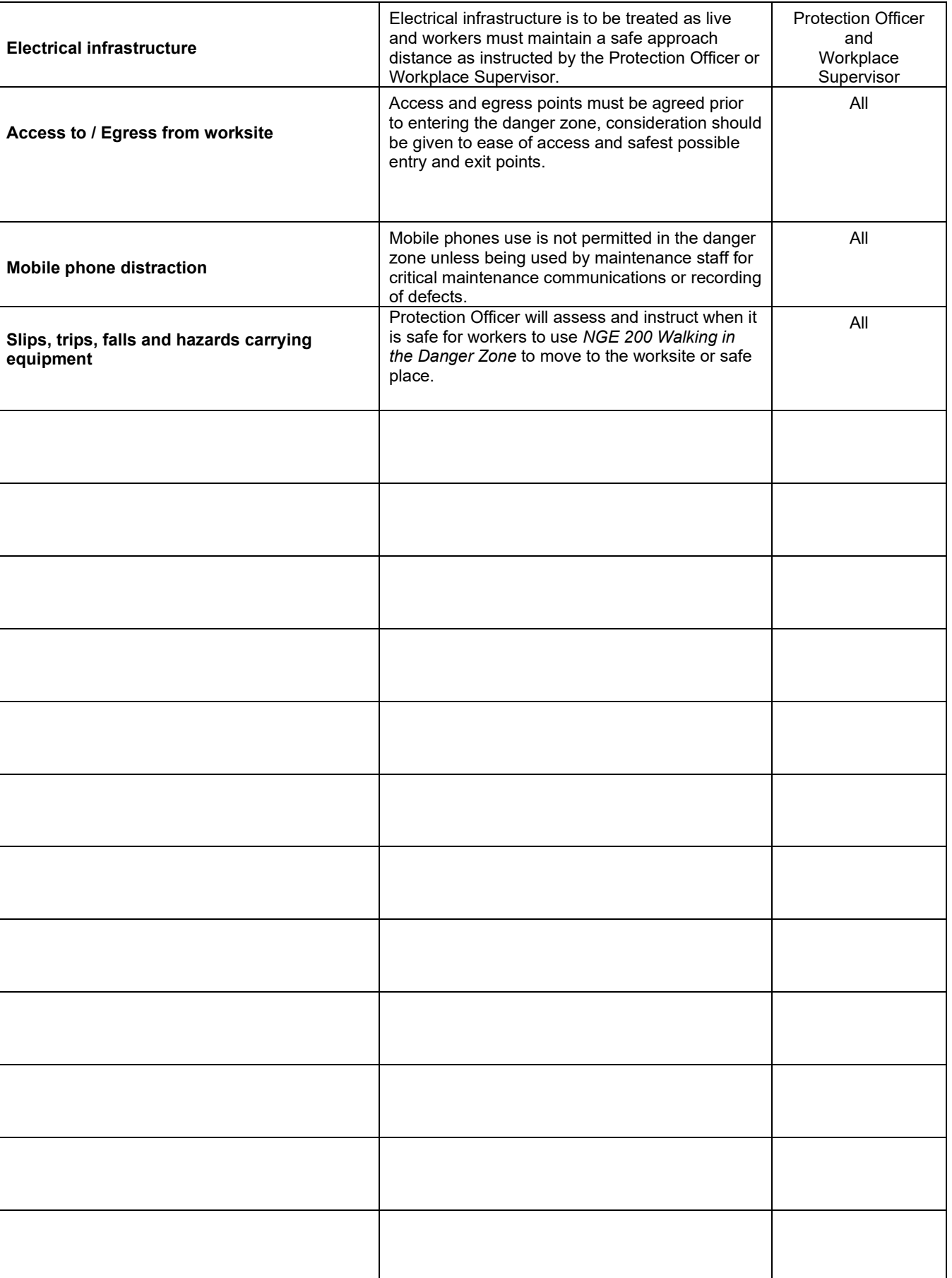
Work location:

Scope of work:

Worksite protection: **Lookout Working** Refer to Worksite Protection Plan for details

Hazards (e.g. Site specific hazards identified, including physical environment, human errors, plant and equipment)	Controls (to be implemented to eliminate or reduce the risk to the lowest practicable level)	Person responsible for Control
Approaching rail traffic	Lookouts must be trained and competent to perform lookout duties. Lookouts must be rotated if performing lookout duties for extended periods of time Workers to remain within worksite limits as set out in this procedure. Lookouts must be placed as per the protection plan attached to this document. Workers are to stop work and move to a safe place immediately on being warned by the lookouts	Protection Officer and Lookout
Adjacent live lines	Lookouts must provide warning to workers when rail traffic is approaching from the adjacent line in either direction.	Protection Officer and Lookout
Two - way running / multiple entry points into worksite	One Lookout placed to watch rail traffic in each direction before work starts. Lookouts are to warn workers of approaching rail traffic, including rail traffic entering or travelling within the worksite. Workers are to stop work and move to a safe place.	Protection Officer and Lookout
Obstruction to Minimum Sighting Distance	Lookouts must provide warning to the workers whenever their line of sight is obstructed by passing rail traffic and/or any other obstructions. Workers must stop work and move to a safe place and reassess positioning and method.	Protection Officer and Lookout
Refuge limitations (Alcoves)	Workers must not walk in more than 2 person groups. Groups must be spaced 10m apart. Protection Officer will designate each individual's refuge safe place to move to when the Lookout provides warning.	Protection Officer
No easily reachable Safe Place within station platform limits	No work or walking through station platform limits. Higher level of protection required to access.	All
Adjoining / surrounding worksites	Lookouts must have two independent audible warning devices that can be heard by workers over any noise generated by adjoining/surrounding worksites. Lookouts must provide warning if their line of sight is obstructed by adjoining/surrounding worksites.	Protection Officer and Lookout

Lookout Working Worksite Protection for Eastern Suburban Railway Lines routine network maintenance activities



Lookout Working Worksite Protection for Eastern Suburban Railway Lines routine network maintenance activities



name		contact No.	
Emergency assembly point:		SWMS/SWI Ref #:	
First aid kit location:		First aider:	

The Workplace Supervisor acknowledges that all identified WHS and rail safety hazards have the appropriate controls in place to manage and/or eliminate the hazards.

Yes ☐

signature

NOTE: Recipients of the briefing are to question the Briefer if they don't understand any part of this briefing.

All workers listed below acknowledge that they:

- | | |
|---|---|
| 1. have been inducted to the site | 6. have been briefed on the contents of the Worksite Protection Plan |
| 2. are free from alcohol and drugs | 7. have been shown the Worksite Protection Plan diagram |
| 3. are free from the effects of fatigue | 8. understand the kinds and limits of worksite protection in place |
| 4. hold the applicable and current Rail Safety Worker Authorisation, trade licence and/or induction record e.g. Construction Industry Induction | 9. have been briefed about any new hazards and controls identified during the final site inspection (<i>final site inspection must be conducted immediately before commencing work</i>) |
| 5. must wear the appropriate Personal Protective Equipment (PPE) | |

Mark each check box below with a tick ☒ if the item applies or a cross ☐ if the item does not apply.

- | | |
|---|---|
| <input type="checkbox"/> have been informed of the requirements of the electrical permit (if required) | <input type="checkbox"/> have been made aware of any hazardous materials/substances on site |
| <input type="checkbox"/> have been briefed on the SWMS/SWIs/documentated safe work practice for the job | <input type="checkbox"/> have been briefed on Safety Data Sheets (SDS) |
| <input type="checkbox"/> have been instructed in the controls recorded in this document and SWMS/SWIs | <input type="checkbox"/> have been briefed on the WHS Management plan |
| | <input type="checkbox"/> have been briefed on the hazards of adjoining worksites/processes. |

[illegible]

Safe Work Instruction

Lookout Working Worksite Protection for Eastern Suburban Railway Lines routine network maintenance activities



Worksite Protection Plan – Lookout Working

Signaller details

	ESR Panel	02 8568 3491
--	-----------	--------------

Protection Officer details

name	signature	contact No.
RSW or RIW No.	designation	Planned duration

Workplace Supervisor details:

Type of work:

Worksite location

On the	Up and Down Eastern Suburbs Railway lines	Up and Down Illawarra Relief lines	Up and Down Storage Sidings,	Terminal roads (Bondi Junction, Martin Place and Central)
between	IR2.75 Signal	and	End of Terminal Line (Bondi Junction)	

Worksite assessment

Has the Lookout Working Prohibited Locations Register been consulted? Yes ☐

Warning method

Whistle/Horn	Voice/Touch
--------------	-------------

Minimum Warning Time Calculations

Maximum track speed

Number of Lookouts used Position of Lookouts to

Number of additional Lookouts* used Position of Lookouts to

Note - Lookouts are relocated to positions within these KMs as workers move along the worksite.

2 sec	+	8 sec	+	10 sec		20 sec	60 km/h	334 metres
7 sec	+	3 sec	+	10 sec	= Minimum Warning Time (MWT)	20 sec	60 km/h	334 metres
2 sec	+	3 sec	+	10 sec		15 sec	45 km/h	188 metres
2 sec	+	3 sec	+	10 sec		15 sec	25km/h	105 metres
See Time (S)		Move Time (M)		Safe Time	(S+M+10 sec = MWT)		Track speed	Minimum Sighting Distance as calculated

Note – Additional MWT calculations can be recorded in the Protection Officer's Diary.

Warning lights used do not exceed a MWT of 20 seconds Yes ☐

Where are the safe places identified for the Lookouts and the workers?

Lookouts:

Workers:

Ensure the workers have been briefed about these work details Yes ☐

Diagrams, notes, and detailed instructions over the next pages. These are to be read and followed as part of this worksite protection plan for Lookout Working.

INSTRUCTIONS:	<ol style="list-style-type: none"> 1. Protection Officer contacts ESR Panel to tell the Signaller of the use of Lookout Working on the Up and Down Eastern Suburbs Line from IR2.75 Signal to Bondi Junction end of terminal line. 2. Workers enter the rail corridor via any station in the ESR Tunnel or via Erskineville Portal, Art Gallery Pad, Edgecliff Pad or Woolahra Cutting. 3. Place Lookouts at designated locations. 4. Workers start work up to the position of the Lookout. 5. Workers move to designated safe places. 6. Re-establish Lookouts at the next designated locations. 7. Works at Woolloomooloo Viaduct requires an additional Lookout to maintain Sighting Distance. 8. Repeats steps 4 - 6 until the work is complete. 9. Move workers into a designated safe place. 10. Move Lookouts into a safe place and egress the worksite at the designated exit location. 11. Protection Officer Ends Lookout Working by contacting East Up and CUG panel to tell the Signaller that work is complete, and all workers and equipment are in a safe place.
ADDITIONAL DETAILS	<p><u>Refuge limitations (Alcoves)</u></p> <p>Alcove safe places have limited space for up to 2 persons. Workers must not walk in more than 2 person groups. Groups must be spaced 10m apart.</p> <p>The Protection Officer must designate which alcoves are to be used by whom when the Lookout warns of approaching rail traffic.</p> <p><u>Lookout Working Prohibited Locations</u></p> <p>There are no safe places in the platform areas. Workers must stop work and move onto the platform when the workers reach the station platforms.</p>
WARNING LIGHTS	<p>Warning lights may be used as a safety measure within tunnel areas in accordance with <i>NLA 106 Erskineville to Bondi Junction</i>.</p>

PHOTOS

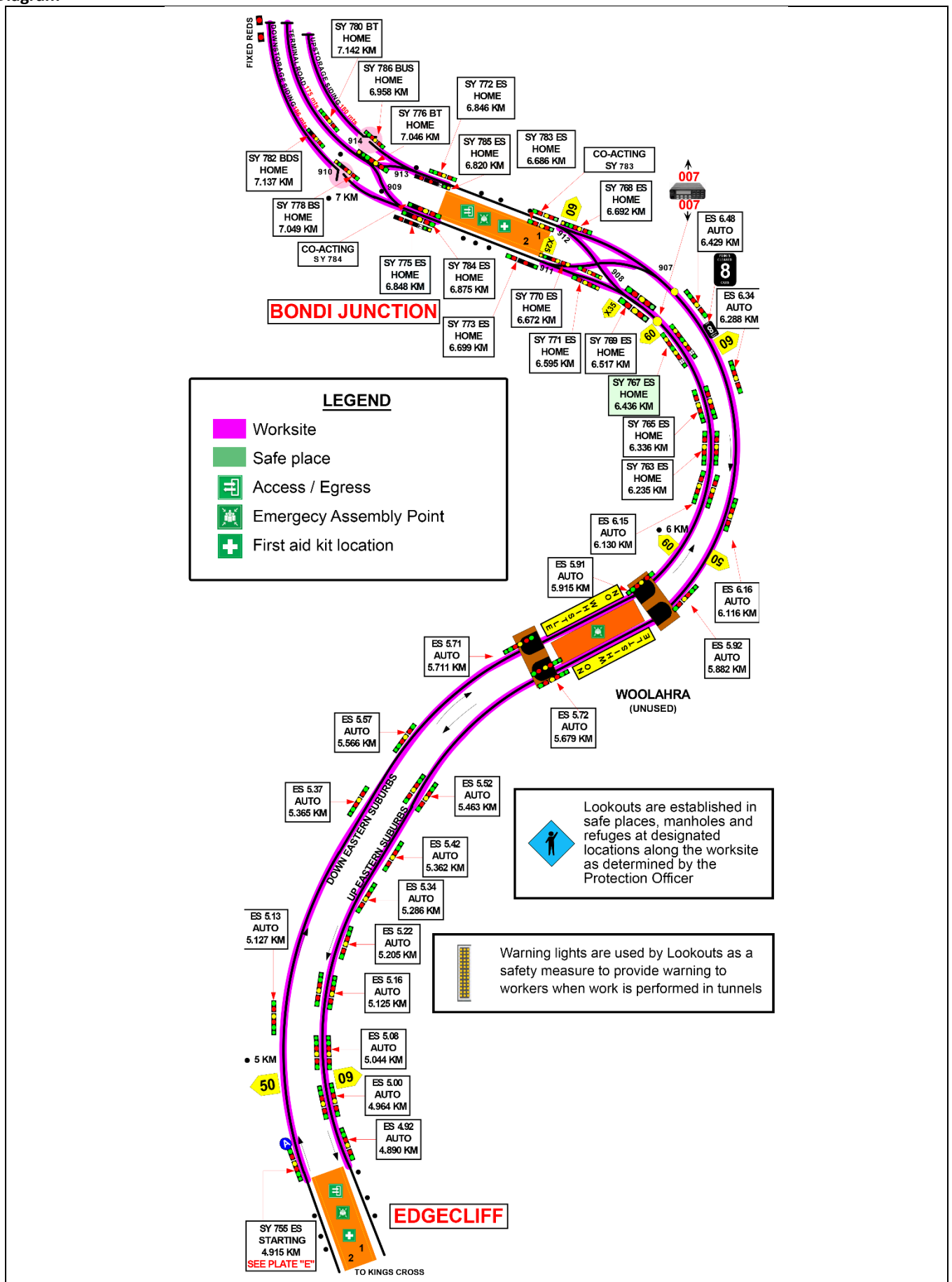


Image 1: Example of warning light at Bondi Junction and access
by station platforms

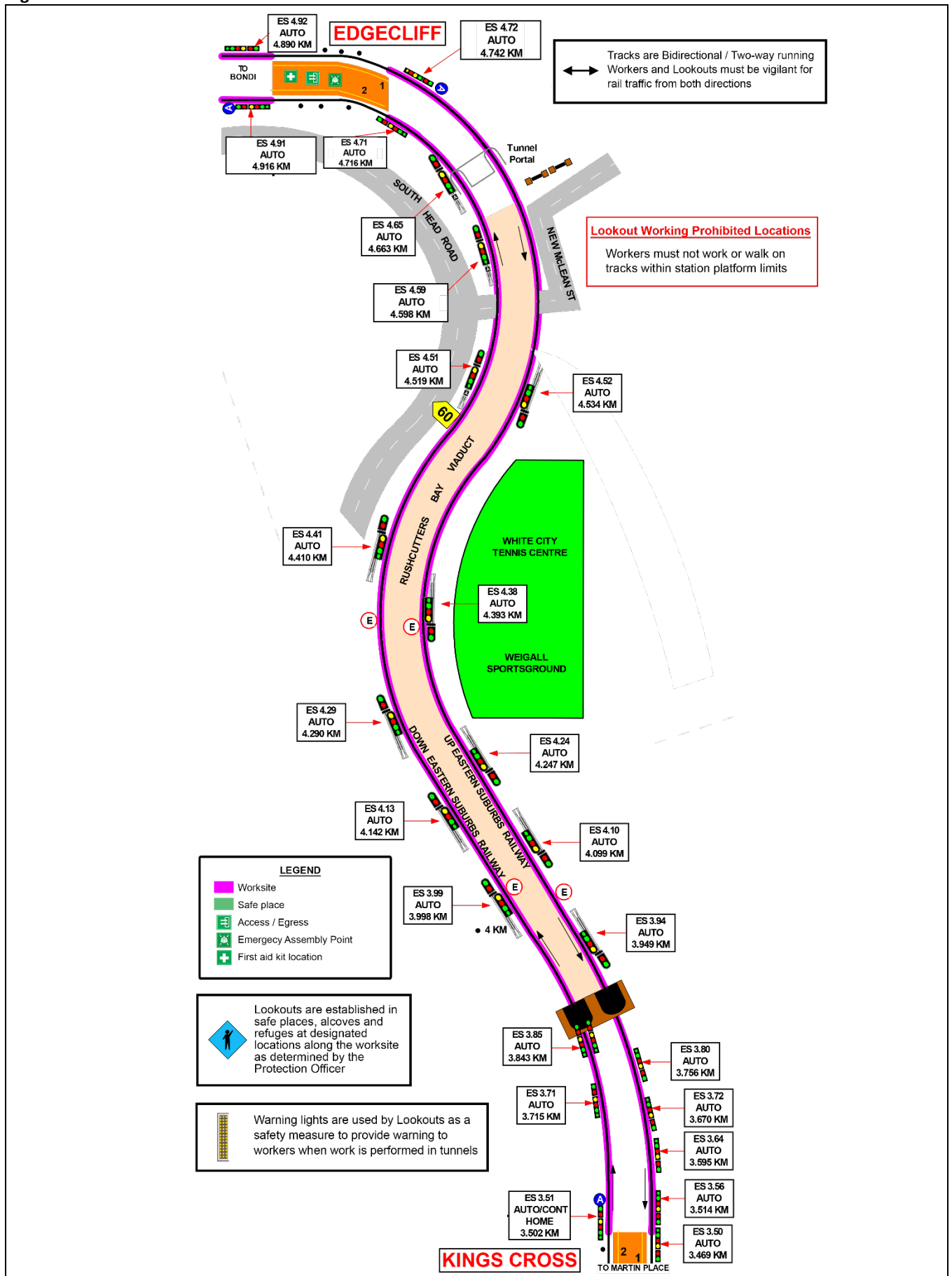


Image 2: Example of a man hole safe places

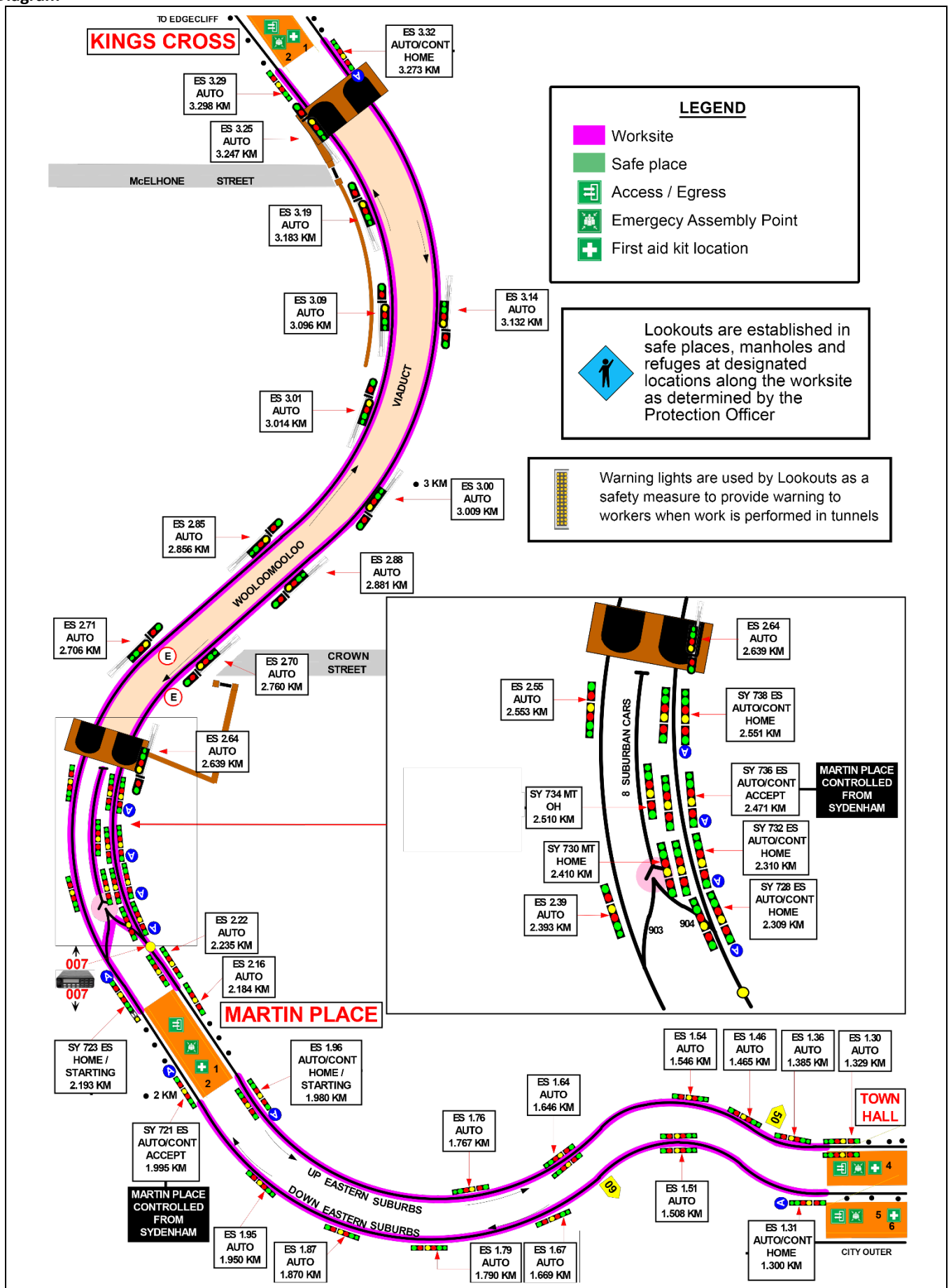
Diagram



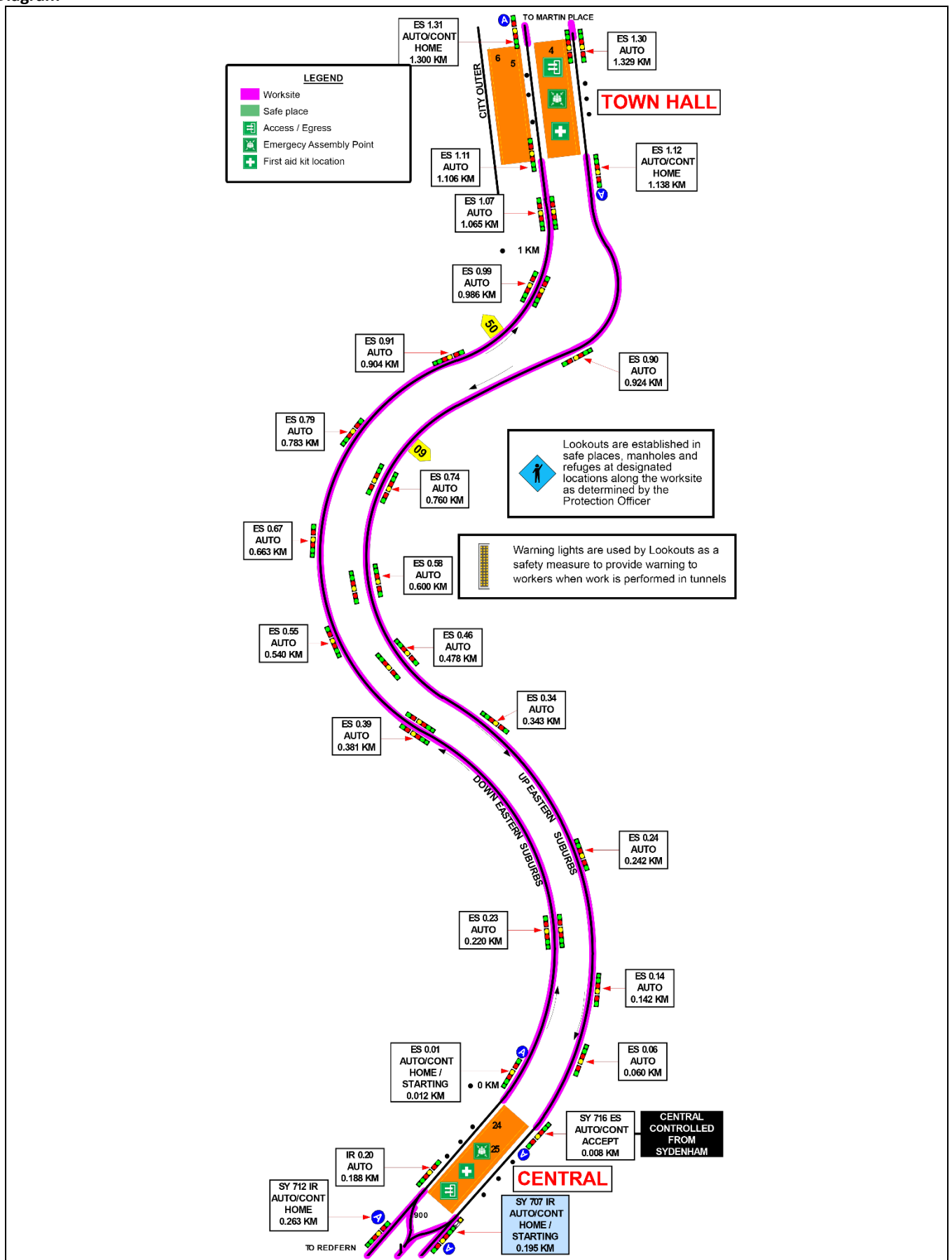
Diagram



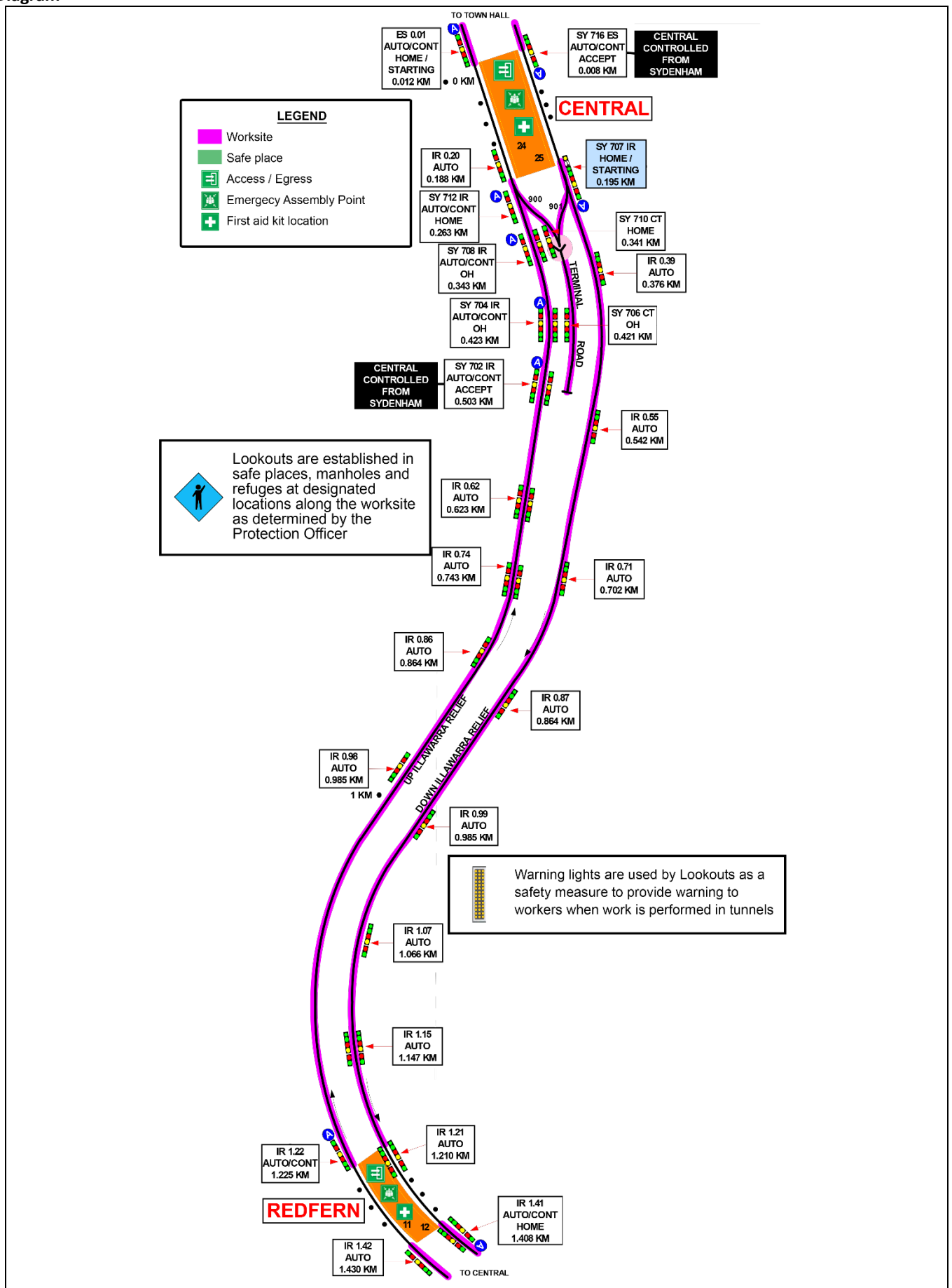
Diagram



Diagram



Diagram



Diagram

