

<b>DOCUMENT NO.</b>	D2021/29551		
<b>WORK DESCRIPTION</b>	Routine network maintenance activities – ESR (lookout working)		
<b>WPP Number</b>	CE6B 10444	<b>SAP Code</b>	RWPP2008
<b>SCOPE:</b>	<p>This SWI is applicable for the worksite protection arrangements using lookout working concerning routine network maintenance, defect management and repair of assets within the limits specified below and in the attached plan.</p> <p>Work activities include:</p> <ul style="list-style-type: none"> <li>Routine preventative and corrective work such as inspections and maintenance as appropriate for the type of protection being applied as part of this plan.</li> </ul>		
<b>AUTHORISATIONS:</b>	<p><b>Protection Officer:</b> Protection Officer Level 1 or higher</p> <p><b>Lookout:</b> Hand signaller Level 1 or higher or Protection Officer Level 1 or higher.</p>		
<b>SAFETY CONTROLS: Lookout working arrangements</b>	<p>The nominated worksite location for Lookout Working includes the <b>Up and Down Eastern Suburbs Railway Lines, Up and Down Illawarra Relief Lines, and Up and Down Storage Sidings, Terminal Roads (Bondi Junction, Martin Place and Central between IR2.75 Signal and End of Terminal Line (Bondi Junction))</b>.</p> <p>The nominated worksite location for Lookout Working is a moving worksite, where workers are working along the track within the limits of the nominated worksite location up to the where the Lookout is established.</p> <p>As work moves along the track, the Protection Officer must assess the new location and:</p> <ul style="list-style-type: none"> <li>Establish and/or re-establish Lookouts as required to watch for approaching rail traffic from all entry points</li> <li>Designate and instruct which safe places the workers are to use as the work is completed along the work route within the worksite limits.</li> <li>Make sure workers are not walking in more than 2 person groups. Groups must be space 10m apart.</li> <li>Instruct Lookouts to use warning lights to provide as a safety measure when inside tunnel areas</li> </ul>		
<b>PRESTART REQUIREMENTS:</b>	<p>Protection Officer Assessment checklist must be completed before instructions in this SWI are followed.</p> <p>Tools and equipment required:</p> <ul style="list-style-type: none"> <li>Protection Officer requires a phone to contact the Signaller.</li> <li>Lookouts require a high-visibility arm sleeve and a whistle/horn.</li> </ul>		
<b>FURTHER INFORMATION:</b>	<p><i>NWT 300 Planning work in the Rail Corridor</i></p> <p><i>NWT 310 Lookout Working</i></p> <p><i>NPR 711 Using Lookouts</i></p> <p><i>NPR 751 Calculating Minimum Warning Time</i></p> <p><i>NPR 712 Protecting work from rail traffic on adjacent lines</i></p> <p><i>NGE 200 Walking in the Danger Zone</i></p> <p><i>NLA 106 Erskineville to Bondi Junction</i></p> <p><i>Lookout Working Prohibited Locations Register</i></p>		

**Safe Work Instruction****Lookout Working Worksite Protection for Eastern Suburban Railway Lines  
routine network maintenance activities****Protection Officer assessment checklist**

<b>Protection Officer's name:</b>		<b>Yes</b> (Tick if Yes)
This document has not expired 12 months beyond the issue date.		
SWI details and protection arrangements have been reviewed and validated for the assessed worksite location, including: <ul style="list-style-type: none"> <li>On-site safety assessment has been completed for relevancy of works being undertaken</li> <li>The required protection details, environment and tasks are unchanged from the details of this SWI</li> </ul>		
The Protection Officer and Qualified Workers deploying qualifications are current and have practiced in the last 6 months. If not practiced, then a Rail Safety Coach must be contacted for guidance.		
<b>Corridor Safety Number</b>	<b>Protection Officer Signature</b>	<b>Date</b>

**Warning**

*If an above item does not apply, the Protection Officer must not use this Safe Work Instruction. A new worksite protection plan must be completed in accordance with NRF 014 Worksite Protection Pre-work briefing and NRF 015 Worksite Protection Plan.*

**Safe Work Instruction**

**Lookout Working Worksite Protection for Eastern Suburban Railway Lines  
routine network maintenance activities**



**Worksite Protection Pre-work Briefing**

Briefing date:  /  /

**Protection Officer Details**

name  signature  contact No.

Work location:

Scope of work:

Worksite protection:  Refer to Worksite Protection Plan for details

Hazards (e.g. Site specific hazards identified, including physical environment, human errors, plant and equipment)	Controls (to be implemented to eliminate or reduce the risk to the lowest practicable level)	Person responsible for Control
<b>Struck by rail traffic</b>	Lookouts must be trained and competent to perform lookout duties. Lookouts must be rotated if performing lookout duties for extended periods of time Workers to remain within worksite limits as set out in this procedure. Lookouts must be placed as per the protection plan attached to this document. Workers are to stop work and move to a safe place immediately on being warned by the lookouts	Protection Officer and Lookout
<b>Adjacent live lines</b>	Lookouts must provide warning to workers when rail traffic is approaching from the adjacent line in either direction.	Protection Officer and Lookout
<b>Two - way running / multiple entry points into worksite</b>	One Lookout placed to watch rail traffic in each direction before work starts. Lookouts are to warn workers of approaching rail traffic, including rail traffic entering or travelling within the worksite. Workers are to stop work and move to a safe place.	Protection Officer and Lookout
<b>Obstruction to Minimum Sighting Distance</b>	Lookouts must provide warning to the workers whenever their line of sight is obstructed by passing rail traffic and/or any other obstructions. Workers must stop work and move to a safe place and reassess positioning and method.	Protection Officer and Lookout
<b>Refuge limitations (Alcoves)</b>	Workers must not walk in more than 2 person groups. Groups must be spaced 10m apart. Protection Officer will designate each individual's refuge safe place to move to when the Lookout provides warning.	Protection Officer
<b>No easily reachable Safe Place within station platform limits</b>	No work or walking through station platform limits. Higher level of protection required to access.	All
<b>Adjoining / surrounding worksites</b>	Lookouts must have two independent audible warning devices that can be heard by workers over any noise generated by adjoining/surrounding worksites. Lookouts must provide warning if their line of sight is obstructed by adjoining/surrounding worksites.	Protection Officer and Lookout





**Safe Work Instruction**

**Lookout Working Worksite Protection for Eastern Suburban Railway Lines routine network maintenance activities**




**Worksite Protection Plan – Lookout Working**

**Signaller details**

	<b>ESR Panel</b>	<b>02 8568 3491</b>
--	------------------	---------------------

**Protection Officer details**

name	signature	contact No.
RSW or RIW No.	designation	Planned duration

Workplace Supervisor details:

Type of work:

**Worksite location**

On the	Up and Down Eastern Suburbs Railway lines	Up and Down Illawarra Relief lines	Up and Down Storage Sidings,	Terminal roads (Bondi Junction, Martin Place and Central)
between	IR2.75 Signal		and	End of Terminal Line (Bondi Junction)

**Worksite assessment**

Has the Lookout Working Prohibited Locations Register been consulted? Yes

**Warning method**

Whistle/Horn	Voice/Touch
--------------	-------------

**Minimum Warning Time Calculations**

Maximum track speed

Number of Lookouts used  Position of Lookouts  to

Number of additional Lookouts\* used  Position of Lookouts  to

**Note** - Lookouts are relocated to positions within these KMs as workers move along the worksite.

2 sec	+	8 sec	+	10 sec	= Minimum Warning Time (MWT)	20 sec	60 km/h	334 metres
7 sec	+	3 sec	+	10 sec		20 sec	60 km/h	334 metres
2 sec	+	3 sec	+	10 sec		15 sec	45 km/h	188 metres
2 sec	+	3 sec	+	10 sec		15 sec	25km/h	105 metres
See Time (S)		Move Time (M)		Safe Time	(S+M+10 sec = MWT)	Track speed		Minimum Sighting Distance as calculated

**Note** – Additional MWT calculations can be recorded in the Protection Officer’s Diary.

Warning lights used do not exceed a MWT of 20 seconds Yes

**Where are the safe places identified for the Lookouts and the workers?**

Lookouts:

Workers:

Ensure the workers have been briefed about these work details Yes

Diagrams, notes, and detailed instructions over the next pages. These are to be read and followed as part of this worksite protection plan for Lookout Working.

<b>INSTRUCTIONS:</b>	<ol style="list-style-type: none"> <li>1. Protection Officer contacts ESR Panel to tell the Signaller of the use of Lookout Working on the <b>Up and Down Eastern Suburbs Line</b> from <b>IR2.75 Signal</b> to <b>Bondi Junction end of terminal line</b>.</li> <li>2. Workers enter the rail corridor via any station in the ESR Tunnel or via Erskineville Portal, Art Gallery Pad, Edgecliff Pad or Woolahra Cutting.</li> <li>3. Place Lookouts at designated locations.</li> <li>4. Workers start work up to the position of the Lookout.</li> <li>5. Workers move to designated safe places.</li> <li>6. Re-establish Lookouts at the next designated locations.</li> <li>7. Works at Woolloomooloo Viaduct requires an additional Lookout to maintain Sighting Distance.</li> <li>8. Repeats steps 4 - 6 until the work is complete.</li> <li>9. Move workers into a designated safe place.</li> <li>10. Move Lookouts into a safe place and egress the worksite at the designated exit location.</li> <li>11. Protection Officer Ends Lookout Working by contacting East Up and CUG panel to tell the Signaller that work is complete, and all workers and equipment are in a safe place.</li> </ol>
<b>ADDITIONAL DETAILS</b>	<p><u>Refuge limitations (Alcoves)</u></p> <p>Alcove safe places have limited space for up to 2 persons. Workers must not walk in more than 2 person groups. Groups must be spaced 10m apart.</p> <p>The Protection Officer must designate which alcoves are to be used by whom when the Lookout warns of approaching rail traffic.</p> <p><u>Lookout Working Prohibited Locations</u></p> <p><b>There are no safe places in the platform areas. Workers must stop work and move onto the platform when the workers reach the station platforms.</b></p>
<b>WARNING LIGHTS</b>	<p>Warning lights may be used as a safety measure within tunnel areas in accordance with <i>NLA 106 Erskineville to Bondi Junction</i>.</p>

PHOTOS

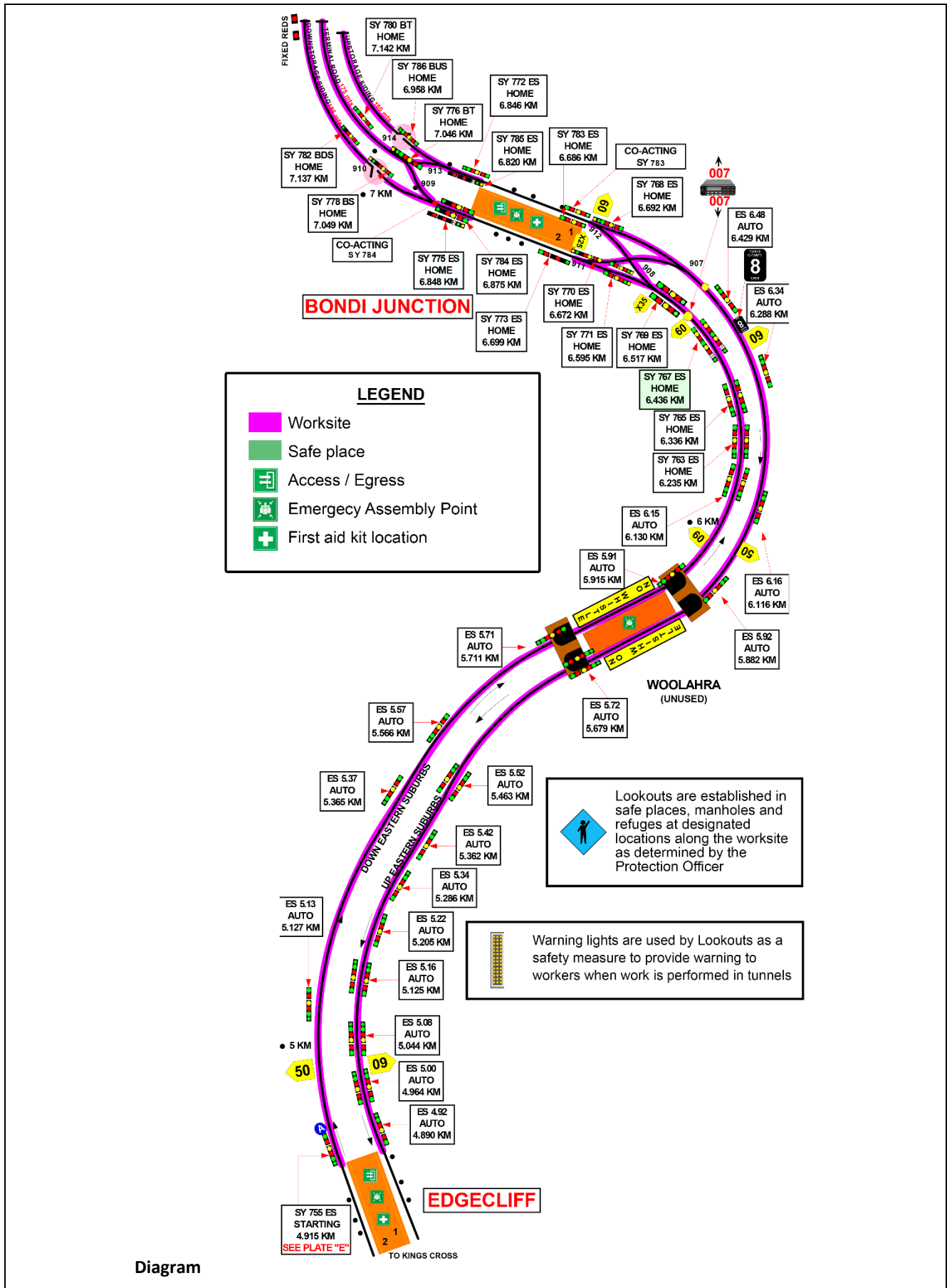


Image 1: Example of warning light at Bondi Junction and access by station platforms



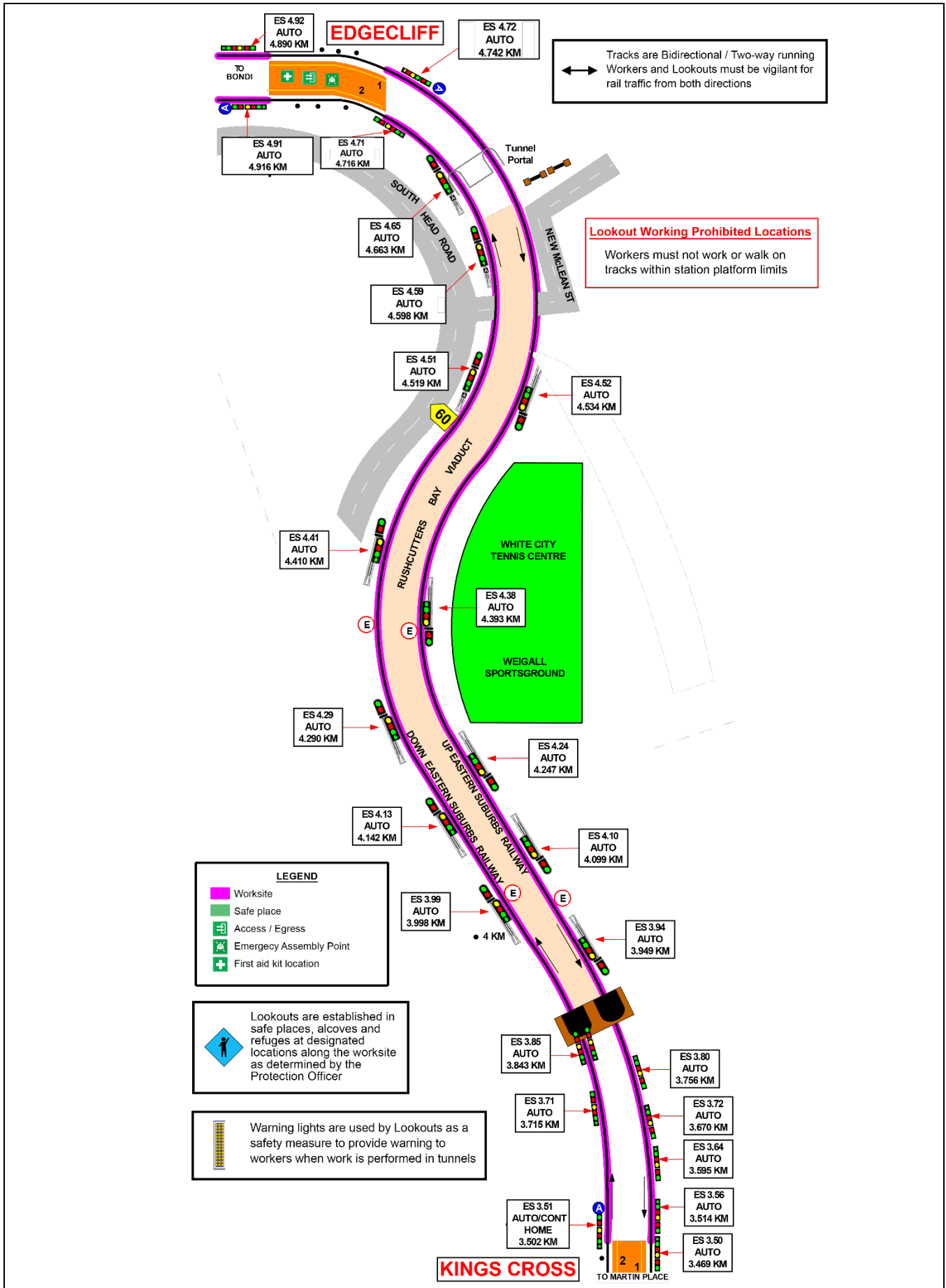
Image 2: Example of a man hole safe places



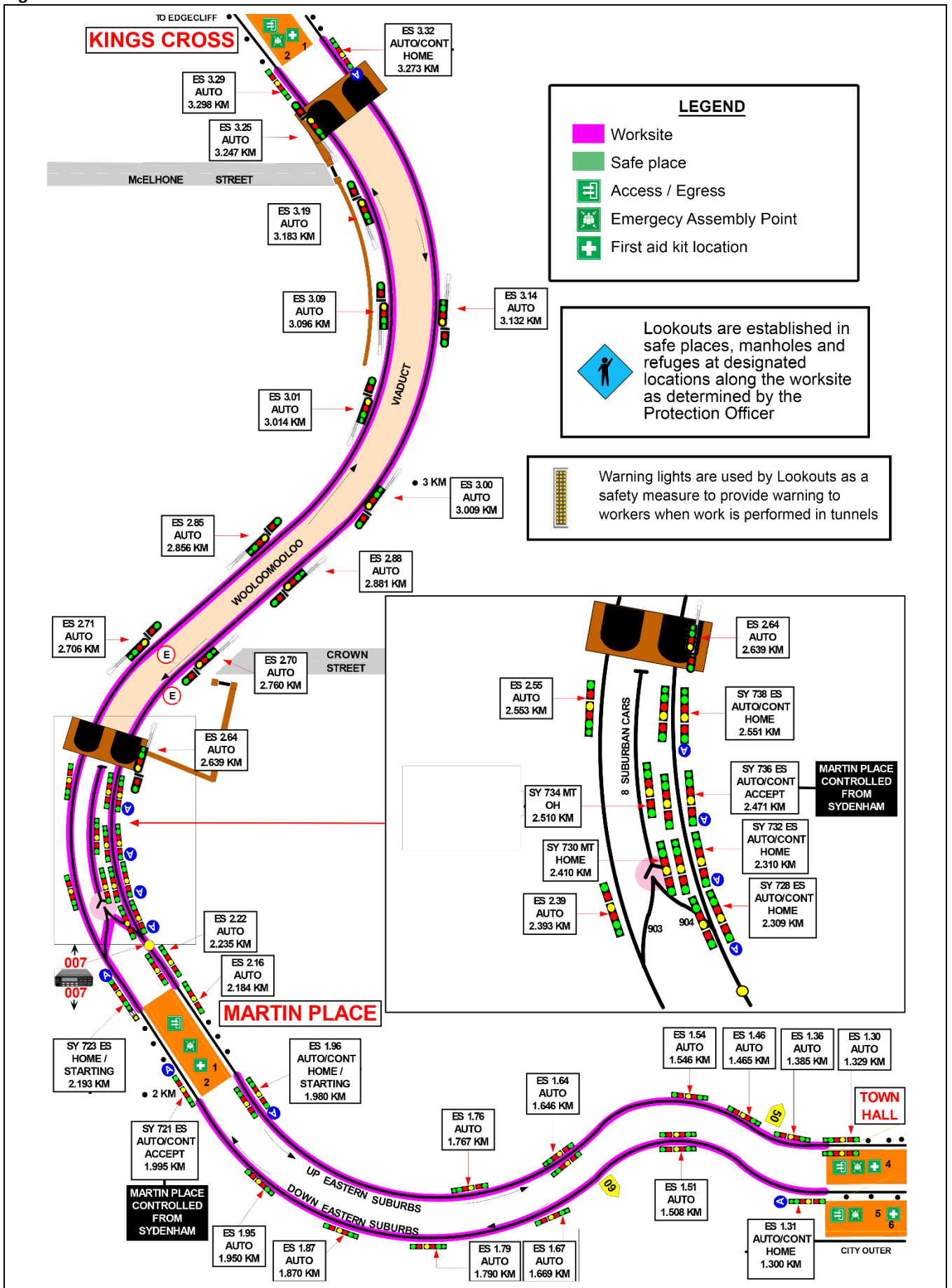


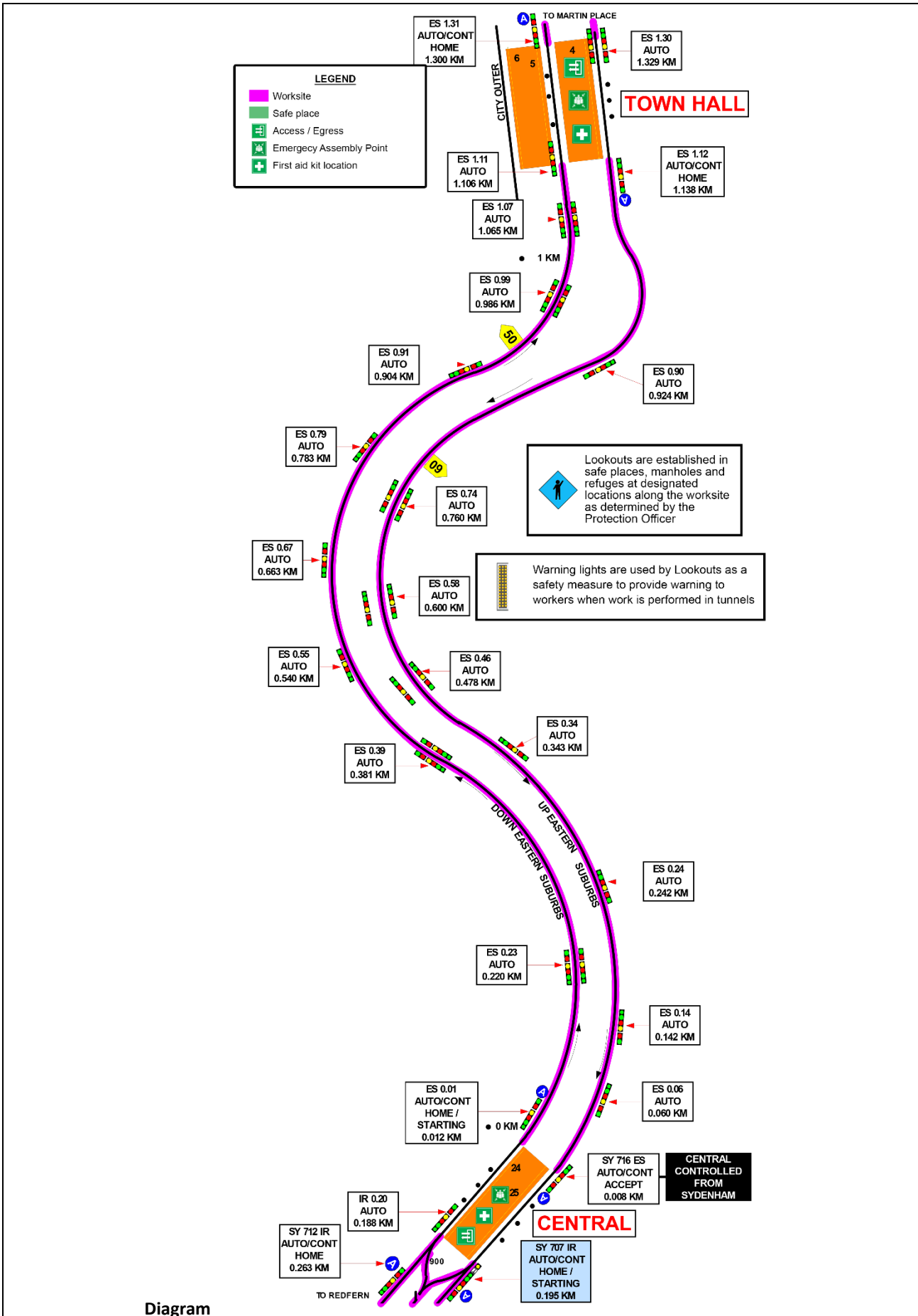
# Safe Work Instruction

## Lookout Working Worksite Protection for Eastern Suburban Railway Lines routine network maintenance activities



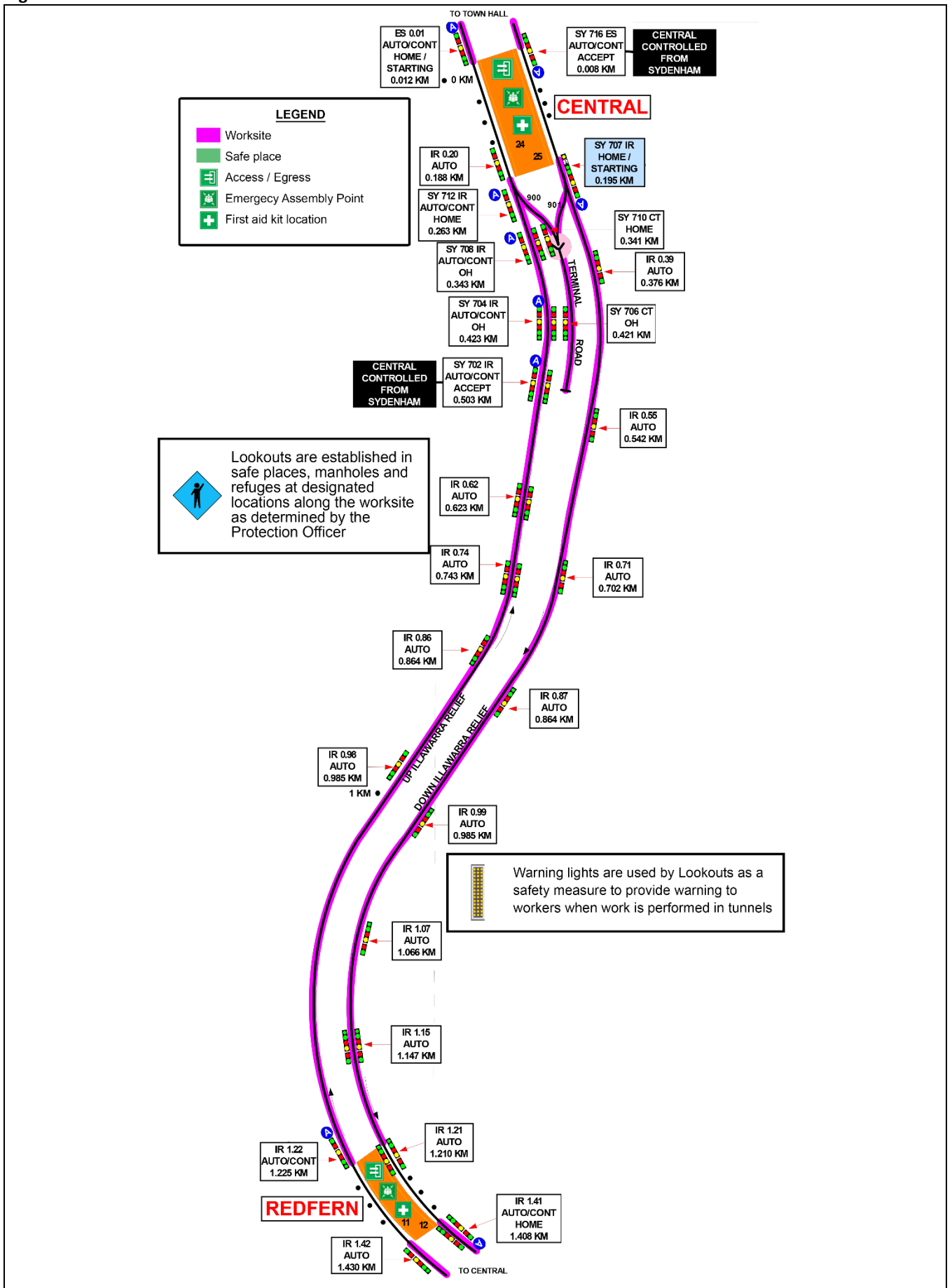
Diagram





Diagram

Diagram



Diagram

