

# DRIVERS ROUTE KNOWLEDGE DIAGRAMS

## SOUTH WEST RAIL LINK (SWRL)

GLENFIELD

EDMONDSON PARK

LEPPINGTON

**Effective Date:** April 2020

**Version:** 4.19

### Explanatory Notes:

Navigate to your area of interest via the station index or by using links created in Adobe bookmarks.

This document is approved for **route knowledge only**.

**Do not use these diagrams for any safety related purpose** without validating the information against a controlled source or in the field.

Information in these diagrams is uncontrolled.

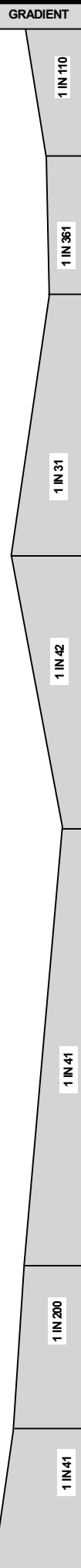
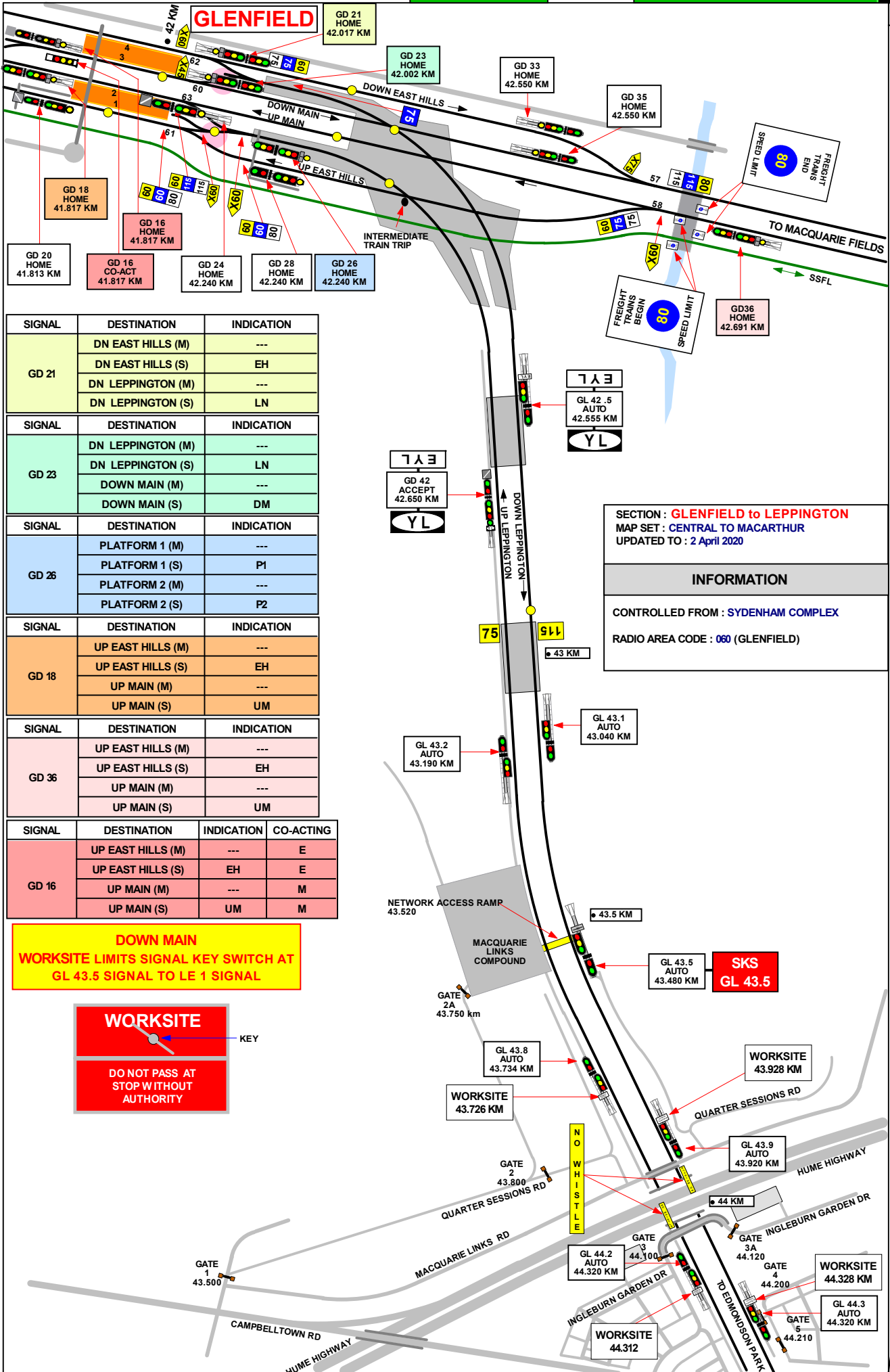
Please report any updates to  
[gjs.support@transport.nsw.gov.au](mailto:gjs.support@transport.nsw.gov.au)



**Copyright:** Sydney Trains

**Ownership:** Geospatial Services,  
Enterprise Asset Systems

**Location:** TRIM Record No.D2015/563



SIGNAL	DESTINATION	INDICATION
GD 21	DN EAST HILLS (M)	---
	DN EAST HILLS (S)	EH
	DN LEPPINGTON (M)	---
	DN LEPPINGTON (S)	LN

SIGNAL	DESTINATION	INDICATION
GD 23	DN LEPPINGTON (M)	---
	DN LEPPINGTON (S)	LN
	DOWN MAIN (M)	---
	DOWN MAIN (S)	DM

SIGNAL	DESTINATION	INDICATION
GD 26	PLATFORM 1 (M)	---
	PLATFORM 1 (S)	P1
	PLATFORM 2 (M)	---
	PLATFORM 2 (S)	P2

SIGNAL	DESTINATION	INDICATION
GD 18	UP EAST HILLS (M)	---
	UP EAST HILLS (S)	EH
	UP MAIN (M)	---
	UP MAIN (S)	UM

SIGNAL	DESTINATION	INDICATION
GD 36	UP EAST HILLS (M)	---
	UP EAST HILLS (S)	EH
	UP MAIN (M)	---
	UP MAIN (S)	UM

SIGNAL	DESTINATION	INDICATION	CO-ACTING
GD 16	UP EAST HILLS (M)	---	E
	UP EAST HILLS (S)	EH	E
	UP MAIN (M)	---	M
	UP MAIN (S)	UM	M

**DOWN MAIN WORKSITE LIMITS SIGNAL KEY SWITCH AT GL 43.5 SIGNAL TO LE 1 SIGNAL**

**WORKSITE**

KEY

DO NOT PASS AT STOP WITHOUT AUTHORITY

**SECTION : GLENFIELD to LEPPINGTON**  
 MAP SET : CENTRAL TO MACARTHUR  
 UPDATED TO : 2 April 2020

**INFORMATION**

CONTROLLED FROM : SYDENHAM COMPLEX

RADIO AREA CODE : 060 (GLENFIELD)

SECTION : GLENFIELD to LEPPINGTON  
MAP SET : CENTRAL TO MACARTHUR  
UPDATED TO : 2 April 2020

GRADIENT

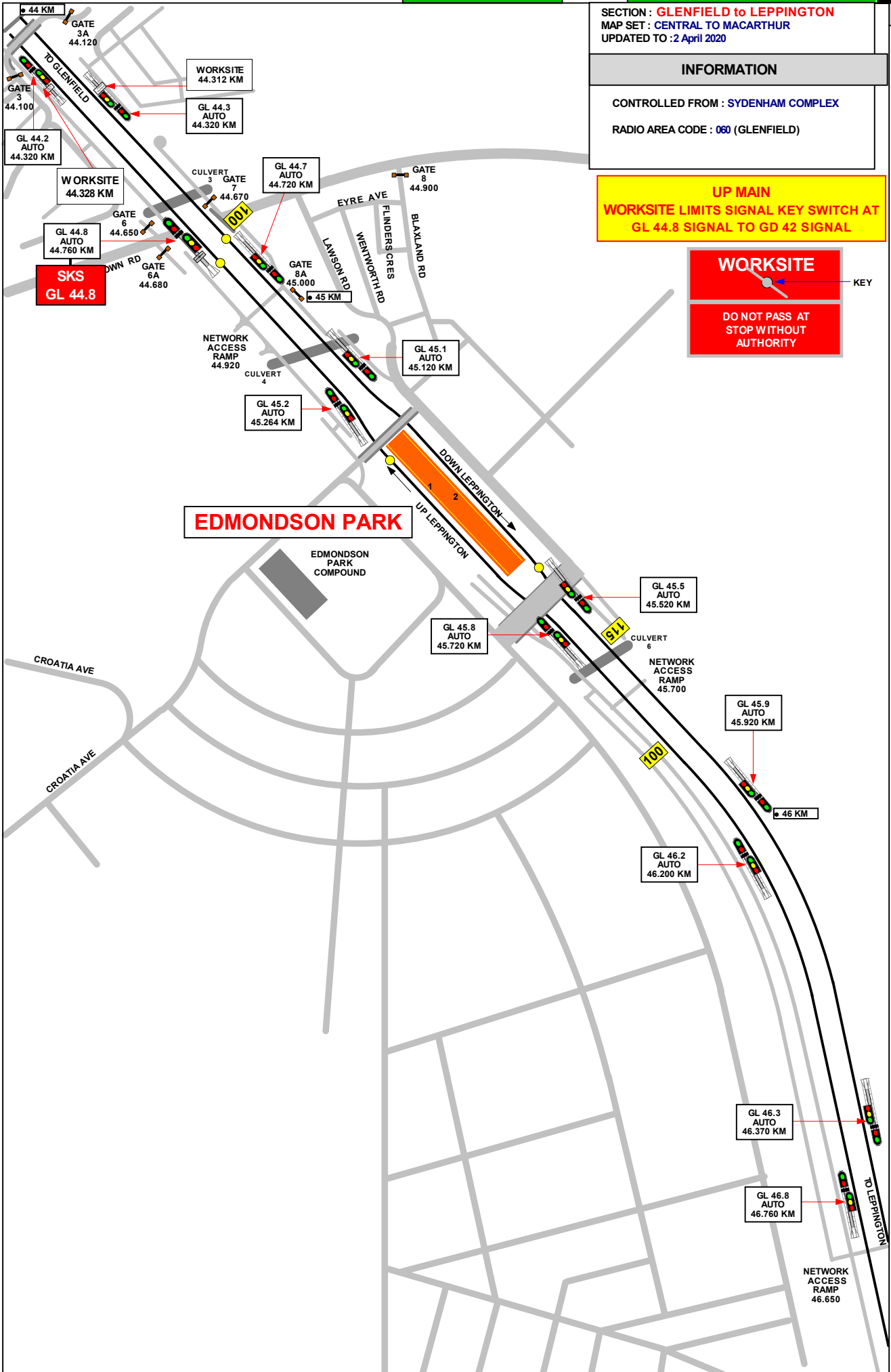
INFORMATION

CONTROLLED FROM : SYDENHAM COMPLEX  
RADIO AREA CODE : 060 (GLENFIELD)

**UP MAIN**  
WORKSITE LIMITS SIGNAL KEY SWITCH AT  
GL 44.8 SIGNAL TO GD 42 SIGNAL

WORKSITE

DO NOT PASS AT  
STOP WITHOUT  
AUTHORITY



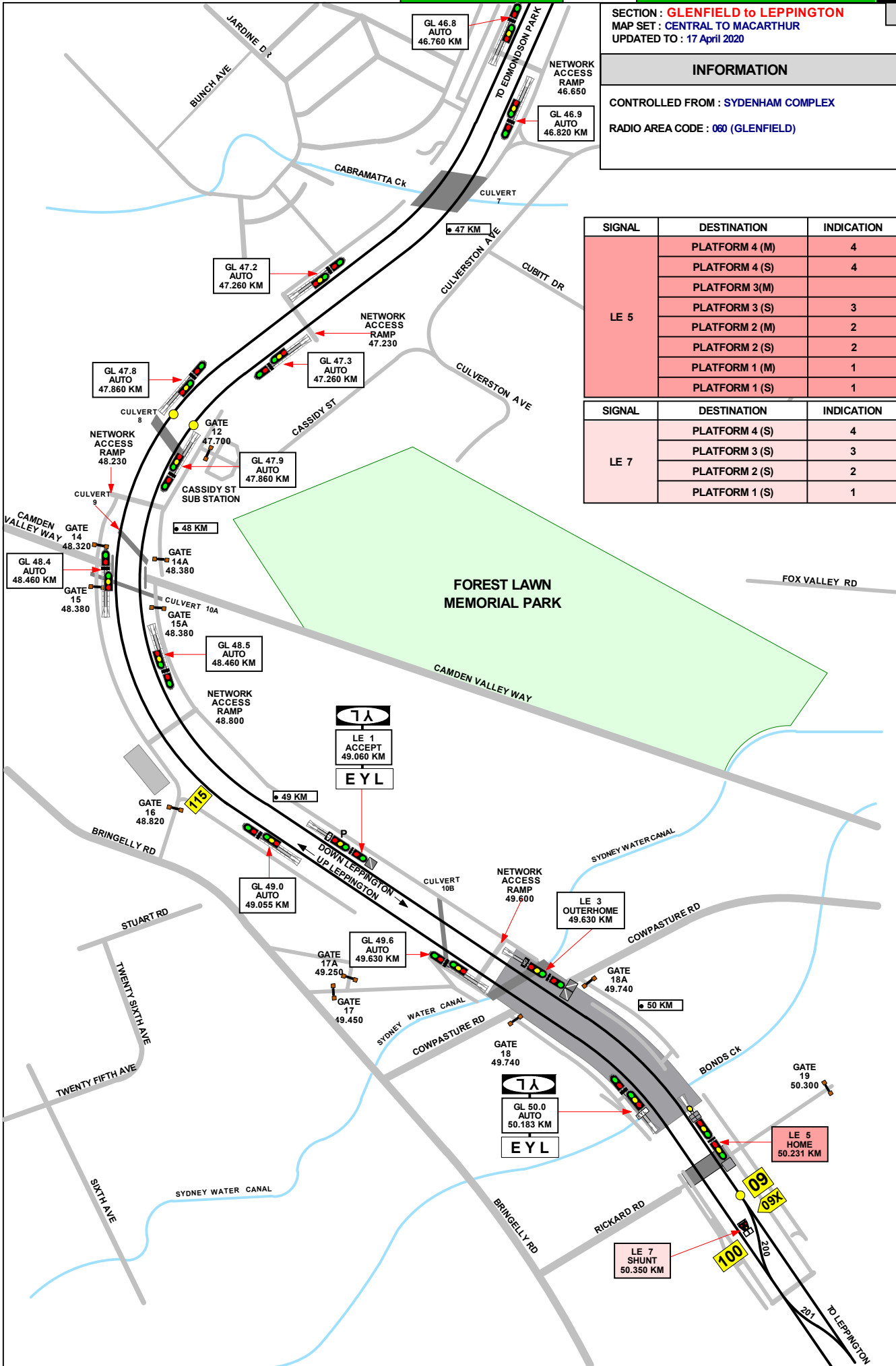
SECTION : **GLENFIELD to LEPPINGTON**  
 MAP SET : **CENTRAL TO MACARTHUR**  
 UPDATED TO : 17 April 2020

GRADIENT

**INFORMATION**

CONTROLLED FROM : **SYDENHAM COMPLEX**  
 RADIO AREA CODE : **060 (GLENFIELD)**

SIGNAL	DESTINATION	INDICATION
LE 5	PLATFORM 4 (M)	4
	PLATFORM 4 (S)	4
	PLATFORM 3 (M)	
	PLATFORM 3 (S)	3
	PLATFORM 2 (M)	2
	PLATFORM 2 (S)	2
LE 7	PLATFORM 1 (M)	1
	PLATFORM 1 (S)	1
	PLATFORM 4 (S)	4
	PLATFORM 3 (S)	3
LE 7	PLATFORM 2 (S)	2
	PLATFORM 1 (S)	1



1 IN 64  
 1 IN 190  
 1 IN 41  
 1 IN 40  
 1 IN 42  
 1 IN 200

SECTION : **GLENFIELD to LEPPINGTON**  
 MAP SET : **CENTRAL TO MACARTHUR**  
 UPDATED TO : 24 October 2017

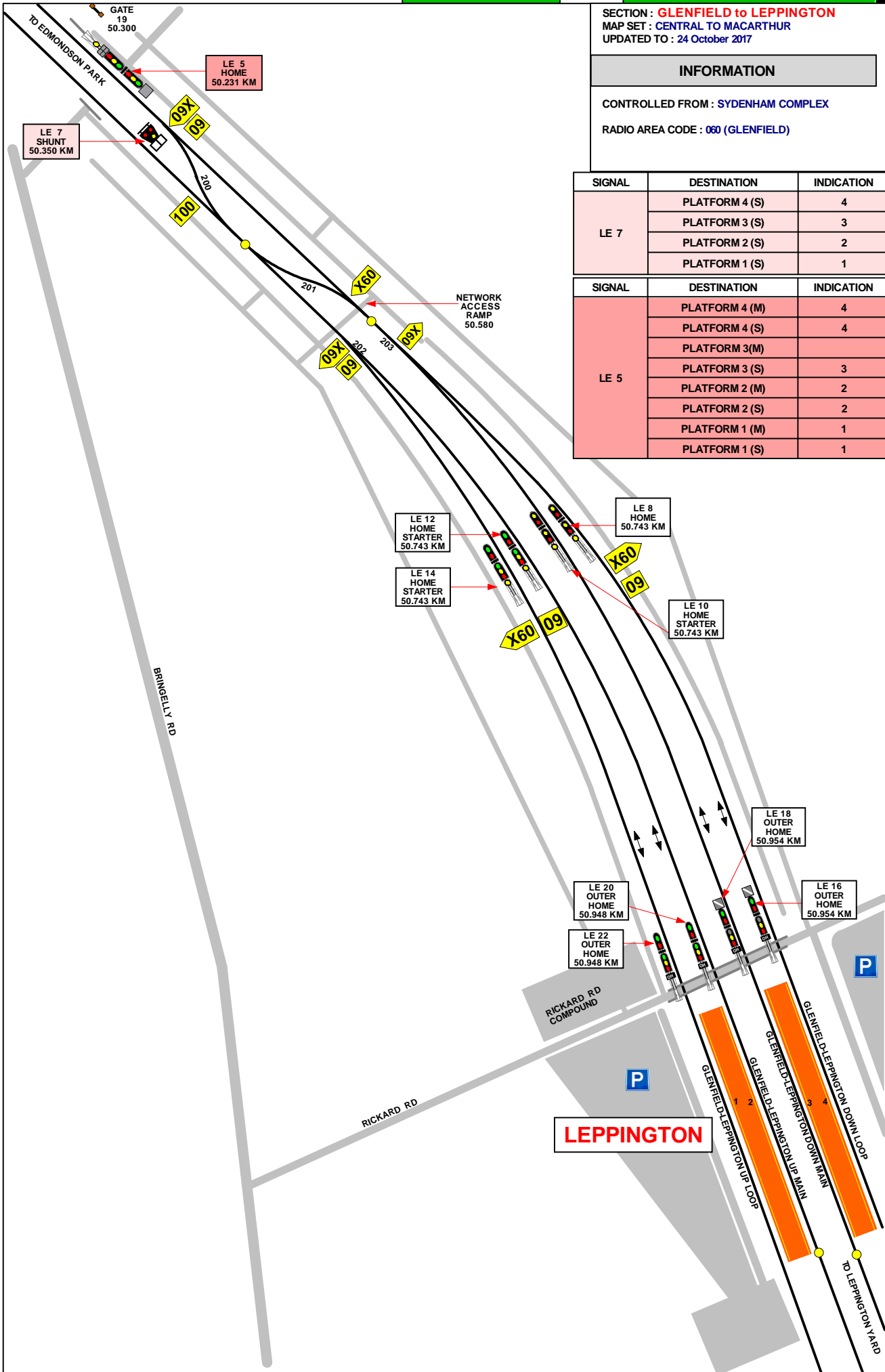
GRADIENT

**INFORMATION**

CONTROLLED FROM : **SYDENHAM COMPLEX**  
 RADIO AREA CODE : **060 (GLENFIELD)**

SIGNAL	DESTINATION	INDICATION
LE 7	PLATFORM 4 (S)	4
	PLATFORM 3 (S)	3
	PLATFORM 2 (S)	2
	PLATFORM 1 (S)	1

SIGNAL	DESTINATION	INDICATION
LE 5	PLATFORM 4 (M)	4
	PLATFORM 4 (S)	4
	PLATFORM 3 (M)	
	PLATFORM 3 (S)	3
	PLATFORM 2 (M)	2
	PLATFORM 2 (S)	2
	PLATFORM 1 (M)	1
	PLATFORM 1 (S)	1



1 IN 200

1 IN 185

1 IN 155

SECTION : **GLENFIELD to LEPPINGTON**  
 MAP SET : **CENTRAL TO MACARTHUR**  
 UPDATED TO : **13 March 2020**

GRADIENT

**INFORMATION**

CONTROLLED FROM : **SYDENHAM COMPLEX**

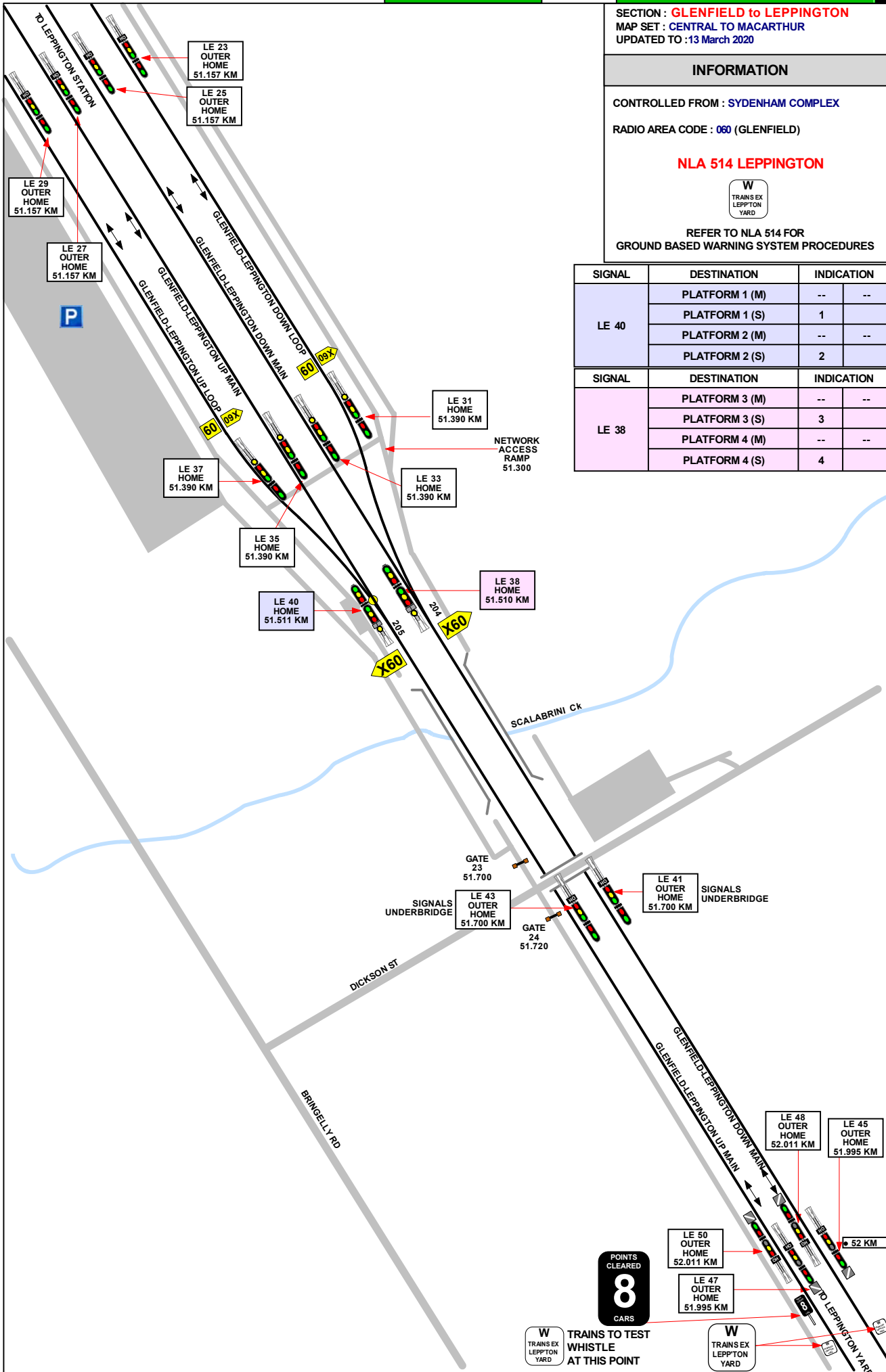
RADIO AREA CODE : **060 (GLENFIELD)**

**NLA 514 LEPPINGTON**



REFER TO NLA 514 FOR  
 GROUND BASED WARNING SYSTEM PROCEDURES

SIGNAL	DESTINATION	INDICATION	
LE 40	PLATFORM 1 (M)	--	--
	PLATFORM 1 (S)	1	
	PLATFORM 2 (M)	--	--
	PLATFORM 2 (S)	2	
SIGNAL	DESTINATION	INDICATION	
LE 38	PLATFORM 3 (M)	--	--
	PLATFORM 3 (S)	3	
	PLATFORM 4 (M)	--	--
	PLATFORM 4 (S)	4	



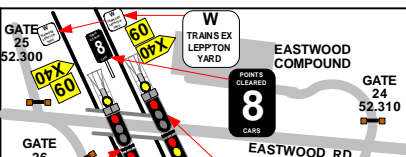
1 IN 155

1 IN 200

POINTS  
 CLEARED  
**8**  
 CARS

W TRAINS EX LEPPINGTON YARD  
 TRAINS TO TEST WHISTLE AT THIS POINT

W TRAINS EX LEPPINGTON YARD



SIGNAL	DESTINATION	INDICATION
LE 51	DOWN MAIN (M)	---
	DOWN MAIN (S)	D
	UP MAIN (M)	---
	UP MAIN (S)	U

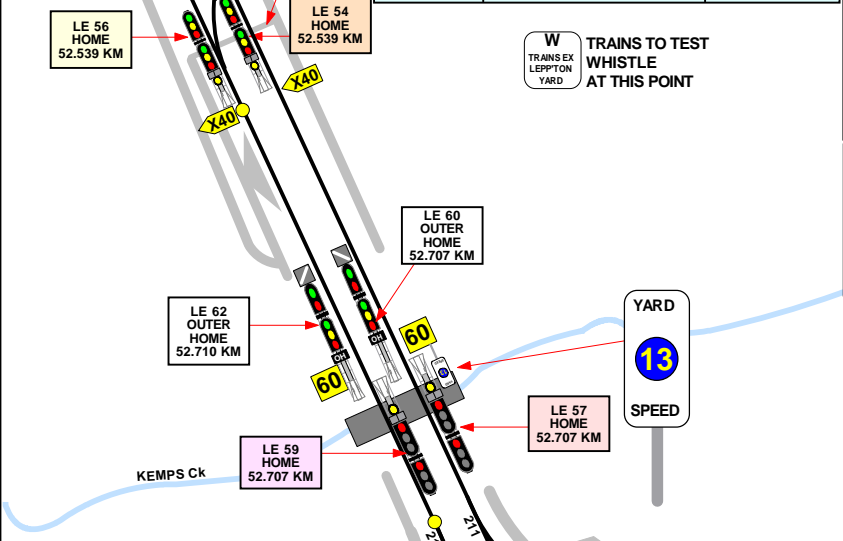
SECTION : GLENFIELD TO LEPPINGTON  
 MAP SET : CENTRAL TO MACARTHUR  
 UPDATED TO : 4 July 2019

**INFORMATION**

CONTROLLED FROM : SYDENHAM COMPLEX  
 RADIO AREA CODE : 060 (GLENFIELD)

GRADIENT  
 1 IN 155

SIGNAL	DESTINATION	INDICATION
LE 53	DOWN MAIN (M)	---
	DOWN MAIN (S)	D
	UP MAIN (M)	---
	UP MAIN (S)	U



SIGNAL	DESTINATION	INDICATION
LE 57	No. 10 SIDING (S)	1 0
	No. 9 SIDING (S)	9
	No. 8 SIDING (S)	8
	No. 7 SIDING (S)	7
	No. 6 SIDING (S)	6

SIGNAL	DESTINATION	INDICATION
LE 54	UP MAIN (M)	---
	UP MAIN (S)	U
	DOWN MAIN (M)	---
	DOWN MAIN (S)	D

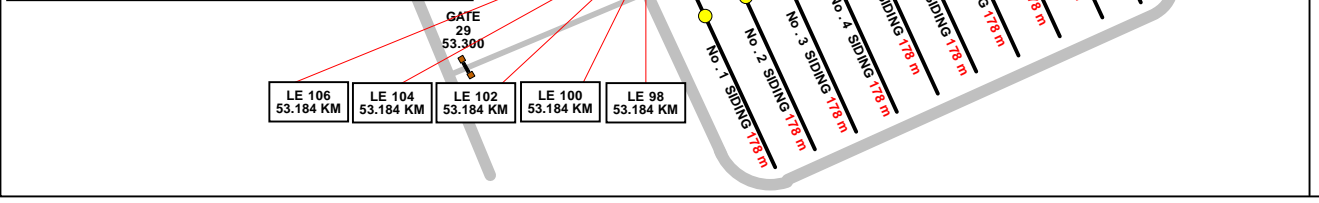
SIGNAL	DESTINATION	INDICATION
LE 59	No. 5 SIDING (S)	5
	No. 4 SIDING (S)	4
	No. 3 SIDING (S)	3
	No. 2 SIDING (S)	2
	No. 1 SIDING (S)	1
	No. 2 MACHINE SIDING (S)	M 2
	No. 1 MACHINE SIDING (S)	M 1

**25**

TRAIN WHISTLE RESTRICTIONS APPLY

SIGNAL	DESTINATION	INDICATION
LE 56	UP MAIN (M)	---
	UP MAIN (S)	U
	DOWN MAIN (M)	---
	DOWN MAIN (S)	D

LE 106 53.184 KM	LE 104 53.184 KM	LE 102 53.184 KM	LE 100 53.184 KM	LE 98 53.184 KM
---------------------	---------------------	---------------------	---------------------	--------------------



1 IN 200