

DOCUMENT NO.	D2023/10030
WORK DESCRIPTION	Routine Maintenance Activities
WPP Number	CN19C 1001
SCOPE:	<p>This SWI is applicable for the worksite protection arrangements using ASB concerning routine signals maintenance, defect management and repair of signalling assets within the limits specified below and in the attached plan.</p> <p>Work activities include:</p> <ul style="list-style-type: none"> Routine preventative and corrective work such as inspections and maintenance of signalling infrastructure and assets as appropriate for the type of protection being applied as part of this plan.
AUTHORISATIONS:	<p>Protection Officer:</p> <ul style="list-style-type: none"> Protection Officer Level 1 or higher.
SAFETY CONTROLS - Absolute Signal Blocking (ASB) arrangements:	<p>Absolute Signal Blocking on the Up Main line is at a fixed worksite location from HR112UM Signal to HR109UM Signal.</p> <p><i>For reference only.</i> The assessed ASB protection is:</p> <ul style="list-style-type: none"> HR118UM, HR112UM, HR109UM, HR103UM Signals at STOP with blocking facilities applied. <p>Absolute Signal Blocking on the Down Main line is at a fixed worksite location from HR107DM Signal to HR110DM Signal.</p> <p><i>For reference only.</i> The assessed ASB protection is:</p> <ul style="list-style-type: none"> HR101DM, HR107DM, HR110DM, HR116DM Signals at STOP with blocking facilities applied.
PRESTART REQUIREMENTS:	<p>Protection Officer assessment checklist must be completed before instructions in this SWI are followed.</p> <p>Tools and equipment required:</p> <ul style="list-style-type: none"> Protection Officer requires a phone to contact the Signaller.
FURTHER INFORMATION:	<p>NWT 300 Planning work in the Rail Corridor</p> <p>NWT 308 Absolute Signal Blocking</p> <p>NPR 703 Using Absolute Signal Blocking</p> <p>NPR 711 Using Lookouts</p> <p>NPR 712 Protecting work from rail traffic on adjacent lines</p> <p>NGE 200 Walking in the Danger Zone</p>

Safe Work Instruction

ASB Worksite Protection for Boronia routine signals maintenance



Protection Officer assessment checklist

Protection Officer's name:		Yes (Tick if yes)
This document has not expired 12 months beyond the issue date.		
On-site safety assessment has been completed and additional hazards and controls recorded on the pre-work briefing (Page 3).		
SWI details and protection arrangements have been reviewed and validated for the assessed worksite location.		
Corridor Safety Number	Protection Officer Signature	Date

Warning



If an above item does not apply, the Protection Officer must not use this Safe Work Instruction. A new worksite protection plan must be completed in accordance with NRF 014 Worksite Protection Pre-work briefing and NRF 015 Worksite Protection Plan.

Safe Work Instruction

ASB Worksite Protection for Boronia routine signals maintenance



Worksite Protection Pre-work Briefing

Briefing date: / /

Protection Officer details

name signature contact No.

Work location:

Scope of work:

Worksite protection: Refer to Worksite Protection Plan for details

Hazards (e.g. Site specific hazards identified, including physical environment, human errors, plant and equipment)	Controls (to be implemented to eliminate or reduce the risk to the lowest practicable level)	Person responsible for Control
Approaching rail traffic	ASB implemented. Workers to remain within worksite limits.	Protection Officer
Adjacent live lines	Designated work and walk areas as instructed by the Protection Officer. Workers must remain within the ASB nominated worksite location limits whilst work is being performed.	Protection Officer
Electrical infrastructure	Electrical infrastructure is to be treated as live and workers must maintain a safe approach distance as instructed by the Protection Officer or Workplace Supervisor.	Protection Officer & Workplace Supervisor
Access to / Egress from worksite	Protection Officer will assess and instruct when it is safe for workers to use <i>NGE 200 Walking in the Danger Zone</i> to move to and from the worksite or safe place.	All
Mobile phone distraction	Mobile phone usage is not allowed in the Danger Zone. Mobile phones may be used only in a safe place after informing the Protection Officer.	All
Multiple entry points into worksite	ASB implemented	Protection Officer

Worksite Protection Plan – Absolute Signal Blocking

Signaller details

name	Hornsby North Signal Box	02 9701 1513
------	--------------------------	--------------

1. ASB Request – Protection Officer details

name	signature	contact No.
RSW or RIW No.	designation	Planned Duration

Type of work: **Routine signals maintenance activities**

2. Worksite location

On the	Up Main Line	from	HR112 UM Signal	to	HR109 UM Signal
On the	Down Main line	from	HR107 DM Signal	to	HR110 DM Signal

3. Protection to be used

Signal(s) at STOP with blocking facilities applied	Points secured
--	----------------

Protection is required from other Signallers(s) at Location / panel Location / panel

4. Assurances

All points of entry into the affected portion of track are protected and blocking facilities applied

The last rail traffic to pass the protection was rail traffic ID The last known location of rail traffic is location

Confirm that there is no rail traffic between the protection and the worksite

5. Authorisation

Authorised by Signaller

name	panel	hr	/ /
------	-------	----	-----

Protection Number Notes

6. Temporarily Suspending ASB

Provide the name and worksite location <input type="checkbox"/>	Provide the name and worksite location <input type="checkbox"/>	Provide the name and worksite location <input type="checkbox"/>
Workers and equipment are clear of the Danger Zone <input type="checkbox"/>	Workers and equipment are clear of the Danger Zone <input type="checkbox"/>	Workers and equipment are clear of the Danger Zone <input type="checkbox"/>
Provide protection number <input type="checkbox"/>	Provide protection number <input type="checkbox"/>	Provide protection number <input type="checkbox"/>
ASB suspended at <input style="width:50px" type="text"/> hr	ASB suspended at <input style="width:50px" type="text"/> hr	ASB suspended at <input style="width:50px" type="text"/> hr

7. Re-establish ASB assurances

The worksite location is identical <input type="checkbox"/>	The worksite location is identical <input type="checkbox"/>	The worksite location is identical <input type="checkbox"/>
All points of entry into the affected portion of track are protected and blocking facilities applied <input type="checkbox"/>	All points of entry into the affected portion of track are protected and blocking facilities applied <input type="checkbox"/>	All points of entry into the affected portion of track are protected and blocking facilities applied <input type="checkbox"/>
The last rail traffic to pass the protection was <input style="width:50px" type="text"/> rail traffic ID	The last rail traffic to pass the protection was <input style="width:50px" type="text"/> rail traffic ID	The last rail traffic to pass the protection was <input style="width:50px" type="text"/> rail traffic ID
The last known location of rail traffic is <input style="width:50px" type="text"/> location	The last known location of rail traffic is <input style="width:50px" type="text"/> location	The last known location of rail traffic is <input style="width:50px" type="text"/> location
There is no approaching rail traffic between the protection and the worksite <input type="checkbox"/>	There is no approaching rail traffic between the protection and the worksite <input type="checkbox"/>	There is no approaching rail traffic between the protection and the worksite <input type="checkbox"/>
ASB re-established at <input style="width:50px" type="text"/> hr	ASB re-established at <input style="width:50px" type="text"/> hr	ASB re-established at <input style="width:50px" type="text"/> hr
Protection Number <input style="width:50px" type="text"/>	Protection Number <input style="width:50px" type="text"/>	Protection Number <input style="width:50px" type="text"/>

8. Ending

Provide name and worksite location Workers and equipment clear of the Danger Zone Provide protection number Ended at hr

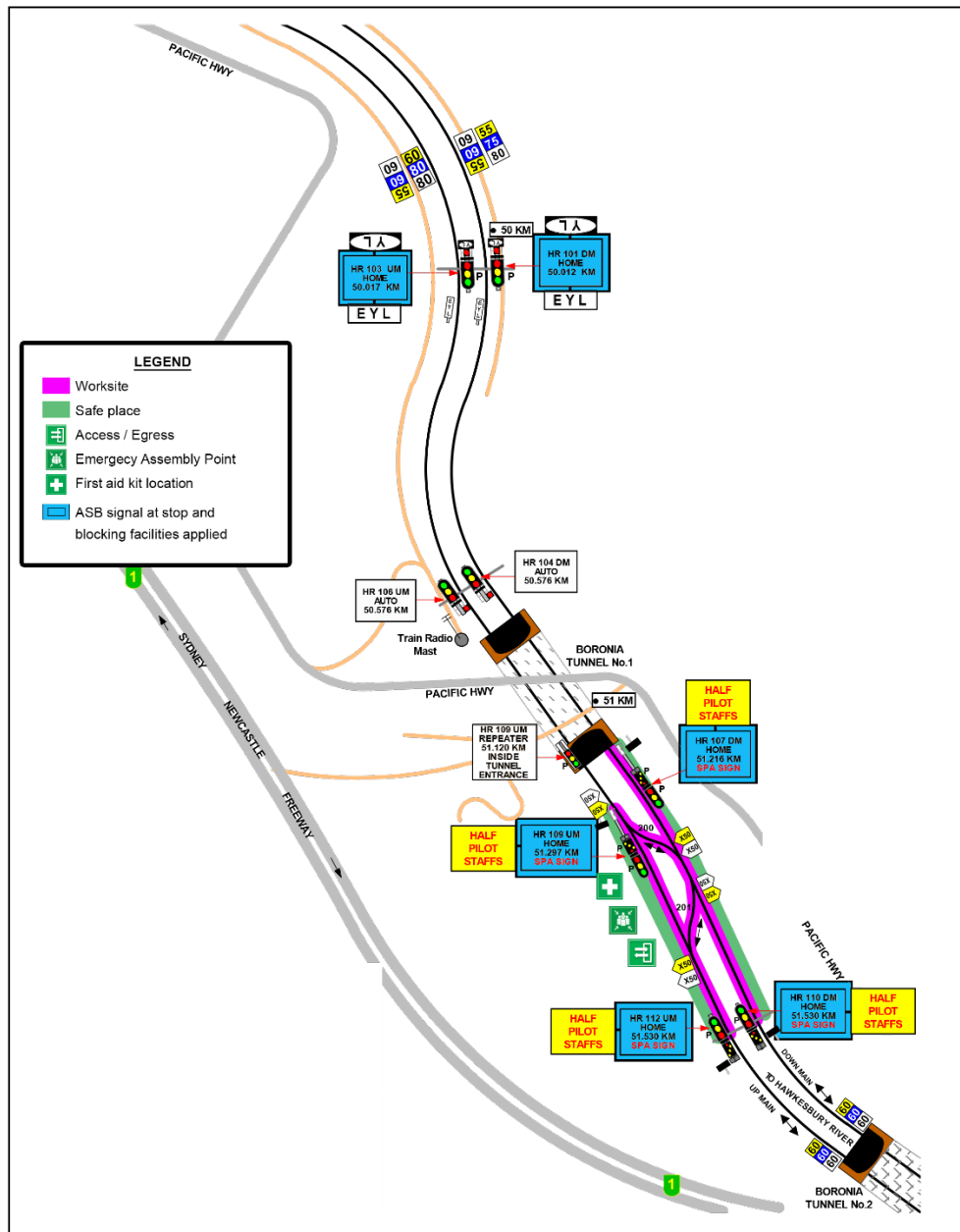
6. Temporarily Suspending ASB					
Provide the name and worksite location	<input type="checkbox"/>	Provide the name and worksite location	<input type="checkbox"/>	Provide the name and worksite location	<input type="checkbox"/>
Workers and equipment are clear of the Danger Zone	<input type="checkbox"/>	Workers and equipment are clear of the Danger Zone	<input type="checkbox"/>	Workers and equipment are clear of the Danger Zone	<input type="checkbox"/>
Provide protection number	<input type="checkbox"/>	Provide protection number	<input type="checkbox"/>	Provide protection number	<input type="checkbox"/>
ASB suspended at	<input type="text"/> hr	ASB suspended at	<input type="text"/> hr	ASB suspended at	<input type="text"/> hr
7. Re-establish ASB assurances					
The worksite location is identical	<input type="checkbox"/>	The worksite location is identical	<input type="checkbox"/>	The worksite location is identical	<input type="checkbox"/>
All points of entry into the affected portion of track are protected and blocking facilities applied	<input type="checkbox"/>	All points of entry into the affected portion of track are protected and blocking facilities applied	<input type="checkbox"/>	All points of entry into the affected portion of track are protected and blocking facilities applied	<input type="checkbox"/>
The last rail traffic to pass the protection was	<input type="text"/> rail traffic ID	The last rail traffic to pass the protection was	<input type="text"/> rail traffic ID	The last rail traffic to pass the protection was	<input type="text"/> rail traffic ID
The last known location of rail traffic is	<input type="text"/> location	The last known location of rail traffic is	<input type="text"/> location	The last known location of rail traffic is	<input type="text"/> location
There is no approaching rail traffic between the protection and the worksite	<input type="checkbox"/>	There is no approaching rail traffic between the protection and the worksite	<input type="checkbox"/>	There is no approaching rail traffic between the protection and the worksite	<input type="checkbox"/>
ASB re-established at	<input type="text"/> hr	ASB re-established at	<input type="text"/> hr	ASB re-established at	<input type="text"/> hr
Protection Number	<input type="text"/>	Protection Number	<input type="text"/>	Protection Number	<input type="text"/>

Notes

6. Temporarily Suspending ASB					
Provide the name and worksite location	<input type="checkbox"/>	Provide the name and worksite location	<input type="checkbox"/>	Provide the name and worksite location	<input type="checkbox"/>
Workers and equipment are clear of the Danger Zone	<input type="checkbox"/>	Workers and equipment are clear of the Danger Zone	<input type="checkbox"/>	Workers and equipment are clear of the Danger Zone	<input type="checkbox"/>
Provide protection number	<input type="checkbox"/>	Provide protection number	<input type="checkbox"/>	Provide protection number	<input type="checkbox"/>
ASB suspended at	<input type="text"/> hr	ASB suspended at	<input type="text"/> hr	ASB suspended at	<input type="text"/> hr
7. Re-establish ASB assurances					
The worksite location is identical	<input type="checkbox"/>	The worksite location is identical	<input type="checkbox"/>	The worksite location is identical	<input type="checkbox"/>
All points of entry into the affected portion of track are protected and blocking facilities applied	<input type="checkbox"/>	All points of entry into the affected portion of track are protected and blocking facilities applied	<input type="checkbox"/>	All points of entry into the affected portion of track are protected and blocking facilities applied	<input type="checkbox"/>
The last rail traffic to pass the protection was	<input type="text"/> rail traffic ID	The last rail traffic to pass the protection was	<input type="text"/> rail traffic ID	The last rail traffic to pass the protection was	<input type="text"/> rail traffic ID
The last known location of rail traffic is	<input type="text"/> location	The last known location of rail traffic is	<input type="text"/> location	The last known location of rail traffic is	<input type="text"/> location
There is no approaching rail traffic between the protection and the worksite	<input type="checkbox"/>	There is no approaching rail traffic between the protection and the worksite	<input type="checkbox"/>	There is no approaching rail traffic between the protection and the worksite	<input type="checkbox"/>
ASB re-established at	<input type="text"/> hr	ASB re-established at	<input type="text"/> hr	ASB re-established at	<input type="text"/> hr

INSTRUCTIONS:	<ol style="list-style-type: none"> 1. Workers enter corridor via gate N00 50.930 D on Pacific Highway, Cowan. 2. Protection Officer briefs workers about the worksite protection arrangements. 3. Protection Officer contacts the Signaller at Hornsby North Signal Box and requests ASB. 4. Workers remain in safe place until Protection Officer informs all protection is in place. 5. After the ASB is authorised workers start work 6. Workers move to safe place after work is complete. 7. Protection Officer contacts the Signaller at Hornsby North Signal Box to end ASB. 8. Workers exit workplace via gate N00 50.930 D on Pacific Highway, Cowan
ADDITIONAL DETAILS	<p>Suspending ASB</p> <p>When ASB is suspended, workers must clear the worksite on both lines and move to a safe place regardless of which line rail traffic is approaching on.</p> <p>Workers must not enter the Danger Zone until the ASB has been established on both lines.</p>

Diagram



Continued

