

Lookout Working Worksite Protection for City Circle routine network maintenance activities

DOCUMENT NO.	D2021/29550
WORK DESCRIPTION	Routine network maintenance activities – City Circle (Lookout working)
WPP Number	CE2B 10169
SCOPE:	<p>This SWI is applicable for the worksite protection arrangements using lookout working concerning routine network maintenance, defect management and repair of assets within the limits specified below and in the attached plan.</p> <p>City Inner and City Outer Lines from Central Station through to Circular Quay Station and looping back to Central Station.</p> <p>Work activities include:</p> <ul style="list-style-type: none"> Routine preventative and corrective work such as inspections and maintenance as appropriate for the type of protection being applied as part of this plan.
AUTHORISATIONS:	<p>Protection Officer: Protection Officer Level 1 or higher</p> <p>Lookout: Handsignaller Level 1 or higher and/or Protection Officer Level 1 or higher.</p>
SAFETY CONTROLS – Lookout Working arrangements:	<p>The nominated worksite location is: Up and Down City Inner & Up and Down City Outer Lines between SY 377 DCO Signal and SY 350 CO Signal</p> <p>The nominated worksite location for Lookout Working is a moving worksite, where workers are working along the track within the limits of the nominated worksite location up to the where the Lookout is established.</p> <p>As work moves along the track, the Protection Officer must assess the new location and:</p> <ul style="list-style-type: none"> Establish Lookouts as required to watch for approaching rail traffic from all entry points Designate and instruct which safe places the workers are to use as the work is completed along the work route within the worksite limits. Make sure workers are not walking in more than 2 person groups. Groups must be space 10m apart. Instruct Lookouts to use warning lights to provide as a safety measure when inside tunnel areas
PRESTART REQUIREMENTS:	<p>Protection Officer Assessment checklist must be completed before instructions in this SWI are followed.</p> <p>Tools and equipment required:</p> <ul style="list-style-type: none"> Protection Officer requires a phone to contact the Signaller. Lookouts require a high-visibility arm sleeve and a whistle / horn.
FURTHER INFORMATION:	<p><i>NWT 300 Planning work in the Rail Corridor</i></p> <p><i>NWT 310 Lookout Working</i></p> <p><i>NGE 200 Walking in the Danger Zone</i></p> <p><i>NPR 711 Using Lookouts</i></p> <p><i>NPR 751 Calculating Minimum Warning Time</i></p> <p><i>NPR 712 Protecting work from rail traffic on adjacent lines</i></p> <p><i>NLA 104 City Circle</i></p> <p><i>Lookout Working Prohibited Locations Register</i></p>

Protection Officer assessment checklist

Protection Officer's name:		Yes <i>(Tick if Yes)</i>
This document has not expired 12 months beyond the issue date.		
SWI details and protection arrangements have been reviewed and validated for the assessed worksite location, including: <ul style="list-style-type: none"> On-site safety assessment has been completed for relevancy of works being undertaken The required protection details, environment and tasks are unchanged from the details of this SWI 		
This document has not expired 12 months beyond the issue date.		
Corridor Safety Number	Protection Officer Signature	Date

Warning



If an above item does not apply, the Protection Officer must not use this Safe Work Instruction. A new worksite protection plan must be completed in accordance with NRF 014 Worksite Protection Pre-work briefing and NRF 015 Worksite Protection Plan.

Lookout Working Worksite Protection for City Circle routine network maintenance activities



Worksite Protection Pre-work Briefing

Briefing date:

Protection Officer details

Work location:

Scope of work:

Worksite protection: Refer to Worksite Protection Plan for details

Hazards (e.g. Site specific hazards identified, including physical environment, human errors, plant and equipment)	Controls (to be implemented to eliminate or reduce the risk to the lowest practicable level)	Person responsible for Control
Approaching rail traffic	Lookouts must be trained and competent to perform lookout duties. Lookouts must be rotated if performing lookout duties for extended periods of time Workers to remain within worksite limits as set out in this procedure. Lookouts must be placed as per the protection plan attached to this document. Workers are to stop work and move to a safe place immediately on being warned by the Lookouts	Protection Officer & Lookout
Adjacent live lines	Lookouts must provide warning to workers when rail traffic is approaching from the adjacent line in either direction.	Protection Officer & Lookout
Obstruction to Minimum Sighting Distance	Lookouts must provide warning to the workers whenever their line of sight is obstructed by passing rail traffic and/or any other obstructions. Workers must stop work and move to a safe place and reassess positioning and method.	Protection Officer & Lookout
Refuge limitations (Man holes)	Workers must not walk in more than 2 person groups. Groups must be spaced 10m apart. Protection Officer will designate each individual's refuge safe place to move to when the Lookout provides warning.	Protection Officer
No easily reachable Safe Place within station platform limits	No work or walking through station platform limits. Higher level of protection required to access.	All
Adjoining / surrounding worksites	Lookouts must have two independent audible warning devices that can be heard by workers over any noise generated by adjoining/surrounding worksites. Lookouts must provide warning if their line of sight is obstructed by adjoining/surrounding worksites.	Protection Officer & Lookout
Electrical infrastructure	Electrical infrastructure is to be treated as live and workers must maintain a safe approach distance as instructed by the Protection Officer or Workplace Supervisor.	Protection Officer & Workplace Supervisor
Access to / Egress from worksite	Access and egress points must be agreed prior to entering the danger zone, consideration should be given to ease of access and safest possible entry and exit points.	All

Lookout Working Worksite Protection for City Circle routine network maintenance activities



Worksite Protection Plan – Lookout Working

Signaller details

	East Panel	02 9701 1581
--	-------------------	---------------------

Protection Officer details

name	signature	contact No.
RSW or RIW No.	designation	Planned duration

Workplace Supervisor details:

Type of work: **Routine network maintenance activities**

Worksite location

On the

between and

Worksite assessment

Has the Lookout Working Prohibited Locations Register been consulted? Yes

Warning method

Whistle/Horn Voice/Touch

Minimum Warning Time Calculations

Maximum track speed

Number of Lookouts used Position of Lookouts to

Number of additional Lookouts* used Position of Lookouts To

Note - Lookouts are relocated to positions within these KMs as workers move along the worksite.

2 sec	+	3 sec	+	10 sec		15 sec		40 km/h		167 metres
2 sec	+	3 sec	+	10 sec	= Minimum Warning Time (MWT)	15 sec		30 km/h		125 metres
sec	+	sec	+	10 sec	(S+M+10 sec = MWT)	sec		km/h		metres
<small>See Time (S)</small>		<small>Move Time (M)</small>		<small>Safe Time</small>				<small>Track speed</small>	<small>Minimum Sighting Distance as calculated</small>	

Note – Additional MWT calculations can be recorded in the Protection Officer’s Diary.

Warning lights used do not exceed a MWT of 20 seconds Yes

Where are the safe places identified for the Lookouts and the workers?

Lookouts:

Workers:

Ensure the workers have been briefed about these work details Yes

Diagrams, notes and detailed instructions over the next pages. These are to be read and followed as part of this worksite protection plan for Lookout Working.

Lookout Working Worksite Protection for City Circle routine network maintenance activities

INSTRUCTIONS:	<ol style="list-style-type: none"> 1. Protection Officer contacts East Panel to tell the Signaller of the use of Lookout Working in the City Circle. 2. Workers enter the rail corridor via any station in the City Circle or via access pads at Circular Quay and Goulburn Street Portal. 3. Place Lookouts at designated locations. 4. Workers start work up to the position of the Lookout. 5. Workers move to designated safe places. 6. Re-establish Lookouts at the next designated locations. 7. Repeats steps 4 - 6 until the work is complete. 8. Move workers into a designated safe place. 9. Move Lookouts into a safe place and egress the worksite at the designated exit location. 10. Protection Officer Ends Lookout Working by contacting East Panel to tell the Signaller that work is complete and all workers and equipment are in a safe place.
----------------------	---

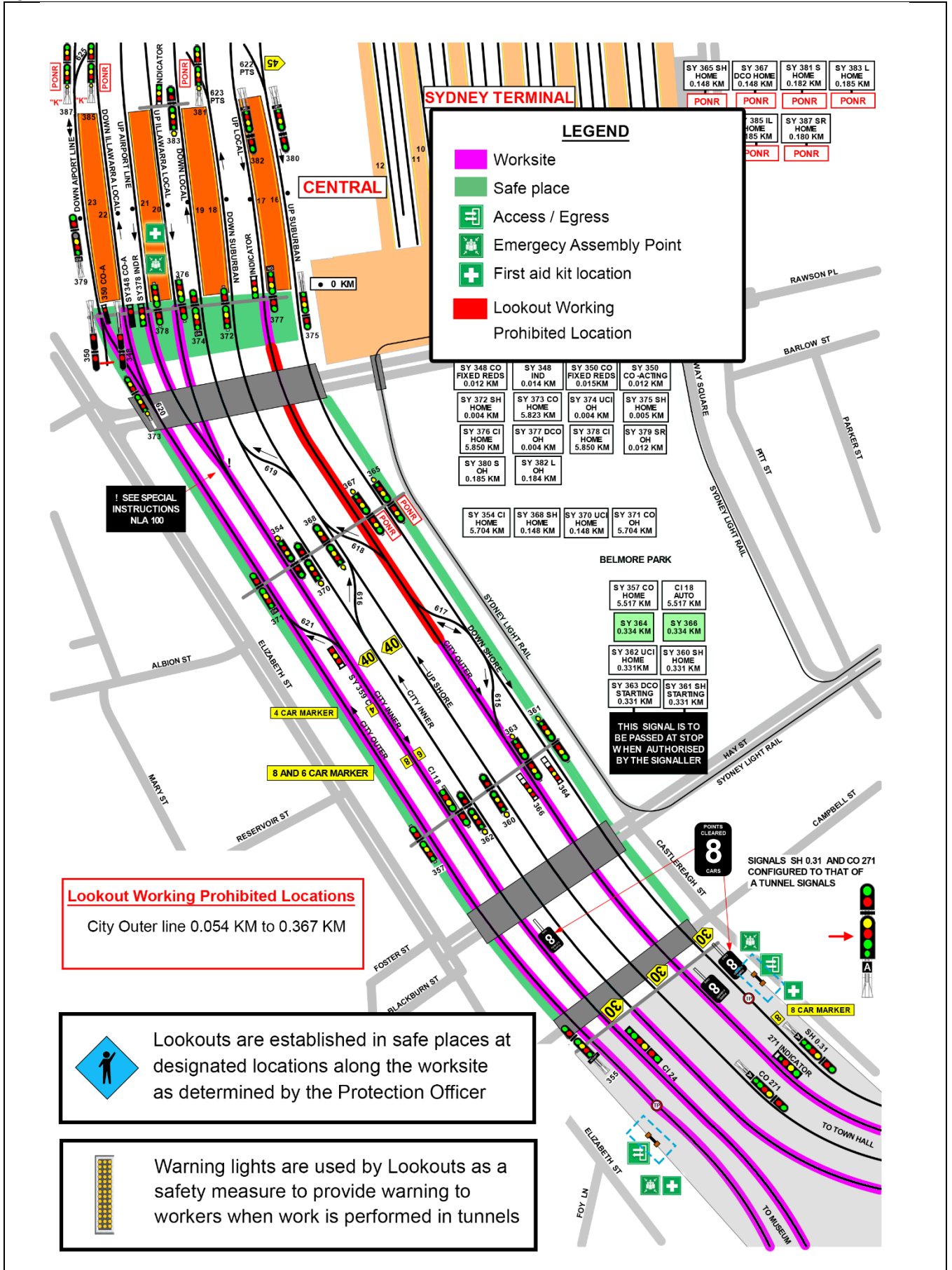
ADDITIONAL DETAILS	<p><u>Refuge limitations (man holes)</u></p> <p>Man hole safe places have limited space for up to 2 persons. Workers must not walk in more than 2 person groups. Groups must be spaced 10m apart.</p> <p>The Protection Officer must designate which man holes are to be used by whom when the Lookout warns of approaching rail traffic.</p> <p><u>Lookout Working Prohibited Locations</u></p> <p>City Circle- All tracks between 0.000 KM to 5.892 KM - Lookout Working Prohibited in platform areas.</p> <p>There are no safe places in the platform areas. Workers must stop work and move onto the platform when the workers reach the station platforms.</p> <p>The City Outer line between 0.054 KM to 0.367 KM is a Lookout Working Prohibited Location due to lack of achievable MWT.</p>
---------------------------	---

WARNING LIGHTS	Warning lights may be used as a safety measure within tunnel areas in accordance with <i>NLA 104 – City Circle</i> .
-----------------------	--

PHOTOS	 <p>Image 1: Example of warning light at Goulbourn Street Portal</p>	 <p>Image 2: Access by the pad at Circular Quay</p>
---------------	--	--

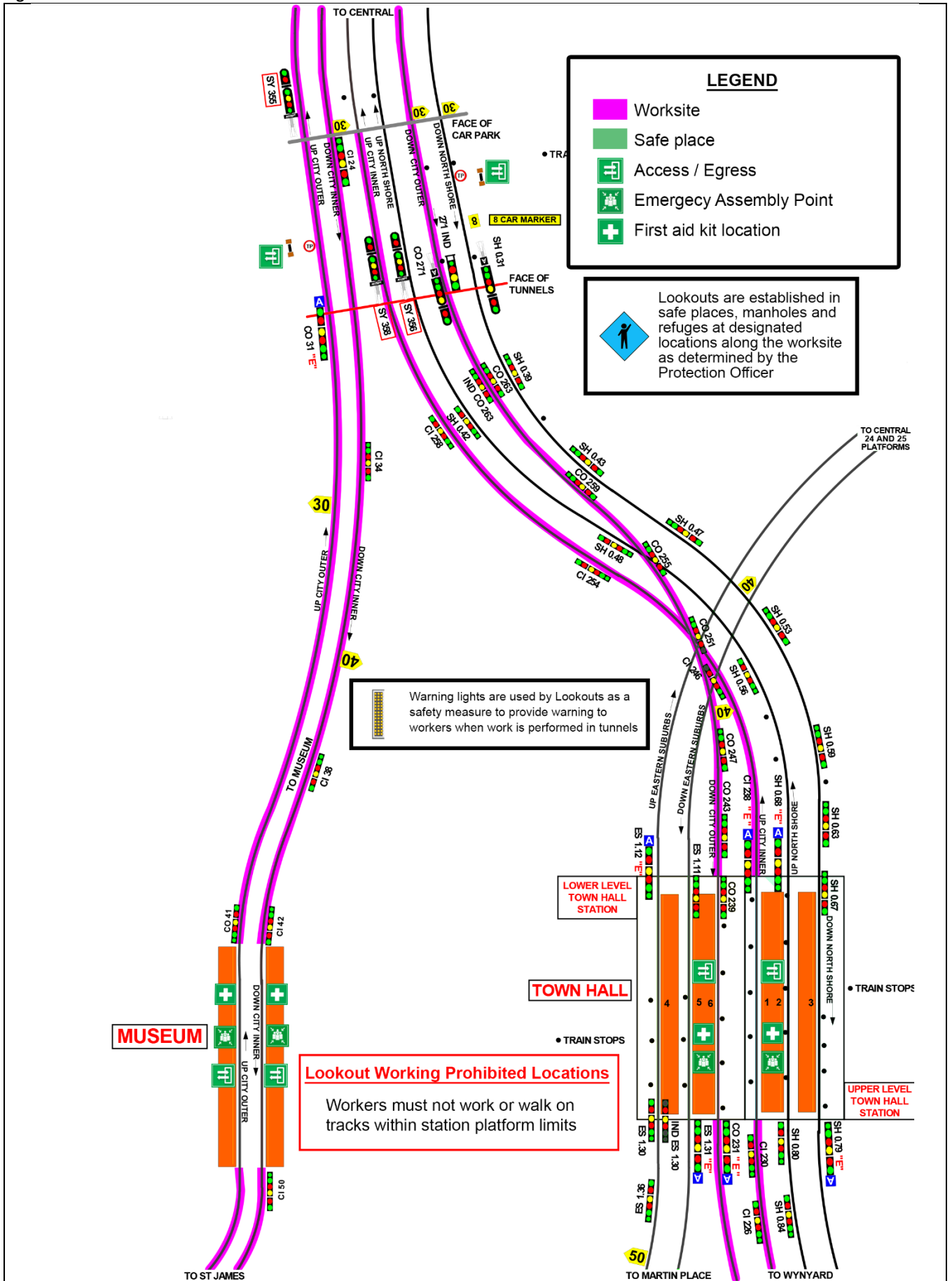
Lookout Working Worksite Protection for City Circle routine network maintenance activities

Diagram



Lookout Working Worksite Protection for City Circle routine network maintenance activities

Diagram cont.



Lookout Working Worksite Protection for City Circle routine network maintenance activities

Diagram cont.

