

<b>DOCUMENT NO.</b>	D2021/24409
<b>WORK DESCRIPTION</b>	Routine network maintenance activities
<b>WPP Number</b>	SW3B 12955
<b>SCOPE:</b>	<p>This SWI is applicable only for the worksite protection arrangements of the routine Electrical Traction, Signals and Track/Structures maintenance activities performed in the South West on the:</p> <p><b>Leppington Up Main, Leppington Down Main, Leppington Up Loop, Leppington Down Loop and all tracks Leppington Stabling Yard from 200 points to End of Terminal Line.</b></p> <p>Work activities include:</p> <ul style="list-style-type: none"> <li>• Points and Signals Maintenance Inspections</li> <li>• Track Maintenance Inspections</li> <li>• OHW Patrols and Maintenance Inspections</li> <li>• Structures Maintenance Inspections</li> <li>• Revised Compliance Date Inspections</li> </ul>
<b>AUTHORISATIONS:</b>	<p><b>Protection Officer:</b> Protection Officer Level 1 or higher  <b>Lookout:</b> Handsignaller Level 1 or higher, Protection Officer Level 1 or higher.</p>
<b>SAFETY CONTROLS – Lookout Working arrangements:</b>	<p>The nominated worksite location for Lookout Working includes the <b>Leppington Up Main, Leppington Down Main, Leppington Up Loop, Leppington Down Loop and all tracks Leppington Stabling Yard from 200 points to End of Terminal Line.</b></p> <p>As work moves along the track, the Protection Officer must assess the new location and:</p> <ul style="list-style-type: none"> <li>• Establish Lookouts as required to watch for approaching rail traffic from all entry points</li> <li>• Designate and instruct which safe places the workers are to use as the work is completed along the work route within the worksite limits.</li> </ul>
<b>PRESTART REQUIREMENTS:</b>	<p>Protection Officer assessment checklist must be completed before instructions in this SWI are followed.  Tools and equipment required:</p> <ul style="list-style-type: none"> <li>• Protection Officer requires a phone to contact the Signaller.</li> <li>• Lookouts require a high-visibility arm sleeve and a whistle / horn.</li> <li>• Work group is required to sign in at the Leppington Stabling Yard office prior to commencing any work inside Leppington Stabling Yard.</li> </ul>
<b>FURTHER INFORMATION:</b>	<p><i>NWT 300 Planning work in the Rail Corridor</i>  <i>NWT 310 Lookout Working</i>  <i>NPR 711 Using Lookouts</i>  <i>NPR 751 Calculating Minimum Warning Time</i>  <i>NLA 514 Leppington</i>  <i>NGE 200 Walking in the Danger Zone</i>  <i>Lookout Working Prohibited Locations Register</i></p>

**Protection Officer assessment checklist**

<b>Protection Officer name:</b>		<b>Yes</b> <i>(Tick if Yes)</i>
This document is still current at the time of its application? (up to 12 months from the document issue date)		
SWI details and protection arrangements have been reviewed and validated for the assessed worksite location, including: <ul style="list-style-type: none"> <li>On-site safety assessment has been completed for relevancy of works being undertaken</li> <li>The required protection details, environment and tasks are unchanged from the details of this SWI</li> </ul>		
<ul style="list-style-type: none"> <li>The Protection Officer and Qualified Workers deploying qualifications are current and have practiced in the last 6 months. If not practiced, then a Rail Safety Coach must be contacted for guidance.</li> </ul>		
<b>Corridor Safety Number</b>	<b>Protection Officer Signature</b>	<b>Date</b>

**Warning**



*If an above item does not apply, the Protection Officer must not use this Safe Work Instruction. A new worksite protection plan must be completed in accordance with NRF 014 Worksite Protection Pre-work briefing and NRF 015 Worksite Protection Plan.*

**Safe Work Instruction**

**Lookout Working Worksite Protection for Leppington to Leppington Stabling Yard routine network maintenance activities**



**Worksite Protection Pre-work Briefing**

Briefing date:  /  /

**Protection Officer Details**

name  signature  contact No.

Work location: **Leppington to Leppington Stabling Yard**

Scope of work: **Routine network maintenance activities**

Worksite protection: **Lookout Working** Refer to Worksite Protection Plan for details

Hazards (e.g. Site specific hazards identified, including physical environment, human errors, plant and equipment)	Controls (to be implemented to eliminate or reduce the risk to the lowest practicable level)	Person responsible for Control
<b>Rail traffic</b>	Lookout Working implemented. Workers must remain within worksite limits.	Protection Officer
<b>Two-way running / multiple entry points into worksite</b>	One Lookout placed watching for rail traffic approach in each direction before work starts. Lookouts are to warn workers of all approaching rail traffic, including rail traffic entering, stabling or travelling within the worksite. Workers are to stop work and move to a safe place once warned.	Protection Officer
<b>Obstruction to Minimum Sighting Distance</b>	Lookouts must provide immediate warning to the workers whenever the Minimum Sighting Distance is obstructed by passing or stabled rail traffic. Workers are to stop work and move to a safe place once warned.  Lookouts must confirm with the Protection Officer when the Minimum Sighting Distance is re-established.	Protection Officer and Lookout
<b>Adjoining/Surrounding Worksites</b>	Lookouts must have two independent audible warning devices that can be heard by workers over any noise generated by other worksites and background noise.  Lookouts must provide immediate warning if their line of sight is obstructed by adjoining/surrounding worksites.	Protection Officer and Lookout
<b>Access to / Egress from worksite</b>	Protection Officer will assess and instruct when it is safe for workers to use <i>NGE 200 Walking in the Danger Zone</i> to move to and from the worksite or safe place.	All
<b>Mobile phone</b>	Mobile phone usage is only allowed in the danger zone when required for work purposes ONLY.  Other than being used for work purposes, mobile phones may be used only in a safe place after informing the Protection Officer.	All
<b>Obstructions or uneven surfaces in the exit path to a safe place</b>	Before commencing work a route to the safe place is to be agreed upon taking obstructions and uneven surfaces into consideration	Site Supervisor All
<b>Exposure to excessive noise</b>	Workers are not to stand directly in front of audible warning device(s)	All



**Safe Work Instruction**

**Lookout Working Worksite Protection for Leppington to Leppington Stabling Yard routine network maintenance activities**



**Worksite Protection Plan – Lookout Working**

**Signaller Details**

**Protection Officer Details**

Planned duration

Workplace Supervisor details:

Type of work:

**Worksite Location** (tick the tracks that apply)

On the

<input type="checkbox"/>	Leppington Up Main
<input type="checkbox"/>	Leppington Down Main
<input type="checkbox"/>	Leppington Up Loop
<input type="checkbox"/>	Leppington Down Loop
<input type="checkbox"/>	All tracks Leppington Stabling Yard

between  and

**Worksite Assessment**

Has the Worksite Protection Hazardous Locations Register been consulted? Yes

**Warning method**

Horn
  Whistle

**Minimum Warning Time Calculations – Sections 1 and 2**

Maximum track speed

Number of Lookouts used 
 Position of Lookouts  to 
Note - Lookouts are relocated to positions within these km's as workers move along the worksite.

Number of additional Lookouts\* used 
 Position of Lookouts  to

2 sec	+	3 sec	+	10 sec	= Minimum Warning Time (MWT) (S+M+10 sec = MWT)	15 sec	60km/h	250 metres	* Add an additional 5 seconds of See Time if an additional Lookout is used  Note – Additional MWT calculations can be recorded in the Protection Officer's Diary.
2 sec	+	3 sec	+	10 sec		15 sec	25km/h	104 metres	
2 sec	+	3 sec	+	10 sec		15 sec	15km/h	63 metres	
<small>See Time (S)</small>		<small>Move Time (M)</small>		<small>Safe Time</small>		<small>Track speed</small>		<small>Minimum Sighting Distance as calculated</small>	

**Where are the safe places identified for the Lookouts and the workers?**



Lookouts:

Workers:

Ensure the workers have been briefed about these work details Yes

Diagrams, notes and detailed instructions of Sections 1, and 2 are over the next pages. These are to be read and followed as part of this worksite protection plan for Lookout Working.

**Section 1 – 200 points to LE 60 signal**

<p><b>INSTRUCTIONS:</b></p>	<ol style="list-style-type: none"> <li>1. Protection Officer briefs workers about the worksite protection arrangements.</li> <li>2. Protection Officer contacts Glenfield Panel and tells the Signaller about the use of Lookout Working between Leppington and Leppington Stabling Yard on the <b>Leppington Up Main, Leppington Down Main, Leppington Up Loop, Leppington Down Loop</b> and <b>all tracks Leppington Stabling Yard</b>.</li> <li>3. Workers enter rail corridor via gate <b>M28 51.164 D</b>, located at the end of <b>Leppington Station’s bus area</b>, on the down side of <b>Leppington Station</b> off <b>Rickard Rd</b>.</li> <li>4. Protection Officer places Lookouts watching for rail traffic approach in both directions at the designated locations.</li> <li>5. Workers start work on the <b>Leppington Up Main, Leppington Down Main, Leppington Up Loop, Leppington Down Loop</b>, working up to the designated Lookout location.</li> <li>6. Workers move to a safe place.</li> <li>7. Repeat steps 4 – 6 until workers complete work from <b>200 points</b> finishing at <b>LE 57 Signal</b>.</li> <li>8. Recall Lookouts</li> <li>9. Continue to Section 2 instructions.</li> </ol>
<p><b>ADDITIONAL DETAIL</b></p>	<p>Leppington Yard is a <b>two-way running area</b>. Rail traffic movements can occur in any direction at any time between <b>200 points</b> and <b>LE 57 signal</b>.</p> <p>A Lookout is placed for each direction and must provide warning for any rail traffic approach.</p> <p>Workers must move into a safe place when Lookouts provide a warning regardless of which line the rail traffic is approaching on.</p> <p>Note that rail traffic coming to and from Leppington Station may impede the Lookout’s Minimum Sighting Distance. Lookouts must provide warning to workers when Minimum Sighting Distance is impeded by rail traffic on adjacent lines. All workers must remain in a safe place until Lookouts can re-establish Minimum Sighting Distance.</p>
<p><b>LOOKOUTS</b></p>	<div style="display: flex; justify-content: space-around;"> <div style="text-align: center;">  <p><b>Image 1:</b> Lookout in Down cess near <b>LE 31 signal</b> looking for approaching down rail traffic</p> </div> <div style="text-align: center;">  <p><b>Image 2:</b> Location of Lookout in Down cess near <b>LE 31 signal</b> looking for approaching up rail traffic</p> </div> </div>

**Safe Work Instruction**

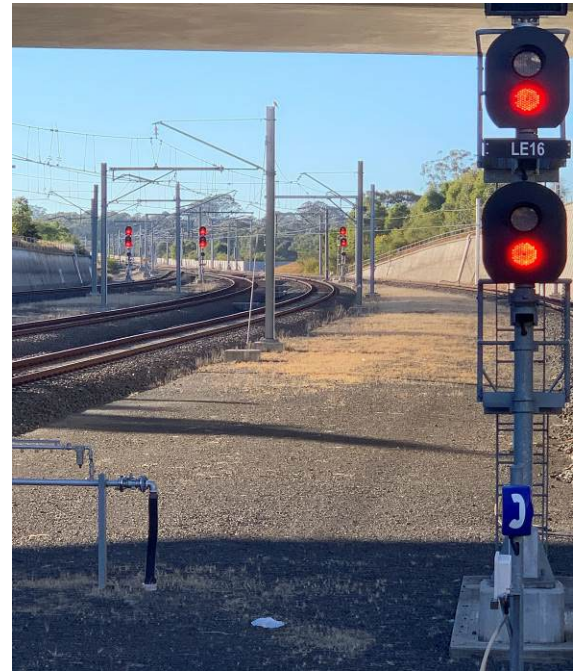
**Lookout Working Worksite Protection for Leppington to Leppington Stabling Yard routine network maintenance activities**



**LOOKOUTS**



**Image 3:** View towards country from Leppington Platform 4



**Image 4:** View towards city from Leppington Platform 4

**ACCESS/EGRESS**





**Image 5:** Access Gate into rail corridor from Leppington Carpark



**Image 6:** Access Gate into rail corridor from Leppington Carpark

Section 2 – Leppington Stabling Yard

<b>INSTRUCTIONS:</b>	<ol style="list-style-type: none"> <li>1. Protection Officer, Lookouts and workers move to <b>Leppington Stabling Yard</b> entrance gate.</li> <li>2. Workers <b>MUST</b> sign in on the visitor register at <b>Leppington Stabling Yard office</b>.</li> <li>3. Workers re-enter rail corridor at gate <b>N06 53.257 D</b>, located in the carpark of <b>Leppington Stabling Yard</b>.</li> <li>4. Protection Officer places Lookout in Down cess watching for Down direction rail traffic approach the designated locations along the work route for <b>Leppington Stabling Yard</b>.</li> <li>5. Protection Officer places Lookout in Up cess watching for Up direction rail traffic approach at the designated locations along the work route for <b>Leppington Stabling Yard</b>.</li> <li>6. Workers start work in <b>Leppington Stabling Yard</b>.</li> <li>7. Workers move to a safe place once work reaches a Lookout.</li> <li>8. Protection Officer repositions Lookouts at the required designated locations.</li> <li>9. Repeat steps 6 - 8 until workers complete inspections at <b>Leppington Stabling Yard</b>.</li> <li>10. Once work is complete, all workers move into a safe place.</li> <li>11. Protection Officer recalls Lookouts.</li> <li>12. Protection Officer contacts the Signaller at Glenfield Panel to end Lookout Working.</li> </ol>
<b>ADDITIONAL DETAILS</b>	<p>Work groups must ensure they are inducted into <b>Leppington Stabling Yard</b> prior to commencing work.</p> <p>Leppington Yard is a <b>two-way running area</b>. Rail traffic movements can occur in any direction at any time between <b>LE 5 signal</b> and <b>LE 57 signal</b>.</p> <p>A Lookout is placed for each direction and must provide warning for any rail traffic approach.</p> <p>Workers must move into a safe place when Lookouts provide a warning regardless of which line the rail traffic is approaching on.</p> <p>Lookouts must provide warning to workers when Minimum Sighting Distance is impeded by rail traffic on adjacent lines. All workers must remain in a safe place until Lookouts can re-establish Minimum Sighting Distance.</p>
<b>LOOKOUTS</b>	<div style="display: flex; justify-content: space-around;"> <div style="text-align: center;">  <p><b>Image 7:</b> View towards City from Lookout Position</p> </div> <div style="text-align: center;">  <p><b>Image 8:</b> View towards Country (Terminations) from Lookout Position</p> </div> </div>



ACCESS/EGRESS



Image 9: Access to Leppington Stabling Yard



Image 10: Access gate N06 53.257 D to rail corridor via Leppington Stabling Yard carpark

LEPPINGTON STABLING YARD OFFICE



Image 11: Leppington Stabling Yard office



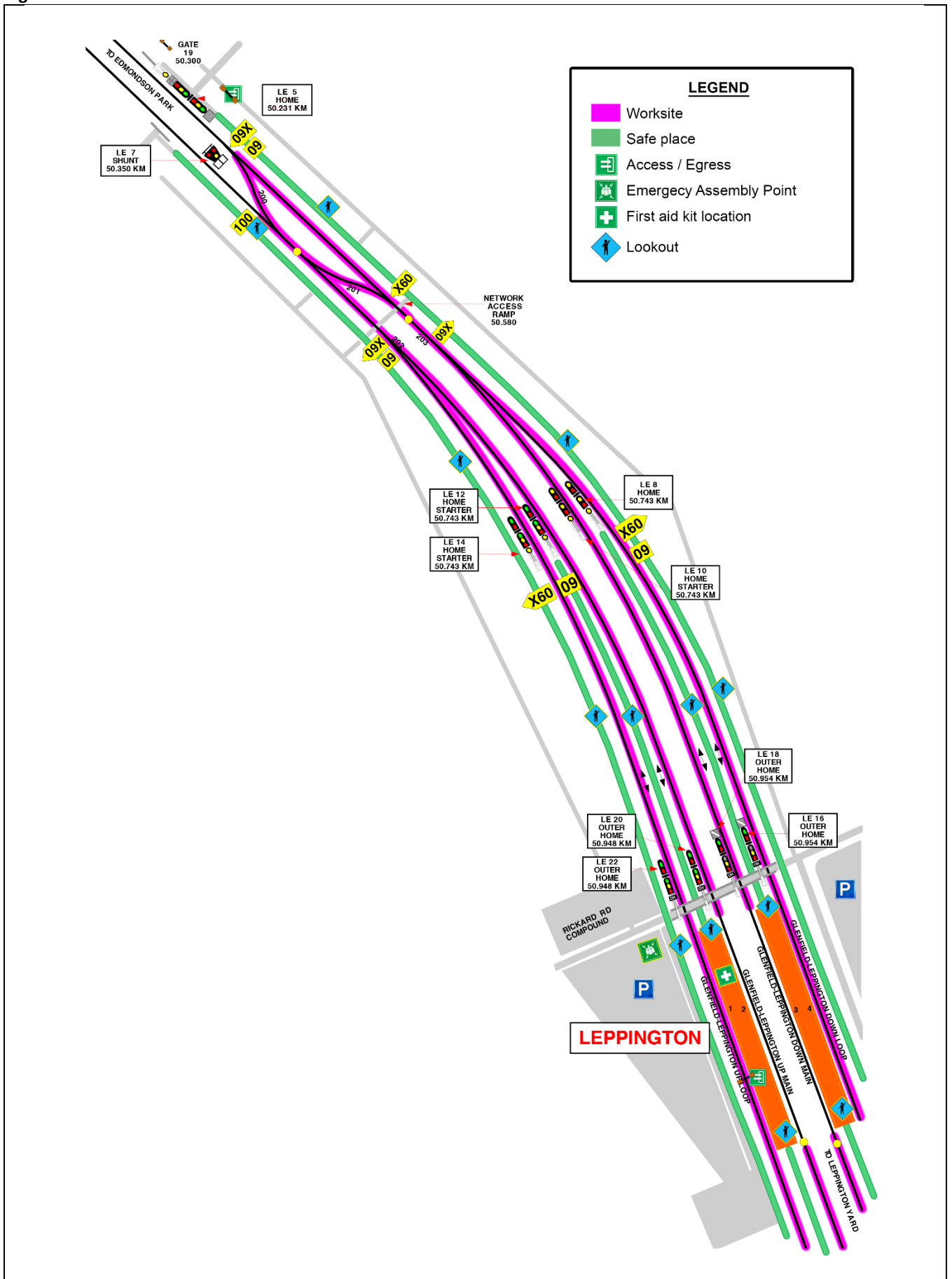
Image 12: Leppington Stabling Yard office

**Safe Work Instruction**

**Lookout Working Worksite Protection for Leppington to Leppington Stabling Yard routine network maintenance activities**



**Diagram – Section 1**

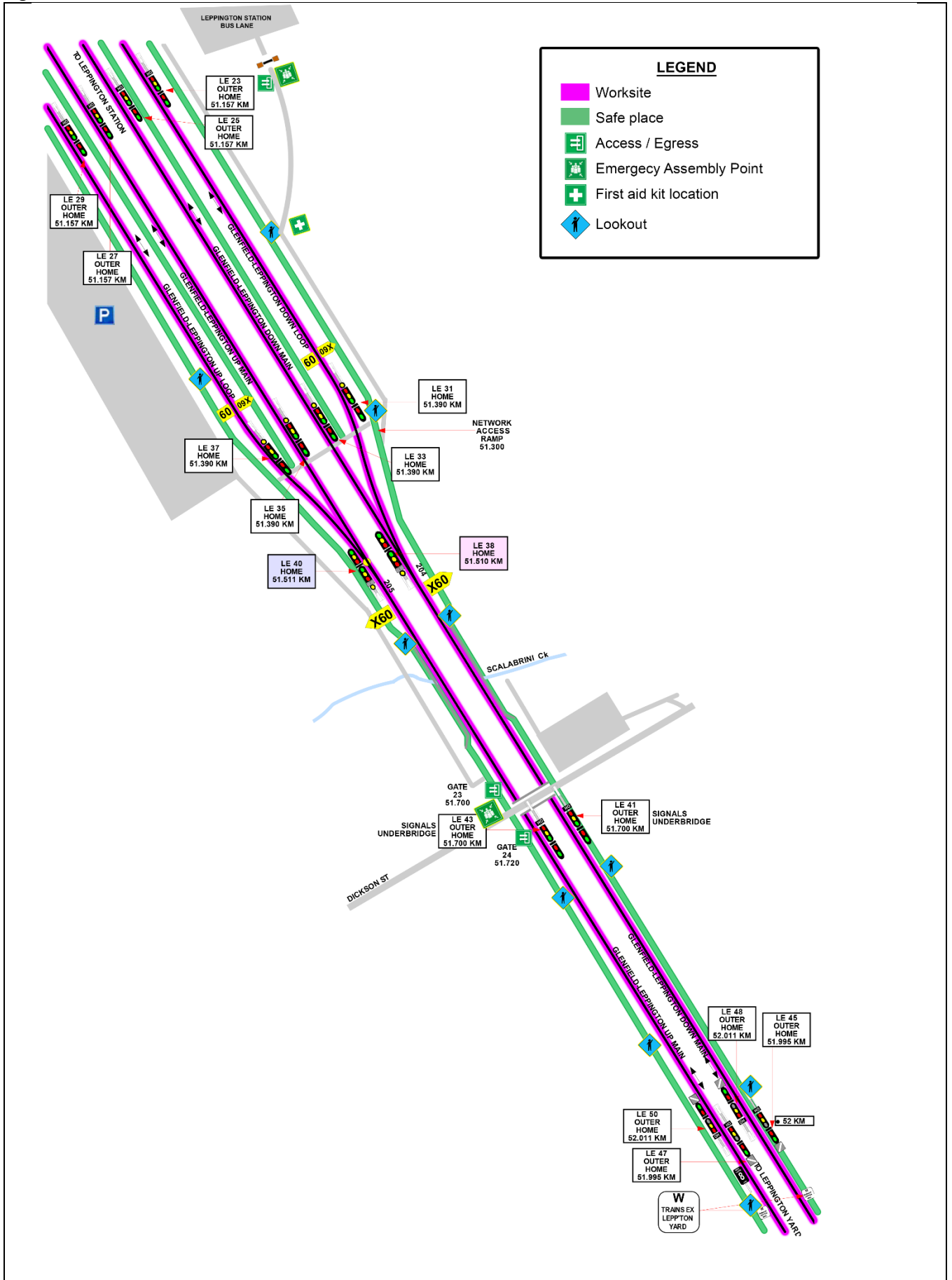


**Safe Work Instruction**

**Lookout Working Worksite Protection for Leppington to Leppington Stabling Yard routine network maintenance activities**



Diagram – Section 1 cont.



**LEGEND**

- Worksite
- Safe place
- + Access / Egress
- + Emergency Assembly Point
- + First aid kit location
- + Lookout

# Safe Work Instruction

## Lookout Working Worksite Protection for Leppington to Leppington Stabling Yard routine network maintenance activities



Diagram – Section 2

